

bin collection



JULY 2023

M	T	W	T	F	S	S
					1	2
3	4	5	6	7	8	9
10	11	12	13	14	15	16
17	18	19	20	21	22	23
24	25	26	27	28	29	30
31						

AUGUST 2023

M	T	W	T	F	S	S
	1	2	3	4	5	6
7	8	9	10	11	12	13
14	15	16	17	18	19	20
21	22	23	24	25	26	27
28	29	30	31			

SEPTEMBER 2023

M	T	W	T	F	S	S
				1	2	3
4	5	6	7	8	9	10
11	12	13	14	15	16	17
18	19	20	21	22	23	24
25	26	27	28	29	30	

OCTOBER 2023

M	T	W	T	F	S	S
						1
2	3	4	5	6	7	8
9	10	11	12	13	14	15
16	17	18	19	20	21	22
23	24	25	26	27	28	29
30	31					

NOVEMBER 2023

M	T	W	T	F	S	S
		1	2	3	4	5
6	7	8	9	10	11	12
13	14	15	16	17	18	19
20	21	22	23	24	25	26
27	28	29	30			

DECEMBER 2023

M	T	W	T	F	S	S
				1	2	3
4	5	6	7	8	9	10
11	12	13	14	15	16	17
18	19	20	21	22	23	24
25	26	27	28	29	30	31

JANUARY 2024

M	T	W	T	F	S	S
1	2	3	4	5	6	7
8	9	10	11	12	13	14
15	16	17	18	19	20	21
22	23	24	25	26	27	28
29	30	31				

FEBRUARY 2024

M	T	W	T	F	S	S
			1	2	3	4
5	6	7	8	9	10	11
12	13	14	15	16	17	18
19	20	21	22	23	24	25
26	27	28	29			

MARCH 2024

M	T	W	T	F	S	S
				1	2	3
4	5	6	7	8	9	10
11	12	13	14	15	16	17
18	19	20	21	22	23	24
25	26	27	28	29	30	31

APRIL 2024

M	T	W	T	F	S	S
1	2	3	4	5	6	7
8	9	10	11	12	13	14
15	16	17	18	19	20	21
22	23	24	25	26	27	28
29	30					

MAY 2024

M	T	W	T	F	S	S
		1	2	3	4	5
6	7	8	9	10	11	12
13	14	15	16	17	18	19
20	21	22	23	24	25	26
27	28	29	30	31		

JUNE 2024

M	T	W	T	F	S	S
					1	2
3	4	5	6	7	8	9
10	11	12	13	14	15	16
17	18	19	20	21	22	23
24	25	26	27	28	29	30

what goes in each bin?



Compost your food scraps, nurture your garden and cut your waste in half.
For home composting tips visit ballina.nsw.gov.au/community-programs

home compost

Fruit and vegetable scraps

Eggshells

Grass clippings

Tea bags and coffee grounds

Leaves and flowers

Shredded paper

Paper towels and tissues

Food stained cardboard eg: pizza boxes

Australian certified compostable bags



Continue to use your bin with the dark green lid.
All new and replacement landfill waste bins will now have **red lids**.

landfill

Disposable nappies

Personal hygiene and medical waste (no sharps)

Pet droppings in a plastic bag

Scrap metal appliances*

Rope, string and electrical cable

Other items that cannot be recycled, reused or composted

Food stained cardboard eg: pizza, hot chip boxes (if not composted)



NO PLASTIC BAGS OR COFFEE CUPS!

Continue to use your blue base bin with **yellow lid** as usual. All new and replacement bin bases will now be dark green.

recycling

Glass bottles and jars

Plastic bottles and tubs

Paper including newspaper, envelopes and magazines

Clean cardboard including boxes and egg cartons

Steel cans

Aluminium cans, clean foil and trays

Aerosol cans (empty)

Milk and juice cartons

Tetrapaks

bins should:

- Be presented **before 5am** or on the night before collection day as collection times can vary.
- Be a **maximum of 1m from the edge of the road seal** with front to the road and 1m apart.
- **Not be overfilled** – lids must close fully.
- **Not be obstructed** by any vehicles, trees or other objects.
- Bins must be **removed from kerbside** on the same day of service.
- Bins **heavier than 60kg** may not be lifted.

*Scrap metal recycling accepted free of charge at the resource recovery centre.

contact information

For waste, resource recovery or bin enquiries:

Resource Recovery Centre
167 Southern Cross Drive, Ballina
Phone 02 6686 1287

Salvage Shed tip shop:
Phone 0429 934 557

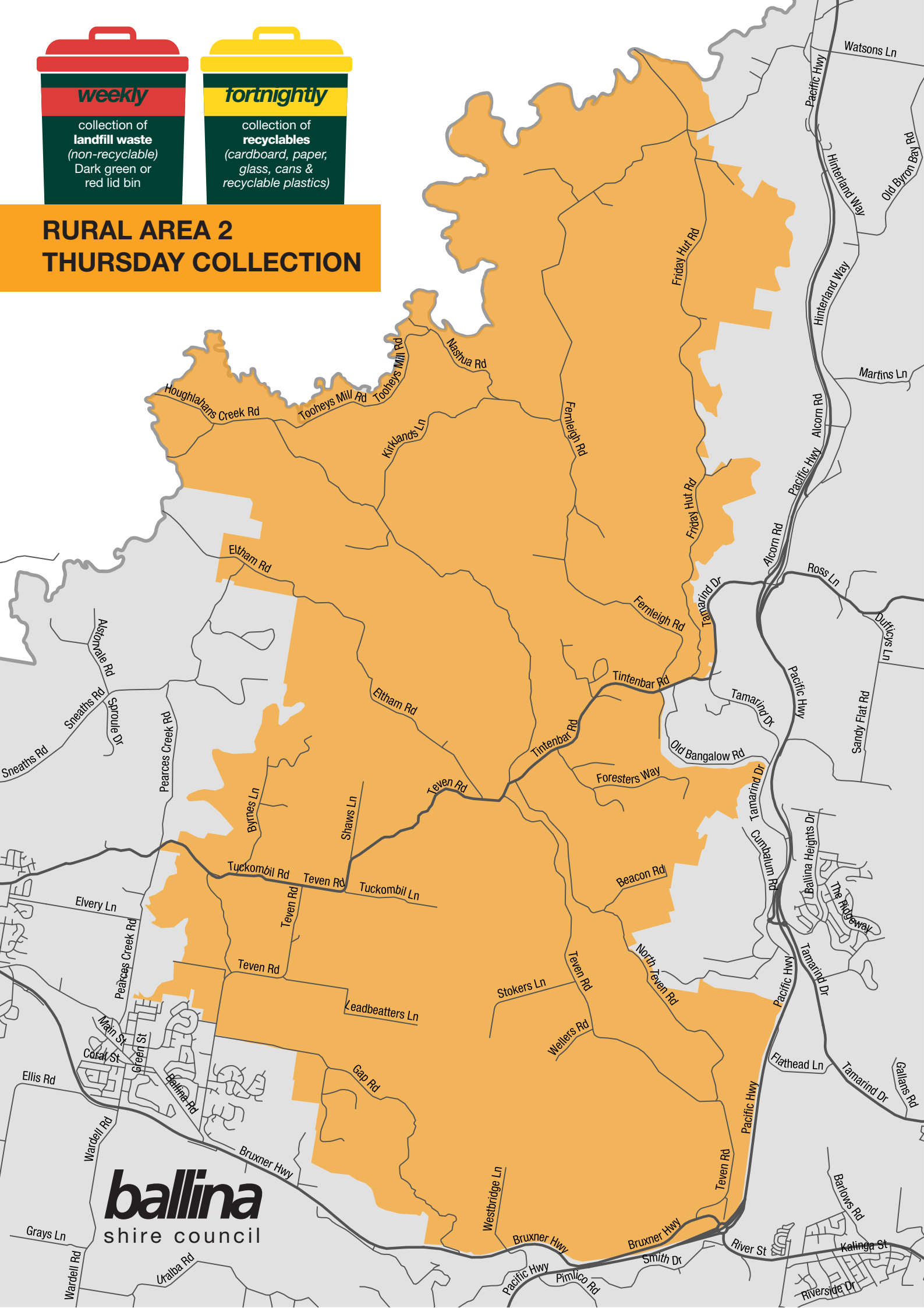
ballina.nsw.gov.au



ballina shire council



ballina
shire council





fortnightly

collection of
recyclables
(cardboard, paper,
glass, cans &
recyclable plastics)

RURAL AREA 2 FRIDAY COLLECTION