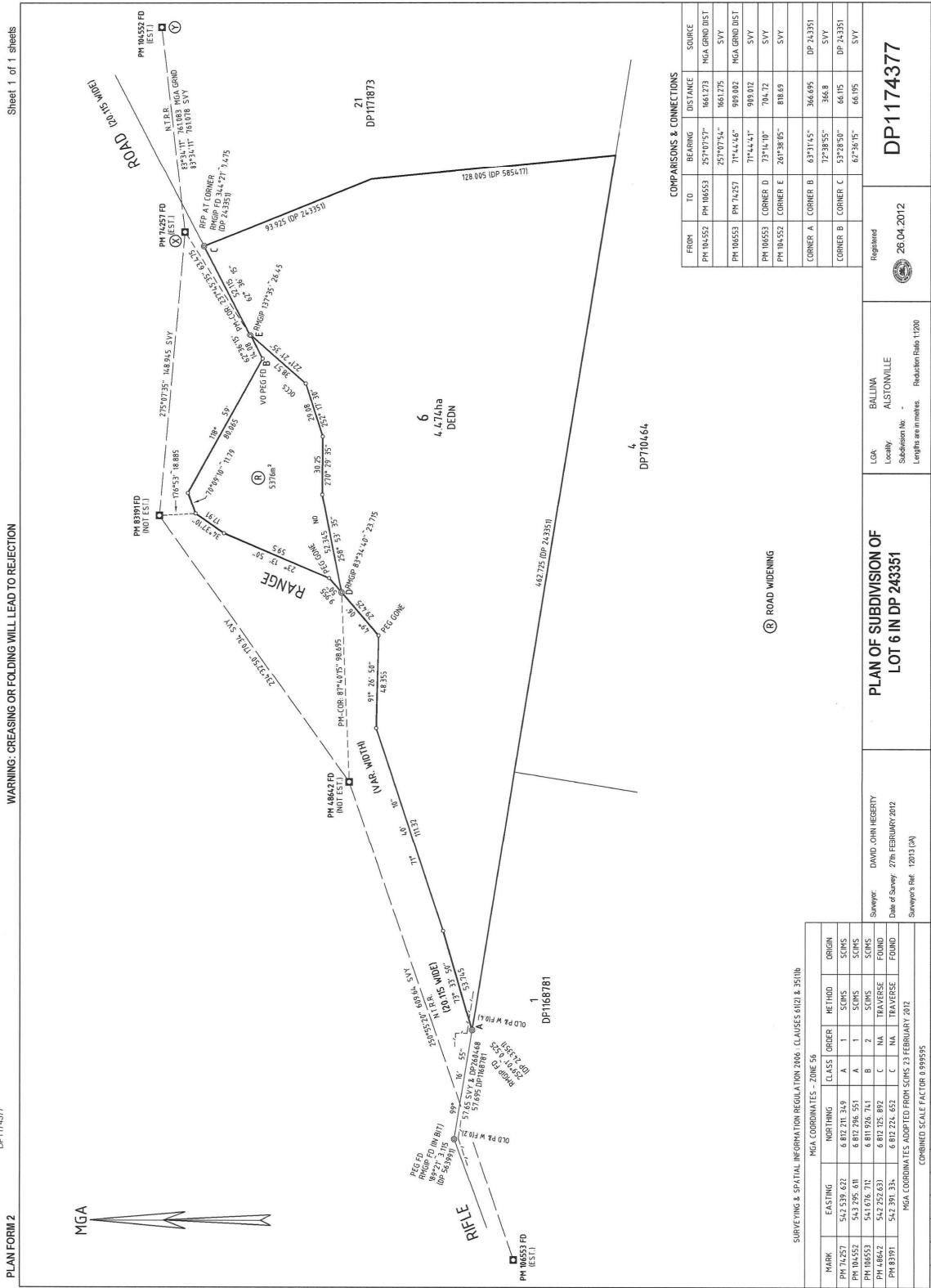


11.6 Road Closing Proposal - Rifle Range Road Wollongbar.DOC



DP1174377

WARNING: CREASING OR FOLDING WILL LEAD TO REJECTION

Sheet 1 of 1 sheets

PLAN FORM 2



COMPARISONS & CONNECTIONS

FROM	TO	BEARING	DISTANCE	SOURCE
PM 104552	PM 106553	257°07'57"	1641.273	MGA GRND DIST
PM 106553	PM 74257	257°07'54"	1641.275	SVY
PM 106553	CORNER D	71°44'46"	909.002	MGA GRND DIST
PM 106553	CORNER D	71°44'44"	908.002	SVY
PM 104552	CORNER E	73°14'10"	704.72	SVY
PM 104552	CORNER E	207°28'05"	818.89	SVY
CORNER A	CORNER B	63°31'45"	366.695	DP 243351
CORNER B	CORNER C	12°38'55"	366.8	SVY
CORNER C	CORNER A	53°28'50"	66.195	DP 243351
CORNER B	CORNER A	62°16'05"	66.195	SVY

Registered  
 26.04.2012

LOA: BALLINA ALSTONVILLE  
 Locality: ALSTONVILLE  
 Substation No.:  
 Lengths are in metres. Reduction Ratio: 1:1200

PLAN OF SUBDIVISION OF  
 LOT 6 IN DP 243351

Surveyor: DAVID JOHN HEBERTY  
 Date of Survey: 27th FEBRUARY 2012  
 Surveyor's Ref.: 12013 (LA)

COMBINED SCALE FACTOR 0.99995

MARK	EASTING	NORTHING	CLASS	METHOD	ORIGIN
PM 42527	542 538.632	6 812 216.318	A	1 - SCMS	SCMS
PM 104552	542 295.601	6 812 295.551	A	1 - SCMS	SCMS
PM 106553	542 676.712	6 811 926.741	B	2 - SCMS	SCMS
PM 48642	542 252.631	6 812 125.892	C	NA TRAVERSE	FOUND
PM 83191	542 391.334	6 812 224.652	C	NA TRAVERSE	FOUND

MARKING CLASS ORDER METHOD ORIGIN  
 MGA COORDINATES - ZONE 56  
 SURVEYING & SPATIAL INFORMATION REGULATION 2006 - CLAUSES 61(B) & 35(1)(b)

Box: e-Box /Doc:DP 1174377 P /Rev:26-Apr-2012 /Sts:SC.OK /Prt:27-Apr-2012 01:34 /Pgs:ALL /Seg:1 of 3  
 WARNING : Electronic Document Supplied by LPI NSW for Your Internal Use Only.