



LAKE AINSWORTH CAR PARK EXTENSION PACIFIC PARADE, LENNOX HEAD

DRAWING No: LHR 30.057

JULY 2015

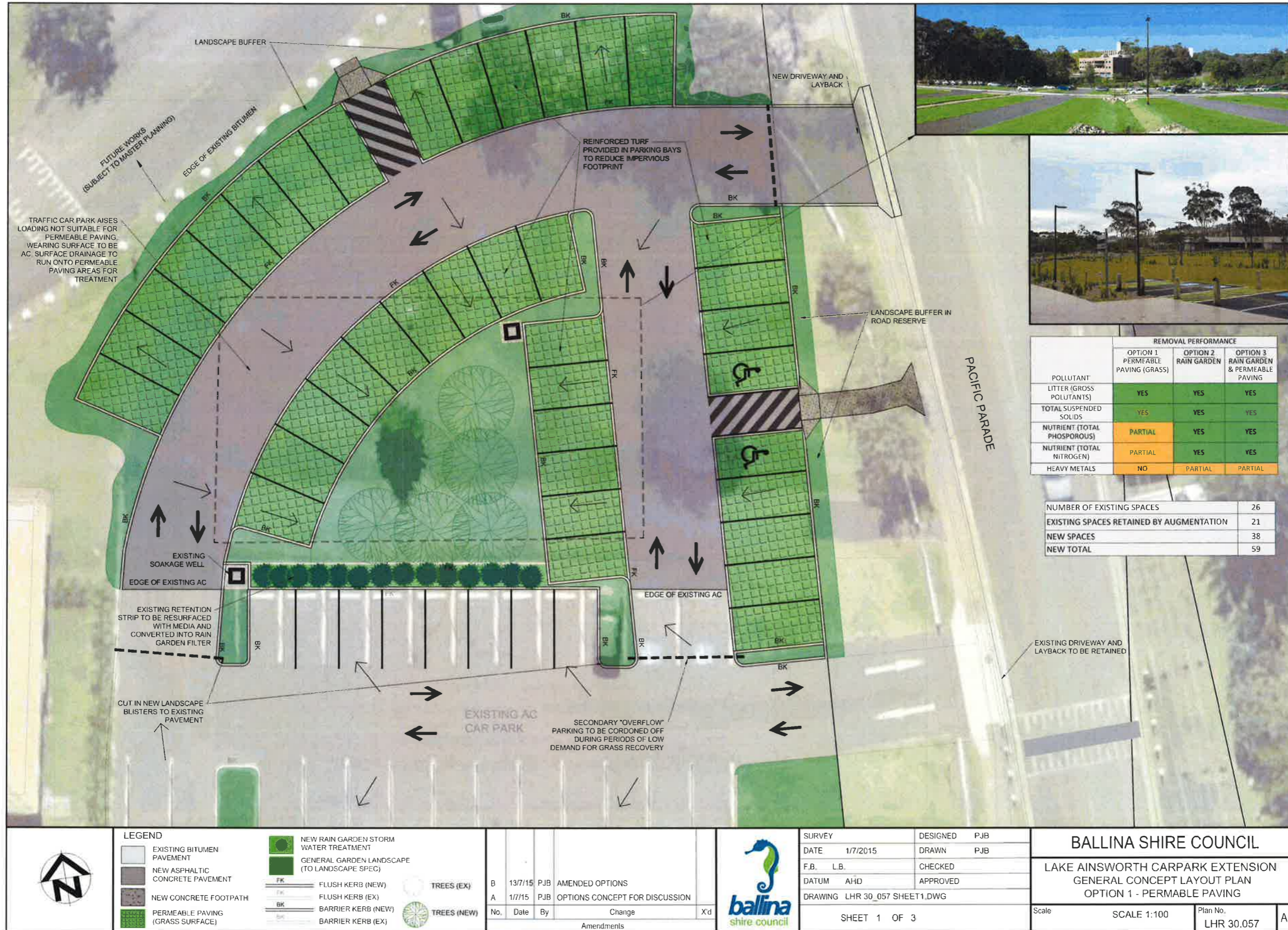
OPTIONS CONCEPT DRAWINGS

LOCALITY PLAN



DRAWING REGISTER

SHEET	ISSUE	DATE	TITLE
1 OF 3	B	13/7/2015	CONCEPT LAYOUT PLAN - OPTION 1 PERMEABLE PAVING
2 OF 3	B	13/7/2015	CONCEPT LAYOUT PLAN - OPTION 2 RAIN GARDEN FILTRATION
3 OF 3	B	13/7/2015	CONCEPT LAYOUT PLAN - OPTION 3 RAIN GARDEN AND PERMEABLE PAVING





POLLUTANT	REMOVAL PERFORMANCE		
	OPTION 1 PERMEABLE PAVING (GRASS)	OPTION 2 RAIN GARDEN	OPTION 3 RAIN GARDEN & PERMEABLE PAVING
LITTER (GROSS POLLUTANTS)	YES	YES	YES
TOTAL SUSPENDED SOLIDS	YES	YES	YES
NUTRIENT (TOTAL PHOSPHOROUS)	PARTIAL	YES	YES
NUTRIENT (TOTAL NITROGEN)	PARTIAL	YES	YES
HEAVY METALS	NO	PARTIAL	PARTIAL



NUMBER OF EXISTING SPACES	26
EXISTING SPACES RETAINED BY AUGMENTATION	21
NEW SPACES	38
NEW TOTAL	59

LEGEND

- EXISTING BITUMEN PAVEMENT
- NEW ASPHALTIC CONCRETE PAVEMENT
- NEW CONCRETE FOOTPATH
- PERMEABLE PAVING (GRASS SURFACE)
- NEW RAIN GARDEN STORM WATER TREATMENT
- GENERAL GARDEN LANDSCAPE (TO LANDSCAPE SPEC)
- FLUSH KERB (NEW)
- FLUSH KERB (EX)
- BARRIER KERB (NEW)
- BARRIER KERB (EX)
- TREES (EX)
- TREES (NEW)

No.	Date	By	Change	X'd
B	13/7/15	PJB	AMENDED OPTIONS	
A	1/7/15	PJB	OPTIONS CONCEPT FOR DISCUSSION	

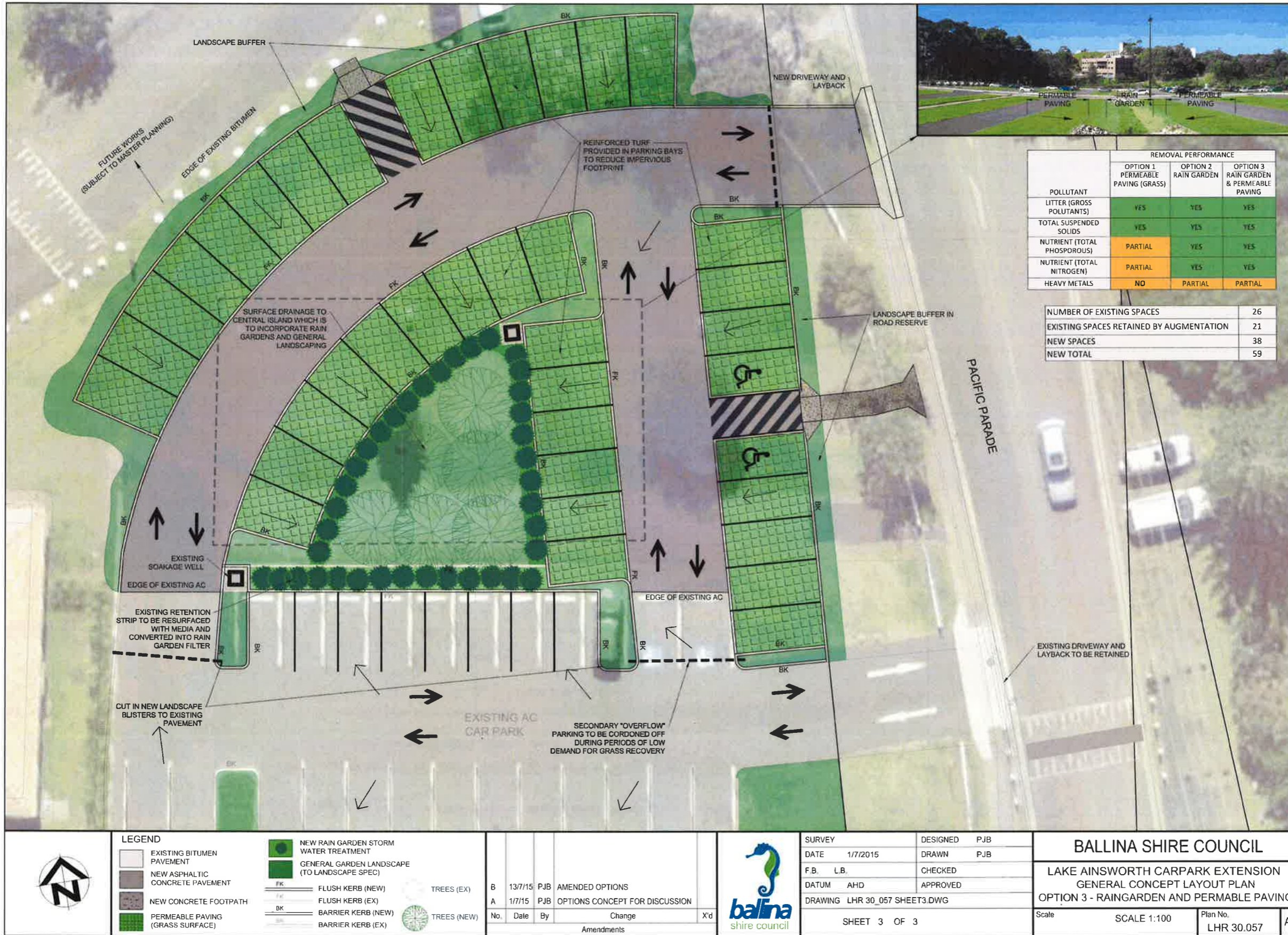
ballina shire council

SURVEY DATE 1/7/2015
 DESIGNED PJB
 DRAWN PJB
 F.B. L.B. CHECKED
 APPROVED
 DATUM AHD
 DRAWING LHR 30_057 SHEET2.DWG
 SHEET 2 OF 3

BALLINA SHIRE COUNCIL

LAKE AINSWORTH CARPARK EXTENSION
 GENERAL CONCEPT LAYOUT PLAN
 OPTION 2 - RAINGARDEN

Scale: SCALE 1:100
 Plan No. LHR 30.057
 A1



C	28/03/09	General Management for Council	AG	Chair
B	24/04/09	General Management for Council	AG	Chair
A	15/12/08	Issue for final approval	AG	Chair

Ballina Shire Council

Lake Ainsworth Caravan Park
& Crown Reserve
Redevelopment

Plan & Long Section
Camp Drew Road
Ch 00 to 400

ARDILL PAYNE & PARTNERS
CONSULTING CIVIL AND STRUCTURAL ENGINEERS
PROJECT MANAGERS TOWN PLANNERS AND BUILDERS

27 West Street
Ballina NSW 2461
Ph: 6621 1234
Fax: 6621 1234
www.ardillpayne.com.au

6707 09 C

