



Notice of Local Traffic Committee Meeting

a Local Traffic Committee Meeting will be held in the Ballina Shire Tucker Room, 40 Cherry Street, Ballina on **Wednesday 9 August 2017 commencing at 10.00am.**

Business

1. Attendance & Apologies
2. Minutes of Previous Meeting
3. Deputations by Members of Public or Councillors
4. Summary Report – Recent Decisions of Council in Response to LTC Recommendations
5. Items to be Referred to Council
6. Items to be Referred to the General Manager's Delegate
7. Items for Traffic Engineering Advice
8. Information of the Committee
9. Regulatory Matters on Classified Roads (GM's Delegate)
10. Items Without Notice
11. Next Meeting

A handwritten signature in black ink that reads 'John Truman'.

John Truman
Group Manager
Civil Services

Table of Contents

1.	Attendance & Apologies	3
2.	Minutes of Previous Meeting.....	3
3.	Deputations by Members of Public or Councillors.....	3
4.	Summary Report - Recent Decisions of Council in Response to LTC Recommendations.....	3
5.	Items to be Referred to Council	3
6.	Items Referred to General Manager's Delegate	4
6.1	NO STOPPING Zone - Boatharbour Road, West Ballina	4
6.2	Proposed LOADING ZONE - 12 Shelly Beach Road, East Ballina	5
6.3	Centenary of Paddy Bugden VC Street March - Alstonville 16 September 2017	8
7.	Items for Traffic Engineering Advice	10
7.1	Request for Traffic Management Changes in the Vicinity of Wollongbar Public School - Simpson Avenue, Wollongbar	10
7.2	Request Change to One Hour Parking Limit - Moon Street, Ballina	14
7.3	McDonalds Exit - Bangalow Road, Ballina	17
8.	Information for the Committee	19
8.1	Ballina Shire Bike Plan	19
8.2	Pedestrian Access and Mobility Plan Update	20
8.3	Schedule of Outstanding Resolutions of the Committee	21
9.	Regulatory Matters on Classified Roads (GM's Delegate)	27
10.	Items Without Notice.....	27
11.	Next Meeting	27

5. Items to be Referred to Council

1. Attendance & Apologies

2. Minutes of Previous Meeting

A copy of the Minutes of the Local Traffic Committee Meeting held on Wednesday 14 June 2017 were distributed with the business paper.

RECOMMENDATION

That Council confirms the Minutes of the Local Traffic Committee Meeting held on Wednesday 14 June 2017.

3. Deputations by Members of Public or Councillors

Nil Items

4. Summary Report - Recent Decisions of Council in Response to LTC Recommendations

Nil Items

5. Items to be Referred to Council

Nil Items

6.1 NO STOPPING Zone - Boatharbour Road, West Ballina

6. Items Referred to General Manager's Delegate

6.1 NO STOPPING Zone - Boatharbour Road, West Ballina

Introduction

The resident of No 1 Boatharbour Road is unable to access the southbound bus due to the presence of a NO STOPPING Zone.

Information

The eastern side of Boatharbour Road has a NO STOPPING Zone for a considerable distance to support an associated on road cycleway. The NO STOPPING Zone opposite No 1 Boatharbour Road is preventing the resident from accessing the local bus as it is unable to legally stop in this location.

The NO STOPPING zone could be replaced in this location by a NO PARKING Zone that would enable busses to legally stop and pick up/let down passengers, whilst still prohibiting any longer term parking in the cycleway.

RECOMMENDATION

A NO PARKING zone be provided in Boatharbour Road West Ballina, opposite No 1 Boatharbour Road of sufficient length to accommodate a local bus, to replace part of the existing NO STOPPING ZONE.

Attachment(s)

Nil

6.2 Proposed LOADING ZONE - 12 Shelly Beach Road, East Ballina

6.2 Proposed LOADING ZONE - 12 Shelly Beach Road, East Ballina

Introduction

The operator of the Belle General Cafe at Shelly Beach has requested provision of a LOADING ZONE outside their premises.

Information

The Belle General Cafe is a commercial activity located in a mostly residential area. The issue of customers occupying parking spaces in the streets outside nearby residences has caused some ongoing concern with neighbours.

The engineering assessment for the latest Cafe development, DA 2015/17, advised:

Provisions for Service and Delivery Vehicles

There isn't provision for service vehicles to enter the site. Delivery vehicles stop in front of the existing café on Shelley Beach road to unload. The existing arrangement will continue.

An earlier approval for the strata subdivision of the building containing the Belle General, DA 2014/553 contained the following consent condition:

38. Vehicles servicing the commercial premise (including deliveries and waste collection) shall not park or wait in the loading docks or surrounding residential areas prior to 7.00am or after 6.00pm Monday to Fridays and prior to 8.00am or after 1.00pm Saturdays.

The operator of the Belle General has requested the provision of a LOADING ZONE outside the premises. She advises that this application has been made in response to requests from neighbours who are concerned with the current practices of delivery vehicles to double park or otherwise park unlawfully when delivering to the Belle General.

The operator of the Belle General further advises that currently deliveries include:

- Fruit and vegetable daily
- Bread daily
- Meat daily
- Fish daily
- Milk every second day
- Farmers market twice weekly
- Coffee twice weekly
- Gas

A time of 7am to 3pm is requested for a Loading Zone of 15.5 m length (three car spaces).

RECOMMENDATION

The Committee considers the merits of providing a time limited LOADING ZONE in Shelly Beach Road adjacent to the Belle General Cafe at 12 Shelly Beach Road, East Ballina.

Attachment(s)

1. Belle General Delivery



6.3 Centenary of Paddy Bugden VC Street March - Alstonville 16 September 2017

6.3 Centenary of Paddy Bugden VC Street March - Alstonville 16 September 2017

Introduction

Alstonville RSL Sub-Branch request street closures identical to that used on ANZAC Day for a street march on Saturday 16 September 2017 to commemorate the Centenary of Paddy Bugden VC.

Information

Alstonville RSL Sub-Branch request street closures identical to that used on ANZAC Day for a street march on Saturday 16 September 2017 to commemorate the Centenary of Paddy Bugden VC. The street closures will be between 10 am and 12 noon.

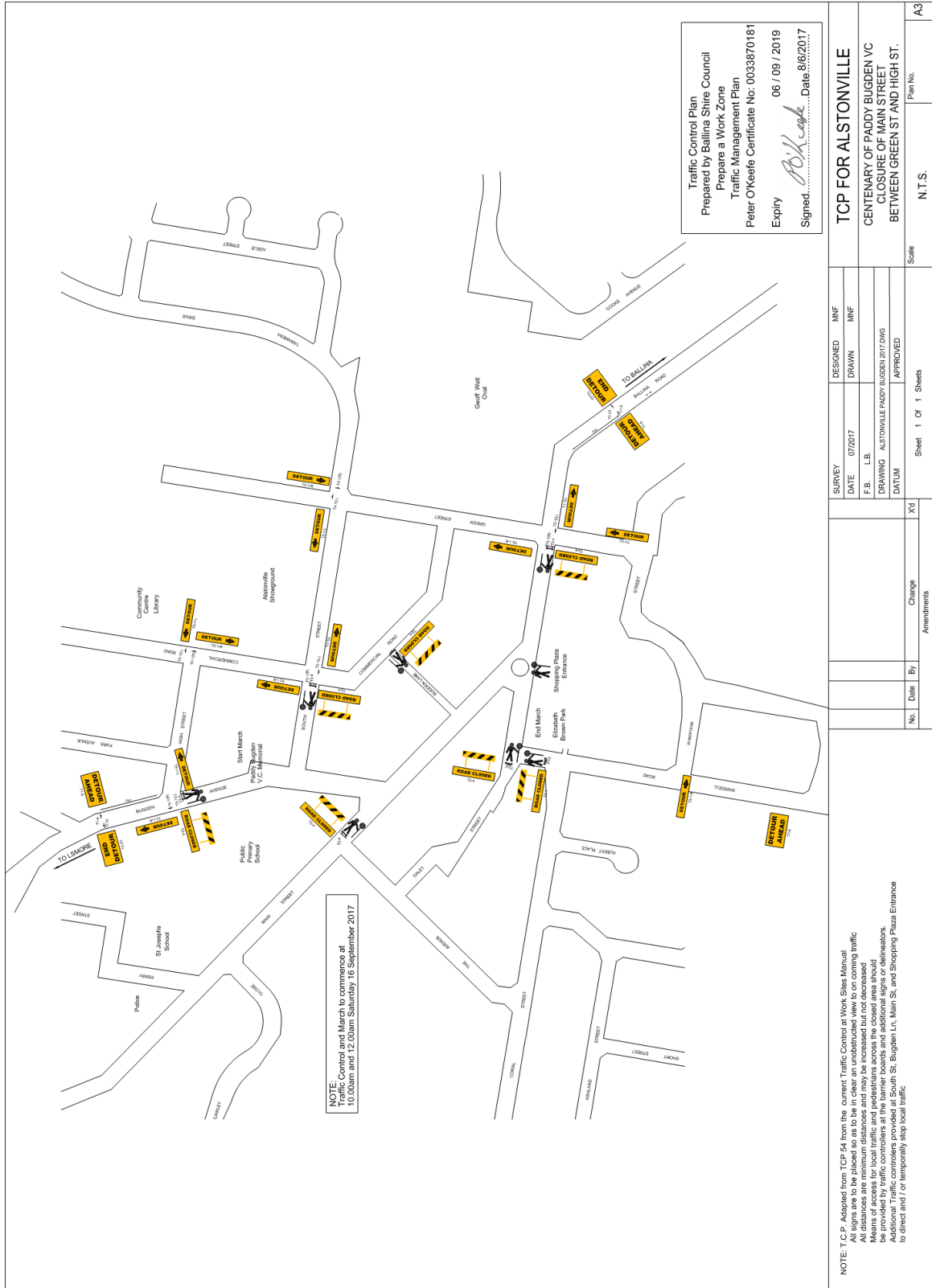
RECOMMENDATION

The Committee support closure of Bugden Avenue and Main Street Alstonville between 10 am and 12 noon Saturday 16 September 2017 in accordance with the attached Traffic Control Plan for the Centenary of Paddy Bugden VC commemorative march.

Attachment(s)

1. Paddy Bugden VC TCP

6.3 Centenary of Paddy Bugden VC Street March - Alstonville 16 September 2017



7.1 Request for Traffic Management Changes in the Vicinity of Wollongbar Public School - Simpson Avenue, Wollongbar

7. Items for Traffic Engineering Advice

7.1 Request for Traffic Management Changes in the Vicinity of Wollongbar Public School - Simpson Avenue, Wollongbar

Introduction

Wollongbar P & C have requested changes to traffic management near the Wollongbar Public School in Simpson Avenue, Wollongbar.

Information

The Wollongbar P & C Committee requests the Traffic Committee investigate the following recommendations:

- "1. Install a pedestrian activated light crossing on Simpson Avenue where there is currently an existing children's crossing.*
- 2. Extend the school zone to the west side of Hall Court so that it is visible to cars prior to the curve in Simpson Avenue OR Build speed bumps to Simpson Avenue prior to the curve (on either side of Hall Court) to ensure traffic is approaching the school zone at a safe speed. Either of these changes would increase the safety for both the Public School and the local Preschool community. Both measures would be welcome.*
- 3. Support Wollongbar Public School's recommendation to Roads and Maritime Services that we be reconsidered for a crossing supervisor position (as submitted by Wollongbar Public School's Principal Jennifer Thomas in 2016).*
- 4. Encourage local police patrols to add Simpson Avenue as a regular location for a mobile speed camera."*

RECOMMENDATION

The Committee consider the Wollongbar P & C request.

Attachment(s)

1. Wollongbar P & C Letter

Wollongbar P&C

26 July, 2017

Ballina Shire Council

ATTN Local Traffic Committee,

This letter is to draw to the attention of the Local Traffic Committee the daily dangers faced by school children, parents, carers, and teachers at Wollongbar Public School.

Ballina Shire Council continues to push forward with increased growth for Wollongbar community¹, as evidenced by the 18% growth seen between the 2011 and 2016 census figures², which already exceeded the estimated population growth predicted by Ballina Shire Council³. Unfortunately, one area of planning that hasn't been adequately considered is the safety of pedestrians at the local school. Although we applaud the work done with the Pedestrian Access and Mobility Plan, including the expansion of footpaths on Simpson Avenue between the Shopping Precinct and the School, there is no safe way for pedestrians to cross from this upgraded footpath to the School grounds.

Wollongbar Public School does have an existing school crossing, however as the school is located on a curved road, the warning signs for the school zone and crossing are not clearly visible by traffic approaching from the west. We sincerely hope that it does not take an injury or **unthinkably**, a fatality to upgrade the traffic calming features around the school. Please refer to Appendix A to see the existing traffic features and our specific areas of concern.

¹ Ballina Shire Council 2008, 'Wollongbar Urban Expansion Area Infrastructure Strategy 2008,' <https://www.ballina.nsw.gov.au/page.asp?f=RES-JVQ-72-65-47>

² Census 2011 recorded 2396 Wollongbar residents (Australian Bureau of Statistics 2011, 'State Suburb, Wollongbar' (http://www.censusdata.abs.gov.au/census_services/getproduct/census/2011/quickstat/SSC12533?opendocument)).

Census 2016 recorded 2828 Wollongbar residents (Australian Bureau of Statistics 2011, 'State Suburb, Wollongbar' (http://www.censusdata.abs.gov.au/census_services/getproduct/census/2016/quickstat/SSC14357?opendocument)).

³ Ballina Councils estimate for 2017 was 2700 residents, this has already been exceeded in the 2016 census. (Ballina Shire Council 2017, 'Wollongbar 2038: strategic planning project,' <https://www.ballina.nsw.gov.au/page.asp?f=RES-RVU-15-00-71>)

7.1 Request for Traffic Management Changes in the Vicinity of Wollongbar Public School - Simpson Avenue, Wollongbar

As representatives from the Wollongbar P&C Committee and the wider local community who are deeply concerned about the inadequacy of traffic safety measures around the Wollongbar School, we urgently request that the Local Traffic Committee investigate this matter further to determine a timetable to implement the following recommendations:

1. Install a pedestrian activated light crossing on Simpson Avenue where there is currently an existing children's crossing.
2. Extend the school zone to the west side of Hall Court so that it is visible to cars prior to the curve in Simpson Avenue OR Build speed bumps to Simpson Avenue prior to the curve (on either side of Hall Court) to ensure traffic is approaching the school zone at a safe speed. Either of these changes would increase the safety for both the Public School and the local Preschool community. Both measures would be welcome.
3. Support Wollongbar Public School's recommendation to Roads and Maritime Services that we be reconsidered for a crossing supervisor position (as submitted by Wollongbar Public School's Principal Jennifer Thomas in 2016).
4. Encourage local police patrols to add Simpson Avenue as a regular location for a mobile speed camera.

We look forward to your prompt response and we would be happy to send representatives to present these concerns and recommendations to the Local Traffic Committee's meeting on 9 August, 2017.

Yours sincerely,

Anna Kubelka, President

P&C Committee, Wollongbar Public School
Mobile: 0410.594.676
Email: wollongbarpc@hotmail.com

cc.

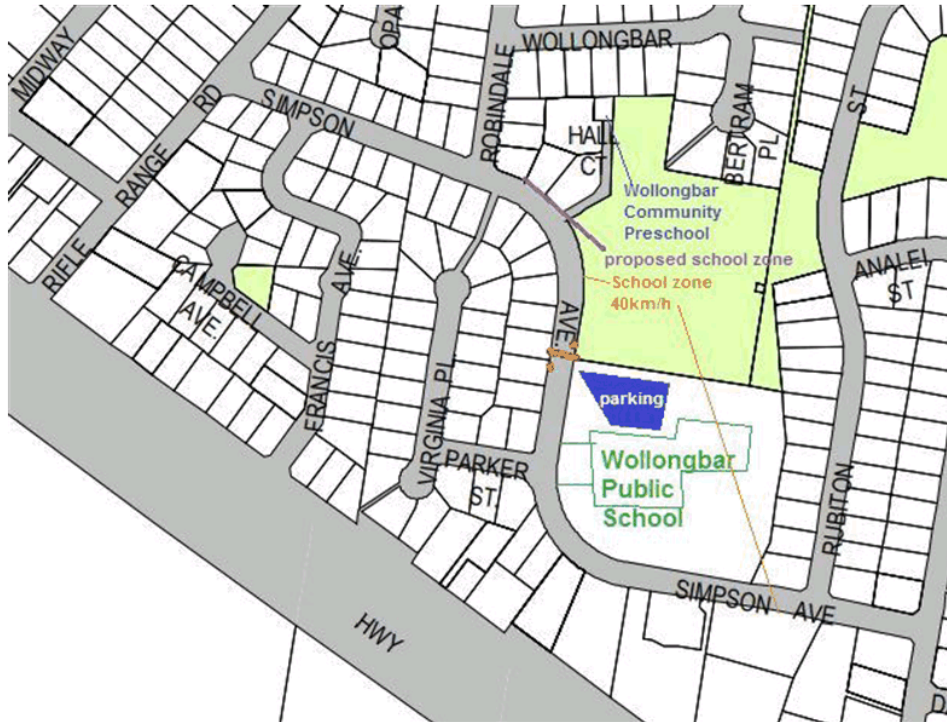
Jennifer Thomas, Principal, Wollongbar Public School
Melissa Underwood, Director, Wollongbar Community Preschool
Cr David Wright, Mayor, Ballina Shire Council
Crs Sharon Parry, Ben Smith and Eoin Johnston, "C" Ward, Ballina Shire Council
MP Kevin Hogan
MP Tamara Smith

Wollongbar P&C

APPENDIX A

Wollongbar Public School Crossing Layout

School zone signage is not visible when approaching from Rifle Range Rd until after the curve in the road. Recommendation 2 is that the School zone is extended to between Robindale Dr and Hall Ct OR that speed bumps are installed on either side of Hall Ct.



7.2 Request Change to One Hour Parking Limit - Moon Street, Ballina

7.2 Request Change to One Hour Parking Limit - Moon Street, Ballina

Introduction

A business operator has requested the One Hour parking zone in Moon Street, Ballina between River and Fawcett Street to be changed to a Two Hour parking zone.

Information

The operator of the Gym on the corner of Moon and Fawcett Streets, Ballina has advised Council's Ranger Section by email:

"I just wanted to bring to your attention a major problem we are facing here in Moon Street. When the street was done up I lost 10 car spaces from out the front of the gym with the new Roundabout and garden beds. The parking is only 1 hr now out the front of the Gym, Medispa, etc. (Moon Street). To do a decent workout my Members need more than an hr, it's more like 1 hour and 15 minutes to 30 minutes. My members are now mostly taking up parking spaces in River Street where possible and the Retail Shops are Then upset knowing they are not potential customers and taking the car space. My members have even been told They can't park there by Retail Owners. If they can't find a park in River Street they park out the front and have to be constantly watching or even go down and move their car in the middle of a workout to avoid a fine.

I have had members not renew because of the parking issues and fines. I just spoke to Patrick Knight who told me the parking is due to be revised in this calendar year, who do you suggest I send this to? Ballina Council Employees have just taken on Fitness Passport which I'm a member of, so a lot of them will be using the gym and experiencing first hand this issue.

I realise the inspector is just doing his job and has probably been on the end of some angry frustrated members, which I apologise.

It's really sad people are being penalised for trying to get fit. A lot of my members are pensioners and students who are already living On the bread line so a fine for \$108 is very hard to swallow."

The parking configuration in the section of Moon Street between River Street and Fawcett Street, prior to recent reconstruction works was 13 x 1H west side and 10 x 1H east side. Since the reconstruction works the configuration is 7 x 1H west side and 7 x 1H east side, plus motor cycle parking in a remnant triangle on the west side. There has been a loss of 9 car parking spaces.

There is 2H parking on both sides of Fawcett Street west of Moon Street and disabled then 2H parking on the south side of Fawcett Street east of Moon Street. River Street is mostly 1H east of Moon Street and 2H west of Moon Street. Moon Street north of River Street is a mix of 1H and 2H.

7.2 Request Change to One Hour Parking Limit - Moon Street, Ballina

The aim of the current configuration is to provide a mix of higher turnover 1H spaces and longer term 2H spaces to provide for a range of CBD customer needs. The 1H spaces are mostly in the core area between Cherry and Moon Streets with mostly 2H beyond these streets (with a considerable number of exceptions to accommodate 1/2H high turnover spaces, disabled, taxi and motorcycle spaces). The provision of 1H parking in the section of Moon Street between River Street and Fawcett Street is consistent with the general configuration of parking times within the CBD.

When observed on a number of occasions during business hours, the 1H spaces in Moon Street between River Street and Fawcett Street were mostly fully occupied, indicating significant demand for these relatively high turnover spaces. The nearby 2H spaces were also observed to be substantially occupied.

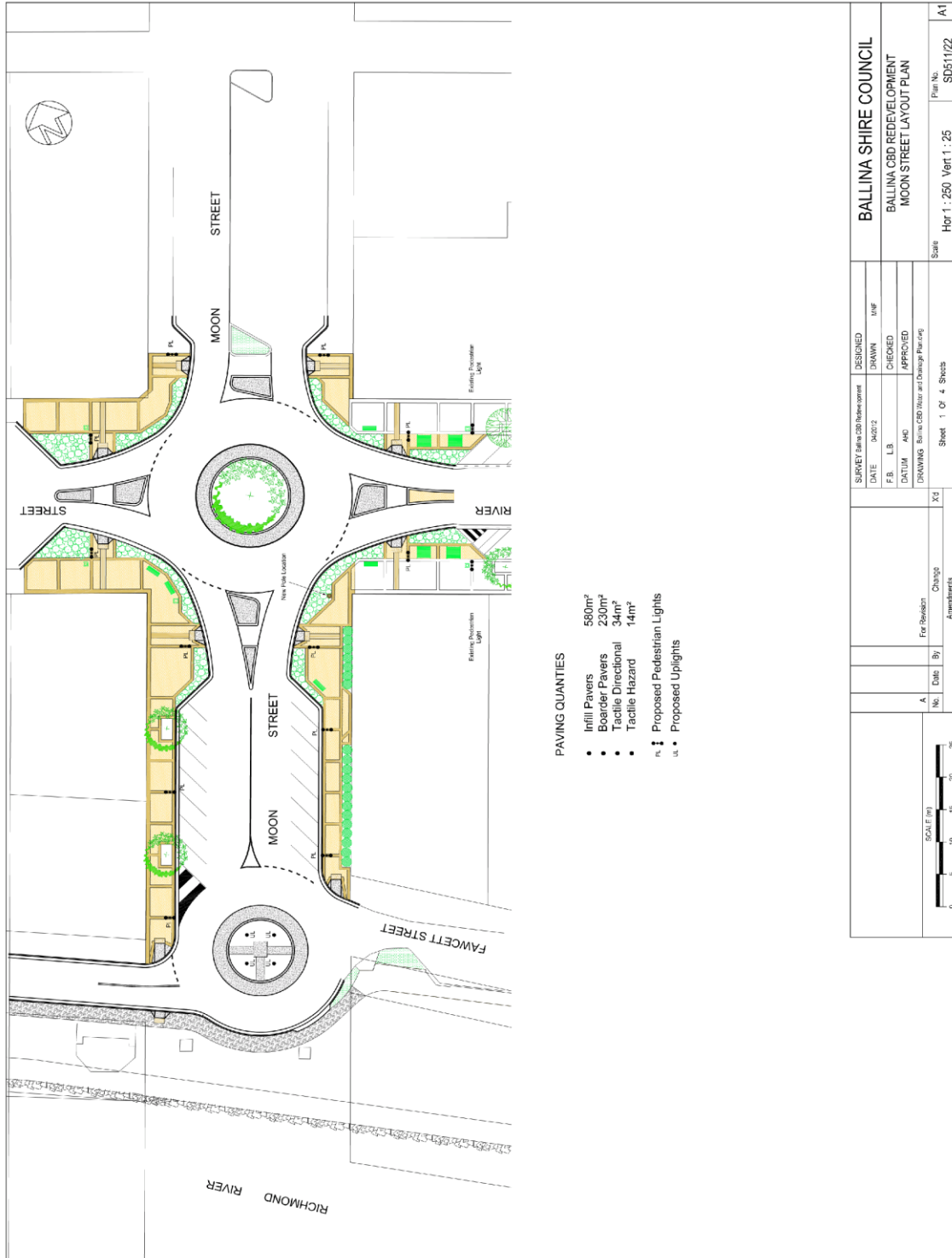
The last Ballina CBD Parking Study was done in 2004. An update was scheduled for 2015 but has been delayed due to resource constraints.

RECOMMENDATION

The Committee provide Traffic Engineering advice regarding parking arrangements in Moon Street, Ballina between River Street and Fawcett Street.

Attachment(s)

1. Moon Street Configuration



SURVEY Ballina CBD Redevelopment		DESIGNED	BALLINA SHIRE COUNCIL	
DATE	14/08/17	DRAWN	UJF	BALLINA CBD REDEVELOPMENT
F.B.	L.B.	CHECKED		MOON STREET LAYOUT PLAN
DATUM	AHD	APPROVED		
DRAWINGS Ballina CBD Major and Drainage Plan (0.0)		Scale		
No.		Date	By	Sheet 1 of 4 Sheets
A		For Revision		Scale
No.		Date	By	Hor 1 : 250 Vert 1 : 25
No.		Date	By	Sheet No. SD511/22
No.		Date	By	A1

7.3 McDonalds Exit - Bangalow Road, Ballina

7.3 McDonalds Exit - Bangalow Road, Ballina

Introduction

A resident has expressed concern about vehicles exiting from McDonalds conflicting with westbound left turning traffic in Bangalow Road approaching the Kerr Street traffic signals.

Information

A resident has advised:

"It would be appreciated if the Traffic authorities investigate the safety of the left hand turn lane leading to the traffic lights from Bangalow Road into Kerr St, which also forms part of the entrance and exit to McDonalds.

When indicating to move into that lane, it can also mean you are turning into McDonalds and traffic exiting McDonalds onto Bangalow Road do not often give way thinking the left hand indication means going into McDonalds, and they proceed to pull out onto Bangalow Road in front of cars actually going to the traffic lights to turn left.

This confusion in the turn left lane has nearly caused several near misses to me when appropriately indicating to use that lane to turn left onto Kerr St.

There should be some clearer indication to the entrance and exit for traffic to and from McDonalds given it is in such close proximity to the Traffic Lights/ busy intersection."

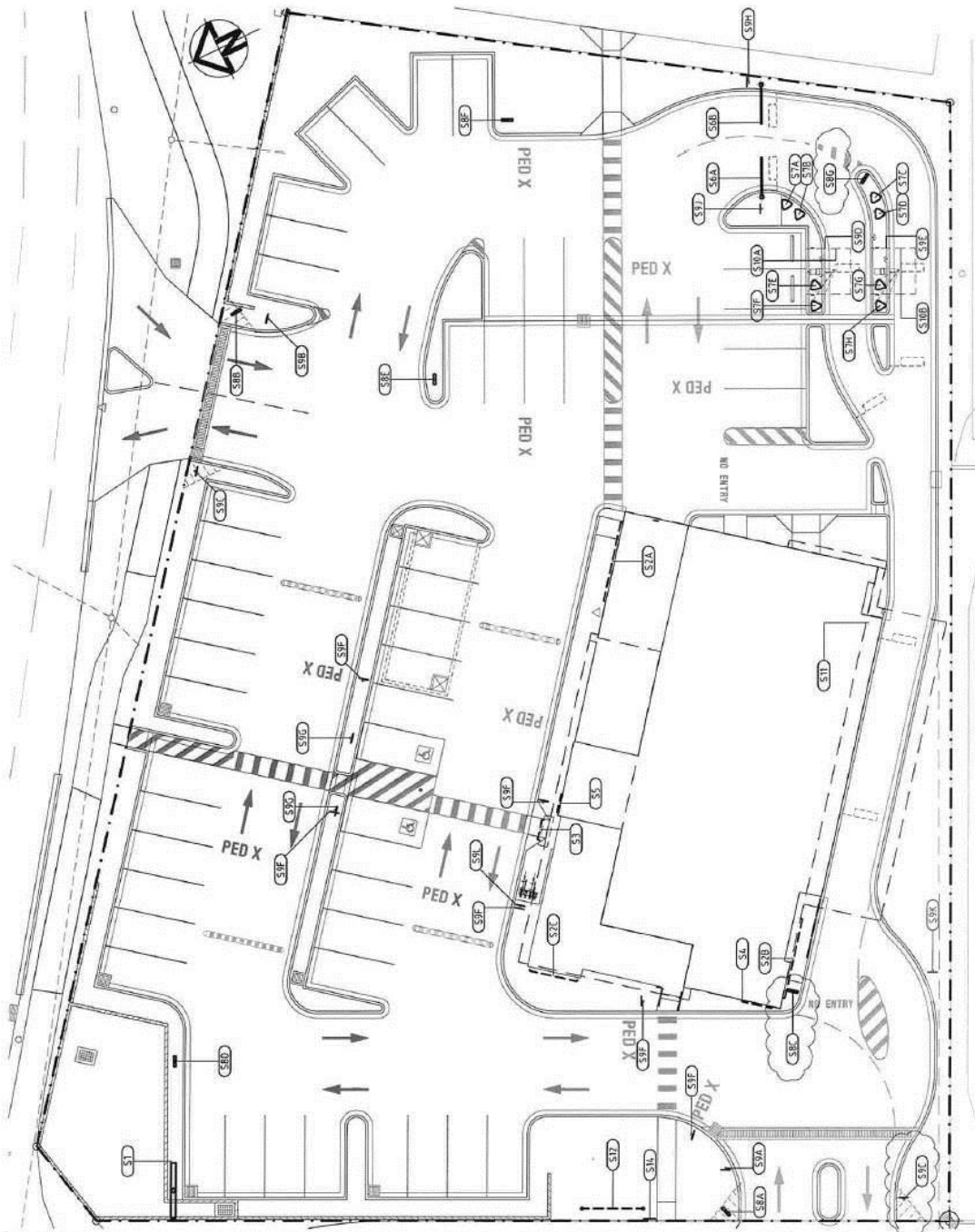
The McDonalds development was approved as DA 2011/87 which approved the current traffic configuration. Both exits (Kerr Street and Bangalow Road) are controlled by STOP signs).

RECOMMENDATION

The Committee provide Traffic Engineering advice regarding vehicles exiting from McDonalds conflicting with westbound left turning traffic in Bangalow Road approaching the Kerr Street traffic signals.

Attachment(s)

1. McDonalds Signage



SIGNAGE SCHEDULE		ILL
------------------	--	-----

8.1 Ballina Shire Bike Plan

8. Information for the Committee

8.1 Ballina Shire Bike Plan

Introduction

Preparation of a Bike Plan for Ballina Shire is an identified action under the Ballina Shire Council Road Safety Strategy.

Council contracted consultants Ross Planning to prepare the Plan. The Plan addresses issues such as shared path connections, cycling facilities, cycling safety and promotion of cycling within the community for the Shire over the next 10 years.

A Draft Ballina Shire Bike Plan was adopted by Council on 27 April 2017, subject to specified amendments to maps and actions.

Information

Amendments to the Ballina Shire Bike Plan were completed in June, and the Plan has been finalized.

The Plan has been digitally loaded onto the Ballina Council website and a copy of the Plan is being held at the Customer Service Counter in Cherry Street until the end of August 2017.

A media release was used to promote the completion of the Bike Plan.

Specific high priority actions within the Bike Plan are currently being reviewed for implementation.

RECOMMENDATION

That the Committee note the completion of action on the Ballina Shire Bike Plan.

Attachment(s)

Nil

8.2 Pedestrian Access and Mobility Plan Update

8.2 Pedestrian Access and Mobility Plan Update

Introduction

Council is undertaking the development of a new Pedestrian Access and Mobility Plan (PAMP) during 2016-2017.

The PAMP will identify footpath planning needs including connections, crossings and refuges, line marking, ramps, and other fixtures such as lighting and signage. Data for the PAMP is collected using literature research, analysis of pedestrian crash data, and community consultation.

Issues identified through the PAMP process are subject to a footpath audit and prioritization. The information is used to create a works schedule for footpaths for the Shire. It is also used to attract funding to implement the PAMP.

Information

Around 280 community suggestions were submitted for the PAMP. An audit of all submissions is nearing completion, and a list of prioritized works is being compiled.

Once this process is complete, all prioritized PAMP works will be mapped.

It is anticipated that the PAMP will be complete by the end of August 2017.

RECOMMENDATION

That the Committee note the update on the Pedestrian Access and Mobility Plan.

Attachment(s)

Nil

8.3 Schedule of Outstanding Resolutions of the Committee

8.3 Schedule of Outstanding Resolutions of the Committee

Introduction

A list of outstanding resolutions from previous meetings of the Local Traffic Committee follows.

Information

Meeting Held 14 June 2017

6/17-6.4 Proposed NO STOPPING Zone - Skennars Head Road, Lennox Head

Recommendation

The Committee deferred a decision on provision of a NO STOPPING zone on the north side of Skennars Head Road, Lennox Head from Henderson Drive to the existing NO STOPPING zone adjacent to The Coast Road intersection pending a check of the design for expansion of the sporting fields and provision of onsite parking.

Action to Date

The designs are not completed, however based on DA Plans the existing parking provision is for approximately 112 cars and the new layout will provide for an additional 87 cars.

The section of proposed NO STOPPING on the north side of Skennars Head Road between the existing pedestrian refuge and the Sportsground entrance is 150 m (27 parking spaces) and the section between the Sportsground entrance and Henderson Drive is 215 (39 spaces).

Meeting Held 8 February 2017

2/17-7.1 Parking Issues in Lane Behind Santa Fe Motel, Between Stewart & Gibbon Streets, Lennox Head

Recommendation

The Committee shares the concerns of residents and agreed to monitor and then review the situation when the duplex has been constructed.

Action to Date

Site being monitored

Meeting Held 14 December 2016

12/16-6.1 Pedestrian Traffic Lights - Kerr Street & Bangalow Road, Ballina

Recommendation

The Committee referred the pedestrian phasing to Council for further investigation

Action to Date

Further action under consideration

12/16-10.1 Compton Drive, East Ballina

Recommendation

Council investigate installation of a “speed table” in Cedar Crescent, East Ballina at the Compton Drive intersection to slow vehicles turning left from Compton Drive.

Action to Date

Further action under consideration

Meeting Held 10 August 2016

8/16-7.4 Requests for Speed Limit Variations

Recommendation

The requests for speed limit variations in Rifle Range Road, Wollongbar and Skennars Head Road, Skennars Head including Council comments be forwarded to NSW Road and Maritime Services for consideration.

Action to Date

Forwarded to RMS by letter dated 2 September 2016

Meeting Held 11 February 2015

2/15-7.1 Bicycle Rider Behaviour on Shared Paths

Recommendations

The Committee notes the report and that Council:

1. Consider an education program for cyclists and pedestrians using shared paths.
2. Review the signage on shared paths where appropriate.

Action to Date

Yet to be implemented. To be reactivated when new Road Safety Officer available.

Meeting Held 8 October 2014

10/14-6.1 Review of Marked Pedestrian Crossings in Ballina Shire

Recommendations

1. Crossings 3 (Links Avenue, Ballina), 4 (Bangalow Road, Ballina), 7, 8, 9 & 10 (Cherry Street, Ballina), 11 (Crane Street, Ballina) and 14 (River Street, Ballina West of Norton Street intersection) be prioritised for review in the 2014/15 period.
2. The review assess the warrant, signage, lighting, geometry, approaches, performance, traffic/safety issues, desirable improvements and other relevant issues for each crossing and recommend actions for retention, improvement, amendment or removal of each site assessed.
3. A further report be provided to the Committee in regard to outcomes of investigations from Point 1 above and that Council consider a target program date to complete the whole program.

Action to Date

Assessment of warrants for designated crossings in Ballina for 2014/15 completed and reported to Committee meeting 10 June 2015. Committee recommendation to remove a number of crossings submitted to Council meeting 25 June 2015 and recommendation rejected.

All pedestrian crossings in the Shire have been audited for compliance with the Australian Standard during 2015. They have had lines re-marked and signage replaced as required. The only pedestrian crossing that required any foliage trimming was in River Street mid-block between Grant Street & Moon Street and this was completed in September 2015.

10/14-7.2 Issues at Alstonville High School

Recommendations

1. Bus Zone Coral Street, Alstonville adjacent to Walkway to High School:
 - a) The 87 m long BUS ZONE in Coral Street be reduced in length to provide one bus space only (the eastern most part of the existing bus zone) and this remnant BUS ZONE be active for the period, "2:30 – 4pm School Days".

8.3 Schedule of Outstanding Resolutions of the Committee

- b) The remainder of the current BUS ZONE be converted to NO PARKING (drop off/pick up), 8 – 9:30 am and 2:30 – 4 pm, School Days.
2. The NO PARKING (drop off/pick up) zone in Cawley Close, opposite the school be extended northwards to accommodate approximately two more cars.
3. A section of Angle Parking be provided on the south side of Coral Street, adjacent to Cawley Park (Lot 155 DP 244651 and Lot 4 DP 554136).”

Action to date

1. Completed
2. Completed
3. Awaiting works to construct parking area.

6/14-7.3 Need for Additional Loading Zones - Lennox Head CBD

Recommendation

That the Committee consult with the Lennox Head Chamber of Commerce for suggestions and feedback on the need and placement of Loading Zones in the Lennox Head CBD.

Action to Date

Letter sent to Chamber President 24 June 2014 requesting meeting. Letter forwarded to new President March 2015.

Meeting Held 9 April 2014

4/14-7.4 Speed Limit Bentinck Street, Ballina

Recommendation

That subject to the concurrence of Council a review of remnant 60kph zones in the Ballina area be referred to RMS.

Action to date

Review by RMS initiated. Council to send RMS relevant traffic data not more than two years old showing eighty fifth percentile speeds. RMS are to conduct site inspection in consultation with Council.

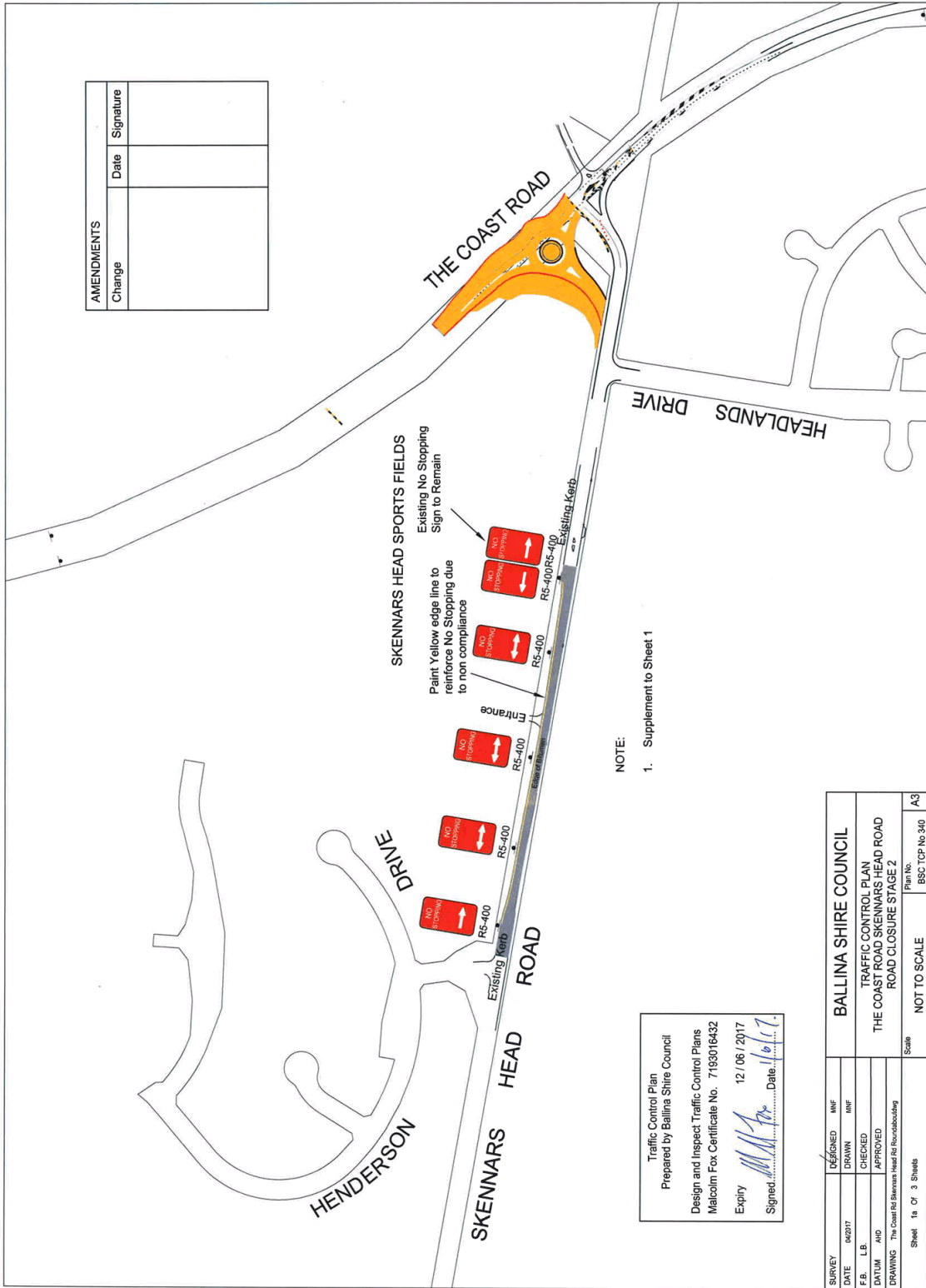
Further advice from RMS 4 February 2016 is that they are in the process of conducting the speed zone review.

RECOMMENDATIONS

1. The Committee support provision of a NO STOPPING zone on the north side of Skennars Head Road, Lennox Head from Henderson Drive to the existing NO STOPPING zone adjacent to The Coast Road intersection.
2. The Committee note the information in the report regarding the Schedule of Outstanding Resolutions.

Attachment(s)

1. Proposed NO STOPPING Skennars Head Road



- 10 Items Without Notice
 - 11 Next Meeting
-

9. Regulatory Matters on Classified Roads (GM's Delegate)

Nil Items

10. Items Without Notice

11. Next Meeting

Next meeting is scheduled for Wednesday 11 October 2017 at 10.00am.