

STAGE 1



PHOTO OF EXISTING ROAD AND OPEN SPACE  
current



INTERPRETATIVE ILLUSTRATION OF PROPOSED OPEN SPACE  
proposed

LAKE AINSWORTH EASTERN RECREATION AREA (SOUTH)



PHOTO OF EXISTING ROAD AND OPEN SPACE  
current



INTERPRETATIVE ILLUSTRATION OF PROPOSED OPEN SPACE  
proposed

LAKE AINSWORTH EASTERN RECREATION AREA (NORTH)

# Lake Ainsworth south eastern precinct project




LAKE AINSWORTH SOUTH EASTERN PRECINCT - INTERPRETATIVE ILLUSTRATION

*Ballina Shire Council is seeking to improve the Lake Ainsworth's south eastern precinct for current and future generations. Council is currently preparing a development application in respect of the proposed works and construction will commence once the development consent has been finalised.*

The popular recreational area upgrade will include additional barbeques, pathways, picnic tables, formalised parking, erosion rehabilitation and landscaping.

Vehicle access to the eastern road will no longer be available, except for emergency vehicles. A pedestrian walking path will be provided through the eastern precinct. Vehicles wanting to access the Sport and Recreation Centre will need to use Camp Drewe Road on the western side of Lake Ainsworth.

The upgrade will provide improved access for the disabled persons and mobility impaired. This will be achieved by the construction of pedestrian facilities that meet contemporary disabled standards, and this includes the full length of the path proposed for the eastern side of the lake. Ramps providing access to the water are proposed for both the southern and eastern foreshores. New disabled parking

facilities will be provided on the southern road and in the area adjacent to the junction of the eastern path and southern road.

The \$1.7M investment is set to improve the overall amenity of the south eastern precinct, increase the areas available for recreational use and improve the environmental outcomes through enhanced stormwater management systems.


By closing the eastern road people using this location will be able to spend time enjoying the Lake and the surrounding amenity without the inconvenience and risk associated with vehicles moving through the precinct.

We know that some of the community is concerned about the loss of carparking in this precinct, that is why we have recently upgraded Ross Street to provide the additional parking. Council has also constructed carparking in Pacific Parade opposite of the Lennox Head - Alstonville Surf Life Saving Club. Importantly, Stage 2 of this project will also provide more formalised carparking.

The project will consist of three distinct stages of work.

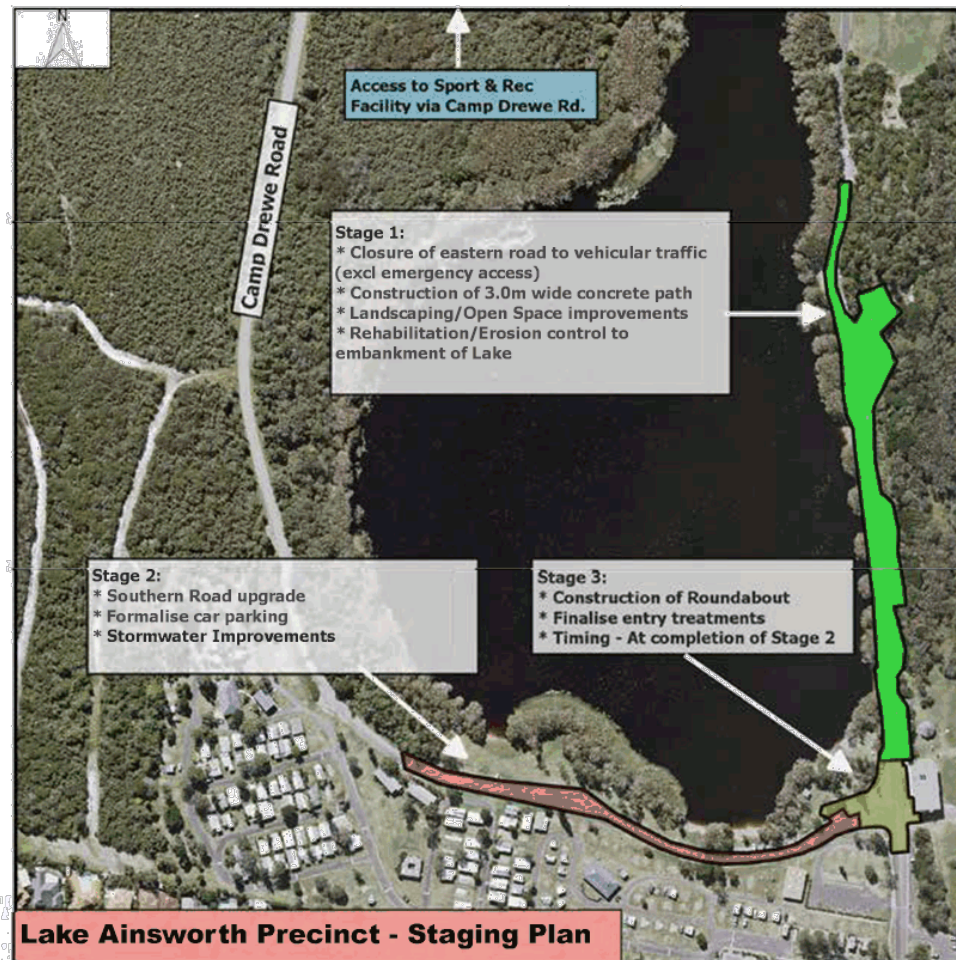
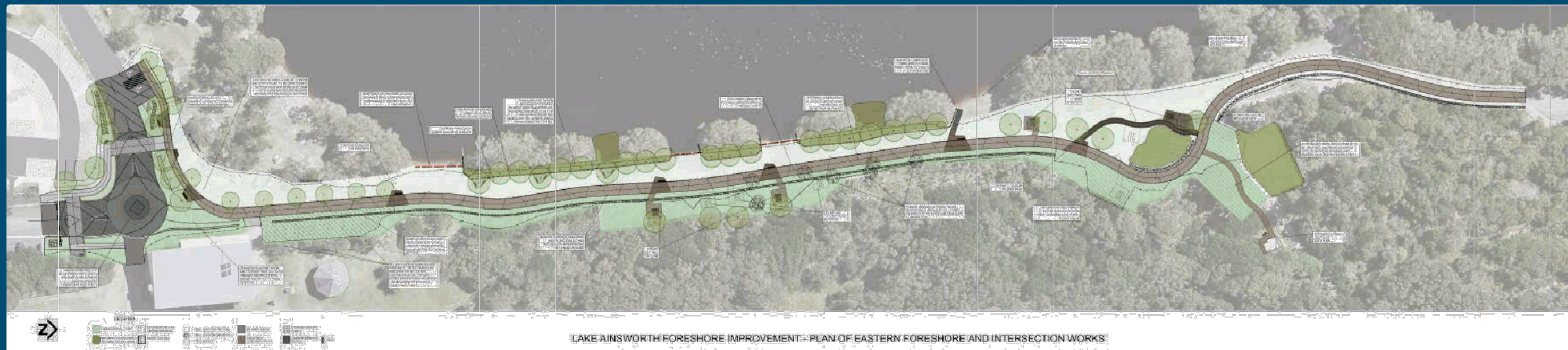
PUBLISHED 27 JULY 2017

**If you have any questions please contact:**  
 Ballina Shire Council, Civil Services Group ph 6686 4444  
 To view the full concept plans visit Council's website  
[ballina.nsw.gov.au](http://ballina.nsw.gov.au) (search Lake Ainsworth)





# » Lake Ainsworth south eastern precinct project



## » Stage 1: eastern road precinct (green)

The road closure of the eastern road precinct will comprise water main relocation followed by path construction and landscaping. The path will be completed in sections to ensure the space is still accessible and usable for pedestrians. Other works will include:

- closure of the Lake Ainsworth eastern road to vehicles
- 3m wide accessible pathway
- BBQ facilities and picnic areas
- sandstone block seats amongst open spaces
- increased grassed areas
- improved stormwater quality management systems
- restoring and revegetating the eroded foreshore areas.

**Timeline:** deferred until updated approval is obtained.

**Budget:** \$800,000 including Stage 3.

## » Stage 2: southern road precinct (red)

The second stage will introduce additional parking for Lake visitors.

- formalisation of the carpark to create additional parking
- restoration and revegetation of the eroded foreshore areas.

**Budget:** \$900,000.

## » Stage 3: roundabout construction (yellow)

The third stage is expected will ensure better traffic flow.

- roundabout construction adjacent to the Lennox Head - Alstonville Surf Life Saving Club
- architectural features for road and path surfacing.

**Budget:** Included with Stage 1.

## » FAQs

### How much carparking will be provided?

The loss of carparking along the eastern road has been replaced with formalised parking on Ross Street (31 spaces) and the carpark across the road from the Lennox Head - Alstonville Surf Life Saving Club (LHASLSC) provides 58 spaces. The reconstruction of the southern road will provide additional grassed car spaces, similar to the recent extension of the carpark across the road from the LHASLSC, with an estimate of 70 more spaces.

### How do I access the off-leash dog area on Seven Mile Beach?

Dog owners are encouraged to access the dog off-leash area on Seven Mile Beach north of the LHASLSC. However, the eastern road will remain open for pedestrian access wherever possible during construction. In this area dogs must be restrained on a leash until the designated off-leash area of Seven Mile Beach.

### How do I access the Lake if I use a wheelchair or scooter?

The eastern road will remain open for pedestrian access during construction. Disabled carparking is available at the carpark adjacent to the LHASLSC.

### How do I access the Sport and Recreation Centre and Camp Drewe?

Vehicle access will be via the western road - Camp Drewe Road.

### How long will the project take?

The commencement date for construction will be determined once the development consent for the project has been finalised. The project will be completed in three stages and the total time required for the construction is expected to be around six months.