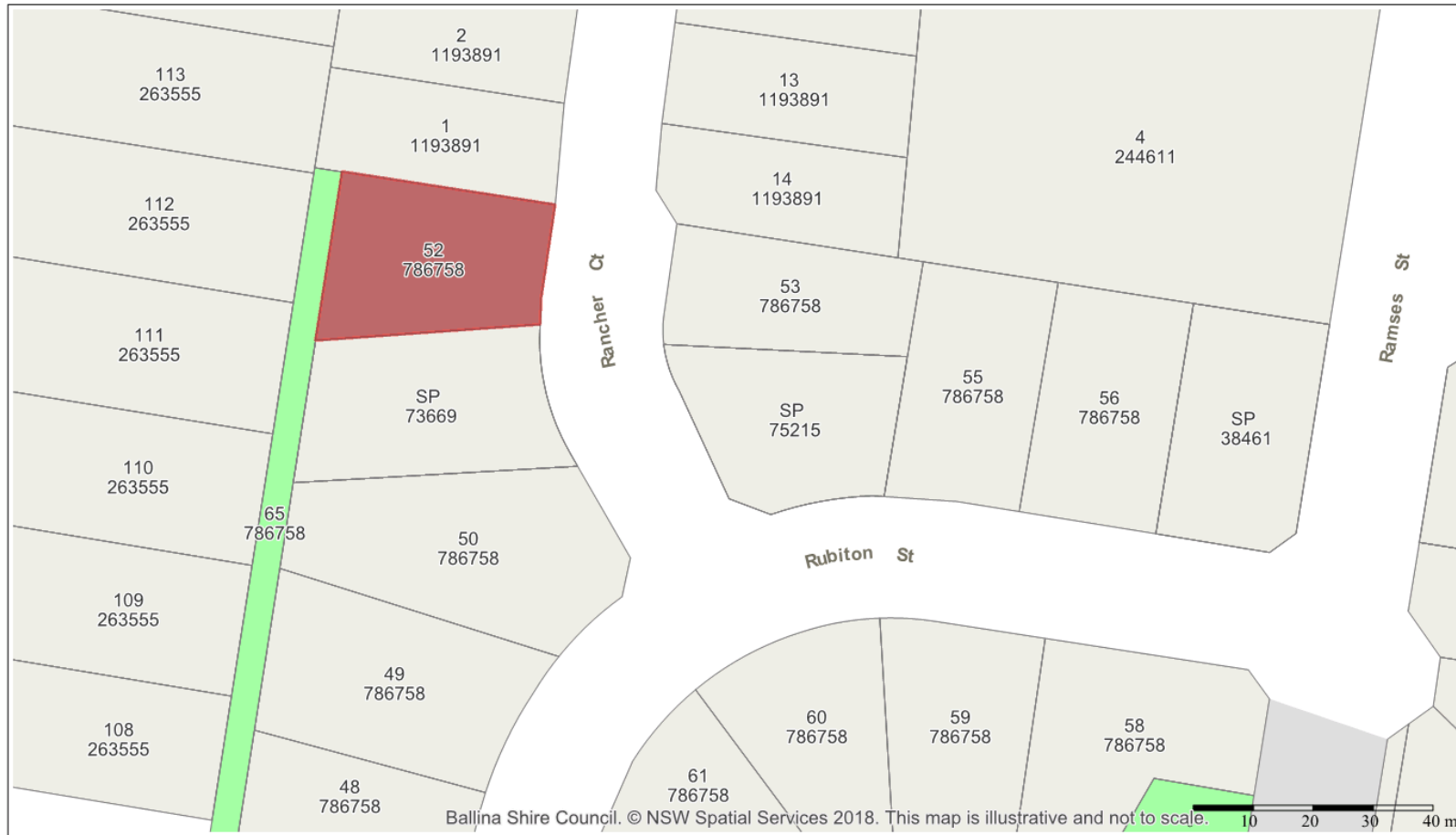


8.4 **DA 2017/675 - 5 Rancher Court, Wollongbar.DOC**



Ballina Shire Council. © NSW Spatial Services 2018. This map is illustrative and not to scale.

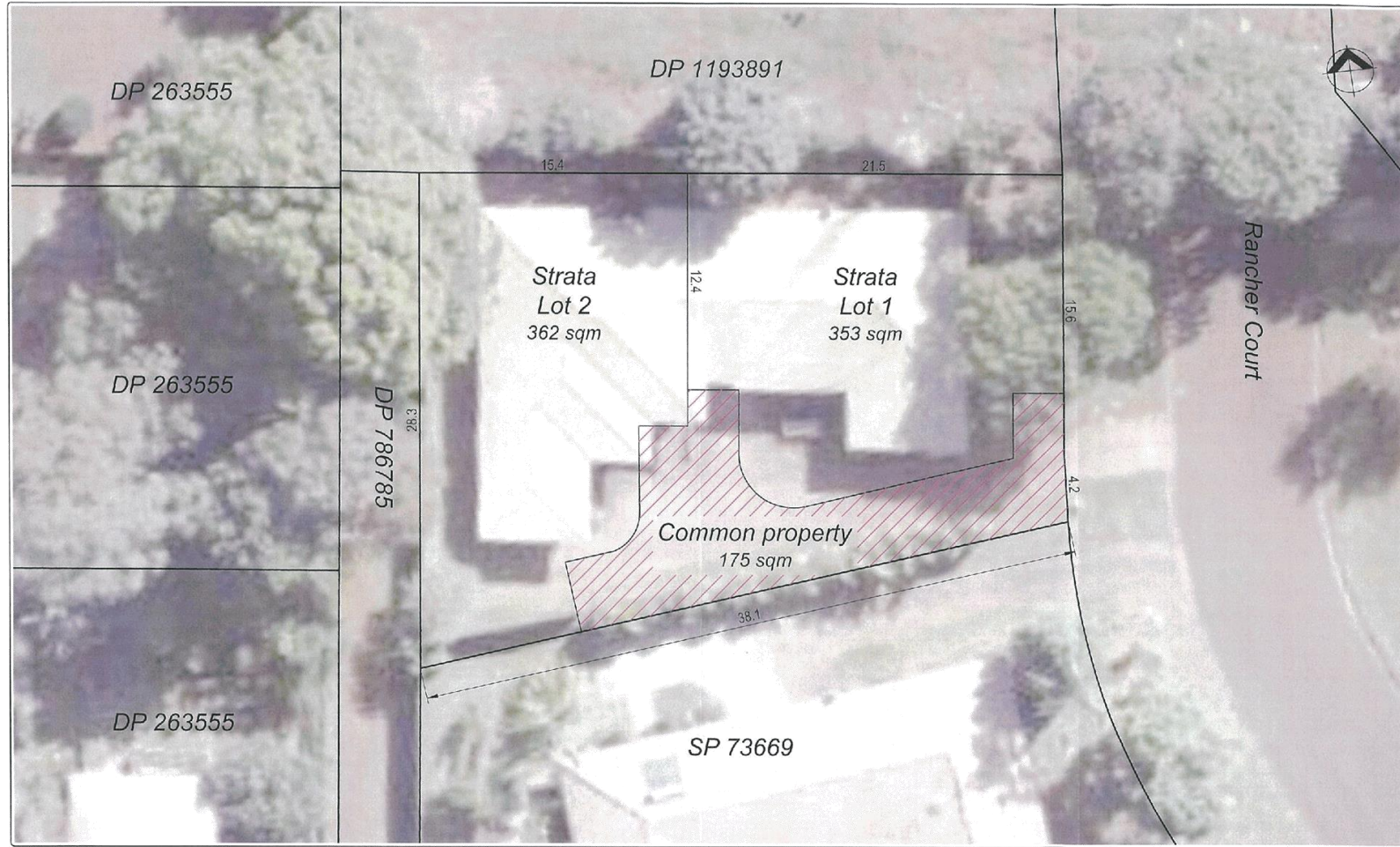
**Ballina Shire Council**  
 40 Cherry Street  
 BALLINA NSW 2478  
 PO Box 450  
 BALLINA NSW 2478  
 02 6686 4444  
 council@ballina.nsw.gov.au  
 www.ballina.nsw.gov.au



**DA 2017/675 - Locality Plan - Lot 52 DP 786758, No. 5 Rancher Court Wollongbar**

**ballina** shire council  
 geographical information system  
 Projection: GDA94 / MGA zone 56  
 Date: 12/03/2018

© Ballina Shire Council © NSW Land & Property Information www.lpi.nsw.gov.au  
 While every care is taken to ensure the accuracy of this product, Ballina Shire Council and the Local / State / Federal Government departments and Non-Government organisations whom supply datasets, make no representations or warranties about its accuracy, reliability, completeness or suitability for any particular purpose and disclaims all responsibility and all liability (including without limitation, liability in negligence) for all expenses, losses, damages (including indirect or consequential damage) and costs which you might incur as a result of the product being inaccurate or incomplete in any way and for any reason.



Project:  
**Lot 52 DP 786758**  
 5 Rancher Court, Wollongbar

Do not scale drawing. Use written dimensions only  
 This plan is copyright © All rights reserved.

Client: Miles Gillespie Trust

Title: **Plan of Proposed Strata Title Subdivision**

**ARDILL PAYNE**  
 & Partners  
 ENGINEERS PLANNERS SURVEYORS  
 ENVIRONMENTAL PROJECT MANAGEMENT

BALLINA 45 River Street Ph. 02 6888 3280  
 GUNNEDAH 285 Conedilly Street Ph. 02 6742 9955

A.B.N. 51 808 558 977 e-mail: info@ardillpayne.com.au

Designed	PS	Scale	1:200 @ A3
Drawn	MB	0 2 4 6 8 10	
Checked	PS	File Name	8521 Strata Title Subdivision Plan.dwg
Approved	PS	Date	27/11/2017
Job No.	8521	Dwg No.	01
		Issue	01