

**COPYRIGHT**  
 All rights reserved. This work is copyright and cannot be reproduced or copied in any form or by any means (graphic, electronic or mechanical, including photocopying) without the written permission of pdt architects. Any licence, express or implied, to use the document for any purpose whatsoever is restricted to the terms of the agreement or implied agreement with PDT Architects.

**DIMENSIONS**  
 Use figured dimensions only. DO NOT SCALE. Check all dimensions on site prior to fabrication or setout.

0 5 10 15 20 25 m  
**SCALE 1:500**

**tender issue**

**drawing authors**  
 sheet setup date 09.11.17  
 dwg authors M. SEVILLA  
 project leader O. THESSMAN

authorised for issue by project leader  
 signature \_\_\_\_\_ date \_\_\_\_\_

amendments date	issue	description	checked by auth	proj idr
10.11.17	1	DRAFT PRELIMINARY ISSUE	MS	OT
15.11.17	2	REVISED DRAFT PRELIM ISSUE	MS	OT
24.11.17	3	DA ISSUE	MS	OT
11.12.17	4	DA ISSUE	MS	OT
19.01.18	5	UPDATED DA ISSUE	MS	OT
13.03.18	6	CHANGES TO CARPARK	MS	OT
23.03.18	7	REVISED DA ISSUE	CH	OT
06.04.18	8	PRELIM. TENDER ISSUE	CH	OT
23.04.18	9	PRE-TENDER ISSUE	CH	OT
22.06.18	10	TENDER ISSUE	CH	OT



www.pdt.com.au  
 level 3, 100 mcclachlan street fortitude valley 4006 1+61 7 3232 1300  
 po box 607 fortitude valley qld 4006 quality assurance AS/NZS ISO 9001

project details  
**BALLINA INDOOR SPORTS CENTRE**  
 40 CHERRY STREET BALLINA NSW

sheet title  
**SITE PLAN OVERALL**

issue date	scale @ A1	stage
22.06.18	As indicated	SD
job no.	dwg no.	revision
8385	A 01-02	10

original sheet size A1 (594 x 841mm)

**SITE NOTES**

- REFER LANDSCAPE/ARBORIST FOR TPZ - TREE PROTECTION ZONE REQUIREMENTS

**GENERAL NOTES**

- ALL DRAWINGS ARE TO BE READ IN CONJUNCTION WITH THE GENERAL NOTES, DWG. A 00-02
- USE FIGURED DIMENSIONS ONLY. DO NOT SCALE FROM DRAWINGS. CHECK ALL DIMENSIONS ON SITE BEFORE SETOUT OR FABRICATION.
- THE CONTRACTOR MUST VERIFY AND CHECK ALL SITE CONDITIONS INCLUDING CEILING HEIGHTS AND DIMENSIONS BEFORE COMMENCING WORK ON SITE.

**ABBREVIATIONS**

HWN	HIGH LEVEL WINDOW
LV	GLASS LOUVRES
LVISC	SAFETY LOUVRES WITH POWDERCOATED SECURITY SCREEN
RD	POWDERCOATED ROLLER DOOR
RS	POWDERCOATED ROLLER SHUTTER
RWT	RAINWATER TANK - CONNECT ROOF WATER DRAINAGE TO RWT, REFER TO HYDRAULIC ENGINEER
WN	WINDOW

**COPYRIGHT**  
All rights reserved. This work is copyright and cannot be reproduced or copied in any form or by any means (graphic, electronic or mechanical, including photocopying) without the written permission of pdt architects. Any licence, express or implied, to use the document for any purpose whatsoever is restricted to the terms of the agreement or implied agreement with PDT Architects.

**DIMENSIONS**  
Use figured dimensions only. DO NOT SCALE. Check all dimensions on site prior to fabrication or setout.

SCALE 1:100

**tender issue**

**drawing authors**

sheet setup date	
dwg authors	M. SEVILLA
project leader	O. THESSMAN

authorised for issue by project leader

signature \_\_\_\_\_ date \_\_\_\_\_

**COURTS MARKING LEGEND**

---	2 BASKETBALL / FUTSAL COURTS
---	2 NETBALL / FAST5 NETBALL COURTS
---	6 PRACTICE VOLLEYBALL COURTS
---	2 PLAYING VOLLEYBALL COURTS
---	1 HOCKEY COURT

**COURT MARKING NOTES**

- ALL BASKETBALL LINE MARKINGS, CLEARANCES AND EQUIPMENT TO COMPLY WITH THE INTERNAL BASKETBALL FEDERATION (FIBA) STANDARDS, RULES AND REGULATIONS.
- ALL NETBALL LINE MARKINGS, OVERRUN CLEARANCES AND EQUIPMENT TO COMPLY WITH THE INTERNATIONAL NETBALL FEDERATION (INF) STANDARDS, RULES AND REGULATIONS.

**GENERAL NOTES**

- ALL DRAWINGS ARE TO BE READ IN CONJUNCTION WITH THE GENERAL NOTES, DWG. A 00-02
- USE FIGURED DIMENSIONS ONLY. DO NOT SCALE FROM DRAWINGS. CHECK ALL DIMENSIONS ON SITE BEFORE SETOUT OR FABRICATION.
- THE CONTRACTOR MUST VERIFY AND CHECK ALL SITE CONDITIONS INCLUDING CEILING HEIGHTS AND DIMENSIONS BEFORE COMMENCING WORK ON SITE.

**amendments**

date	issue	description	checked by	auth	proj ldr
10.11.17	1	DRAFT PRELIMINARY ISSUE	MS	OT	
15.11.17	2	REVISED DRAFT PRELIM ISSUE	MS	OT	
24.11.17	3	DA ISSUE	MS	OT	
11.12.17	4	DA ISSUE	MS	OT	
19.01.18	5	UPDATED DA ISSUE	MS	OT	
23.03.18	6	REVISED DA ISSUE	CH	OT	
06.04.18	7	PRELIM. TENDER ISSUE	CH	OT	
23.04.18	8	PRE-TENDER ISSUE	CH	OT	
22.06.18	9	TENDER ISSUE	CH	OT	

**OCCUPANCY**

■	AMENITIES
■	FOYER / CIRCULATION
■	KIOSK / OFFICE
■	SPORTING FACILITY
■	Calculating...

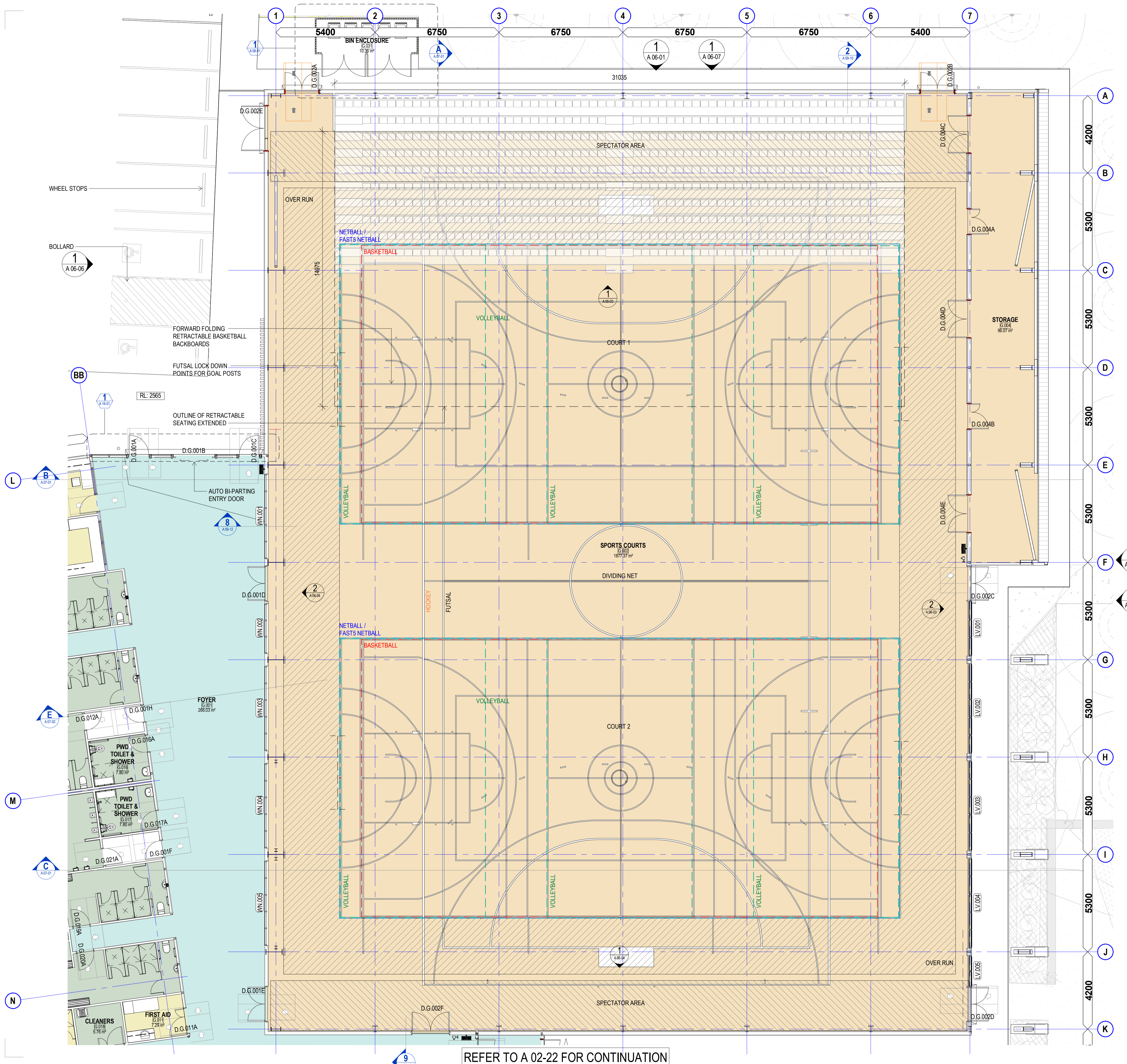


www.pdt.com.au  
level 3, 100 mcclachlan street fortitude valley 4006 t +61 7 3232 1300  
po box 607 fortitude valley qld 4006 quality assurance AS/NZS ISO 9001

project details  
**BALLINA INDOOR SPORTS CENTRE**  
40 CHERRY STREET BALLINA NSW

sheet title  
**GENERAL ARRANGEMENT PLAN (PART A)**

issue date	scale @ A1	stage
22.06.18	1:100	SD
job no.	dwg no.	revision
8385	A 02-21	9



REFER TO A 02-22 FOR CONTINUATION

REFER TO A 02-21 FOR CONTINUATION

**COPYRIGHT**  
All rights reserved. This work is copyright and cannot be reproduced or copied in any form or by any means (graphic, electronic or mechanical, including photocopying) without the written permission of pdt architects. Any license, express or implied, to use the document for any purpose whatsoever is restricted to the terms of the agreement or implied agreement with PDT Architects.

**DIMENSIONS**  
Use figured dimensions only. DO NOT SCALE. Check all dimensions on site prior to fabrication or setout.

0 1 2 3 4 5m  
SCALE 1:100

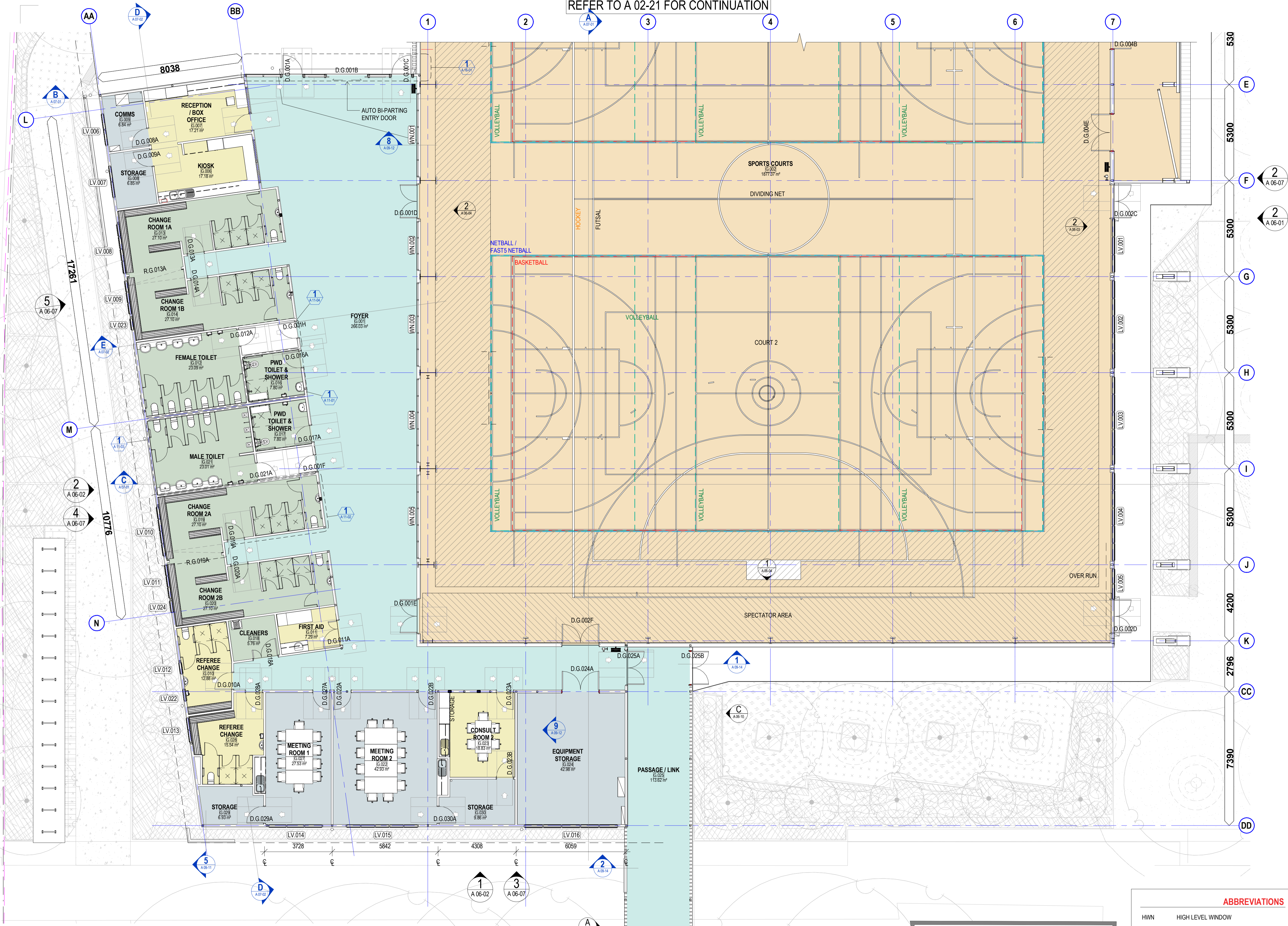
tender issue

**drawing authors**

sheet setup date	
dwg authors	M. SEVILLA
project leader	O. THESSMAN
authorised for issue by project leader	
signature	date

**amendments**

date	issue	description	checked by	auth	proj ldr
10.11.17	1	DRAFT PRELIMINARY ISSUE	MS	OT	
15.11.17	2	REVISED DRAFT PRELIM ISSUE	MS	OT	
24.11.17	3	DA ISSUE	MS	OT	
11.12.17	4	DA ISSUE	MS	OT	
19.01.18	5	UPDATED DA ISSUE	MS	OT	
23.03.18	6	REVISED DA ISSUE	CH	OT	
06.04.18	7	REVISED AMENITIES	CH	OT	
06.04.18	8	PRELIM. TENDER ISSUE	CH	OT	
23.04.18	9	PRE-TENDER ISSUE	CH	OT	
12.06.18	10	REVISED REF CHANGE AND KIOSK / OFFICE	CH	OT	
22.06.18	11	TENDER ISSUE	CH	OT	



**GENERAL NOTES**

- ALL DRAWINGS ARE TO BE READ IN CONJUNCTION WITH THE GENERAL NOTES, DWG. A 00-02
- USE FIGURED DIMENSIONS ONLY. DO NOT SCALE FROM DRAWINGS. CHECK ALL DIMENSIONS ON SITE BEFORE SETOUT OR FABRICATION.
- THE CONTRACTOR MUST VERIFY AND CHECK ALL SITE CONDITIONS INCLUDING CEILING HEIGHTS AND DIMENSIONS BEFORE COMMENCING WORK ON SITE.

**COURTS MARKING LEGEND**

- 2 BASKETBALL / FUTSAL COURTS
- 2 NETBALL / FAST5 NETBALL COURTS
- 6 PRACTICE VOLLEYBALL COURTS
- 2 PLAYING VOLLEYBALL COURTS
- 1 HOCKEY COURT

**ABBREVIATIONS**

HWN	HIGH LEVEL WINDOW
LV	GLASS LOUVRES
LVISC	SAFETY LOUVRES WITH POWDERCOATED SECURITY SCREEN
RD	POWDERCOATED ROLLER DOOR
RS	POWDERCOATED ROLLER SHUTTER
RWT	RAINWATER TANK - CONNECT ROOF WATER DRAINAGE TO RWT, REFER TO HYDRAULIC ENGINEER
WN	WINDOW

BALLINA HIGH SCHOOL

REFER TO PART PLAN A 02-23 FOR CONTINUATION



www.pdt.com.au  
level 3, 100 mcclachlan street fortitude valley 4006 1+61 7 3232 1300  
po box 607 fortitude valley qld 4006 quality assurance AS/NZS ISO 9001

project details  
**BALLINA INDOOR SPORTS CENTRE**  
40 CHERRY STREET BALLINA NSW

sheet title  
**GENERAL ARRANGEMENT PLAN (PART B)**

issue date	scale @ A1	stage
22.06.18	1:100	SD
job no.	dwg no.	revision
8385	A 02-22	11

**COPYRIGHT**  
All rights reserved. This work is copyright and cannot be reproduced or copied in any form or by any means (graphic, electronic or mechanical, including photocopying) without the written permission of pdt architects. Any licence, express or implied, to use the document for any purpose whatsoever is restricted to the terms of the agreement or implied agreement with PDT Architects.

**DIMENSIONS**  
Use figured dimensions only. DO NOT SCALE. Check all dimensions on site prior to fabrication or setout.

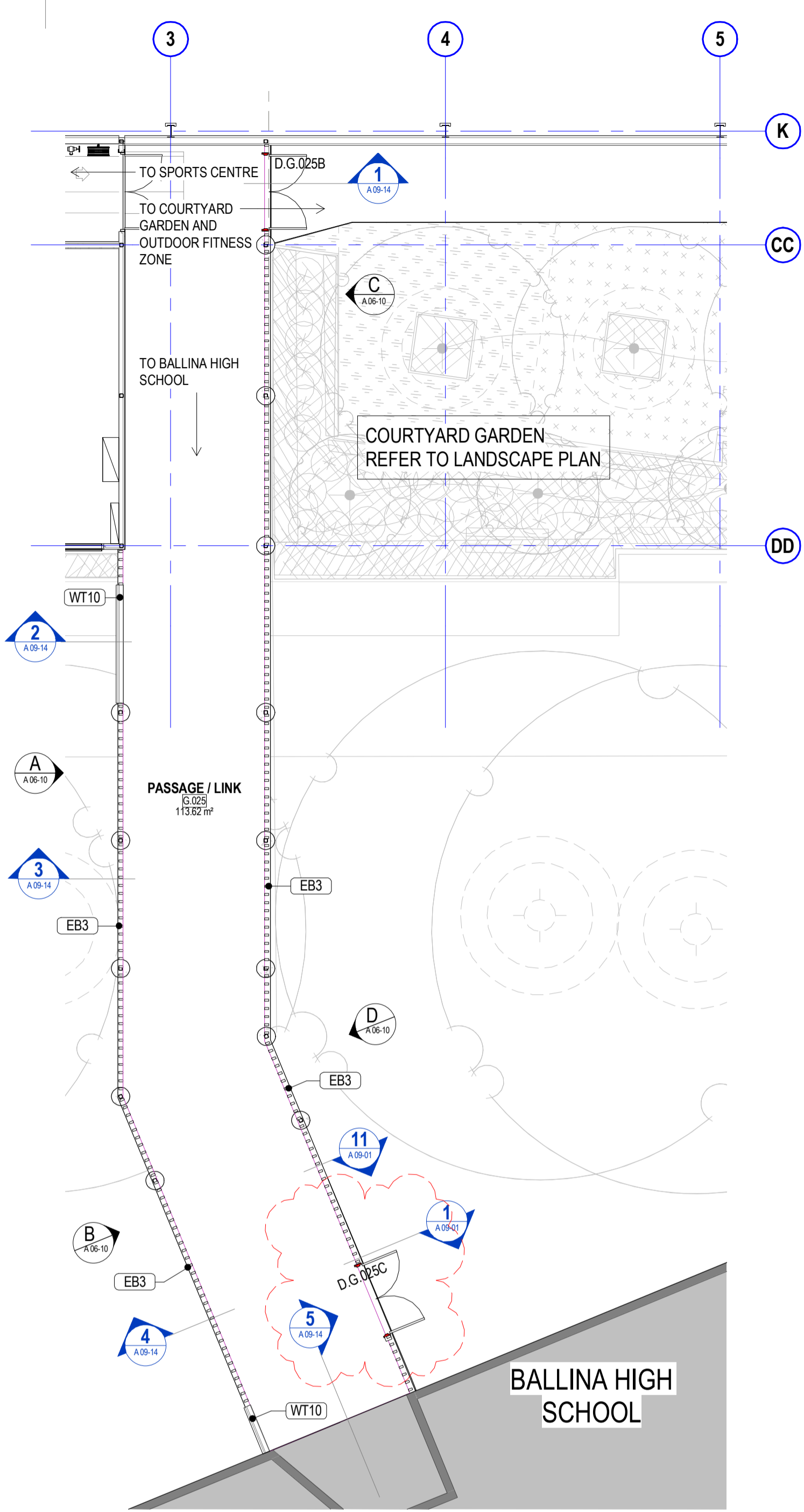
0 1 2 3 4 5 m  
**SCALE 1:100**

**tender issue**

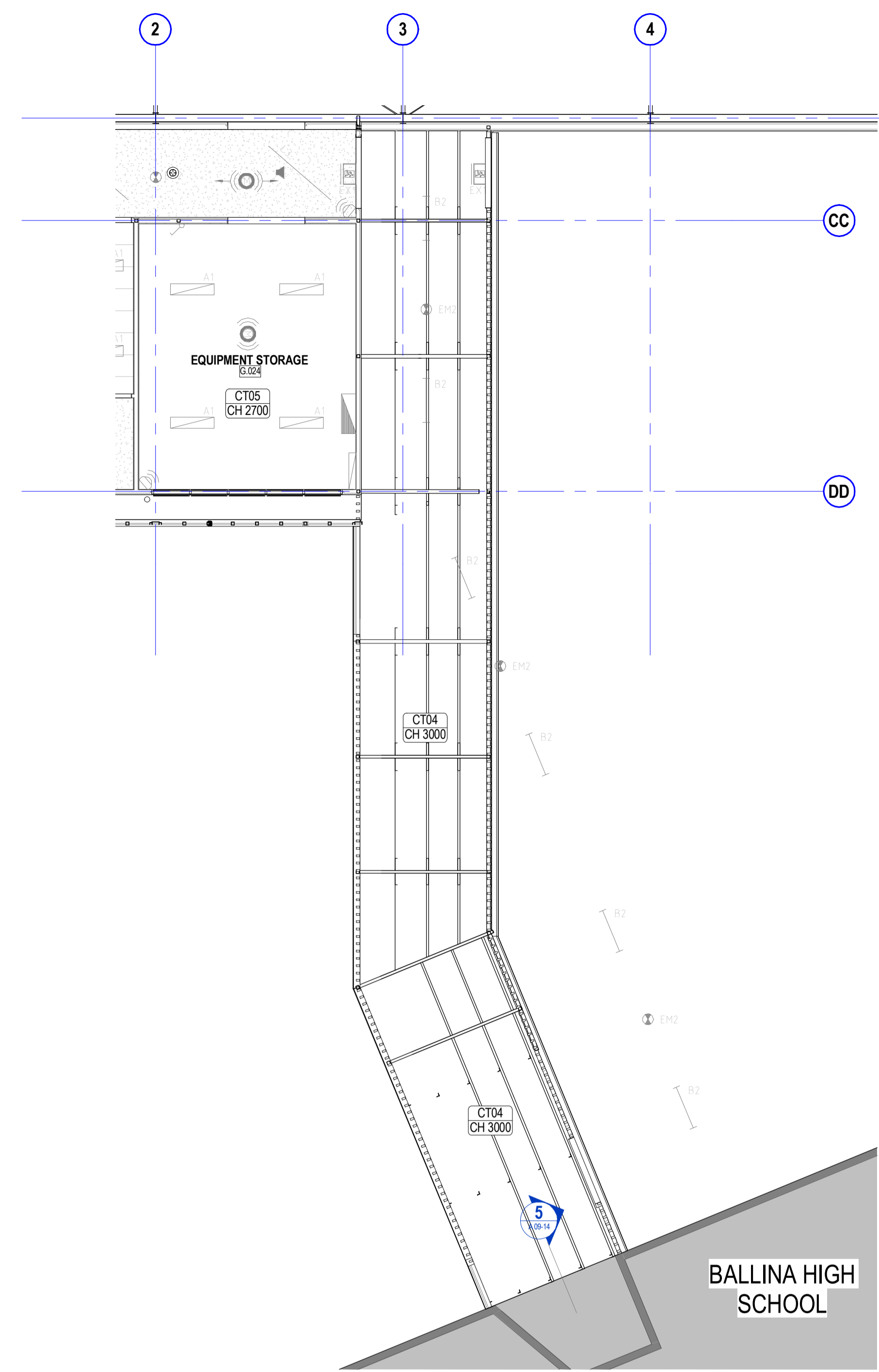
**drawing authors**  
sheet setup date  
dwg authors M. SEVILLA  
project leader O. THESSMAN  
authorised for issue by project leader

signature \_\_\_\_\_ date \_\_\_\_\_

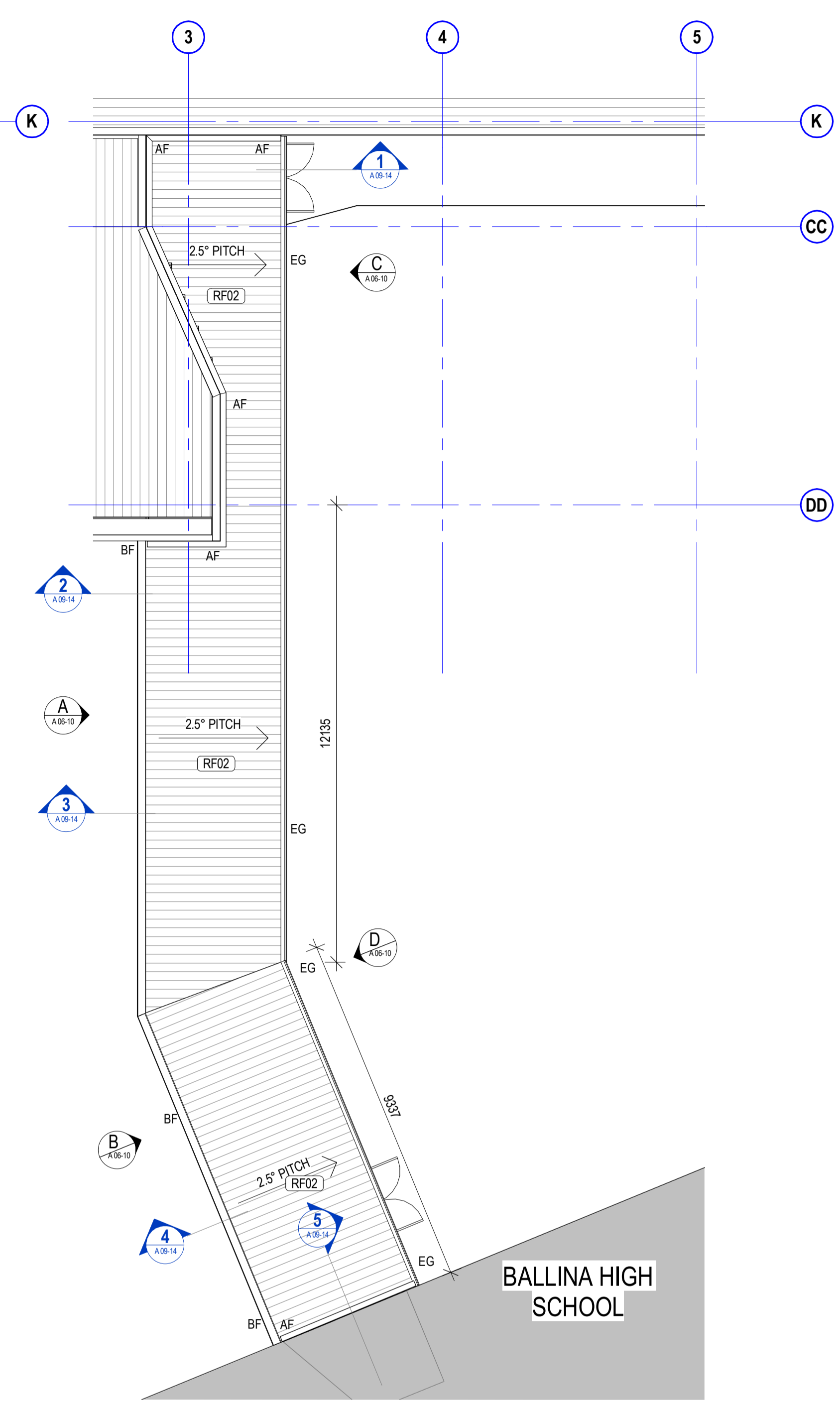
amendments date	issue	description	checked by auth	proj ldr
19.01.18	1	UPDATED DA ISSUE	MS	OT
23.03.18	2	REVISED DA ISSUE	CH	OT
06.04.18	3	PRELIM. TENDER ISSUE	CH	OT
23.04.18	4	PRE-TENDER ISSUE	CH	OT
29.05.18	5	REVISED LINK	CH	OT
14.06.18	6	REVISED LINK	CH	OT
22.06.18	7	TENDER ISSUE	CH	OT



**1 GA GROUND - PASSAGE / LINK**  
SCALE 1:100



**2 RCP - PASSAGE / LINK**  
SCALE 1:100



**3 ROOF PLAN - PASSAGE / LINK**  
SCALE 1:100

A 03-00 PARTITION SCHEDULE	
CODE	DESCRIPTION
WT05	150 Steel Stud with 1x 8mm CFC Type A Sheeting on 35 Furring Channel Side A & 1x 13mm Fire Rated MDF Sheeting on 35 Furring Channel Side B
WT06	150 Steel Stud with 1x 9mm Fibre Cement Side A & 1x 13mm Fire Rated MDF on 35 Furring Channel Side B
WT07	150 Insulated Steel Girt with Aluminium External Cladding Side A & 1x16mm Perforated Custom Orb on Furring Channels Side B
WT10	92 Steel Stud with 1x 43mm Klip-Lok 700 Hi-Strength on 35mm Furring Channel Side A & 1x9mm FC Sheeting Side B
WT12a	92 Insulated Steel Stud with 1x 8mm CFC Type A Sheeting on 35 Furring Channel Side A & 1x 9mm Fibre Cement Side B
WT12b	92 Insulated Steel Stud with 1x 8mm CFC Type B Sheeting on 35 Furring Channel Side A & 1x 9mm Fibre Cement Side B
WT13	92 Steel Stud with 1x 9mm Fibre Cement Side A & 1x 9mm Fibre Cement on Furring Channel Side B
WT14	92 Steel Stud with 1x 9mm Fibre Cement Side A & B
WT15	92 Steel Stud with 1x 9mm Fibre Cement Side A
WT16	92 Steel Stud with 1x 9mm Fibre Cement Side A & 1x13mm Fire Rated MDF Side B
WT20	64 Steel Stud with 1x 9mm Fibre Cement Side A & B
WT25	92 Steel Stud with 1x 9mm Fibre Cement and 1x16mm Fyrcheck Side A & B
WT26	92 Steel Stud with 1x 9mm Fibre Cement and 1x16mm Fyrcheck Side A & 1x 9mm Fibre Cement on Furring Channel and 1x16mm Fyrcheck Side B
WT27	150 Steel Stud with 1x 9mm Fibre Cement and 1x16mm Fyrcheck Side A & 1x 13mm Fire Rated MDF on 35 Furring Channel and 1x16mm Fyrcheck Side B



**pdt.**  
architects  
www.pdt.com.au  
level 3, 100 mcbratton street fortitude valley 4006 1 +61 7 3232 1300  
po box 607 fortitude valley qld 4006 quality assurance AS/NZS ISO 9001

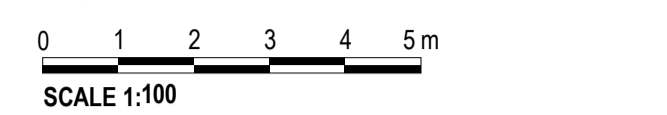
project details  
**BALLINA INDOOR SPORTS CENTRE**  
40 CHERRY STREET BALLINA NSW

sheet title  
**GENERAL ARRANGEMENT PART PLAN - LINK**

issue date	scale @ A1	stage
22.06.18	1:100	SD
job no.	dwg no.	revision
8385	A 02-23	7

**COPYRIGHT**  
All rights reserved. This work is copyright and cannot be reproduced or copied in any form or by any means (graphic, electronic or mechanical, including photocopying) without the written permission of pdt architects. Any licence, express or implied, to use the document for any purpose whatsoever is restricted to the terms of the agreement or implied agreement with PDT Architects.

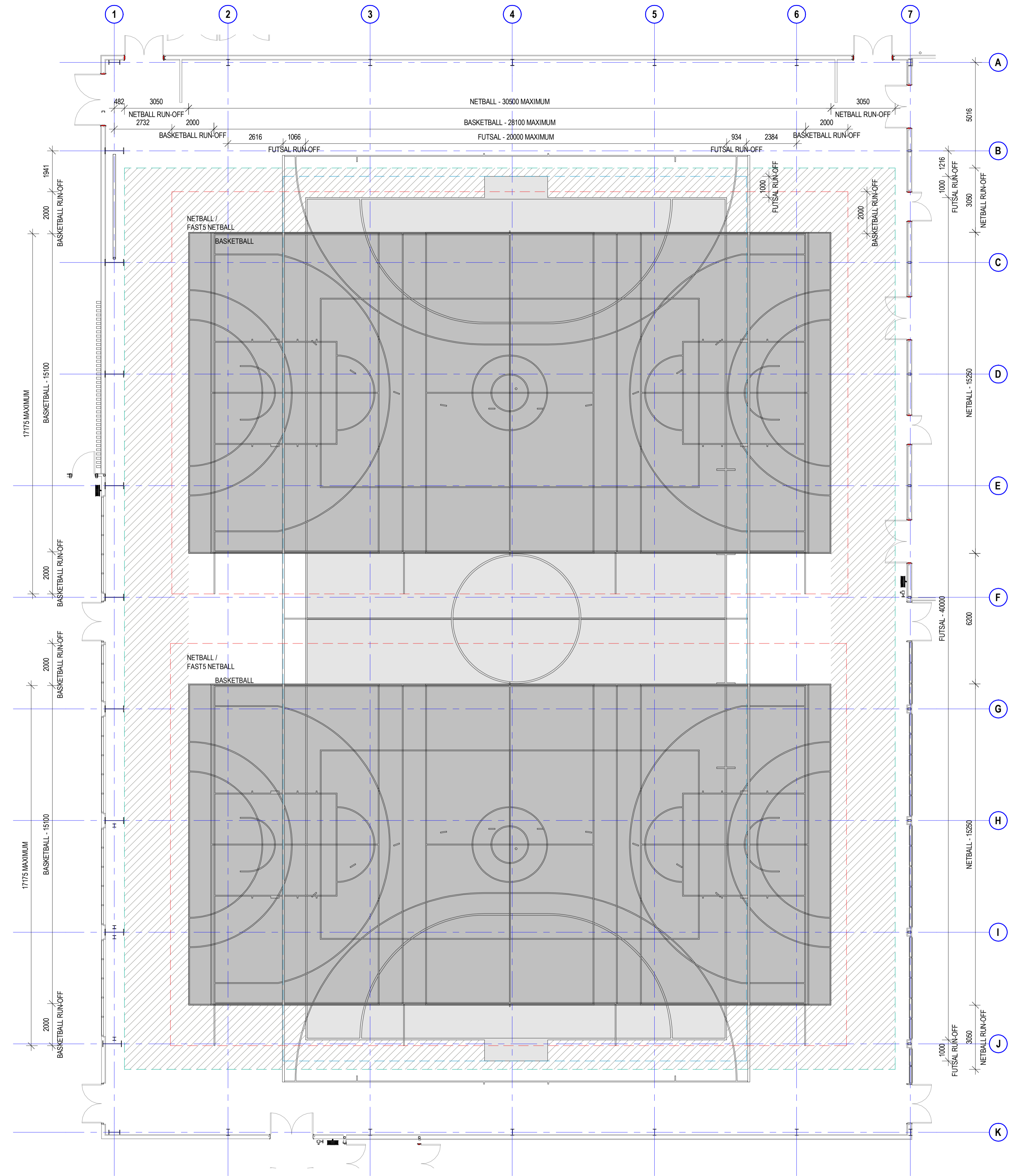
**DIMENSIONS**  
Use figured dimensions only. DO NOT SCALE. Check all dimensions on site prior to fabrication or setout.



**tender issue**

**drawing authors**  
sheet setup date  
dwg authors M. SEVILLA  
project leader O. THESSMAN  
authorised for issue by project leader  
signature \_\_\_\_\_ date \_\_\_\_\_

amendments date	issue	description	checked by auth	proj ldr
26.02.18	1	PRELIMINARY ISSUE	CH	OT
23.03.18	2	REVISED DA ISSUE	CH	OT
06.04.18	3	PRELIM. TENDER ISSUE	CH	OT
23.04.18	4	PRE-TENDER ISSUE	CH	OT
22.06.18	5	TENDER ISSUE	CH	OT



- COURT MARKING NOTES**
- ALL BASKETBALL LINE MARKINGS, CLEARANCES AND EQUIPMENT TO COMPLY WITH THE INTERNATIONAL BASKETBALL FEDERATION (FIBA) STANDARDS, RULES AND REGULATIONS.
  - ALL NETBALL LINE MARKINGS, OVERRUN CLEARANCES AND EQUIPMENT TO COMPLY WITH THE INTERNATIONAL NETBALL FEDERATION (INF) STANDARDS, RULES AND REGULATIONS.
  - READ IN CONJUNCTION WITH DWG A 02-21.
- DENOTES EXTENT OF BASKETBALL RUN-OFF
  - DENOTES EXTENT OF NETBALL RUN-OFF
  - DENOTES EXTENT OF FUTSAL RUN-OFF

- GENERAL NOTES**
- ALL DRAWINGS ARE TO BE READ IN CONJUNCTION WITH THE GENERAL NOTES, DWG. A 00-02
  - USE FIGURED DIMENSIONS ONLY. DO NOT SCALE FROM DRAWINGS. CHECK ALL DIMENSIONS ON SITE BEFORE SETOUT OR FABRICATION.
  - THE CONTRACTOR MUST VERIFY AND CHECK ALL SITE CONDITIONS INCLUDING CEILING HEIGHTS AND DIMENSIONS BEFORE COMMENCING WORK ON SITE.



project details  
**BALLINA INDOOR SPORTS CENTRE**  
40 CHERRY STREET BALLINA NSW

sheet title  
**COURT MARKING PLAN**

issue date	scale @ A1	stage
22.06.18	1 : 100	SD
job no.	dwg no.	revision
8385	A 05-03	5

**COPYRIGHT**  
All rights reserved. This work is copyright and cannot be reproduced or copied in any form or by any means (graphic, electronic or mechanical, including photocopying) without the written permission of pdt architects. Any licence, express or implied, to use the document for any purpose whatsoever is restricted to the terms of the agreement or implied agreement with PDT Architects.

**DIMENSIONS**  
Use figured dimensions only. DO NOT SCALE. Check all dimensions on site prior to fabrication or setout.

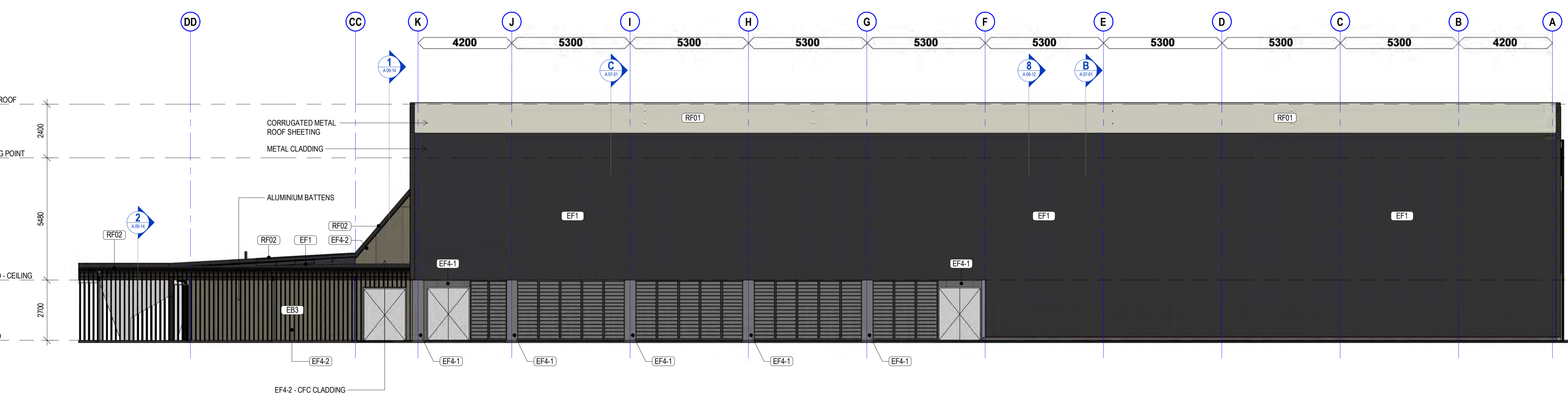
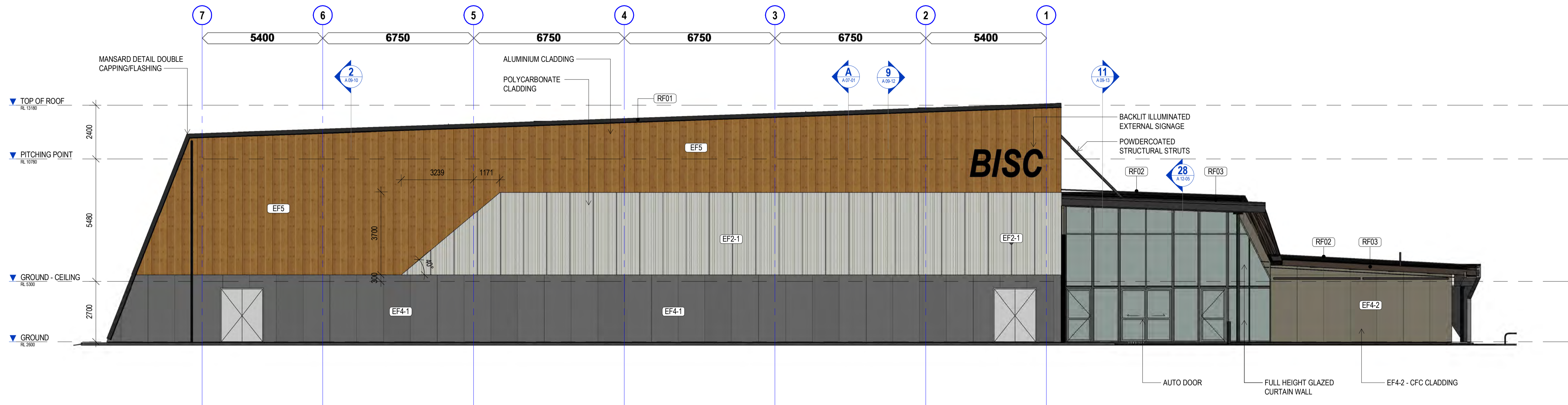
0 1 2 3 4 5 m  
SCALE 1:100

**tender issue**

**drawing authors**  
sheet setup date  
dwg authors M. SEVILLA  
project leader O. THESSMAN  
authorised for issue by project leader

signature \_\_\_\_\_ date \_\_\_\_\_

amendments date	issue	description	checked by auth	proj ldr
10.11.17	1	DRAFT PRELIMINARY ISSUE	MS	OT
15.11.17	2	REVISED DRAFT PRELIM ISSUE	MS	OT
24.11.17	3	DA ISSUE	MS	OT
11.12.17	4	DA ISSUE	MS	OT
19.01.18	5	UPDATED DA ISSUE	MS	OT
23.03.18	6	REVISED DA ISSUE	CH	OT
06.04.18	7	PRELIM. TENDER ISSUE	CH	OT
23.04.18	8	PRE-TENDER ISSUE	CH	OT
22.06.18	9	TENDER ISSUE	CH	OT



project details  
**BALLINA INDOOR SPORTS CENTRE**  
40 CHERRY STREET BALLINA NSW

sheet title  
**OVERALL BUILDING ELEVATIONS - SHEET 1**

issue date	scale @ A1	stage
22.06.18	1:100	SD
job no.	dwg no.	revision
8385	A 06-01	9

**GENERAL NOTES**

- ALL DRAWINGS ARE TO BE READ IN CONJUNCTION WITH THE GENERAL NOTES. DWG. A 00-02
- USE FIGURED DIMENSIONS ONLY. DO NOT SCALE FROM DRAWINGS. CHECK ALL DIMENSIONS ON SITE BEFORE SETOUT OR FABRICATION.
- THE CONTRACTOR MUST VERIFY AND CHECK ALL SITE CONDITIONS INCLUDING CEILING HEIGHTS AND DIMENSIONS BEFORE COMMENCING WORK ON SITE.

**COPYRIGHT**  
All rights reserved. This work is copyright and cannot be reproduced or copied in any form or by any means (graphic, electronic or mechanical, including photocopying) without the written permission of pdt architects. Any licence, express or implied, to use the document for any purpose whatsoever is restricted to the terms of the agreement or implied agreement with PDT Architects.

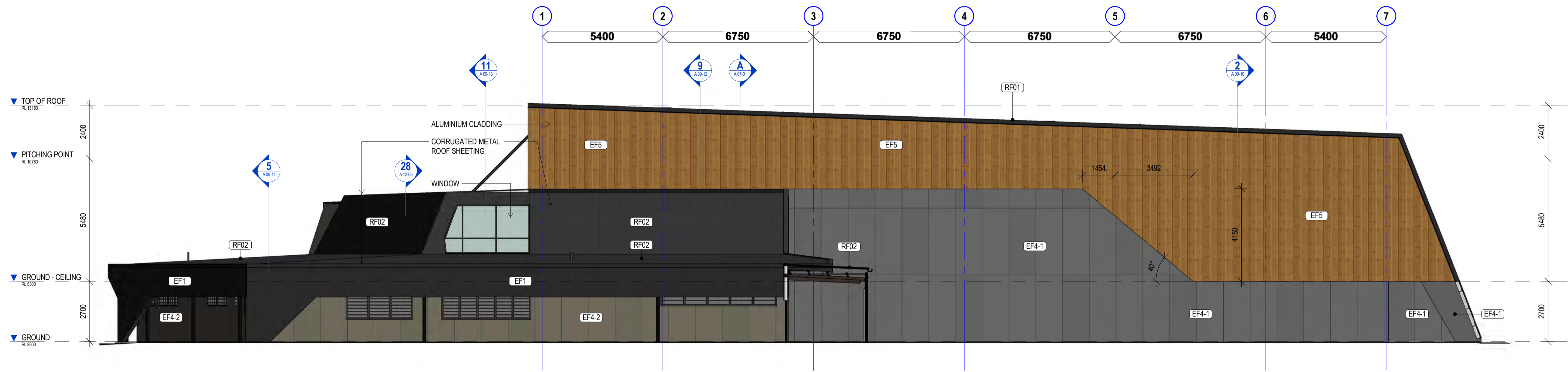
**DIMENSIONS**  
Use figured dimensions only. DO NOT SCALE. Check all dimensions on site prior to fabrication or setout.

0 1 2 3 4 5 m  
SCALE 1:100

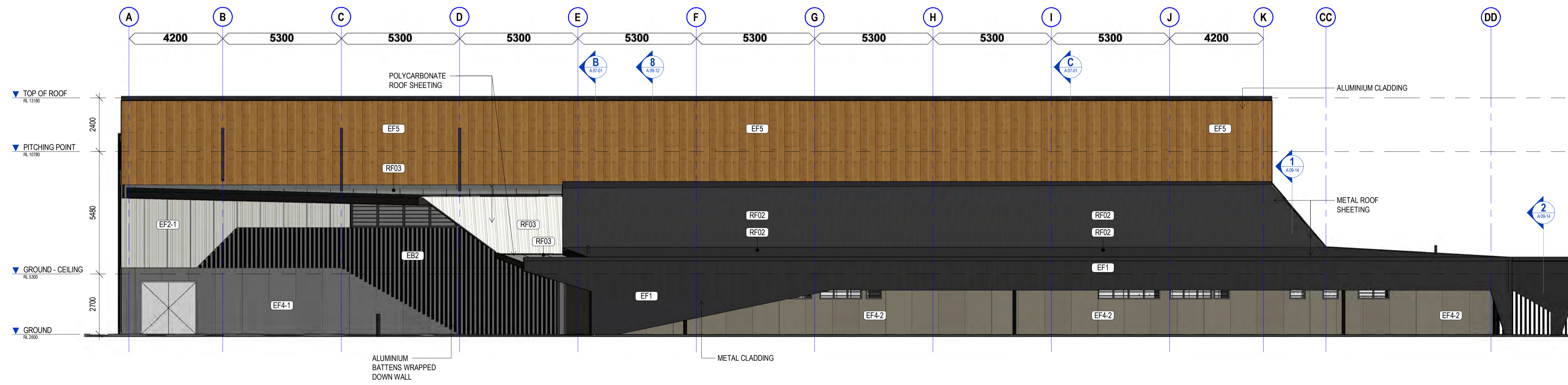
**tender issue**

**drawing authors**  
sheet setup date  
dwg authors M. SEVILLA  
project leader O. THESSMAN  
authorised for issue by project leader  
signature \_\_\_\_\_ date \_\_\_\_\_

amendments date	issue	description	checked by auth	proj ldr
10.11.17	1	DRAFT PRELIMINARY ISSUE	MS	OT
15.11.17	2	REVISED DRAFT PRELIM ISSUE	MS	OT
24.11.17	3	DA ISSUE	MS	OT
11.12.17	4	DA ISSUE	MS	OT
19.01.18	5	UPDATED DA ISSUE	MS	OT
23.03.18	6	REVISED DA ISSUE	CH	OT
06.04.18	7	PRELIM. TENDER ISSUE	CH	OT
23.04.18	8	PRE-TENDER ISSUE	CH	OT
22.06.18	9	TENDER ISSUE	CH	OT



**1 ELEVATION - SOUTH**  
SCALE 1:100



**2 ELEVATION - WEST**  
SCALE 1:100



www.pdt.com.au  
level 3, 100 mcclachlan street fortitude valley 4006 1+61 7 3232 1300  
po box 607 fortitude valley qld 4006 quality assurance ANZS ISO 9001

project details  
**BALLINA INDOOR SPORTS CENTRE**  
40 CHERRY STREET BALLINA NSW

sheet title  
**OVERALL BUILDING ELEVATIONS - SHEET 2**

issue date	scale @ A1	stage
22.06.18	1:100	SD
job no.	dwg no.	revision
8385	A 06-02	9

**GENERAL NOTES**

- ALL DRAWINGS ARE TO BE READ IN CONJUNCTION WITH THE GENERAL NOTES. **DWG. A 00-02**
- USE FIGURED DIMENSIONS ONLY. DO NOT SCALE FROM DRAWINGS. CHECK ALL DIMENSIONS ON SITE BEFORE SETOUT OR FABRICATION.
- THE CONTRACTOR MUST VERIFY AND CHECK ALL SITE CONDITIONS INCLUDING CEILING HEIGHTS AND DIMENSIONS BEFORE COMMENCING WORK ON SITE.