



BALLINA SHIRE COUNCIL

**ATTACHMENTS TO
COMMERCIAL SERVICES COMMITTEE
MEETING BUSINESS PAPER**

Tuesday 18 September 2018

Table of Contents

| | | |
|-----|---|----|
| 4.1 | Communications Tower - Russellton Industrial Estate - Licence | |
| | Attachment 1: Locality Plan - Part Lot 2 DP 1169153 Russellton Industrial Estate, Water Reservoir Site..... | 1 |
| | Attachment 2: NSW Telco Authority - Critical Communications Enhancement Program | 2 |
| 4.2 | 139 River Street, Ballina - Lease Variation | |
| | Attachment : 139 River Street, Ballina - Leasing Plan..... | 6 |
| 4.3 | 153 Kays Road, Wardell - Lease | |
| | Attachment : Ballina Turf Farm - Locality Plan | 7 |
| 4.4 | Former Tintenbar Council Chambers - Sublease of Area 1 | |
| | Attachment 1: Former Tintenbar Council Chambers - Locality Plan | 8 |
| | Attachment 2: Former Tintenbar Council Chambers - Leasing Plan..... | 9 |
| 4.5 | 54 North Creek Road, Ballina - Industrial Land Subdivision - Update | |
| | Attachment : 54 North Creek Road, Ballina - Proposed Lot Layout..... | 10 |
| 4.6 | Wollongbar Residential Estate - Stage 3 - Roadworks | |
| | Attachment 1: Wollongbar Residential Estate - Stage 3 - Concept Layout Plan | 11 |
| | Attachment 2: Wollongbar Residential Estate and Avalon Estate - NDC Combined Concept Plan)..... | 12 |
| | Attachment 3: Avalon Estate - Stage 5N - Site Plan..... | 13 |

DISCLAIMER ©NSW Spatial Services 2017. Although all care is taken in the preparation of plans within Council's business paper (both agendas and attachments), Ballina Shire Council accepts no responsibility for any misprints, error, omissions or inaccuracies. The information contained within each plan is for pictorial representation only and not to scale. Accurate measurements should be undertaken by survey.

4.1 **Communications Tower - Russellton Industrial Estate - Licence.DOC**



Ballina Shire Council. © NSW Spatial Services 2018. This map is illustrative and not to scale. 20 m

Ballina Shire Council
 40 Cherry Street
 BALLINA NSW 2478

 PO Box 450
 BALLINA NSW 2478

 1300 864 444
council@ballina.nsw.gov.au
www.ballina.nsw.gov.au

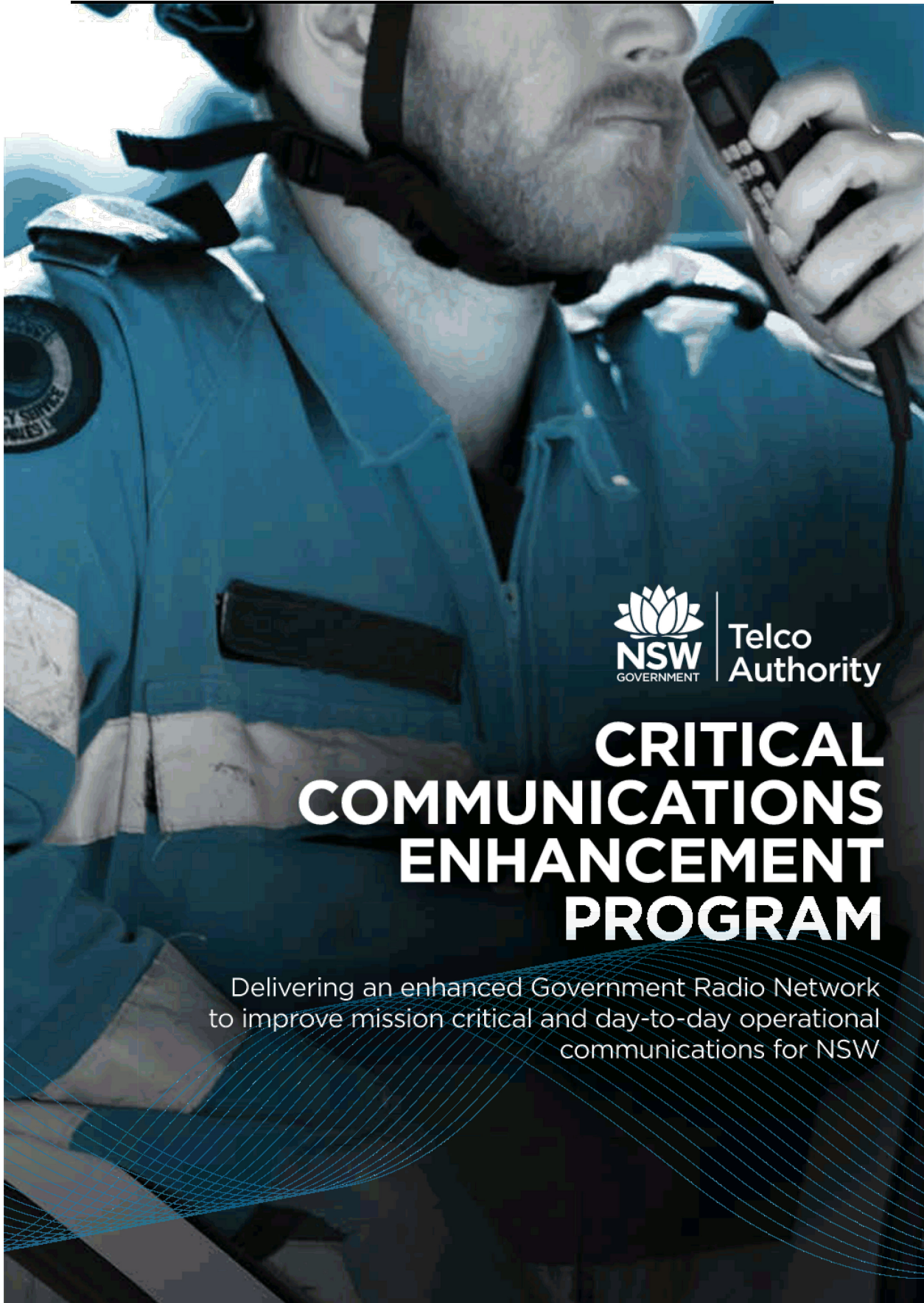


Locality Plan
Part Lot 2 DP 1169153
NSW Telco Authority

ballina shire council
 geographical information system

Projection: GDA94 / MGA zone 56
 Date: 30/08/2018

© Ballina Shire Council © NSW Spatial Services 2018
 While every care is taken to ensure the accuracy of this product, Ballina Shire Council and the Local / State / Federal Government departments and Non-Government organisations whom supply datasets, make no representations or warranties about its accuracy, reliability, completeness or suitability for any particular purpose and disclaims all responsibility and all liability (including without limitation, liability in negligence) for all expenses, losses, damages (including indirect or consequential damage) and costs which you might incur as a result of the product being inaccurate or incomplete in any way and for any reason.



CRITICAL COMMUNICATIONS ENHANCEMENT PROGRAM

Delivering an enhanced Government Radio Network
to improve mission critical and day-to-day operational
communications for NSW

CRITICAL COMMUNICATIONS ENHANCEMENT PROGRAM



The Critical Communications Enhancement Program (CCEP) is delivering an enhanced Government Radio Network (GRN) to improve emergency and day-to-day operational communications for a wide range of NSW Government agencies including law enforcement, public safety and essential services.

One of the first initiatives to be delivered under the NSW Government's Operational Communications Strategy, the CCEP will consolidate the large number of separate radio assets owned and operated by NSW Government agencies to enhance the NSW Telco Authority's existing GRN.

The CCEP will increase the level of shared radio coverage available to NSW Government agencies, and essential services from less than 35% to over 80% of the state*.

Emergency and day-to-day operational communications will also benefit from network capacity, availability and resilience designed to meet public safety standards for radio communications.

Importantly, the enhanced GRN will support network users to more easily share information (interoperability) and coordinate responses to critical incidents, such as road accidents, floods and fires.

The vision for the future of operational communications in NSW is one where seamless, robust communication is available to NSW Government agencies and essential services.

The CCEP is key to achieving this outcome and will see NSW Government agencies move from separate networks to a shared platform for emergency and day-to-day operational communications.

Moving to a common technology platform also paves the way for the adoption of new technologies such as public safety mobile broadband and other applications compatible with mobile broadband, as they develop.

*In-vehicle radio coverage modelled at delivered Audio Quality (DAQ) 3.4.

CRITICAL COMMUNICATIONS ENHANCEMENT PROGRAM

BENEFITS OF THE PROGRAM

The CCEP will deliver significant benefits to NSW Government agencies and essential services as well as the broader community. An enhanced GRN will ensure:

- **Greater accessibility to public safety standard radio communications** for frontline personnel and for day-to-day operations through increased coverage and network capacity, availability and resilience designed to meet mission critical standards.
- **More flexible incident responses and coordination** as network users can share information (interoperability) during large scale public events and incidents, improving service levels and outcomes for both frontline personnel and the NSW community. It also aligns NSW with other states and territories who have, or are in the process of investing in, a single, multi-agency shared network for mission critical communications.
- **A single common platform for emergency communications**, which will support existing voice communications between agency personnel while also preparing NSW for the deployment of next generation technologies, such as public safety mobile broadband and compatible applications.
- **More efficient management of resources** by reducing the duplication of infrastructure and taking advantage of the economic benefits realised through a single portfolio. Through the CCEP, the best existing sites will be retained and new sites constructed where required. Moving from over 2,600 separate sites to approximately 800 shared network sites, the CCEP will deliver long term cost savings to the taxpayer as surplus radio infrastructure is decommissioned.

The benefits of the CCEP will be felt in communities across NSW. Improved radio coverage will enable law enforcement, public safety and essential services to better deliver services to the community.



CRITICAL COMMUNICATIONS ENHANCEMENT PROGRAM

NSW TELCO AUTHORITY

NSW Telco Authority is a statutory authority within the NSW Department of Finance, Services and Innovation, controlled by the Managing Director in accordance with policies advised by the Board.

Telco Authority leads sector-wide reform and delivery of government operational communications to enable stakeholders to better respond to the NSW community. In this role, Telco Authority identifies, develops, delivers and procures operational communications services to meet the needs of its customers, in partnership with government agencies and industry. At the core of Telco Authority's service delivery is meeting the day-to-day and mission critical operational communications needs of government agencies and essential services.

This includes managing the NSW Government Radio Network (GRN), which provides radio communications for Emergency Service Organisations (ESOs) and other government agencies. Through its Critical Communications Enhancement Program (CCEP), Telco Authority is working in collaboration with stakeholders and industry to deliver an enhanced GRN.

Telco Authority has responsibility for managing all spectrum assets for NSW Government agencies, advocating at state and national level to meet spectrum needs, including the increasing requirement for data in the field. Support for telecommunications in emergencies is coordinated by Telco Authority's Telecommunications Services Functional Area (TELCOFAC).

www.telco.nsw.gov.au



**CRITICAL COMMUNICATIONS
ENHANCEMENT PROGRAM**

For more information:
Email: CCEPinfo@finance.nsw.gov.au
Phone: 1800 794 862
www.telco.nsw.gov.au/ccep/home

Front cover image courtesy of NSW State Emergency Service.
 Inside images courtesy of Fire & Rescue NSW & NSW State Emergency Service.

CCEP DELIVERY

Over 2016/17, the CCEP has been undertaking three key initiatives to support the delivery of an enhanced GRN including:



Pilot

Undertaken in the North-West region of the state, the pilot will significantly improve shared and interoperable network coverage in the region particularly around the major towns of Lightning Ridge, Collarenebri, Walgett, Carinda, Coonamble, Nyngan and Warren.



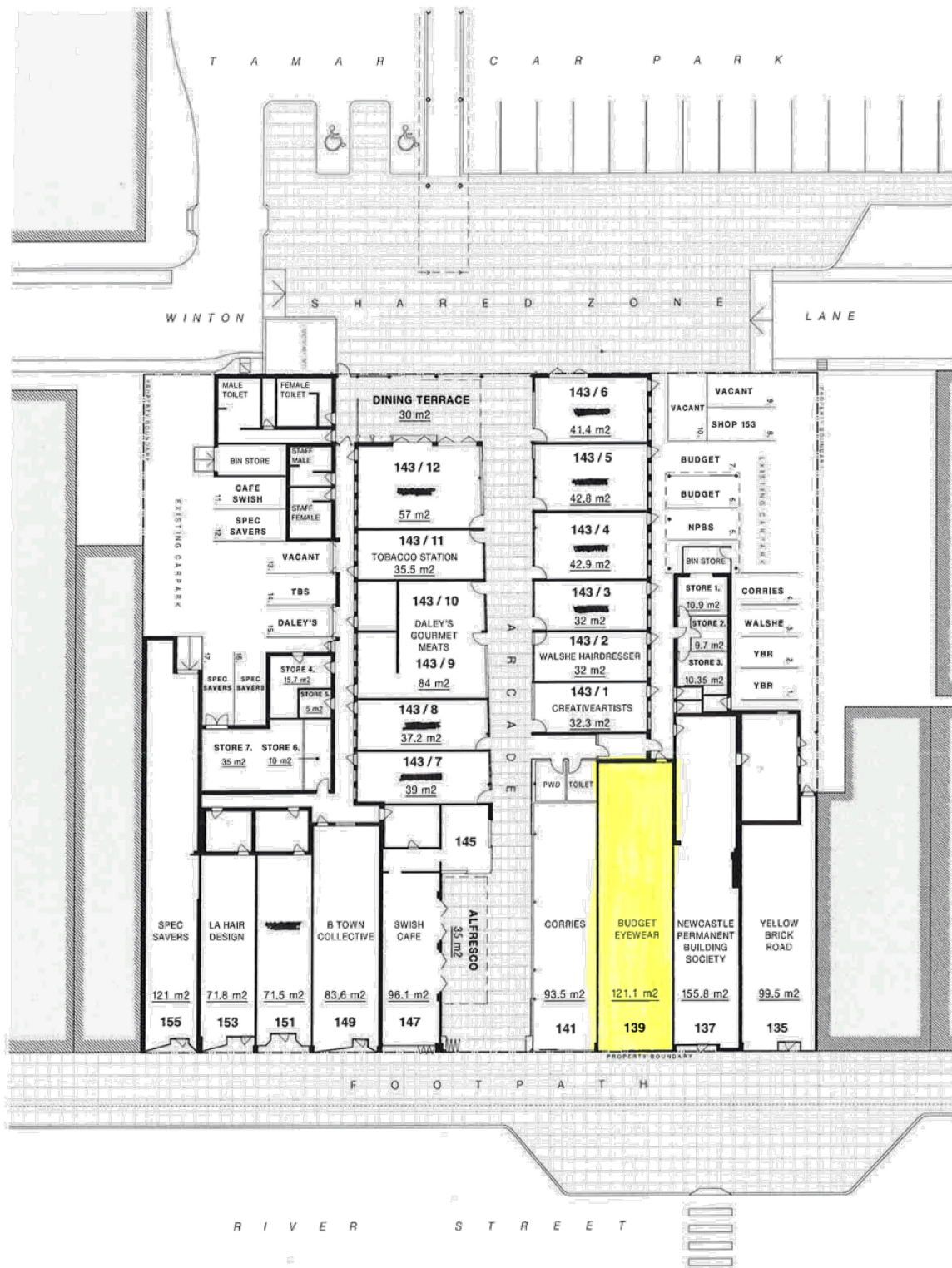
State-wide audit

Covering over 2,600 radio sites and almost 27,000 radio assets owned and operated by a range of NSW Government agencies, the state-wide audit has provided valuable intelligence on the state's combined radio network assets. The audit findings are progressively informing the design of the enhanced GRN.



State-wide preliminary design for the enhanced GRN

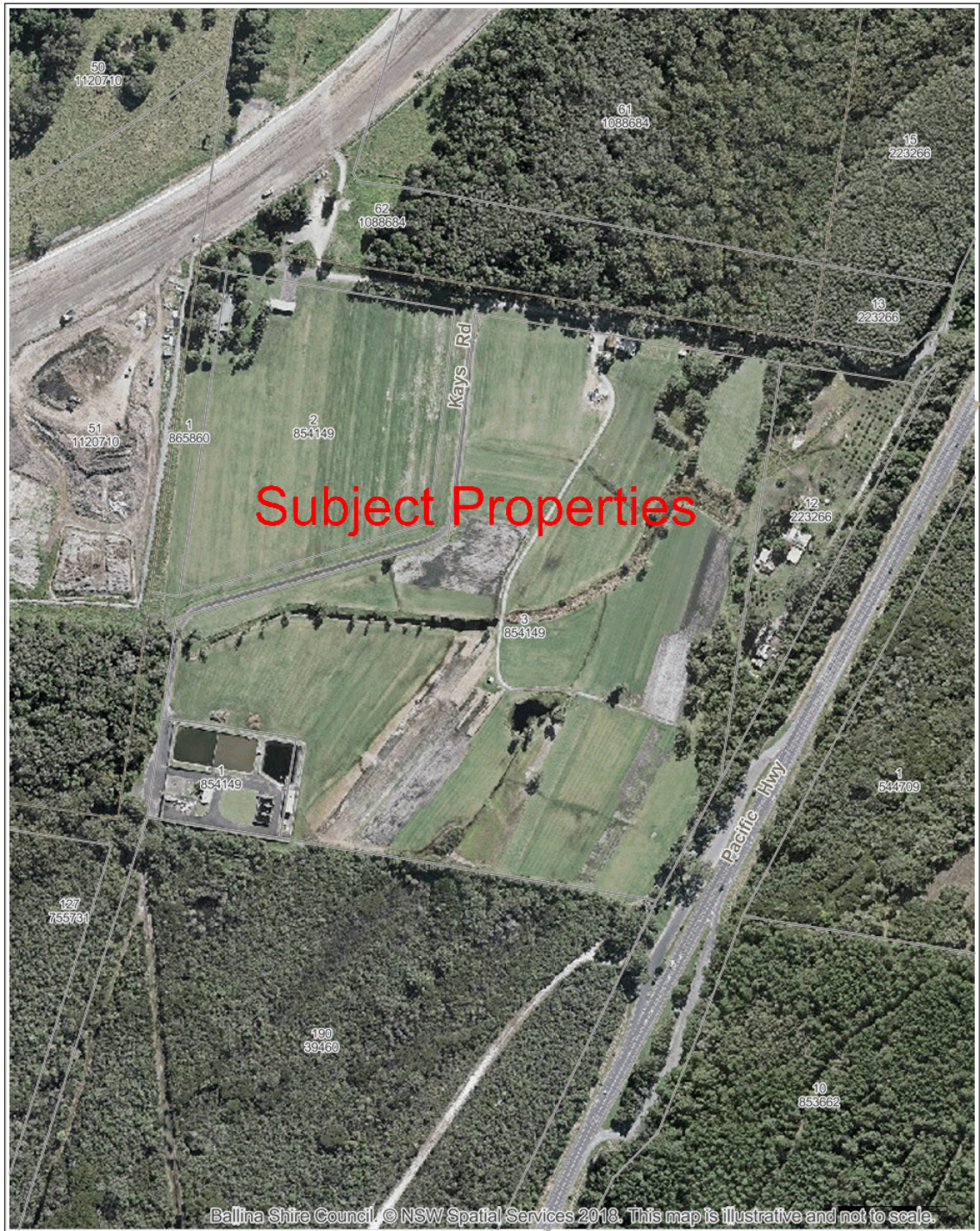
The preliminary design is a highly collaborative process between law enforcement and public safety agencies, private partners and the Telco Authority, enabling the CCEP to develop a network design for the enhanced GRN which will deliver greater radio coverage for NSW.



WIGMORE ARCADE - COMPLEX LEASING PLAN

NOTE: NOT TO SCALE - AREAS ARE APPROXIMATE ONLY





Ballina Shire Council
 40 Cherry Street
 BALLINA NSW 2478

 PO Box 450
 BALLINA NSW 2478

 1300 864 444
 council@ballina.nsw.gov.au
 www.ballina.nsw.gov.au



Locality Plan
Lease Renewal-R MacDonald
Ballina Turf Farm - Residence
Lot 2 & 3 DP 854149
Lot 1 DP 865860

ballina shire council
 geographical information system

Projection: GDA94 / MGA zone 56
 Date: 24/08/2018

© Ballina Shire Council © NSW Spatial Services 2018
 While every care is taken to ensure the accuracy of this product, Ballina Shire Council and the Local / State / Federal Government departments and Non-Government organisations whom supply datasets, make no representations or warranties about its accuracy, reliability, completeness or suitability for any particular purpose and disclaims all responsibility and all liability (including without limitation, liability in negligence) for all expenses, losses, damages (including indirect or consequential damage) and costs which you might incur as a result of the product being inaccurate or incomplete in any way and for any reason.

4.4 **Former Tintenbar Council Chambers - Sublease of Area 1.DOC**



Ballina Shire Council
 40 Cherry Street
 BALLINA NSW 2478
 PO Box 450
 BALLINA NSW 2478
 1300 864 444
 council@ballina.nsw.gov.au
 www.ballina.nsw.gov.au



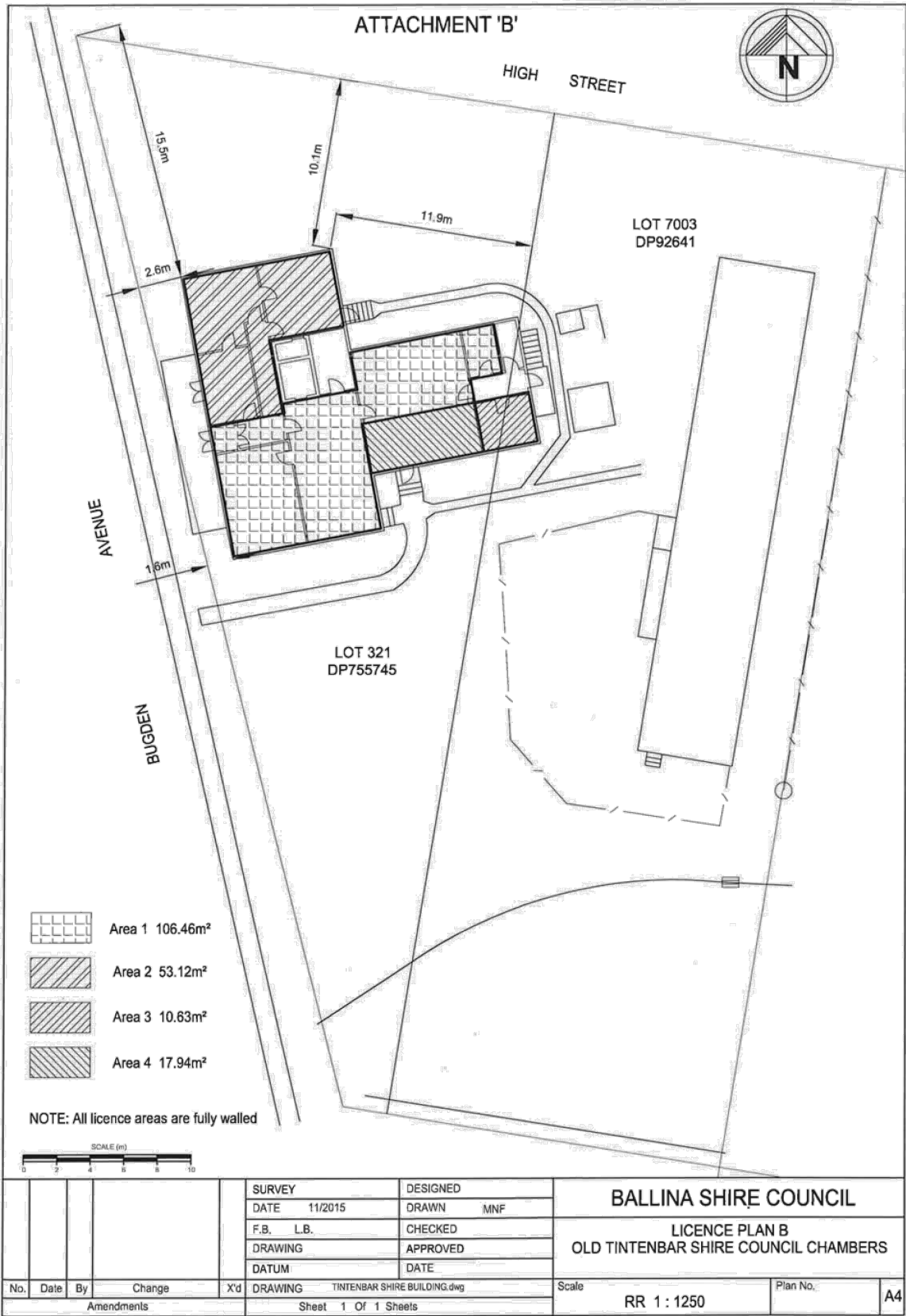
**Locality Plan
 Fleming Area 1
 Tintenbar Council Chambers**

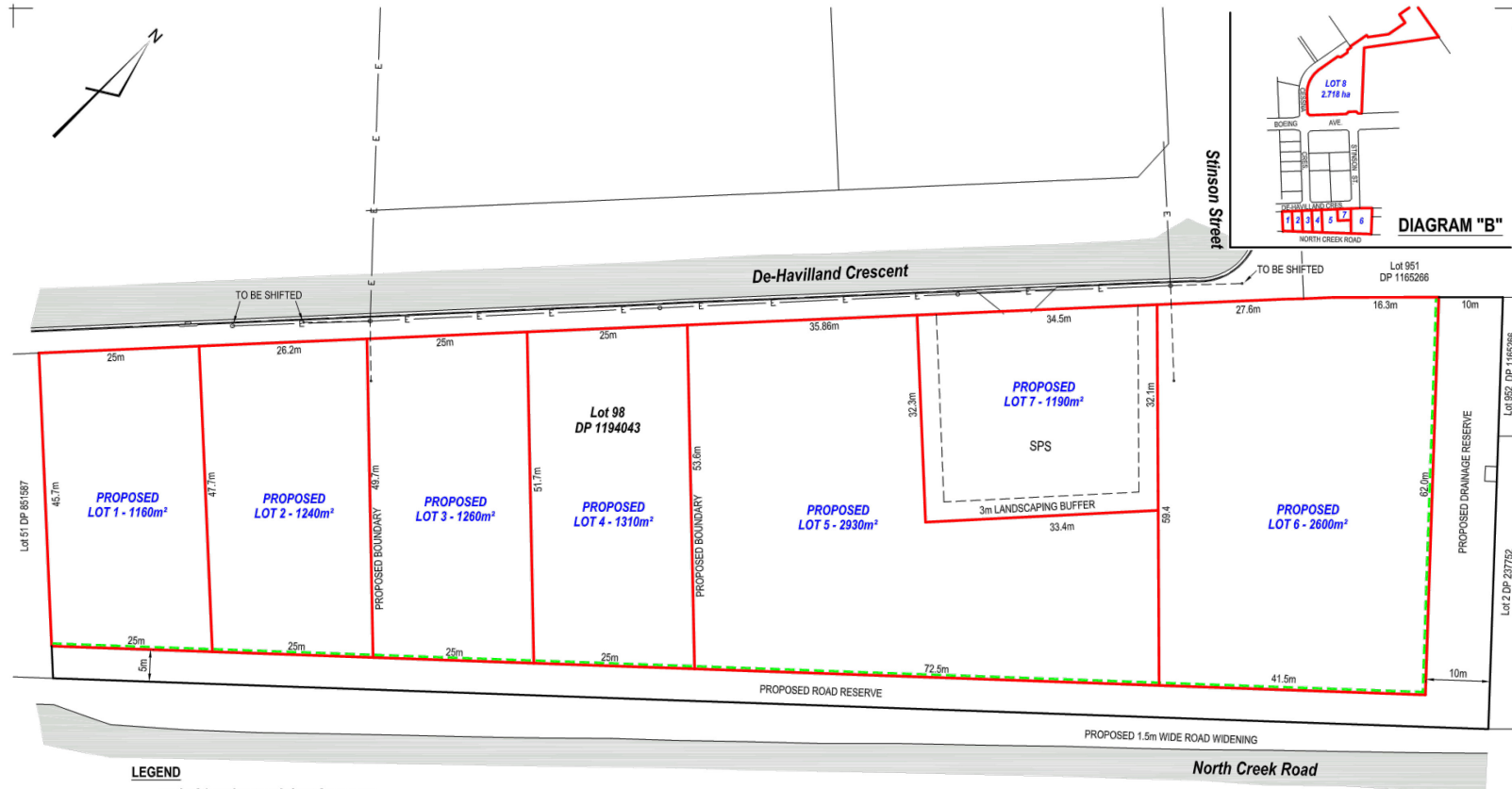
ballina shire council
 geographical information system

Projection: GDA94 / MGA zone 56
 Date: 24/08/2018

© Ballina Shire Council © NSW Spatial Services 2018
 While every care is taken to ensure the accuracy of this product, Ballina Shire Council and the Local / State / Federal Government departments and Non-Government organisations whose supply datasets, make no representations or warranties about its accuracy, reliability, completeness or suitability for any particular purpose and disclaims all responsibility and all liability (including without limitation, liability in negligence) for all expenses, losses, damages (including indirect or consequential damage) and costs which you might incur as a result of the product being inaccurate or incomplete in any way and for any reason.

4.4 **Former Tintenbar Council Chambers - Sublease of Area 1.DOC**





LEGEND

- PROPOSED SUBDIVISION BOUNDARY
- - - PROPOSED NOISE WALL (TBC)

* PROPOSED ROAD WIDENING & DRAINAGE RESERVE AREA HAS BEEN REMOVED FROM LOT AREAS.
 ** LOT F INCLUDES RESIDUE ALLOTMENT ON THE CORNER OF BOERING AVE AND CESSNA CRESCENT.

CivilTech
Consulting Engineers

• Subdivision Design • Civil Engineering • Town Planning • Project Management

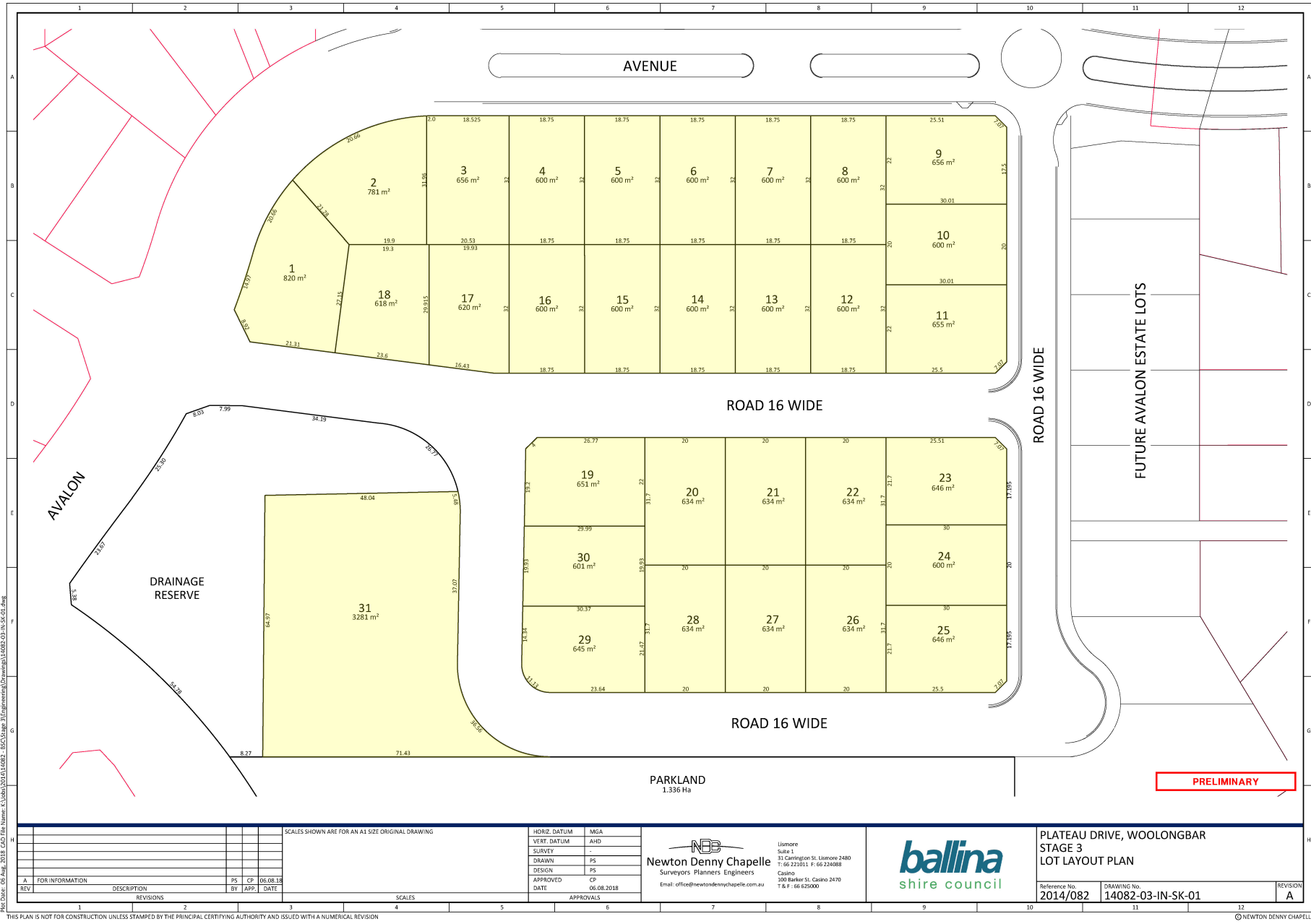
CivilTech Consulting Engineers
 Ph. (02) 6624 5580
 PO BOX 1020
 Lismore NSW 2480
 www.civiltch.net.au

PROPOSED SALES PLAN
FOR SUBDIVISION OF LOT 98 DP 1194043
54 NORTH CREEK ROAD
for BALLINA SHIRE COUNCIL

FIGURE 3

| | |
|-----------|----------------|
| SCALE: | 1 : 1500 at A3 |
| LGA: | Ballina |
| LOCALITY: | Ballina |
| DESIGNED: | - |
| DRAWN: | WF |
| APPROVED: | AZ |
| DATE: | 26.10.2016 |
| COGO: | 15005 (CAS) |
| Dwg. No. | 14144-SK11D |

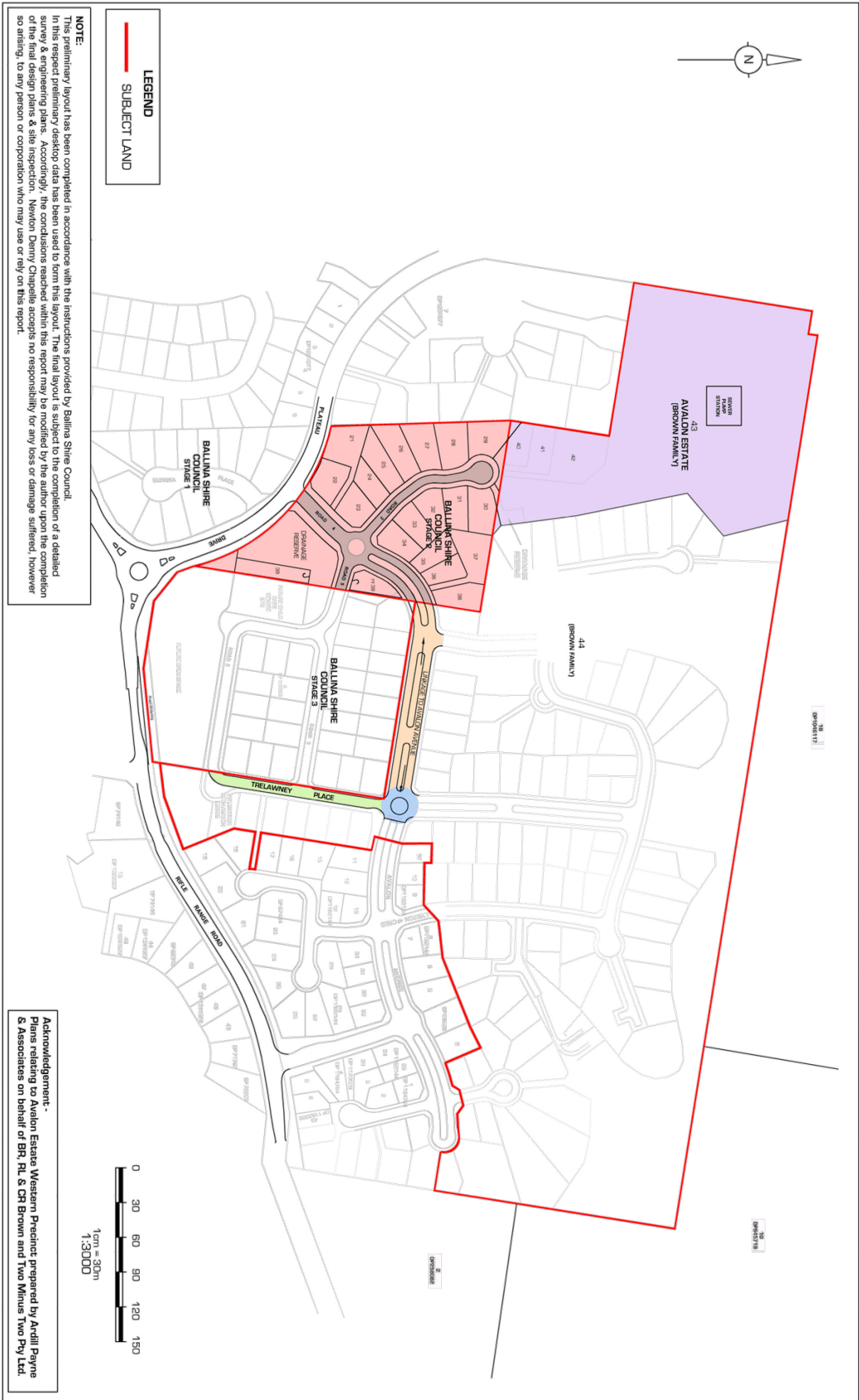
4.6 **Wollongbar Residential Estate - Stage 3 - Roadworks.DOC**



File Name: C:\Users\DAVID\Documents\Drawings\14082-03-IN-SK-01.dwg
 Plot Date: 06 Aug 2018 04:51
 Scale: 1:1000
 Drawing No: 14082-03-IN-SK-01

| | | | | | | | | |
|--|--|-------------------------------------|--|---|--|--------------------------|---|----------------------------------|
| SCALES SHOWN ARE FOR AN A1 SIZE ORIGINAL DRAWING | | HORIZ. DATUM MGA VERT. DATUM AHD | | Newton Denny Chapelle Surveyors Planners Engineers Email: office@newtondennychapelle.com.au | Lismore 51 Carrington St. Lismore 2480 T: 66 221011 F: 66 224088 Casino 100 Barker St. Casino 2470 T & F: 66 625000 | ballina shire council | PLATEAU DRIVE, WOOLONGBAR STAGE 3 LOT LAYOUT PLAN | |
| APPROVED DATE 06.08.2018 | | APPROVED DATE 06.08.2018 | | | | | Reference No: 2014/082 | Drawing No: 14082-03-IN-SK-01 |

THIS PLAN IS NOT FOR CONSTRUCTION UNLESS STAMPED BY THE PRINCIPAL CERTIFYING AUTHORITY AND ISSUED WITH A NUMERICAL REVISION

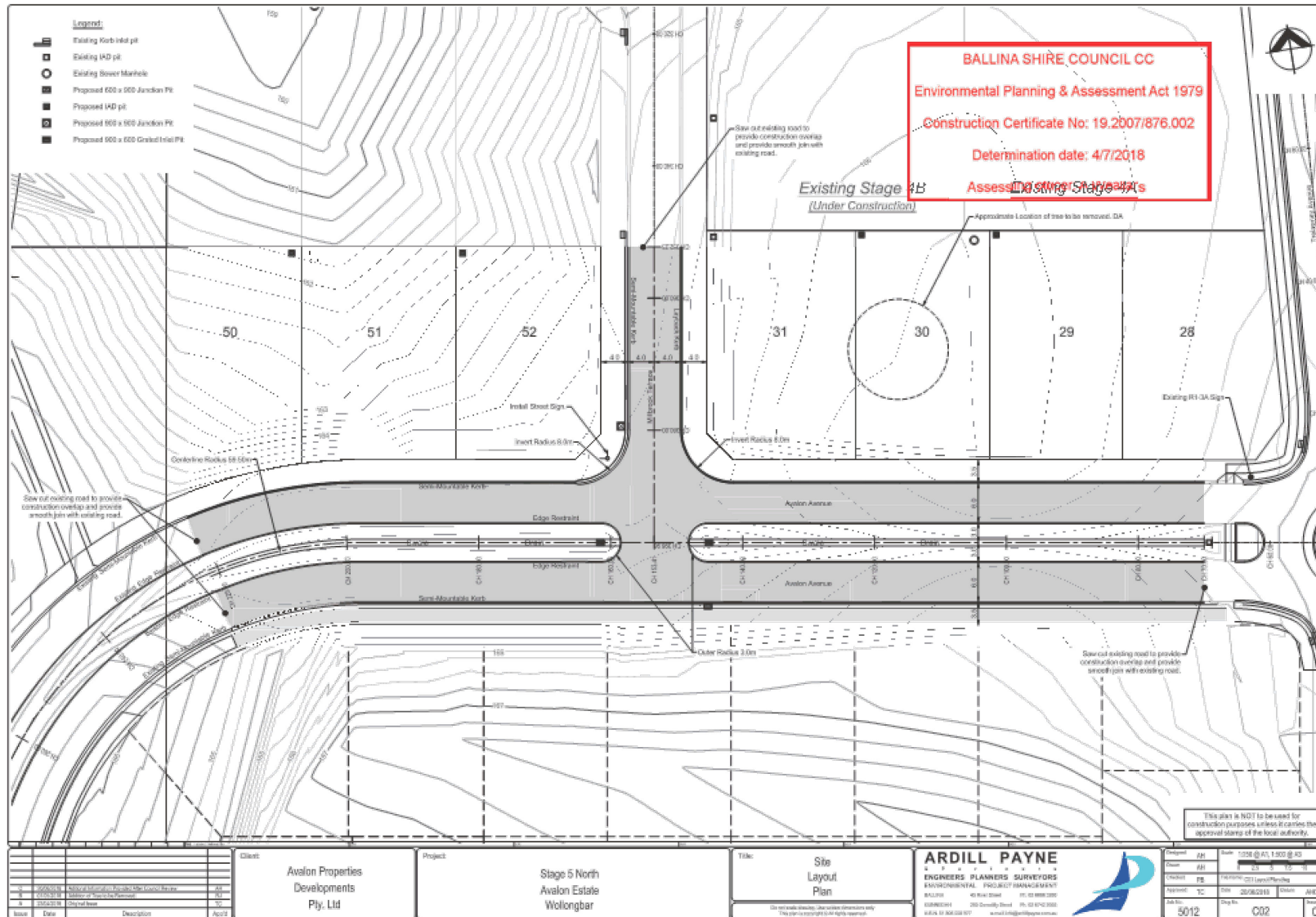


| REV / DATE | AMENDMENT |
|------------|-----------|
| A | 31/03/15 |
| B | 30/04/15 |
| C | 30/05/15 |
| E | |

SOURCE PLAN: n/a
 E:\youth\2015\40327 - land\planning\planning plans\ndc plans\lead files\140327 - base master plan summary nov 2015\dwg - plan 3 - master plan

Newton Denny Chapelle
 Surveyors Planners Engineers
 Email: office@newdennychapelle.com.au
 Phone: 02550 100 Baker St. Darro 2470 Ph: 6682 5000

4.6 **Wollongbar Residential Estate - Stage 3 - Roadworks.DOC**



| Issue | Date | Description | App'd |
|-------|------------|---------------|-------|
| 1 | 20/08/2018 | Initial Issue | |
| 2 | 20/08/2018 | Revised | |
| 3 | 20/08/2018 | Revised | |
| 4 | 20/08/2018 | Revised | |

Client: Avalon Properties Developments Pty, Ltd

Project: Stage 5 North Avalon Estate Wollongbar

Title: Site Layout Plan

ARDILL PAYNE
 ENGINEERS PLANNERS SURVEYORS
 ENVIRONMENTAL PROJECT MANAGEMENT
 BALLINA 40 Bial Street Ph: 02 8968 3300
 GARRIBERRI 200 Derriford Road Ph: 02 8742 3500
 WEAH 10 888 28 9177 www.ardillpayne.com.au

| | |
|--------------|-------------------------------|
| Drawn: JH | Scale: 1:500 @ A1, 1:200 @ A0 |
| Checked: FE | Date: 20/08/2018 |
| Approved: TC | Drawn By: JH |
| Job No: 5012 | Drawn: C02 |
| | Scale: C |

