



lennoxVILLAGEvision

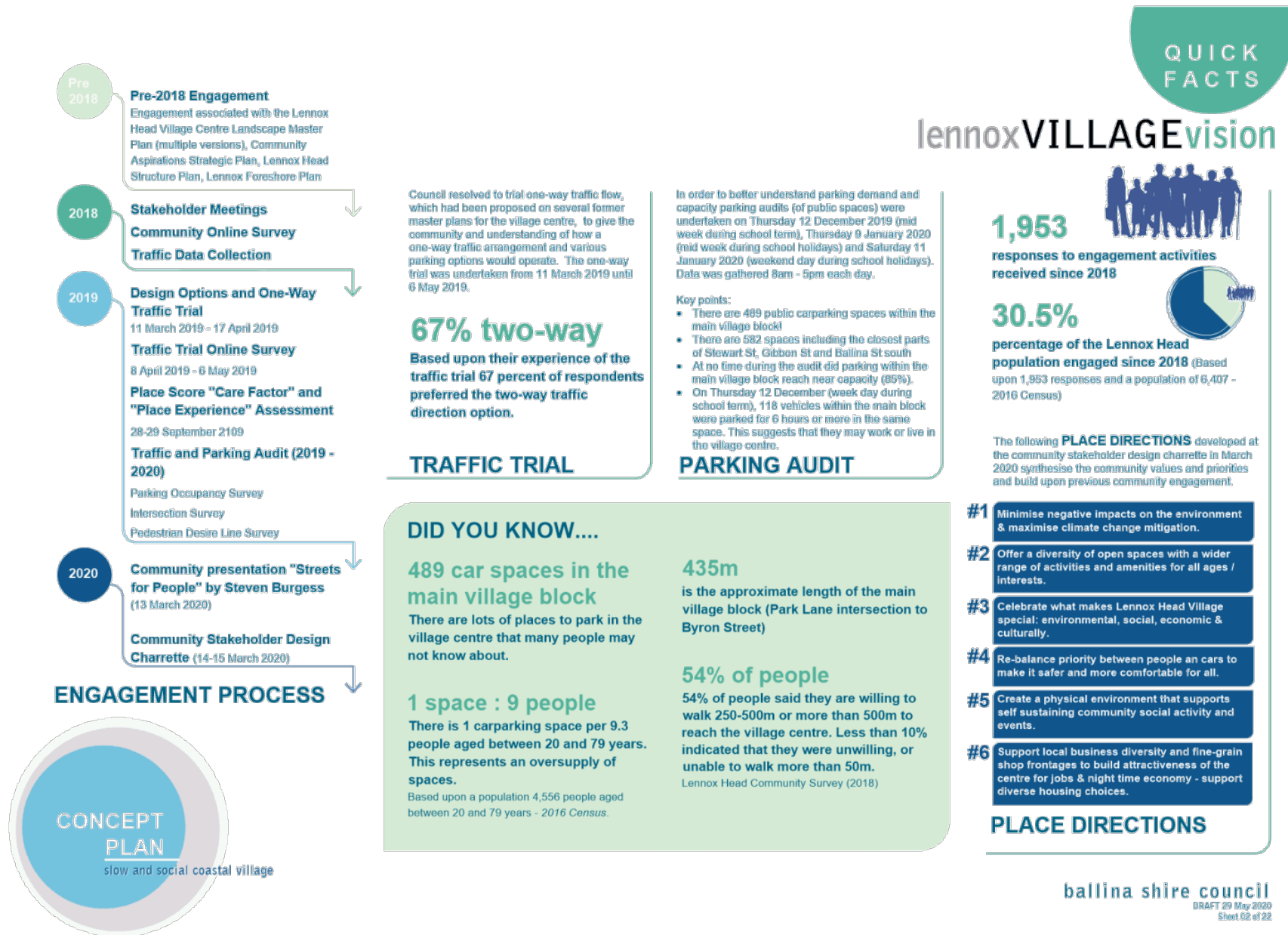
This is a DRAFT CONCEPT PLAN prepared by Ballina Shire Council which further illustrates and resolves concepts and outcomes of community engagement undertaken since 2018 and more recently a community / stakeholder design charrette process undertaken in March 2020. This document should be read in conjunction with the Lennox Village Vision Design Charrette Outcomes Report (March 2020) prepared by Place Score. The concept is subject to detailed design and planning approvals.

Issue date 29 May 2020

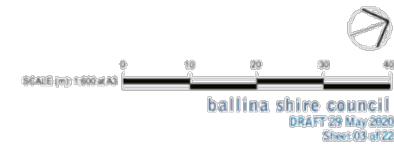
CONCEPT
PLAN
slow and social coastal village

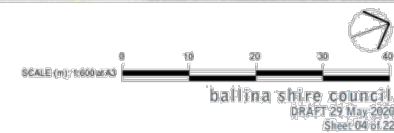
DRAFT

ballina shire council

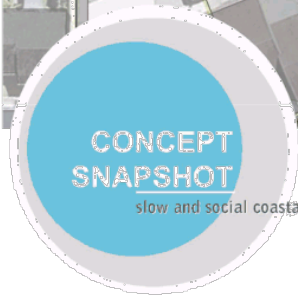


8.5 Lennox Village Vision - Draft Concept Plan





8.5 Lennox Village Vision - Draft Concept Plan



SCALE (m): 1:600 at A3

ballina shire council
DRAFT 29 May 2020
Sheet 05 of 22



ROSS PARK: THE PLACE WE WANT

THE CONNECTED AND COMMUNAL HEART OF LENNOX – A PLACE FOR NATURE PLAY FOR ALL AGES

THE CONNECTED AND COMMUNAL HEART OF LENNOX...

- 1 A flush surface across the roadway allows for equitable pedestrian movement across Ballina Street at one of the key observed desire lines.
- 2 Wider footpath pavements allow space for shade trees and furniture.
- 3 Undergrounding electricity allows trees of native species to provide shade to the street and park.
- 4 A variety of seating options and designs support individuals and groups of varying capabilities. Furniture will be made predominantly from local, recycled and/or natural materials.
- 5 A 1.5m footpath widening to the southern side of Rayner Lane and a "shared zone" improves safety for pedestrians and may provide opportunities for additional outdoor dining.
- 6 The footpaths and popouts provide additional opportunities for outdoor dining and street furniture on Ballina Street and Rayner Lane.
- 7 Accessible parking spaces are retained and an additional space provided on Ballina Street (north bound).
- 8 Ross Park supports cycling by providing bicycle parking (10 spaces) and a maintenance station.
- 9 A central axis pathway connects the street to the park and beachfront, retaining a visual connection to the ocean.
- 10 Ross Park provides facilities which support passive recreation (e.g. information/heritage sign, toilet, picnic shelters, curvilinear seating pods, open grass area, shade, individual seats, sculpture, spaces for interpretative art, solar park and shelter lighting).

A PLACE FOR NATURE PLAY...

- 11 Ross Park includes an all-ability playspace inspired by the local features of the landscape including the coastal vegetation, lake ecology and marine park. Key features of the playspace include a toilet, covered picnic areas, all-ability carousel, small timber play fort with slide, nature play elements (such as timber balancing beams, timber and stone hopping obstacles, rope balancing, timber overhead ladder, large fallen hardwood tree frame for exploring and climbing), interactive sculpture, shade trees and seating.
- 12 The playspace educates about the marine park and the local turtle population by integrating sculpture of hatching turtle eggs which are suitable for interactive play. A graphic of the hatched turtles making their way to the water is patterned into the axial pathway.

FOR ALL AGES... (BEACHFRONT CHILL-OUT ZONE)

- 13 A recycled hardwood timber deck (at-grade) at the main observation area accentuates the park edge and connects to the beach access ramp.
- 14 There is a place for people to lean on (leaning bench) to look at the surf, headland and ocean.
- 15 Parts of the park have an informal edge to the beach where the grass meets the coastal vegetation and rocks.
- 16 Access to the beach is retained in the current location.





ROSS PARK: THE PLACE WE WANT

THE CONNECTED AND COMMUNAL
HEART OF LENNOX – A PLACE FOR
NATURE PLAY FOR ALL AGES





ROSS PARK: THE PLACE WE WANT

THE CONNECTED AND COMMUNAL HEART OF LENNOX – A PLACE FOR NATURE PLAY FOR ALL AGES





LENNOX PARK: THE PLACE WE WANT

PREDOMINANTLY PASSIVE GREEN SPACE FOR DAY TO DAY RECREATION AND LOW IMPACT COMMUNITY EVENTS

PREDOMINANTLY A PASSIVE GREEN SPACE...

- 1 At the street interface, moving the bustop southward allows for a flush pedestrian threshold and equitable and safer movement across Ballina Street opposite a major interblock pedestrian connection.
- 2 De-cluttering the bus stop area by rationalising bins, structures, signage, seating and infrastructure provides improved visual amenity.
- 3 New amenities including toilets, change area and power supply provide for the day to day needs of the community and bus users.
- 4 A new and open bus shelter and seating supports bus users.
- 5 Removal of the existing shelter opens up the park and provides improved views to the water from the street.
- 6 New footpaths provide improved connectivity from the bus stop and the road crossing point to the existing beach access.
- 7 Native vegetation is retained and new plantings provide shade and wind protection and planting of high branching feature shade trees accentuate the park access.
- 8 There is an informal edge where the grass meets the rocks and the beachfront. Access to the beachfront is provided in the current location and the outdoor shower is retained.
- 9 The passive open space areas provide opportunities for incorporation of public art and future interpretative signage developed in consultation with the community.

FOR DAY TO DAY RECREATION ...

- 10 Curvilinear seating and picnic pods are located throughout the park in positions which offer opportunities to shelter from a variety of wind directions.
- 11 A double picnic shelter with table settings provide an outlook to the ocean (slatted screens can be added for wind protection if required). Additional facilities can be added in future stages as needed to match demand.
- 12 New seating along the beachfront offers a variety of styles to suit a diversity of users.

AND LOW IMPACT COMMUNITY EVENTS...

- 13 The park will remain predominately a passive open space which can be retrofitted with event infrastructure as required to cater for approved annual events and festivals. Electrical connection points at key locations support event activities.



GREEN GATEWAY...

- 1 Raised thresholds with decorative paving and defined pedestrian crossing points assist with visual identification of the southern gateway into the village, slow traffic and provide safer, more equitable pedestrian movement across Ballina Street.
- 2 Pop-outs at street corners provide space for tree and garden plantings to provide shade and greening of the gateways and street.
- 3 Incorporation of new low-key pathways where adjoining land uses are predominantly a residential scale provide opportunities for grass verges, tree and garden planting. Narrow the pathway to retain the fig tree.

INTO CENTRAL PEDESTRIAN-ORIENTATED...

- 4 Full width footpath pavements with consistent grades provide a safe pedestrian surface and opportunities for new street furniture and tree planting.
- 5 Changes to the paving type (patterning or artwork) highlight interblock pedestrian connections and provide opportunities for integration of "community artwork bricks".
- 6 A pedestrian priority crossing point slows traffic and provides safe movement across Ballina Street opposite a major interblock pedestrian connection. Pop-outs at these locations provide space for street furniture to encourage people to gather and stay.

COMMUNITY SHOPPING & SOCIAL ZONE

- 7 A "story-line", a place for the community to write about local people, cultures, places or systems, is incorporated into the paving at large recessed building frontages as a way to connect existing building frontages as a way to connect existing pavements and new pavements in an interesting and creative way.
- 8 Pop-outs provide space for shade trees, garden plantings, furniture (formal and informal), artwork and decorative paving - places to encourage people to stay longer.
- 9 "Grateful Pillars" (like the 'wishing tree')

BALLINA STREET: THE PLACE WE WANT

**GREEN GATEWAY INTO
CENTRAL PEDESTRIAN-ORIENTATED
COMMUNITY SHOPPING & SOCIAL
ZONE**



GREEN GATEWAY...

10 Incorporation of new low-key pathways where adjoining land uses are predominantly a residential scale provide opportunities for grass verges, trees and garden planting.

INTO CENTRAL PEDESTRIAN-ORIENTATED...

- 11 At the heart of the main street and village centre, wider footpaths and a flush surface across the roadway slows traffic and allows for safe and equitable pedestrian movement across Ballina Street.
- 12 A raised threshold provides a level surface and equitable access across the street at one of the key observed desire lines.

13 Wider footpath areas provide spaces for people to stay, gather, sit, eat and socialise in a shaded and visually pleasing setting with visual connections to the park and beach. There is a variety of seating options and designs to support individuals and groups of varying capabilities. Furniture will be made predominantly from local, recycled and/or natural materials.

14 Changes to the paving type (patterning or artwork) highlight interblock pedestrian connections and provide opportunities for integration of "community art bricks".

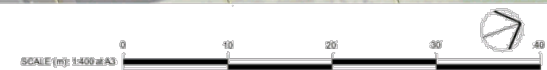
COMMUNITY SHOPPING & SOCIAL ZONE

16 A "story-line", a place for the community to write about local people, cultures, places or systems, is incorporated into the paving at large recessed building frontages as a way to connect existing pavements and new pavements in an interesting and creative way.

17 Pop-outs provide space for shade trees, garden plantings, furniture (formal and informal), artwork and decorative paving - places to encourage people to stay longer.

BALLINA STREET: THE PLACE WE WANT

GREEN GATEWAY INTO CENTRAL PEDESTRIAN-ORIENTATED COMMUNITY SHOPPING & SOCIAL ZONE



ballina shire council.
DRAFT 29 May 2020
Sheet 11 of 22

GREEN GATEWAY...

- 17 Raised thresholds with decorative paving and defined pedestrian crossing points assist with visual identification of the northern gateway into the village, slow traffic and provide safer, more equitable pedestrian movement across Ballina Street and Byron Street.
- 18 Incorporation of new low-key pathways where adjoining land uses are predominantly a residential scale provide opportunities for grass verges, trees and garden planting.
- 19 Undergrounding of electricity on Ballina Street allows for street tree planting and improved street amenity.

INTO CENTRAL PEDESTRIAN-ORIENTATED...

- 20 Changes to the paving type (patterning or artwork) highlight interblock pedestrian connections and provide opportunities for integration of "community artwork bricks".
- 21 Moving the bustop slightly southward allows for a flush pedestrian threshold to slow traffic and provide equitable and safer movement across Ballina Street opposite a major interblock pedestrian connection.
- 22 Future footpath (location to be determined)
- 23 A future raised threshold south of Lennox Street slows traffic towards the gateway and provides a location for the Coastal Shared Pathway to cross.

COMMUNITY SHOPPING & SOCIAL ZONE

- 24 Pop-outs provide space for shade trees, garden plantings, furniture (formal and informal), artwork and decorative paving - places to encourage people to stay longer.
- 25 Parallel car parking provides visual consistency along the street

BALLINA STREET: THE PLACE WE WANT

**GREEN GATEWAY INTO
CENTRAL PEDESTRIAN-ORIENTATED
COMMUNITY SHOPPING & SOCIAL
ZONE**



ballina shire council
DRAFT 29 May 2020
Sheet 12 of 22



CONCEPT PLAN
slow and social coastal village

BALLINA STREET: THE PLACE WE WANT

**GREEN GATEWAY INTO
CENTRAL PEDESTRIAN-ORIENTED
COMMUNITY SHOPPING & SOCIAL
ZONE**



PARK LANE: THE PLACE WE WANT

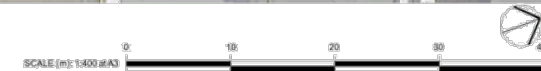
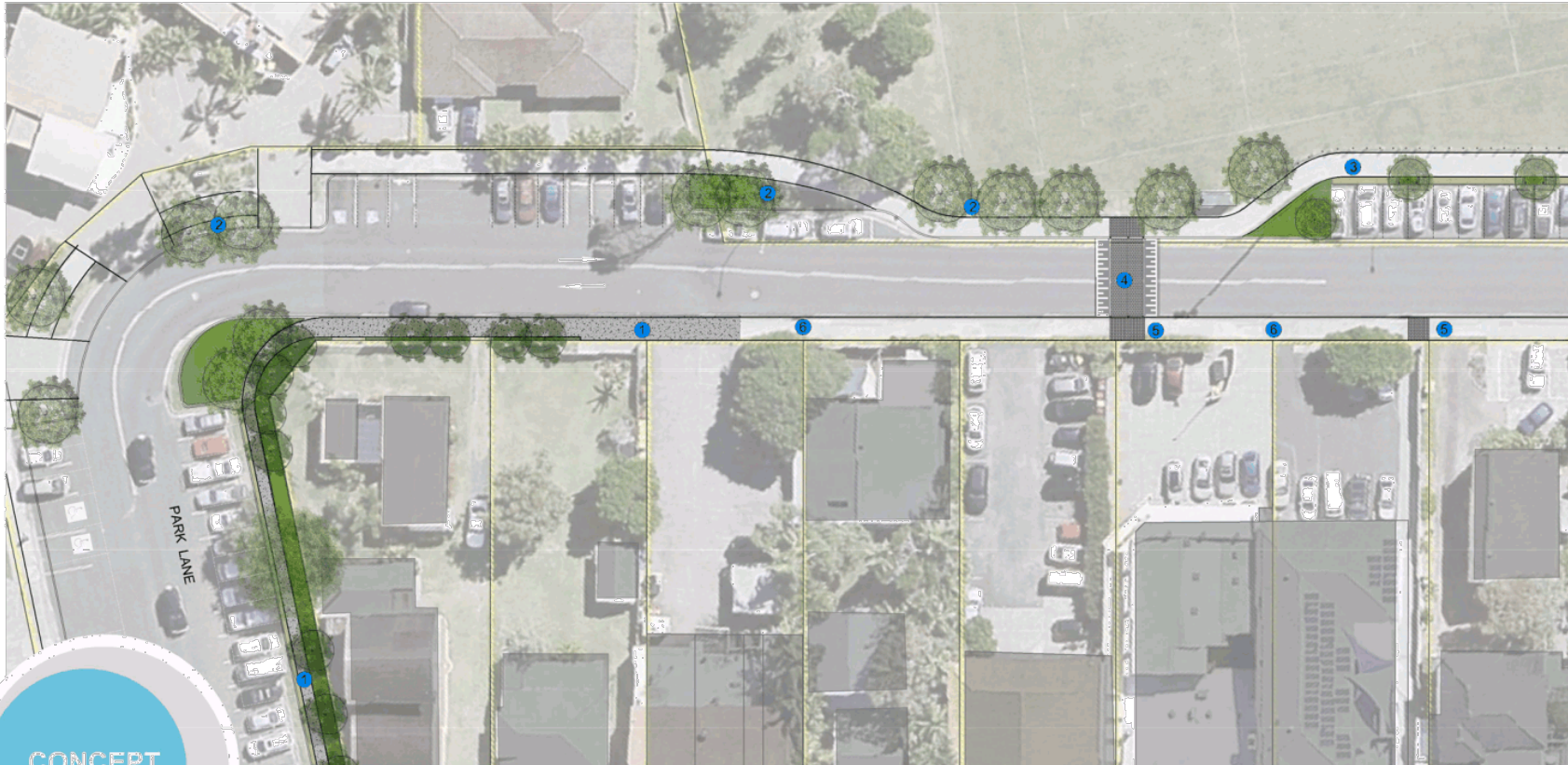
A SLOW SIDE PATH - NOT A FAST SHORT CUT

A SLOW SIDE PATH...

- 1 The Park Lane footpath connection is completed providing users with the ability to walk on a consistent pathway surface around the whole block.
- 2 Utilising existing grass areas for tree planting and gardens provides needed visual greening and shade to the street, footpath and recreation areas.
- 3 The pathway on the western side of Park Lane could form part of the future extension to the Coastal Shared Pathway. This concept accommodates this opportunity.

NOT A FAST SHORT CUT

- 4 Raised thresholds, slow traffic and improve pedestrian safety.
- 5 Decorative paving treatments to the existing Park Lane block footpath provide visual indicators of interblock connection points.
- 6 Encourage property owners to "activate" the Park Lane frontages (e.g. for selling second hand stock, 'pop up' sales, funky 'locals' back of house dining space, etc)



ballina shire council
 ©RAFT 29 May 2020
 Sheet 14 of 22

A SLOW SIDE PATH...

- 7 Utilising existing grass areas for tree planting and gardens provides needed visual greening and shade to the street, footpath and recreation areas.
- 8 The pathway on the western side of Park Lane could form part of the future extension to the Coastal Shared Pathway. This concept accommodates this opportunity.
- 9 Additional tree planting to the edge of Williams Reserve (outside the active field zones) provide shade.

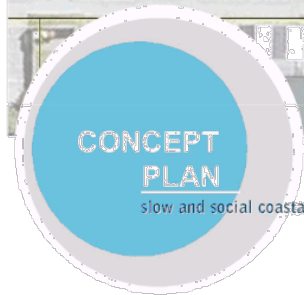
NOT A FAST SHORT CUT

- 10 Removal of carparking at the road bend and opposite the skate park improves sight lines and provides opportunities for tree planting and ground plane planting.
- 11 A reduced speed zone (40km/hr) and raised thresholds slow traffic and improve pedestrian safety at key pedestrian walking desirelines.
- 12 Decorative paving treatments to the existing Park Lane block footpath provide visual indicators of interblock connection points.

- 13 Additional tree planting and seating to the front and rear courtyard areas of the Lennox Head Culture and Community Centre softens the building facade and provides shade to the footpath.
- 14 Secure bicycle storage lockers and maintenance pillar near the community centre offer village workers an alternative way to travel to work - location to be determined.
- 15 Possible future artwork to skate park wall

PARK LANE: THE PLACE WE WANT

A SLOW SIDE PATH - NOT A FAST SHORT CUT



ballina shire council
 DRAFT 29 May 2020
 Sheet 15 of 22

A SLOW SIDE PATH...

- 16 The pathway on the western side of Park Lane could form part of the future extension to the Coastal Shared Pathway. This concept accommodates this opportunity.
- 17 Upon relocation of the fire brigade to their new site, a flush "shared-zone" across Mackey Lane improves connectivity between the Community Centre and the site creating potential for the shared pathway, green space as well as a possible future commuter cycling hub and additional carparking (a solution with the fire brigade is shown).

NOT A FAST SHORT CUT

- 18 Raised thresholds with decorative paving and defined pedestrian crossing points assist with visual identification of the western / northern gateways into the village, slow traffic and provide safer, more equitable pedestrian movement across Byron Street.
- 19 A reduced speed zone on Park Lane and raised thresholds slow traffic and improve pedestrian safety at key pedestrian walking desirelines.

- 20 Decorative paving treatments to the existing Park Lane block footpath provide visual indicators of interblock connection points.
- 21 Provision of a defined pathway and parking spaces along Byron Street allows for street tree planting and a greener gateway to the village main street.

PARK LANE: THE PLACE WE WANT

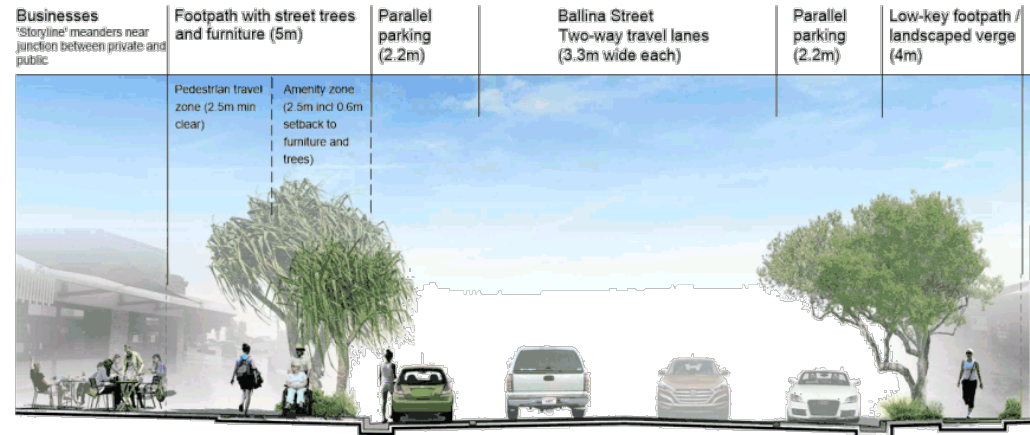
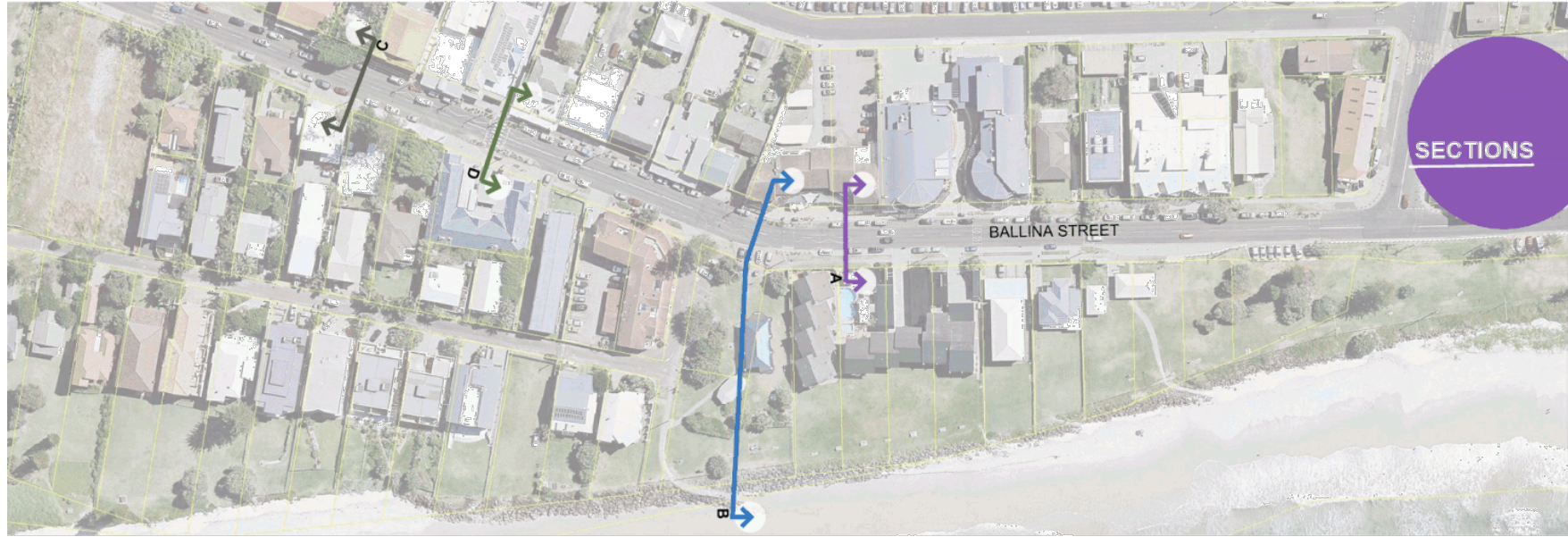
A SLOW SIDE PATH - NOT A FAST SHORT CUT

BALLINA STREET: THE PLACE WE WANT

GREEN GATEWAY INTO CENTRAL PEDESTRIAN-ORIENTED COMMUNITY SHOPPING & SOCIAL ZONE



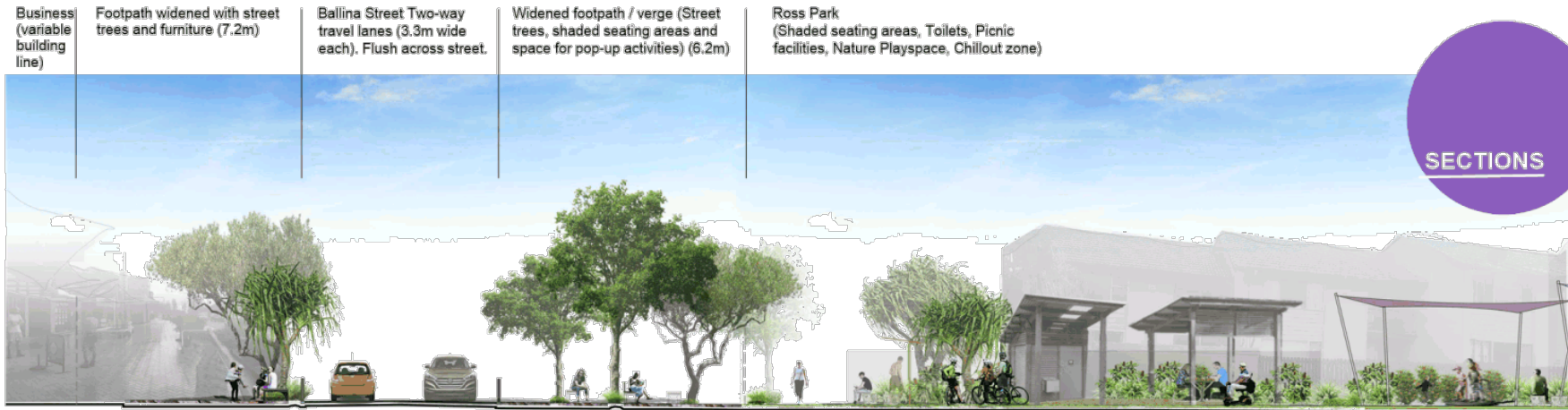
ballina shire council
DRAFT 29 May 2020
Sheet 16 of 22



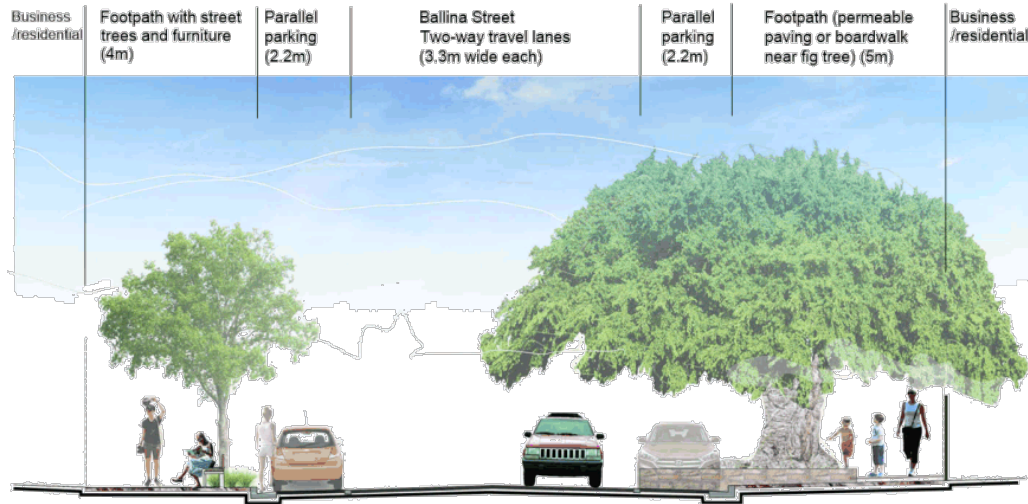
ILLUSTRATIVE SECTION A: TYPICAL BALLINA STREET NORTH
Not to Scale



8.5 **Lennox Village Vision - Draft Concept Plan**



8.5 **Lennox Village Vision - Draft Concept Plan**

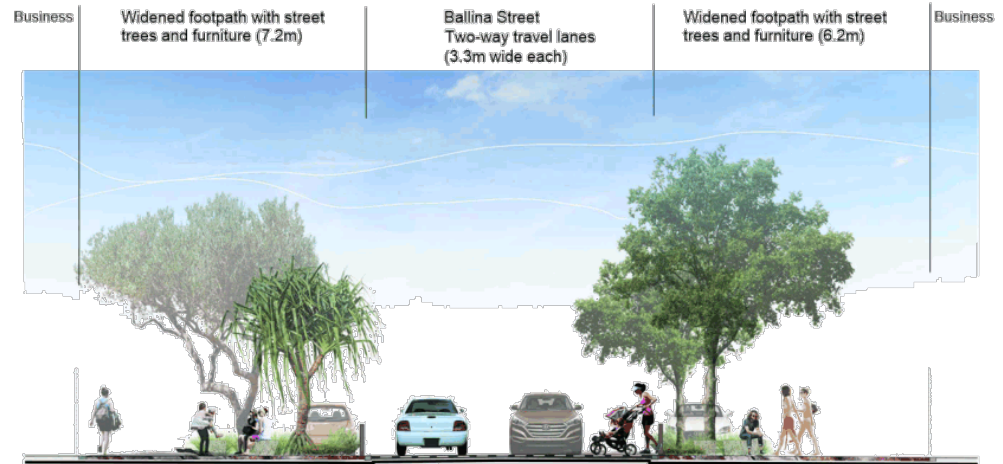
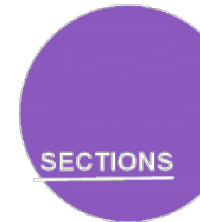


ILLUSTRATIVE SECTION C: BALLINA STREET SOUTH NEAR FIG TREE



- Acmena hemilampra (Blush satin ash)
- Acmena smithii (Common lilly pilli)
- Backhousia citriodora (Lemon myrtle)
- Banksia integrifolia (Coast banksia)
- Cupaniopsis anacardioides (Tuckeroo)
- Elaeocarpus reticulatus (Blueberry ash)
- Hibiscus tileaceus (Cottonwood)
- Pandanus tectorius (Screw pine)
- Syzygium oleosum (Blue lilly pilli)
- Syzygium floribunda (Weeping lilly pilli)

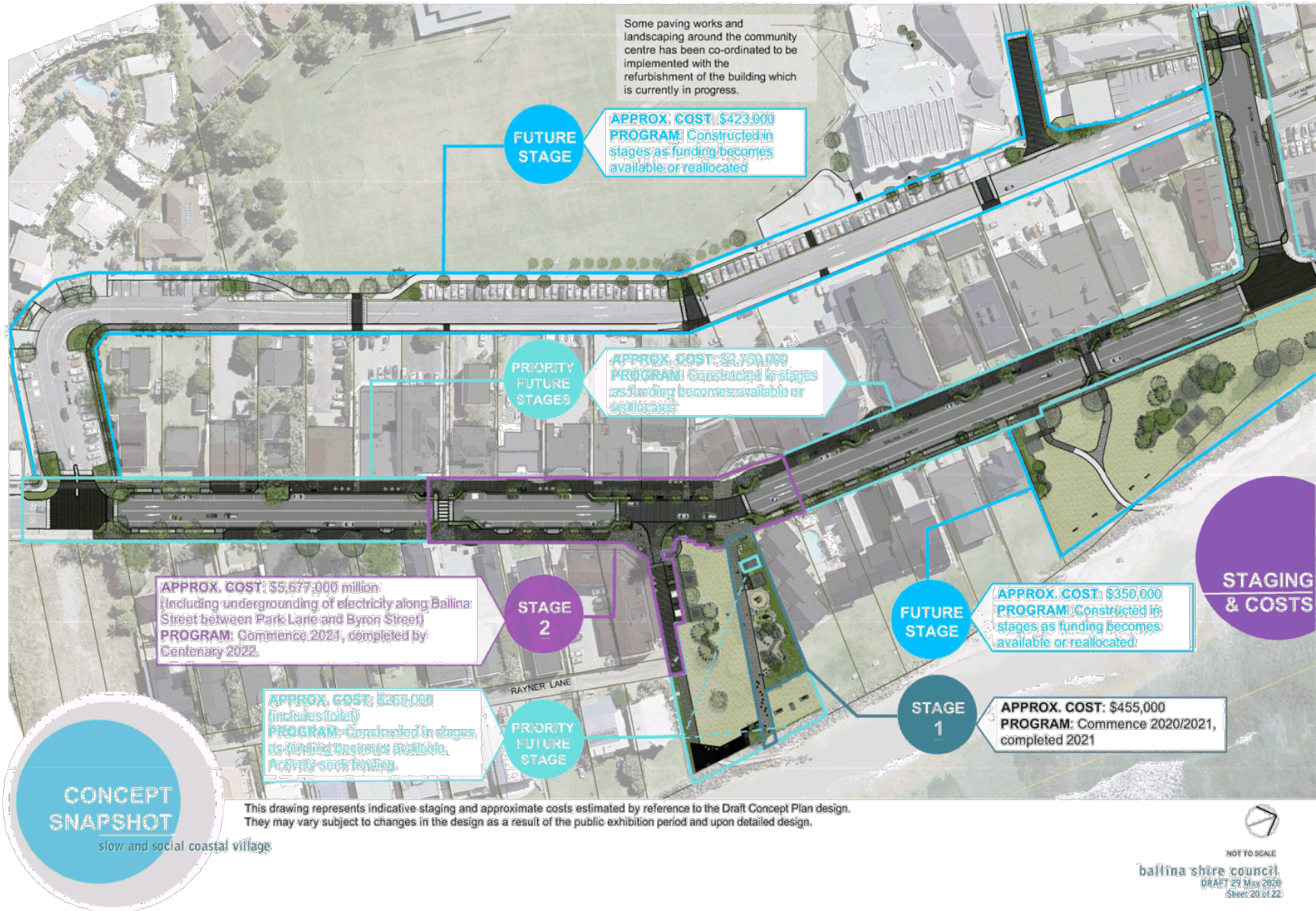
SUITABLE STREET TREES



ILLUSTRATIVE SECTION D: BALLINA STREET SOUTH AT THE PEDESTRIAN CROSSING



ballina shire council
 DRAFT 29 May 2020
 Sheet 19 of 22





lennoxVILLAGEvision

SOME KEY OUTCOMES

These noted outcomes apply to the concept in it's entirety. This concept is subject to detailed design and if adopted would be staged according to available budgets and priorities determined by reference to the community Place Directions.

Minimise negative impacts on the environment & maximise climate change mitigation.

- 100% native (Indigenous preferred) plant species.
- Undergrounding of electricity enables planting of street trees on Ballina Street for shade.
- Approx. 65 new street trees in Ballina Street alone and many garden areas will provide shade, cooling, permeability and green of the street. There is also a lot more planting proposed in other streets and parks.
- 14 new bicycle racks as well as secure locker spaces are proposed to support commuters.
- Solar lighting in parks.

PLACE DIRECTION #1

Offer a diversity of open spaces with a wider range of activities and amenities for all ages / interests.

- Two open space areas including: 2 toilet facilities (multiple toilets), change area, picnic shelters with table settings, picnic pods, all-abilities play area including nature play, chill-out zone, passive recreation zone and lots of open grass to sit on. There is also Williams Reserve and the beach!

PLACE DIRECTION #2



Celebrate what makes Lennox Head Village special: environmental, social, economic & cultural.

- Views to the beach and headland are retained and in Lennox Park enhanced.
- Uses new and pre-loved materials where possible (preferably from local sources and suppliers).
- Provides for community art and expression via adaptable community spaces, community pavement bricks, turtle artwork in the nature play area and urban storyline.
- Furniture and materials offer variety and choice.
- Accommodates (as separate works) the future extension of the Coastal Shared Pathway connecting the village centre to local landscapes of Lake Ainsworth and Lennox Point and to the centre of Ballina.

PLACE DIRECTION #3

Re-balance priority between people and cars to make it safer and more comfortable for all.

- 48.5 lineal metres (width) of level pavement (in 4 places) where pedestrians can safely cross Ballina Street and 52 lineal metres (width) in Rayner Lane. Raised thresholds will slow traffic speeds making it safer to cross at non-designated locations as well. There are also additional safer level pavement areas to cross Park Lane and Byron Street.
- Reduction in speed limit from 50km/hr to 40km/hr on Park Lane = 55% reduction in the likelihood of pedestrian or cyclist dying in a collision on that street (World Resources Institute, Cities Safer by Design, 2015)
- 100% of footpath pavements in Ballina Street upgraded to comply with relevant standards.
- 100% completion of the footpath around the village block.

PLACE DIRECTION #4

Create a physical environment that supports self sustaining community, social activity and events.

- Accommodates (as separate works) a future extension of the Coastal Shared Pathway.
- Accommodates buses in the heart of the village.
- Footpath popouts and widening provides more space for accidental meetings and social exchange. This encourages people to stay longer and builds social resilience and happiness.
- "What attracts people most, it would appear, is other people" (William H Whyte, "The Social Life of Small Urban Spaces", 1980)*

PLACE DIRECTION #5

Support local business diversity and fine-grain shop frontages to build attractiveness of the centre for jobs & night time economy - support diverse housing choices.

- There is approximately 100 lineal metres of seating for people in Ballina Street - including a variety of styles and designs. There is also additional informal seating and places to sit in the parks!
- Clearly identifiable interblock walkway connections achieve street permeability.
- Close to 2000sq.m. of open grass area in Lennox Park and Ross Park supports small to medium events. The village hub pavement area also can support small pop-up community installations.

PLACE DIRECTION #6

1 space : 10 people
The design supplies 1 carparking space per 9.7 people aged between 20 and 79 years. This still represents an oversupply of spaces. Based upon a population 4,556 people aged between 20 and 79 years - 2016 Census.

30% Tree Canopy Cover, and that is just in Ballina Street!
About 65 trees are proposed to be planted in Ballina Street, which at maturity, has the potential to provide 30% tree canopy cover over the street. In addition to this, building awnings provide shade and there are also more trees in the parks. (Based upon an average canopy area of 38 sq. m. per tree)

slower, safer streets
more attractive
people stay longer
diverse people & places



lennoxVILLAGEvision

Further information contact
Ballina Shire Council
1300 864 444
council@ballina.nsw.gov.au

DRAFT Issue date 29 May 2020

ballina shire council

Lennox Village Vision draft concept plan

Draft Concept Plan - Community Feedback

Ballina Shire Council has prepared a draft concept plan for the revitalisation of the Lennox Head village centre. The draft plan looks at ways that we can improve public amenity and make better streets and places for people within the village centre whilst at the same time celebrating what makes it special. To create the plan, we used community ideas from years of engagement.

The study area includes Ballina Street (generally between Park Lane and Byron Street), Park Lane and Byron Street (between Ballina Street and Stewart Street).

The Lennox Village Vision draft concept plan is now on public exhibition. You are invited to have your say on the concept design by completing this short feedback form.

Your feedback will assist Council in understanding the community's aspirations for Lennox Head village centre public realm and guide future funding decisions for the village centre.

This feedback form will be open until 10 July 2020. Please submit only one response per person. Numerous responses from the one person are easily identified. In cases where more than one response is received from the same person, only the first response will be considered.

If you have any questions about either this feedback form or the concept design, please contact Ballina Shire Council's Strategic Planning team on telephone 1300 864 444.

For information on how personal information is stored and handled, please read Council's [privacy disclosure statement](#).

1. Your age

17 and under

18-34

35-49

50-64

65+

2. If you have any children, please tell us their age.

5 and under

6-12

13-17

3. What is your connection to Lennox Head? (Tick all that apply)

- I reside in the Lennox Head **village centre**
- I reside in Lennox Head or Skennars Head, outside of the village centre
- I reside elsewhere within Ballina Shire
- I reside within Byron, Lismore or Richmond Valley local government areas
- I reside outside of the NSW Northern Rivers region
- I work in the Lennox Head **village centre**
- I own property within the Lennox Head **village centre**
- I own a business that operates within the Lennox Head **village centre**
- I am a holiday maker in Lennox Head
- Other (please specify)

Lennox Village Vision overall draft concept plan (click [here](#) to view the details of the draft plan)



4. What elements of the concept design do you most like and why?

1.

2.

3.

4.

5.

5. What elements of the concept design do you least like and why?

1.

2.

3.

4.

5.

6. Thinking about the concept plan, is there another element you would add that is not already on the plan? If so, why?

7. Have you got any other ideas or suggestions (not already mentioned) to improve the draft concept plan?

8. OPTIONAL QUESTION - If you are interested in being contacted by Ballina Shire Council to participate in future community engagement, please confirm your contact details below.

First Name

Last Name

E-mail address

Contact phone number

LENNOX VILLAGE VISION

PUBLIC EXHIBITION - SUMMARY OF ONLINE FEEDBACK FORM RESPONSES

Analysed 13 July 2020

Exhibition Period: 12 June 2020 – 10 July 2020

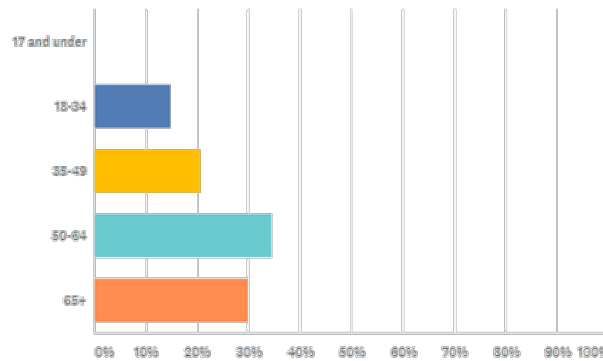
Total number of online feedback forms received: 88

At the close of the survey, a total of 88 online feedback forms had been submitted. Whilst not all respondents provided their contact name, it was observed that 4 respondents have completed an online feedback form as well as provided individual submissions via letter or email. All online feedback represents the opinions of individuals where as some of the submissions received via email and letter also represent the opinions of local community groups.

Question 1: Your Age

Your age

Answered: 87 Skipped: 1

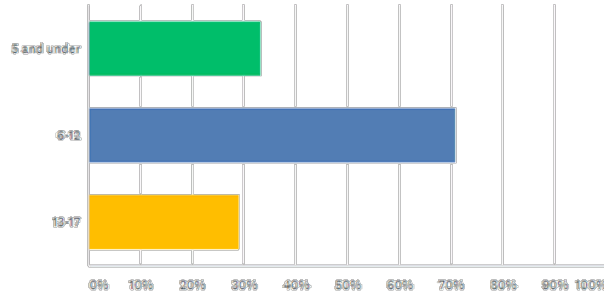


ANSWER CHOICES	RESPONSES
17 and under	0.00% 0
18-24	14.94% 13
25-49	20.69% 18
50-64	34.48% 30
65+	29.89% 26
TOTAL	87

Question 2: If you have any children please tell us their age.

If you have any children, please tell us their age.

Answered: 24 Skipped: 64

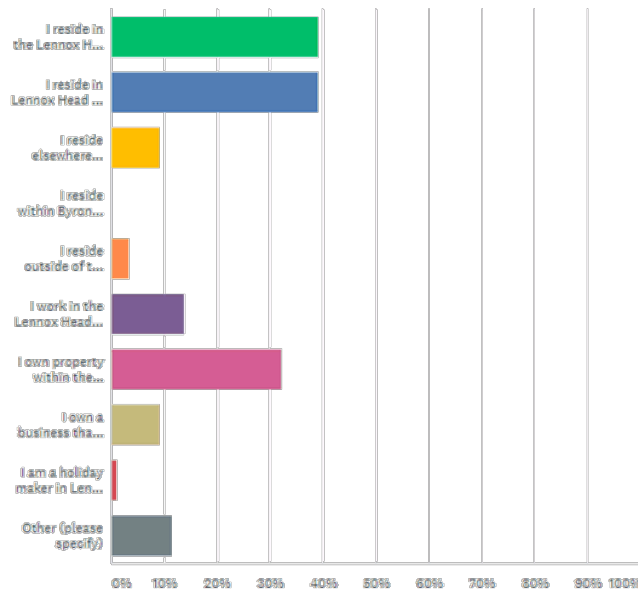


ANSWER CHOICES	RESPONSES
5 and under	33.33% 8
6-12	70.83% 17
13-17	29.17% 7
Total Respondents: 24	

Question 3: What is your connection to Lennox Head?

What is your connection to Lennox Head? (Tick all that apply)

Answered: 67 Skipped: 1



ANSWER CHOICES	RESPONSES
I reside in the Lennox Head village centre	39.08% 34
I reside in Lennox Head or Skennars Head, outside of the village centre	39.08% 34
I reside elsewhere within Ballina Shire	9.20% 8
I reside within Byron, Lismore or Richmond Valley local government areas	0.00% 0
I reside outside of the NSW Northern Rivers region	3.45% 3
I work in the Lennox Head village centre	13.79% 12
I own property within the Lennox Head village centre	32.18% 28
I own a business that operates within the Lennox Head village centre	9.20% 8
I am a holiday maker in Lennox Head	1.15% 1
Other (please specify)	Responses 11.49% 10
Total Respondents: 87	

Question 4: What elements of the concept design do you most like and why? (Respondents were asked to list up to 5 elements)

What elements of the concept design do you most like and and why?

Answered: 73 Skipped: 15

ANSWER CHOICES	RESPONSES
1.	Responses 100.00% 73
2.	Responses 76.71% 56
3.	Responses 62.01% 46
4.	Responses 47.95% 36
5.	Responses 35.62% 26

The responses to this question were extensive. For the purpose of concise reporting the most popular responses were as follows:

1. Trees, gardens, greening, shade and amenity
2. More, better, safer and pedestrian friendly pathways, level surfaces, better pedestrian road crossing points (pedestrians first)
3. Rework of Ross Park, playground design and nature playground
4. Traffic calming, slowing down traffic, two-way street and removal of carparking for pedestrian areas and planting
5. New accessible toilet in Ross Park
6. Removal of the brick shelter in Lennox Park, opening up Lennox Park, general upgrading of Lennox Park

Other comments included:

- Bike racks
- Not trying to change too much, modest changes, subtle and gentle upgrade
- Making the space more natural, seaside environment, retaining village elements

- Leaning rail in Ross Park
- Safer
- Inviting
- Accessible and lots more seating
- Undergrounding of electricity
- Overall aesthetic, improved aesthetic
- More outdoor dining opportunities
- Upgrading of the toilets in Lennox Park
- Incorporation of artwork

Question 5: What elements of the concept plan do you least like and why? (Respondents were asked to list up to 5 elements)

What elements of the concept design do you least like and and why?

Answered: 75 Skipped: 13

ANSWER CHOICES	RESPONSES
1. Responses	100.00% 75
2. Responses	61.33% 46
3. Responses	46.67% 35
4. Responses	24.00% 18
5. Responses	17.33% 13

The responses to this question were extensive. For the purpose of concise reporting the most popular responses were as follows:

- Removal of carparking spaces, especially near Ross Park and Rayner Lane
- Ross Park upgrade – these comments generally supported the upgrading of Ross park and made suggestions for improvements to the design such as low fencing near playground, addition of a swing, a bigger playground, more seating
- A toilet in Ross Park (most of these comments came from residents of the apartments north of the park)
- Removal of the brick shelter in Lennox Park

Other comments included:

- Trees may damage the road, too many trees and gardens (maintenance concerns)
- Not enough focus on the natural environment
- Not enough trees and gardens
- Taking the charm away from the village
- Disruption to business during construction
- There should be more crossings
- There should be more focus on pedestrians
- Should get rid of more parking, less parking, wider footpaths and outdoor dining
- No pedestrian crossing at the skate park
- Lack of consideration of business frontages to Park Lane

- 40km/hr is too fast, slower traffic speeds
- Project costs
- Do we really need to do anything?
- Inadequate consideration of cyclists
- Poor accessibility to picnic shelters and some seating
- Inadequate wheelchair parking spaces in Ballina Street
- Sanitisation of community facilities
- Lack of traffic management at corner of Byron Street and Ballina Street
- More seating is required at the southern end of Ballina Street
- Two toilets in Ross Park preferred
- Desire to include Rayner Lane in the study area
- Retaining the unsafe existing 90 degree parking in Park Lane
- Playground needs to move to Lennox Park
- Buses should not be in the village centre
- Include water features to cool the environment
- Include outdoor exercise equipment
- Lack of colour
- Design focuses on Ross Park precinct but only a small portion of the budget is allocated to this area

Question 6: Thinking about the concept plan, is there another element you would add that is not already on the plan? If so, why? (Answered: 66, Skipped: 22)

The responses to this question were extensive. For the purpose of concise reporting the feedback included the following general topics (items mentioned in questions 4 and 5 have not been reiterated here):

- More local indigenous commemoration
- Fairy lights in tall trees
- Reconfiguring Rayner Lane to facilitate alternative and local traffic flows only, upgrade Rayner Lane, include separate pedestrian pathway in Rayner Lane
- Addition of bike racks near the fig tree in Ballina Street
- Consider water conservation and recycling, underground water storage tanks in Lennox Park
- What carbon footprint will the project have?
- Gentle attractive street lighting, smart, dimmable and possibly colour changing
- Lighting which is shielded to residences
- Artistic design for the toilet in Ross Park
- Continuation of the coastal walking path along the beach edge
- A feature wall along the northern edge of Ross Park
- Parking outside the village improved cycling connections to the village centre
- Too much emphasis on businesses
- Criticism of one-way trial process
- Scrap the plan, cancel all of it, save rate payer money
- Get the work done ASAP - I want to be around to see it completed, plan is pretty good
- Seat hang bike racks are preferred over wheel stands
- Commit to becoming Australia's first 'Dark Sky Community'

- More planting in the laneway at Ross Park
- A round about at Ballina Street and Byron Street intersection
- Get the whole village looking consistent
- Use similar design features to those implemented at Lake Ainsworth
- A viewing deck and platform with leaning rail at Lennox Park also
- Roundabouts at Park Lane intersections
- Solar system on toilet blocks and picnic shelters
- Covered space for group outdoor exercise
- More bike lanes and bike parking
- BBQ in either park

Question 7: Have you got any other ideas or suggestions (not already mentioned) to improve the draft concept plan? (Answered: 51, Skipped: 37)

The responses to this question were extensive. For the purpose of concise reporting the feedback included the following general topics (items mentioned in questions 4 and 5 have not been reiterated here):

- Gate and fence Ross Park for child safety
- Aboriginal cultural artwork within the park
- Move the playground out of Ross Park and make Ross Park a town green
- Thanks for the hard work. It looks great. Great ideas through the collaboration of locals and professionals.
- Cancel it!
- 90 degree rear in parking in Park Lane safer
- Don't block the car repair business off with trees
- Better stormwater treatment
- Wayfinding signage to key community facilities and features
- Adult swings in Ross Park
- Use natural materials and some bespoke elements
- No more sandstone blocks
- E-bike hire to encourage people in residential parts of the village to ride to the village centre instead of driving
- Low key-warm lighting
- Make seating more conversational in shape/arrangement
- Information about materials and details would help
- Electrical points for festival lighting
- Not like the community centre renovation

Lennox Village Vision draft concept plan

Q4 What elements of the concept design do you most like and why?

Answered: 73 Skipped: 15

ANSWER CHOICES	RESPONSES	
1.	100.00%	73
2.	76.71%	56
3.	63.01%	46
4.	47.95%	35
5.	35.62%	26

8.5 Lennox Village Vision - Draft Concept Plan

Lennox Village Vision draft concept plan

#	1.	DATE
1	Ross park crossing on Ballina St - safer for crossing	7/11/2020 11:06 AM
2	Shade trees big and tall and broad and attractive ones please to provide shade please otherwise they are just trees	7/10/2020 10:10 PM
3	Improved paving - very uneven at the present	7/10/2020 8:27 PM
4	Improved look of the village	7/10/2020 5:05 PM
5	Improved look of the village	7/10/2020 4:57 PM
6	Upgrade to Ross Park	7/10/2020 3:06 PM
7	Lennox Park, Removal of Shelter shed and native plantings etc etc	7/10/2020 2:57 PM
8	I consider that the overall plan is excellent	7/10/2020 1:57 PM
9	More street furniture	7/10/2020 12:09 PM
10	Green gateway in Ballina Street	7/10/2020 10:33 AM
11	The greening of the village...Enhancing our environment and combatting climate change	7/9/2020 4:31 PM
12	Up date of tired street scape.	7/9/2020 10:21 AM
13	underground electricity	7/9/2020 7:08 AM
14	Lack of emphasis on parking. The town is for people not cars. Hold your ground!	7/8/2020 7:30 PM
15	Ross Park toilets	7/8/2020 5:04 PM
16	revamping of both parks	7/8/2020 4:31 PM
17	more pedestrian focus- slow down the traffic	7/8/2020 2:29 PM
18	Pedestrian zones are improved – flush surface is a great addition to the main road (but should be extended)	7/8/2020 1:23 PM
19	That Ross Park has been retained	7/8/2020 1:05 PM
20	Increased pedestrian amenities	7/8/2020 12:51 PM
21	The redevelopment of Ross Park is a key element of the proposed plan. I like the removal of car spaces adjacent the Point Cafe. This must make the dining experience here more pleasant without car fumes.	7/8/2020 12:24 PM
22	Bigger sidewalks	7/8/2020 6:24 AM
23	Major tree plantings along Ballina St, around Community Centre and Byron St , Park Lane.	7/7/2020 8:10 PM
24	Undergrounding of electricity	7/7/2020 4:01 PM
25	Better balance between cars and pedestrians	7/7/2020 1:58 PM
26	The gateways to town because immediatly say to drivers- people first	7/6/2020 1:52 PM
27	Improved safety for pedestrians	7/3/2020 2:03 PM
28	More pedestrian areas and access to the beach front	7/3/2020 7:58 AM
29	Pedestrian friendly, mall type feel	6/30/2020 2:14 PM
30	Lennox Park as it remains mostly untouched	6/29/2020 6:41 PM
31	more trees	6/29/2020 4:21 PM
32	nil	6/29/2020 4:01 PM
33	Updating the with trees	6/28/2020 11:27 AM
34	Overall ok	6/28/2020 9:53 AM
35	Pedestrian crossings	6/27/2020 2:51 AM
36	more greenery	6/26/2020 6:09 PM
37	nothing in particular	6/25/2020 12:05 PM
38	more trees and gardens	6/24/2020 3:35 PM

8.5 Lennox Village Vision - Draft Concept Plan

Lennox Village Vision draft concept plan

39	Tidy up the pavements throughout village, mess currently	6/22/2020 3:56 PM
40	rework of ross park	6/20/2020 6:34 PM
41	Raised road for pedestrian access across street and slowing traffic	6/20/2020 7:58 AM
42	The addition of toilets	6/19/2020 3:50 PM
43	Increased tree planting and shade canopy along Williams Reserve and Ballina Street	6/18/2020 5:16 PM
44	Opening up of facilities	6/17/2020 1:59 PM
45	retaining village elements	6/16/2020 9:44 PM
46	the back ground information and the present strengths of the village.	6/15/2020 7:29 PM
47	pedestrian friendly and enhances social engagement	6/15/2020 6:57 PM
48	Pedestrians first	6/15/2020 6:54 PM
49	None	6/15/2020 6:30 PM
50	Refresh and modernisation of street scape	6/15/2020 5:07 PM
51	New amenities in particular more toilets	6/15/2020 4:20 PM
52	outdoor seating for eateries	6/15/2020 2:56 PM
53	Overall aesthetic is good	6/15/2020 2:13 PM
54	Park	6/14/2020 8:16 PM
55	Upgrade of Lennox Park	6/14/2020 7:45 PM
56	Focus on environmental sustainability.	6/14/2020 6:03 PM
57	More green areas	6/14/2020 3:34 PM
58	Trees and gardens. Shade and amenity	6/14/2020 1:55 PM
59	The kids are revamped. New fresh, something for older children instead of only catering for younger ones.	6/14/2020 1:24 PM
60	More trees and plants-it needs it	6/14/2020 12:24 PM
61	New toilet in Ross Park	6/14/2020 12:24 PM
62	New beautiful park with trees	6/14/2020 9:34 AM
63	ANY improvement to Ross is welcome	6/14/2020 7:24 AM
64	More trees	6/14/2020 12:27 AM
65	More trees	6/13/2020 6:16 PM
66	toilet	6/13/2020 5:42 PM
67	The bathroom as it's easier to access then the current ons	6/13/2020 3:22 PM
68	Planting of trees	6/13/2020 2:19 PM
69	surface from road to Ross park is at the same level	6/13/2020 1:52 PM
70	Not trying to change too much	6/13/2020 12:45 PM
71	All	6/12/2020 11:17 PM
72	Toilet facilities more accessible	6/12/2020 9:39 PM
73	Ross park redesign incorporates move shade picnic area and opens up space and usage to all age children.	6/12/2020 2:56 PM

8.5 Lennox Village Vision - Draft Concept Plan

Lennox Village Vision draft concept plan

#	2.	DATE
1	Adding Toilet To Ross Park - no more racing across busy driveways to go to Lennox Park toilets	7/11/2020 11:06 AM
2	More uniform wider walkways because it is currently uneven which is dangerous patchwork which looks sloppy And too narrow we like to meet people in the street and stop and chat	7/10/2020 10:10 PM
3	Inclusion of toilet block to Ross Park. This is an important addition to the playground area for children and paratents. Tourists and residents are often looking for a toilet facility in this area.	7/10/2020 3:06 PM
4	Improving pedestrian spaces	7/10/2020 12:09 PM
5	New safe pavement	7/10/2020 10:33 AM
6	Taking traffic out of the centre and putting pedestrians first	7/9/2020 4:31 PM
7	Planting on Byron Street (although Hippy and Jacqui will FREAK OUT)	7/8/2020 7:30 PM
8	Reduction in parking Rayner Lane near park	7/8/2020 5:04 PM
9	extra seating and facilities in both parks and along street	7/8/2020 4:31 PM
10	trees - coastal ambience	7/8/2020 2:29 PM
11	Increased vegetation everywhere in the zone	7/8/2020 1:23 PM
12	More plants & trees	7/8/2020 12:51 PM
13	More trees is great	7/8/2020 12:24 PM
14	More open sea views	7/8/2020 6:24 AM
15	Underground power to improve visual amenity and allow natural tree growth.	7/7/2020 8:10 PM
16	Grass verges, trees and garden plantings	7/7/2020 4:01 PM
17	Widening of footpaths giving enhanced opportunities for dining and pedestrian movement.	7/7/2020 1:58 PM
18	Ross park as the heart of the village - the organic play & the loo	7/6/2020 1:52 PM
19	Improved opportunities for informal seating and gatherings	7/3/2020 2:03 PM
20	Treescape	7/3/2020 7:58 AM
21	Expansion and updating of Ross park and reduced car parks there	6/30/2020 2:14 PM
22	parks upgrade	6/29/2020 4:21 PM
23	nil	6/29/2020 4:01 PM
24	Keeping the sea side environment	6/28/2020 11:27 AM
25	Vegetation	6/27/2020 2:51 AM
26	footpath widening	6/26/2020 6:09 PM
27	slowing down of traffic	6/24/2020 3:35 PM
28	Removal of the building in Lennox Park, blocks views and is unsightly	6/22/2020 3:56 PM
29	"Greening" of area	6/20/2020 7:58 AM
30	More structured parking and pedestrian areas	6/19/2020 3:50 PM
31	Better located and increased number of crossings for pedestrians	6/18/2020 5:16 PM
32	Consumer friendly	6/17/2020 1:59 PM
33	ensuring it remains social and environmentally friendly	6/16/2020 9:44 PM
34	Using the above this helps to look for areas to improve	6/15/2020 7:29 PM
35	revamping of Ross and Lennox Parks	6/15/2020 6:57 PM
36	Replanting	6/15/2020 6:54 PM
37	Reduction in speed limit in Park Lane	6/15/2020 5:07 PM
38	Speed humps that slow the traffic especially in Park Lane	6/15/2020 4:20 PM

8.5 Lennox Village Vision - Draft Concept Plan

Lennox Village Vision draft concept plan

39	opening lennox park and removing shelter	6/15/2020 2:56 PM
40	Demolishing of park and plans to rebuild is great	6/15/2020 2:13 PM
41	Consideration of the update of the playground	6/14/2020 7:45 PM
42	Increased tree cover and green spaces to provide a corridor street scape, shade and reduce visual impacts of building	6/14/2020 6:03 PM
43	New pathways.	6/14/2020 1:55 PM
44	More seating/eating tables	6/14/2020 1:24 PM
45	Pathways renovated- as now look dirty and uneven	6/14/2020 12:24 PM
46	Nature playground	6/14/2020 12:24 PM
47	New natural playground	6/14/2020 9:34 AM
48	Shady sitting areas to enjoy the views and eat lunch	6/14/2020 7:24 AM
49	The Playground	6/14/2020 12:27 AM
50	Safe	6/13/2020 6:16 PM
51	nature playground	6/13/2020 5:42 PM
52	The picnic area looks nicer then current area	6/13/2020 3:22 PM
53	Making the spaces more natural	6/13/2020 2:19 PM
54	Good use of trees	6/13/2020 1:52 PM
55	Not completely	6/13/2020 12:45 PM
56	More interesting playground equipment for a wider range of children	6/12/2020 9:39 PM

Lennox Village Vision draft concept plan

#	3.	DATE
1	Nature playground - encourages imaginative play and connection to the area for my kids	7/11/2020 11:06 AM
2	Removing the parking on the bend near the skate park it is dangerous and slowing the speed limit but I think the shared pedestrian zone should be a straight out pedestrian crossing	7/10/2020 10:10 PM
3	Creation of viewing deck at Ross Park. This is a well known viewing area already and formal decking would greatly improve this aspect.	7/10/2020 3:06 PM
4	Park improvements, toilet in Ross Park	7/10/2020 12:09 PM
5	Creating social connectivity through hubs and laneways	7/9/2020 4:31 PM
6	Reduction of parking in prime location at Rayner Lane / Ross Park - this should only be PWD parking. Could a third WPWD space be found there?	7/8/2020 7:30 PM
7	Safer pedestrian movement over Ballina Street	7/8/2020 5:04 PM
8	extra planting of native trees	7/8/2020 4:31 PM
9	picnic areas- encourage people to be in nature	7/8/2020 2:29 PM
10	Bike parking and provision for bikes to move safely	7/8/2020 1:23 PM
11	Increased Green space	7/8/2020 12:51 PM
12	More shade areas throughout the village is also good	7/8/2020 12:24 PM
13	Lots more Seating and picnic area	7/8/2020 6:24 AM
14	Pedestrian connectivity to improve walkability and safety especially crossing Ballina St, but also Park Lane.	7/7/2020 8:10 PM
15	Defined pedestrian crossings	7/7/2020 4:01 PM
16	The retention and enhancement of Ross Park as principally a childrens play park. The current play area is arguably the most popular and most utilised in the Municipality and it is excellent to see this facility retained and enhanced. It is a pity however to see the installation of public toilets in the park as there are already public toilet facilities a very short distance away to the north.	7/7/2020 1:58 PM
17	greening of the village	7/6/2020 1:52 PM
18	Enhanced greening and shading	7/3/2020 2:03 PM
19	Redesign of Ross Park	7/3/2020 7:58 AM
20	Defined crossings of park lane	6/30/2020 2:14 PM
21	No encroachment of Williams reserve	6/29/2020 4:21 PM
22	nil	6/29/2020 4:01 PM
23	Updating pavement areas	6/28/2020 11:27 AM
24	Bike racks	6/27/2020 2:51 AM
25	playground renovated	6/24/2020 3:35 PM
26	Generally sensible use of thresholds to slow traffic and broaden pavements for pedestrians	6/22/2020 3:56 PM
27	Focus on Ross Park	6/20/2020 7:58 AM
28	Wider level footpaths and less cars to cater for people with range of abilities and range of ages	6/18/2020 5:16 PM
29	Greening the aarea	6/17/2020 1:59 PM
30	traffic calming	6/16/2020 9:44 PM
31	increased use of (native) trees and shade	6/15/2020 6:57 PM
32	Cooling	6/15/2020 6:54 PM
33	Improved footpaths	6/15/2020 4:20 PM
34	more pedestrian crossings	6/15/2020 2:56 PM

8.5 Lennox Village Vision - Draft Concept Plan

Lennox Village Vision draft concept plan

35	The focus on pedestrian movement over traffic	6/14/2020 6:03 PM
36	Planting no higher than 2 metres along beach front, to not block out beach view (leaving existing trees though)	6/14/2020 1:24 PM
37	New toilets- as needed	6/14/2020 12:24 PM
38	Undergrounding of electricity	6/14/2020 12:24 PM
39	Playground accessible for disable	6/14/2020 9:34 AM
40	Retaining trees	6/14/2020 7:24 AM
41	The disabled parking	6/14/2020 12:27 AM
42	Inviting	6/13/2020 6:16 PM
43	seating	6/13/2020 5:42 PM
44	Play equipment looks better and more enjoyable for the kids	6/13/2020 3:22 PM
45	No new apartment block which have started to go up alot destroying the ambience and aesthetic of the town	6/13/2020 12:45 PM
46	Two way street retained	6/12/2020 9:39 PM

8.5 Lennox Village Vision - Draft Concept Plan

Lennox Village Vision draft concept plan

#	4.	DATE
1	Replacing Picnic Shelter - current shelter is too dark, closed-in and not conducive to Sharing with others	7/11/2020 11:06 AM
2	Timber decking and the leaning post Because that's what we do we go and check out the surf and look out over the ocean I think you could use this further north as well	7/10/2020 10:10 PM
3	General concept of improved and safer walking areas.	7/10/2020 3:06 PM
4	Upgrading and improving the town centre as a whole	7/10/2020 12:09 PM
5	Improvement to Ross Park and developing it as a village central point	7/9/2020 4:31 PM
6	Removal of the brick picnic shelter - it is ugly and uninviting	7/8/2020 7:30 PM
7	Removal of eyesore picnic shelter	7/8/2020 5:04 PM
8	leaning rail- retain existing habits	7/8/2020 2:29 PM
9	Extended footpaths and pop-out zones are great all round	7/8/2020 1:23 PM
10	Use of timber	7/8/2020 12:51 PM
11	Slowing traffic through the cbd is imperative.	7/8/2020 12:24 PM
12	More trees and vegetation	7/8/2020 6:24 AM
13	Lennox Park with removal of bus shelter and nice picnic tables and curved timber seating and Ross Park - all aspects with cross age group usage and focal point of village. Adventure nature playground great especially tree climbing frame etc.	7/7/2020 8:10 PM
14	The shelter shed going. Its nondescript and poorly located in comparison to similar structures along the coastline which have fabulous views. A measure of this is no-one rushes to dibs it for birthday and/or Christmas parties.	7/6/2020 1:52 PM
15	Inclusion of heritage acknowledgements	7/3/2020 2:03 PM
16	Traffic calming in main road and park lane	6/30/2020 2:14 PM
17	hopefully better quality beach access	6/29/2020 4:21 PM
18	nil	6/29/2020 4:01 PM
19	underground electricity	6/28/2020 11:27 AM
20	Speed limiting design	6/27/2020 2:51 AM
21	footpaths fixed up	6/24/2020 3:35 PM
22	Maintains two way traffic and parking, the one way trial demonstrated one way won't work	6/22/2020 3:56 PM
23	New paving on footpath	6/20/2020 7:58 AM
24	Better lines of vision to ocean on Lennox Park	6/18/2020 5:16 PM
25	modest changes	6/16/2020 9:44 PM
26	sensible street crossing points	6/15/2020 6:57 PM
27	Traffic calming	6/15/2020 6:54 PM
28	More outdoor dining without overcharging business owners for the privledge	6/15/2020 4:20 PM
29	widening of paths	6/15/2020 2:56 PM
30	Removal of powerlines down the main street.	6/14/2020 6:03 PM
31	Two way traffic, one way has ALWAYS been a a failure!!!	6/14/2020 1:24 PM
32	New seating-because not enough now	6/14/2020 12:24 PM
33	New pedestrian crossings	6/14/2020 12:24 PM
34	New toilet block	6/14/2020 9:34 AM
35	Installation of one toilet	6/14/2020 7:24 AM

8.5 Lennox Village Vision - Draft Concept Plan

Lennox Village Vision draft concept plan

#	S.	DATE
1	Upgrading toilets in Lennox Park - so old and dark	7/11/2020 11:06 AM
2	Wishing tree creative bricks adds personality otherwise one town just looks like the next a little more personality would be great	7/10/2020 10:10 PM
3	Electricity underground	7/10/2020 12:09 PM
4	Improvement to Lennox Par, adding amenities but retaining its rustic appearance	7/9/2020 4:31 PM
5	Planting on Ballina Street - can we have more please	7/8/2020 7:30 PM
6	Ross Park improvement in amenity generally	7/8/2020 5:04 PM
7	toilets in Ross park- saves the walk to bus shelter	7/8/2020 2:29 PM
8	Paved footpaths are most desirable (provided the correct material is used)	7/8/2020 1:23 PM
9	Bike Parking	7/8/2020 12:51 PM
10	Minimising cars in village and making it more pedestrian friendly is also a winner.	7/8/2020 12:24 PM
11	More pedestrian crossings	7/8/2020 6:24 AM
12	Focus on enhancing opportunities for social connection is fabulous	7/7/2020 8:10 PM
13	Underground power and safer footpaths	7/3/2020 2:03 PM
14	Better designed open spaces	6/30/2020 2:14 PM
15	nil	6/29/2020 4:01 PM
16	clean and tidy. Remember the Tidy Town Award	6/28/2020 11:27 AM
17	Pedestrian paths	6/27/2020 2:51 AM
18	toilet at playground	6/24/2020 3:35 PM
19	Incorporating art work	6/20/2020 7:58 AM
20	Provision of toilet and nature play at Ross Park	6/18/2020 5:16 PM
21	subtle and gentle upgrade	6/16/2020 9:44 PM
22	street art	6/15/2020 6:57 PM
23	The identification of different user needs, eg Ross Park for children, Lennox Park as a quiet space.	6/14/2020 6:03 PM
24	Traffic being slowed- safer	6/14/2020 12:24 PM
25	Widened footpaths and pup-outs	6/14/2020 12:24 PM
26	New paths	6/14/2020 9:34 AM

Lennox Village Vision draft concept plan

Q5 What elements of the concept design do you least like and why?

Answered: 75 Skipped: 13

ANSWER CHOICES	RESPONSES	
1.	100.00%	75
2.	61.33%	46
3.	46.67%	35
4.	24.00%	18
5.	17.33%	13

8.5 Lennox Village Vision - Draft Concept Plan

Lennox Village Vision draft concept plan

#	1.	DATE
1	Main Street speed should be slower than 40km	7/11/2020 11:06 AM
2	Please do not put ugly trees in just because they are natives the whole beachside of the main Road down to the clubhouse is lined with the scrappiest ugly natives they make what should be a beautiful foreshore an eyesore	7/10/2020 10:10 PM
3	No car spaces on Rayner lane	7/10/2020 5:05 PM
4	Reduced parking on Rayner Lane	7/10/2020 4:57 PM
5	Exclusion of Rayner Lane upgrade in the concept plan (See below)	7/10/2020 3:06 PM
6	Ross Park: Positioning of toilet facilities adjacent to shops and outdoor eating area. They will not only block the view of the park but will their proximity to eating areas will emit odours to patrons. They also spoil the aesthetic from this perspective. They need to be relocated	7/10/2020 2:57 PM
7	Focusing on the park yet only has 5% of the budget.	7/10/2020 12:09 PM
8	Shelter Shed is historic and must be retained and suitably refurbished	7/9/2020 4:31 PM
9	Playground still in Ross park needs to move to Lennox park which is much safer.	7/9/2020 10:21 AM
10	Nose in parking on Park Lane is very hazardous for pedestrians crossing the road.	7/9/2020 9:37 AM
11	plan to remove ross park	7/9/2020 7:08 AM
12	Not enough widening of footpaths - less parking, more hanging out	7/8/2020 7:30 PM
13	Extent of funds spent on changes to underground electrical	7/8/2020 5:04 PM
14	the removal of the existing weather shed - it should be left as is	7/8/2020 4:31 PM
15	Incredibly unsafe 90 degree parking spots remain in Park Lane should be replaced with angle parking	7/8/2020 1:23 PM
16	Rayner Lane has been entirely ignored but will be heavily influenced by the proposed plans and the likely increased visitation to Lennox Head and resulting traffic load	7/8/2020 1:05 PM
17	Remaining two way street (U turns in Ballina St too common)	7/8/2020 12:51 PM
18	I do not like the proposed removal of the bus shelter. It is very functional, has historical importance and is NOT detrimental to the over all appearance of Lennox Park	7/8/2020 12:24 PM
19	Better design in seating	7/8/2020 6:24 AM
20	Hoping at least a significant number of benches have backs for comfort and relaxation.	7/7/2020 8:10 PM
21	No allowance for more parking spaces	7/7/2020 4:01 PM
22	The gateways construction is not happening at the first stage because they say - slow life now	7/6/2020 1:52 PM
23	More clarity on costings for Stage 2 as the purple outline does not extend right along Ballina Street but does make reference to underground power so I trust the power will go the length of the cbd	7/3/2020 2:03 PM
24	Nil	7/3/2020 7:58 AM
25	THE TOILET IN ROSS PARK SHOULD BE REMOVED	7/2/2020 11:33 AM
26	I am totally against the installation of a toilet block on our Southern Boundary. It will obstruct what little view we have of the ocean and there is already a public toilet block within a short walk of the park.	7/1/2020 11:35 AM
27	I least like the toilet block in the park, pic no 10. Not necessary and will impact neighbouring apartments, also public toilets are already situated 50m down the road	6/30/2020 8:15 PM
28	Toilet block right next to the apartments	6/30/2020 3:44 PM
29	the position of the toilet block in Ross Park. it backs directly on to residences in the Beachfront Apartment complex.	6/30/2020 2:44 PM
30	None really,looks good just do it!	6/30/2020 2:14 PM
31	Number 10 on Ross Park. My wife and I own the ground floor apartment 6B in the Lennox Beachfront complex - we are moving in in January - and have just received the new draft plans for Ross Park. I'm concerned about the construction of picnic tables and toilets right	6/29/2020 6:57 PM

Lennox Village Vision draft concept plan

next to our courtyard and am seeking some further specs for them... Our main concerns are the proximity to our yard (added noise, smell, etc) and the affect it may have on our view. We are planning to build a slightly raised deck in our yard so that we can sit and watch the ocean (this view would be out over the park) and are worried that this outlook will be affected. We are hoping that at this stage of the planning you will be able to rejig it so that the new developments will not impact so directly on the neighbouring residents like ourselves. As it is quite a large space we are hoping the council will reconsider the position and move these constructions further away from the apartments.

32	Number 10 on the Ross Park design - the position of toilets and picnic shelters. These will back right onto 2 ground floor apartments of the 77-83 Beachfront Complex. We anticipate this would add extra noise and smell. People would most likely use the picnic tables at night and toilets flushing at all hours. We are the owners of one of those apartments... there is so much space in that park where you could put these facilities that wouldn't impact us as local owners. We have a 1 year old son and are really looking forward to making this place our home, please can you reconsider the location of the toilets.. perhaps closer to the beachside or the shop side... here they wouldn't impact local residents like ourselves.	6/29/2020 6:41 PM
33	loss of parking in Rutherford street adjacent to park	6/29/2020 4:21 PM
34	the amount of money, complete over the top excessive amount	6/29/2020 4:01 PM
35	Elimination of the picnic shed - it is a good social area - shady - we always head there or as a meeting place for the family	6/28/2020 11:27 AM
36	Not realising the 'One way street'!	6/28/2020 9:53 AM
37	No pedestrian crossing or speed hump at the skatepark . Children will not walk the extra distance to the other 2 crossing	6/27/2020 2:51 AM
38	could get rid of more parking (there will never be enough parks so it should be a pedestrian area)	6/26/2020 6:09 PM
39	All of it. Stop the development. It is ruination.	6/26/2020 5:11 PM
40	reducing parking spaces in Ballina St with pop out	6/25/2020 12:05 PM
41	Lack of mature tree planting	6/24/2020 8:39 PM
42	taking away parking at Ross Park in the laneway - the most used parking spots in the whole of Lennox Head	6/24/2020 3:35 PM
43	Trees blocking parking outside of Lennox motors	6/24/2020 11:43 AM
44	You need to be careful about overplanting and then the council not maintaining plants as elsewhere	6/22/2020 3:56 PM
45	this is being done with out the peoples approval	6/20/2020 6:34 PM
46	Park Lane needs attention - traffic hazard as drivers "by-pass" main street	6/20/2020 7:58 AM
47	The possible impact on Rayner lane	6/19/2020 3:50 PM
48	Removal of parking on the northern side of Rayner Lane so only bikes & 2 Disabled parking spots are proposed.	6/19/2020 11:55 AM
49	More seating is required at the southern end of Ballina St	6/18/2020 5:16 PM
50	I feel that the parking issue has not been fully addressed	6/17/2020 1:59 PM
51	Ross Park , Rayner lane car park spaces going from 8 to two disabled parallel parks !	6/16/2020 4:59 PM
52	Focus on the climate and green aspects seemed to me that this should be the last point	6/15/2020 7:29 PM
53	Needs greater emphasis on revitalising/cleaning up rear of shops and residences in Park Lane. Current state of them is not a good welcome to Lennox (eyesores)	6/15/2020 6:57 PM
54	Cost	6/15/2020 6:30 PM
55	Removal of all weather large group picnic facilities in both Lennox and Ross Parks and the bus stop shelter does nor provide adequate weather protection for commuters	6/15/2020 5:07 PM
56	MORE PARKING IS DESPERATELY REQUIRED	6/15/2020 4:20 PM
57	size of playground	6/15/2020 2:56 PM
58	Removal of car spaces next to Ross park is ridiculous	6/15/2020 2:13 PM

8.5 Lennox Village Vision - Draft Concept Plan

Lennox Village Vision draft concept plan

59	No fence around park	6/14/2020 8:16 PM
60	The playground needs to be bigger with more activities for the kids. The new Byron Park (near Rails) is fabulous. Two slides, lots of nature play but very safe as well. This plan is a great start but given how many families use it, there's not enough variation for the kids.	6/14/2020 7:45 PM
61	Road design will still lead through traffic down the main street rather than encourage diversion down Park Lane.	6/14/2020 6:03 PM
62	I think there should be more focus on pedestrians	6/14/2020 3:34 PM
63	More trees needed	6/14/2020 1:24 PM
64	Car parks near Ross Park going-because I sometimes have 4 grandchildren in tow Togo to park	6/14/2020 12:24 PM
65	Timber walkway in Ross Park (seems a bit excessive)	6/14/2020 12:24 PM
66	Missing some fences around playground	6/14/2020 9:34 AM
67	Removal of 90% of car spaces	6/14/2020 7:24 AM
68	Playground lacking	6/14/2020 5:27 AM
69	Taking the charm away from the village	6/13/2020 6:16 PM
70	Removal of any trees, it's ridiculous	6/13/2020 2:19 PM
71	removal of the historical picnic shelter	6/13/2020 1:52 PM
72	Lack of Parking	6/13/2020 12:45 PM
73	None	6/12/2020 11:17 PM
74	Trees that may look good but may damage the road causing ongoing costs	6/12/2020 9:39 PM
75	Ross park remains open not gated /screened which I feel is dangerous so close to road for you get children.	6/12/2020 2:56 PM

Lennox Village Vision draft concept plan

#	2.	DATE
1	Lack of colour I know the tiles on the community centre were a fail but the colours the soft blue and the golden sand colour were such great colours for our beach it would be nice if we could have a sprinkling of these beach colours in our town.	7/10/2020 10:10 PM
2	No parking on Rayner lane except for disable parking	7/10/2020 4:57 PM
3	Ross Park: Businesses adjacent to Ross Park will be disadvantaged by position of toilet block	7/10/2020 2:57 PM
4	Civil works and electricity works as part of the same budget and project	7/10/2020 12:09 PM
5	Buses are environmentally dirty and should not be in the village centre. There should be a new transit station set up on a portion of land where the current RFS is situated.	7/9/2020 4:31 PM
6	Taking away parking spots near Ross park these are premium car parks and should be retained.	7/9/2020 10:21 AM
7	plan to remove car parking in rayners lane	7/9/2020 7:08 AM
8	\$455k in Stage 1 is peanuts - ALL of Ross Park should be done at once, surely Council can find \$720k	7/8/2020 7:30 PM
9	Lack of provision for Rayner Lane pedestrian movement	7/8/2020 5:04 PM
10	the toilet block in Ross Park should be done with Stage 1	7/8/2020 4:31 PM
11	The main pedestrian zone/flush surface could extend further on either side	7/8/2020 1:23 PM
12	The shelter shed is a wonderful iconic image associated with Lennox Head and is strongly linked to it's heritage. It would be disappointing to see it removed.	7/8/2020 1:05 PM
13	Uniformity – can the bollards and structures have some sort of uniformity throughout the town instead of a mish-mash of stuff?	7/8/2020 12:51 PM
14	Toilets should be placed horizontally not vertically	7/8/2020 6:24 AM
15	Sandstone blocks don't tend to fit our environment- ? recycled timber benches.	7/7/2020 8:10 PM
16	Placement of toilet block in Ross Park only metres from a residential building and children's playground. There is space near the Raynor Lane side of the park where it is not on a private boundary.	7/7/2020 4:01 PM
17	The Ross park loo design- its a bog standard design at the entry of the heart of the village. Can we arty it up plz. Maybe continue the turtle them from the playground? While we're there - the ones at Main Beach could have a simple funky up too.up a bit too.	7/6/2020 1:52 PM
18	Pathways in Lennox Park do not extend along the beachfront for easy access for people with mobility devices	7/3/2020 2:03 PM
19	It is an inappropriate building for such a small park and will take away the amenity of the free open space picnicking area. The area that is designated for the toilet block is very popular with picnickers (especially Birthday parties) under the shelter of our boundary fence.	7/1/2020 11:35 AM
20	Not enough trees ... need more at the dudes of the toad or in the middle ... like Avalon beach And Newport Beach towns or Manly (northern Beaches, Sydney) . Larger palms (skinny base and foliage that does not block car vision.. can be done ..	6/30/2020 3:44 PM
21	no requirement for toilet in Ross park one at the bus stop	6/29/2020 4:21 PM
22	What a pathetic park for children to enjoy - A park without swi ngs ngs - a carousel, a slide and some rope - not much of a park ngs- ngs -	6/28/2020 11:27 AM
23	Lighting design missing ?	6/27/2020 2:51 AM
24	more landscaped greenery and trees and street trees for adjoining areas - eg stewart street	6/26/2020 6:09 PM
25	Raised roadway in front of post office will only encourage pedestrians to saunter across the road and impede traffic flow	6/25/2020 12:05 PM
26	Removal of play equipment that actually gets kids moving!	6/24/2020 8:39 PM
27	more gardens and trees needed	6/24/2020 3:35 PM
28	You need to be careful not to lose car parks, council already hammers developers for car parks	6/22/2020 3:56 PM

8.5 Lennox Village Vision - Draft Concept Plan

Lennox Village Vision draft concept plan

29	Lack of traffic management at corner of Park Lane and Ballina St eg mini roundabout	6/18/2020 5:16 PM
30	I own the point cafe the car parks there are full all day everyday not necessarily for the cafe but for the town I think it will have a huge impact and major mistake for businesses in the CBDnow that there will be a woolies Over in epic	6/16/2020 4:59 PM
31	I can't really see how it is maximising climate change mitigation (Place Direction 1)	6/15/2020 6:57 PM
32	Disruption due to staged works over many years	6/15/2020 6:30 PM
33	Significant traffic concerns due to lack of additional road offset for bus parking at new bus stop	6/15/2020 5:07 PM
34	Extra garbage bins needed on the eastern side of Park Lane	6/15/2020 4:20 PM
35	No fence or barriers included for safety of children on ballina street side of Ross park	6/15/2020 2:13 PM
36	Potential lack of consideration to business frontage on Park Lane.	6/14/2020 6:03 PM
37	There should be more crossings	6/14/2020 3:34 PM
38	Not enough trees and gardens - makes a place look so much more inviting	6/14/2020 12:24 PM
39	No really bike friendly	6/14/2020 9:34 AM
40	Removal of shade structure	6/14/2020 7:24 AM
41	Less parking in village	6/14/2020 5:27 AM
42	Becoming more like Noosa	6/13/2020 6:16 PM
43	no provision for doing up the picnic shelter	6/13/2020 1:52 PM
44	Wasteful	6/13/2020 12:45 PM
45	Cost of project...in all likelihood there will be budget blowout.	6/12/2020 9:39 PM
46	BBQ missing from any of the design would be very valuable in either road park or Lennox park.	6/12/2020 2:56 PM

Lennox Village Vision draft concept plan

#	3.	DATE
1	No parking opposite Mi Thai and In The Pink.	7/10/2020 4:57 PM
2	No consideration for outdoor exercise equipment in the parks	7/10/2020 12:09 PM
3	Where is the Main Community Notice Board currently adjoining Ross Park	7/9/2020 4:31 PM
4	too many trees to be planted	7/9/2020 7:08 AM
5	Insufficient planting in Lennox Park - more please	7/8/2020 7:30 PM
6	Lack of provision for reduction in Rayner Lane vehicle traffic	7/8/2020 5:04 PM
7	removal of all car parks on southern border of Ross Park other than disabled	7/8/2020 4:31 PM
8	The pedestrian crossings on Ross Lane are too narrow	7/8/2020 1:23 PM
9	Community Centre still the eyesore of the town	7/8/2020 12:51 PM
10	Prefer even fewer car spaces and more widened areas of footpath for outdoor eating.	7/7/2020 8:10 PM
11	Two toilets in Ross Park would be preferable	7/3/2020 2:03 PM
12	It will encourage all sorts of anti-social activities after hours. We spent years calling the police many times a night to attend to anti-social behaviour.	7/1/2020 11:35 AM
13	less beach parking avail, more req'd at boat channel!	6/29/2020 4:21 PM
14	A toilet block right on the boundary fence where people stay	6/28/2020 11:27 AM
15	Bike rack type-	6/27/2020 2:51 AM
16	It would be good to It would be great to make the whole street a pedestrian/dining area or corso and do a car park near the community centre	6/26/2020 6:09 PM
17	Pop outs with trees would appear to block view of oncoming traffic	6/25/2020 12:05 PM
18	Removal of all shade structures	6/24/2020 8:39 PM
19	Do not overly capitalise on expensive items, the council needs to try to think like the private sector does and be frugal (e.g. wooden decks and too many planted garden beds)	6/22/2020 3:56 PM
20	Lack of traffic management at corner of Byron St and Ballina St such as a mini roundabout	6/18/2020 5:16 PM
21	I've been taking pictures each morning and have a picture of a bicycle stand option that is in Byron near the surf club	6/16/2020 4:59 PM
22	The amount of time it will take to implement	6/15/2020 6:57 PM
23	Sanitisation of community facilities	6/15/2020 6:30 PM
24	Reduction in already inadequate parking spaces and flawed assessment process of the parking survey and its conclusions	6/15/2020 5:07 PM
25	Cyclists in LH get a raw deal in comparison to cyclists in Ballinac	6/15/2020 4:20 PM
26	The carousel was a fundraised item for the park so why isn't more money being put into infrastructure for children's play equipment in Ross park?	6/15/2020 2:13 PM
27	Shame the one way trial did not get full opportunity for community understanding and Council's premature trial cancellation.	6/14/2020 6:03 PM
28	Are there speed humps? Cars speed through this area even when it says 40	6/14/2020 3:34 PM
29	More playground equipment and seating at Ross Park needed as I go there most days and it's always packed	6/14/2020 12:24 PM
30	Removal of regular play equipment	6/14/2020 7:24 AM
31	I don't see what is wrong with what is already there	6/14/2020 5:27 AM
32	Do we really need to spend the money?	6/13/2020 6:16 PM
33	toilet in Ross Park instead of more playground equipment	6/13/2020 1:52 PM
34	Not enough focus on natural environment. Look to be so fake and perfect e.g those bloody curvy suits around bushes	6/13/2020 12:45 PM
35	Rate increase to pay for no 2!	6/12/2020 9:39 PM

8.5 Lennox Village Vision - Draft Concept Plan

Lennox Village Vision draft concept plan

#	4.	DATE
1	No specifics on materials used or improvements made, which leaves no commitment to following through with a quality upgrade	7/10/2020 12:09 PM
2	Where are the water features to cool the village environment	7/9/2020 4:31 PM
3	morning sunshine to be lost	7/9/2020 7:08 AM
4	Delay of toilet in Ross Park - make a mess once and do all the work then	7/8/2020 7:30 PM
5	Reduction in width of main street for traffic	7/8/2020 5:04 PM
6	The two-way street remains in place	7/8/2020 1:23 PM
7	concerned re staging- will trees be planted asap to allow growth including community centre area.	7/7/2020 8:10 PM
8	Clarification is required on type of lighting so it is no impact on marine life	7/3/2020 2:03 PM
9	parking in pk lane at field should be angled,90deg dangerous	6/29/2020 4:21 PM
10	We always use the picnic shed - just clean it up	6/28/2020 11:27 AM
11	"pedestrian priority crossing" is very confusing - is it a crossing or not??	6/25/2020 12:05 PM
12	Also the tree line where the mechanics is I really do not understand I think this would be extremely dangerous and creating heaps of blind spots.	6/16/2020 4:59 PM
13	I like that the plan seeks to balance pedestrians and cars but I still think that people will want to park in Park Lane or Ballina Street and will spend a lot of time driving around to find a park (doing the loop) - which is not good for the environment or people's patience	6/15/2020 6:57 PM
14	Making our village look like an aged care facility	6/15/2020 6:30 PM
15	Poor accessibility to picnic shelters in Lennox Park And To other park seating in both parks - no level paved pathways for wheelchair users and for those with reduced mobility	6/15/2020 5:07 PM
16	Ross park needs extra swings-have you seen the park on a busy day?	6/15/2020 2:13 PM
17	Disruption to businesses while in construction	6/13/2020 6:16 PM
18	Ross Park not child friendly enough.	6/13/2020 1:52 PM
#	5.	DATE
1	Lack of provision for improving the open area on the south east side of Williams Reserve. Williams Reserve requires a Management Plan	7/9/2020 4:31 PM
2	trees planted in front of existing business	7/9/2020 7:08 AM
3	Insufficient planting in Ross Park - more please	7/8/2020 7:30 PM
4	Need more safe street crossings Ballina Street	7/8/2020 5:04 PM
5	40km hour is too fast for traffic to travel through the Main Street	7/8/2020 1:23 PM
6	No indication as to whether gutters will 'layback' as in some areas of the cbd so people can park their cars closer to kerbs	7/3/2020 2:03 PM
7	businesses should have parks between Ballina st and Pk Lane	6/29/2020 4:21 PM
8	Carousel, slide and rope things- no swings no excitement	6/28/2020 11:27 AM
9	the whole plan looks like it will make driving down Ballina St an exercise in dodging pedestrians	6/25/2020 12:05 PM
10	It has been causing me much stress	6/16/2020 4:59 PM
11	Lack of growth in youthful & modern small retail/services & vibrant business	6/15/2020 6:30 PM
12	Inadequate "wheelchair" parking spaces InBallina street especially.	6/15/2020 5:07 PM
13	Uncertain time span of construction	6/13/2020 6:16 PM

8.5 Lennox Village Vision - Draft Concept Plan

Lennox Village Vision draft concept plan

Q6 Thinking about the concept plan, is there another element you would add that is not already on the plan? If so, why?

Answered: 66 Skipped: 22

8.5 Lennox Village Vision - Draft Concept Plan

Lennox Village Vision draft concept plan

#	RESPONSES	DATE
1	More local indigenous commemoration	7/11/2020 11:06 AM
2	Far and away the thing I would like to see the most is the use of fairy lights in the taller new trees along the Main Street. It brings not just light and beauty but also brings people out strolling the street in the evening to the bars restaurants or the ice cream shop. It adds just a little more life after dark but in a quiet gentle family friendly kind of way.	7/10/2020 10:10 PM
3	Rayner Lane is always a very busy thoroughfare and it should be considered to be closed at the east/west section to through traffic and be only open to local traffic as a two way from the opposite end. Vehicles drive very fast up the lane and is unsafe for pedestrians, children etc.	7/10/2020 8:27 PM
4	The reduced number of car spaces on Rayner lane near Ross Park will have a significant effect on the businesses opposite the park. This will have a negative effect on the Lennox Head village as it will cause people to shop elsewhere, such as Epiq or Ballina as parking will be too difficult. Having only 2 disable car spaces may also cause people to park there illegally, leaving no spaces for people who need them. The Lennox Head village is currently very convenient for shoppers to quickly come and go, without having to find a car park far away. The new concept plan will require people to park far away from their destination, which means they may decide to not shop at all.	7/10/2020 4:57 PM
5	Inclusion of an upgrade to Rayner Lane . Rayner Lane is an important part of the Village Centre concept and should be considered in any proposal. Rayner Lane is a natural pedestrian thoroughfare linking the village to the most used tourist attraction at Lennox which is the walk to the point at Pat Morton Lookout. Point 4 of the feedback priorities requires the rebalance of priority between people and cars to make it safer and more comfortable for all. The concept plan boldly highlights the need for better streets and places for people. It is an anomaly to spend \$10M on upgrading the village to improve the balance and safety between cars and people and ignore Rayner Lane. Traffic and pedestrian flow down Rayner Lane should be addressed as part of the Lennox Village Vision - suggestions are given below.	7/10/2020 3:06 PM
6	Nothing other than the Ross Park issue for me. It is quite concerning. I will most likely no longer eat at The Point Cafe with toilets there. I can always smell them	7/10/2020 2:57 PM
7	The project has been tagged "slow and social costal village". In order to promote this concept and to allow for discouraging cars in the CBD of Lennox I would suggest a number of bike racks be installed. I note from the plan that two car parks are to be removed near the fig tree at around 60 Ballina St. I very strongly request that a bike rack be installed in each of these two spaces to help promote coming into the Village CBD by other than motor vehicle.	7/10/2020 1:57 PM
8	1). Outdoor exercise gym equipment in Lennox Park, around the outskirts of Williams Reserve and along the path leading all the way up to the headland. I think only 10 or 15 stations would be necessary, forming an outdoor circuit for people exercising. There are many bootcamp style groups and outdoor groups that use the town centre, this would form another great element on using and improving the spaces. 2). The little strip of street between Ross Park and the cafe and surf shop. This is an opportunity to do something special, like cobbled streets in London, or stone pathways in Rio. Something unique and original. It is only 50m, but spend the money and do it properly.	7/10/2020 12:09 PM
9	Rayner Lane: My family has owned 6 Rayner Lane (or Pothole Lane as it is known) since 1937. Consequently, we have had many years to observe the lack of attention to the lane and its' surface. I now discover that the lane has not been included in the Lennox Village Vision draft concept plan. My reason for saying it should be included is that the lane is part of that central grid because it provides a get away from the main street for those wanting to proceed south. Because vehicular traffic think they are out of sight of the main street the lane has become a speedway for that quick turn around. In addition, Rayner Lane is very much a pedestrian Lane. Council will say that pedestrian access has been provided in Rutherford Street to join into Ballina Street. The reality is people preference Rayner Lane to get to Ross Park and the centre of the village. Residents and pedestrians with small children are constantly indicating to speedsters to slow down. The short east/west section of Rayner Lane should be closed and incorporated into Ross Park making that entire space a pedestrian area. The remainder of the lane closed made two way just for residents and no general thoroughfare. Many years ago, it was two way and was never a problem. It would be necessary to provide additional turning space taken from Ross Park for the waste collection truck to pick up and return along the lane. This would eliminate the speedsters providing safer conditions for pedestrians who are going to use the lane anyway.	7/10/2020 10:33 AM
10	Water conservation and recycling have been omitted as have water features. In addition underground water storage tanks should be positioned under Lennox Park to collect storm water.	7/9/2020 4:31 PM

Lennox Village Vision draft concept plan

11	The first priority is stated as "Minimise negative impacts on the environment and maximise climate change mitigation". What volume of waste and what carbon footprint is the project goin to produce?	7/9/2020 9:37 AM
12	Pedestrian designated walkway in Rayner Lane from Rutherford Street to Ross Park. Coastal walkway ends and people take quickest route to park rather than use Ballina Street.	7/8/2020 5:04 PM
13	Looks good	7/8/2020 2:29 PM
14	sharing the road space. While the plan has paid attention to safer zones for pedestrians (in particular elderly people and young children) flush surfaces could be further extended and the entire road surface changed between Byron Street and Park Lane entrance at the south end.	7/8/2020 1:23 PM
15	Rayner Lane should be considered in the context of it's current usage and the likely result of growth which will be accelerated by the undertaking of the proposed plan. Rayner Lane is already heavily utilised as a pedestrian access. Increased visitation will naturally increase that. Families extensively use it for this purpose creating a relaxed "village" atmosphere as they stroll it's length. Concurrently, the lane is used as a main thoroughfare for vehicles seeking to exist to the south of the village centre. Many vehicles do not respect the need for safe speeds in such a confined street creating a safety consideration for residents, pedestrians, and other vehicles. Options that could be considered might include: 1. Closure of the street at the end of the east west section of Rayner lane so that carparking opposite the shops in that vicinity would be maintained. Rayner Lane would become a 2 way only "No Through Road" necessitating a turning cul de sac at the northern end to facilitate larger vehicle turning eg. garbage truck. The lane previously operated as a two way street and could suitably do so again if limiting traffic movements. Park Lane is an existing two-way street with an overall wider road corridor and better suited to take the traffic load returning south. OR 2. Rayner Lane remains one way but with a clearly designated entrance at the transition from the east west section to the north south section as being "Residents Only" or "Local Traffic". This would not stop the lane being used as a "rat run" but might at least limit traffic movements on it.	7/8/2020 1:05 PM
16	I would like to see even more greening of spaces. Lismore City has much more greenery in its public spaces (not just parks) than Lennox or Ballina. The more greenery, the better (without impeding movement of pedestrians/cars etc)	7/8/2020 12:51 PM
17	The notice board in Ross Park which has been displaying information on the origin of Lennox Village must be retained in that Park or a central position. It's use now to display the LVV plans shows how useful it is.	7/8/2020 12:24 PM
18	More sun shelters, more fresh water showers and drinkwater stations, solar device charging stations in shelters.	7/8/2020 6:24 AM
19	Gentle attractive street lighting. Avoid use of Neon signage anywhere in Lennox Head-can this be mandated? Ongoing maintenance of gardens-we will need an abundance of new jobs and this would be useful work bringing happiness to many.	7/7/2020 8:10 PM
20	Parking	7/7/2020 4:01 PM
21	I am disapointed that no further consideration has been given to Rayner Lane. This lane way is heavily utilised by large numbers of parents, children and visitors to Lennox as the conduit from the town centre to the coastal walkway and on to The Point Lookout. The surface of the laneway has not received attention in 30 years and now presents as a hazard to the many mothers with prams and children on small bikes etc. For a relatively modest sum this could be rectified and this linkage lane would present as an appropriate asset to the town and the tourist sector. The installation of traffic calming devices would also enhance the first stage experience of the Coast Walk ..	7/7/2020 1:58 PM
22	cool loos inspo http://www.designcurial.com/news/the-10-best-public-toilet-designs-of-2017-5971621/9 https://architecturenz.co.nz/articles/hobsonville-toilet-block/ https://www.nzherald.co.nz/lifestyle/news/article.cfm?c_id=6&objectid=12150639	7/6/2020 1:52 PM
23	. Flagpoles for promotional and awareness purposes at northern and southern gateways. . Larger or duplicate signage in Ross Park so 1. the existing heritage sign remains, 2. a comprehensive public notice sign with a town map including emergency contacts, 3.sign with details of community groups, their meeting schedules and contacts and 4.space for notices by the public and/or community organisations and/or Council to be posted.	7/3/2020 2:03 PM
24	A continuation of the coastal walking path, along the beach edge to the Surf Club	7/3/2020 7:58 AM
25	THERE SHOULD BE A FEATURE WALL ALONG THE FULL LENGTH OF ROSS PARK NORTHERN END OF PARK - THIS WALL COULD DEPICT CULTURAL ELEMENTS OF	7/2/2020 11:33 AM

8.5 Lennox Village Vision - Draft Concept Plan

Lennox Village Vision draft concept plan

THE LOCAL AREA

26	Where else can the toilet block be placed ? Maybe on the other side of park next to Rayner lane on the north of the park, or along Ballina St separating the park and providing a safety barrier for the kids from the busy street and allowing more accessibility of the toilets for use by all people using the village .	6/30/2020 3:44 PM
27	Perhaps options for parking outside of village and improve bike path to access from the broader town.	6/30/2020 2:14 PM
28	Too much emphasis on on business and chamber of commerce preferences. Chamber of commerce does not dictate policy for residents and rate payers in general	6/29/2020 4:21 PM
29	scrap the plan	6/29/2020 4:01 PM
30	Please get the work done ASAP I want to be around to see it completed. Please complete plan - not half done.	6/28/2020 11:27 AM
31	The 'One way street'! In my opinion the trial was designed for the project to fail. Some vested interest, I suspect. A one month period is by far too short to be conclusive; further, the idea could have been modified and improved, by not feeding back through the side lane but run it in the same direction. Further, make the entire stretch of Ballina street in the centre either a shared zone or have a speed limit of 10km/h. That is the future. What is done now is a bit of 'lipstick and make-up', but in no way a future oriented change to this lovely town centre. Lots of room for improvement!	6/28/2020 9:53 AM
32	Street lighting should use smart dimmable control and possibly colour changing for different times of the night or year. Philips Lighting make smart street lights . Dimming after certain times at night plus possible movement sensors that ramp the lighting back up when humans are detected . Bike rack design is important, a simple rail type that allows bike to be hung from their seat is much better and safer . The paintwork does not get damaged when hung by seat (triathlons use this style . The rail type bike rack also acts as a stretching device and barrier .	6/27/2020 2:51 AM
33	Commit to becoming Australia's first 'Dark Sky Community'. Some council areas around the world are committing to lowering voltage and enforcing that all lighting must be shielded and not bleed outside the property boundaries. This is so we can see our stars and distant galaxies, and also for wildlife/ animals. The requirement is that all lighting is sheilded and low level and considered in all developments (especially petrol stations etc). Refer to the Dripping Springs as an example of an outdoor lighting ordinance eg. replacing all council-owned lighting over a 5 year period and having regulations for developers. An ordinance can limit the total amount of lighting on a lumens per metre basis, so that no one is allowed to 'trespass' their light.	6/26/2020 6:09 PM
34	Cancel all of it. We are headed into massive world recession anyway and the developers will lose their shirts, but why ruin the beauty of lennox in the meantime.	6/26/2020 5:11 PM
35	designated pedestrian crossings	6/25/2020 12:05 PM
36	Please create some shaded structures for people to enjoy the views and their lunches! With out blistering summers we should be creating more shaded areas where people can sit and relax.	6/24/2020 8:39 PM
37	more parking in laneway at Ross Park	6/24/2020 3:35 PM
38	I 6foot high brick fence on the boundry as the locals partying in the park late of a night are out of control and it disturbs the peace of the people staying in the Beachfront apartments and they constantly call the police to move them on.	6/24/2020 10:22 AM
39	No pretty good	6/22/2020 3:56 PM
40	More attention to redesigning Park Lane - for cars and pedestrians - too dangerous in busy times	6/20/2020 7:58 AM
41	Currently people park along Rayner Lane parallel to the beach on the left hand side which restricts entry into our property at 13 Rayner Lane (Lennox on the Beach). As there are fewer parking places proposed for the northern side of Rayner Lane opposite the Point Cafe, I fear this issue will be made worse. There is already a yellow line prohibiting parking on the right hand side of the lane. I would like to see no parking on both sides of the lane parallel to the beach for at least 10 properties to prevent people parking in the street obscuring entry to our and neighboring properties. I'd be happy to attend the site with a representative to explain further.	6/19/2020 11:55 AM
42	Intersections at Park Lane and Byron Road will remain congested and busy - better served	6/18/2020 5:16 PM

Lennox Village Vision draft concept plan

by mini roundabout to maintain traffic flow and also to slow traffic

43	I would suggest that Council have a long hard look at re-developing the rugby/sports field in Park Lane ..it would solve ALL the parking problems, and create more retail areas, enabling the foreshore to be better utilised	6/17/2020 1:59 PM
44	no	6/16/2020 9:44 PM
45	Looking for ways that the footpaths are to be improved. Will land lords have to pay and how will that work. This is a key area to get the whole village look consistent.	6/15/2020 7:29 PM
46	Using similar design features to those implemented recently at Lake Ainsworth as they are very nice and it would provide a linkage between the areas. How does the plan take account of population growth projections and resultant pressures on the village centre? Is it future proof? Is it flexible enough?	6/15/2020 6:57 PM
47	Greening the rest of the village ie the housing area is missing. The village streetscape has a barren appearance. Council should introduce incentives to plant appropriate trees on the nature strip ie salt tolerant, create shading and absorb greenhouse gases. There should be a notice near the bike storage area visible to pedestrians reminding motorists of the 1.5 m and 1 m minimum passing distance laws. Such notices are totally absent in the Ballina Shire, although the law was introduced in 2018 and other LGA's are far more pro active in helping to protect cyclists and encourage active transport.	6/15/2020 6:54 PM
48	Saving money for ratepayers!	6/15/2020 6:30 PM
49	Detailed plan of the proposed amenities block in Lennox Park and The new single toilet in Ross Park - the current plan does not indicate if will these be accessible and code compliant for for wheelchair users and others with reduced mobility.	6/15/2020 5:07 PM
50	We all care about the environment BUT you are well aware of the flood of people buying homes in the new subdivisions out the back of LH. These people can't walk to the Village centre, there is no public transport, the council needs to create more parking around Williams Reserve urgently. It is a fact of life that more and more cars are arriving in LH every day. For some reason Council thinks business owners in Ballina Street should be responsible for, and provide parking. That is not realistic.	6/15/2020 4:20 PM
51	A viewing deck and platform with rail looking out to the ocean at Lennox Park just like there is proposed for Ross Park	6/15/2020 2:56 PM
52	Park fencing, several times my children run for the roads, you cannot relax	6/14/2020 8:16 PM
53	Roundabouts at the Park Lane/Ballina Street intersection, and Park Lane/ Byron Street intersection to help divert traffic away from the main street and reduce traffic congestion. At present the give way intersections on each end of Park Lane and Byron Street/Ballina Street encourages through traffic along Ballina Street.	6/14/2020 6:03 PM
54	Are there speed humps? Cars speed through this area even when it states 40 km. There needs more pedestrian crossings	6/14/2020 3:34 PM
55	Yes, is it possible to add some low level gym equipment near the children's playground that adults can use, esp older people. I've seen some great examples in Dalby. Or put a little seniors gym park somewhere to encourage activity while gazing out to sea or minding the grand kids.	6/14/2020 1:55 PM
56	More playground equipment at Ross Park and more seating	6/14/2020 12:24 PM
57	I noticed lemon myrtle as one of the varieties of native street trees. It would be great to see more, such as midyim berry, lemon aspen, sandpaper fig, native peanut, davidsons plums or even macadamias!	6/14/2020 12:24 PM
58	A covered space which would allowed outside group exercising for any weather and concert. More bike lanes and bike parkings Solar system on toilet blocks and picnic shelters.	6/14/2020 9:34 AM
59	See #7	6/14/2020 7:24 AM
60	Bigger playground as there is already plenty of parkland along the beach	6/14/2020 5:27 AM
61	Add more car parks A clear crossing out the front of the park to cross Ballina street	6/13/2020 6:16 PM
62	No	6/13/2020 3:22 PM
63	Value and keep the historical picnic shelter which is a real link to times and generations past. Replace the interior with tessellated tiles and appropriate furniture.	6/13/2020 1:52 PM
64	Yeah more parking away from from the main village and do less to the village. In tourist	6/13/2020 12:45 PM

8.5 Lennox Village Vision - Draft Concept Plan

Lennox Village Vision draft concept plan

holidays season and more recently with lots of new people moving to the area parking in lennox has been a shitstorm. I often go down spending 15 minutes trying to find a park only to settle on the street down near the bowling club. Another manifestation of this problem is sharpes carpark. Used to be good. Now it is way too overcrowded. Possibly make tourists park in the new parking area on up at skennars

65	More child play areas , covered .	6/12/2020 11:17 PM
66	As above bbq in either road park or Lennox park	6/12/2020 2:56 PM

8.5 Lennox Village Vision - Draft Concept Plan

Lennox Village Vision draft concept plan

Q7 Have you got any other ideas or suggestions (not already mentioned) to improve the draft concept plan?

Answered: 51 Skipped: 37

8.5 Lennox Village Vision - Draft Concept Plan

Lennox Village Vision draft concept plan

#	RESPONSES	DATE
1	Basic Fitness equipment (Chin up bars,	7/11/2020 11:06 AM
2	YEs it would be great if there were a couple of adult swings too not kids swings sitting in amongst the kids playground but there could be something like a wooden shade shelter with a timber porch swing suspended from it For parents watching their kids At the park. But not just for parents one or two more for the other grown ups further north on the foreshore at Lennox Park another adult bench/porch swing so you can look out at the surf from the swing that would be very cool. I would also have some seating along Park lane on the edge of Williams Reserve under the proposed trees there as well and a table or two near the skate park.	7/10/2020 10:10 PM
3	The shelter beside the present toilet block is to be removed and replaced by a new structure. The present shelter provides considerable cover from both bad and hot weather for people to enjoy a picnic lunch by the sea. Most importantly it provides a much needed amenity for bus loads of disabled and elderly people who regularly come on a day outing and use the shelter. It is very important that the new structure caters for such needy groups in terms of size and appropriate shade/weather cover.	7/10/2020 8:27 PM
4	Reducing car parks on Rayner lane near Ross Park will have a big impact on the businesses operating opposite the park and the surrounding shops. This will negatively effect the Lennox village because people won't be able to find a car park and will shop at Epiq or Ballina instead. People shop at the Lennox village because it is very convenient and easy. If car spaces are taken away from the shopping strip, this will require people to park at Park Lane and walk all the way around. Many people would prefer to shop elsewhere if this current plan goes ahead.	7/10/2020 5:05 PM
5	Inclusion of Rayner Lane into the proposal: Designation of a clear pedestrian path along Rayner Lane. Improved paving along Rayner Lane rather than the current pot-holed mess. The current road is unsightly and dangerous especially for pedestrians later at night. Reduced speed limit to below 20 km. Cars and trucks currently race up the Lane which is clearly a safety issue. There is currently no clear speed signage! There should be no parking in the street. Cars dodging around parked cars and pedestrians is a clear accident waiting to happen. It seems inappropriate to propose improving the safety and comfort of pedestrians in the Lennox Village without including Rayner Lane.	7/10/2020 3:06 PM
6	Maybe more tuckeroos as street planting. They are very permanent and hardy. They withstand severe cutting back when needed. Lomandras as underplanting	7/10/2020 2:57 PM
7	Plenty of bike racks.	7/10/2020 1:57 PM
8	Yes. You need to completely separate the electricity underground project from the Parks, Furniture, public space beautification and usability. The elec works are \$6 or \$7mil and will run over budget, guaranteed. You will then take money from the Parks, Furniture and space improvements to fund the shortfall. It always happens. And do this all on the cheap leaving another wasted opportunity. A civil company that someone knows in council will be awarded the project which will run over budget and everything else will be done on the cheap. Like the stairs up Lennox headland, such a wasted opportunity to do something nicer (look at North Straddie Gorge walk for inspiration). It all sounds great, yet the whole concept is being sold on the things Lennox town wants and needs. Yet it will be interesting if this is ever achieved or if it has been unrealistically budgeted and cuts then need to be made leaving an average result.	7/10/2020 12:09 PM
9	New Lennox Park Shelter: I notice the shelter beside the present toilet block is to be removed and replaced by a new structure. The present shelter provides considerable cover from both bad and extremely hot weather for people to enjoy a picnic lunch by the sea. Most importantly it provides a much needed amenity for bus loads of disabled and elderly people who regularly come on a day outing and stop for a fish and chips lunch in the shelter area where they are altogether. It is very important that the new structure caters for such needy groups in terms of size and appropriate shade/weather cover. Furthermore, even local family groups and council staff use it on their lunch breaks and so they should. The Lennox Head Residents Association previously fought to keep the shelter. Subsequently Council replaced the roof, made some minor changes, painted it and the shelter remained. It continues to provide a necessary function for which it was built.	7/10/2020 10:33 AM
10	The area at the rear of the cricket nets needs to be cleaned up and provision for further passive recreation established.	7/9/2020 4:31 PM
11	Move playground to Ross park near toilets.	7/9/2020 10:21 AM
12	Have the landscape maitnenace crews been consulted? I imagine they spend a significant amount of time (or herbicide) edging the existing bollards in the grass near the oval and the	7/9/2020 9:37 AM

Lennox Village Vision draft concept plan

three edges of the footpath which could have been made one edge.

13	1. Reduce speed limit to 20kms per hour in Rayner Lane. 2. Make vehicle traffic "residents only" in Rayner Lane - 2 way from Rutherford St with boomgate for utilities from Ballina Street near Ross Park. 3. Designate a walkway and bike path in the Lane. The Lane is VERY dangerous in it's current state and with current speed limit. The other streets in the village centre are not as narrow and do not have the high density residential living that Rayner Lane does. The foot and bicycle traffic is immense. PLEASE consider speed limits/ more speed humps at the very least.	7/8/2020 5:04 PM
14	speed limit in the main street reduced to 40kms in keeping with Park Lane	7/8/2020 4:31 PM
15	make all built structures of natural materials; like using the bridge timbers around Shaws Bay for seating Not making it all look the same. Some bespoke aspects keep it looking more natural	7/8/2020 2:29 PM
16	No more sandstone blocks please – they are lovely but do not belong in the area. They have been 'plonked' into the plan in the same way they are at the Lake. Ensure that lighting is sufficient for safety but is low key, uses warm light, and is in accordance with marine safety provisions. Ensure all new areas have dedicated bike lanes/zones. Consider the idea of providing e-bike hire to encourage people who live in the higher parts of the village (Epiq, Pac Pines, Meadows, Greenfield Road and so on) to ride to the village and free up car parks. The devil is in the detail – ensure that the plan specifies details like materials/colour/vegetation species and so on to allow for public comment on these aspects of the plan prior to construction.	7/8/2020 1:23 PM
17	Council needs to ensure that resources are available to maintain all the new plantings. We can't depend solely on volunteers for this. A facility which would enable use of recycled water would be environmentally wise and future proofing.	7/8/2020 12:24 PM
18	Make seating in green areas more engaging in conversation and practical use C shaped instead of S.	7/8/2020 6:24 AM
19	See comments concerning Rayner Lane set out in 6. above	7/7/2020 1:58 PM
20	thinking...	7/6/2020 1:52 PM
21	The Strat Planning team has done a fantastic job in pulling together community feedback over many years, taking suggestions by various groups into account, thorough public advice on plan availability and presenting the copious plans in such an easy-to-read format and even in this rather challenging environment at present, ensured those without computers or appropriate skills have substantial hard copies to access. Into the future it would be of great advantage to pedestrians if a boardwalk might be constructed on the beach linking the two Parks but I am aware this is Crown land and subject to all manner of approvals.	7/3/2020 2:03 PM
22	Not sure if you have a plan in place for the fence along the north border to separate the park - visual, noise, smell etc from the residents next door.	6/30/2020 3:44 PM
23	As above , Address beach it is becoming critical with IE;Epic and residential pressures. Boat channel parking is inadequate. Fencing line along rocks should be uniform IE House at bus stop is unsitely No Toilet for Ross pk Angled parking for Pk lane at Williams reserve Trees east side of Williams reserve Parking to be installed when the Fire shed moves and bigger spaces	6/29/2020 4:21 PM
24	Allow for electricity for festive lighting at each planter box or garden bed . Allow for electricity outlets in the parks for mobile food vans and/or retail vendors and musicians . Ensure that shading doesn't cause grass degradation during winter . Make sure light spill onto beaches is minimal .	6/27/2020 2:51 AM
25	Commit to becoming Australia's first 'Dark Sky Community'. Some council areas around the world are committing to lowering voltage and enforcing that all lighting must be shielded and not bleed outside the property boundaries. This is so we can see our stars and distant galaxies, and also for wildlife/ animals. The requirement is that all lighting is sheilded and low level and considered in all developments (especially petrol stations etc). Refer to the Dripping Springs as an example of an outdoor lighting ordinance eg. replacing all council-owned lighting over a 5 year period and having regulations for developers. An ordinance can limit the total amount of lighting on a lumens per metre basis, so that no one is allowed to 'trespass' their light.	6/26/2020 6:09 PM
26	Yes, cancel it.	6/26/2020 5:11 PM
27	what have they done to the Community centre - I didn't think it could get any uglier - the tiles were the only redeeming feature and it appears they are being covered in metal - it looks more like chimneys than ever	6/25/2020 12:05 PM

8.5 Lennox Village Vision - Draft Concept Plan

Lennox Village Vision draft concept plan

28	Don,t block car repair business off road parking in Byron St with trees as this will have a major impact on its viability. I consider this car repair facility an essential asset to the village.	6/24/2020 11:43 AM
29	Don't over-plant and over-capitalise on items that will need a lot of maintenance as council has a very poor record in maintaining	6/22/2020 3:56 PM
30	Perhaps incorporating family friendly spaces such as Kingscliff beach revamp in the Lennox Park area	6/20/2020 7:58 AM
31	Some great ideas here through the collaboration of locals and professionals	6/18/2020 5:16 PM
32	no	6/16/2020 9:44 PM
33	Signage that shows where key areas are that brings the focus to visitors. Like the park and facilities, parking in Park lane, Sign to show where Club Lennox is (off Byron Street- Like Ballina Golf Club off Coast Road to Ballina), more BBQs for people to use at the park and areas overlooking the sea together with sheltered seats throughout.	6/15/2020 7:29 PM
34	I know it is not part of the plan but I do believe pedestrian amenity in Rayner Lane needs to be addressed.	6/15/2020 6:57 PM
35	Trees at Ross Park and near the beach must be salt tolerant with a broad shading canopy ie not Bangalow palms	6/15/2020 6:54 PM
36	Trees have proven to block retail windows, this experiment failed badly in Byron during the 1990's. Trees also block vision for all drivers. There is no local flavour in this plan; it seems to duplicate the River St upgrade - why? Lennox is a youthful vibrant and highly agile community as evidenced daily by the cyclists, skateboarders and runners who commute from the top roundabout into the village.& back all day. The sample of voices noted in the design of the plan are highly well known individuals with investment in projects & business; little evidence of random selection.	6/15/2020 6:30 PM
37	Lennox Village Vision Plan - Bus Shelter: There is no adequate all weather shelter at the new bus stop. This exposure to the elements during bus waiting periods and transfers on/off is poor service to commuters, both local and visitors. It is also bad for public health and safety. It also does not promote and encourage the use of public transportation. - - Traffic - due to there apparently being no extra offset to the parking width where the bus pulls up (2.2 metres wide as per the parallel street parking areas) and the location of the raised "inter block pedestrian connection" immediately before the bus stopping area, traffic driving south will have very minimal space in the south bound lane to pass the stopped bus, likely leading to south bound cars stopping completely or partially crossing the road to the northbound lane to go around the bus. This will create a traffic and pedestrian hazard, and potentially have traffic during busy times backed up to the corner intersection of Ballina Street. This will especially be the case for larger recreational and work vehicles especially those towing caravans/ trailers, motor homes / vans and delivery trucks. I do not believe this is in accord with "Place Direction" no 4. - I fully support continued 2 way traffic in both Ballina Street and Park Lane. - I fully support the reduction in the speed limit along Park Lane to 40 km per hour , and the speed mitigation features / pedestrian connections being added in Park Lane (although these apparently also reduce the parking spaces in Park Lane). - - Accessibility/ Ease of walking: In Lennox Park, there are no paved, level pathways to the toilet block and Ballina Street footpath from the proposed open sided roofed picnic tables and the "curvilinear pod" seating, nor to any of the other seats overlooking the beach - therefore these picnic/rest areas are not wheelchair accessible or safely accessible for those with reduced mobility, including the elderly. I do not believe this is in accord with "Place Directions " numbers 2,3, 4 and 5. - - In Ross Park there are no paved, level pathways to the "curvilinear pod" seating or "chill out zone" - therefore these picnic areas are not wheelchair accessible or safely accessible for those with reduced mobility. I do not believe this is in accord with "Place Direction" no 2, 3, 4 and 5. - - There also appears to be inadequate provision for wheelchair/ disabled parking - I count only 3 spaces including the 2 at Ross Park for the whole length of Ballina street. The majority of other wheelchair/ disabled parking in Park Lane is at the extreme south end and at the Community Centre at the north end of the lane. There needs to be additional wheelchair/ disabled parking in a more central location along Park Lane, and at least another 2 spaces in Ballina Street. - Amenities: There were no technical or detailed plans available for the new amenities block in Lennox Park or the "Single unisex adaptable toilet" planned for Ross Park. - Will the council be ensuring that both the single toilet facility in Ross Park and at least one of the toilets at Lennox Park will be genuinely wheelchair accessible and user friendly and compliant with the appropriate building standards/ guidelines for wheelchair accessibility use? - - Picnic Shelters: - With the removal of both large undercover all weather group picnic shelters in Ross Park and Lennox Park, there will be no large all weather picnic/ shelter area for groups > 20 people in either park - this is a significant loss to local families, community events/ clubs and organisations, bus tour groups and other organisations reliant on an undercover area for activities/ shelter	6/15/2020 5:07 PM

Lennox Village Vision draft concept plan

in wet, windy or hot sunny conditions. I do not believe the removal of both these picnic shelters is in accord with "Place Directions" no 2,3,4 and 5. - - - Only 2 minimally sheltered picnic tables in each park is grossly inadequate and a huge decrease in public amenities. There appears to have been no adequate on the ground survey of the use of the 2 existing picnic shelters in either park, and destroying these facilities is based on what appears to be a few persons' reported anecdotes of historical use, reported observations of only intermittent use, business owners' wishes for a better view from their premises and aesthetic opinions. - - - If the real concern is the location of the Lennox Park picnic shelter and its ugliness, then the plan designers need to come up with an appropriate alternative design keeping a MINIMUM undercover footprint surface area as the existing shelter. For equitable accessibility the picnic shelter must be located so it is easily linked by paved paths to Ballina Street footpath and the new toilet/ amenities building. - - In Ross Park there needs to be provision for a larger public all weather sheltered picnic /rest area linked by paved paths to the Ballina Street footpath and the new toilet/ play zone. - I have some concerns about the safety of some of the play zone equipment proposed - mainly the low "tightrope" and I think it's a significant loss that there will be no swings for the children. - - Parking: There is a significant reduction in car parking spaces in the central regions 2 and 3 with removal of all but 2 wheelchair/ disabled parking spaces adjacent to Ross Park and removing all front to curb parking bays. Although the Traffic and Parking audit advises on the concept map that there are "a lot of places to park in the village centre that many people may not know about (582 spaces!)" other online parking information I noted in the "Quick Facts" factsheet states there are 489 car spaces currently - - there seems to be a discrepancy of nearly 100 spaces. So what is the actual current total? Are these 100 extra spaces including Stewart and Gibbon streets as "village centre" parking areas? - - Are parking surveys done over only 3 individual days (one Thursday each in December 2019 and January 2020 and one Saturday in January 2020) really a thorough job and indicative of the actual parking / traffic pressures of the village centre? These can vary hugely from day to day due to many factors including the weather, special events, market days, public and school holidays. - - Relying on already outdated (2016 figures) census information for calculating the 1 space: 9 people ratio of available parking spaces to the estimated numbers of Lennox residents (aged between 20 and 79) likely to use them, to come up with the conclusion that there is currently an "oversupply" of spaces is totally inappropriate! - And hasn't even taken into consideration the day trippers and multitudes of non Lennox Head residents that visit to use the town's beaches, lake and village amenities! - Plus I note another discrepancy in the information as elsewhere the ratio is estimated to be 10:1. - - I also wonder why the parking and traffic assessments have not taken into consideration the huge increase in Lennox Head resident population - literally 1000s - that will occur over the next 2-5 years when the multiple residential developments to the south and west of the village are filled? - - Planners need to re-look at the parking spaces and find additional parking to what exists now and not be reducing the spaces due to a flawed calculation leading to the conclusion that there is currently an "oversupply".

38	Large crowds of people visit Williams Reserve for football and cricket matches. in your plan I cannot see garbage bins on the eastern side of Williams Reserve near the halfway line of the football pitch. BINS on the eastern side are desperately needed. How do I know, because people dump their rubbish in the buildings backing only Park Lane. And guess who cleans the mess left behind in Park Lane every Monday. Not Council.	6/15/2020 4:20 PM
39	Urgent repair and upgrade of storm water release Tresise place is forever being flooded by antiquated ideas of storm water. This should be 1st on list before anything else. After the building was erected in main street now housing Krill Elders all their storm water runs down into Tresise Tresise place. Sort this mess out now . This is a priority.	6/15/2020 3:41 PM
40	Given the number of young families in Lennox and the wider area I feel that the size of the natural playground and its elements are token and this could be a real icon for our town. The natural playgrounds around Australia in towns of around the same size are spectacular (especially Yallingup in WA). I think there is a great opportunity to give the young families a place where there is a large scale playground that is safe and modern in its design. People would travel across the region for something like this and local businesses would prosper.	6/15/2020 2:56 PM
41	Has consideration to business street frontage along Park Lane been considered so the main street becomes a 'block' rather than a single road? I think the communities obsession with car parking spaces however would make this less desirable. 90 degree reverse parking on Park Lane (rather than nose first) may make it safer when vehicles are exiting. Pedestrian and bike pathway/ access improvements to the watertower/ North Creek Road/ Hutley Drive area of Lennox is critical to reducing vehicles in Lennox village and needs to be implemented as an extension to this plan.	6/14/2020 6:03 PM
42	Can you please provide the old map of the village so there is a clear visualisation of new and old. And some close up images.	6/14/2020 3:34 PM

8.5 Lennox Village Vision - Draft Concept Plan

Lennox Village Vision draft concept plan

43	No, other than to say thanks for your hard work council. It looks great. Looking forward to seeing an even more beautiful Lennox upon completion.	6/14/2020 12:24 PM
44	Adding fences around playground	6/14/2020 9:34 AM
45	I'm all for upgrading Ross Park it is in dire need of a facelift of any description! However, an alternative playground site could be the larger parkland available to the north adjacent to the (about to be) new and improved existing toilet block. That space could accommodate a larger variety of play equipment for both able and disabled children. Sadly, there is a lack of decent play equipment in the area for kids to be kids. ie.. climbing,sliding, spinning jumping, exploring. Remember?..... The existing shady shed could be upgraded (and safeguarded) for use in our hot summers. Some low attractive practical fencing is all that's needed to separate from the nearby road. This area is exposed to wind. Plant trees!! Easy to provide instant shelter from the prevailing summer northerlies. Ross Park could be upgraded at a much lower costing and become a 'town green'. The better located children's park to the north (next to existing facilities) could be a real showpiece for the masses of tourists and locals alike.	6/14/2020 7:24 AM
46	I would really like to see some sort of aboriginal culture and artwork within the park design. I think it's an extremely important to have in the community.	6/14/2020 12:27 AM
47	No	6/13/2020 6:16 PM
48	No	6/13/2020 3:22 PM
49	Give Ross Park more play equipment, (eg swings!!!) Make is more of a children's space than an adults space. REMOVE unnecessary new toilet in Ross Park	6/13/2020 1:52 PM
50	Yeah contact some long time locals like Mark Waller for advice	6/13/2020 12:45 PM
51	Enclose ross park wirh gate for child safety	6/12/2020 2:56 PM