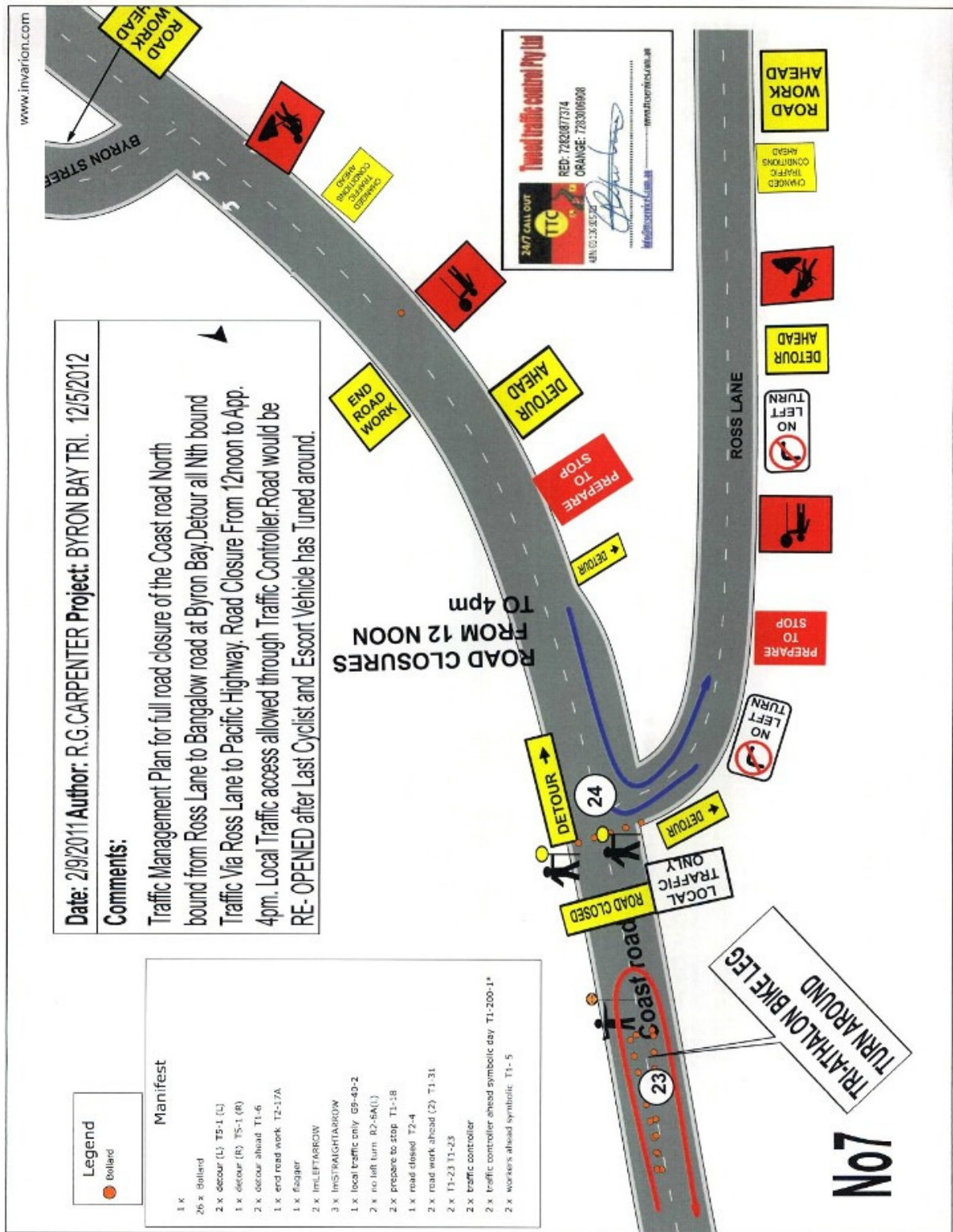


11.1 Local Traffic Committee - October 2011

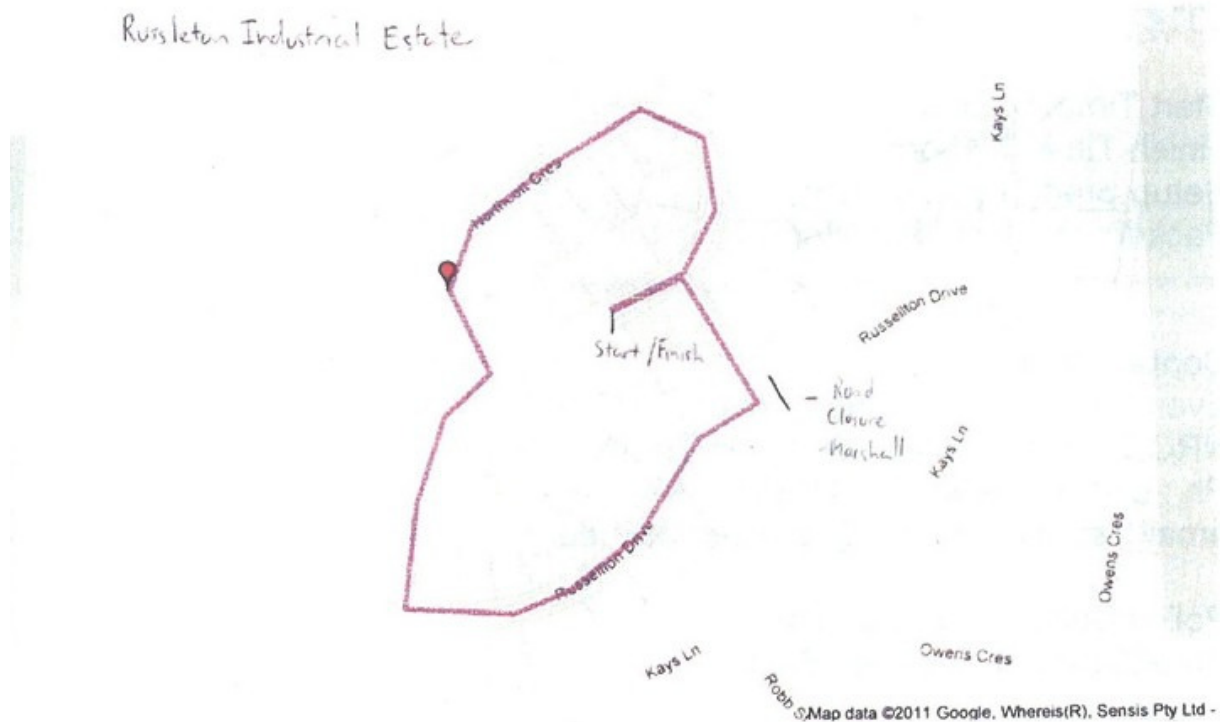
Attachment 1 - Plan - Intersections of Boeing Avenue, Ballina





Traffic and Transport Management

The criteriums are to be held on Northcott Crescent and Russellton Drive, Russellton industrial Estate, Alstonville. The corner of Northcott Crescent and Russellton Drive is to be blocked by road barriers as depicted in the map below.



Marshals

A traffic marshal will be placed at the road closure to control pedestrian flow and to ensure the barricades stay in place to prevent the entry of motor vehicles to the circuit.

Signage

Signs will be erected warning of the road closure and event in progress 30 minutes before the event.

Notification of Residents/Businesses

Subject to Ballina shire council approval conditions, all businesses affected by the road closure will be notified in writing prior to the event. There are no residents in the streets to be closed.

Attachment 4- Traffic Control Plan - Children's Toy Run

