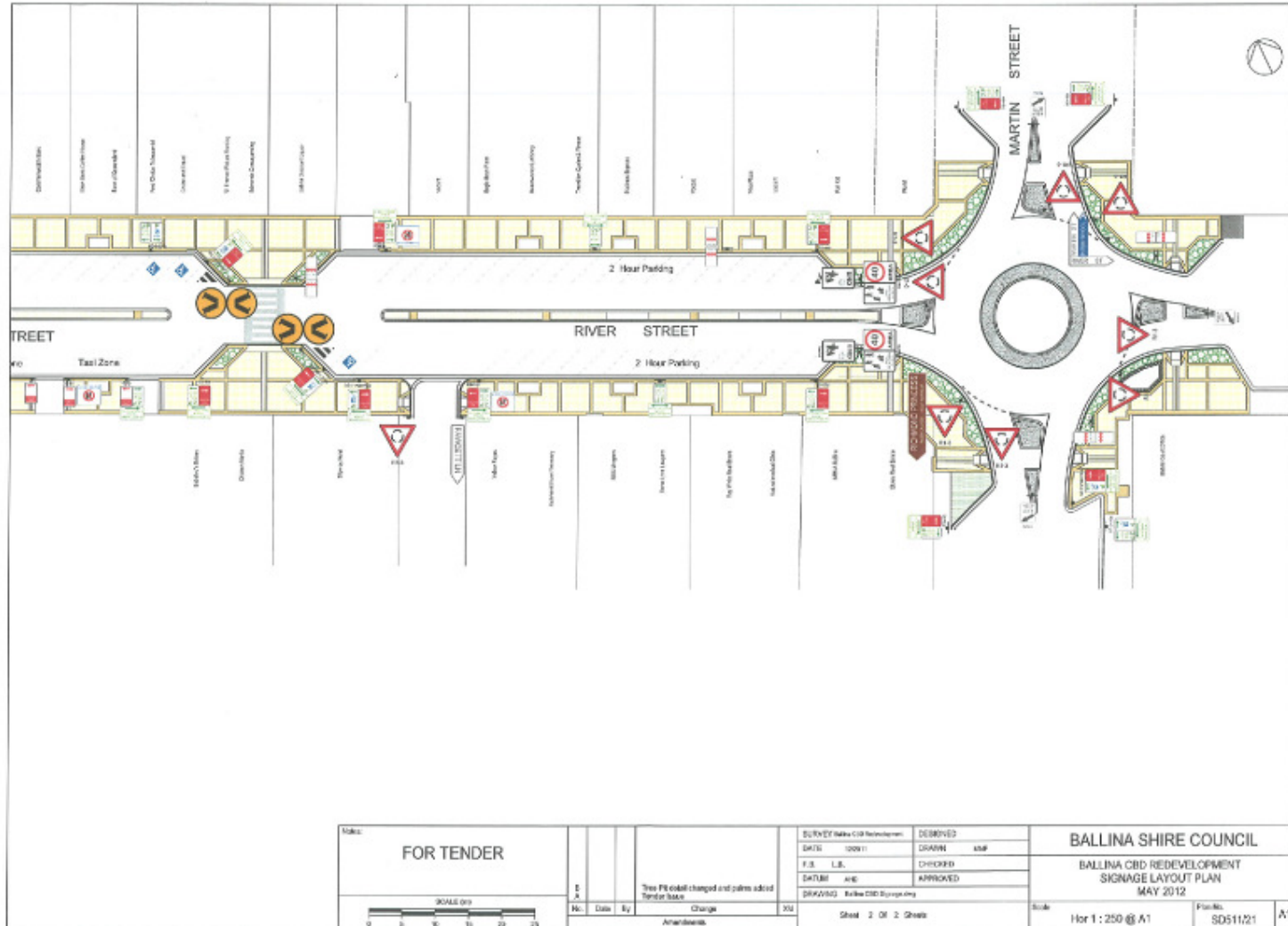
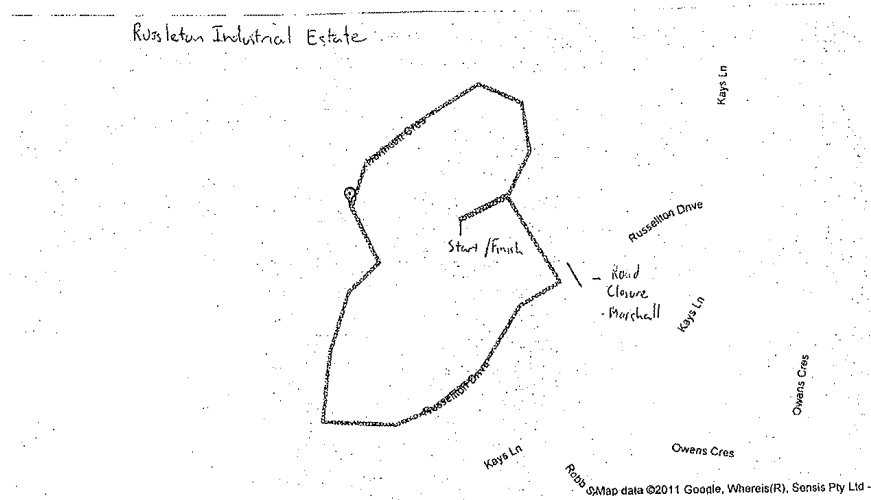


11.3 Local Traffic Committee Report - October 2012.DOC



### Traffic and Transport Management

The criteriums are to be held on Northcott Crescent and Russellton Drive, Russellton industrial Estate, Alstonville. The corner of Northcott Crescent and Russellton Drive is to be blocked by road barriers as depicted in the map below.



### Marshals

A traffic marshal will be placed at the road closure to control pedestrian flow and to ensure the barricades stay in place to prevent the entry of motor vehicles to the circuit.

### Signage

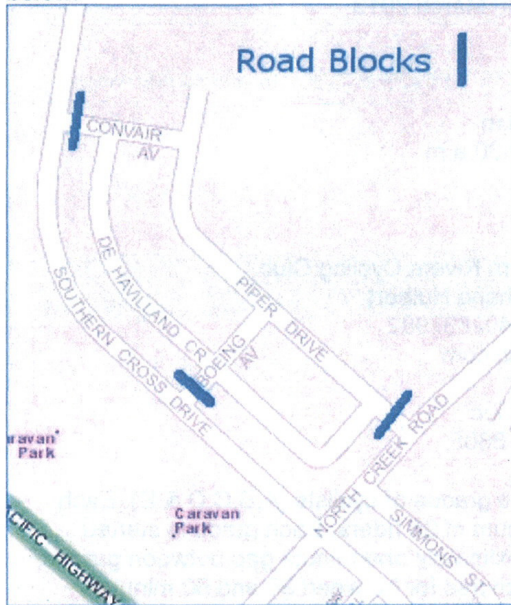
Signs will be erected warning of the road closure and event in progress 30 minutes before the event.

### Notification of Residents/Businesses

Subject to Ballina shire council approval conditions, all businesses affected by the road closure will be notified in writing prior to the event. There are no residents in the streets to be closed.

Traffic and Transport Management

The criteriums are to be held on Convair Ave, Piper Dr & DeHaviland Cr, Ballina. Convair Avenue, Boeing Avenue and Piper Drive are to be blocked by road barriers as depicted in the map below.



Marshals

A traffic marshal will be placed at each of the three road closures to control pedestrian flow and to ensure the barricades stay in place to prevent the entry of motor vehicles to the circuit.

Signage

Signs will be erected warning of the road closure and event in progress 30 minutes before the event.

Notification of Residents/Businesses

Subject to Ballina shire council approval conditions, all businesses affected by the road closure will be notified in writing prior to the event. There are no residents in the streets to be closed.