



northern
rivers
community
gallery

Northern Rivers Community Gallery

Strategic Plan 2013 - 2018

northern rivers community gallery **strategic plan**



northern
rivers
**community
gallery**



ballina
shire council

cnr cherry & crane Streets • ballina nsw 2478
t 02 6681 6167 • e nrcg@ballina.nsw.gov.au

ballina.nsw.gov.au

⌂ Front page: *Bundjalung Dreaming* by Albert 'Digby' Moran 2012 (Installation view)

Strategic Plan 2013 - 2018

Northern Rivers Community Gallery, Ballina

INTRODUCTION	4
ACKNOWLEDGEMENT	4
Acknowledgement of Country	4
Community Support	4
NRCG : BACKGROUND	5
OUR VISION	6
OUR OBJECTIVES	6
OUR STRATEGY	7

INTRODUCTION

The Northern Rivers Community Gallery (NRCG) is pleased to present this strategic plan to support the implementation of the Ballina Shire Council's Community Strategic Plan (CSP) adopted for the period 2013 to 2023.

The CSP provides the broad strategic direction to cater for the projected needs of the Ballina Shire. Council's endorsed four-year Delivery Program supports the CSP and provides greater detail for the resourcing and financing of these strategies.

The NRCG Strategic Plan establishes the broad objectives to direct operations within the NRCG over the next five years and reflects the Council's commitment to the achievement of aspirations contained in the CSP and Delivery Program. The NRCG Strategic Plan will undergo regular reviews to maintain relevancy with regard to the changing needs of our community.

With particular reference to the directions established in Council's Community Strategic Plan, the NRCG is linked to the Connected Community, with particular reference to the following outcome:

CC2.2 Create events, strategies and activities that promote interaction and education, as well as a sense of place.

NRCG activities also fulfil other outcomes in Council's Community Strategic Plan, including:

CC2.1 Encourage community interaction and volunteering.

CC2.3 Provide young people with a range of leisure activities along with opportunities for personal development.

CC3.3 Provide strategies for older residents to be part of our community.

As the key Council-managed facility for the support of our creative sector, the NRCG and its Strategic Plan provide a sound policy framework to support the vibrancy and diversity so important for a holistic and inclusive community.

ACKNOWLEDGEMENT

Acknowledgement of Country

Ballina Shire Council and the Gallery acknowledges that we are here on the land of the Bundjalung people. The Bundjalung people are the traditional owners of this land and are part of the oldest surviving continuous culture in the world.

Community Support

The Council and the NRCG recognise the support provided by members of the Ballina Arts and Craft Centre Incorporated (BACCI) during the Gallery's formative years.

The Council, as the operator of the NRCG, and Council staff also recognise the numerous volunteers who energetically fulfil various roles and give freely of their time in the provision of support and quality customer service at the NRCG.

NRCG : BACKGROUND

The Ballina Shire Council established the Northern Rivers Community Gallery in 2007 with the purpose of creating a professional and high-profile exhibition space for its residents and visitors.

The Northern Rivers region is acknowledged for the strength and diversity of its creative industry sector, particularly in relation to the visual arts. The NRCG serves as an essential vehicle through which this burgeoning artistic sector can be supported and nurtured.

As a community gallery, distinct from a regional or commercial artistic institution, the NRCG is driven by the principles of access, equity and participation for local artists and local audiences while striving for the highest standards of programming.

Like other community galleries, artistic and cultural programs are largely initiated by our residents so that individual artists, artist groups, cultural and community groups, curators, and heritage groups may apply to exhibit.

The NRCG also endeavours to provide a facility for touring exhibitions and in-house curated programs undertaken with community, educational or arts organisations and/or artists.

With four exhibition spaces, the NRCG is able to present a diverse exhibition program and provide opportunities for emerging and established artists to sell their works with the Gallery charging a hire fee and a commission on all sales. Exhibitions are generally rotated every four to five weeks with works varying from sculpture and painting to textiles and multimedia.

The NRCG is privileged to be housed in the historic former Ballina Municipal Council Chambers. Built in 1927, the Ballina Shire Council renovated this building in 2007 to the highest standard in lighting, climate control and security to provide an exceptional space for patrons to enjoy exhibitions and other public programs.

Adjacent to the Gallery, and part of the historic Chambers building, is the Ballina Gallery Cafe which provides quality hospitality services including catering for functions and events.

OUR VISION

“ It is the vision of the Ballina Shire Council and the Northern Rivers Community Gallery to support and develop a diverse and engaged creative community via a distinctly local program of exhibitions, public programs and events.”

OUR OBJECTIVES

1. To present a distinctly local, accessible, and artistically diverse program of exhibitions, public programs and events.
2. Through learning programs, the Gallery will celebrate, support and preserve the Northern Rivers' history, stories, cultures and creative development.
3. Provide leadership for growth and sustainability of this region's creative industries.
4. Encourage audience development and profile-building for the Gallery.
5. Continue to reactivate the premises as a central hub to the arts and cultural activity of the region.
6. Ensure that, as far as practicable the NRCG's operations strive to adhere to an economically sustainable model that ensures artistic integrity whilst promoting opportunities for revenue development.

OUR STRATEGY

1. To present a distinctly local, accessible and artistically diverse program of exhibitions, public programs and events.



As the primary organisation and vehicle for the delivery of local artistic content in the Ballina Shire and wider region, the NRCG is uniquely placed to deliver an artistic program that promotes our region and celebrates local creative industries.

Our outcomes and what the NRCG will do:

Promotion of Local Artists and the Creative Arts of this Region

- Partnerships between the NRCG and local community groups and sectors are fostered through collaborative public exhibitions and programs.
- encourage professional development opportunities for established and emerging local artists through exposure, sales and employment opportunities.
- Support dynamic branding and profile development activities for the NRCG.

Facilitating Accessibility

- Contribute to the creative learning opportunities for exhibitors and audiences of all ages, skills and backgrounds.
- Deliver exhibitions and public programs that encourage inclusion and participation.
- Celebrate diversity
- Represent and engage the diverse communities within the Northern Rivers.

What the benefits will be:

- Improved opportunities for local artists.
- Creation of learning opportunities outside the traditional education environment.
- A diversification of experiences for local residents.
- Enhanced opportunities for social engagement and interaction.
- Greater diversity of skills and awareness through fostering synergy of cultural and community sectors.

L-R: Hannah Masey; installation view artwork by Andrew Hmelnitsky; installation view Bernadette Curtin; exhibition launch

our strategy (con't)

- Through learning programs, the Gallery will celebrate, support and preserve the Northern Rivers' history, stories, cultures and creative development.



Through the accessible qualities of visual and creative arts, the NRCG is well positioned to provide an important resource for the acknowledgment and promotion of local history and culture. The celebration of culture and art at the NRCG allows our community the opportunity to express and connect with the unique qualities of this region.

Our outcomes and what the NRCG will do:

Celebrating Northern Rivers History, Culture and Stories

- Recognition and valuing our cultural heritage and local history by providing opportunities for local artists or artists associated with the region to exhibit and present public programs.
- Develop and present learning programs that explore the region's culture, place and creativity.

Promotion of Tolerance and Understanding

- Partnering with community sectors to present exhibitions, public programs and events that celebrate diversity.

Facilitating Community Engagement

- Promotion of social connectedness and engagement in learning experiences via the visual arts.

What the benefits will be:

- Recognition and valuing of our cultural heritage and local history.
- Regional identification, community connectedness and celebration.
- Building reconciliation through cultural appreciation.
- Learning beyond the traditional forms.

L-R: 1,2 & 3 education program for Bundjalung Dreaming by Albert 'Digby' Moran; school holiday program. 

our strategy (con't)

3. Provide leadership for the growth and sustainability of this region's creative industries.



The NRCG is a leading public institution for commercial sales of works by artists of the Northern Rivers region. As a key facilitator, the NRCG is positioned to execute key deliverables in the promotion of this region's creative industries.

Our outcomes and what the NRCG will do:

Facilitate and Support Professional Development Opportunities for Local Artists and Arts Workers

- Provision of an outstanding facility in which artists can exhibit and sell their works.
- Support an environment that allows opportunities for established and emerging artists and arts workers to explore new forms of creativity and artistic expression.
- Opportunities for artists and art workers to develop and present workshops, lectures and other public programs.

Stimulating Commercial Sales for Local Artists

- Encourage continued growth of artwork sales.
- Support continued audience diversification.

Stimulating this Region's Creative Industries

- Networking, and exhibition and curatorial opportunities for local artists and art workers.
- Maintain a high rotation of local content that represents a broad cross section of the Northern Rivers community.
- Monitor and respond to the changing artistic and cultural needs, interests and priorities of the Northern Rivers community.

Connectedness to the Community

- Develop and maintain relationships with key contributors and stakeholders including local artistic and creative groups, educational and learning institutions, the corporate community and government.
- Maintain a vibrant volunteer program for the NRCG that supports operations.

What the benefits will be:

- Greater opportunities for employment of local artists.
- Leadership in professional development and active learning outside the traditional and institutional education environments.
- Showcasing local product and celebrating our unique creative industry.
- A strong, centralised foundation for arts, culture and heritage in the shire allowing for future diversification based on community needs.
- Ensuring that the NRCG remains relevant as a facilitator and leader in the promotion of arts in the region.
- Provide opportunities for artwork sales that reflect trends and cultural needs within the community.

L-R: ceramics by Suvira McDonald; installation view artwork by Bronwyn Russell Collins; pendant by Jen Banks; Albert 'Digby' Moran

our strategy (con't)

4. Encourage audience development and profile-building for the Gallery.



As one of the key creative institutions of the region, the NRCG is positioned to stimulate cultural engagement and participation with greater audience development and commercial activity. As an institution that attracts significant visitor numbers to the region, continued collaboration with tourism organisations will ensure the NRCG provides valuable and vibrant contributions to the sector.

Our outcomes and what the NRCG will do:

Encouraging Audience Development and Profile-Building

- Develop and present a range of exhibitions and new programs that strategically engage targeted audiences.
- Present new and support existing strategies to enhance the NRCG profile within the community.

Strategic Collaboration with Tourism Organisations

- Develop a greater profile for the NRCG through strengthened collaborations with tourism and visitor organisations of the Northern Rivers.
- Seek new partnerships with organisations with established relationships with inter-regional visitors.

What the benefits will be:

- Greater visitor numbers to the NRCG which may attract increased artwork sales, greater income to the Gallery and further exposure for artists.
- Increased opportunity for the promotion of this region's history, stories and cultures.
- The NRCG will serve as a creative hub that will support tourism activity within the region.

L-R: education program; music at the Gallery concert; gallery event; exhibition launch

our strategy (con't)

5. Continue to reactivate the premises as a central hub to the arts and cultural activity of the region.



The NRCG operates within the historic former Ballina Municipal Council Chambers and, consequently, has been charged with the responsibility for the building's maintenance and activation as a hub for the promotion of creativity and the arts within the shire.

Our outcomes and what the NRCG will do:

Maintain the former Ballina Municipal Council Chambers Building Infrastructure

- Ensure the maintenance and development plans for the structure, outdoor grounds and embellishments are informed by the heritage status of the property, in consultation with Council's asset managers.

Reinforce our Sense of Place and Enhance Community Ownership

- Continue to develop the profile of the NRCG and accordingly develop the physical surrounds (outdoor grounds) to ensure a flexible, accessible and usable site for community arts activity and events.
- Ensure outdoor grounds, including public art, signage and any changes to the building are sympathetic to its heritage status and suited to the public use of the facility in keeping with the principles of access, equity and participation.

What the benefits will be:

- Preserve the cultural and historic significance of the building for the lasting enjoyment of residents and visitors.
- Continued activation of the site for accessibility and diversity of programming and activities with respect to its historical and cultural significance.
- Greater integration with the central business district of Ballina.

L-R: installation view artwork by Bernadette Curtin; NRCG; gallery event; exhibition launch



our strategy (con't)

6. Ensure that, as far as practicable, the NRCG's operations strive to adhere to an economically sustainable model that ensures artistic integrity whilst promoting opportunities for revenue development.



Creative and artistic institutions are often difficult to resource and maintain whilst ensuring a dynamic and culturally sensitive program of work. The NRCG is thankful for the support it receives as a service of the Ballina Shire Council. The NRCG continues to look at new funding opportunities to augment its present resources and support innovative projects in the future.

Our outcomes and what the NRCG will do:

Promoting Sales Opportunities

- Develop and deliver a program of exhibitions, public programs, events and shop stock rotations that have the potential to optimise sales opportunities and consumer interest.
- Encourage audience diversification to attract new NRCG supporters from within and beyond the Northern Rivers region.
- Maintain current and seek new media partners to ensure continued promotion of the NRCG and its changing program.

Promotion of Artistic Integrity

- Develop and deliver a balanced exhibition program that allows for non-commercially focussed exhibitions where other benefits are gained.

Revenue Raising from Non-Government Sources

- Promote existing and new non-governmental revenue streams including, but not limited to, areas of corporate and other giving programs, philanthropy and patron services fees.

What the benefits will be:

- Increased patronage to the NRCG and the Gallery Café.
- Improved community awareness of NRCG services.
- Economic stimulation of this region's creative industries.
- Opportunities to generate greater revenue to extend current programming and fund future initiatives.

L-R: exhibition launch; music at the Gallery concert; installation view artwork by Bronwyn Russell Collins; music at the Gallery concert. ↑



Ballina to the Border... via the studio by Andrew Hmelnitsky 2013 (installation view) 
Photo: Paul Tutthill







northern
rivers
community
gallery

Northern Rivers Community Gallery

Annual Report 2012 - 2013

northern rivers community gallery **annual report**

nrcg

northern
rivers
**community
gallery**



ballina
shire council

cnr cherry & crane Streets • ballina nsw 2478
t 02 6681 6167 • e nrcg@ballina.nsw.gov.au

ballina.nsw.gov.au

Annual Report 2012 - 2013
Northern Rivers Community Gallery, Ballina

MAYORAL MESSAGE	4
GALLERY CO-ORDINATOR'S MESSAGE	5
OUR HISTORY	6
OUR VISION	7
OUR OBJECTIVES	7
OUR EXHIBITIONS	8
Exhibitions 2012/13	9
Attendance	10
Example of program flyer	12
OUR FINANCIALS	13
OUR COMMUNITY	14
Community and Education Initiatives	14
Visitor Feedback	14
Learning Programs	15
School holiday workshops for children	16
Exhibition launch events	16
Music at the Gallery	16
OUR MEDIA RELATIONS	17
OUR CORPORATE GOVERNANCE	20
Our Council Representatives	20
GALLERY STAFF & VOLUNTEERS	21
Volunteer Program	21

MAYORAL MESSAGE

Now in its sixth year of operation, the Northern Rivers Community Gallery remains Ballina Shire Council's most significant investment in arts and culture. Our ongoing commitment to the facility has ensured it's grown to be an important community facility, not only for the Ballina Shire but to the entire Northern Rivers region.

I'm pleased to report that the Gallery has seen another successful year in terms of the exhibition and events program with a great result in visitor numbers and sales. Importantly the Gallery's profile is growing across the region and there is growing interest from local artists to be part of the Gallery's diverse program.

In August 2012 the Gallery presented Bundjalung Dreaming, a solo exhibition by leading Bundjalung artist Albert 'Digby' Moran. This was a significant opportunity for the Gallery to showcase the work of such an accomplished professional artist.

The Gallery continues to present a diverse program including artwork by emerging artists, the education sector and we are pleased to continue our commitment to an annual NAIDOC exhibition and exhibition of work by the Ballina Arts and Craft Centre Incorporated.

All of what is achieved at the Gallery would, quite simply, not be possible without the support of the Gallery's team of volunteers. Across 2012-2013 the Gallery was supported by a team of 46 volunteers. I'd like to express my sincere gratitude to this wonderful team.

I look forward to another year ahead and to seeing the Gallery evolve even more in the coming years.

Cr David Wright
Mayor

GALLERY CO-ORDINATOR'S MESSAGE

2012-2013 has been another exciting year for the Gallery. Having presented a staggering 34 exhibitions in 12 months, the Gallery has certainly had the opportunity to show what it can do in terms of diversity and calibre of exhibitions. Audiences have been so positively engaged in the program and supportive of our objective to represent the diverse sectors of our community.

The Gallery also plays a tremendous role in professional development of visual artists in our community. Time and again exhibitors report positively on the opportunity to exhibit in a professional public gallery, as a valuable extension to their practice as an artist.

Across the next 12 months our biggest challenge is to continue to increase the Gallery's profile across our Northern Rivers region. The Gallery, with the Café, is a great facility for locals and visitors and we want more people to enjoy this experience.

It is such a great pleasure to work with the exhibiting artists and share their experience of showing their work in this space. I look forward to developing the Gallery in the coming years.

Ingrid Hedgcock
Gallery Co-ordinator

OUR HISTORY

The Ballina Shire Council established the Northern Rivers Community Gallery in 2007 with the purpose of creating a professional and high-profile exhibition space for its residents and our visitors.

The Northern Rivers region is acknowledged for the strength and diversity of its creative industry sector, particularly in relation to the visual arts. The NRCG serves as an essential vehicle through which this burgeoning artistic sector can be supported and nurtured.

As a community gallery, distinct from a regional or commercial artistic institution, the NRCG is driven by the principles of access, equity and participation for local artists and local audiences while striving for the highest standards of programming.

Like other community galleries, artistic and cultural programs are largely initiated by our residents so that individual artists, artist groups, cultural and community groups, curators, and heritage groups may apply to exhibit.

The NRCG also endeavours to provide a facility for touring exhibitions and in-house curated programs undertaken with community, educational or arts organisations and/or artists.

With four exhibition spaces, the NRCG is able to present a diverse exhibition program and provide opportunities for emerging and established artists to sell their works with the Gallery charging a hire fee and a commission on all sales. Exhibitions are generally rotated every four to five weeks with works varying from sculpture and painting to textiles and multimedia.

The NRCG is privileged to be housed in the historic former Ballina Municipal Council Chambers. Built in 1927, the Ballina Shire Council renovated this building in 2007 to the highest standard in lighting, climate control and security to provide an exceptional space for patrons to enjoy exhibitions and other public programs.

Adjacent to the Gallery, and part of the historic Chambers building, is the Ballina Gallery Cafe which provides quality hospitality services including catering for functions and events.

OUR VISION

“ It is the vision of the Ballina Shire Council and the Northern Rivers Community Gallery to support and develop a diverse and engaged creative community via a distinctly local program of exhibitions, public programs and events. ”

OUR OBJECTIVES

1. To present a distinctly local, accessible, and artistically diverse program of exhibitions, public programs and events.
2. Through learning programs, the Gallery will celebrate, support and preserve the Northern Rivers' history, stories, cultures and creative development.
3. Provide leadership for growth and sustainability of this region's creative industries.
4. Encourage audience development and profile-building for the Gallery.
5. Continue to reactivate the premises as a central hub to the arts and cultural activity of the region.
6. Ensure that as far as practicable the NRCG's operations strive to adhere to an economically sustainable model that ensures artistic integrity whilst promoting opportunities for revenue development.

OUR EXHIBITIONS

The NRCG presented 34 exhibitions in 2012 – 2013 representing approximately 330 individual exhibitors.

Exhibitor profiles ranged from emerging to established artists; preschoolers to secondary school students to PhD candidates; artists from various cultural backgrounds.

The range of media explored was also diverse including painting, ceramics, printmaking, textiles, weaving, photography, sculpture, animation and sound.

Highlights from the program include Albert 'Digby' Moran's solo exhibition *Bundjalung Dreaming* and, for its experimental nature, NRCG's first audio visual exhibition *Inaudible Visions, Oscillating Silences* by Southern Cross University PhD candidate Isabelle Delmotte.



Installation view *Bundjalung Dreaming* by Albert 'Digby' Moran 



Installation view *Sea Life* by Lyndall Bensly; *Reef Reconstruction* by Bernadette Curtin; *The Familiar* by Maggie Cross 

Exhibitions 2012/13

DATES	EXHIBITION : ARTIST
27 June – 8 July 2012	Annual NAIDOC exhibition, 2012 (Group show)
11 July - 5 August 2012	2nd Grace Cruice Memorial Exhibition : Ballina Arts and Craft Centre Inc. (Group show)
8 August – 2 September 2012	Bundjalung Dreaming : solo exhibition by leading Bundjalung artist Albert 'Digby' Moran
5 September – 30 September 2012	Artfelt Artprize : on light and darkness (Group show)
3 October – 28 October 2012	Ballina Art Society: Glimpses (Group show)
31 October – 25 November 2012	Good Beginnings : Ballina Fox Street Preschool (Group show) I Walk the Earth : Cassandra Purdon The Travelling Menagerie : Sarah Harvey Geologica Coast : Patricia Walsh The Spell of Nature : Michele-Karin Valerio
28 November – 23 December 2012	Coastal Lines : Anne Leon, Potts and Barbara Carmichael Seasonal Journeys : Wendy Taylor
9 January – 3 February 2013	Return to Girraween : Karyn Fendley Bodyscapes : Faye Maxwell Namaste : Mirra-Winni Gaze Broken Headlands : Rick Molloy and Maryanne Shea A Geography of Light : Colleen DaRosa
6 February – 3 March 2013	Reef Reconstruction : Bernadette Curtin Marks of Time : Helen Halliday The Familiar : Maggie Cross Sea Life : Lyndall Bensley
9 March – 28 March 2013	90-13 Cross Section : Scott Watson Inaudible Visions, Oscillating Silences : Isabelle Delmotte
4 April – 28 April 2013	Loud 2013 : Ballina Shire Secondary Schools (Group show) Sprung!! : integrated dance theatre (Group show) Art Takes a Walk : Southern Cross School Distance Edu. (Group show) Xavier Portrait Prize : Xavier Catholic College (Group show)
1 May – 26 May 2013	This one is for Robin Carlson : David Shaw PANoptic : Practicing Artists Network (Group show) Boundless Diversity : Meg Egglestone
29 May – 23 June 2013	Drawing into Wet Paint : Michael Chapus Container of Dreams : Clare Urquhart Homage : Bronwyn Russell Collins Inter-connected : Leah Thiessen and Jacqueline King

Attendance

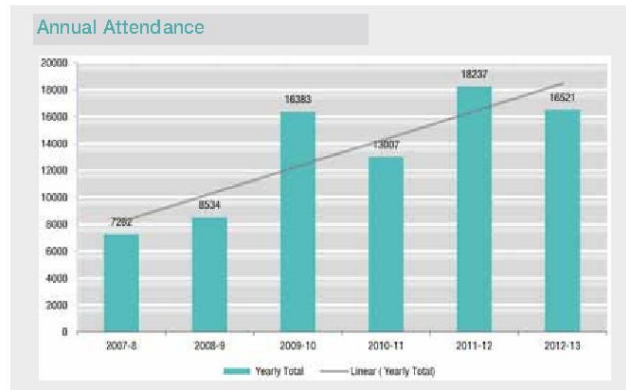
The NRCG continues to attract an impressive number of visitors each year. For the period 2012-13, the Gallery saw 16,521 visitors pass through its doors with an impressive average of 324 people visiting per week.

This succession of impressive attendance figures continues as a result of the monthly rotation of high-quality art and craft exhibitions, workshops and other community events, and the support of the Ballina Gallery Cafe.

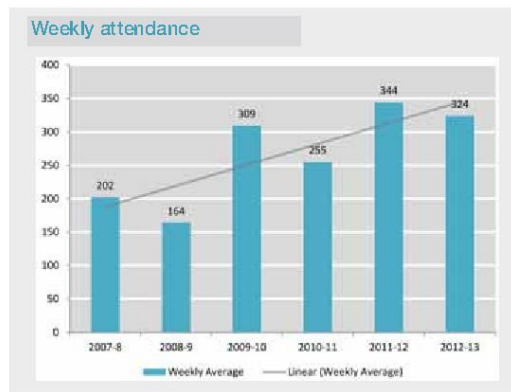
Although there was a nominal drop in attendance in 2012-13, the overall Gallery attendance trends continues to be positive. This acknowledges that while some exhibitions prove more popular than others, the Gallery is establishing a strong and regular supporter base.

We note that in 2009-10 and 2011-12 spikes in attendance resulted from the establishment of the Ballina Gallery Cafe and The Knitted Garden exhibition (toured from Griffith Regional Gallery), respectively. However, the regular support base does not diminish with a continuing positive trend in attendance since the establishment of the NRCG in 2007.

YEAR	YEARLY TOTAL	%CHANGE (+/-)	WEEKLY AVERAGE
2007-8	7282	-	202
2008-9	8534	14.67	164
2009-10	16383	91.97	309
2010-11	13007	-20.61	255
2011-12	18237	40.21	344
2012-13	16521	-9.41	324
Average	13327	23.37	266

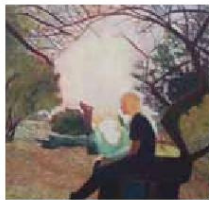


The strong community support for the NRCG is further exemplified in the weekly attendance average. While annual attendance figures spike from year to year depending on exhibition programming, the weekly attendance figures indicate a regular support for the Gallery and a growing base of visitors following positive trending results.



Secondary school students discussing a painting in the *Bundjalung Dreaming* exhibition. 

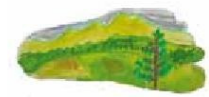
Example of program flyer



LOUD 2013
Ballina Shire Secondary Schools



Sprung!!
Integrated Dance Theatre



Art Takes a Walk
Southern Cross School Distance Ed.




Xavier Portrait Prize
Xavier Catholic College

Exhibition Dates
Thursday 4 April - Sunday 28 April 2013

Launch Event
Wed 10 April 5.30pm - 7.30pm
MCs from the Ballina Shire Youth Council + performance by Sprung!! and more.
Light refreshments served.

Workshops
Design and create your own badges with artist Jesse Mackintosh (make up to 4 badges each)
Friday 19 April
10am - 10.45am OR 11.15am - 12noon
For ages 9 to 14 years. \$10 each
(non-refundable, prior payment essential)

This is an integrated workshop. 

For details about other exciting artist-run workshops for kids these school holidays visit the 'What's New' section of www.ballina.nsw.gov.au



LOUD 2013 A dynamic exhibition of artworks by secondary school students of the Ballina Shire; Altonville High School, Ballina High School, Emmanuel Anglican College, Southern Cross School K-12 and Xavier Catholic College.

Image Freya Yi 12 2012 Ballina High School *Rise, Presence and Absence* Acrylic on canvas



Sprung!! Integrated dance theatre photographed by Katrina Folkwell. This project transcends the traditional boundaries between young people with and without disability. Supported by Altonville Dance Studio, Accessible Arts NSW, and Arts NSW through CASP.



Art Takes A Walk Artwork by Southern Cross School K-12 Distance Education students who come from a variety of backgrounds – some geographically isolated, some travellers, some performers.

Image Elijah Feetscape (detail)



Xavier Portrait Prize Portraits painted by year 10 students (in 2012) from Xavier Catholic College.

Image Elizabeth Porhail [Dave Gray] 2012 [highly commended and third place People's Choice winner in Xavier Portrait Prize]

Northern Rivers Community Gallery | 44 Cherry Street Ballina | Ph 02 6681 6167
Open Wed to Fri 10.00am – 4.00pm | Weekends 9.30am – 2.30pm | Closed Public Holidays



OUR FINANCIALS

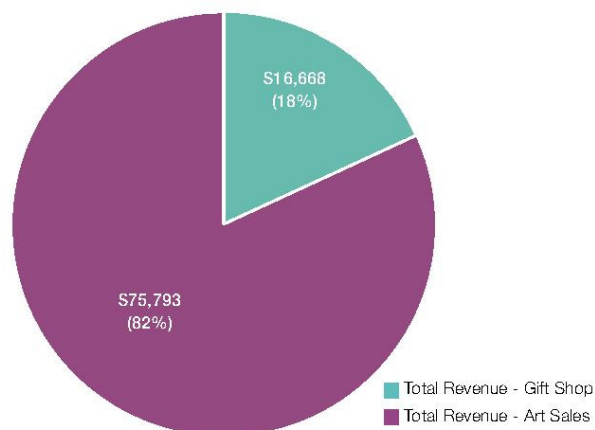
The NRCG is one of the leading public facilities for the sale of artworks within the region. Artwork and Gift Shop sales represent the primary source of non-government revenue for the Gallery.

In the financial period of 2011-12 to 2012-13:

- Total income generated from the gift shop and artwork sales in 2012-13 was \$92,461.
- An increase in revenue from gift shop and artwork sales totalled \$7,498 representing an 8.8 percent increase.
- The NRCG gained \$30,512 in commission revenue from all gift shop and artwork sales in 2012-13.
- A total of \$56,925 was paid to artists from gift shop and art work sales in 2012-12.
- There was a 12.8 percent increase in revenue generated from total gift shop sales representing a \$1,893 gain from the previous year.
- A 8.0 percent increase in revenue generated from total exhibition artwork sales revenue representing a \$5,605 gain.

The pie graph illustrates the percentage split from revenue generated from the gift shop and exhibition artwork sales. Although items in the gift shop are smaller in price, the fast turnover in stock sees a representation in income of almost twenty percent

	2011 - 12	2012 - 13	%(+/-)
GIFT SHOP			
Total Gift Shop Revenue	\$14,775	\$16,668	12.8
Gift Shop Commission	\$4,876	\$5,501	
Gift Shop Artist Payment	\$9,899	\$11,168	
ARTWORK SALES			
Total Exhibition Revenue	\$70,188	\$75,793	8.0
Commission	\$23,162	\$25,012	
Exhibiting Artist Payment	\$47,026	\$50,781	
TOTAL REVENUE SHOP & ARTWORK SALES			
Total Revenue	\$84,963	\$92,461	8.8
Total Commission	\$28,038	\$30,512	
Total Exhibiting Artist Payment	\$56,925	\$61,949	
OTHER INCOME SOURCES			
Gallery Bookings & Exhibitions	\$10,105	\$11,684	
Gallery Sales Stock Items	\$64	\$331	
Donations	\$777	\$639	
Workshops	\$4,316	\$2,715	
Grants	\$3,500	\$0	
Other	\$0	\$2,981	



OUR COMMUNITY

In 2012-2013 the NRCG continued to present a broad exhibition program representing and engaging with diverse sectors of the community.

Community and Education Initiatives

In March 2013 the NRCG presented an audio-visual installation by Southern Cross University PhD candidate Isabelle Delmotte. The exhibition was a departure from the usual exhibition format for the NRCG and presented regular audiences with a challenging format.

“ I am very grateful to the management of the NRCG for taking the risk of exhibiting a large audio-visual installation that had not been shown before. To trust artists’ visions demonstrate a leap of faith in experimentation that many academic and established art institutions are not able, or willing, to take.

It has been a privilege to exhibit in a gallery warmed by the generosity of its volunteers. Their genuine interest in artistic pursuits and desire to communicate their enthusiasm were second to none. ”

Isabelle Delmotte, PhD Candidate, 2013
Southern Cross University

In April 2013 the NRCG presented a suit of exhibitions showcasing the creative talents of young people in the Ballina Shire. The four exhibitions featured visual arts by secondary school students and documentary photographs of an integrated dance-theatre program for young people with and without a disability.

“ Xavier Catholic College students from year 7-12 have been fortunate enough to have had the excellent opportunity to exhibit a range of artworks at Northern Rivers Community Gallery, as well as attend exhibitions and artist run workshops. The gallery provides valuable learning experiences to the students outside the classroom.

By collaborating with the gallery we have been able to celebrate the student’s achievements as well as providing links between the school and the wider community. The professional links are also beneficial to the teachers. The gallery allows students to see the Visual Arts as an important mode of human expression as well as a valid and valued vocational practice. Our students have gained confidence by having their works exhibited at the Loud Youth Week exhibition and The Xavier Portrait Prize. ”

Jasmin Rogers, Teacher, 2013
Xavier Catholic College

Visitor Feedback

“Completely amazed!” J Halek, New York City, 10 Aug 2012

“A wonderful experience to view Digby’s beautiful paintings and stories” B Gundry, Newcastle, 16 Aug 2012

“A real treat for the eyes” R Sajari, Byron Bay, 1 Dec 2012

“Well worth the Drive” R & J Smith, Tweed Heads, 9 Feb 2013

“Wonderful, such a great experience” S Walker, Alstonville, 13 Feb 2013

“Fantastic young talent!” L Bolga, Ballina 21 Apr 2013

Learning Programs

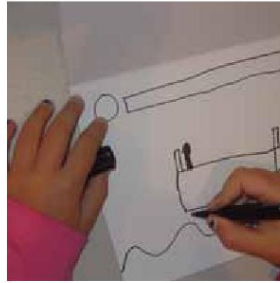
In August 2012 the NRCG hosted a series of workshops, presented by Albert 'Digby' Moran, for primary and secondary school students in conjunction with the Bundjalung Dreaming exhibition. The workshop program received some financial support from the Country Art Support Program (CASP). The program was booked out and received positive feedback from teachers and students.



Students participating in the August 2012 artist-run education program 

School holiday workshops for children

Throughout 2012 -2013 the NRCG presented artist-run workshops for children during the school holidays. Programs were well patronised resulting in repeat visits, in following school holidays, from many families and vacation care groups. Workshops are generally for children between 5-12 years of age with the average ticket price being \$12 per child.



Exhibition launch events

Launch events were held for each new exhibition/group of exhibitions, making a total number of 13 launch events for the year. The average attendance to launches in 2012-2013 was 147 people per event.



Music at the Gallery

In February 2013 the NRCG presented the first Music at the Gallery featuring Essence (sopranos Katie Rutledge and Beth McBride). The concert was booked out and received exceptional reviews.



OUR MEDIA RELATIONS

We enjoy a strong relationship with local print, radio and television media that helps spread the word of the Gallery's activities. Media releases concerning forthcoming activities and exhibitions are issued frequently to all local media. The Gallery Co-ordinator writes a regular column in the local community newspaper, the Ballina Shire Advocate, and she has a regular interview on local community radio station Paradise FM to discuss new exhibitions and to convey other Gallery "news".



ACCLAIMED: Indigenous painter presents his work in solo exhibition

Artist success story

MARNIE JOHNSTON
marniejohnston@northernrivers.com.au

ALBERT Digby Moran, one of the region's most renowned artists, is putting his work on show this August at the Northern Rivers Community Gallery.

The acclaimed indigenous artist, who was born in Ballina and grew up on Cabbage Tree Island will present more than 40 of his works in a solo exhibition titled Bundjalung Dreaming.

From August 8 the gallery in Ballina will be filled with Mr Moran's celebrated works, from his "fables to heroes" pieces, with the official launch taking place on Saturday August 11.

His stunning artworks are inspired by his indigenous culture and his personal connection to

“It was always there, just waiting for the right time for me to express it”

Albert Digby Moran

the land. The artist, who has led an undoubtedly colourful life, began his artistic career later on, working in agriculture and as a professional boxer before taking to the paintbrush. “It was always in me,” Mr Moran said yesterday.

“It was always there, just waiting for the right time for me to express it.”

Since he began, he's reached

national and international acclaim, with exhibitions all over the country and some prominent international shows, including solo exhibitions in Germany and Austria.

Mr Moran is truly humbled by his success and said “it's a good feeling” to be recognised by such a large audience.

In the local arena, he's become a mentor for youth, holding workshops at schools, and said it feels great to help others.

However, becoming a local success story hasn't gone to his head.

For the modest icon, the most important thing is “Just to see the expression on people's faces when they walk in there and see my artwork.”

The exhibition continues until September 2.

Source: Northern Star 28 July 2012



Youth art on show

Ingrid Hedgecock
In the Gallery

THE Northern Rivers Community Gallery will present four dynamic exhibitions in April showcasing the creativity of young people in our community.

The exhibitions coincide with National Youth Week this year, advocating a simple yet inspiring motto: **Be Active. Be Happy. Be You.** (www.youthweek.com)

With a culture that is quick to recognise and celebrate achievements in sport, these exhibitions are an important opportunity for young people to share and be applauded for their conceptual and technical achievements via their creativity in visual arts and design.

The exhibitions run from April 3 until April 28.

Lead is an exhibition showcasing artwork by students from secondary schools in the Ballina Shire.

Spring! is an exhibition about an integrated dance



GREAT SHOT: This photo by Xavier Catholic College student Karly Potts which will feature in a youth art exhibition at the Northern Rivers Community Gallery in Ballina

PHOTO: KARLY POTTS

theatre project of the same name as photographed by Katrina Folkwell.

Founded in 2012 by Sue Whitman of Alstonville Dance Studio) and paediatrician and creative arts practitioner Robyn Brady, **Spring!** transcends the traditional boundaries between young people with and without disabilities.

The **Xavier Portrait** Prize is an exhibition of 13 portrait

paintings by Year 10 students completed in 2012.

Art Takes a Walk is an exhibition of artwork by distance education students from Southern Cross School K-12.

During the school holidays, children 8 to 14 years of age are invited to enjoy a badge-making workshop with artist Jesse Mackintosh. The workshops are free and bookings are essential.

The Northern Rivers Community Gallery is located on the corner of Cherry and Crane Streets, Ballina. The gallery is open Wednesday to Friday from 10am-4pm and weekends 8.30am-2.30pm. The gallery is closed on public holidays and will be closed on Wednesday, April 4, while we install these exciting new shows.

For more details, call the gallery on 6681 61617.

Source: Ballina Shire Advocate 28 March 2013

Photo exhibit springs to life

Camera catches the joy and understanding as kids with and without disabilities are linked by dance.

A SHINY, sun-drenched scene at the Northern Rivers Community Gallery in Ballina captures the joy and understanding as kids with and without disabilities are linked by dance.

Seelma, Katrina and Janice Stiles of Stiles Photography captured the magic in the studio. Janice had a message for the community: "It's not just about the kids, it's about the joy of dance." The Northern Rivers Community Gallery is a place where everyone can find their joy.

Stiles Photography is a family business that has been in the community for over 20 years. They have a passion for capturing the joy of life's moments.

Stiles Photography is a family business that has been in the community for over 20 years. They have a passion for capturing the joy of life's moments.

Stiles Photography is a family business that has been in the community for over 20 years. They have a passion for capturing the joy of life's moments.

Stiles Photography is a family business that has been in the community for over 20 years. They have a passion for capturing the joy of life's moments.

Stiles Photography is a family business that has been in the community for over 20 years. They have a passion for capturing the joy of life's moments.



CAMERAS IN THE MOMENT: One of the works from Katrina Folkwell's **SPRING!** exhibition.

Source: Northern Star 6 April 2013

Essence at gallery

FOLLOWING their successful debut in Brisbane in 2012, vocal duo Essence is set to perform at the Northern Rivers Community Gallery in Ballina on Sunday, March 3.

Acclaimed soprano Katie Rutledge says Essence will perform a "gorgeous mix of classical, jazz and Celtic songs, all exquisitely arranged for two soprano voices and a chamber band".

"As a Ballina resident I am thrilled to be performing right here in my own home town. The Northern Rivers Community Gallery provides the perfect ambience for this intimate and relaxing style of concert, and provides great access for Northern Rivers music-lovers."

Time: 4.30-6pm (doors open 4.15pm).
 Tickets: \$37.50 (including GST, non-refundable).

Bookings: Phone the gallery on 6681 6167 or visit the gallery during opening hours, Wednesday to Friday from 10am until 4pm, weekends from 9.30am until 2.30pm.



MUSIC AT THE GALLERY: Vocal duo Essence will perform at the Northern Rivers Community Gallery in Ballina on March 3.

Source: Ballina Shire Advocate 20 February 2013 ↑

Artist peels back layers of his subconscious

MARNIE JOHNSTON
marniejohnston@northernrivers.com.au

A NEW exhibition will open soon at the Northern Rivers Community Gallery in Ballina: 90-13 Cross Section, a selection of works by artist Scott G Watson.

The name came because the show has works created between 1980 until 2013, tracing a journey through 10 distinct bodies of work.

Working predominantly in oil paint on board, Watson's work is constantly aiming to interpret the subconscious mark.

Living in Sydney in the early 1990s, Watson's aesthetic was influenced by time at art college, time spent living in inner-city Sydney warehouses and finding a chip strainer in a back lane in Redfern.

"One of the earliest works in the show is *Bride*, a piece I made using a chip strainer that I found," he said.

"It was instrumental in developing my sense of line."

Living in warehouses helped shape his appreciation for decaying and fading objects.

"I have always loved the revealing qualities of a

paint-peeled wall or the masking over of graffiti, creating fabulous minimal colour fields.

"I work with layers of paint and scrape back into these layers. I started gouging into the board (and into my paintings) as a way of gouging through planes of consciousness."

"When I use a chisel to make lines, I lack control over the types of marks that result. It allows for spontaneous mark-making; what comes out is a subconscious thing."

In 1986 the artist moved to the North Coast and spent six years living in a humpy.

This and a move to Drake in 2003, saw the influence of the natural environment in his work.

It will be at the Northern Rivers Community Gallery, Ballina, from Wednesday to March 28 and will be launched on Saturday from 4-6pm.

Scott G Watson with his painting *Looking for orchard*.



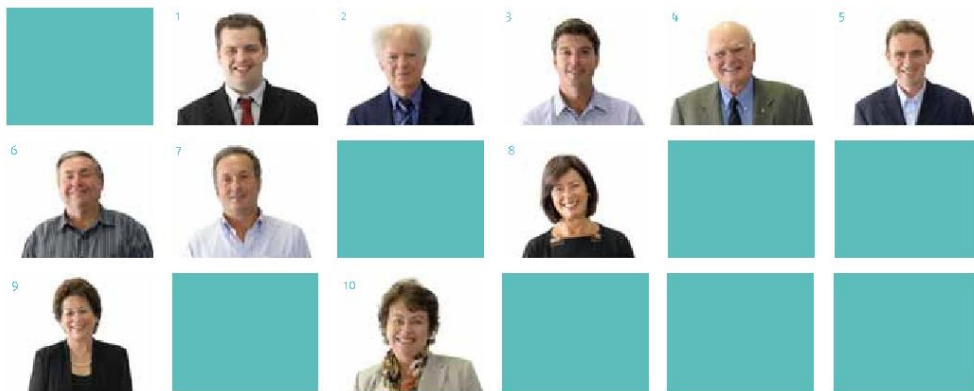
Source: Northern Star 4 March 2013 ↑

OUR CORPORATE GOVERNANCE

The Northern Rivers Community Gallery is a community facility of the Ballina Shire Council. The Gallery is administered by the Strategic and Community Facilities Group.

Our Council Representatives

The Ballina Shire Local Government Area is divided into three Wards, represented by ten elected Councillors including a popularly elected Mayor. The elected Council is responsible for the direction and control of Council's affairs in accordance with the NSW Local Government Act and associated legislation. Councillors represent the interests of our residents and ratepayers. They provide leadership and guidance; and facilitate dialogue between the community while maintaining the broader vision, needs and aspirations of the whole Ballina Shire.



Our Councillors 1 Cr Ben Smith 2 Cr David Wright (Mayor) 3 Cr Jeff Johnson 4 Cr Keith Johnson 5 Cr Keith Williams
6 Cr Ken Johnston 7 Cr Paul Worth 8 Cr Robyn Hordon 9 Cr Sharon Cadwallader 10 Cr Susan Mechar



GALLERY STAFF & VOLUNTEERS

The Northern Rivers Community Gallery forms part of the Strategic and Community Facilities Group of Ballina Shire Council. The Gallery is staffed by one full-time staff member, Ingrid Hedgcock, Gallery Coordinator and two casual staff, Lenny Bastiaans and James Brown, both professional exhibition installers.

Volunteer Program

The NRCG continues to be actively supported by a vibrant team of dedicated volunteers.

In 2012-2013 there were 46 active Gallery volunteers assisting with Gallery reception duties and other duties relating to exhibition preparation and presentation.

During the year they contributed a total of 1,800 hours of their time to supporting the Gallery's operations. A project volunteer was also active in assisting with the development of the Gallery's first strategic plan and annual report.

We thank our volunteers for the major contribution they make to the Northern Rivers Community Gallery.

Sonia Acret	Margaret Hiddle
Wilma Austin	Christina Layer
Amanda Ballhause	Ray Legge
Rosemary Bambrook	Matthew Lendrum (Project Volunteer)
Di Bell	Mary Leonard
Helen Bevan	Stephanie Lymburner
Pauline Blackwood	Julian Lymburner
Pia Brewster	Clare Messiter
Amanda Bromfield	Ana Miletic
Heather Brown	Denise Miller
Jane Burrows	Reg Miller
Fran Byrne	Vivian Miller
Christl Corkery	Joan Montalbetti
Marie Cumow	Robin Porritt
Faye Duncan	Margaret Readford
Karin Escombe	Sam Reid
Jackie Fairhall	Anne Sharpe
Ross Frederiksen	Claire Squires
Margaret Fryer	Margaret Sweetapple
Merran Gall	Gene Trim
Ina Gooley	Emma Walke
Laya Grady	Jan Warr
Jennie Hicks	Melissa Wright

Donation thank you

We would like to acknowledge artist Maggie Cross for her donation of 'Icon' to raffle as a fundraiser for the Gallery.



nrcg

northern
rivers
**community
gallery**



ballina
shire council