

Draft Delivery Program and Operational Plan - 2019/20 to 2022/23

Ballina Shire Council has prepared its draft Delivery Program for the four year period from 2019/20 to 2022/23. This document, which includes the draft Operational Plan for 2019/20, outlines items such as:

- the services and key actions planned by Council for 2019/20 to 2022/23
- a summary of the major capital works planned for 2019/20 to 2022/23
- our long term financial plan for 2019/20 to 2028/29 and
- the rates, charges and fees proposed for 2019/20.

Forecast movements in our main rates and charges are:

- CPI increases for the wastewater and waste annual charges
- No increase for the water access and stormwater annual charges
- A change in the charging structure for water access charges for multi-tenancy properties, which is now based on the number of occupancies, rather than meter size.
- The Independent Pricing and Regulatory Tribunal (IPART) approved a special rate variation for Council of 5.9% for 2019/20. The additional funding from this special rate variation is expended on increased infrastructure renewal works.

In addition to our recurrent capital works for roads, footpaths, storm water parks and sporting fields the major community infrastructure projects planned for 2019/20 are:

- Coastal Walk and Coastal Shared Path – completion of these two projects
- Lennox Head Cultural and Community Centre - major refurbishment
- Extension of Hutley Drive to Byron Bay Road, Lennox Head
- Completion of the Ballina Indoor Sports Centre.

The draft documents are now on exhibition and the public are encouraged to inspect the documents and make submissions to Council during the exhibition period. As part of the exhibition process Council will hold four public meetings. The dates and venues for these meetings are as follows:

7pm Tuesday 21 May 2019	Wardell War Memorial Hall
7pm Wednesday 22 May 2019	Ballina Shire Council Chambers
7pm Tuesday 28 May 2019	Lennox Community Centre (Park Lane Theatre)
7pm Wednesday 29 May 2019	Alstonville Leisure & Entertainment Centre (ALEC)

The draft Delivery Program, Operational Plan and associated documents can be viewed at Council's Community Access Points and our website ballina.nsw.gov.au

► [submissions close: Wednesday 12 June 2019.](#)

Enquiries: Linda Coulter, Manager Financial Services, **Ph 1300 864 444.**

Community Donations Programs 2019/20 Now Open

The draft 2019/20 Operational Plan provides funding through our donation programs to assist community based groups deliver services to our residents.

Applications are now being sought for the following donation programs for the 2019/20 period:

- **Donations – Financial Assistance for Community Groups**
Enquiries: Jay Ellis, Administration Officer, **Ph 1300 864 444.**
- **Donations – Capital Works Assistance for Community Sporting Groups**
Enquiries: Luke Marshall, Open Spaces Development Officer, **Ph 1300 864 444.**

For application forms refer to Council's website ballina.nsw.gov.au (search Community Donations).

► [submissions close: Friday 7 June 2019.](#)

Development Proposals

Notice is hereby given that the following development application has been lodged for Council's assessment and determination.

► [submissions close: Thursday 6 June 2019.](#)

da no	applicant	property
2019/223	Tim Fitzroy & Associates	Lot 890 DP 845412 2-4 Northcott Cres Alstonville
<p>proposal Expansion of the existing solid waste transfer station with a processing capacity of up to 28,000 tonnes per annum. The proposed expansion will allow for sorting of construction/demolition waste, general mixed waste, recycling, paper/cardboard, green waste, steel, timber, waste oil and community recycling centre for household chemicals. The transfer station is proposed to operate 6.00am to 6.00pm Monday to Friday and 7.00am to 4.00pm Saturdays and Sundays and the waste transfer (haulage) operations to occur 24 hours Monday to Sunday.</p>		
2019/170	Mrs M J Veronesi & Mr M P Veronesi	Lot 1 DP 736181, Lot 2 DP 236129 937 & 987 Wardell Rd Meerschaum Vale
<p>proposal Two lot boundary adjustment subdivision to create one x 78ha and one x 5ha allotments.</p>		

The subject development application and associated documents may be viewed by visiting Council's DAs (Development Applications) Online website da.ballina.nsw.gov.au, and clicking on **Applications On Exhibition** under the Applications menu. Computer access is also available at Council's Customer Service Centre, 40 Cherry Street Ballina between 8.15am and 4.30pm Monday to Friday (excluding public holidays).

Persons making a submission may need to disclose political donations/gifts provided to a Councillor or Council employee. Significant penalties apply for non-disclosure. For further information visit the Department of Planning and Infrastructure's website planning.nsw.gov.au

Customer Service Centre/Chambers
40 Cherry Street
PO Box 450
Ballina NSW 2478

Office Hours
8.15am to 4.30pm
Monday to Friday
(excluding public holidays)

Email council@ballina.nsw.gov.au
Web ballina.nsw.gov.au
Telephone 1300 864 444
Emergency After Hours
02 6626 6954

Community Access Points Business papers and documents on exhibition can be viewed at Council's Customer Service Centre; Alstonville, Ballina and Lennox Head Libraries.

Submissions Submissions are publicly available documents. For details on how Council manages submissions refer to our website ballina.nsw.gov.au (search 'your privacy').

Proposed resolution to classify operational land

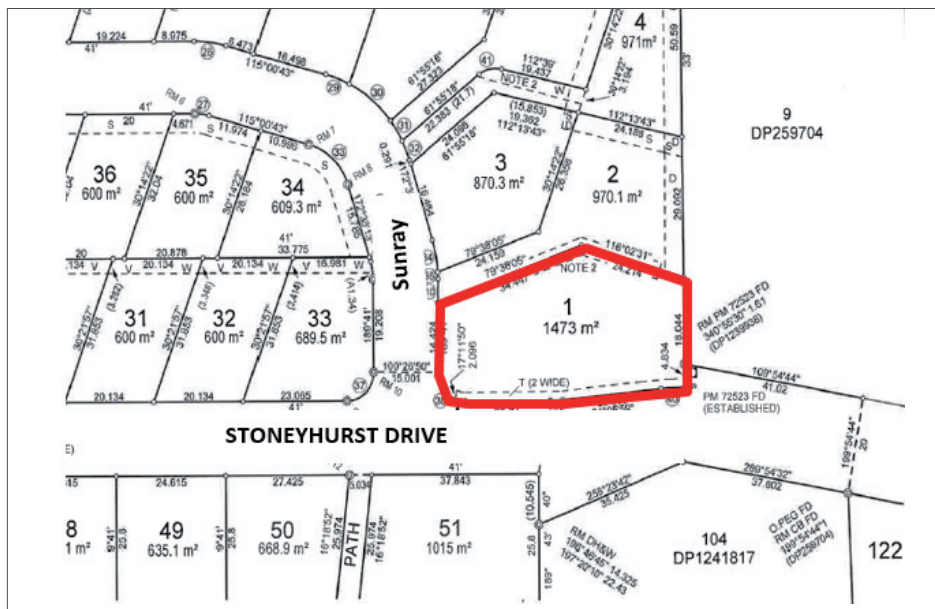
Ballina Shire Council is in the process of acquiring Lot 1 DP 1252778. Lot 1 is located on the north-eastern corner of Stoneyhurst Drive and Sunray Crescent at Lennox Head as indicated by red outline in the location diagram.

Council proposes to resolve to classify the land as operational land in accordance with the provisions of section 31(2) of the Local Government Act 1993. The land will be used for water supply purposes.

► submissions close: **Monday 24 June 2019.**

Enquiries: Klaus Kerzinger, Strategic Planner, **Ph 1300 864 444.**

Location Diagram:



© NSW Spatial Services 2019. This map is illustrative and not to scale.

Community Access Points Business papers and documents on exhibition can be viewed at Council's Customer Service Centre; Alstonville, Ballina and Lennox Head Libraries.

Submissions Submissions are publicly available documents. For details on how Council manages submissions refer to our website ballina.nsw.gov.au (search 'your privacy').