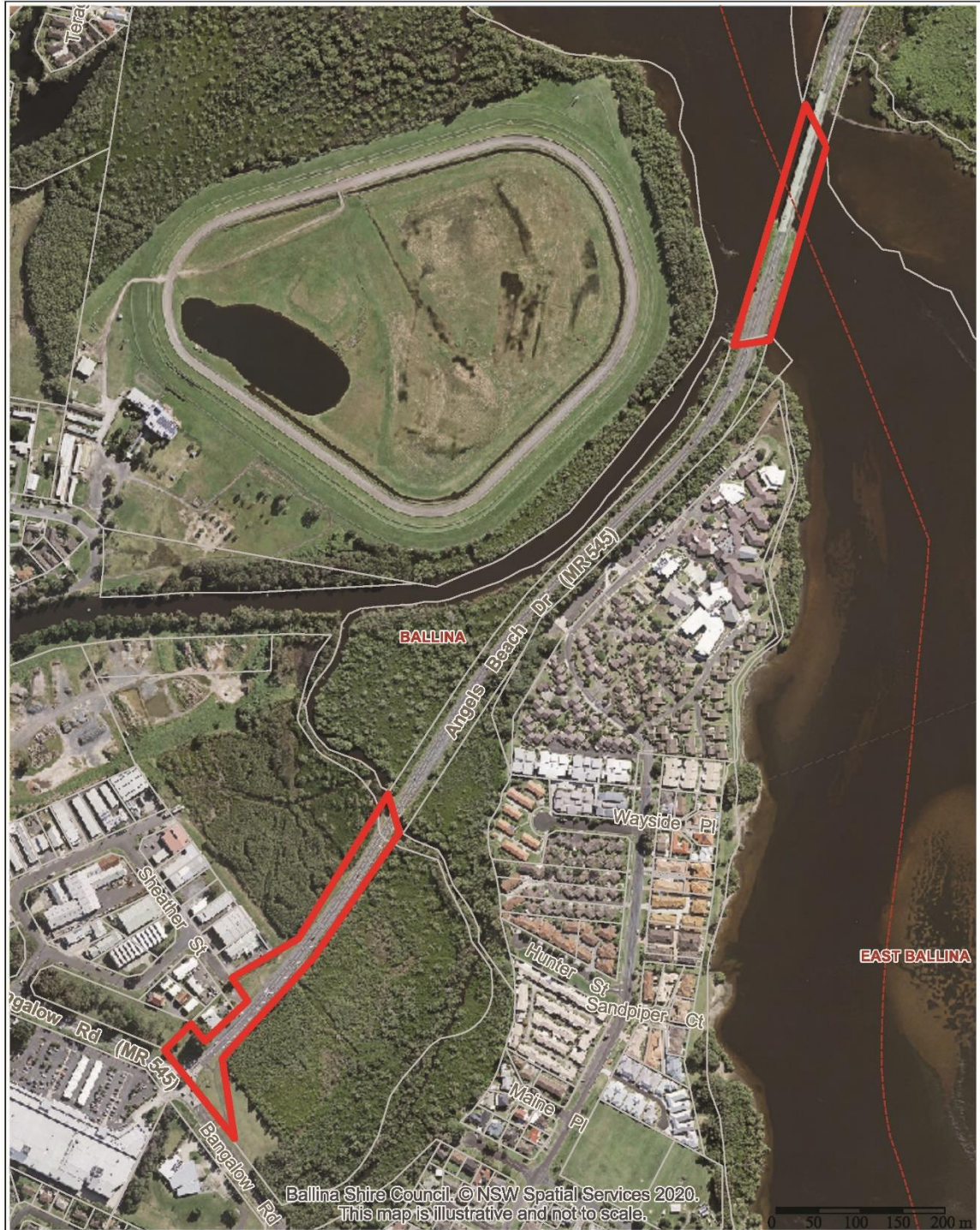


10.3 Angels Beach Drive - Acquisition of Crown Land



Ballina Shire Council
 40 Cherry Street
 BALLINA NSW 2478
 PO Box 450
 BALLINA NSW 2478
 1300 864 444
 council@ballina.nsw.gov.au
 www.ballina.nsw.gov.au



**Proposed Acquisition of Crown Land
 Angels Beach Drive, Ballina
 Part Lot 456 DP 729144, North Creek & Little
 Fishery Creek**

ballina shire council
 geographical information system

Projection: GDA94 / MGA zone 56
 Date: 20/03/2020

© Ballina Shire Council © NSW Spatial Services 2020
 While every care is taken to ensure the accuracy of this product, Ballina Shire Council and the Local / State / Federal Government departments and Non-Government organisations whom supply datasets, make no representations or warranties about its accuracy, reliability, completeness or suitability for any particular purpose and disclaims all responsibility and all liability (including without limitation, liability in negligence) for all expenses, losses, damages (including indirect or consequential damage) and costs which you might incur as a result of the product being inaccurate or incomplete in any way and for any reasons.

10.3 Angels Beach Drive - Acquisition of Crown Land



Planning,
Industry &
Environment

Diagram:

