

recycled water

# Alstonville Wastewater Treatment Plant

## History of the Plant

First constructed in 1976 and upgraded in 1983. Gravity fed due to the mountainous nature of the area.

Serves a population of 6000 residents in both Alstonville and Wollongbar.

Started recycling water for irrigation purposes in 2008 as part of the Urban Water Management Strategy.

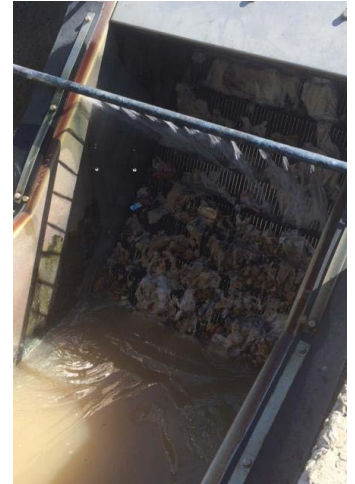
Water Quality is assured by adhering to the:

- Australian Guidelines for Water Recycling (2006)
- DEC Guidelines (2004)



Noel Barton is the Waste Water Whisperer who runs the Alstonville Plant.

Gravity Fed Step Screen removes most of the inorganic material.



Grit Arrester – air creates a vortex and solids settle on the bottom to be collected.



Chemical dosing pumps to pump aluminium sulphate into the EAT tanks in order to remove phosphorus.





Aeration tanks regularly decant the water leaving the sludge behind.



Chlorine is added to the water to fight any bacteria it may come into contact with before re-use.



Balancing ponds store the water before being reused for irrigation purposes.



Pumps then send the recycled water to a reservoir where it is gravity fed to the following on-farm storages for irrigation purposes:

- Alstonville Playing Fields and Nursery
- Growing Grounds Nursery
- TA & SA Moore's Nursery
- Natures DÃ©cor, Steve Powell
- Alstonville Tree Farm, Terry Prendergast
- Tropical Link, Paul Ueberdiek
- DJ & MA Pollock Beef Cattle Grazing
- Serendip, CJ & CE Rijks's avocado/macadamia farm
- Prestige Plants Nursery
- Moye Farm's custard apples



UV radiation acts as a tertiary treatment to disinfect the water.



**Contact information**

For customer service **phone (02) 6686 4444**

**www.ballina.nsw.gov.au**

**Council Customer Service Centre** 40 Cherry Street, Ballina

