

# BALLINA SHIRE COUNCIL

## ALSTONVILLE CEMETERY MASTER PLAN

Issue Date 10 July 2023



Photo: Alstonville Cemetery Entrance (2023)

**BACKGROUND**

**Traditional Country**

The land on which Alstonville Cemetery is located is the traditional Country of the people of the Bundjalung Nation.

**Cadastral Description**

The cemetery is situated on the Bruxner Highway at the edge of Alstonville village and the plateau. The cemetery consists of 4 land parcels and adjoining road reservations:

- Lot 377 D.P. 729097 dedicated as general cemetery;
- Part Lot 378 D.P. 729097 dedicated as general cemetery;
- Lot 1 D.P. 123576
- Lot 2 D.P. 123576

The forested area south of the existing burials and carpark in Lot 378 in D.P. 729097 is subject to a native title claim and is excluded from this master plan.

The picturesque cemetery is the shire's second largest cemetery and includes columbariums, memorial gardens, lawn burials and monument burials. Historically, interments occurred in religious denomination segments with more recent interments in non-denominational precincts.

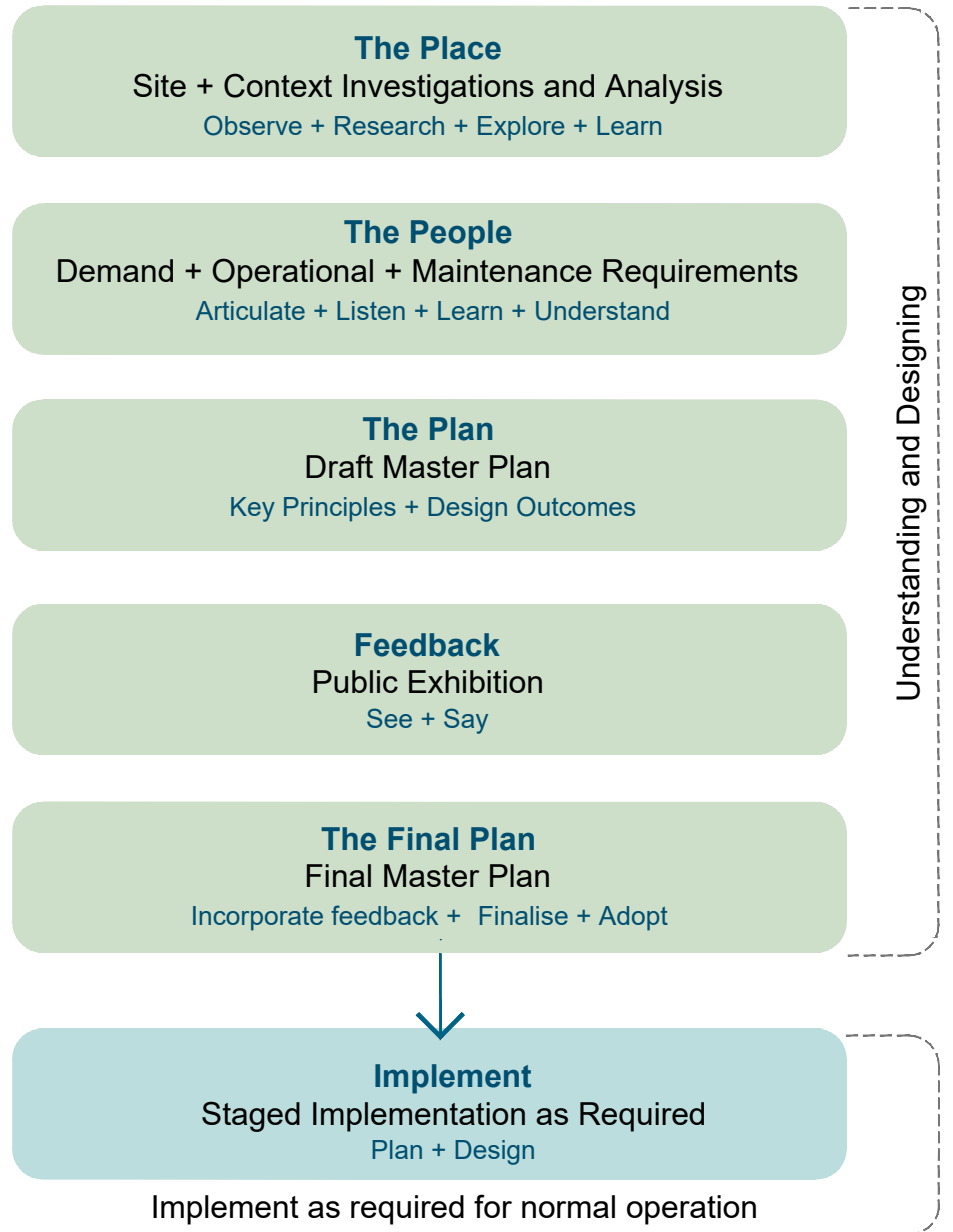
**Project Objectives**

This Draft Master Plan is a key outcome identified by Ballina Shire Council's Delivery Program and Operational Plan for 2021 - 2025 (HE3.2j - Implement Alstonville and East Ballina Cemetery Master Plans).

In addition to this, the master plan articulates the future expansion of the cemetery and the operational requirements and maintenance needs into a long term vision, including:

- determining the capacity of the cemetery for future burials and niche interments, and
- setting a long term vision for the cemetery which guides the physical development and growth in an efficient manner and addresses operational and maintenance needs.

**PROCESS**



Understanding and Designing



## THE PLACE

### General Description

The cemetery is located east of the village of Alstonville and accessed from Alstonville Cemetery Road south of the Bruxner Highway. The cemetery contains a diversity of existing interment types including:

- burial plots (traditional religious and non-denominational monuments)
- burial plots (single memorial beam and plaque)
- niches (in old and new columbarium walls)
- memorial garden allotments.

Vacant land is available at the western and southern ends of the cemetery to accommodate future interments. Some small areas of interment opportunity may also be available throughout the existing sections with access for hearse and operational vehicles being a primary consideration.

### Zoning

All land parcels are zoned RU1 Primary Production under Ballina Shire Council's LEP 2012.

### Tenure

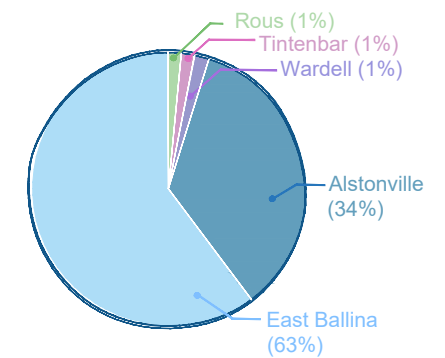
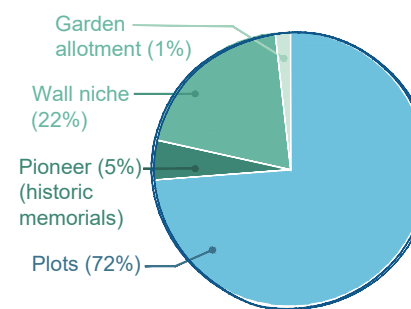
The land is currently Ballina Shire Council owned land (Crown land devolved to Council). Part of Lot 378 D.P. 72909 is subject to a Native Title claim and excluded from the master plan area.

### Other Features

- Alstonville Cemetery (including all 4 lots and the adjacent unformed road) are listed as an item of locally significant environmental heritage (I4) in Schedule 5 Part 1 of Ballina Shire Local Environmental Plan.
- Local Landcare groups have been active in regenerating land to the south of the cemetery where a Big Scrub rainforest remnant exists.
- Large mature trees provide shade and visitor amenity.

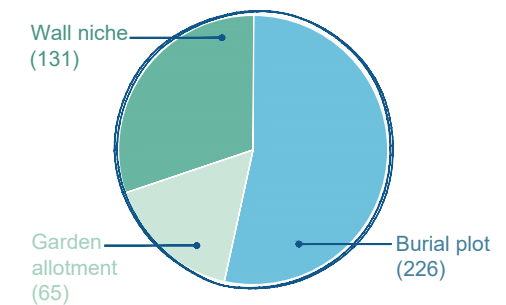
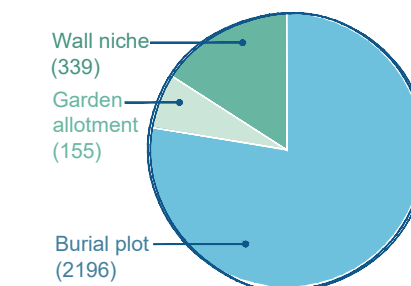
### Ballina Shire Interment Snapshot

There are 6 cemeteries across Ballina Shire (Alstonville, East Ballina, Rous, Tintenbar, Wardell and Pioneer Memorial Cemeteries). Burials are the most common form of interment with a growing demand for wall or garden interments.



### Alstonville Cemetery Interment Snapshot

Alstonville Cemetery is one of the most popular cemeteries in the Shire. It has a picturesque visual amenity with connections to the surrounding rural lands and rainforest, informality, limited hard surfaces, large shade trees and green open space key features of it's character.





**Legend - Existing Features**

- Extent of Alstonville Cemetery Master Plan
- Existing tree (location approx only)
- 1 Burial area (monument)
- 2 Burial area (lawn beam)
- 3 Columbariums
- 4 Memorial garden area
- 5 Undesirable trees (weed species)
- 6 Car parking area
- 7 Informal vehicle access tracks / corridors
- 8 Equipment storage shed
- 9 Furniture
- 10 Entry sign


Aerial Photo Reference: NSW Spatial Services 2021 Scale at A3 - 1:1000  
 Important Note: The cadastral boundaries are approximate only and subject to detailed cadastral investigations.  
 Tree locations and burial areas have been mapped from aerial photography and should be verified by survey. Unmarked burials may be present.





Photo: Alstonville Cemetery Columbarium Niche Wall (2023)


**DESIGN PRINCIPLES**


The cemetery master plan articulates the future expansion of the cemetery and the operational requirements and maintenance needs into a long term vision. The master plan adopts the following broad design principles:


- 

Maximise interment opportunities.
- 

Maintain a variety of interment options reflecting current preferences, trends, religious, cultural and spiritual beliefs.
- 

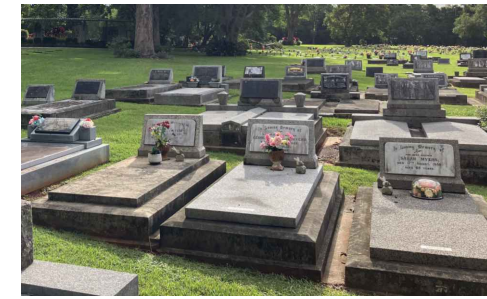
Improve accessibility to the cemetery facilities for all.
- 

Explore opportunities for compatible alternative uses which benefit the community.
- 

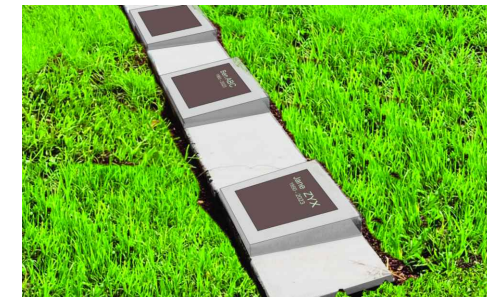
Improve operational aspects of the cemetery to facilitate improved vehicle access and efficient and cost effective maintenance.
- 

Retain the cemetery as a low-key and peaceful environment where the heritage and natural features of the site and context predominate.

**INTERMENT TYPES**



**Burial (Monument)**  
Burial with traditional monument memorial.



**Burial Beam (Single)**  
(Matches existing)  
A 0.33m wide concrete beam, single sided with 2.4m x 1.2m burial grassed plot and 0.3m separation space at toe of plot. This makes a grass area between beams of 2.7m. Plaques are located on an angled and elevated plinth.



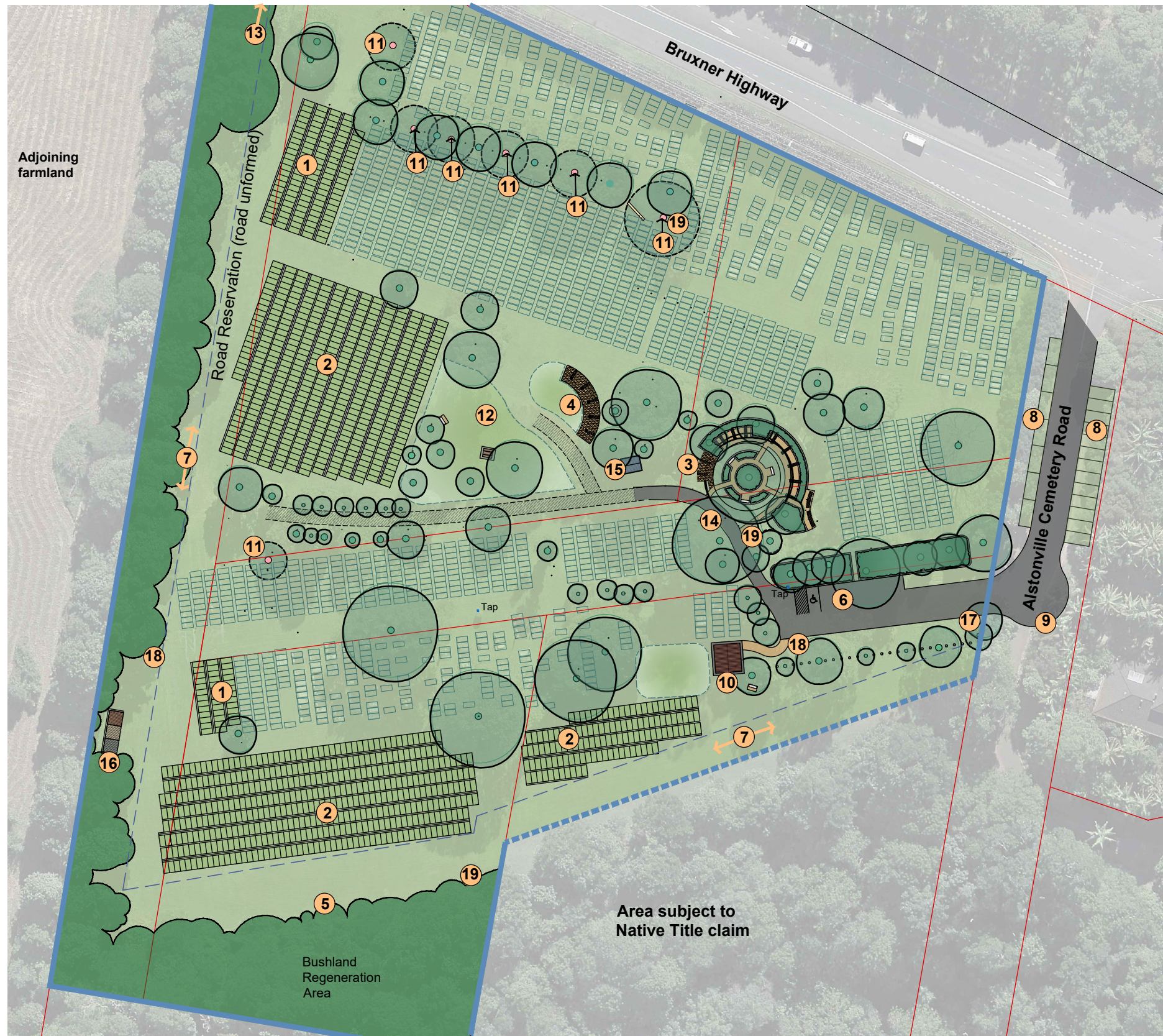
**Burial Beam (Double)**  
A 0.6m wide concrete beam, double sided with 2.4m x 1.2m burial grassed plot and 0.3m separation space at toe of plot. This makes a grass area between beams of 5.1m. Plaques are located on an angled and elevated plinth (head to head).



**Columbarium (Niche wall)**  
Urn placed in the columbarium wall with a plaque. New columbarium walls to match the existing design with walls named after local plant species.



**Garden Memorial (Garden allotment)**  
Urn placed in the garden area with a plaque on a garden edge to match existing detail.



## PROPOSED FEATURES AND WORKS (LEGEND FOR SHEETS 05+ 06 + 07)

- 1 New lawn burial area type A- Single memorial beam configuration to match existing style (sloper headstone) (approximately 191 new single interments over the cemetery)
- 2 New lawn burial area type B - Predominantly back-to-back memorial beam configuration with some single beams at extremities to allow wider open space areas for hearse and operational vehicle access (refer to beam typologies). (approximately 950 new double interments over the cemetery)
- 3 Columbarium - Extend existing radial columbarium area with columns named after locally native plant species (approximately 120 interments)
- 4 New columbariums with columns named after locally native plant species (approximately 300 new interments)
- 5 Bushland regeneration area
- 6 Carparking - retain the existing carparking arrangement with grassed edges to protect the tree root zone and mark an accessible carparking space at the western end
- 7 Perimetre circulation space and tree root protection zone (7-12m wide) - informal parking for hearse and ceremony vehicles at the extremity of the site and a corridor for vehicle access and circulation
- 8 Grassed on-street carparking formalised with signage
- 9 Vehicle turn around area and "private driveway" sign
- 10 Ceremony area - Small shelter structure with accessible pathway connected to car parking area
- 11 Weed tree replacement - Remove the row of *Koelreuteria paniculata*, *Spathodea campanulata* and the *Celtis sinensis* and replace with locally native tree species in equal quantities. Suitable species might include *Eucalyptus microcorys* (Tallow wood), *Syzygium moorei* (Durobby), *Acmena ingens* (Red apple), *Lophostemon confertus* (Brush box), *Syzygium floribundum* (Weeping lilly pilly).
- 12 Central seating and rest area
- 13 Secondary and emergency vehicle access (gated)
- 14 Driveway access to cemetery area (The existing surface is being lifted by tree roots. Install new bitumen surface to consistent grades over existing driveway to improve accessibility taking care to protect trees).
- 15 Maintenance equipment shed (existing shed retained)
- 16 Stockpile areas (mulch, metal dust, spoil)
- 17 Cemetery name sign (retained)
- 18 Cemetery layout map
- 19 Interpretative signage (forest regeneration area, cemetery history, cultural heritage)

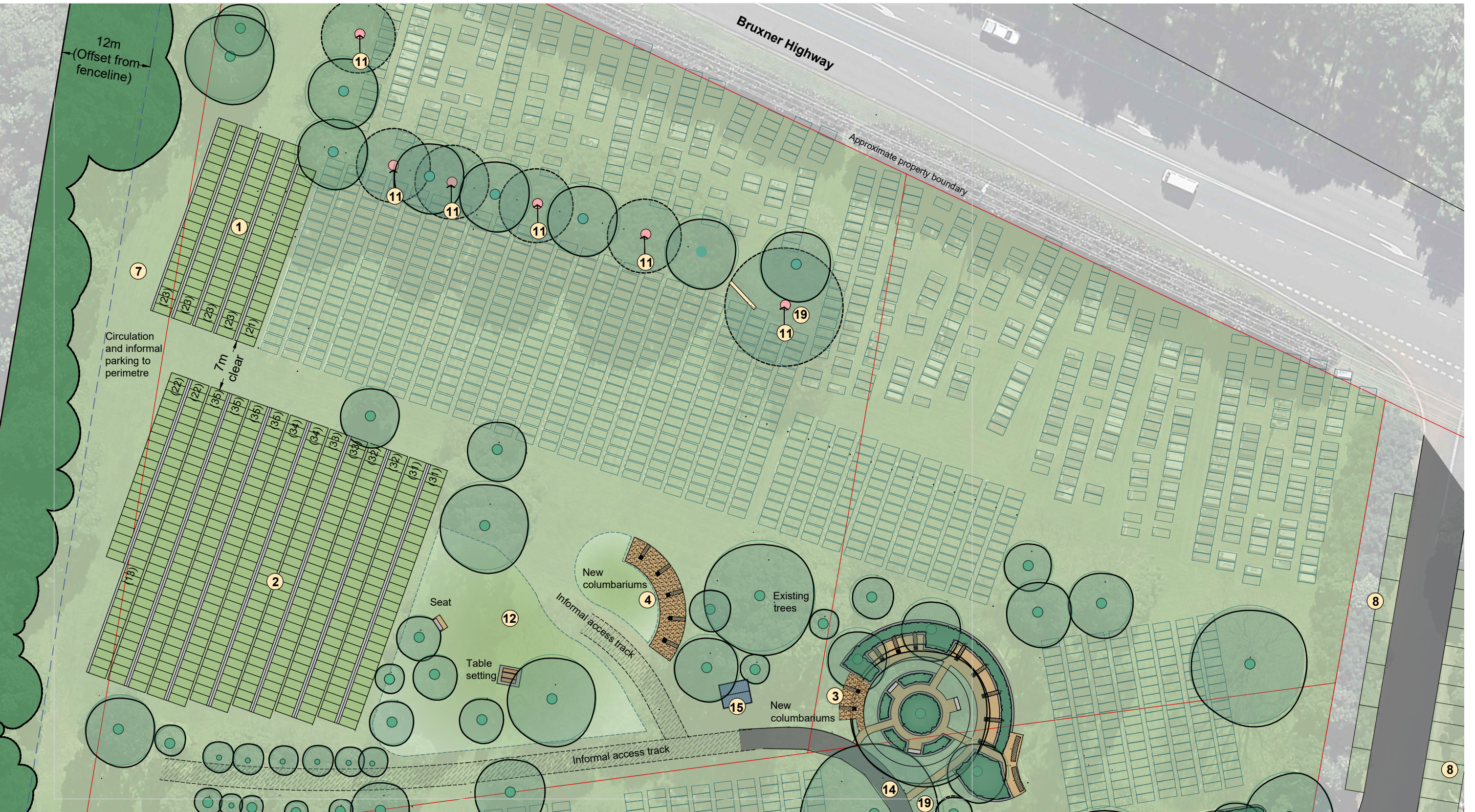
Note: Existing water points (taps) remain

Refer to Sheets 07 and 08 for the works 'up close'.

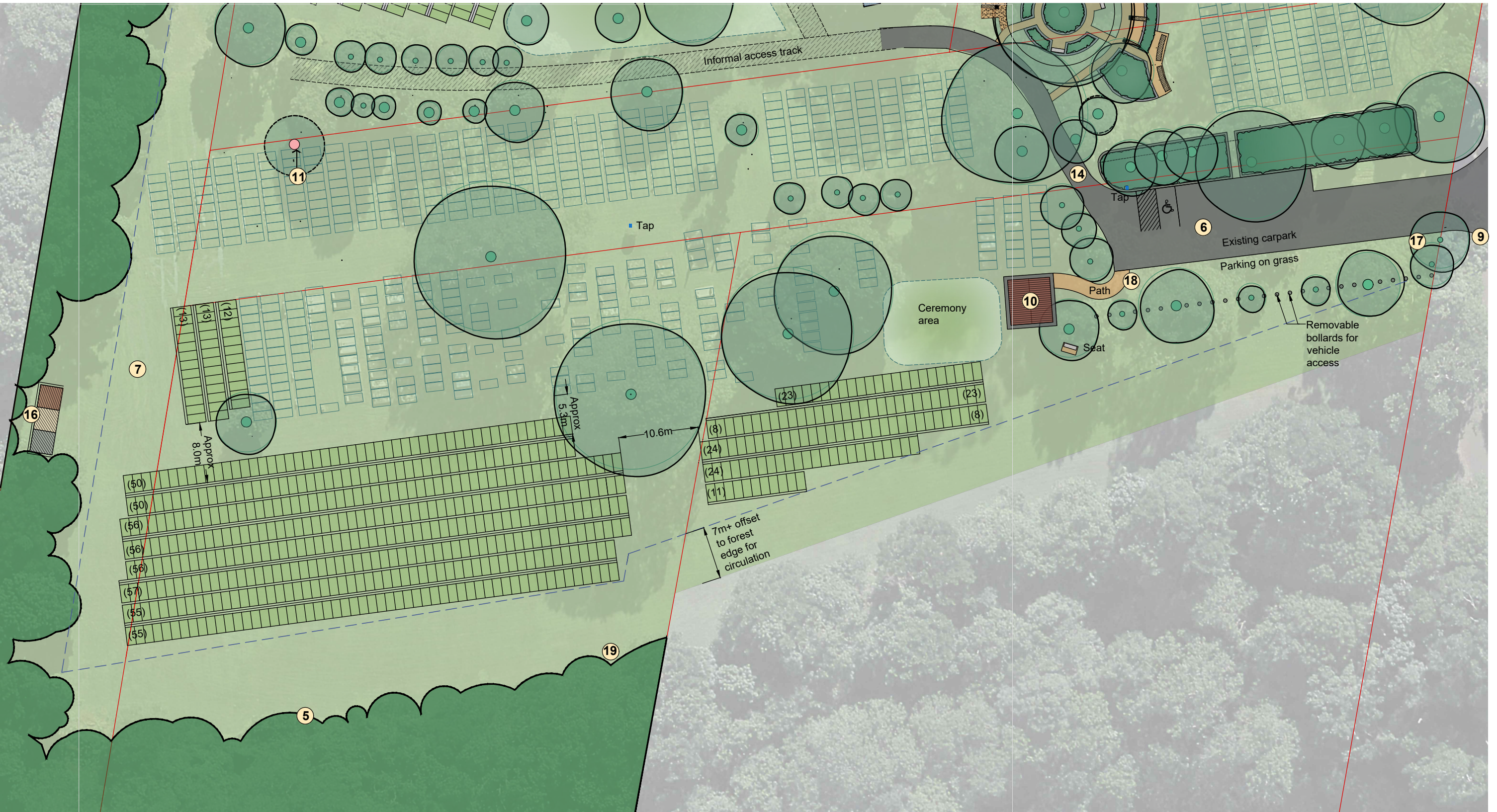
Aerial Photo Reference: NSW Spatial Services 2021 Scale at A3 - 1:1000

Important Note: The cadastral boundaries are approximate only and subject to detailed cadastral investigations.

Tree locations and burial areas have been mapped from aerial photography and should be verified by survey. Unmarked burials may be present.



Aerial Photo Reference: NSW Spatial Services 2021 Scale at A3 - 1:1000 This is a conceptual plan only and is subject to detailed design.  
 Important Note: The cadastral boundaries are approximate only and subject to detailed cadastral investigations.  
 Tree locations and burial areas have been mapped from aerial photography and should be verified by survey. Unmarked burials may be present.



Aerial Photo Reference: NSW Spatial Services 2021 Scale at A3 - 1:1000 This is a conceptual plan only and is subject to detailed design.  
 Important Note: The cadastral boundaries are approximate only and subject to detailed cadastral investigations.  
 Tree locations and burial areas have been mapped from aerial photography and should be verified by survey. Unmarked burials may be present.

Refer to Sheets 07 and 08 for the works 'up close'.





Photo: Alstonville Cemetery (2023)

**MASTER PLAN INTERMENT SNAPSHOT**

In 2022 there were 50 interments at Alstonville Cemetery (36 burial plots, 6 columbarium niches, 8 garden memorial allotments). The capacity of the cemetery into the future is outlined below.

- 2690

**Existing Known Interments**  
(2196 Burial plots + 339 Columbarium niches + 155 Garden memorial allotments)
- 592

**Existing Vacant Interment Places**  
(31 Burial plots + 268 Columbarium niches + 293 Garden memorial allotments)
- 1141

**Proposed New Burial Plots (Lawn beams)**  
(191 single beam burial plots + 950 double beam burial plots)
- 420

**Proposed New Columbarium Niches**  
(7 new columbarium walls with 60 niches in each wall)
- 2153

**Alstonville Cemetery  
Total Future Interment Capacity**  
(1172 Lawn burial plots + 688 Columbarium niches + 293 Garden memorial allotments)

These figures are based upon single depth burials only. At current interment rates, and assuming an unbiased uptake of interment types, this equates to a capacity of approximately 43 years.

**MATERIALITY**

**CEREMONY AREA SHELTER**

Type: Gable roof form open at ends  
 Dimensions: Extent of roof 5.6 x 6.0m.  
 Materials: Timber frame with colourbond roof  
 (Image is from LandmarkPro 'Mulgrave K503' and is indicative only)



**PATHWAYS**

Accessible pathway: Coloured concrete to match others near the columbarium



**COLUMBARIUM WALLS**

To match existing walls



# BALLINA SHIRE COUNCIL

## ALSTONVILLE CEMETERY MASTER PLAN



Ballina Shire Council  
40 Cherry Street Ballina NSW 2478  
p: 1300 864 444 | e: council@ballina.nsw.gov.au

[ballina.nsw.gov.au](http://ballina.nsw.gov.au)