

Recurring *parking offences*

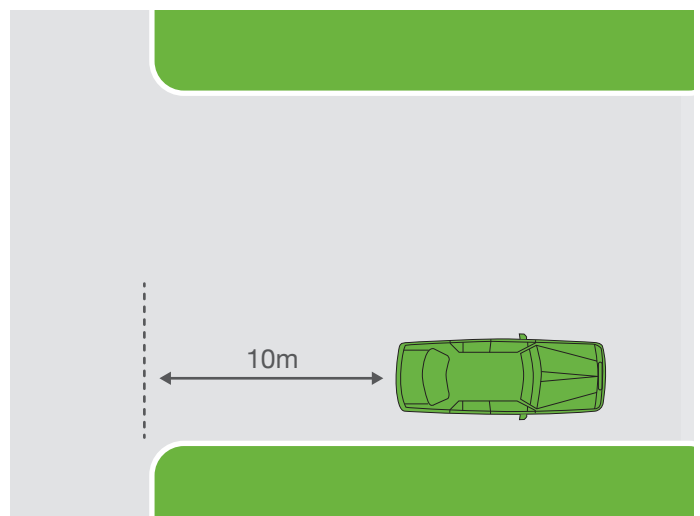
Recurring parking offences that do not appear to be well known but which can give rise to serious safety situations if ignored.

INTERSECTIONS – NSW ROAD RULE 170

It is an offence to stop within 10 metres of an intersection (with no traffic lights) unless a sign is present that indicates that you can park closer. For an intersection with traffic lights it is an offence to park closer than 20 metres unless a sign indicates that you can park closer.

By ignoring this rule you create a hazardous situation for other vehicles and pedestrians as vision is obstructed and space for turning vehicles is restricted.

The fine exceeds \$340 with the loss of 2 demerit points. In school zones the fine exceeds \$450 with the loss of 2 demerit points.



YELLOW LINE PAINTED ON THE SIDE OF THE ROAD – NSW ROAD RULE 169

A continuous yellow line indicates that you cannot stop on that stretch of road. No stopping zones can be indicated by a sign and yellow line or one or both. Such zones have been created to address a safety issue.

The fine exceeds \$260.

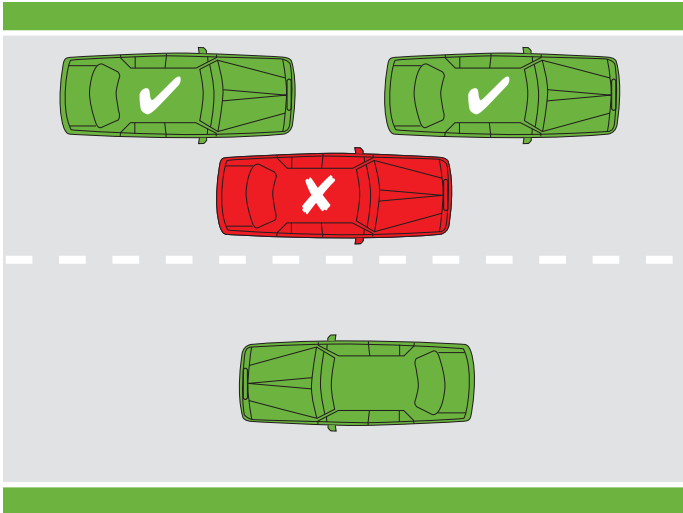


DOUBLE PARKING – NSW ROAD RULE 189

It is an offence and very dangerous to stop outside vehicles already parked on the side of the road. This is an offence that quite often occurs in school zones and is particularly dangerous at times when children are arriving or leaving school.

It creates obstruction to other vehicles and presents a real danger to children leaving or entering a vehicle.

The fine exceeds \$260. In school zones the fine exceeds \$340 with the loss of 2 demerit points.

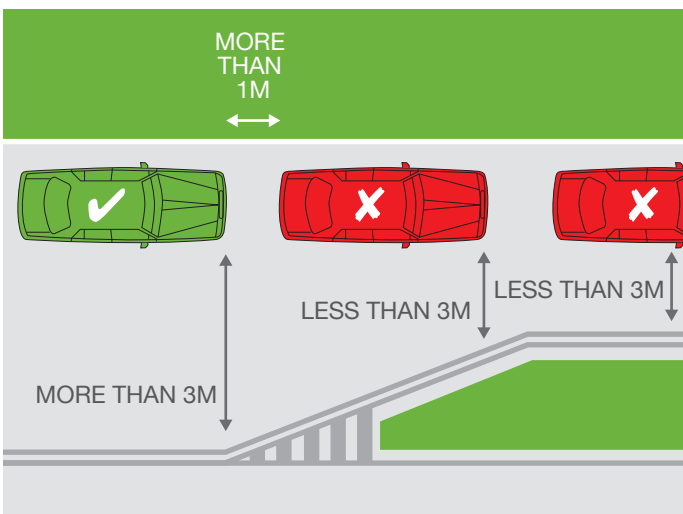


3 METRES FROM CENTRELINE OR OTHER SIDE OF THE ROAD – NSW ROAD RULE 208

Parking any closer than 3 metres does not allow enough clearance for other vehicles to pass safely.

If there is an unbroken centerline you must not park any closer than 3 metres. If there is no centerline then you must leave at least 3 metres clearance from the other side of the road.

The fine exceeds \$260. In school zones the fine exceeds \$340 with the loss of 2 demerit points.



For more information please contact Ballina Shire Council on 1300 864 444 or visit ballina.nsw.gov.au