

FORESHORE IMPROVEMENT WORKS LAKE AINSWORTH, LENNOX HEAD

DRAWING No: LHR30.061

JUNE 2018

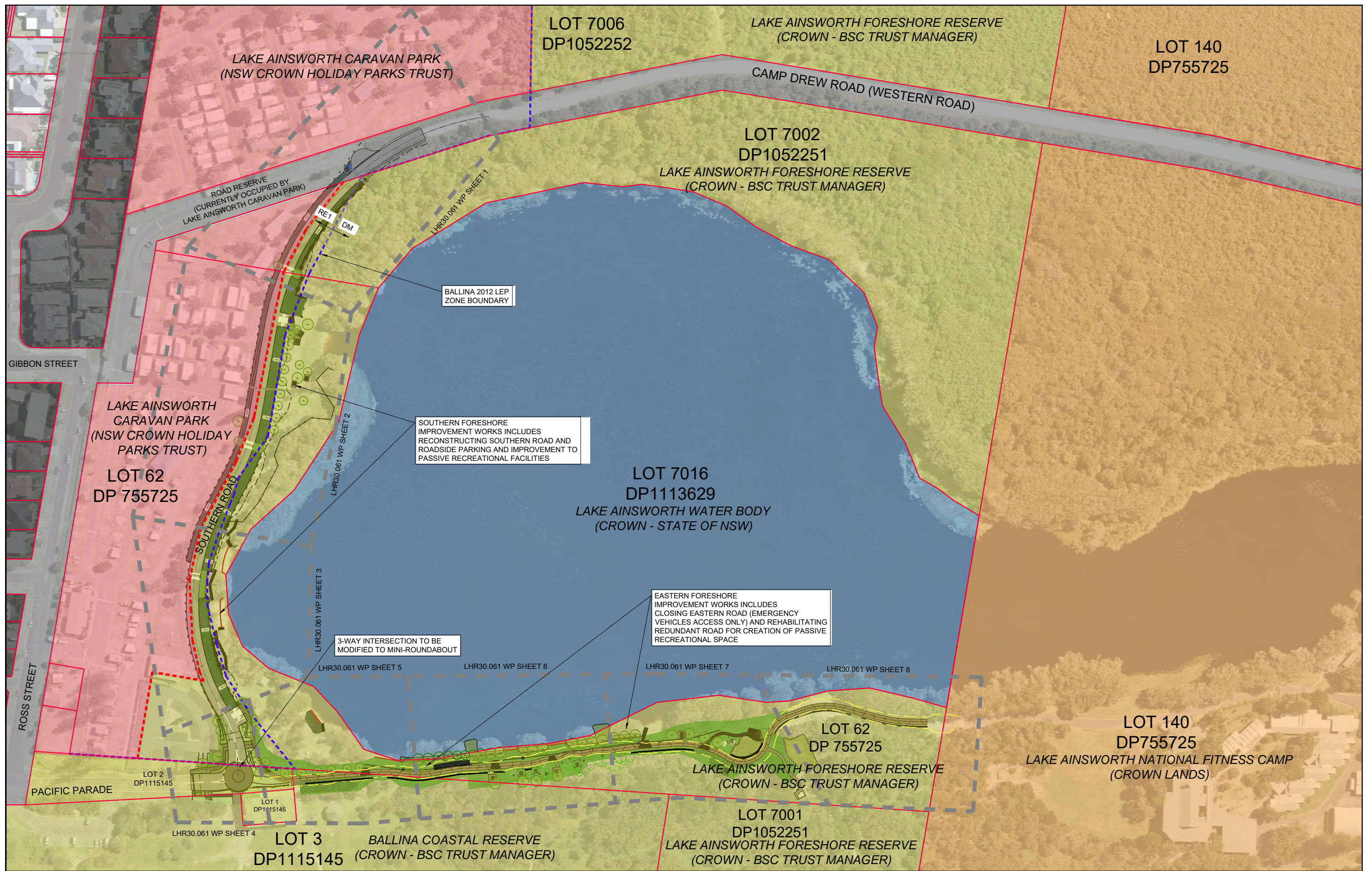
GENERAL WORKS DRAWINGS

DRAWING REGISTER

DRAWING	SHEET	ISSUE	DATE	TITLE
LHR30.061/OP	1 OF 1	B	3/11/2017	OVERALL PLAN
LHR30.061/WP	1 OF 8	B	3/11/2017	SOUTHERN FORESHORE GENERAL WORKS PLAN (CH0 TO CH105)
LHR30.061/WP	2 OF 8	B	3/11/2017	SOUTHERN FORESHORE GENERAL WORKS PLAN (CH105 TO CH255)
LHR30.061/WP	3 OF 8	B	3/11/2017	SOUTHERN FORESHORE GENERAL WORKS PLAN (CH255 TO CH380)
LHR30.061/WP	4 OF 8	B	3/11/2017	INTERSECTION GENERAL WORKS PLAN
LHR30.061/WP	5 OF 8	C	4/6/2018	EASTERN FORESHORE GENERAL WORKS PLAN AND LONGITUDINAL SECTION (CH0 TO CH120)
LHR30.061/WP	6 OF 8	C	4/6/2018	EASTERN FORESHORE GENERAL WORKS PLAN AND LONGITUDINAL SECTION (CH120 TO CH240)
LHR30.061/WP	7 OF 8	C	4/6/2018	EASTERN FORESHORE GENERAL WORKS PLAN AND LONGITUDINAL SECTION (CH240 TO CH360)
LHR30.061/WP	8 OF 8	C	4/6/2018	EASTERN FORESHORE GENERAL WORKS PLAN AND LONGITUDINAL SECTION (CH360 TO CH440)
LHR30.061/LS	1 OF 2	B	3/11/2017	SOUTHERN ROAD ALIGNMENT PLAN AND LONGITUDINAL SECTION (CH0 TO CH300)
LHR30.061/LS	2 OF 2	B	3/11/2017	SOUTHERN ROAD ALIGNMENT PLAN AND LONGITUDINAL SECTION (CH300 TO CH380)
LHR30.061/DT	1 OF 1	B	3/11/2017	LOG REVETMENT AND BEACH ACCESS RAMP TYPICAL DETAIL

LOCALITY PLAN





BALLINA 2012 LEP ZONE BOUNDARY

SOUTHERN FORESHORE IMPROVEMENT WORKS INCLUDES RECONSTRUCTING SOUTHERN ROAD AND ROADSIDE PARKING AND IMPROVEMENT TO PASSIVE RECREATIONAL FACILITIES

EASTERN FORESHORE IMPROVEMENT WORKS INCLUDES CLOSING EASTERN ROAD (EMERGENCY VEHICLES ACCESS ONLY) AND REHABILITATING REDUNDANT ROAD FOR CREATION OF PASSIVE RECREATIONAL SPACE

3-WAY INTERSECTION TO BE MODIFIED TO MINI-ROUNDBOUT

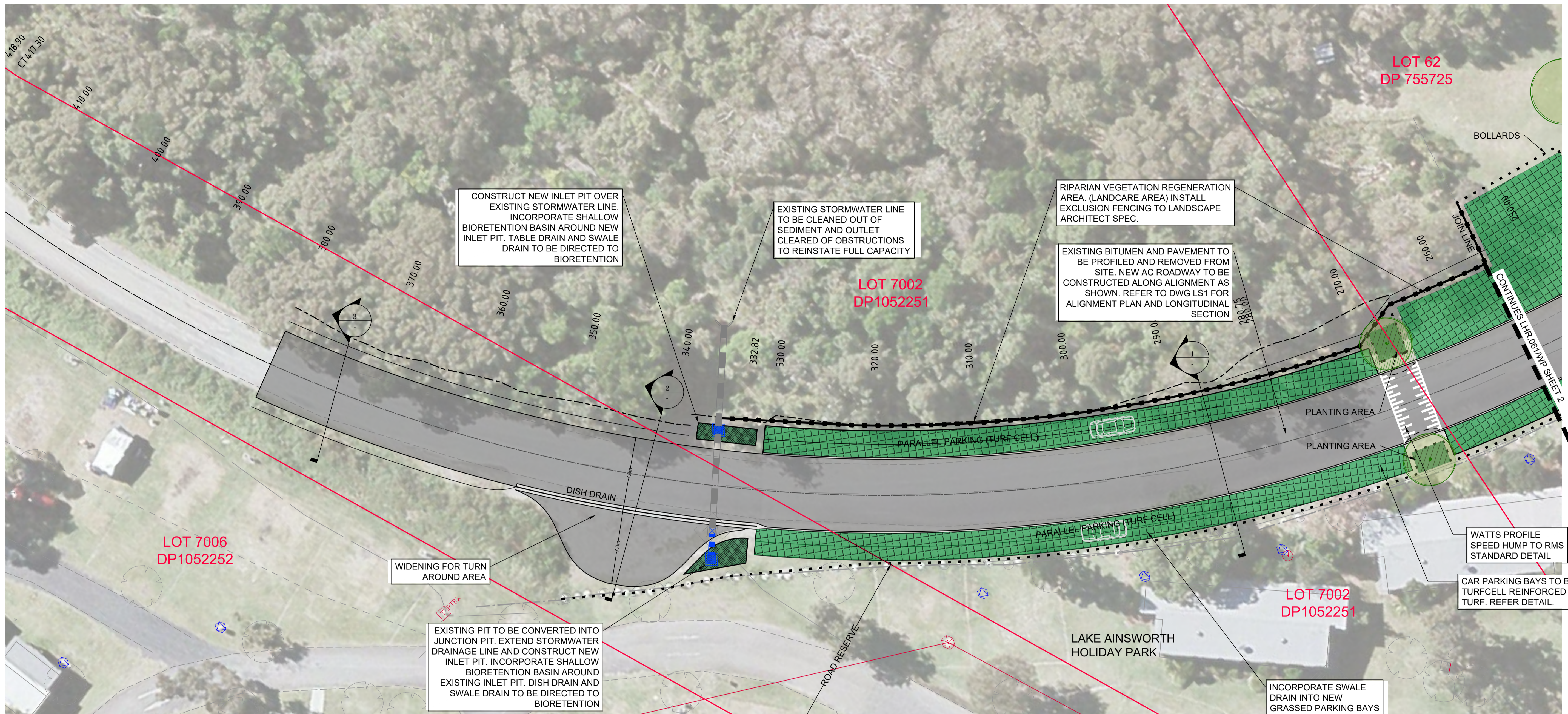
LEGEND	
	PRIVATE PROPERTY
	ROAD RESERVE
	CROWN RESERVE LAKE AINSWORTH FORESHORE RESERVE (CROWN - BSC TRUST MANAGER)
	CROWN RESERVE SEVEN MILE BEACH FORESHORE RESERVE (BSC TRUST MANAGER)
	CROWN RESERVE - LAKE AINSWORTH FOR ACCESS AND PUBLIC REQUIREMENTS AND OTHER (STATE OF NSW)
	PROPERTY BOUNDARY
	CROWN TRUST BOUNDARY
	BALLINA 2012 LEP ZONE BOUNDARY
	CROWN RESERVE (NSW CROWN HOLIDAY PARKS TRUST)
	CROWN RESERVE (LAKE AINSWORTH NATIONAL FITNESS CAMP)

No.	Date	By	Change	X'd
B	3/11/17	PJB	ISSUED FOR PART V ASSESSMENT	
A	27/10/17	PJB	DRAFT FOR REVIEW	
Amendments				



SURVEY	BSC	DESIGNED	PJB
DATE	JULY 2017	DRAWN	PJB
F.B.	L.B.	CHECKED	
DATUM	AHD	APPROVED	
DRAWING	LHR 30_061 LAKE A FORESHORE DA.dwg		
SHEET 1 OF 1			

BALLINA SHIRE COUNCIL		
LAKE AINSWORTH FORESHORE WORKS OVERALL PLAN		
Scale	1:1000	Plan No. LHR30.061/OP A1



CONSTRUCT NEW INLET PIT OVER EXISTING STORMWATER LINE. INCORPORATE SHALLOW BIORETENTION BASIN AROUND NEW INLET PIT. TABLE DRAIN AND SWALE DRAIN TO BE DIRECTED TO BIORETENTION

EXISTING STORMWATER LINE TO BE CLEANED OUT OF SEDIMENT AND OUTLET CLEARED OF OBSTRUCTIONS TO REINSTATE FULL CAPACITY

RIPARIAN VEGETATION REGENERATION AREA. (LANDCARE AREA) INSTALL EXCLUSION FENCING TO LANDSCAPE ARCHITECT SPEC.

EXISTING BITUMEN AND PAVEMENT TO BE PROFILED AND REMOVED FROM SITE. NEW AC ROADWAY TO BE CONSTRUCTED ALONG ALIGNMENT AS SHOWN. REFER TO DWG LS1 FOR ALIGNMENT PLAN AND LONGITUDINAL SECTION

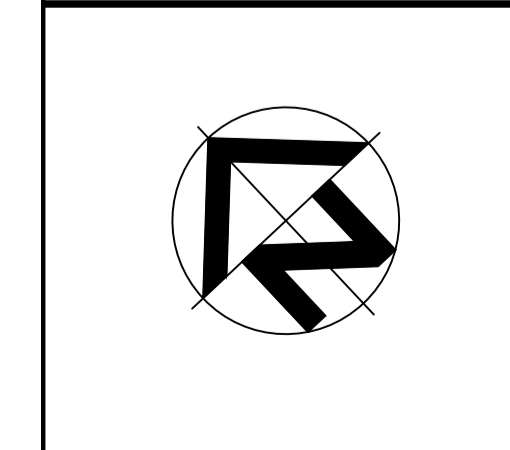
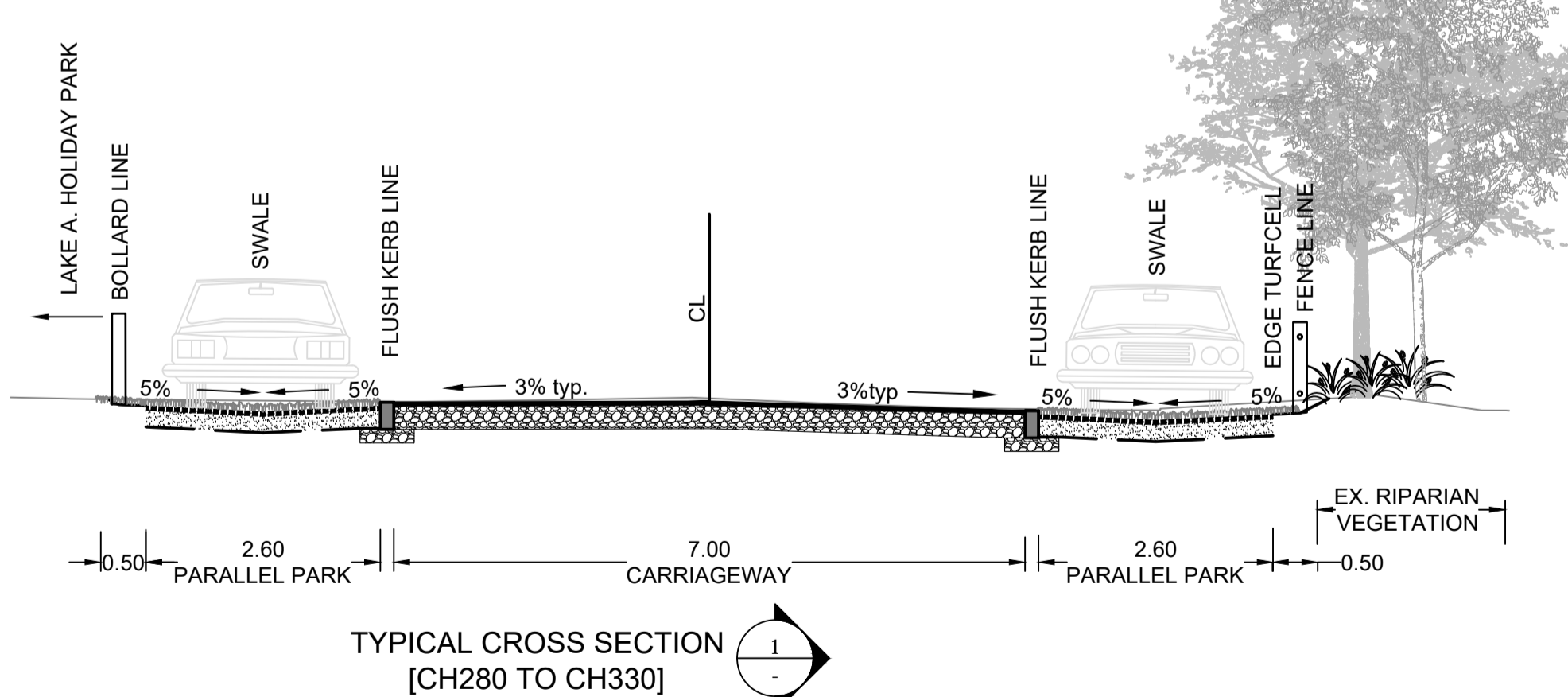
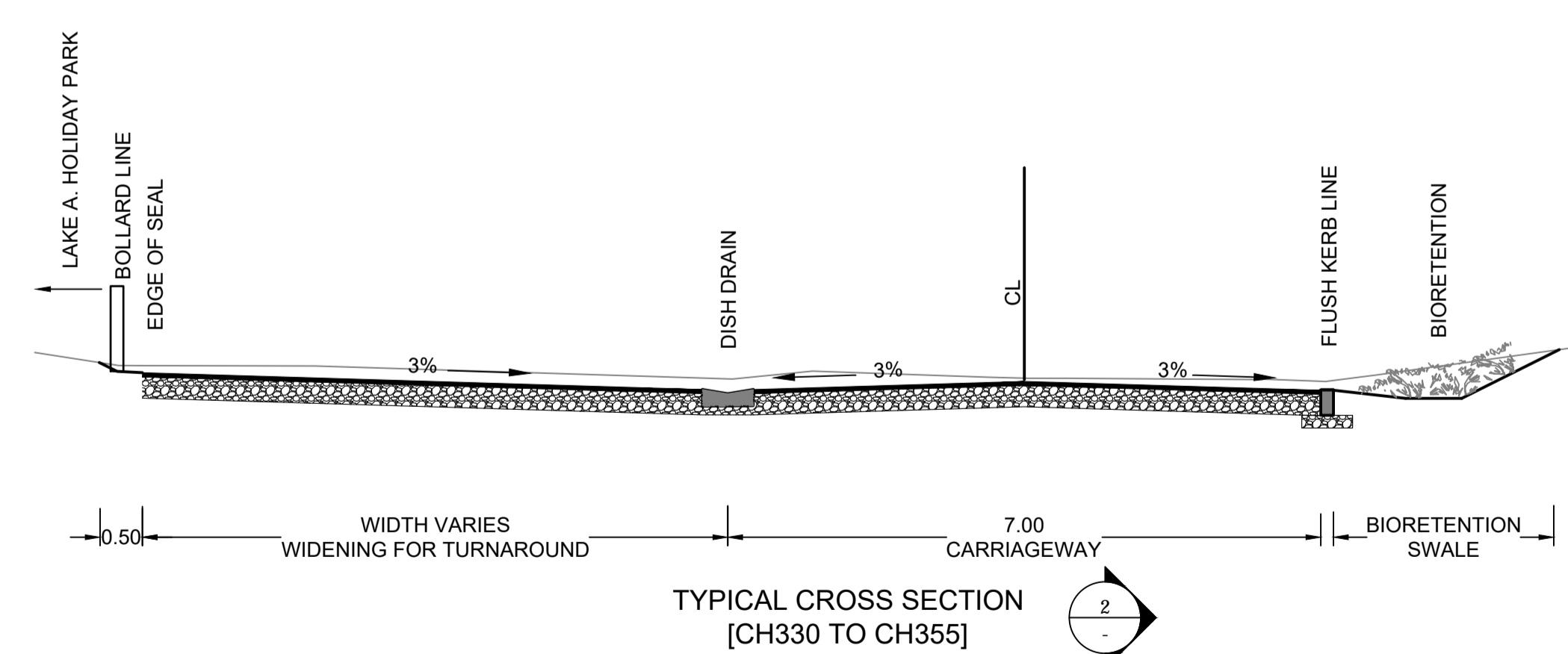
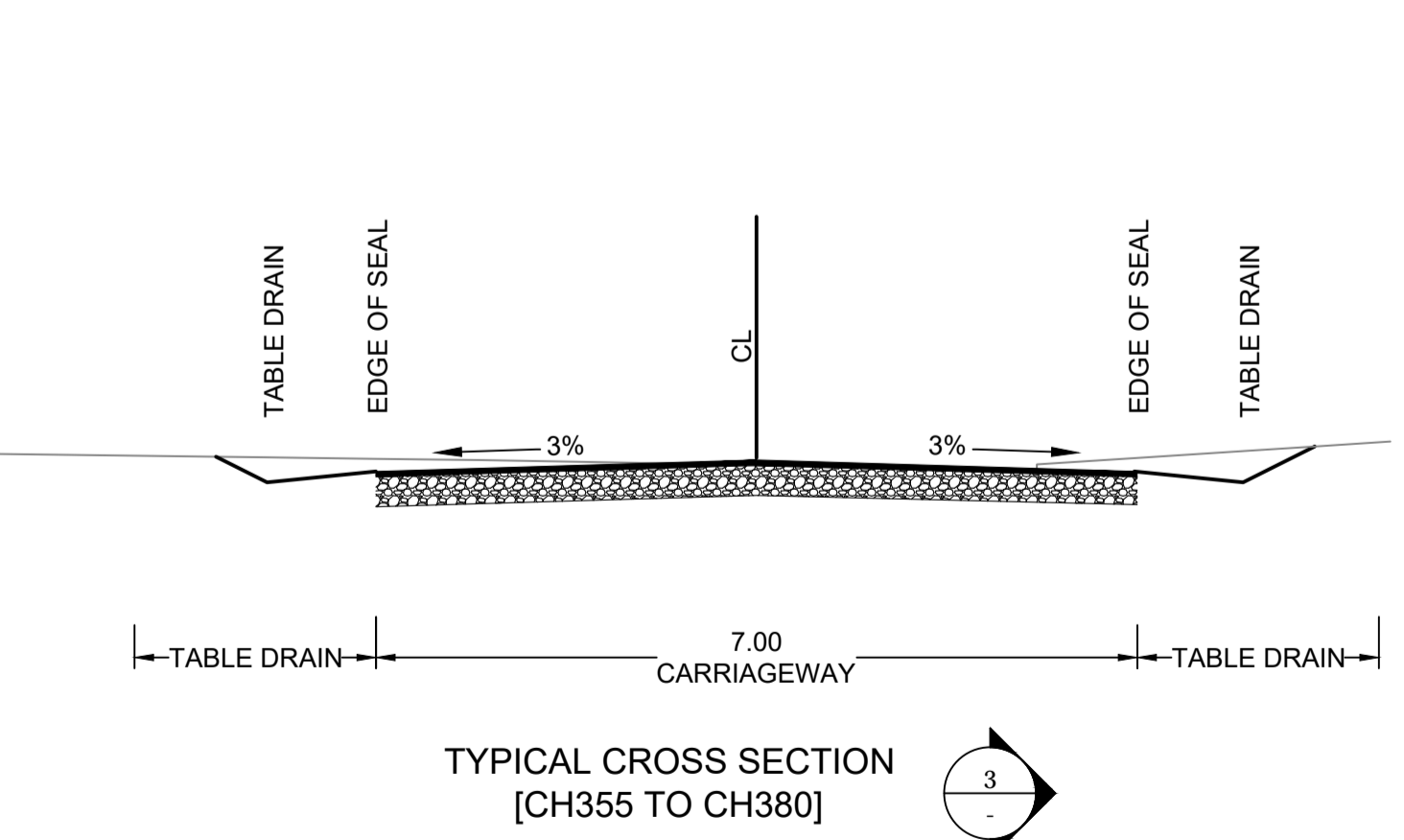
WIDENING FOR TURN AROUND AREA

EXISTING PIT TO BE CONVERTED INTO JUNCTION PIT. EXTEND STORMWATER DRAINAGE LINE AND CONSTRUCT NEW INLET PIT. INCORPORATE SHALLOW BIORETENTION BASIN AROUND EXISTING INLET PIT. DISH DRAIN AND SWALE DRAIN TO BE DIRECTED TO BIORETENTION

WATTS PROFILE SPEED HUMP TO RMS STANDARD DETAIL

CAR PARKING BAYS TO BE TURFCELL REINFORCED TURF. REFER DETAIL.

INCORPORATE SWALE DRAIN INTO NEW GRASSED PARKING BAYS



LEGEND

TELSTRA FIBRE OPTIC CABLE	SIGN	STORMWATER PIPE (NEW)
TELSTRA CABLE	STOP VALVE	LANDSCAPE FENCE (NEW)
UNDER GROUND ELECTRICITY	HYDRANT	BOLLARD LINE (NEW)
OVER HEAD ELECTRICITY	TELSTRA PIT	BOLLARD LINE (EXISTING)
SEWER (GRAVITY)	PP POWER POLE	BOUNDARY
SEWER RISING MAIN (EXISTING)	SP STAY POLE	FK 4.95 FINISHED SURFACE RL
STORMWATER PIPE (EX)	STN/GIN	BIORETENTION
WATER (EX)	SSM/PM	TURFCELL CAR PARKING
FENCE (EX)		LANDSCAPING
EDGE OF BITUMEN (EX)		AC SEAL

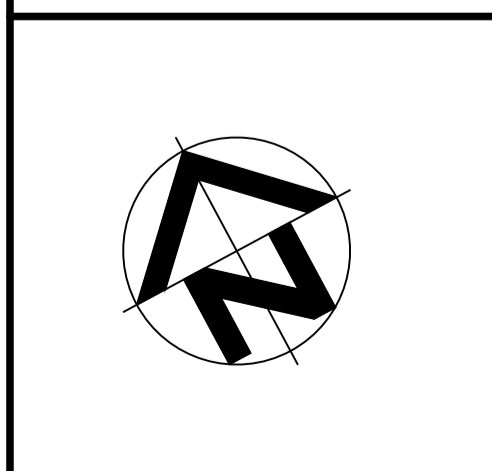
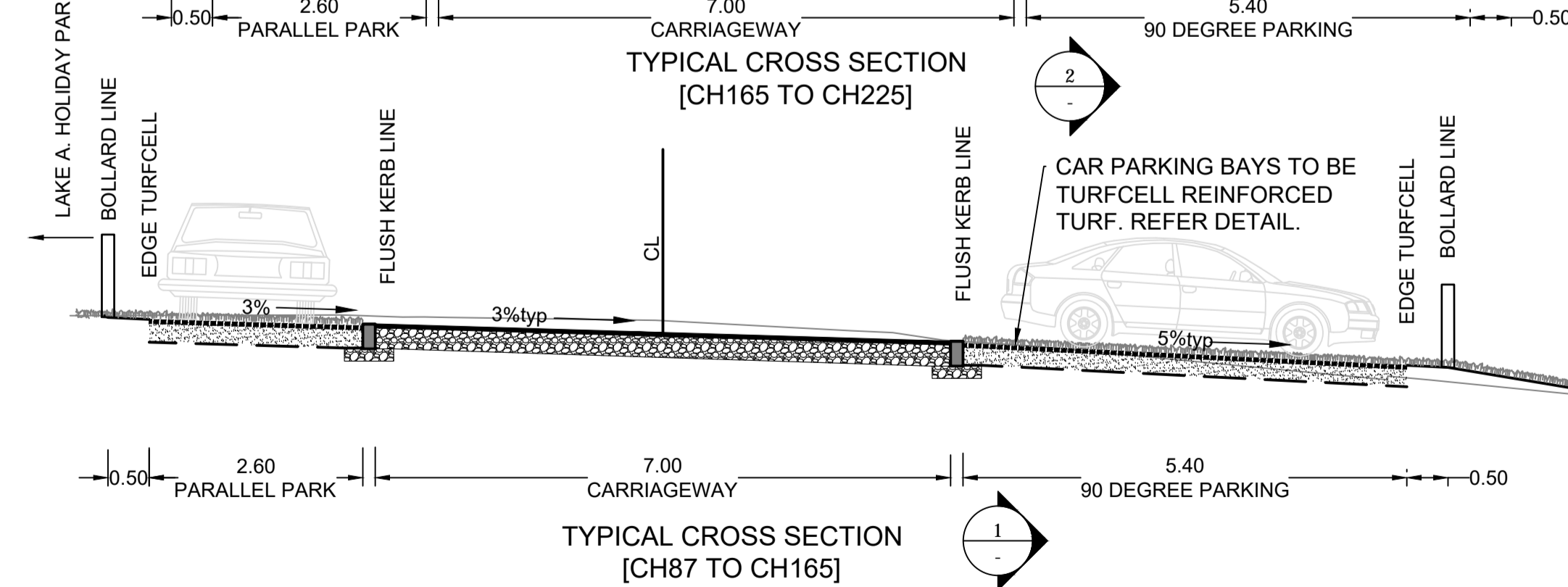
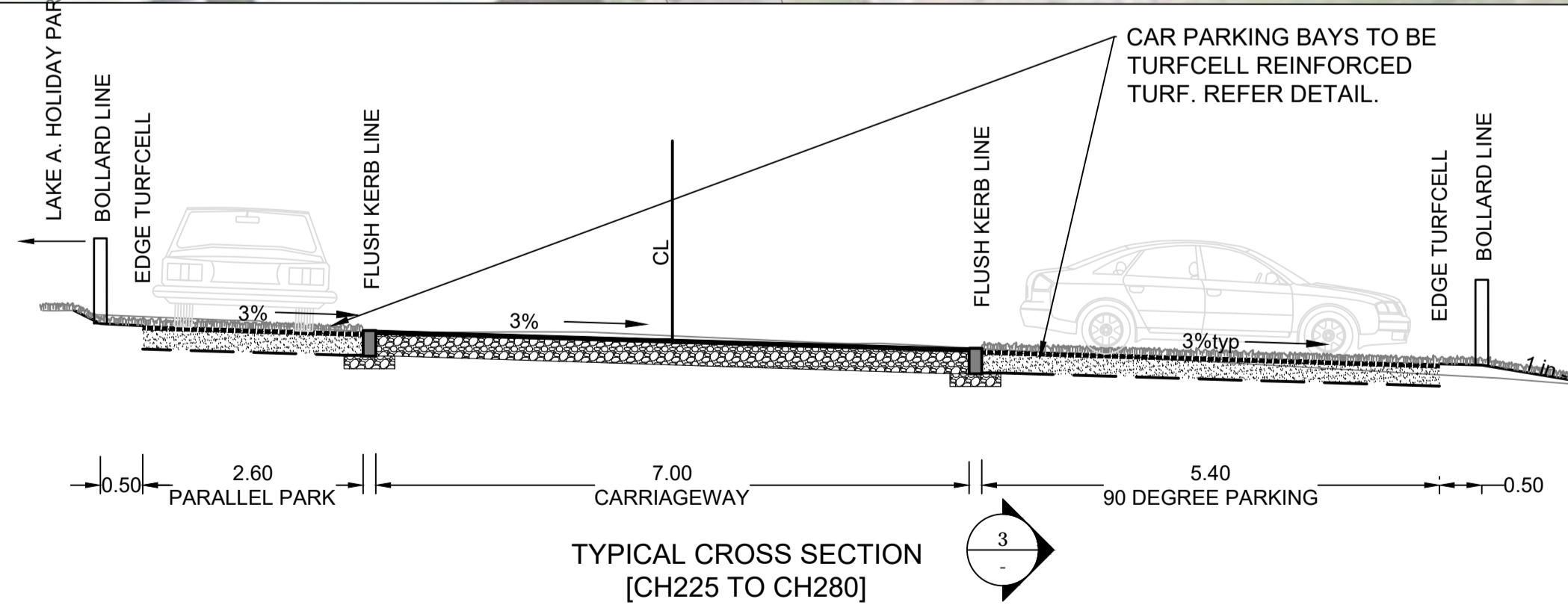
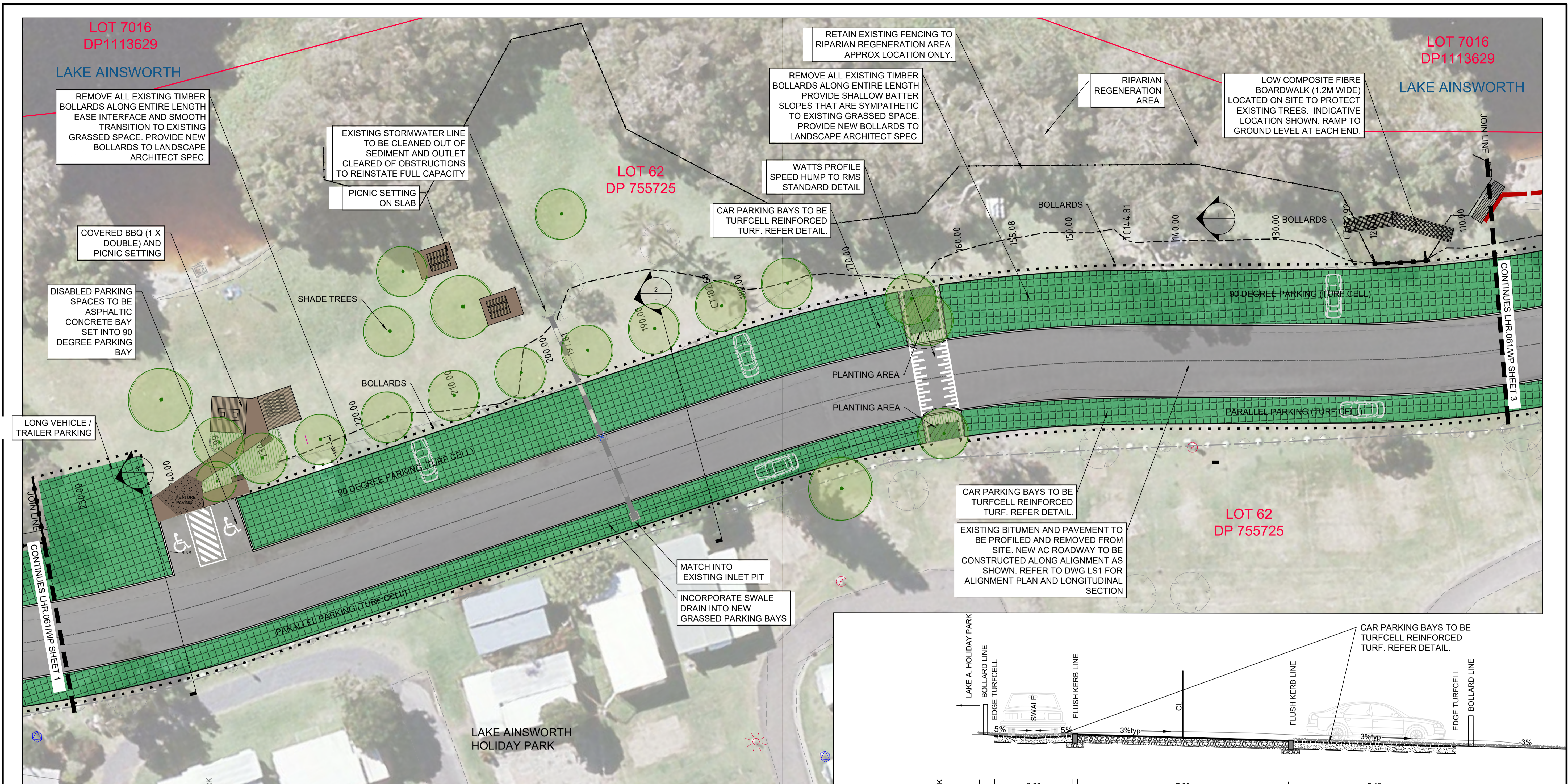
No.	Date	By	Change	X'd
B	3/11/17	PJB	ISSUED FOR PART V ASSESSMENT	
A	27/10/17	PJB	DRAFT FOR REVIEW	
Amendments				

SURVEY BSC		DESIGNED PJB	
DATE JULY 2017		DRAWN PJB	
F.B. L.B.		CHECKED	
DATUM AHD		APPROVED	
DRAWING LHR 30_061 LAKE A FORESHORE DA.dwg			
SHEET 1 OF 8			



BALLINA SHIRE COUNCIL	
LAKE AINSWORTH FORESHORE WORKS	
SOUTHERN FORESHORE GENERAL WORKS PLAN	
AND TYPICAL DETAILS	
Scale	1:200
Plan No.	LHR30.061/WP

Scale	1:200	Plan No.	LHR30.061/WP	A1
-------	-------	----------	--------------	----



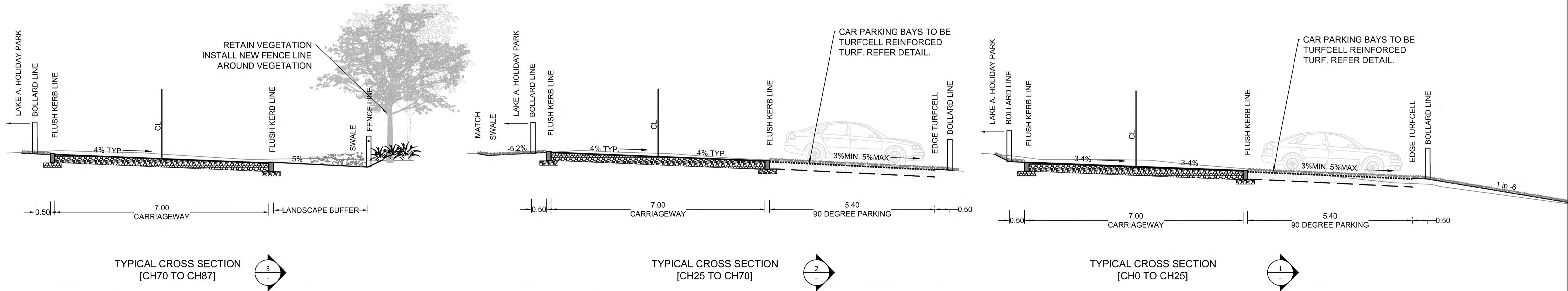
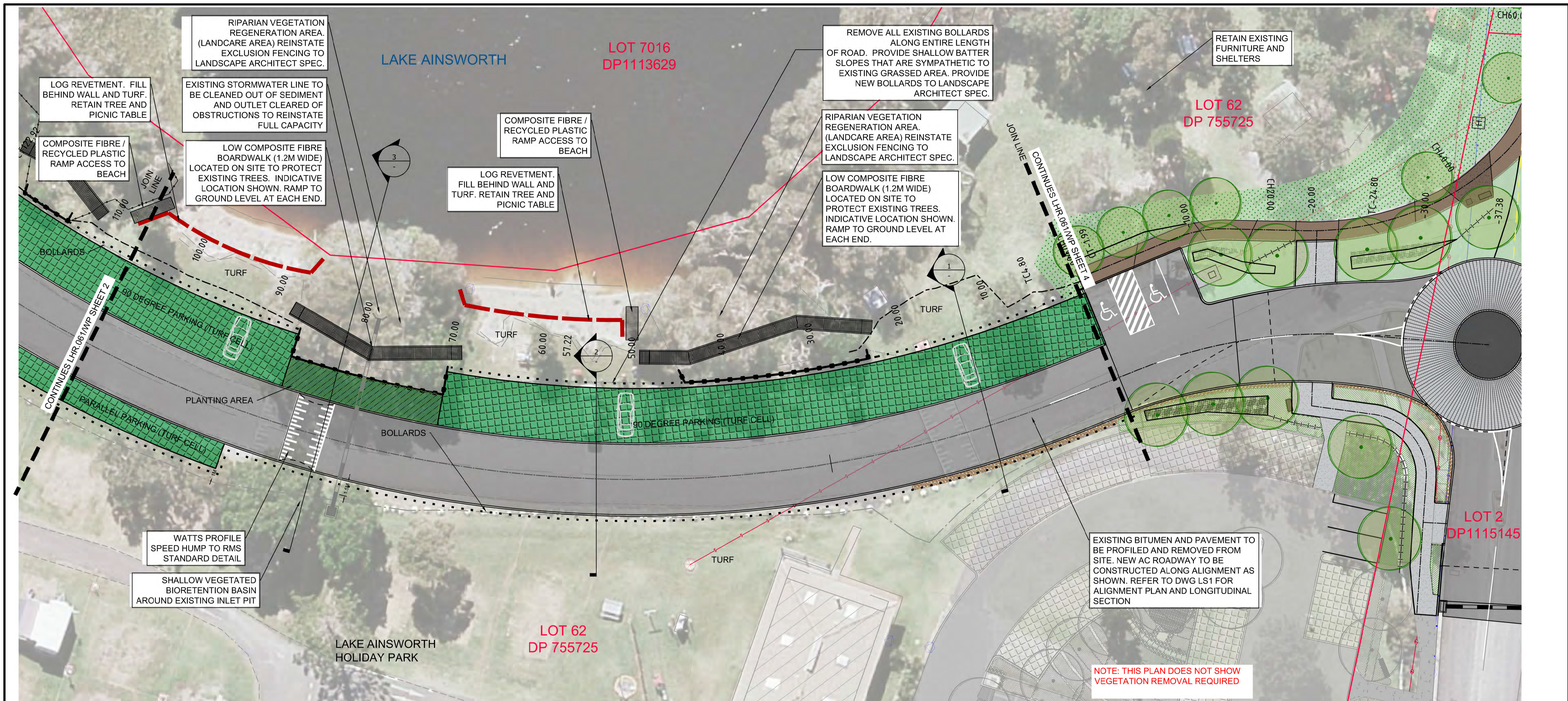
LEGEND	
	TELSTRA FIBRE OPTIC CABLE
	TELSTRA CABLE
	UNDER GROUND ELECTRICITY
	OVER HEAD ELECTRICITY
	SEWER (GRAVITY)
	SEWER RISING MAIN (EXISTING)
	STORMWATER PIPE (EX)
	WATER (EX)
	FENCE (EX)
	EDGE OF BITUMEN (EX)
	SIGN
	STOP VALVE
	HYDRANT
	TELSTRA PIT
	OPP POWER POLE
	SP STAY POLE
	STN/GIN
	SSM/PM
	STORMWATER PIPE (NEW)
	LANDSCAPE FENCE (NEW)
	BOLLARD LINE (NEW)
	BOLLARD LINE (EXISTING)
	BOUNDARY
	FK 4.95 FINISHED SURFACE RL
	BIORETENTION
	TURFCELL CAR PARKING
	LANDSCAPING
	AC SEAL

No.	Date	By	Change	X'd
B	3/11/17	PJB	ISSUED FOR PART V ASSESSMENT	
A	27/10/17	PJB	DRAFT FOR REVIEW	
Amendments				

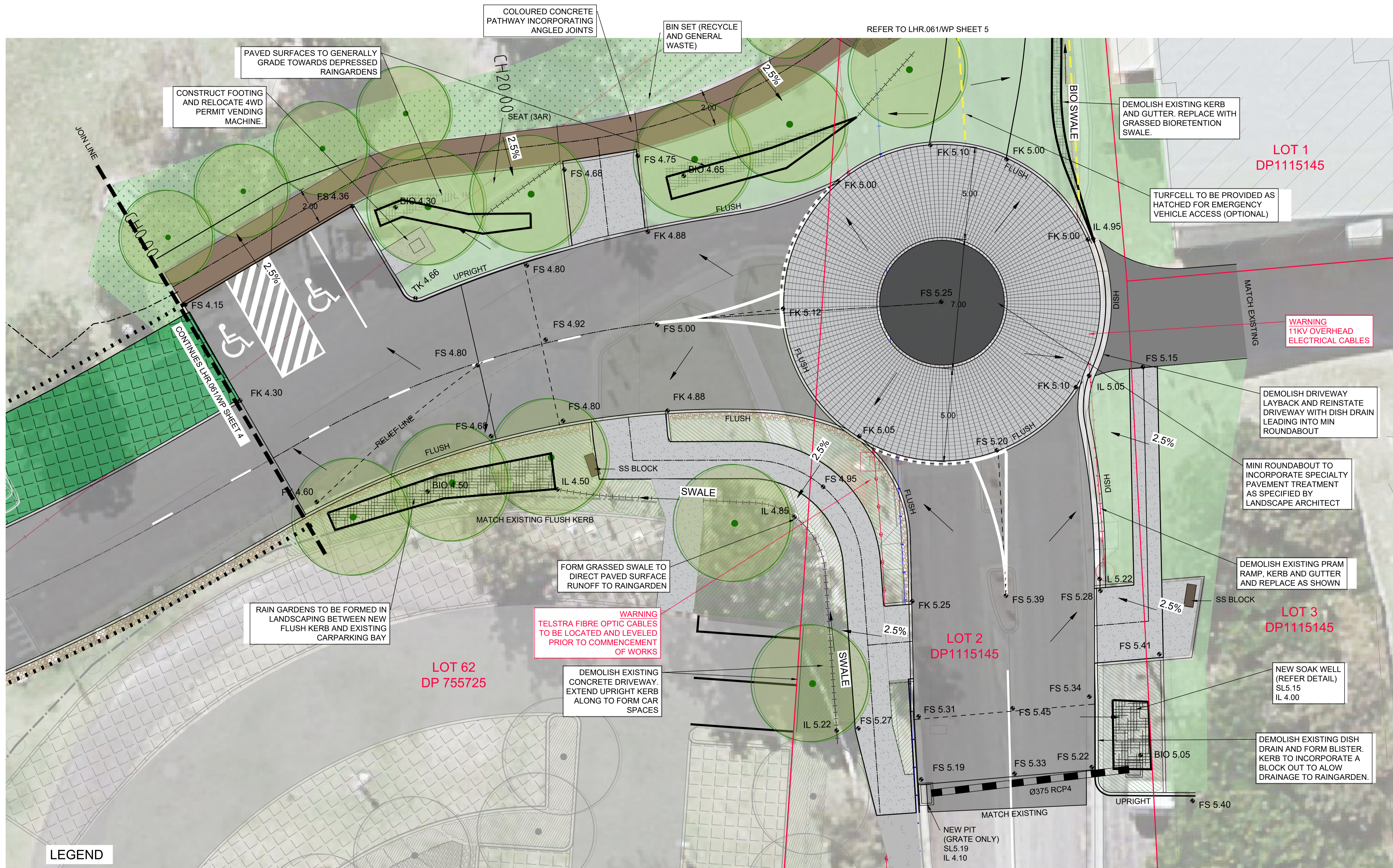


SURVEY	BSC	DESIGNED	PJB
DATE	JULY 2017	DRAWN	PJB
F.B.	L.B.	CHECKED	
DATUM	AHD	APPROVED	
DRAWING LHR_30_061 LAKE A FORESHORE DA.dwg			
SHEET 2 OF 8			

BALLINA SHIRE COUNCIL			
LAKE AINSWORTH FORESHORE WORKS SOUTHERN FORESHORE GENERAL WORKS PLAN AND TYPICAL DETAILS			
Scale	1:200	Plan No.	LHR30.061/WP A1



	LEGEND <ul style="list-style-type: none"> TELSTRA FIBRE OPTIC CABLE TELSTRA CABLE UNDER GROUND ELECTRICITY OVER HEAD ELECTRICITY SEWER (GRAVITY) SEWER RISING MAIN (EXISTING) STORMWATER PIPE (EX) WATER (EX) FENCE (EX) EDGE OF BITUMEN (EX) 	<ul style="list-style-type: none"> SIGN STOP VALVE HYDRANT TELSTRA PIT PP POWER POLE SP STAY POLE STN/GIN SSM/PM 	<ul style="list-style-type: none"> STORMWATER PIPE (NEW) LANDSCAPE FENCE (NEW) BOLLARD LINE (NEW) BOLLARD LINE (EXISTING) BOUNDARY FK 4.95 FINISHED SURFACE RL BIORETENTION LANDSCAPING TURFCELL CAR PARKING AC SEAL 	<table border="1"> <tr> <td>B</td> <td>3/11/17</td> <td>PJB</td> <td>ISSUED FOR PART V ASSESSMENT</td> <td></td> </tr> <tr> <td>A</td> <td>27/10/17</td> <td>PJB</td> <td>DRAFT FOR REVIEW</td> <td></td> </tr> <tr> <td>No.</td> <td>Date</td> <td>By</td> <td>Change</td> <td>X'd</td> </tr> <tr> <td colspan="5" style="text-align: center;">Amendments</td> </tr> </table>	B	3/11/17	PJB	ISSUED FOR PART V ASSESSMENT		A	27/10/17	PJB	DRAFT FOR REVIEW		No.	Date	By	Change	X'd	Amendments						SURVEY BSC DATE JULY 2017 F.B. L.B. DATUM AHD DRAWING LHR_30_061 LAKE A FORESHORE DA.dwg	DESIGNED PJB DRAWN PJB CHECKED APPROVED	BALLINA SHIRE COUNCIL LAKE AINSWORTH FORESHORE WORKS SOUTHERN FORESHORE GENERAL WORKS PLAN AND TYPICAL DETAILS		Scale 1:200 Plan No. LHR30.061/WP	A1
					B	3/11/17	PJB	ISSUED FOR PART V ASSESSMENT																							
A	27/10/17	PJB	DRAFT FOR REVIEW																												
No.	Date	By	Change	X'd																											
Amendments																															
SHEET 3 OF 8						SHEET 3 OF 8																									



LEGEND

- LANDSCAPING - TURF
- RIPARIAN VEGETATION REHABILITATION AREA
- PAVEMENT REHAB AND REGRADING
- BIORETENTION
- TREE (EXISTING RETAIN)
- TREE (EXISTING REMOVE)
- TREE (NEW)
- BITUMEN (NEW)
- COLOURED CONCRETE PATH
- COBBLE GRANITE (GREY)
- COBBLE GRANITE (BLACK)
- BENCH SEAT

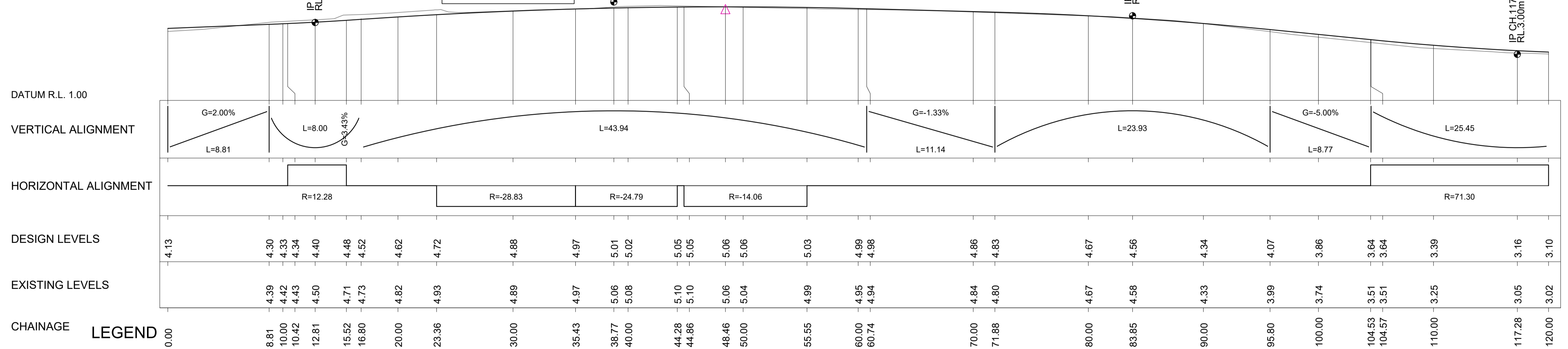
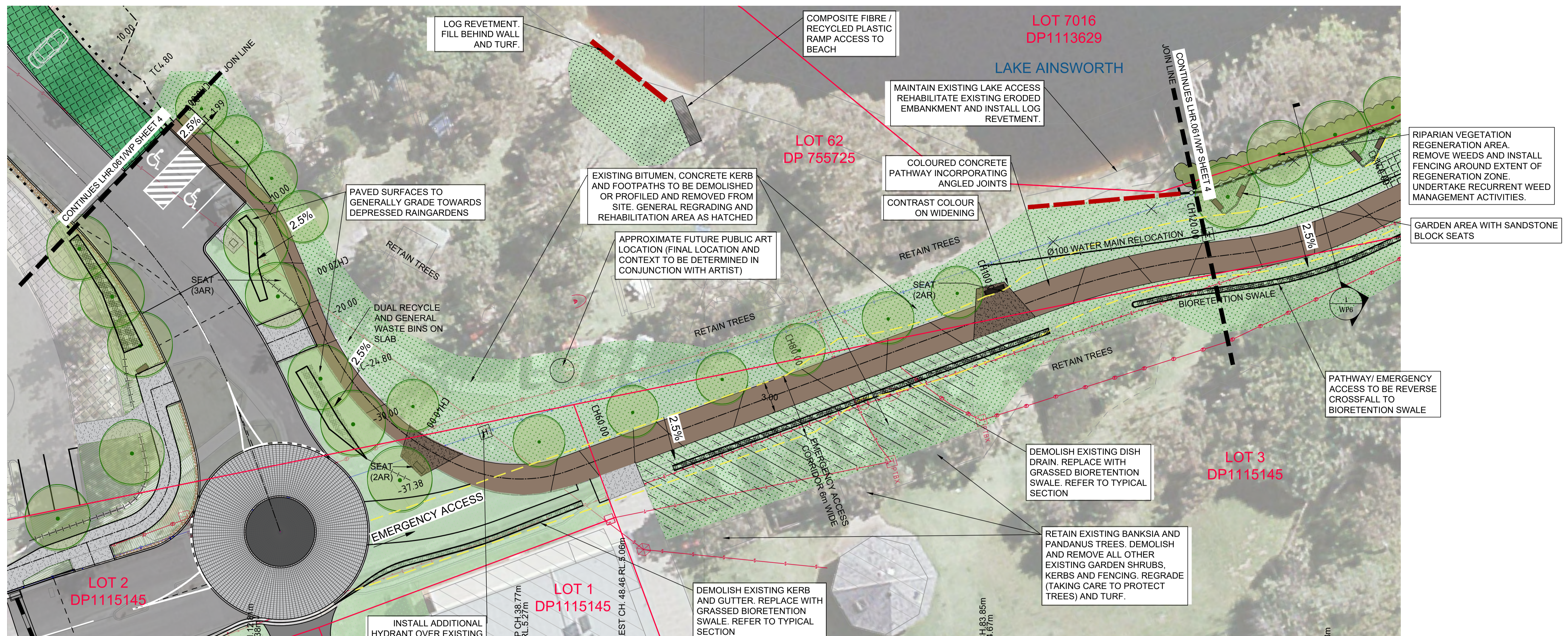
- TELSTRA FIBRE OPTIC CABLE
- TELSTRA CABLE
- UNDER GROUND ELECTRICITY
- OVER HEAD ELECTRICITY
- SEWER (GRAVITY)
- SEWER RISING MAIN (EXISTING)
- STORMWATER PIPE (EX)
- STORMWATER PIPE (NEW)
- FENCE (NEW)
- FENCE (EXISTING)
- EXISTING EDGE OF BITUMEN
- SIGN
- STOP VALVE
- HYDRANT
- TELSTRA PIT
- POWER POLE
- STAY POLE
- STN/GIN
- SSM/PM
- WATER MAIN (NEW)
- WATER MAIN (EXISTING)
- FK 4.95 FINISHED SURFACE RL
- BOUNDARY
- EMERGENCY ACCESS
- FK - FLUSH KERB
- K&G - KERB AND GUTTER
- DISH - DISH DRAIN
- TK - TOP OF KERB
- FS FINISHED SURFACE

B	3/11/17	PJB	ISSUED FOR PART V ASSESSMENT	
A	27/10/17	PJB	DRAFT FOR REVIEW	
No.	Date	By	Change	X'd
Amendments				



SURVEY	BSC	DESIGNED	PJB
DATE	JULY 2017	DRAWN	PJB
F.B.	L.B.	CHECKED	
DATUM	AHD	APPROVED	
DRAWING LHR 30_061 LAKE A FORESHORE DA.dwg			
SHEET 4 OF 8			

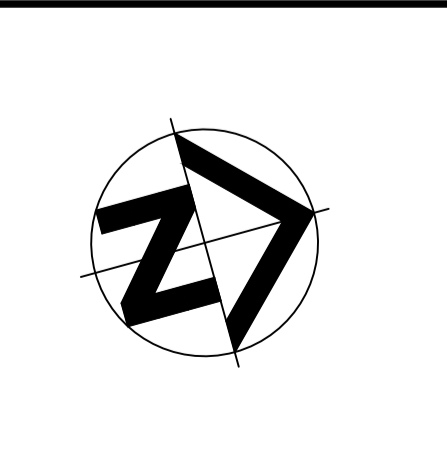
BALLINA SHIRE COUNCIL			
LAKE AINSWORTH FORESHORE WORKS PACIFIC PDE & SOUTHERN RD INTERSECTION GENERAL WORKS PLAN			
Scale	SCALE 1:100	Plan No.	LHR30.061/WP A1



LONGITUDINAL SECTION (PATHWAY/EMERGENCY ACCESS)

LEGEND

- LANDSCAPING - TURF
- PAVEMENT REHAB AND REGRADING
- TREE (EXISTING RETAIN)
- TREE (EXISTING REMOVE)
- TREE (NEW)
- BITUMEN (NEW)
- COLOURED CONCRETE PATH
- COBBLE GRANITE (GREY)
- COBBLE GRANITE (BLACK)
- BENCH SEAT
- LANDSCAPING - RIPARIAN VEGETATION REHABILITATION AREA
- BIORETENTION
- TELSTRA FIBRE OPTIC CABLE
- TELSTRA CABLE
- UNDER GROUND ELECTRICITY
- OVER HEAD ELECTRICITY
- SEWER (GRAVITY)
- SEWER RISING MAIN (EXISTING)
- STORMWATER PIPE (EX)
- STORMWATER PIPE (NEW)
- FENCE (NEW)
- FENCE (EXISTING)
- EXISTING EDGE OF BITUMEN
- SIGN
- STOP VALVE
- HYDRANT
- TELSTRA PIT
- POWER POLE
- STAY POLE
- STN/GIN
- SSM/PM
- WATER MAIN (NEW)
- WATER MAIN (EXISTING)
- FK 4.95 FINISHED SURFACE RL
- BOUNDARY
- EMERGENCY ACCESS
- FK- FLUSH KERB
- K&G - KERB AND GUTTER
- DISH - DISH DRAIN
- TK- TOP OF KERB
- FS FINISHED SURFACE



C	4/6/18	PJB	AMENDED FOR RFS MATTERS	
B	3/11/17	PJB	ISSUED FOR PART V ASSESSMENT	
A	27/10/17	PJB	DRAFT FOR REVIEW	
No.	Date	By	Change	X'd
Amendments				



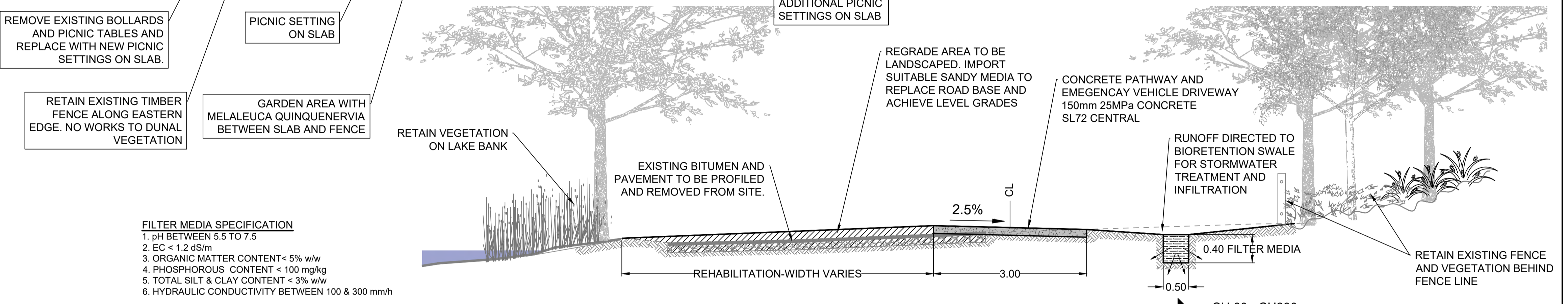
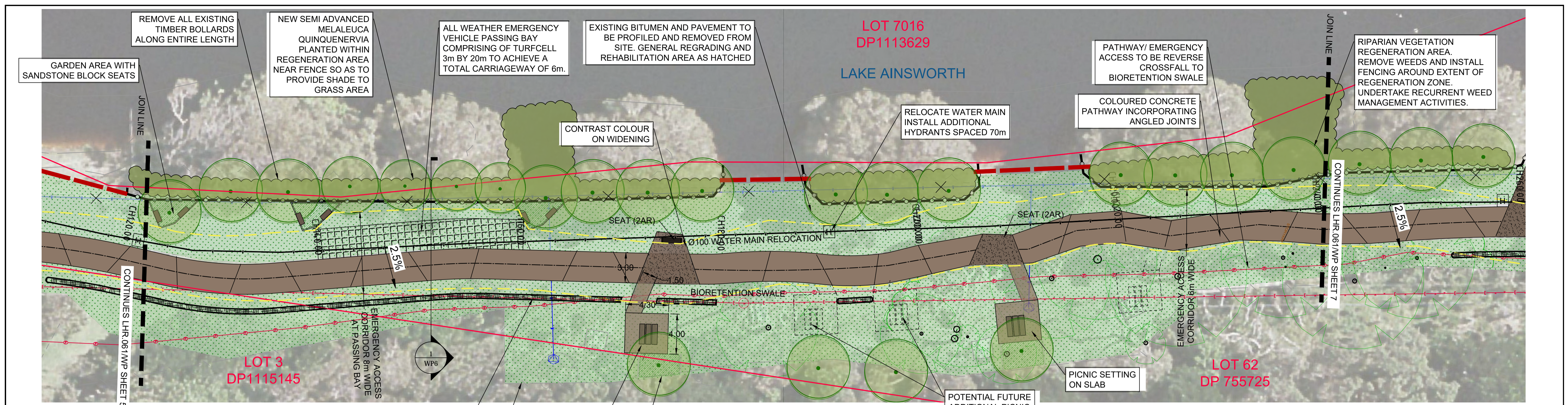
SURVEY	BSC	DESIGNED	PJB
DATE	JULY 2017	DRAWN	PJB
F.B.	L.B.	CHECKED	
DATUM	AHD	APPROVED	
DRAWING	LHR 30_061 LAKE A FORESHORE DA.dwg		
SHEET 5 OF 8			

BALLINA SHIRE COUNCIL

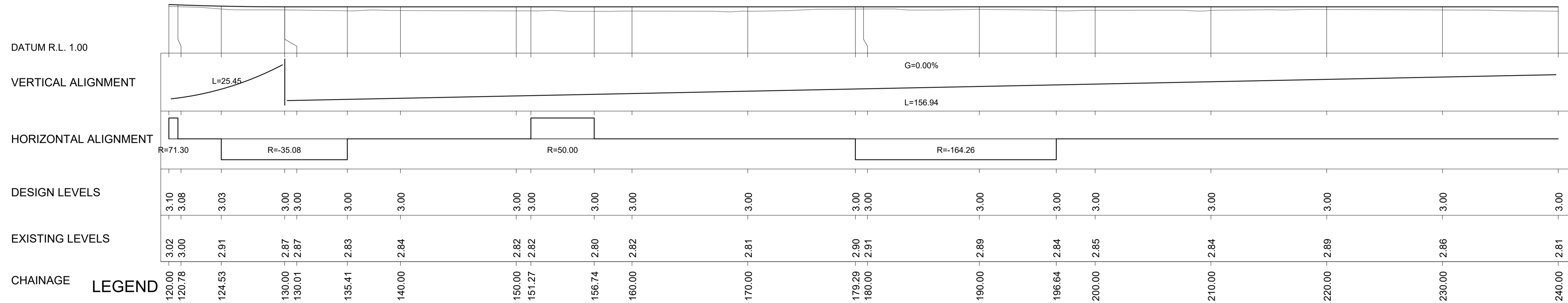
LAKE AINSWORTH FORESHORE WORKS
EASTERN FORESHORE GENERAL WORKS
PLAN AND LONGSECTION (CH0 TO CH120)

Scale: 1:200 [H], 1:100 [V]

Plan No. LHR30.061/WP A1



FILTER MEDIA SPECIFICATION
 1. pH BETWEEN 5.5 TO 7.5
 2. EC < 1.2 dS/m
 3. ORGANIC MATTER CONTENT < 5% w/w
 4. PHOSPHOROUS CONTENT < 100 mg/kg
 5. TOTAL SILT & CLAY CONTENT < 3% w/w
 6. HYDRAULIC CONDUCTIVITY BETWEEN 100 & 300 mm/h



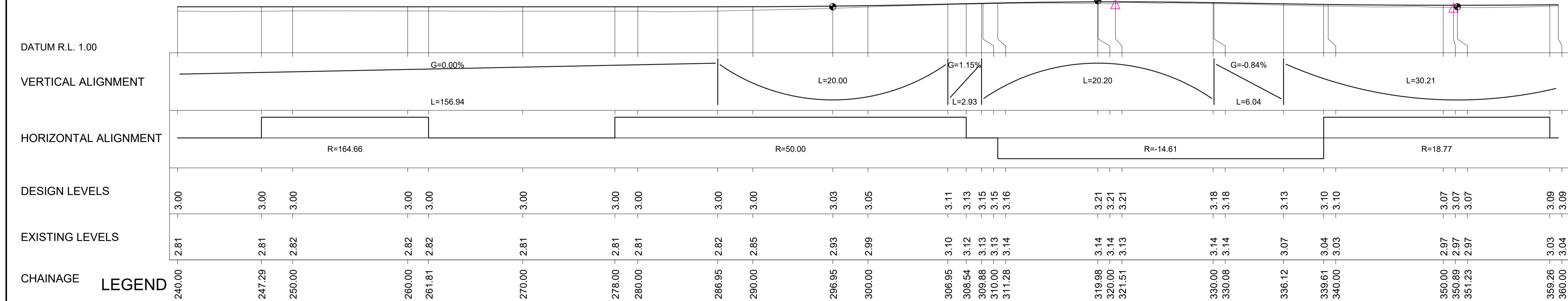
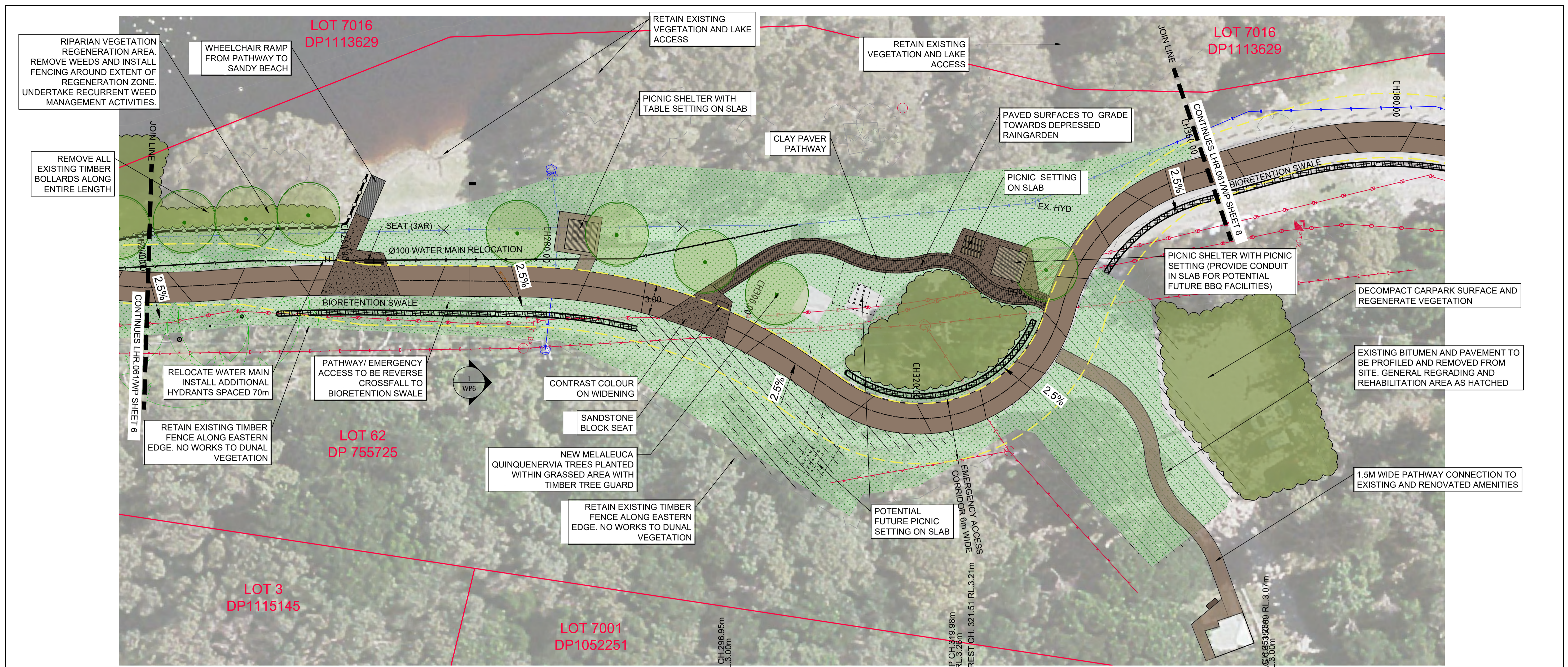
LEGEND

No.	Date	By	Change	X'd
C	4/6/18	PJB	AMENDED FOR RFS MATTERS	
B	3/11/17	PJB	ISSUED FOR PART V ASSESSMENT	
A	27/10/17	PJB	DRAFT FOR REVIEW	



SURVEY	BSC	DESIGNED	PJB
DATE	JULY 2017	DRAWN	PJB
F.B.	L.B.	CHECKED	
DATUM	AHD	APPROVED	
DRAWING	LHR 30_061 LAKE A FORESHORE DA.dwg		
SHEET 6 OF 8			

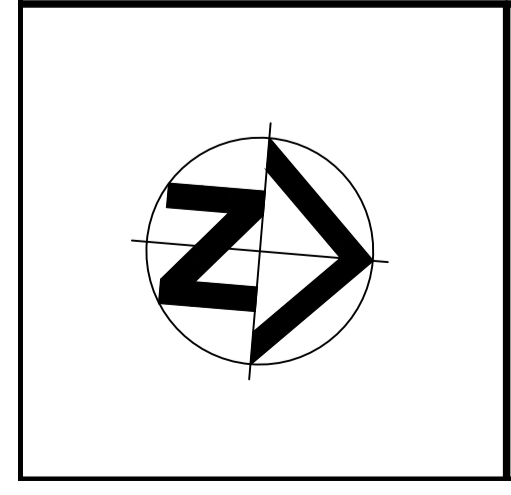
BALLINA SHIRE COUNCIL			
LAKE AINSWORTH FORESHORE WORKS EASTERN FORESHORE GENERAL WORKS PLAN AND LONGSECTION (CH120 TO CH240)			
Scale	1:200 [H] 1:100 [V]	Plan No.	LHR30.061/WP A1



LONGITUDINAL SECTION (PATHWAY/EMERGENCY ACCESS)

LEGEND

LANDSCAPING - TURF	PAVEMENT REHAB AND REGRADING	TREE (EXISTING RETAIN)	BITUMEN (NEW)	COBBLE GRANITE (GREY)
RIPARIAN VEGETATION REHABILITATION AREA	BIORETENTION	TREE (EXISTING REMOVE)	COLOURED CONCRETE PATH	COBBLE GRANITE (BLACK)
		TREE (NEW)	BENCH SEAT	



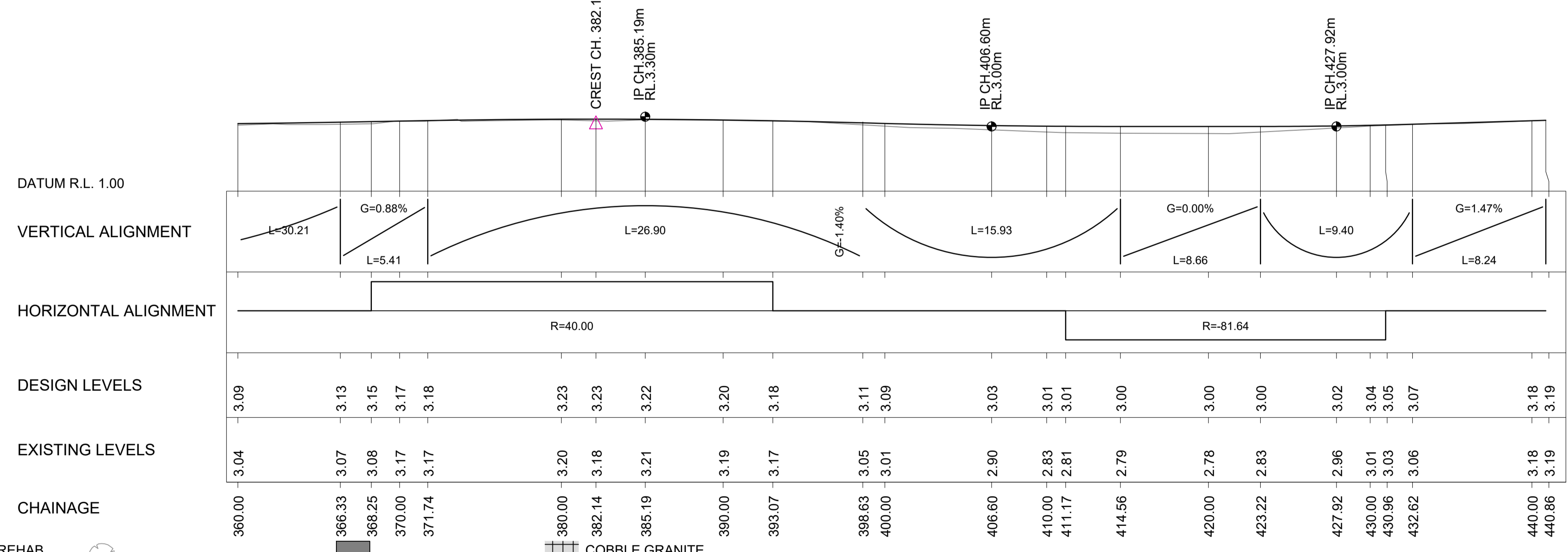
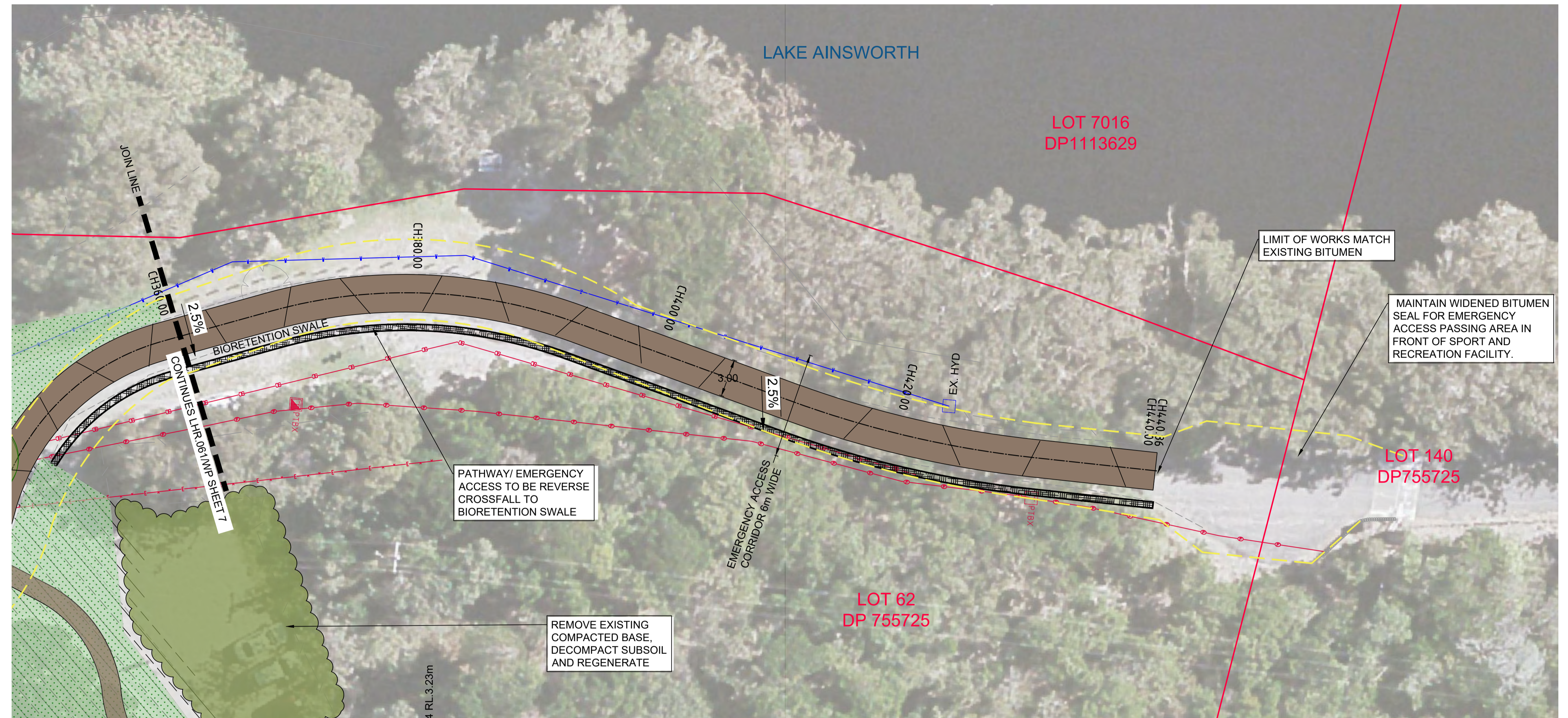
TELSTRA FIBRE OPTIC CABLE	SIGN	WATER MAIN (NEW)
TELSTRA CABLE	STOP VALVE	WATER MAIN (EXISTING)
UNDER GROUND ELECTRICITY	HYDRANT	FK 4.95 FINISHED SURFACE
OVER HEAD ELECTRICITY	TELSTRA PIT	BOUNDARY
SEWER (GRAVITY)	POWER POLE	EMERGENCY ACCESS
SEWER RISING MAIN (EXISTING)	STAY POLE	FK - FLUSH KERB
STORMWATER PIPE (EX)	STN/GIN	K&G - KERB AND GUTTER
STORMWATER PIPE (NEW)	SSM/PM	DISH - DISH DRAIN
FENCE (NEW)		TK - TOP OF KERB
FENCE (EXISTING)		FS FINISHED SURFACE
EXISTING EDGE OF BITUMEN		

No.	Date	By	Change	X'd
C	4/6/18	PJB	AMENDED FOR RFS MATTERS	
B	3/11/17	PJB	ISSUED FOR PART V ASSESSMENT	
A	27/10/17	PJB	DRAFT FOR REVIEW	
Amendments				



SURVEY	BSC	DESIGNED	PJB
DATE	JULY 2017	DRAWN	PJB
F.B.	L.B.	CHECKED	
DATUM	AHD	APPROVED	
DRAWING LHR 30_061 LAKE A FORESHORE DA.dwg			
SHEET 7 OF 8			

BALLINA SHIRE COUNCIL			
LAKE AINSWORTH FORESHORE WORKS			
STAGE 1 - EASTERN FORESHORE			
PLAN AND LONGSECTION (CH240 TO CH360)			
Scale	1:200 [H]	Plan No.	LHR30.061/WP
	1:100 [V]		A1



LONGITUDINAL SECTION (PATHWAY/EMERGENCY ACCESS)

LEGEND

- LANDSCAPING - TURF
- PAVEMENT REHAB AND REGRADING
- TREE (EXISTING RETAIN)
- BITUMEN (NEW)
- RIPARIAN VEGETATION REHABILITATION AREA
- BIORETENTION
- TREE (EXISTING REMOVE)
- COLOURED CONCRETE PATH
- TREE (NEW)
- COBBLE GRANITE (GREY)
- COBBLE GRANITE (BLACK)
- BENCH SEAT

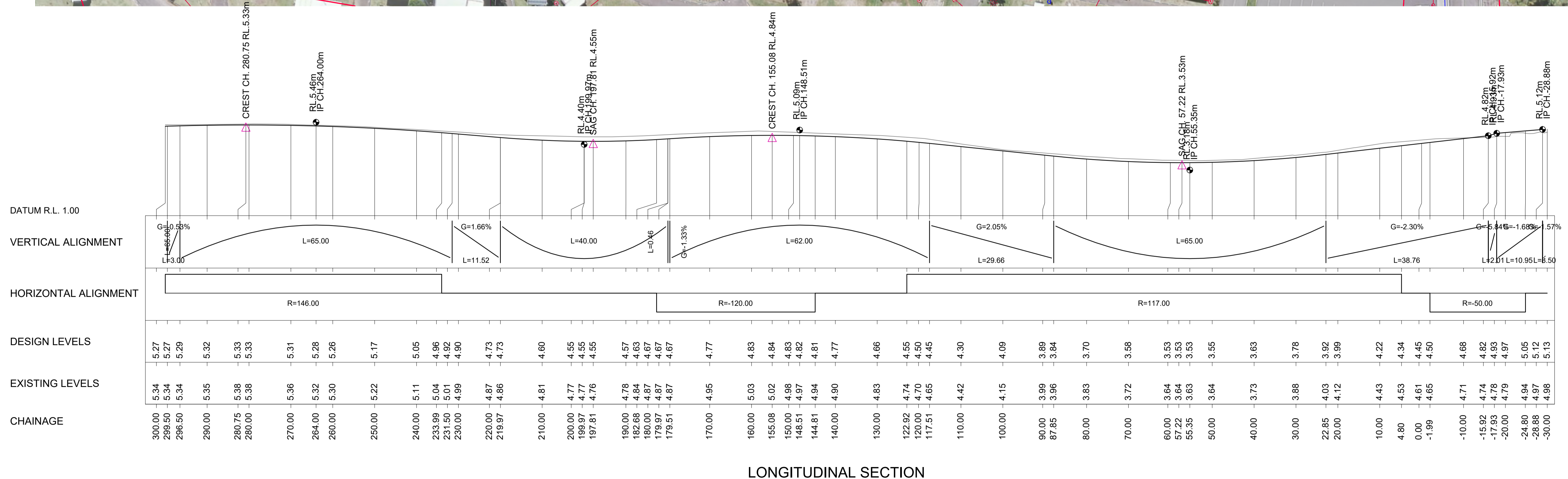
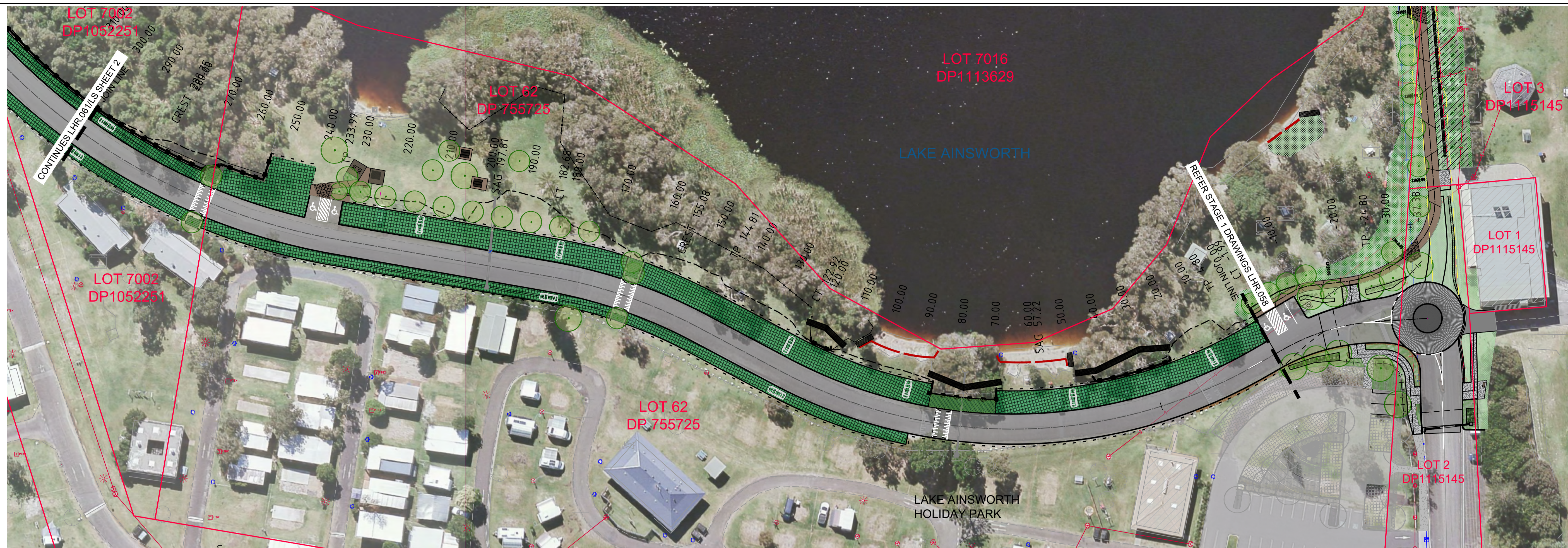
- TELSTRA FIBRE OPTIC CABLE
- TELSTRA CABLE
- UNDER GROUND ELECTRICITY
- OVER HEAD ELECTRICITY
- SEWER (GRAVITY)
- SEWER RISING MAIN (EXISTING)
- STORMWATER PIPE (EX)
- STORMWATER PIPE (NEW)
- FENCE (NEW)
- FENCE (EXISTING)
- EXISTING EDGE OF BITUMEN
- SIGN
- STOP VALVE
- HYDRANT
- TELSTRA PIT
- POWER POLE
- STAY POLE
- STN/GIN
- SSM/PM
- WATER MAIN (NEW)
- WATER MAIN (EXISTING)
- FK 4.95 FINISHED SURFACE RL
- BOUNDARY
- EMERGENCY ACCESS
- FK - FLUSH KERB
- K&G - KERB AND GUTTER
- DISH - DISH DRAIN
- TK - TOP OF KERB
- FS FINISHED SURFACE

No.	Date	By	Change	X'd
C	4/6/18	PJB	AMENDED FOR RFS MATTERS	
B	3/11/17	PJB	ISSUED FOR PART V ASSESSMENT	
A	27/10/17	PJB	DRAFT FOR REVIEW	
Amendments				

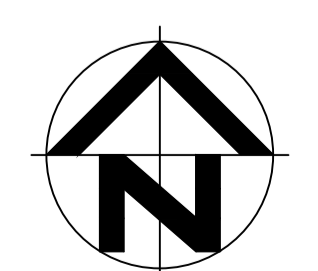


SURVEY	BSC	DESIGNED	PJB
DATE	JULY 2017	DRAWN	PJB
F.B.	L.B.	CHECKED	
DATUM	AHD	APPROVED	
DRAWING LHR 30_061 LAKE A FORESHORE DA.dwg			
SHEET 8 OF 8			

BALLINA SHIRE COUNCIL			
LAKE AINSWORTH FORESHORE WORKS EASTERN FORESHORE GENERAL WORKS PLAN AND LONGSECTION (CH360 TO CH440)			
Scale	1:200 [H] 1:100 [V]	Plan No. LHR30.061/WP	A1



LONGITUDINAL SECTION



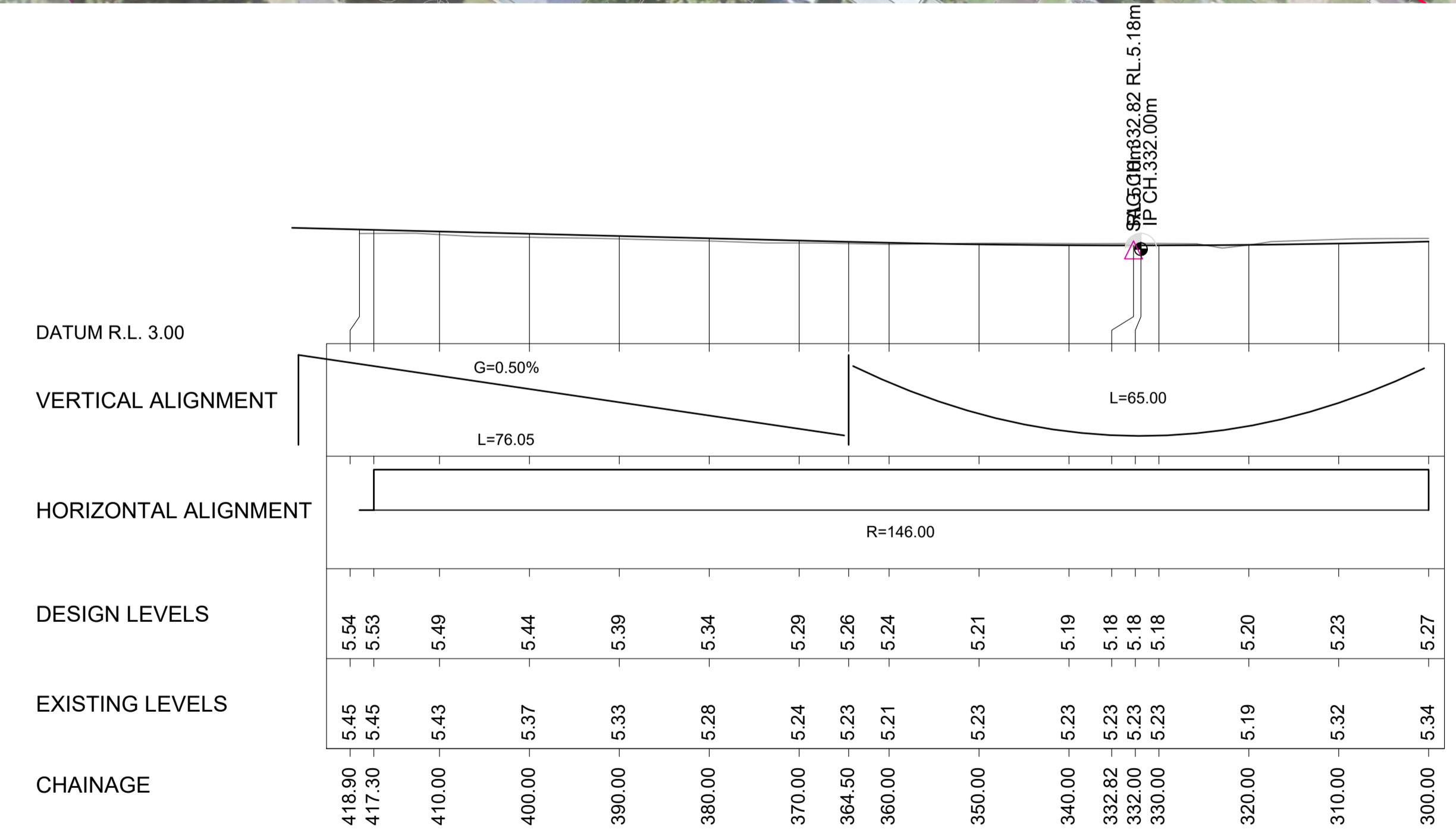
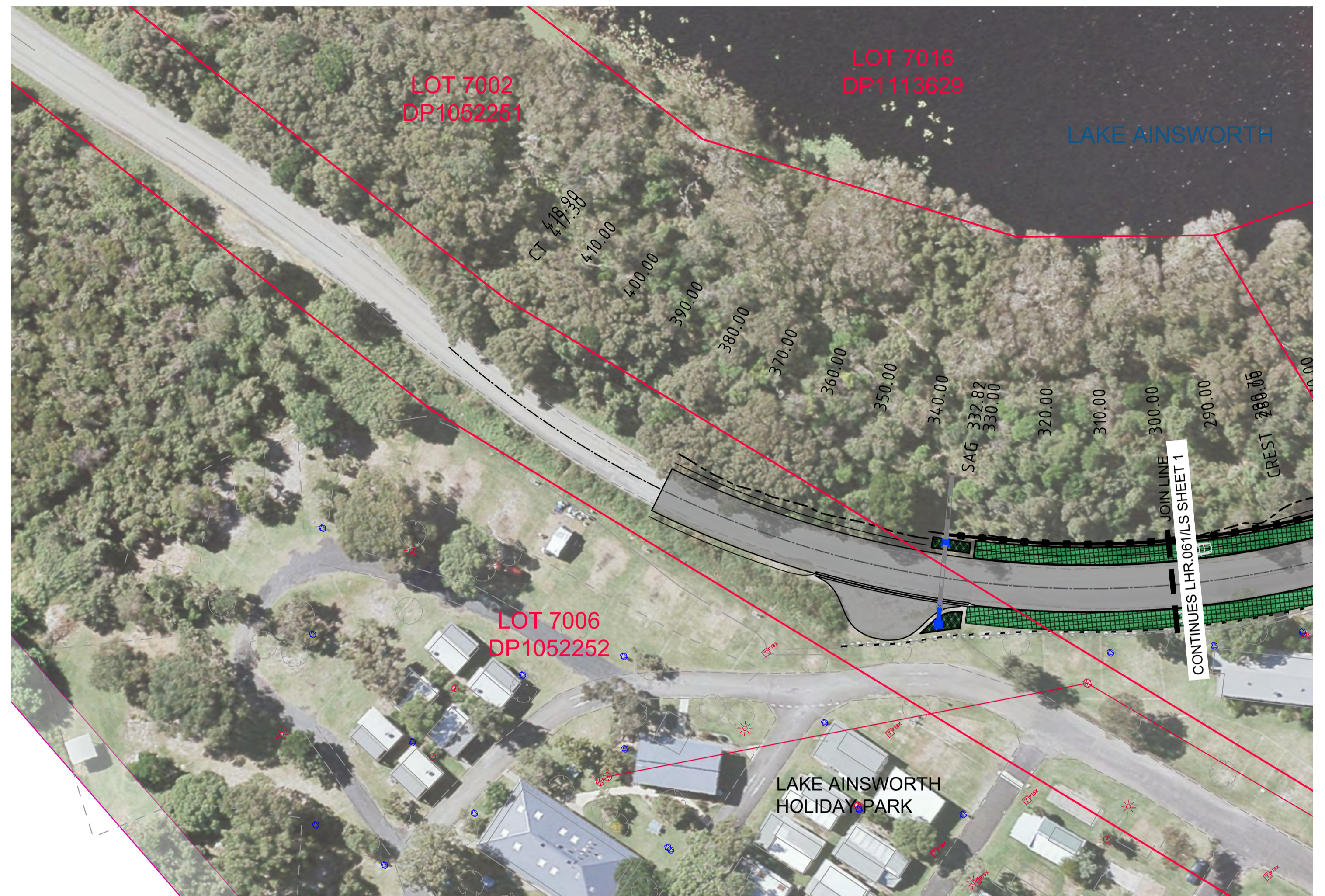
LEGEND	
	TELSTRA FIBRE OPTIC CABLE
	TELSTRA CABLE
	UNDER GROUND ELECTRICITY
	OVER HEAD ELECTRICITY
	SEWER (GRAVITY)
	SEWER RISING MAIN (EXISTING)
	STORMWATER PIPE (EX)
	WATER (EX)
	FENCE (EX)
	EDGE OF BITUMEN (EX)
	SIGN
	STOP VALVE
	HYDRANT
	TELSTRA PIT
	POWER POLE
	STAY POLE
	STN/GIN
	SSM/PM
	STORMWATER PIPE (NEW)
	LANDSCAPE FENCE (NEW)
	BOLLARD LINE (NEW)
	BOLLARD LINE (EXISTING)
	BOUNDARY
	FK 4.95 FINISHED SURFACE RL
	BIORETENTION
	TURFCELL CAR PARKING
	LANDSCAPING
	AC SEAL

No.	Date	By	Change	X'd
B	3/11/17	PJB	ISSUED FOR PART V ASSESSMENT	
A	27/10/17	PJB	DRAFT FOR REVIEW	
Amendments				

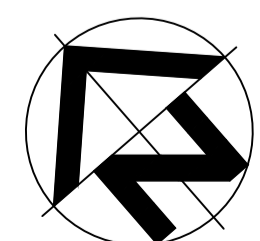


SURVEY	BSC	DESIGNED	PJB
DATE	JULY 2017	DRAWN	PJB
F.B.	L.B.	CHECKED	
DATUM	AHD	APPROVED	
DRAWING LHR 30_061 LAKE A FORESHORE DA.dwg			
SHEET 1 OF 2			

BALLINA SHIRE COUNCIL			
LAKE AINSWORTH FORESHORE WORKS			
SOUTHERN ROAD ALIGNMENT			
PLAN AND LONGSECTION (CH0 - 300)			
Scale	1:500 [H]	Plan No.	LHR30.061/LS
	1:100 [V]		A1



LONGITUDINAL SECTION



LEGEND

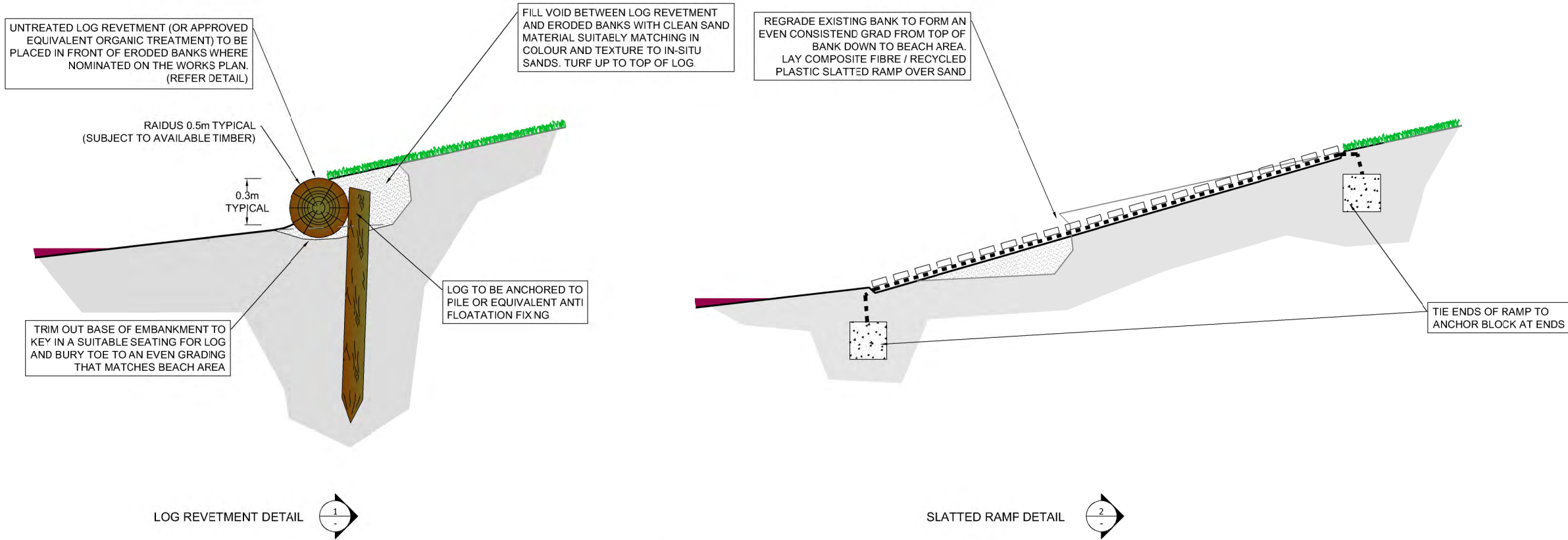
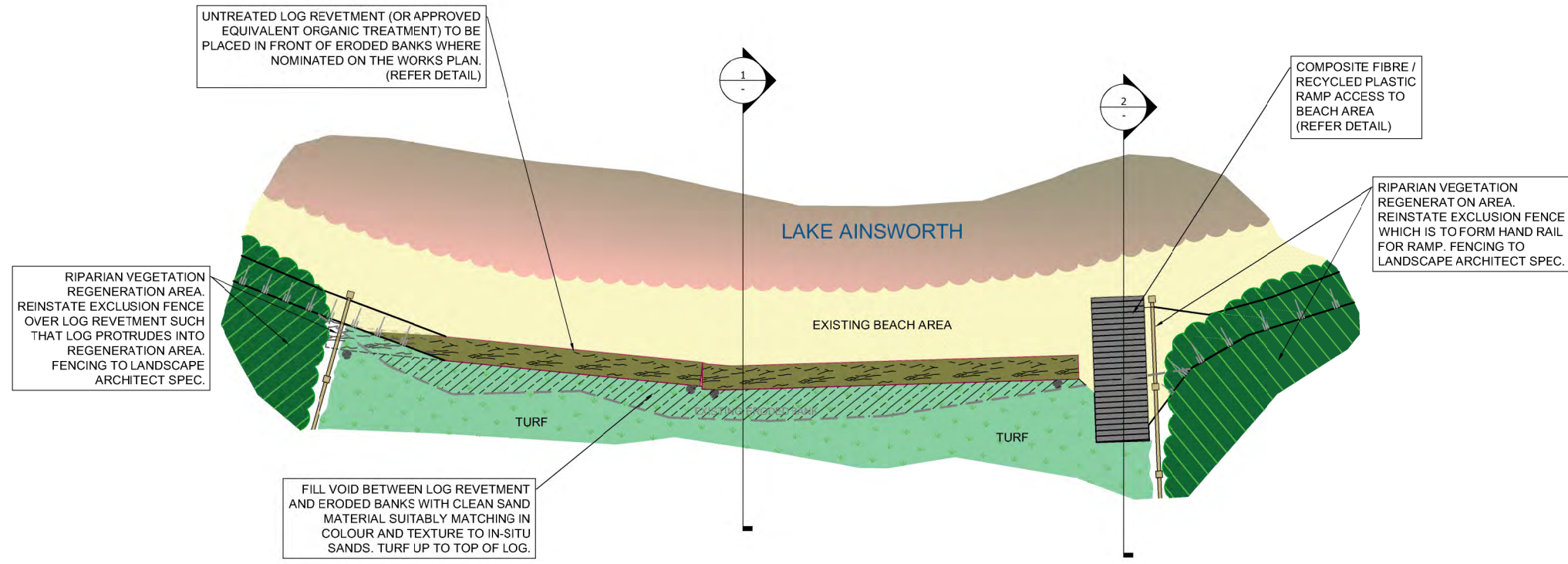
	TELSTRA FIBRE OPTIC CABLE		SIGN		STORMWATER PIPE (NEW)
	TELSTRA CABLE		STOP VALVE		LANDSCAPE FENCE (NEW)
	UNDER GROUND ELECTRICITY		HYDRANT		BOLLARD LINE (NEW)
	OVER HEAD ELECTRICITY		TELSTRA PIT		BOLLARD LINE (EXISTING)
	SEWER (GRAVITY)		POWER POLE		BOUNDARY
	SEWER RISING MAIN (EXISTING)		STAY POLE		FK 4.95 FINISHED SURFACE RL
	STORMWATER PIPE (EX)		STN/GIN		BIORETENTION
	WATER (EX)		SSM/PM		TURFCELL
	FENCE (EX)				CAR PARKING
	EDGE OF BITUMEN (EX)				AC SEAL

No.	Date	By	Change	X'd
B	3/11/17	PJB	ISSUED FOR PART V ASSESSMENT	
A	27/10/17	PJB	DRAFT FOR REVIEW	
			Amendments	



SURVEY	BSC	DESIGNED	PJB
DATE	JULY 2017	DRAWN	PJB
F.B.	L.B.	CHECKED	
DATUM	AHD	APPROVED	
DRAWING	LHR 30_061 LAKE A FORESHORE DA.dwg		
SHEET 2 OF 2			

BALLINA SHIRE COUNCIL			
LAKE AINSWORTH FORESHORE WORKS			
SOUTHERN ROAD ALIGNMENT			
PLAN AND LONGSECTION (CH300 - 380)			
Scale	1:500 [H]	Plan No.	LHR30.061/LS
	1:100 [V]		A1



No.	Date	By	Change	X'd
B	3/11/17	PJB	ISSUED FOR PART V ASSESSMENT	
A	27/10/17	PJB	DRAFT FOR REVIEW	
Amendments				



SURVEY	BSC	DESIGNED	PJB
DATE	JULY 2017	DRAWN	PJB
F.B.	L.B.	CHECKED	
DATUM	AHD	APPROVED	
DRAWING LHR 30_061 LAKE A FORESHORE DA.dwg			
SHEET 1 OF 1			

BALLINA SHIRE COUNCIL		
LAKE AINSWORTH FORESHORE WORKS LOG REVETMENT AND BEACH ACCESS RAMP TYPICAL DETAILS		
Scale	NOT TO SCALE	Plan No. LHR30.061/DT
		A1