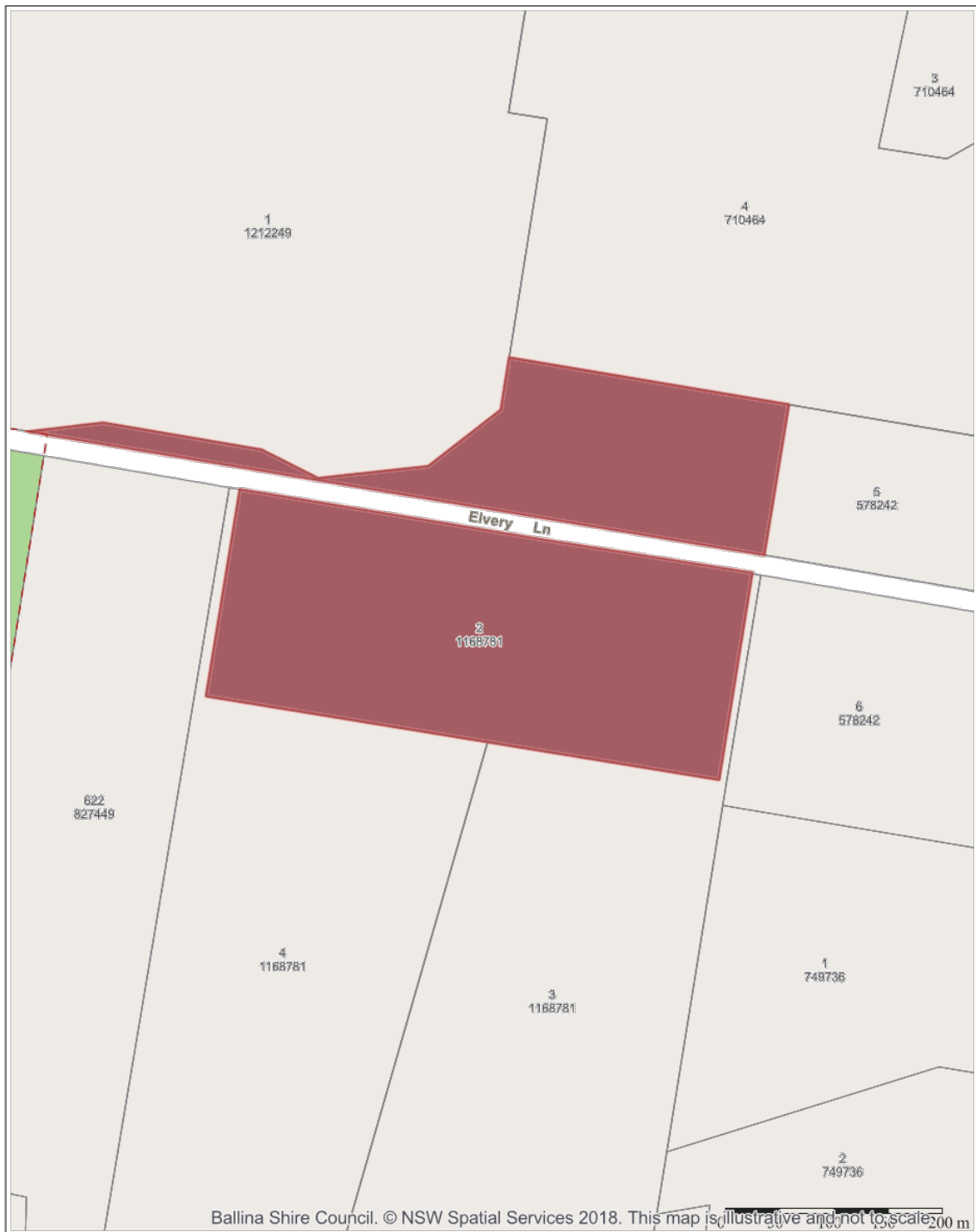


8.1 **DA 2017/554 - Wollongbar Skate Park.DOC**



**Ballina Shire Council**  
40 Cherry Street  
BALLINA NSW 2478

PO Box 450  
BALLINA NSW 2478

1300 864 444  
council@ballina.nsw.gov.au  
www.ballina.nsw.gov.au



**DA 2017/554 - Construction of Skate Park Facility  
- Lot 2 DP 1168781 Elvery Lane, Alstonville**



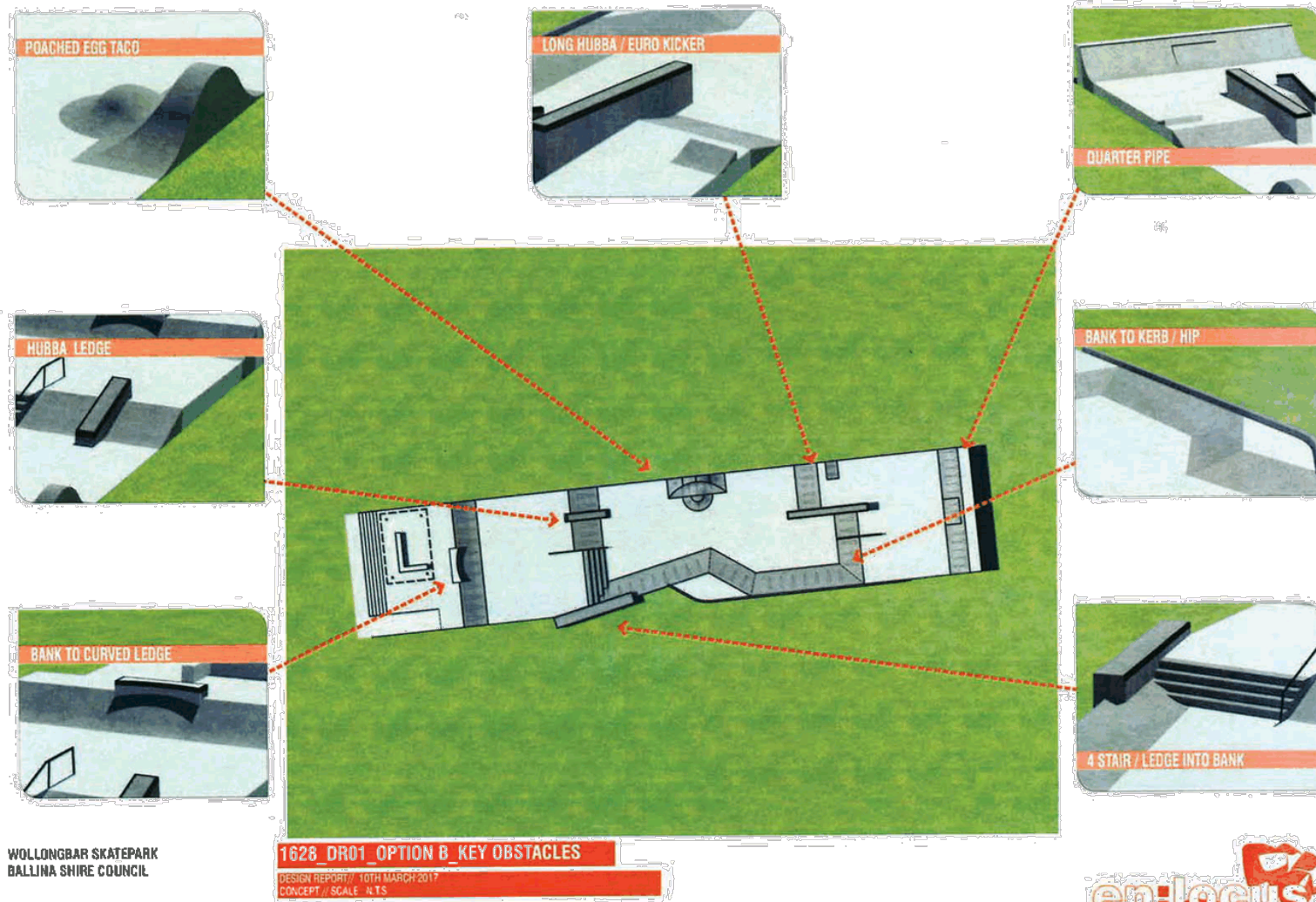
Projection: GDA94 / MGA zone 56  
Date: 9/08/2018

© Ballina Shire Council © NSW Spatial Services 2018  
While every care is taken to ensure the accuracy of this product, Ballina Shire Council and the Local / State / Federal Government departments and Non-Government organisations whom supply datasets, make no representations or warranties about its accuracy, reliability, completeness or suitability for any particular purpose and disclaims all responsibility and all liability (including without limitation, liability in negligence) for all expenses, losses, damages, including indirect or consequential damages and costs which you might incur as a result of the product being inaccurate or incomplete in anyway and for any reason.

CM9-17/82923



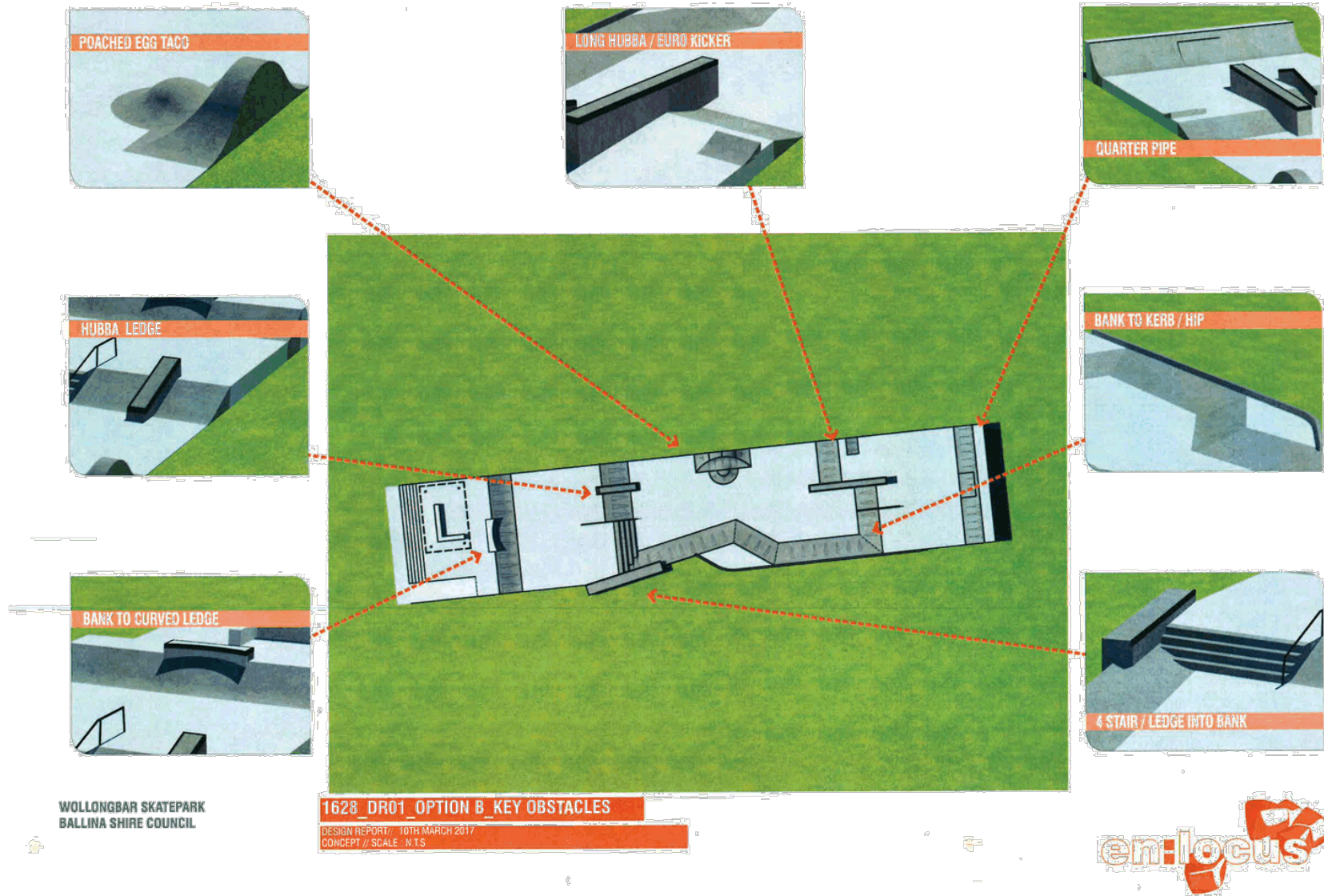




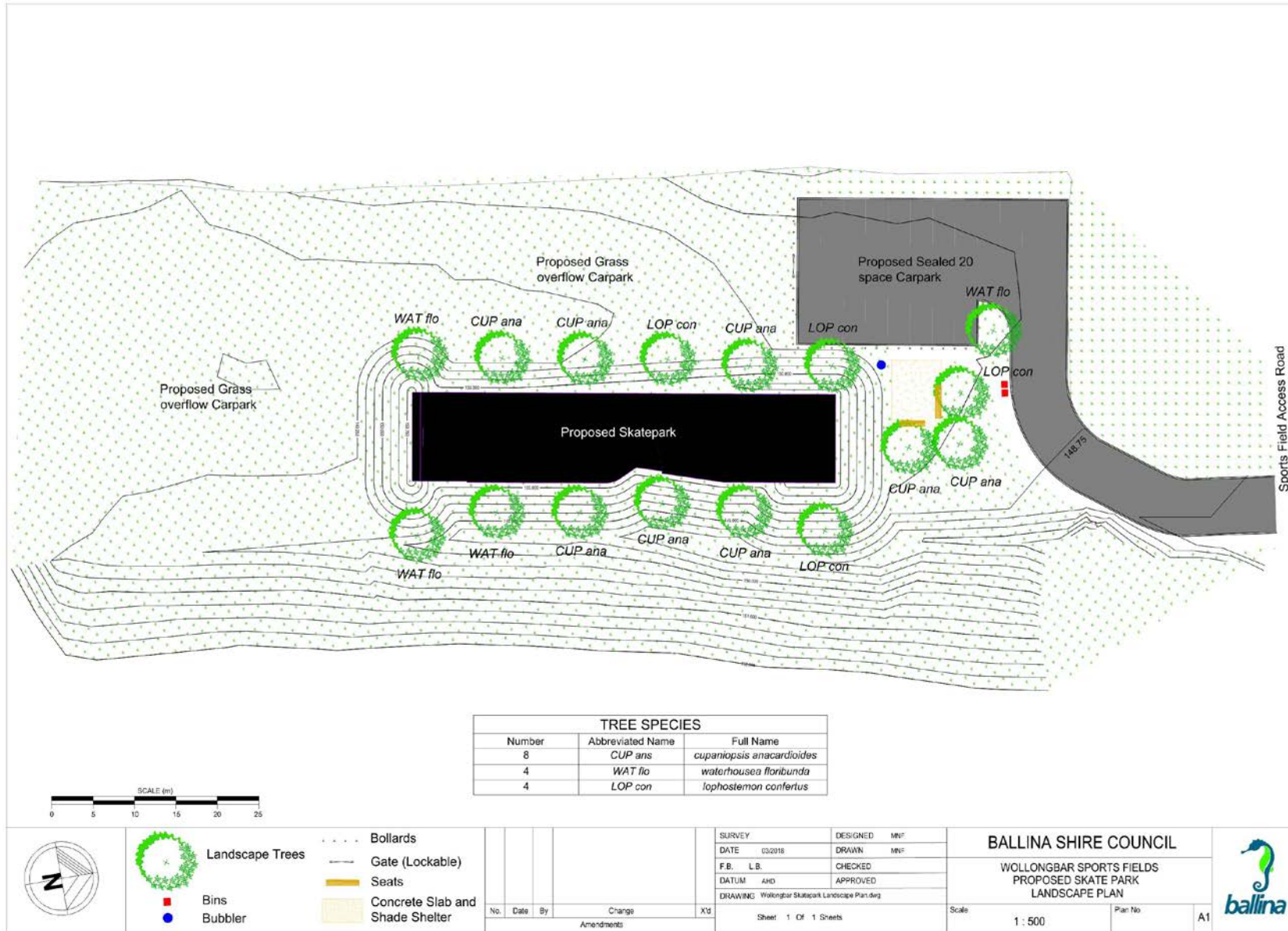
WOLLONGBAR SKATEPARK  
BALLINA SHIRE COUNCIL

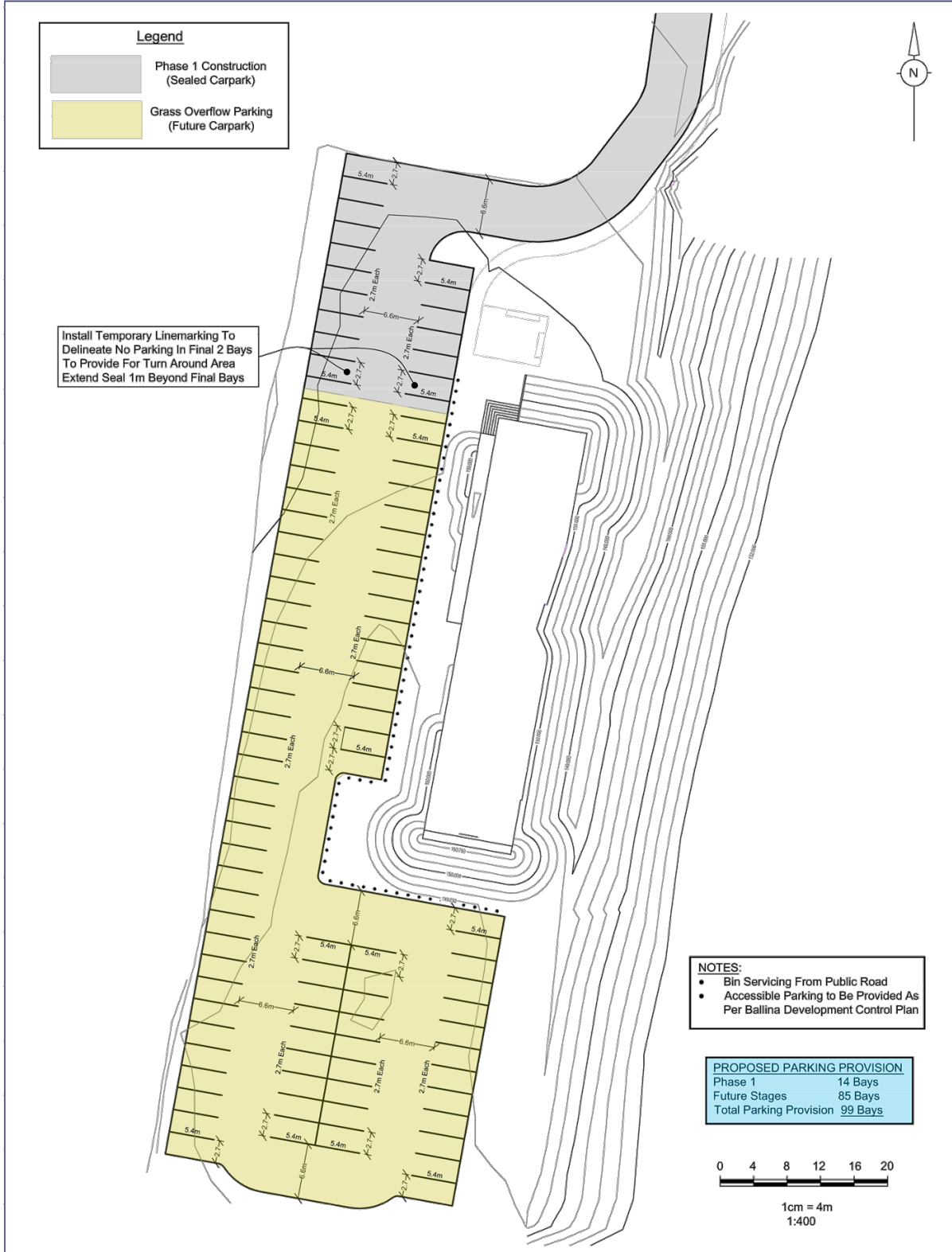


CM9-17/82917







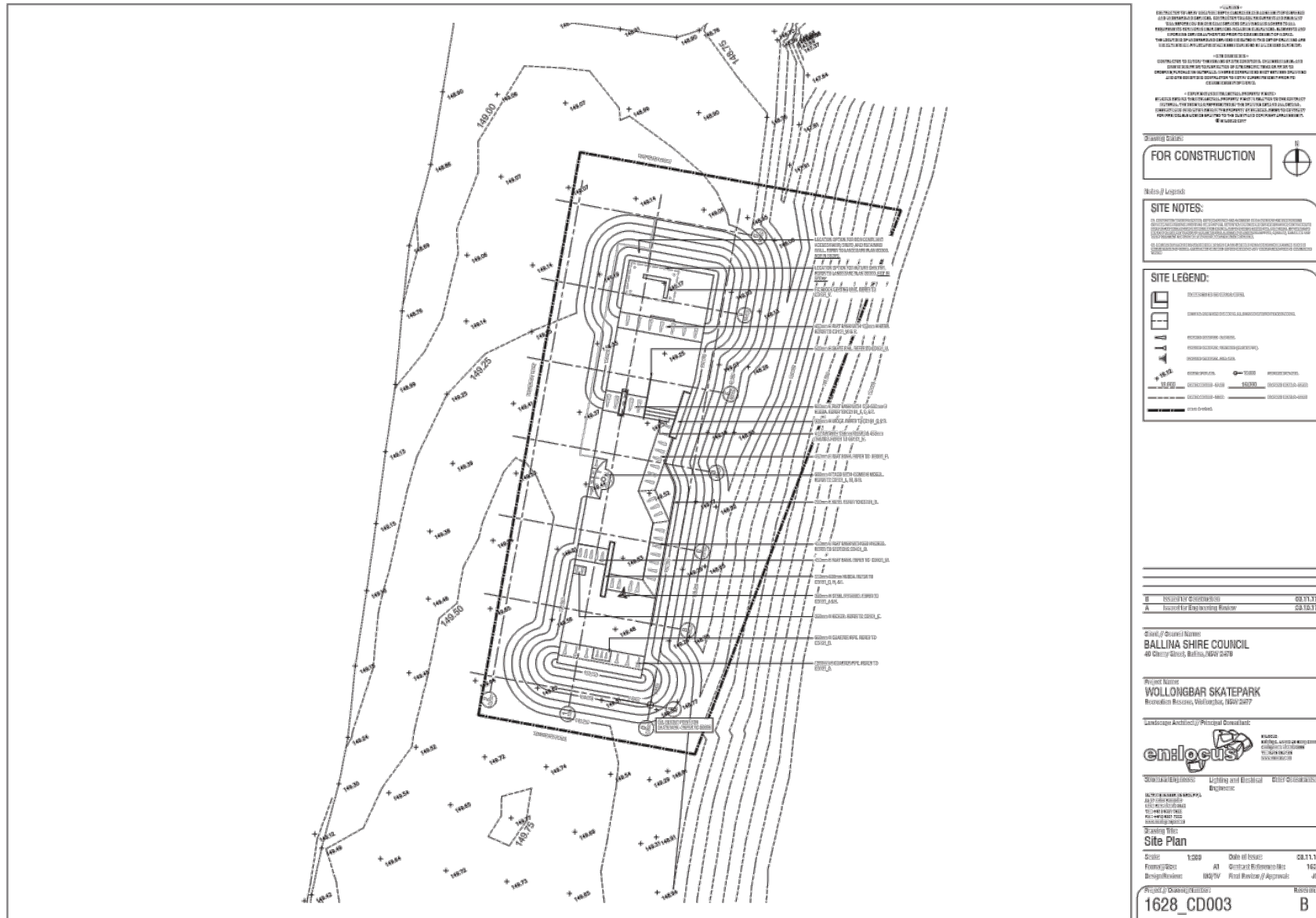


REV	DATE	AMENDMENT
A	03.03.18	First Issue
B		
C		
D		

SOURCE PLAN: [www.maps.six.nsw.gov.au](http://www.maps.six.nsw.gov.au) - accessed

**Newton Denny Chapelle**  
 Surveyors Planners Engineers  
 Email: [offices@newtondennychapelle.com.au](mailto:offices@newtondennychapelle.com.au)  
 LICENCE: 21 Carrington St. Lismore 9430 Ph: 0652 10111  
 CASNO 100 Barker St. Casino 8470 Ph: 8682 5000  
 ABN: 66 220 045 469

**DA-CI-01 - PROPOSED SKATE PARK CAR PARKING LAYOUT**  
 CLIENT: BALLINA COUNCIL (DA 2017/554)  
 LOCATION: LOT 2 DP 1168781  
 RIFLE RANGE ROAD  
 ALSTONVILLE  
 DATE: 03/03/2018 REF: 17/1824 Rev A  
 SCALE: 1:400/1:8 DRAWN: ps







Ballina Shire Council  
40 Cherry Street  
BALLINA NSW 2478

PO Box 450  
BALLINA NSW 2478

1300 864 444  
council@ballina.nsw.gov.au  
www.ballina.nsw.gov.au



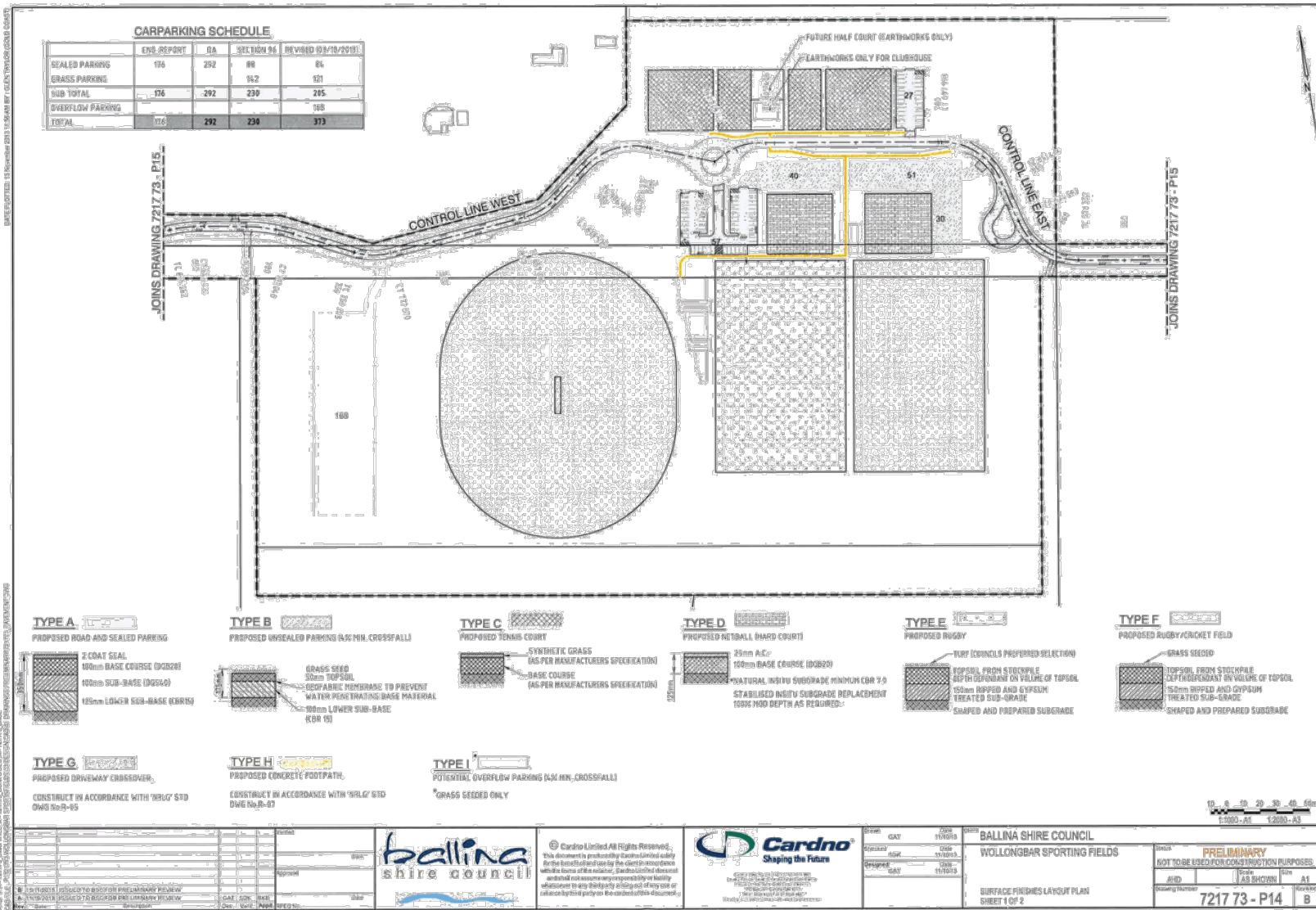
**Aerial View - Elvery Lane Alstonville**  
**DA 2017/554 Lot 2 DP 1168781**

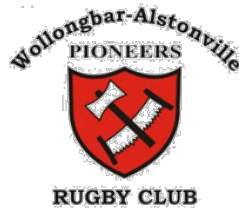
**ballina** shire council  
geographical information system

Projection: GDA94 / MGA zone 56  
Date: 8/08/2018

© Ballina Shire Council © NSW Spatial Services 2018  
While every care is taken to ensure the accuracy of this product, Ballina Shire Council and the Local / State / Federal Government departments and their Government representatives whose supply datasets, make no representations or warranties about its accuracy, reliability, completeness or suitability for any particular purpose and disclaims all responsibility and all liability (including without limitation, liability in negligence) for all expenses, losses, damages (including indirect or consequential damage) and costs which you might incur as a result of the product being inaccurate or incomplete in any way and for any reason.







Lyle Park,  
Cerreto Circuit  
Wollongbar, NSW 2477

P O Box 188  
Alstonville NSW 2477

20 May 2018

The Mayor  
Ballina Shire Council  
P O Box 45  
Ballina NSW 2480

Dear David, Councilors and General Manager,

Re DA 2017 554 - Response to RFI - Elvery Lane ALSTONVILLE.

As I am sure you are all aware Wollongbar Alstonville Rugby Club Inc (WAR) has been working for many years now on providing a facility on the plateau that can cater for the growing youth population of the district by promoting Rugby Union and as you would be aware almost 10 years ago we exceeded the capacity of Lyle Park.

With the generous support of successive Councils we have seen the establishment of a "New Sports Field complex" at Elvery Lane catering for multiple sports, this facility recently opened now provides WAR with the opportunity to build a Club House that will become the New Home of Rugby on the Plateau together with a meeting place for all the other sports at the facility.

As a result of our fund raising we have seen a commitment from New South Wales Rugby to center the administration and development officer for Northern NSW at our proposed facility which will ultimately establish this Sporting ground as a Regional Sporting Hub, attracting inter Regional events.

As you would also understand we are a group of volunteers thus when undertaking a task of this magnitude we work slowly and methodically through process that are not part of our daily lives plus administer the weekly competition of our youth and children. We have made several attempts to talk to Council Staff on this issue and are on their list to give us a call, but feel we need to communicate our concern urgently.

Understanding that there was an issue with the Establishment of the Wollongbar Skate Park at the Rifle Range Road Drive-in site, and the proposition to move it to the Elvery Lane site, we were aware of, however the full ramifications to this were not understood.



**We wish to raise a very Strong Objection to the Location of this long sought after facility at the Elvery Lane location.**

As a Club who interact with children as young as 6 years old through to youth in their twenties (some in the forties), many who commenced their journey through our sport at WAR, many of the fathers of the 6-10 year old were players at the club, allows we feel us to easily comment on many of the issues involved with a Skate park.

We have a saying on the Plateau "It takes a village to raise a child in Wollongbar/Alstonville" unlike other areas we are an open community someone knows what our children are doing most of the time.

WAR like our sister sporting Clubs, Football, Cricket, Netball, Tennis interact with the local children on a regular basis and the children are made to understand what our community values are, and someone is always watching.

Our children know that others are watching and commenting to their families on their behavior both good and bad, we encourage the youth to be active and participate within societies boundaries and bad things tend to happen when monitoring is low or non-existent. By placing the Skate Park in an isolated location we are bound to create an environment that breeds anti-social activities.

This will place the facilities we are attempting to establish and those that live in the vicinity at a great risk.

**However this objection's grounds are predominately with regards to the loss of parking facilities as a result of the proposed location of the skate park.**

WAR are currently looking at a facility that will if successful with funding grants be valued in excess of 1.5 Million dollars plus internal fit out of \$275K , our normal Saturday games have in excess of 150 vehicles attend, big games WAR verses Ballina can attract in excess of 300, over the last 10 years WAR have won the right to host a number of Major & Minor semi-final's where vehicles are required to park as far away as the Tavern, with a bus used to ferry spectators to the ground, our neighbour's in Cerreto circuit have been wonderfully understanding , to date.

Our proposed use of the New Sporting Field at Elvery Lane was on the understanding the 300 plus parking for cars, five coaches plus an overflow parking on an unmarked ground. This has been substantially reduced due to "Budget restraints" and will now further be reduced due to the construction of a Skate park.

WAR, is uncomfortable with the prospect of informing the many contributors to our project that it may not be capable of achieving the goals set out within the agreements established to obtain funding due to lack of Parking facilities at the grounds, particularly the State Governments Sporting Hub and the NSWRU Regional Development Office for the North Coast.

We respectfully request you reconsider the Location of the Wollongbar Skate Park at the Elvery Lane site on the grounds of Security and the further loss of parking to the Sporting Fields.

Yours Sincerely,

*PHilliard*

Phil Hilliard  
For and on behalf of  
Wollongbar Alstonville Rugby Inc.  
Treasurer.