



**SCOPE**

Ballina Shire Council has engaged design team ink to prepare a concept plan for the future embellishment of land at the corner of Plateau Drive and Rifle Range Road, Wollongbar, as a district level parkland. A district level parkland supports not only the local residents but also visitors from other nearby villages and towns.

In the past there have been numerous community engagement activities undertaken and a number of plan options prepared for this site. The concept design developed herein seeks to best address the varied consultation outcomes with Council's recreation planning objectives for the site.



Above: Extracts from the engagement undertaken as part of the Wollongbar 2038 Visioning

**SITE**



Above: Photo of the site taken during remediation works - looking towards the roundabout.

**KEY FEATURES OF THE SITE AND CONTEXT**

The proposed Wollongbar District Parkland is located at the corner of Rifle Range Road and Plateau Drive near the interface of the original and newer areas of Wollongbar. The site is central to an existing, as well as planned future residential population.

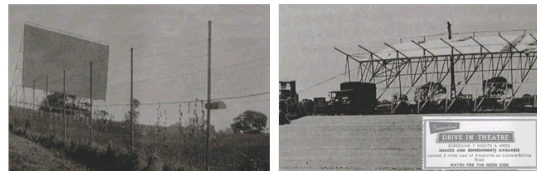
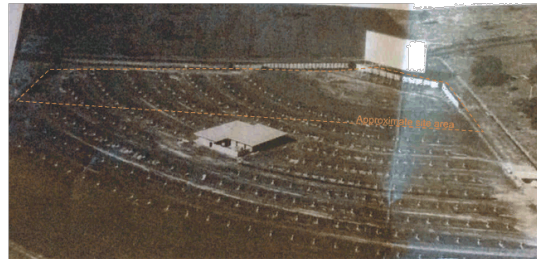
The land is part of the Bundjalung Nation and, according to Keats N.C. (1988) is within the Nyangbal and Wiyabal tribal language areas.

An existing park containing play equipment is located 100m to the south-east at Killarney Crescent. This park provides for children ages 4-10 years. The site is also located approximately 500m - 1km from the new sports fields which provide multipurpose ovals and multi-courts for public use and teams sports - primarily ball games.

The site in its present form is unconstrained by existing vegetation and the landform is relatively flat with a small portion at the western extent falling away to Plateau Drive to the west.

Wollongbar, and the broader plateau area, contains prime agricultural land and once supported The Big Scrub. This vegetation type is highly valued by the community.

Historically, the site was the former Summerland Drive-in Theatre which was a significant social and arts resource up until it ceased operation in the 1980's. The arched patterns of the vehicle access isles remain in the topography of the landscape today and can be seen in aerial photography.



Above: Summerland Drive-in Theatre (Source: download from facebook "Ballina Blast from the Past" contribution by Brian Rose)

**WOLLONGBAR DISTRICT PARKLAND: FUN AND FITNESS FOR ALL**  
CHALLENGING \_ LEARNING \_ CONNECTING : EMPOWERING BODIES \_ MAKING MEMORIES

**THE VISION**

The vision, is to provide a parkland to service the broader district which offers fun and fitness opportunities for all.

**KEY PRINCIPLES**

**Welcoming and Inclusive**

- A welcoming setting where people feel included, comfortable, safe and want to stay.
- Adaptive spaces which can be used for festive or seasonal, as well as supporting day-to-day recreational and fitness needs.
- Connected to adjoining complementary facilities such as path networks, residential areas, play areas, the recreation grounds and transport nodes.
- Suitable for people of all capabilities, ages and backgrounds.
- Compatible with surrounding existing and proposed future uses.

**Supports an Active Lifestyle and Healthy Living**

- Opportunities for people to improve fitness, challenge themselves, connect socially and thrive.
- Spaces for group and individual exercise.
- A place of high quality amenity with places to sit, walk, run or play in the shade and to enjoy the sun.

**Appreciates and Informs About the Environment**

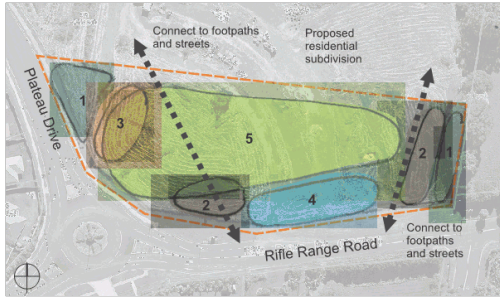
- Improves the environmental quality of the site and provides habitat.
- Reuses site materials and makes best use of local materials in construction where possible.
- Provides opportunities for education relating to the natural environment of the locality and historic uses of the site (in particular, subtropical rainforest vegetation of the plateau and the drive-in theatre).
- A place where people learn new things and create great memories.



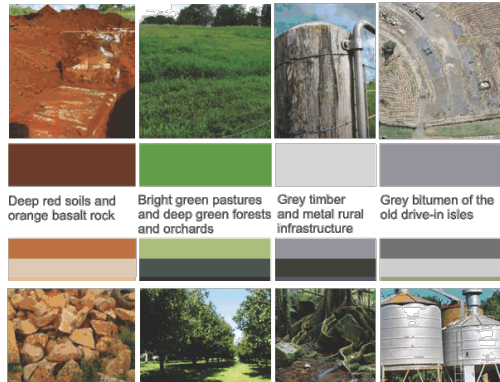
**PARKLAND CONCEPT PRECINCTS**

There are five key precincts proposed:

- Precinct 1  Rainforest Mini-Arboretum (or natural edge)
- Precinct 2  Picnic
- Precinct 3  Group Fitness and Amenities
- Precinct 4  Skate and Ride
- Precinct 5  Multi-functional Open Space



**Context Theme Generators**



**INDICATIVE CONCEPT IMAGERY**

**1. Rainforest Mini-Arboretum:**  
 Steeper land planted with local rainforest plants supported by interpretative signage - a place to explore - a place to learn - a place to relax - tactile



Above left: Wild Play area by Ian Potter, Above right: My children exploring a native garden

**2. Picnic:**  
 A place for people or groups to gather, BBQ, sit and eat - observe - supervise - socialise with others



**3. Group Fitness and Amenities:**  
 Functional equipment for street workouts and cross training to suit all ages including elderly - a place to challenge yourself - colourful - fun - run



Above: Fitness equipment montage prepared by Urban Play

**4. Skate and Ride**  
 A small skate park set within landscaped parkland, suitable for skate boards, scooters and park bikes- a place for youth/families - a place to connect - fun



Above: Kwinana Skate Park (WA) by Convic



Above left: Skate park in Woolwich Canada, Above right: Singleton Skate Park by Skate Sculpture (WA)

**5. Multi-functional Open Space:**  
 Open grassy areas which can be used for a variety of informal activities - a place to run, sit or participate in group activities - a place to gather - adaptable



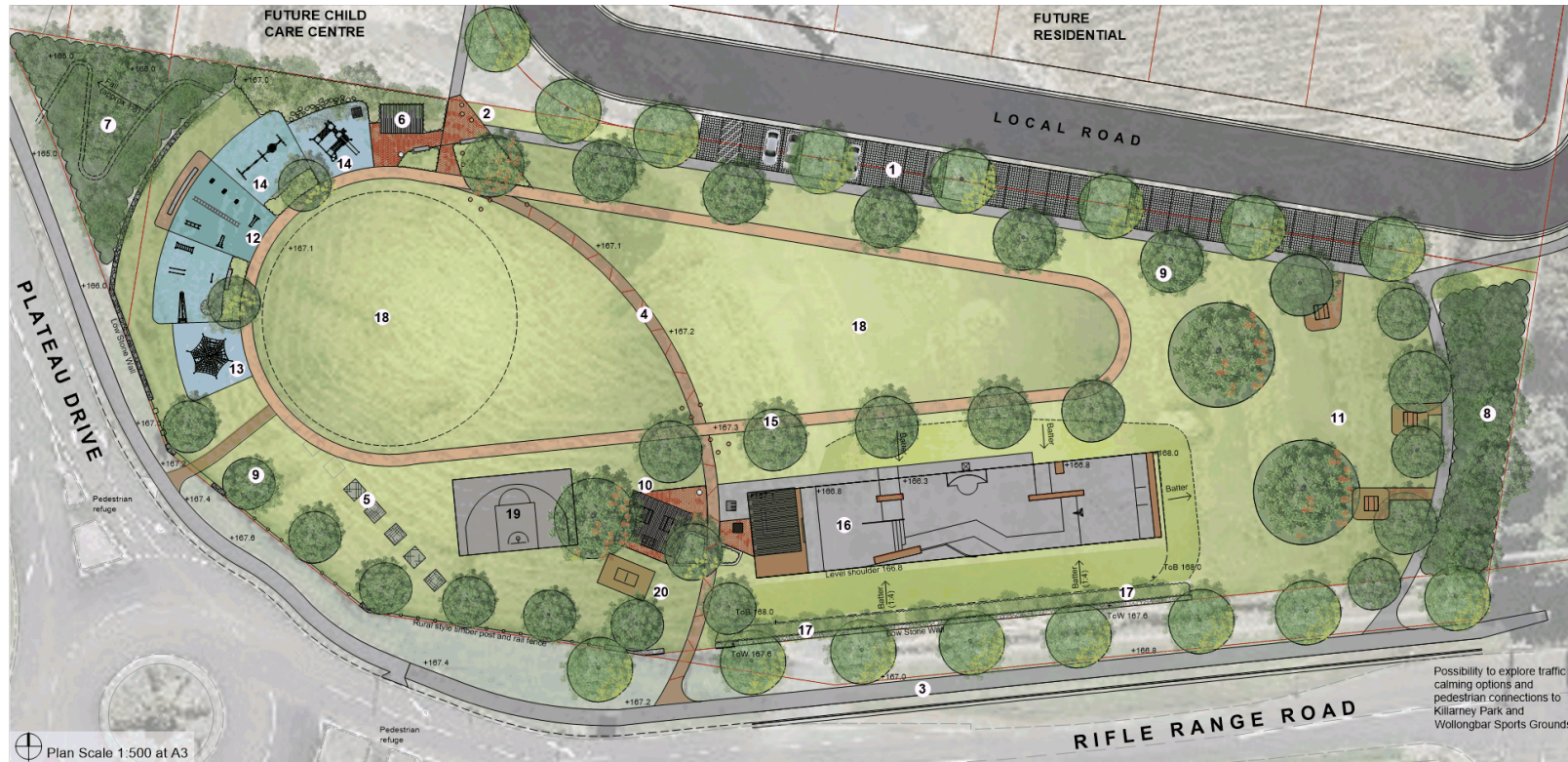
Above: Outdoor table tennis at Jamieson Park, South Penrith, hammocks, multi-purpose path circuit



Above: Adaptable spaces for group yoga, painting or cultural activities

**CONCEPT PRECINCTS + DESIGN IMAGERY**

WOLLONGBAR DISTRICT PARKLAND: FUN AND FITNESS FOR ALL  
 CHALLENGING \_ LEARNING \_ CONNECTING : EMPOWERING BODIES \_ MAKING MEMORIES



**GENERAL FEATURES**

1. Car parking - 24 spaces (22 + 2 accessible)
2. Main parkland entrance - Recycled brick paving, seating, gardens and artwork
3. Main street footpath (2m wide)
4. Park interpretative footpath (1.5m wide) with pavement etchings providing historical information about the drive-in theatre or other related themes (solar lighting at night)
5. Site of former drive-in theatre screen (footings to be removed). New collaborative art interpretative pillars (drive-in theatre theme)
6. Toilet Building - one male, one female and one unisex accessible toilet

**RAINFOREST MINI-ARBORETUM**

7. Area 1 - Subtropical rainforest species with a narrow walking trail and species information signage
8. Area 2 - Subtropical rainforest species with information signage along the pathway edge
9. Street and park trees including species tags

**PICNIC**

10. Central BBQ (2 BBQ cooking plates plus bench) and picnic area
11. Informal picnic area with table settings and large shade trees

**GROUP FITNESS AREA**

12. Fitness equipment (street workout and cross training) suitable for teenagers, adults and seniors
13. Climbing net (children and adults)
14. Juniors playground activity fort with slide and swing area (ages 3+)
15. Multi-purpose circuit pathway (250m long) with distance markers

**SKATE AND RIDE**

16. Small skate park facility suitable for skate boards, scooters and park bikes with shaded seating area at western end (day use only with low level solar security lighting at night).
17. Acoustic and observation mound.

**MULTI-FUNCTIONAL OPEN SPACE**

18. Multi-functional open space for general use (painting, outdoor learning, ball games etc)
19. Multi-court (15m x 10m) with basketball ring and backboard
20. Outdoor table tennis on hardstand (6.25m x 4.5m)

Possibility to explore traffic calming options and pedestrian connections to Killarney Park and Wollongbar Sports Grounds