

**Minutes of the 'A' Ward Committee Meeting
Held 9 July 2019
In the Committee Rooms, 40 Cherry Street, Ballina**

Time Commenced

The meeting commenced at 4.03pm.

1. Attendance and Apologies

Attendance

| | |
|----------------------|--|
| Cr David Wright | Mayor |
| Cr Phil Meehan | Councillor |
| Cr Stephen McCarthy | Councillor |
| Susan Meehan | Ballina Chamber of Commerce |
| Yvonne Scarrabelotti | Ballina CWA |
| Ross Pickering | Ballina & District Citizens & Ratepayers Association |
| Andrew Playford | Ballina Coast High School & East Ballina Lions Club. |
| Marilyn McIntosh | Ballina Evening View Club |
| Mary O'Brien | Lighthouse Day Club |
| David Felsch | Ballina Peninsular Residents Association |

Council Staff in Attendance

| | |
|----------------|---|
| Tony Partridge | Manager Support Operations |
| Kelly Brown | Director – Corporate and Community Division |
| Joanne Cordery | Secretary - Civil Services Group |

Apologies

| | |
|------------------|---|
| Cr Nathan Willis | Councillor |
| Neil Denison | Ballina Environment Society |
| Margaret Hains | Ballina Day View Club |
| John Bout | Summerhill Residents Group |
| George Young | Ballina Lions Club (apology received after meeting) |
| John Truman | Director - Civil Services Division |

2. Resignations/Changes to Memberships

John Bout representing the Summerhill Residents Group was welcomed as a new member.

3. Declarations of Interest

There were no declarations of interest.

4. Deputations

Nil

5. Confirmation of the Minutes of the Previous Meeting

The Minutes of the previous meeting held on 14 May, 2019 were accepted as a true and correct record.

**Minutes of the 'A' Ward Committee Meeting
Held 9 July 2019
In the Committee Rooms, 40 Cherry Street, Ballina**

6. Business Arising from Previous Minutes

Boat Harbour Road Bicycle Linemarking – River Street to Sunnybank Drive

The information in the staff report was noted. Ross Picking advised he did not agree with Council's position.

Request for new Park Bin in Captain Cook Park

The information in the staff report was noted.

7. General Business

NA

8. Presentation

Presentation on People and Culture Section

Council's Director Corporate and Community, Kelly Brown provided a presentation regarding Council's People and Culture section and its current activities.

9. Presentation by Ballina SES on SES Awareness

Local SES Controllers, Gerry Burnage and Graham Cork provided a presentation regarding SES Awareness Attached is a copy of the handout provided on Tsunami's for the information of the Committee.

The Committee members asked for the contact details for the SES to be provided in the minutes.

email address: bal.ops@ses.nsw.gov.au

10. Council Documents on Exhibition

The list of previously advertised documents was noted by the Committee.

11. Business Without Notice

i) *House in Kalinga Street*

Cr Meehan advised the Committee that the burnt house in Kalinga Street went to auction however it was not sold.

**Minutes of the 'A' Ward Committee Meeting
Held 9 July 2019
In the Committee Rooms, 40 Cherry Street, Ballina**

ii) Captain Cook Park

Yvonne Scarrabelotti advised that one of the lights located near the CWA in Captain Cook Park was not working.

Yvonne also advised that the plants are growing very well.

iii) Water leak in roundabout – Cherry/Tamar Street

Cr McCarthy and Ross Pickering enquired why the leak had not been repaired.

It was advised that staff were investigating this matter.

Post Meeting Note

Council staff advise that we have no water services in this location so it is unlikely a water main leak, as the water appears periodically, and the ground becomes “saturated at times”, then dry on other occasions it is most likely ground water. Council staff will continue to monitor the area.

iv) Western Arterial Road / West Ballina – Workshop Enquiry

Ross Pickering asked why he had not received a response to his correspondence regarding traffic issues in West Ballina and his request for a workshop.

Cr Meehan advised that a response would be provided to Mr Pickering the following working day and that an Information Session was going to be held on 6 August at 4.00pm for community members and Councillors would also be invited to attend.

v) Night Walk River Street

Cr McCarthy asked if night work was going to occur with the works in River Street.

It was advised that footpath and paving work would be completed at night.

Post Meeting Note

Attached for the information of the Committee is the June 2019 Fact Sheet for this project.

vi) Ferry Facebook Page

David Felsch thanked Council staff for the Ferry maintenance page, it worked well.

**Minutes of the 'A' Ward Committee Meeting
Held 9 July 2019
In the Committee Rooms, 40 Cherry Street, Ballina**

vii) Revetment Works South Ballina

David Felsch thanked Council staff for the remediation works done near his mother's property.

viii) Sunken Culvert – Carrs Bridge

David Felsch asked when the sunken culvert works might be started.

ix) Ferry Slip

David Felsch asked if there was a date for the Ferry slip.

Tony Partridge advised that the works were still being coordinated and the date will be advised once it is set.

x) Pacific Highway (Cumbalum) On/Off Ramps

David Felsch asked if there was any chance of getting on/off ramps for Cumbalum.

Cr Wright advised that communications were continuing with the RMS but we have been advised by the Minister that they won't be considering any works until after the Ballina to Woolgoolga project is finalised.

xi) Ballina Chamber of Commerce

Susan Meehan advised that the last Business After Hours meeting was held at the new 7 Mile Brewery. It was a great success and a wonderful location.

Susan also advised that the Business Awards were being held on 10 August 2019.

xii) Water Leak

Susan Meehan advised that there was water coming out of the electricity box near Bunnings. A works request will be raised to Council Staff to respond.

xiii) Naidoc Week

Andrew Playford acknowledged Naidoc week and would like to introduce a Welcome to Country to the A Ward Meetings. Andrew also thanked Council for their contribution to the Naidoc March.

xiv) Community Connect

Andrew Playford thanked Council for the Community Connect, it is a very informative document.

**Minutes of the 'A' Ward Committee Meeting
Held 9 July 2019
In the Committee Rooms, 40 Cherry Street, Ballina**

A suggestion was made by Susan Meehan that information about the SES be included in one of our issues.

xv) Ballina High School Opening

Cr Wright congratulated Ballina High School on their opening.

12. Next Meeting

The next meeting is to be held at 4.00pm on Tuesday 10 September 2019.

13. Meeting Close

There being no further business, the meeting closed at 5.30pm.

**Minutes of the 'A' Ward Committee Meeting
Held 9 July 2019
In the Committee Rooms, 40 Cherry Street, Ballina**

| A Ward Meeting Attendance Sheet – 9 July 2019 | | |
|---|---|-----------------------------|
| Name | Business | Signature |
| Cr Nathan Willis | Ballina Shire Council | Apology |
| Cr Phil Meehan | Ballina Shire Council | <i>P Meehan</i> |
| Cr Stephen McCarthy | Ballina Shire Council | <i>S McCarthy</i> |
| Cr David Wright | Ballina Shire Council | <i>D Wright</i> |
| Yvonne Scarrabelotti | Ballina CWA | <i>Yvonne Scarrabelotti</i> |
| Ms Lyn Davidson | Ballina CWA Apology - | <i>Lyn Davidson</i> |
| Mr George Young | Ballina Lions Club | <i>George Young</i> |
| Mrs Susan Meehan | Ballina Chamber of Commerce & Ballina Retail Action Group | <i>Susan Meehan</i> |
| Ms Margaret Hains | Ballina Day View Club | Apology |
| Ms Marilyn McIntosh | Ballina Evening View Club | <i>Marilyn McIntosh</i> |
| Ms Mary O'Brien | Lighthouse Day Club | <i>Mary O'Brien</i> |
| Mr David Felsch | South Ballina Community Association | <i>David Felsch</i> |
| Chris Mulner | South Ballina Community Association | <i>Chris Mulner</i> |
| Mr Stephen Wills | Ballina Bears Cricket Club | <i>Stephen Wills</i> |
| Mr Ross Pickering | Ballina & District Citizens & Ratepayers Association | <i>Ross Pickering</i> |
| Andrew Dougherty | Ballina Lighthouse & Lismore Surf Lifesaving Club | <i>Andrew Dougherty</i> |
| Therese Collick | Ballina Lighthouse & Lismore Surf Lifesaving Club | <i>Therese Collick</i> |
| Andrew Playford | Ballina Coast High School & East Ballina Lions Club | <i>Andrew Playford</i> |
| Neil Denison | Ballina Environment Society | Apology |
| | West Ballina Quays Consultative Group | <i>West Ballina Quays</i> |
| Mr John Bout | Summerhill Residents Group | <i>John Bout</i> |
| Mr John Truman | Director Civil Services Division | Apology |
| Mr Tony Partridge | Manager Support Operations | <i>Tony Partridge</i> |
| Ms Joanne Cordery | Civil Services Group | <i>Joanne Cordery</i> |
| | | |

Minutes of the 'A' Ward Committee Meeting Held 9 July 2019 In the Committee Rooms, 40 Cherry Street, Ballina

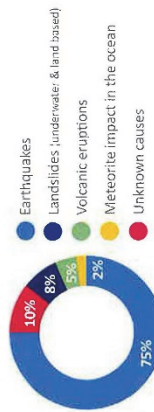
What is a tsunami

Tsunami are a series of powerful waves, the first wave is not always the largest. As tsunami waves approach shallow water, they slow down, their height grows and they get closer together. A tsunami that is invisible at sea may grow to be several metres or more in height near the coast.

Most tsunami are triggered by undersea earthquakes. The nearest active earthquake zones to NSW are the trenches to the north and south of New Zealand.



What causes a tsunami



How likely are tsunami?

There have been over 50 recorded tsunami events on the Australian coastline since European settlement. We are more likely to experience marine and immediate foreshore threat tsunami than a land inundation threat tsunami. Early evacuation could help protect many people.

Tsunami sources and travel times

| Threat | Source | Travel time | Location |
|----------|----------------------------------|--------------------------------|--|
| Local | Underwater or coastal landslides | Within minutes | NSW coastline |
| Regional | Earthquake | Could be little as 90 minutes† | Trenches to the north and south of New Zealand |
| Distant | Earthquake | Up to 12 hours | Far away in the Pacific Ring of Fire such as Chile |

How to prepare yourself

Some of the things you can do are:

- ✓ Prepare an emergency kit
- ✓ Determine if you live or work in an area to be evacuated in a land inundation threat tsunami (see map overleaf)
- ✓ Know where the nearest high ground and the evacuation areas are located
- ✓ Discuss your emergency plan with the people you know
- ✓ Identify an evacuation route to the nearest high ground
- ✓ Prepare to take your pets with you and what essential items you can easily carry
- ✓ Be aware of what to do in case there is a Tsunami Watch or Warning

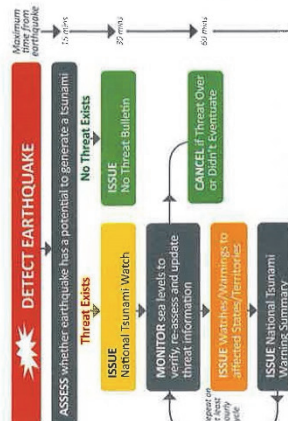


Official tsunami warnings

Tsunami Warnings have 3 different threat levels:

1. **No Threat:** an undersea earthquake has been detected, however it has not caused a tsunami, or the tsunami poses no threat to Australia and its offshore areas.
2. **Marine and Immediate Foreshore Threat:** warning of potentially dangerous rips, waves and strong ocean currents and the possibility of only some localised overflow onto the immediate foreshore.
3. **Land Inundation Threat:** warning for low-lying coastal areas of major land inundation, flooding, dangerous rips, waves and strong ocean currents.

Detecting an earthquake that may cause a tsunami
 The Joint Australian Tsunami Warning Centre detects tsunami from regional and distant sources and warns of any tsunami threat to the coast of Australia. The first stage determines if there is a possible tsunami threat to Australia.



How could I receive an official warning?

Depending on lead time and available resources official warnings may be issued using one or more of the following methods:

Tune in: Radio and television broadcasts are one way of receiving warnings. They may be accompanied by the Standard Emergency Warning Signal (SEWS) - a siren-like noise.

Log On: To the Bureau of Meteorology bom.gov.au/tsunami and NSW SES website. Official warnings may also be shared on social media including Facebook and Twitter.

Listen Out: Standard Emergency Warning Signal (SEWS) or announcement through a loud speaker.

A text or recorded message on your phone may be sent to people in the affected area.

Low flying aircraft: equipped with public address systems.

Two-way radio / Marine Satellite Phone UHF, CB marine VHF radios and where appropriate marine satellite phones. Your friends and family may pass on official warnings.

**Minutes of the 'A' Ward Committee Meeting
Held 9 July 2019
In the Committee Rooms, 40 Cherry Street, Ballina**



Ballina & Lennox Head






TsunamiSafe

Recovery

Disaster Recovery Centres may be established following major tsunami. They may provide a range of welfare services including financial assistance, personal support, organising temporary accommodation and providing information and referrals.

Emergency contacts

Police, Fire and Ambulance - 000 (Triple Zero)
Life-threatening emergencies.

NSW SES Emergency Assistance - 132 500
The deaf, hard of hearing or speech impaired can call Triple Zero (000) or SES (132 500) using the National Relay Service (NRS).

Supporting information & contacts

My RoadInfo
myroadinfo.com.au for local road information

Joint Australian Tsunami Warning Centre
(Bureau of Meteorology) - 1300 878 6264
bom.gov.au/tsunami for the latest Tsunami Warnings




FOR EMERGENCY HELP IN FLOOD, STORM AND TSUNAMI CALL

132 500

In life-threatening emergencies call 000 (Triple Zero)
For further information about tsunami visit
ses.nsw.gov.au

#NSWSES
f /NSW SES
NSW SES
#NSWSES

Natural warning signs

The natural warning signs of a tsunami are:

-  **FEEL the ground shake.** If you are near the ocean this may mean a large earthquake has happened nearby. This may generate a tsunami.
-  **SEE the ocean drop.** As a tsunami approaches the shore, the ocean may drop, but not always
-  **HEAR a roaring sound.** This may be heard before the arrival of a tsunami.

When a Tsunami Warning is issued

Act early on the first warning you receive. Actions to take include:

Marine and immediate foreshore threat

-  Get out of the water and move to high ground away from the immediate foreshore (beach, rocks, estuary etc.)
-  Boats near to shore should return to the nearest mooring. Secure your boat and move to high ground.
-  Boats located offshore should move to deep water

In the event of a **land inundation threat** you will ALSO need to do the following:

-  Move to higher ground, at least 10 metres above sea level or 1 kilometre inland
-  Take only essential items, such as important papers, family photographs and medication
-  Leave by foot, roads may be congested or closed
-  If you cannot get to higher ground seek shelter in the upper storey of a sturdy brick or concrete building
-  Do not go to the coast to watch the tsunami

After a tsunami

An **All Clear** will be issued by emergency services when it is safe to return to areas impacted by tsunami. It may not be safe to return for up to 24 hours or longer, depending on the impacts.

-  Do not go sightseeing
-  Keep listening to radio for information, updates and advice

**Minutes of the 'A' Ward Committee Meeting
Held 9 July 2019
In the Committee Rooms, 40 Cherry Street, Ballina**

» River Street Upgrade » Business FAQs



June 2019 - Project update 3

» Power and water outages

Business operators may experience power and water outages during these works. Business operators will be notified in advance by Council staff or contractors before these outages occur.

Longer term power outages will be required for reconnection to road lights and circuits. Business operators will be advised well in advance once a date for these works has been confirmed.

» Presence of dust

Some dust may be present during the construction. Council will manage this by installing banner mesh around the construction fencing, cutting the footpath pavers off site and using water carts to minimise the dust.

» Bus stop location

The bus stop has now been relocated west along River Street adjacent to the Ballina RSL outdoor car park. This will be its permanent location.

» Parking numbers

Car park spaces will decrease during the road construction, however relocating the River Street bus stop has provided extra angled car parking.

» Project phases

Each of the four zones (refer to plan over page) will go through three phases of work:

1. Road reconstruction (Council to complete)
2. Services adjustments and concrete base of footpath pavers (Council to complete)
3. Laying of footpath pavers (Council contractor to complete)

» RSL and Motel driveway access off River Street

Works are being coordinated to maintain access to these business driveways for as long as possible during the works. Council is working closely with these businesses.

» Footpath works

Footpath works will occur mainly at night except for in Zone 1 and Zone 2. Completing the footpath works at night will allow pedestrian access to be reopened for daytime business hours.

Night works go from Sunday to Thursday and usually begin at 6pm and continue through until the work is complete.

Where possible, Council is happy to work with night trading businesses who are within Zone 3 and 4. For more information, please contact Robert Hunter using the contact details below.

» Footpath accessibility

Any temporary level differences from shop entries to the footpath will be managed with temporary ramps.

» More information

Project coordinator

Jamie Fleeting, Construction Engineer - 6686 1246

Road reconstruction

Paul Crozier, Coordinator Construction - 0428 960 655

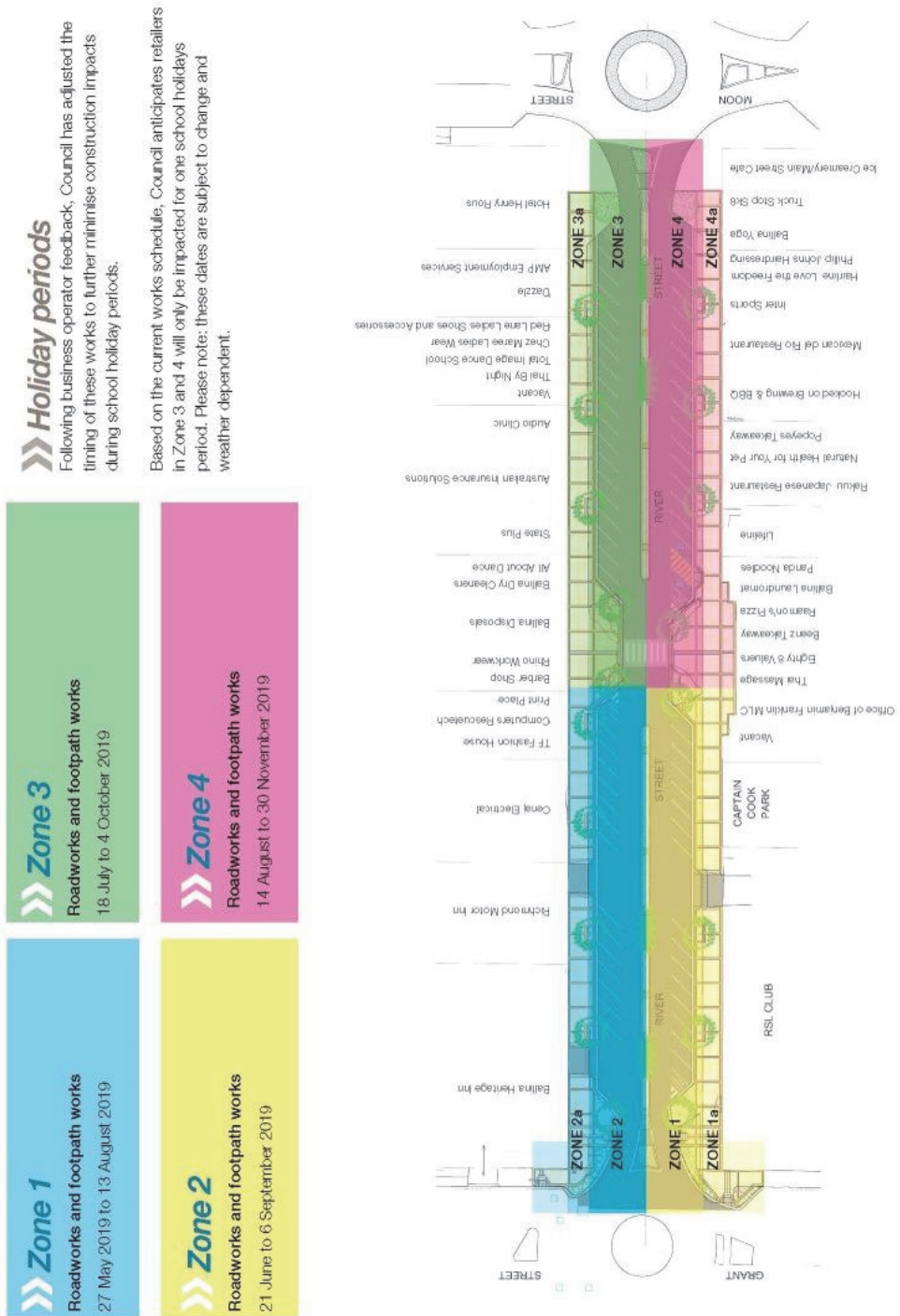
Footpath works

Robert Hunter, Team Leader Concrete Construction and Drainage - 0419 473 939

» For further information visit
ballina.nsw.gov.au (River St upgrade)

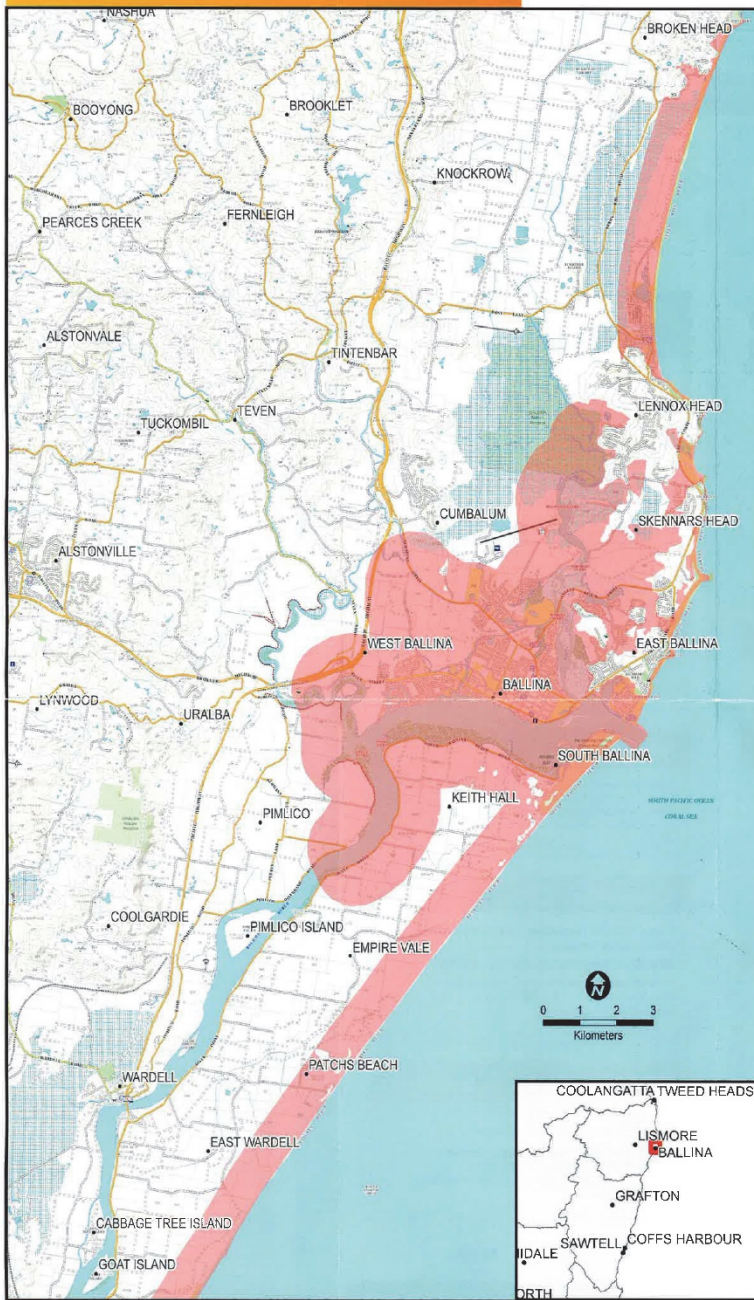
**RIVER STREET
upgrade**

**Minutes of the 'A' Ward Committee Meeting
Held 9 July 2019
In the Committee Rooms, 40 Cherry Street, Ballina**



**Minutes of the 'A' Ward Committee Meeting
Held 9 July 2019
In the Committee Rooms, 40 Cherry Street, Ballina**

Ballina & Lennox Head



KEY:



**Tsunami
Evacuation
Area**

KNOW YOUR RISK

Are you at risk?

The areas identified on the map can be significantly affected by tsunami. It is important to be prepared. Always prioritise life over property damage by leaving the area as soon as a Tsunami Warning is issued. This brochure contains information on the areas requiring evacuation in your local area for a land inundation threat. It can help you prepare for a tsunami. ~~It does not contain information on assembly areas.~~

 **Act early on the first warning you hear**

Disclaimer: NSW SES tsunami safety advice states people go to higher ground, at least 10m above sea level, or if possible move at least 1km away from all beaches and the water's edge of harbours and coastal estuaries. The evacuation areas depicted in this map extend 10km up estuaries. They do not depict inundation areas. These broad evacuation areas will be used by the NSW SES for tsunami response planning in the event of a land threat tsunami, and may change depending on the size of the tsunami forecast. They are conservative and based on the best information available at the time. Online maps (<https://www.nsw.gov.au>) will be updated as new information becomes available. This map is current at the time of print. Please refer to www.nsw.gov.au for the most up to date information.

Copyright © State of New South Wales, NSW State Emergency Service 2017 and © State of New South Wales, Land and Property Management Authority 2017.

