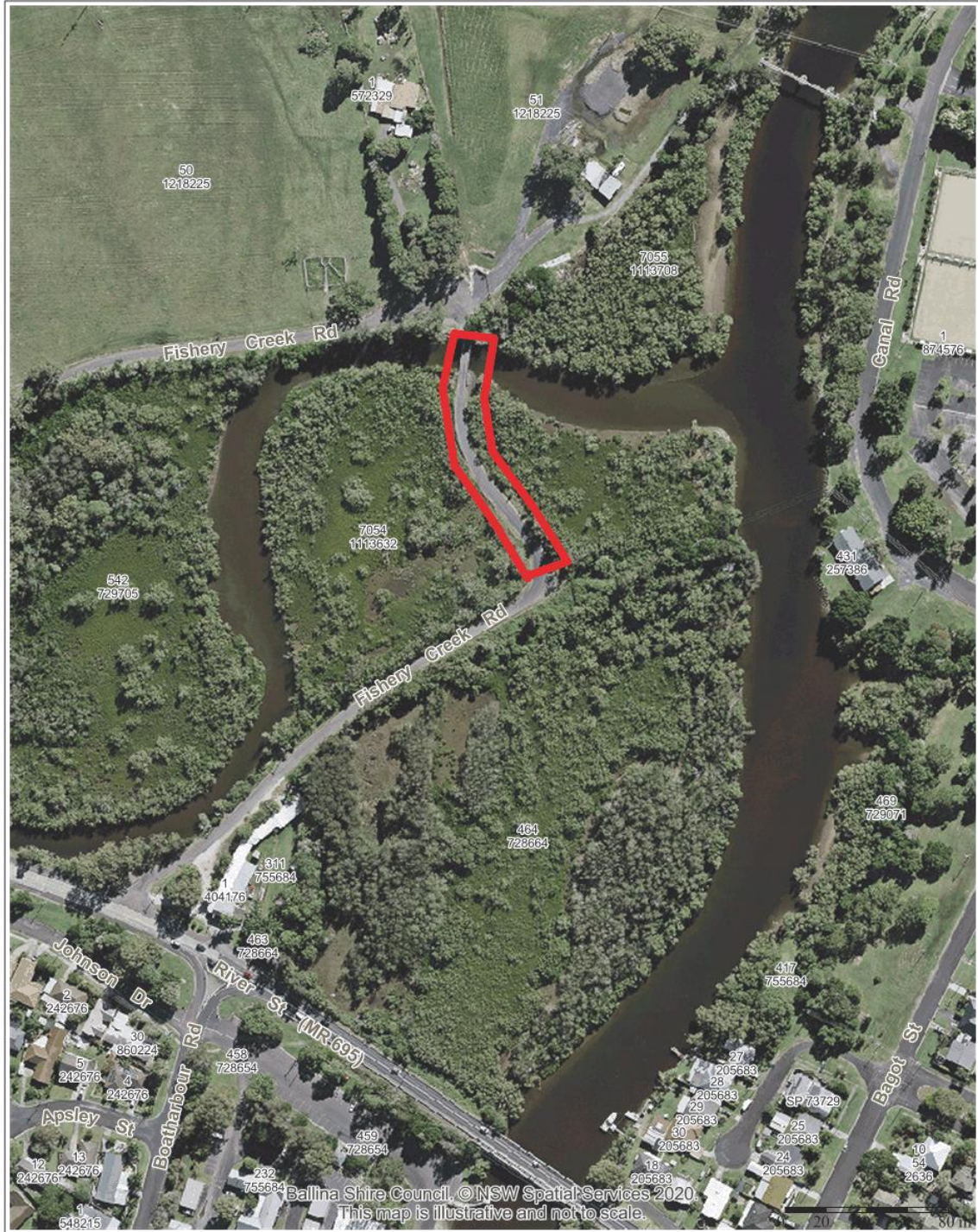


10.1 **Fishery Creek Road - Acquisition of Crown Land**



Ballina Shire Council
40 Cherry Street
BALLINA NSW 2478

PO Box 450
BALLINA NSW 2478

1300 864 444
ccouncil@ballina.nsw.gov.au
www.ballina.nsw.gov.au



**Proposed Land Acquisition
Fishery Creek Road, West Ballina**

ballina shire council
geographical information system

Projection: GDA94 / MGA zone 56
Date: 9/07/2020

© Ballina Shire Council © NSW Spatial Services 2020
While every care is taken to ensure the accuracy of this product, Ballina Shire Council and the Local Government of New South Wales do not accept any liability for errors or omissions, whether in form or substance, or for any part of the product or for any loss or damage, including indirect or consequential loss or damage, arising from the use of this product. The user of this product is responsible for ensuring that the product is used in accordance with the intended purpose and for any loss or damage, including indirect or consequential loss or damage, arising from the use of this product.

10.1 Fishery Creek Road - Acquisition of Crown Land



Ballina Shire Council
 40 Cherry Street
 BALLINA NSW 2478
 PO Box 450
 BALLINA NSW 2478
 1300 864 444
 council@ballina.nsw.gov.au
 www.ballina.nsw.gov.au



**Proposed Land Acquisition
 Fishery Creek Road, West Ballina**

ballina shire council
 geographical information system

Projection: GDA94 / MGA zone 56
 Date: 10/07/2020

© Ballina Shire Council © NSW Spatial Services 2020
 While every care has been taken to ensure the accuracy of this product, Ballina Shire Council and the Local Government Federation disclaim all liability for any errors or omissions in this product. This map is illustrative and not to scale. It is not intended to be used as a legal document. It is not intended to be used as a legal document. It is not intended to be used as a legal document.