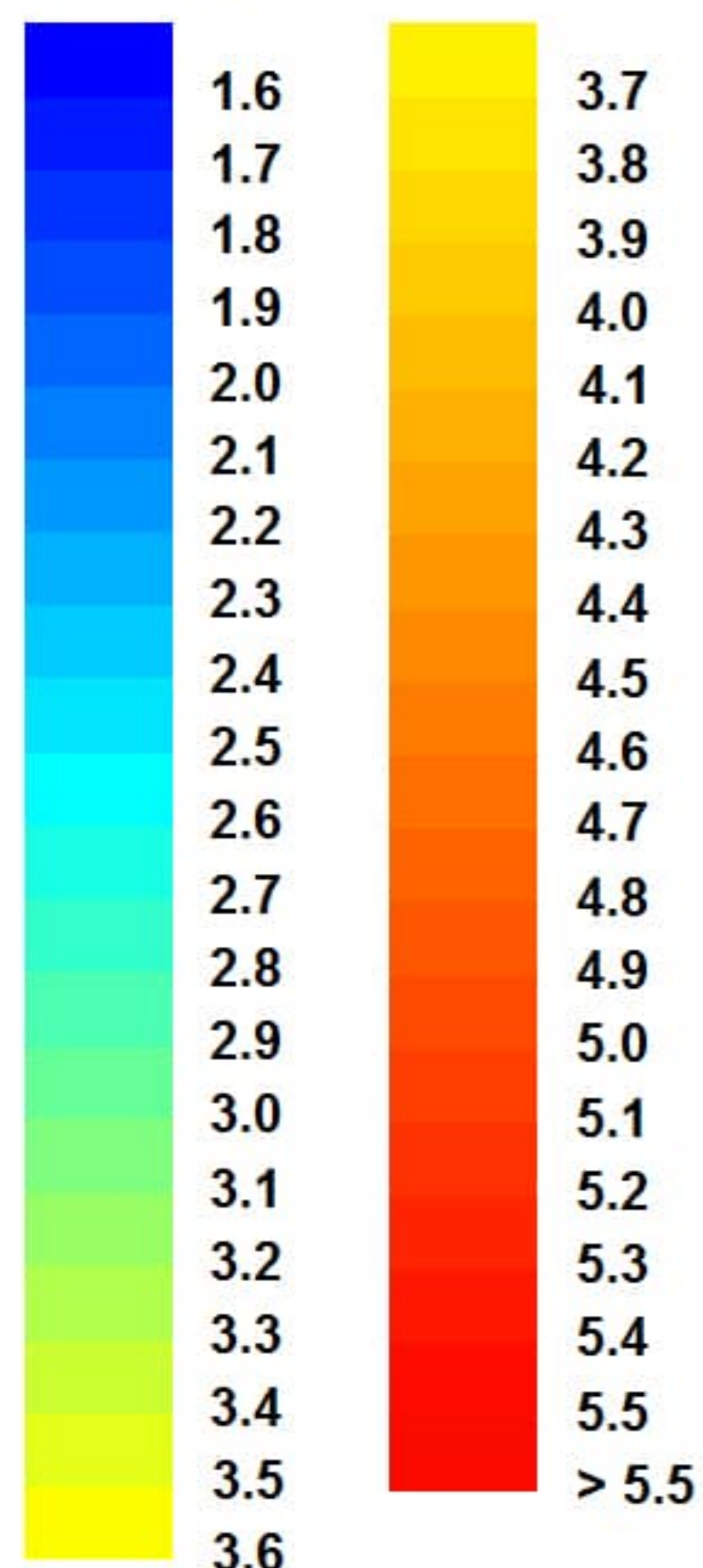


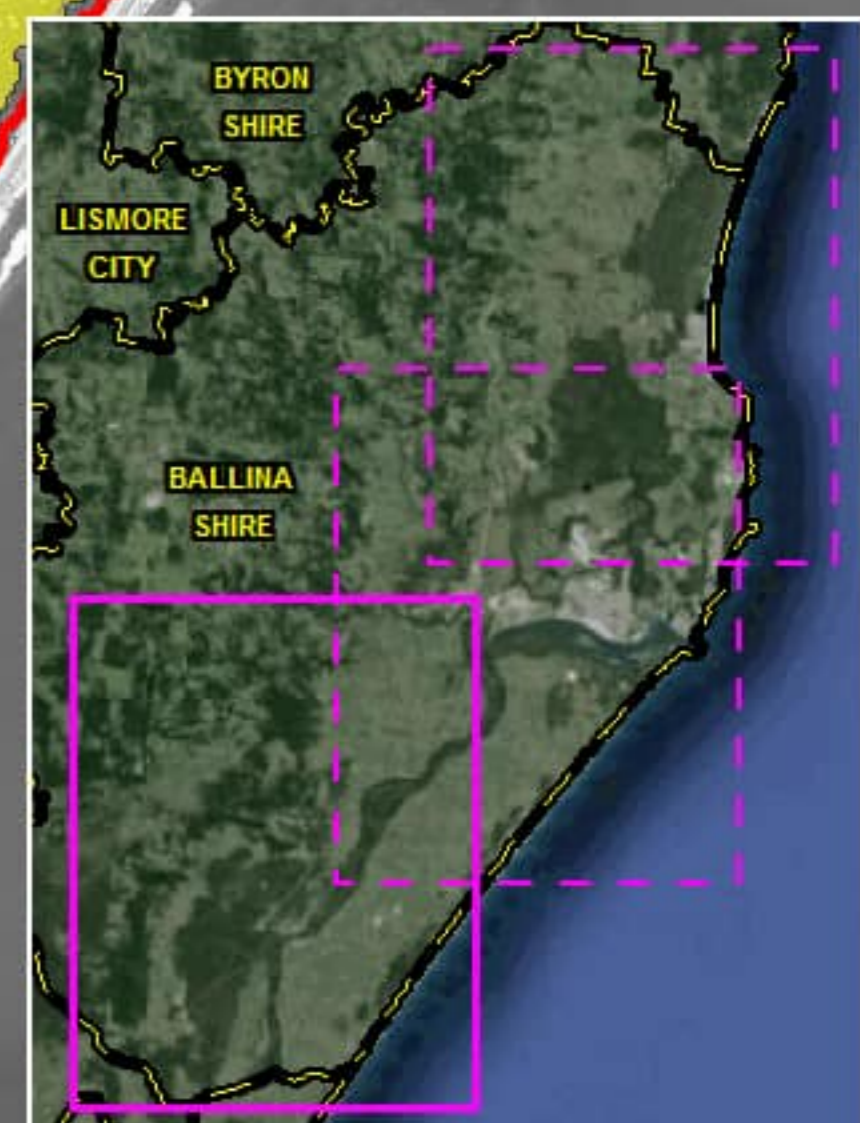
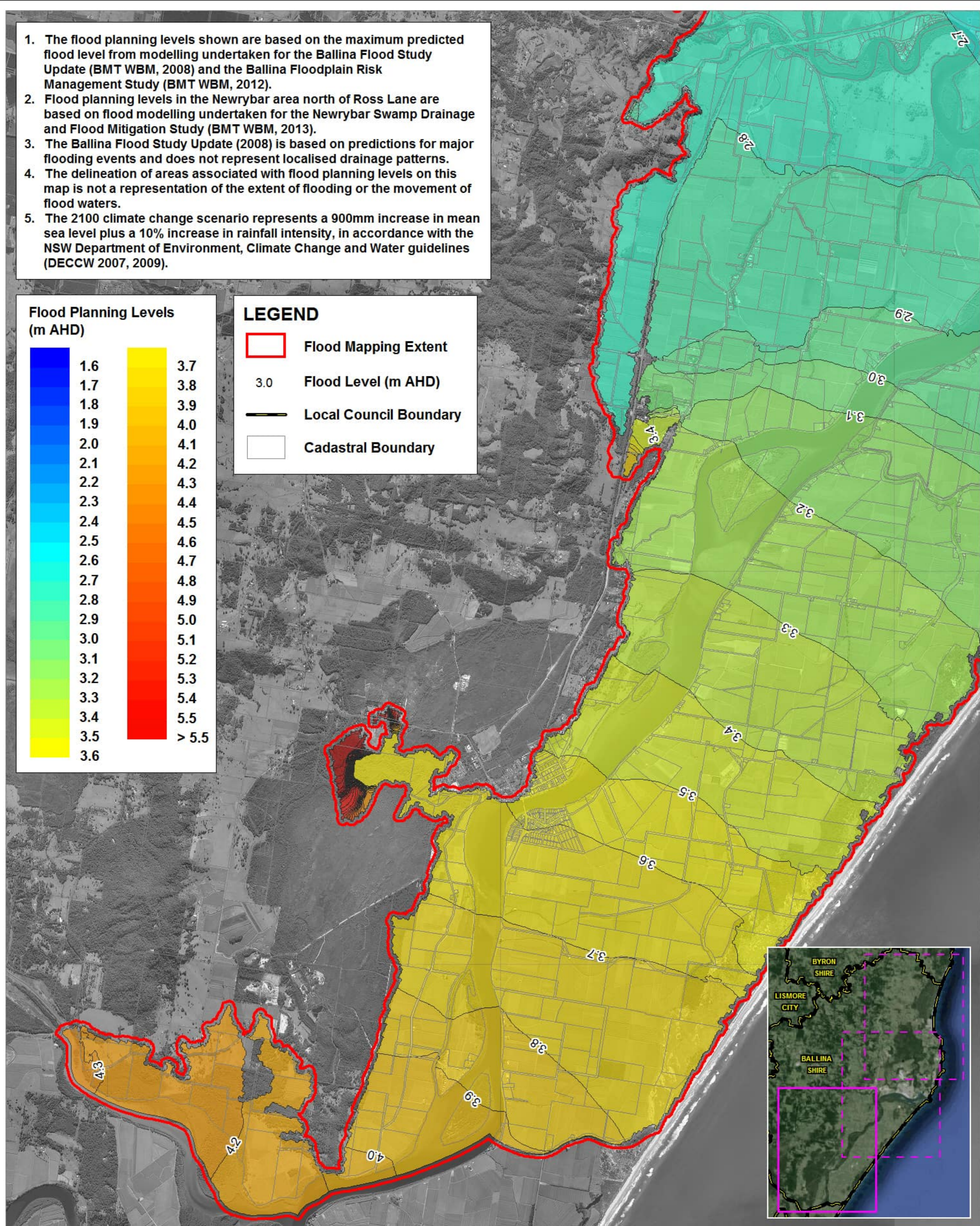
1. The flood planning levels shown are based on the maximum predicted flood level from modelling undertaken for the Ballina Flood Study Update (BMT WBM, 2008) and the Ballina Floodplain Risk Management Study (BMT WBM, 2012).
2. Flood planning levels in the Newrybar area north of Ross Lane are based on flood modelling undertaken for the Newrybar Swamp Drainage and Flood Mitigation Study (BMT WBM, 2013).
3. The Ballina Flood Study Update (2008) is based on predictions for major flooding events and does not represent localised drainage patterns.
4. The delineation of areas associated with flood planning levels on this map is not a representation of the extent of flooding or the movement of flood waters.
5. The 2100 climate change scenario represents a 900mm increase in mean sea level plus a 10% increase in rainfall intensity, in accordance with the NSW Department of Environment, Climate Change and Water guidelines (DECCW 2007, 2009).

Flood Planning Levels (m AHD)



LEGEND

- Flood Mapping Extent
- Flood Level (m AHD)
- Local Council Boundary
- Cadastral Boundary



Title:
Flood Planning Levels (m AHD)
100 Year ARI Flood Levels - 2100 Climate Change Scenario

Figure:
FPL 2c 2100

Rev:
D

BMT WBM endeavours to ensure that the information provided in this map is correct at the time of publication. BMT WBM does not warrant, guarantee or make representations regarding the currency and accuracy of information contained in this map.

