

*ballina* shire council 

# YOUR GUIDE TO LIVING WITH RECYCLED WATER IN THE BALLINA SHIRE.



## YOUR GUIDE TO USING RECYCLED WATER.

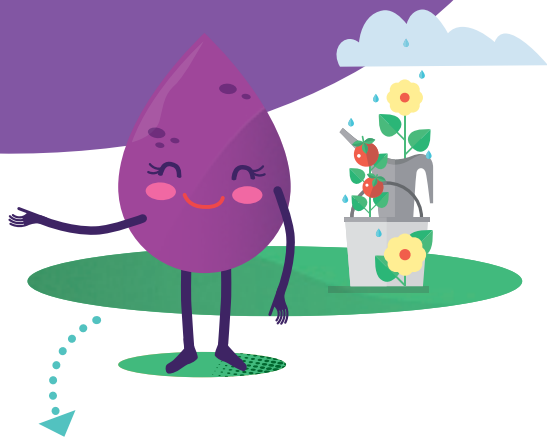
In Ballina Shire we use millions of litres of drinking water every year. However, it's not all needed for watering the garden, flushing the toilet and washing our clothes. Recycled water is a sustainable alternative, as it replaces drinking water for uses that don't really need it.

Homes with recycled water can be easily recognised by the separate purple coloured taps and meters.

### WHAT IS RECYCLED WATER?

You may not realise it, but we're all an important starting point in the process of producing recycled water. The wastewater from our homes is transferred to a state-of-the-art treatment plant where it undergoes a rigorous treatment process. It works hard to produce high quality recycled water which meets Australian standards as a safe water supply.

Recycled water is suitable for many household purposes, but not for drinking or other personal uses. It's supplied to your toilets, outdoor taps and cold water washing machine taps. For more information on the treatment process, go to [ballinawater.com.au](http://ballinawater.com.au).



#### Recycled water CAN be used for:

- ✓ cold water washing machine tap
- ✓ irrigating garden plants, herbs and vegetables
- ✓ ornamental ponds
- ✓ washing your pets
- ✓ toilet flushing
- ✓ washing pathways, cars, bikes and boats

#### Recycled water CANNOT be used for:

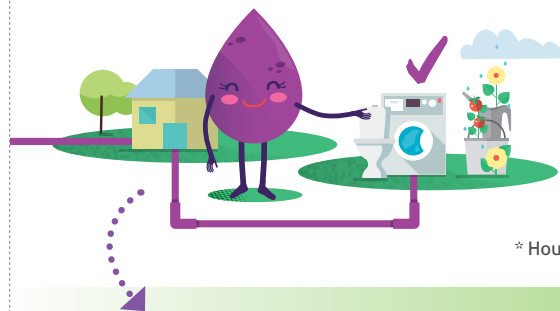
- ✗ drinking
- ✗ cooking or other kitchen purposes
- ✗ baths, showers or other personal washing
- ✗ swimming pools or leisure water use
- ✗ rainwater tanks

## WHAT YOU NEED TO DO.

It's important that you inform all visitors to your home about recycled water and what it can and cannot be used for. If you do accidentally drink it – don't panic. The likelihood of you falling ill is extremely low because it is thoroughly treated and monitored to assure its high quality. However, any signs of illness should be acted upon by seeking medical advice.

You can identify recycled water by its purple pipes, taps and meter. Recycled water fittings all need to be marked with signage that says: *Recycled Water Do Not Drink* and these signs should not be changed or painted over in any way.

For further information about fitting and signage requirements read the dual water supply plumbing policy available via the policies tab at [ballinawater.com.au](http://ballinawater.com.au).



### YOUR BILL

Council will read your drinking water and recycled water meter to measure the volume of each type of water you've used. We use this to calculate your bill. The good news is recycled water costs less than your drinking water rate. Even better, you will use less drinking water when using recycled water.

### YOUR GARDEN

Your garden, herbs and lawn will love recycled water so use as much of it as you like, but do it wisely. We suggest, watering at the roots regularly in the morning and evenings and try using a garden mulch to retain extra water.

### YOUR LAUNDRY

About 15-20%\* of all water consumed in the home is used in the laundry, making this room a high consumer of water and energy. Using recycled water in your cold water washing machine tap can help decrease your water bill and the impact of wastewater discharge on our waterways.

### YOUR TOILETS

Around 10-15%\* of all water consumed in the home is flushed down the toilet. That's why using recycled water in your toilets is a smart move environmentally and financially.

\* Household water usage figures taken from [savewater.com.au](http://savewater.com.au).

## WHAT ARE THE BENEFITS OF RECYCLED WATER?

- ✓ Available 24/7 and during periods of drought
- ✓ Costs users less than the usual drinking water rate
- ✓ Takes pressure off our drinking water supplies
- ✓ Helps create cleaner waterways due to advanced treatment processes
- ✓ Prepares the region for population growth





## IS IT TIME TO CHECK YOUR PLUMBING?

All new houses will have their plumbing inspected by a Ballina Shire Council representative before recycled water enters their property. This will make sure your house meets regulatory requirements and Council's conditions. It is therefore safe to receive recycled water.

Council inspections will then occur every five years but we also recommend that you conduct your own plumbing check every year to ensure you are confident the correct water is going to the correct fixtures.

If you encounter problems whilst undertaking the check (e.g. sink taps don't run dry when they should), you will need to contact a certified plumber or call Council on 02 6686 4444 for assistance.

### Check your home's recycled water connection:

- STEP 1** Turn off the drinking water supply at your property's meter and rainwater tank pump or valve.
- STEP 2** Turn on all internal drinking water taps. Taps should run dry.
- STEP 3** Flush all toilets. Toilets should refill if connected to recycled water supply.
- STEP 4** Turn on your external taps. Your drinking water tap should run dry. Taps continuing to run are connected to recycled water supply and should be coloured purple and marked with appropriate signs. Turn your drinking water supply back on.

### Check your home's drinking water connection:

- STEP 1** Turn off your recycled water supply at your property's purple meter and rainwater tank pump or valve. Run recycled water supply dry via your purple external taps or toilet flushing.
- STEP 2** Turn on internal drinking water taps, such as the shower or kitchen sink tap. If these taps do not flow they are connected to the incorrect supply.
- STEP 3** Turn your recycled water supply back on at your property's purple water meter.

### Need more info?

Council Customer Service Centre:

02 6686 4444

40 Cherry Street, Ballina

**ballina**water

**ballinawater.com.au**