

NO STOPPING



Fine exceeds \$410 and attracts a penalty of two demerit points.

What does it mean? You cannot stop in this area for any reason.

Why is it there? To keep sight lines clear for drivers and children so both have more time to avoid accidents.

Stopping on a continuous YELLOW LINE will also attract a \$320 fine.

A driver must not stop at the side of a road marked with a continuous yellow edge line.

It means the same as the No Stopping sign.



picking up your children after school — have a plan

Plan with your child how you will collect them:

- **When and where will you be after school?**
- **Where should your child wait?**

Ensure you are safely and legally parked before allowing children to get into your vehicle. Never allow a child to enter your vehicle while you are in traffic.

Your school may have some arrangements in place to help you collect your children.



no apologies, no excuses

When it comes to child safety, Ballina Shire Council makes no apologies for issuing fines to drivers who break the law in and around school zones.

Illegal parking in school zones puts children at risk and endangers lives. Parking offences in school zones carry heavy fines and loss of demerit points.

Parking restrictions help to increase safety and access to schools in high demand times.

If you experience a problem with illegal or dangerous parking at your school, contact

Ballina Shire Council

PO Box 450

Ballina NSW 2478

Phone 1300 864 444

Email council@ballina.nsw.gov.au



safe parking in school zones in ballina shire



*your child is
worth the extra
time it takes*



safe parking in school zones

As a community we need to ensure that children have safe passage to and from school. To improve road safety we need your assistance to understand the parking restrictions and teach our children to be safe around traffic, especially in and around school zones.

ROAD SAFETY TIPS:

- Always supervise a child and hold their hand until they are at least 8 years old.
- Closely and actively supervise your child cross the road until they are at least 10 years old.
- **STOP!** One step back from the kerb.
- **LOOK!** For traffic to your right, left and then right again.
- **LISTEN!** For sounds of approaching traffic.
- **THINK!** Whether it is safe to cross.

Schools are areas where there is a lot of interaction between cars and pedestrians; including children. Children are small, hard to see, behave unpredictably and are extremely vulnerable. Their lack of road experience means it is difficult for them to judge dangerous situations.

Extra care needs to be taken when driving and parking in and around school zones, even when you think there are no children around.

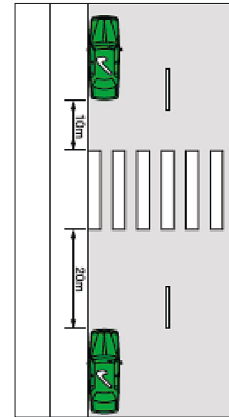
important road rules in school zones

PEDESTRIAN CROSSINGS

Fine exceeds \$544 and attracts a penalty of two demerit points.

What is the rule? You must not stop within 20 metres before a pedestrian crossing or 10 metres after a pedestrian crossing unless there is a control sign permitting parking.

Why? To ensure that pedestrians can have a clear view of approaching vehicles and drivers can see pedestrians who are about to cross the road.

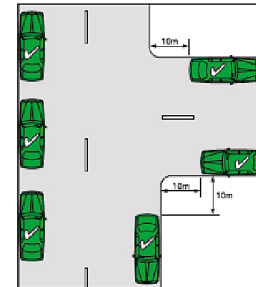


INTERSECTIONS

Fine exceeds \$544 and attracts a penalty of two demerit points.

What is the rule? You must not stop within 10 metres of an intersection.

Why? To ensure that there is a clear view of children crossing the road at the intersection.

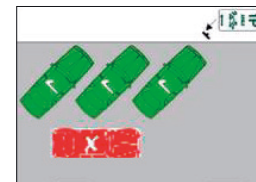
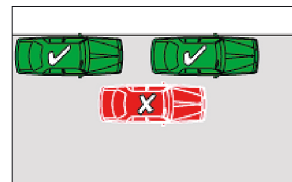


DOUBLE PARKING

Fine exceeds \$410 and attracts a penalty of two demerit points.

What is the rule? You may not stop on the road adjacent to another vehicle at any time even to drop off or pick up passengers.

Why? Double parking forces other cars to go around you causing traffic congestion and reduces the view of drivers and children crossing the road.



important signs around schools

BUS ZONE

Fine exceeds \$410 and attracts a penalty of two demerit points.

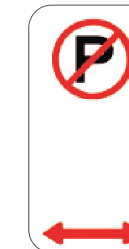


What does it mean? You must not stop or park in a bus zone unless you are driving a bus.

Why? To provide a safe place for large buses to set down and pick up passengers. Cars parking in bus zones put lives at risk by forcing buses out of "their" safety zone.

NO PARKING

Fine exceeds \$227 and attracts a penalty of two demerit points.



What does it mean? You can stop in a NO PARKING zone for a maximum of two minutes to drop off and pick up passengers. The driver must stay within three metres of the vehicle at all times.

Why? To provide a safe place for older children to be set down and picked up without endangering other children.

NO STOPPING ON PATH/NATURE STRIP

Fine exceeds \$410 and attracts a penalty of two demerit points.

What does this mean?

You cannot stop in this area for any reason.

Why? To keep sight lines clear for drivers and pedestrians.

