



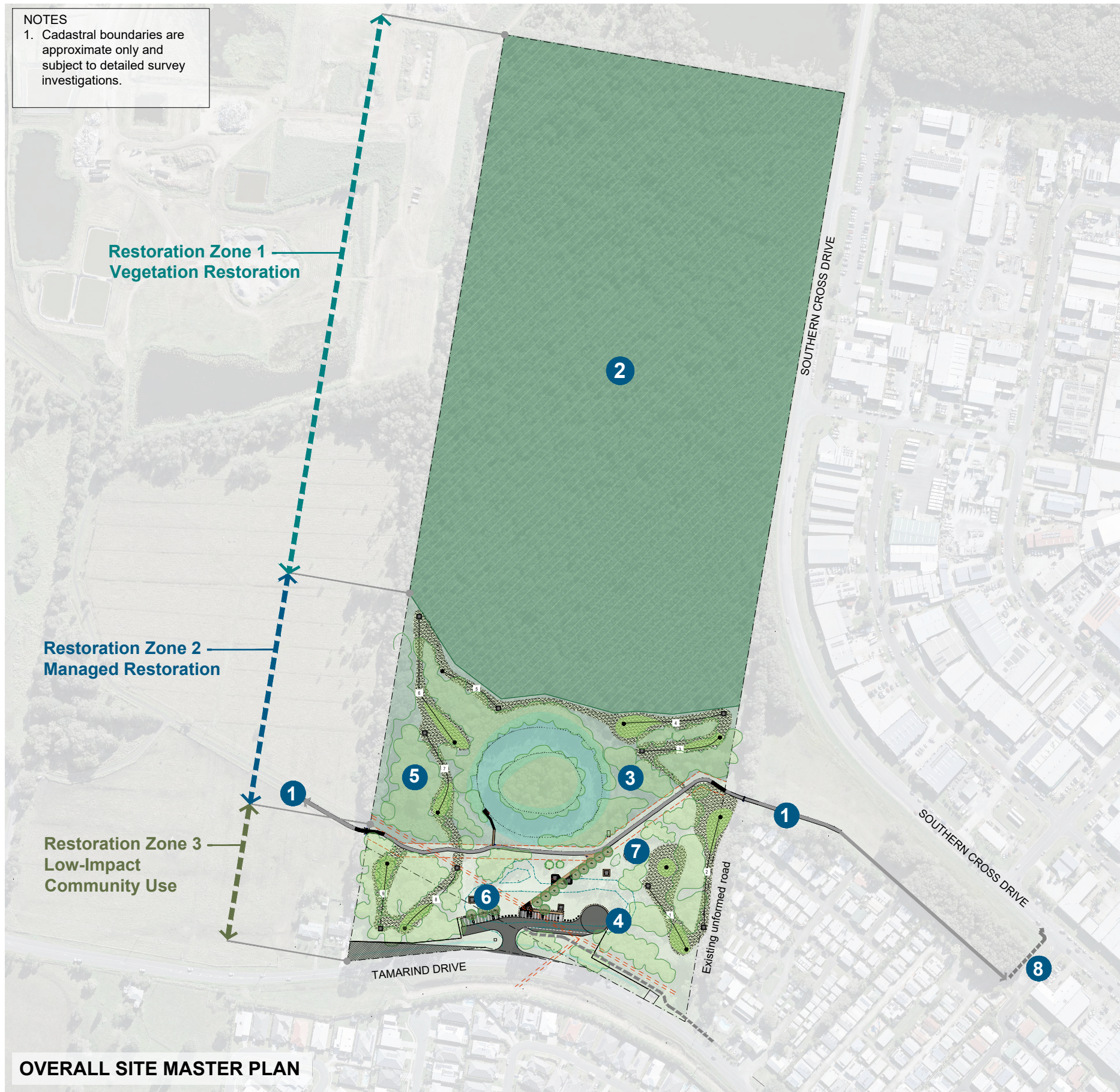
# Bicentennial Park, Ballina

MASTER PLAN (Adopted 27/2/2025)

Revised 05 February 2025

**ballina**  
shire council

**NOTES**  
 1. Cadastral boundaries are approximate only and subject to detailed survey investigations.



**OVERALL SITE MASTER PLAN**

**SITE DETAILS**

- Lots 310 and 387 in D.P. 755684 at 150 Tamarind Drive Ballina.
- NSW Crown Land (Reserve R97297) managed by Ballina Shire Council.

**PURPOSE OF THE PLAN**

The master plan seeks to reinforce the primary function of the site, as defined by the *Plan of Management for Community Land*, as a **Crown Reserve for the purpose of preservation of native flora and fauna**. The plan continues to support some low-impact community uses compatible with a natural area (bushland).

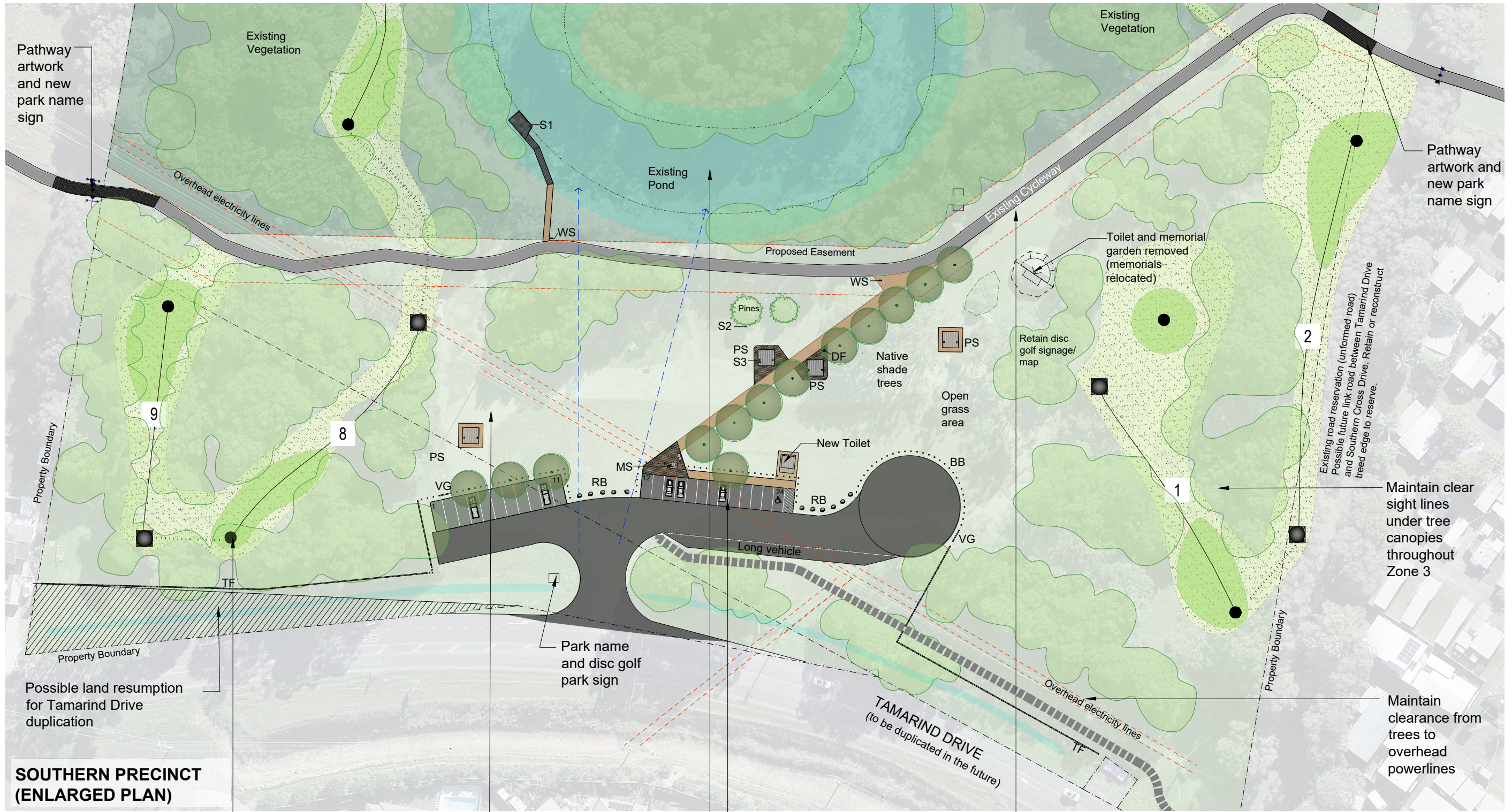
**SITE MASTER PLAN KEY FEATURES**

- 1 Shared pathway connection - The shared pathway connection from Cumbalum to Ballina is retained (easement over sewer rising main in the same corridor).
- 2 Restoration Zone 1 (Vegetation restoration) - Weed management is undertaken and vegetation regenerated to preserve and restore the area for native flora and fauna.
- 3 Restoration Zone 2 (Managed restoration) - Weed management is undertaken in aquatic and terrestrial areas and vegetation regenerated to preserve and restore the area for native flora and fauna whilst maintaining some open grass areas for disc golf. A boardwalk platform provides opportunities to observe wildlife.
- 4 Restoration Zone 3 (Low-Impact community use) - An open grass area is retained for informal recreation and outdoor learning. Low areas are toppedressed to improve usability after rainfall. Vegetation is managed to improve passive surveillance and the Gallipoli Pines and memorials are preserved and supported by new interpretative signage. Picnic settings provide places for people to sit in shade and sunlight.
- 5 Disc golf course - The disc golf course (shown on plan) is retained for ongoing community use. New tees provide a dual tee, 18 hole facility.
- 6 Car and long vehicle day parking - A reconfigured parking area provides spaces for cars, caravans and RV's to park for day use and is connected to the shared pathway and on-street parking on Southern Cross Drive.
- 7 Toilet block removed - The existing toilet block is removed and a new unisex accessible toilet built.
- 8 Connect cycleway to Southern Cross Drive verge parking, bus shelter and future Tamarind Drive pathway network.

Refer to enlarged plans on pages 3 - 5 for further detail.



0 100 200



**SOUTHERN PRECINCT  
(ENLARGED PLAN)**

Disc golf course - Retain disc golf course and improve drainage where required. Extend existing tee pads and provide new tees and signage making a dual tee, 18 hole facility that utilises the existing grass areas.

Central open space and outdoor learning area - Progressively remove weed trees throughout Zone 3 (or replace with natives) and under-prune native trees to maintain clear sight lines under tree canopies. Provide picnic shelters and a drinking fountain for day use and open areas for small group outdoor environmental education opportunities.

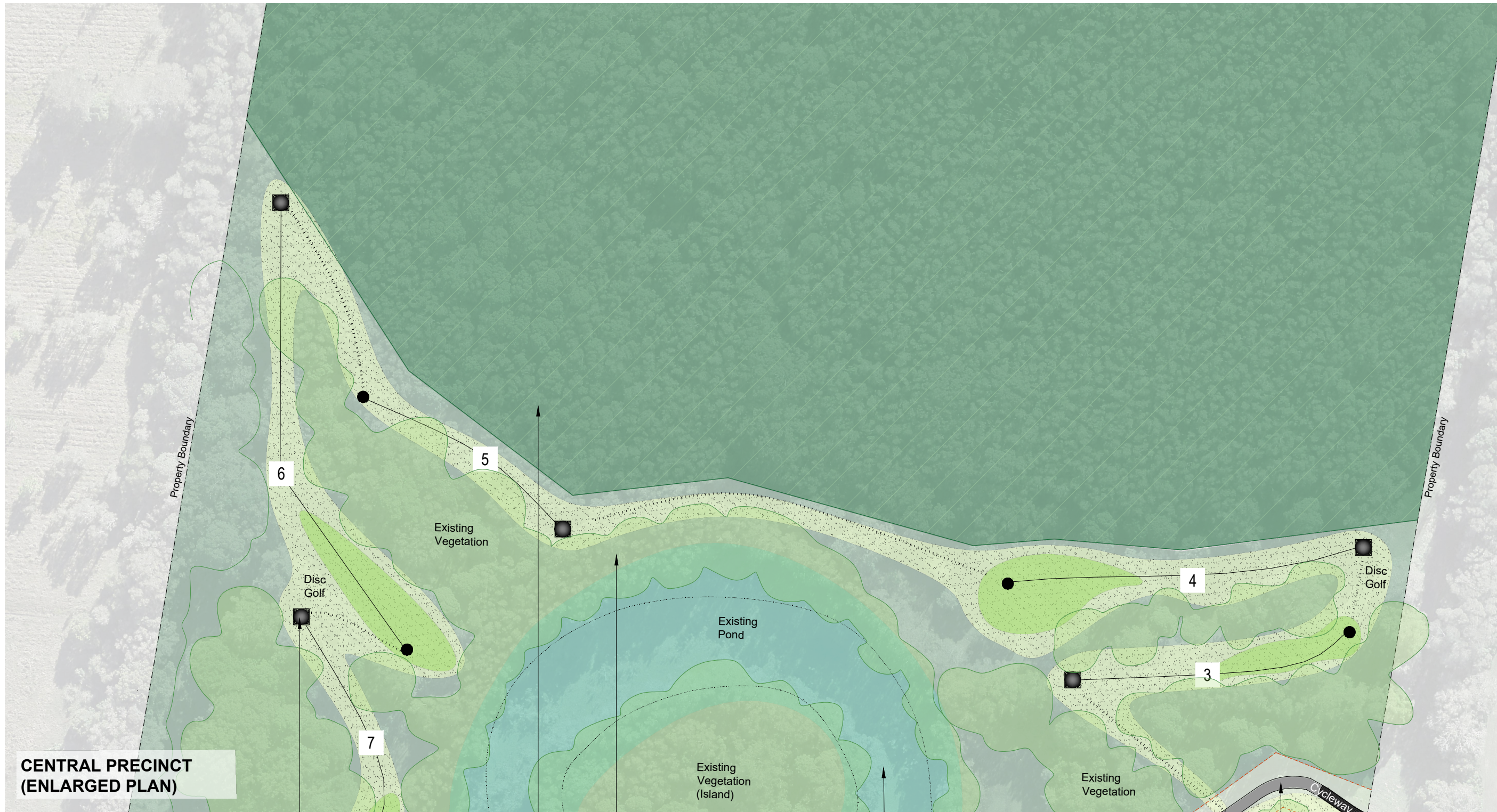
Existing pond - Undertake pond restoration works to remove weeds and reinstate views to the water. Provide a low boardwalk and platform for observing wildlife.

New parking area - Decommission the existing parking area and toilet block and construct a new day-use car park from the existing driveway that includes 13 car spaces (including 1 x accessible space), 11 large vehicle spaces (7.5m long) also for general use, and a layby area for up to 3 caravans. Connect the parking area to the cycleway and overflow on-street parking on Southern Cross Drive and provide shade trees.

Existing cycleway - Retain the existing cycleway and install paving artwork at the western and eastern park entry points to demarcate the park extents. Include interpretative and wayfinding signage. Maintain clear sight lines around the cycleway for passive surveillance.

- LEGEND**
- VG Vehicle access gate
  - S Interpretative signage
  - S1 - Pond fauna
  - S2 - Galipolli pines
  - S3 - Memorial plaques
  - WS Wayfinding signage
  - MS Park map sign
  - BB Bollard barrier edge
  - TF Timber post and rail farm-style fence
  - RB Rock barrier edge
  - PS Picnic shelter
  - DF Drinking fountain





**CENTRAL PRECINCT  
(ENLARGED PLAN)**

Disc golf course - Retain disc golf course. Provide new tees making a dual tee, 18 hole facility. Undertake weed tree management in consultation with the disc golf club to retain course technical integrity.

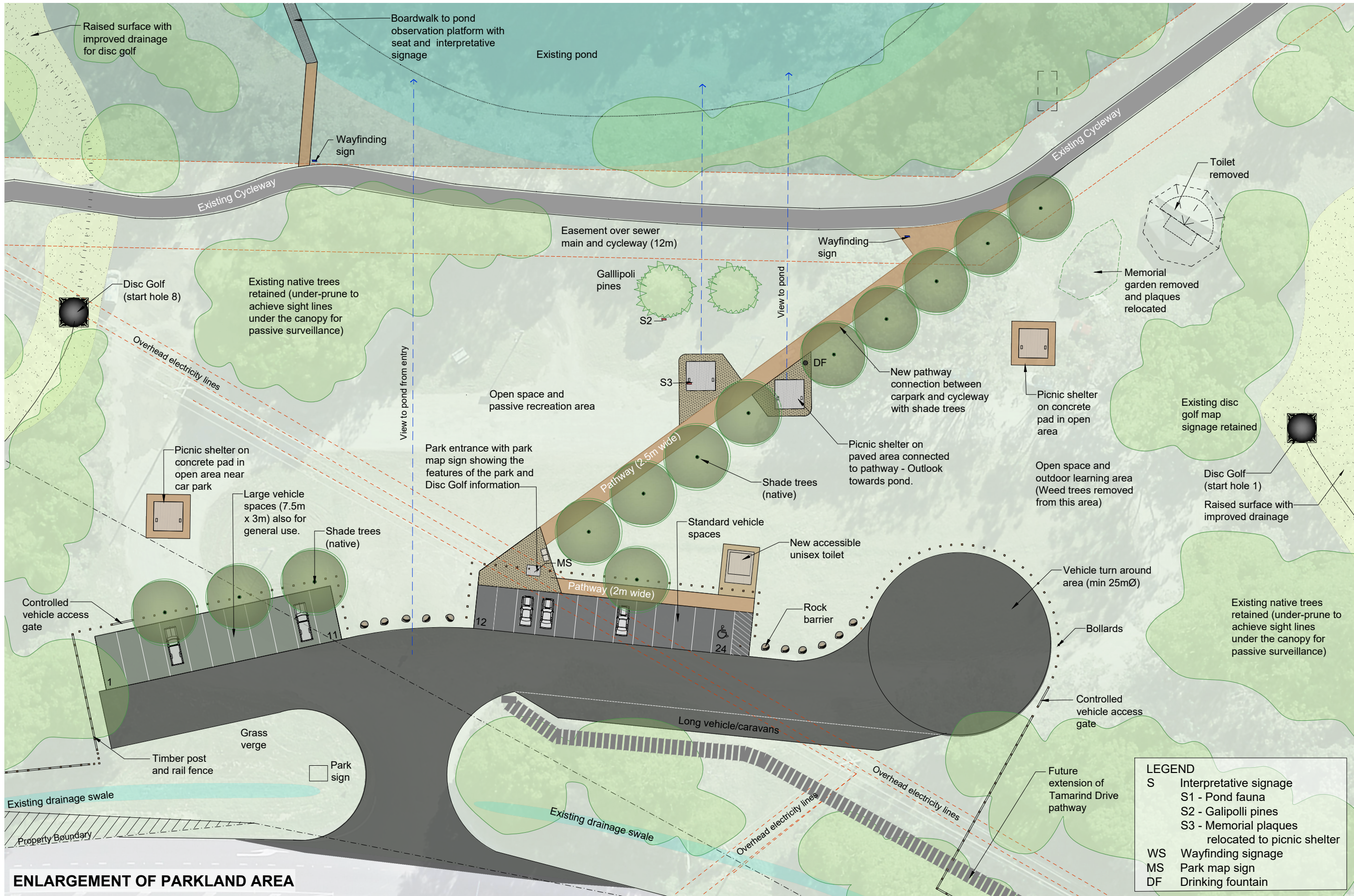
Restoration Zone 1 (Vegetation restoration) - Undertake weed management and vegetation regeneration to preserve and restore the area for native flora and fauna. Restoration should be undertaken in accordance with a *Vegetation Management Plan*.

Restoration Zone 2 (Managed restoration) - Undertake weed management in aquatic and terrestrial areas and vegetation regeneration to preserve and restore the area for native flora and fauna whilst maintaining some open grass areas for disc golf. A boardwalk platform provides opportunities to observe wildlife.

Existing pond - Undertake pond restoration works and reinstate views to the water from the parkland area. Provide bird perches and other habitat support on the pond island.

Existing cycleway - Retain the existing cycleway and install paving artwork at the western and eastern park entry points to demarcate the park extents. Include interpretative and wayfinding signage. Maintain clear sight lines around the cycleway for passive surveillance.





*ballina*  
shire council

**Ballina Shire Council**

40 Cherry Street Ballina NSW 2478

p: 1300 864 444 e: [council@ballina.nsw.gov.au](mailto:council@ballina.nsw.gov.au)

[ballina.nsw.gov.au](http://ballina.nsw.gov.au)