

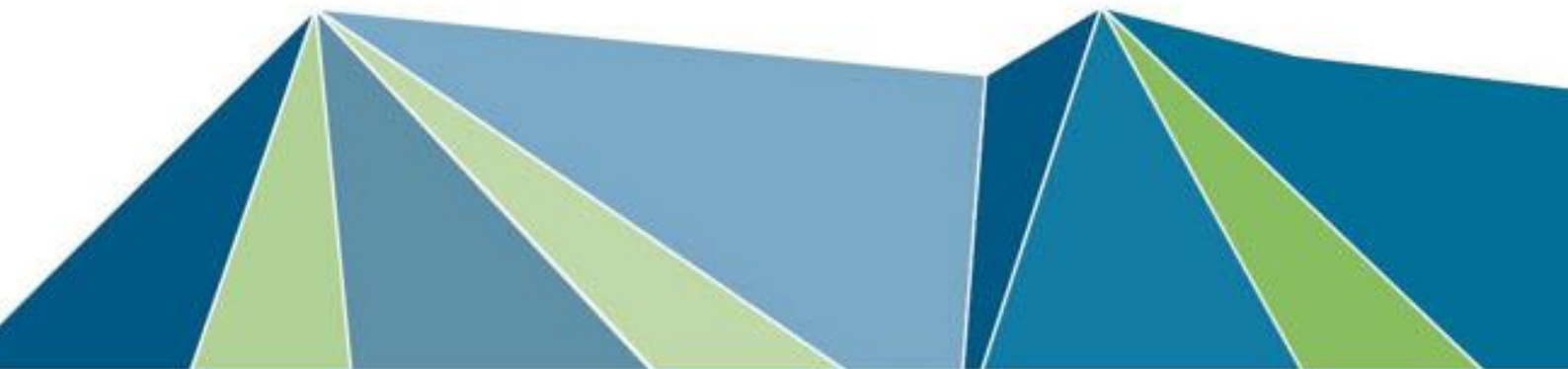
# Agenda

## ***Local Traffic Committee Meeting*** **11 December 2024**

A Local Traffic Committee Meeting will be held in the Ballina Shire Committee Room, 40 Cherry Street, Ballina on **11 December 2024 commencing at 10:00 am.**

1. Attendance & Apologies
2. Minutes of Previous Meeting
3. Deputations by Members of Public or Councillors
4. Summary Report – Recent Decisions of Council in Response to LTC Recommendations
5. Items to be Referred to Council
6. Items to be Referred to the General Manager's Delegate
7. Items for Traffic Engineering Advice
8. Information of the Committee
9. Regulatory Matters on Classified Roads (GM's Delegate)
10. Items Without Notice
11. Next Meeting

John Truman  
**Director**  
**Civil Services Division**



## Table of Contents

1.	Attendance & Apologies .....	3
2.	Minutes of Previous Meeting.....	3
3.	Deputations by Members of Public or Councillors.....	3
4.	Summary Report - Recent Decisions of Council in Response to LTC Recommendations.....	4
5.	Items to be Referred to Council .....	5
5.1	Draft Ballina District Hospital, Surrounding Streets Parking Plan - Results from Community Consultation	5
6.	Items Referred to General Manager's Delegate .....	15
6.1	Proposed Parking Configuration, Tamar Street Ballina, Cherry Street to Martin Street	15
6.2	Proposed Accessible Parking Spaces – Ballina Surf Club Precinct	19
7.	Items for Traffic Engineering Advice .....	21
7.1	Proposed Accessible Park, Lions Park, Rutherford St, Lennox Head	21
8.	Information for the Committee .....	23
8.1	Schedule of Outstanding Resolutions of the Committee	23
9.	Regulatory Matters on Classified Roads (GM's Delegate) .....	29
10.	Items Without Notice.....	30
11.	Next Meeting .....	30

**DISCLAIMER ©NSW Spatial Services 2024. Although all care is taken in the preparation of plans within Council's business paper (both agendas and attachments), Ballina Shire Council accepts no responsibility for any misprints, error, omissions or inaccuracies. The information contained within each plan is for pictorial representation only and not to scale. Accurate measurements should be undertaken by survey.**

1. Attendance & Apologies
  2. Minutes of Previous Meeting
  3. Deputations by Members of Public or Councillors
- 

**1. Attendance & Apologies**

**2. Minutes of Previous Meeting**

A copy of the Minutes of the Local Traffic Committee Meeting held on Wednesday 9 October 2024 were distributed with the business paper.

**RECOMMENDATION**

That the Committee confirms the Minutes of the Local Traffic Committee Meeting held on Wednesday 9 October 2024.

**3. Deputations by Members of Public or Councillors**

4. Summary Report - Recent Decisions

---

4. **Summary Report - Recent Decisions of Council in Response to LTC Recommendations**

Nil Items

## 5.1 **Draft Ballina District Hospital, Surrounding Streets Parking Plan - Results from Community Consultation**

---

### 5. **Items to be Referred to Council**

#### 5.1 **Draft Ballina District Hospital, Surrounding Streets Parking Plan - Results from Community Consultation**

---

### **Introduction**

In December 2023, the Committee requested a review of parking on the streets surrounding the Ballina Hospital with a view to formulating a Master Plan for the precinct. A draft parking plan was developed. Community consultation was completed on 22 November 2024 and the results are reported here.

### **Information**

Following requests over a number of years from various health and allied health providers in the Ballina Hospital precinct for piecemeal timed parking regulation, the Committee made the following recommendation:

*“3. That Ballina Shire Council conduct a review of parking on streets surrounding the hospital including both sides of Fox and Cherry Streets, and the hospital side of Moon and Bentinck Streets, with a view to formulating a Master Plan for the precinct.”*

Following preliminary discussions with Ballina Hospital management, St Andrews aged care facility and bus operators, a draft street parking master plan was developed in August.

Buslines bus service has indicated that they operate 34 services a day, Monday to Friday 7am to 7pm, and 11 services on Saturday 7.45am to 7.45pm (route services 661, 668 and 669). CDC/Blanchs indicated that they do not currently run services around the Hospital but will be conducting a route review this year and may use bus zones in the future.

In summary the draft plan delivers 2 designated bus zones, 12 x ‘2 Hour’ parking spaces for short-term visitation, and a net increase of 27 parking spaces in the precinct achieved by linemarking and conversion of parking spaces in Moon and Fox Streets to 90 degrees, increasing parking efficiency. A copy of the draft plan is attached.

Key features of the parking master plan include:

1. Provision of bus stops in Cherry Street
  - Proposed designated bus stops for both northbound and southbound buses in Cherry Street, as close as practicable to the main hospital entrance. Locations of the bus zones are constrained by the need to accommodate standard bus vehicle lengths, the need to avoid crossing driveways, and the need to be on the departure

## 5.1 Draft Ballina District Hospital, Surrounding Streets Parking Plan - Results from Community Consultation

---

- side of the existing pedestrian refuge in front of the hospital for safety.
- The proposed bus zones would result in the loss of 16 car parks in Cherry Street. This loss will be compensated by providing additional spaces in Fox and Moon Streets.
  - Possible time-restricted operation of the bus zones to business hours or similar (to free up zones for private vehicle parking at other times).
2. Provision of a limited number of timed parking spaces adjacent to the Hospital Main Entrance in Cherry Street and St Andrews Main Entrance in Bentinck Street
- There are currently no short-term timed parking spaces near the hospital or St Andrews to cater for short term visitation and many spaces tend to be parked out all day.
  - The proposed provision of 6 x '2 Hour' parking spaces on the western side of Cherry Street (near the hospital main entrance) and 6 x '2 Hour' parking spaces on the northern side of Bentinck Street (St Andrew's main entrance) will deliver short-term/high turnover spaces.
3. Linemark and convert parking spaces in Moon and Fox Streets to 90 degrees to increase the number of parking spaces in the precinct
- To compensate for the loss of parking spaces in Cherry Street, it is proposed to mark and create 90 degree parking spaces on the east side of Moon Street (hospital side), and both sides of Fox Street. This will increase parking supply by an estimated 43 spaces as 90 degree parking consumes less kerb space per vehicle than a 60 degree layout.
  - It is proposed to retain the existing 60 degree parking spaces in Bentinck and Cherry Streets as they are already linemarked and volumes of traffic in these streets is quite high. Parking movements are easier and there is less interruption to through traffic with 60 degree parking compared to 90 degree parking.
  - The west side of Moon Street has not been included as the shoulders are not sealed.

Council sought feedback from residents and service providers in the area on the different features of the draft plan.

### Results of Community Consultation

Community consultation was undertaken with distribution of the draft plan to:

- Ballina Hospital and St Andrews executive officers
- A3 posters with QR code for distribution to staff of the hospital and St Andrews
- CDC/Blanchs and Buslines bus services
- All neighbouring residents on Cherry, Fox and Moon Streets
- Unit block property owners of No 73 Cherry Street
- Commercial operators adjacent the Hospital (Cherry Street Bowls Club and La Romana Café)
- Emergency services, taxi operators and community transport
- Inclusion of the draft plan on the Ballina Shire Council 'Have Your Say' page open to broader community input
- Access Reference Group

## 5.1 Draft Ballina District Hospital, Surrounding Streets Parking Plan - Results from Community Consultation

---

The draft plan was open to community consultation for three weeks (1 to 22 November 2024). The 'Have Your Say' page received 98 visits, with 41 people downloading documents relating to the draft parking plan.

A total of 10 surveys were completed and returned, plus two free-form responses. Feedback is summarised below. Responses were received from 9 hospital precinct workers, 1 transport provider and 2 residents. No responses were received from visitors to the Hospital, allied health services or from St Andrews.

A summary of responses is outlined below. For more detail on issues raised through community consultation along with staff responses, refer to the table following the summary.

### Summary

#### Provision of Bus Stops on Cherry Street

- All respondents supported the provision of bus stops close to the hospital

#### Provision of a limited number of timed parking spaces adjacent to the Hospital Main Entrance in Cherry Street and St Andrews Main Entrance in Bentinck Street

- Cherry Street timed parking - 7 respondents supported the proposed timed parking and 3 did not, the latter citing difficulty for staff parking, fines, and security/lighting issues
- Bentinck Street timed parking – 6 respondents supported the proposed timed parking and 4 did not, the latter citing difficulty for workers, disadvantages to older visitors, with some suggesting there is no demand for timed-parking

#### Additional timed-parking

- 8 respondents did not support any additional timed-parking.
- 2 respondents supported additional 2-hour timed-parking for the Rehabilitation Unit and/or Community Health on Fox Street.
- Follow-up telephone discussion with the Rehabilitation Unit elicited a request for three '2-hour' timed-parking to support the visitors and patients of the Outpatient Clinic with its entry on Fox Street. The entry currently has two accessible parking spaces which were recently upgraded to meet compliance.
- There are currently 7 '2-hour' parking spaces on Fox Street near the entry to Community Health. Follow-up telephone discussion with Community Health indicated that they were satisfied with the existing supply of timed parking, but felt that increased compliance would assist.

#### Linemark and convert parking spaces in Moon and Fox Streets to 90 degrees to increase the number of parking spaces in the precinct

- 10 respondents supported 90 degree parking in Moon and Fox Streets
- Some respondents expressed concerns about safety and congestion with 90 degree parking

## 5.1 Draft Ballina District Hospital, Surrounding Streets Parking Plan - Results from Community Consultation

### Street Lighting

- A review of street lighting around the Hospital precinct was requested by police at the August 2024 LTC meeting.
- A number of survey respondents also suggested that street lighting around the precinct should be improved for security.
- Design engineers conducted a desk-top review of the existing street lighting and concluded that the precinct would not meet the current standards for a P3 category of lighting.
- This would ultimately require formal assessment by a lighting consultant (approx \$3-\$5000) for the whole block, then certification by Essential Energy. There would also be additional costs for design and implementation. Assessment and design could take approximately 6 to 12 months and cost around \$10,000.
- As street lighting is outside the scope of this master plan, it has been referred to Council's street lighting program as a strategic action.

<b>Response Summary Table</b>		
<b>Issue</b>	<b>Staff Response</b>	<b>Action</b>
Bus Zones on Cherry Street will make it harder for staff to find parking, especially for long 8 hour shifts	Loss of car parking on Cherry Street will be compensated by linemarking and conversion of parking spaces to 90 degrees in Moon and Fox Streets.	Nil action
The proposed bus zone on the eastern side of Cherry Street (near No 73 Cherry Street) may obstruct driveway access	Buses will only be using the zones for short, temporary drop-off and pick-up and property access will not be obstructed.	Nil action
There is no demand from patients for bus services to and from the hospital	This response does not take into consideration visitor demand. Provision of improved public transport facilities aims to reduce reliance on private transport. Bus zones will also support community transport buses.	Bus services to and from hospital to be promoted to encourage use of public transport in precinct
There is a need for more bus services in the area	Supply of bus services is determined by bus service providers.	Referred to bus service providers
Speeding vehicles on Cherry Street will impede the operation of bus zones and buses	There is no evidence in traffic counts of significant speeding. Speed review was also conducted by Transport for NSW in 2023 with change of posted speed limit declined. Formalised bus zones will improve safety for other drivers and passengers using bus services.	Nil action
'2 hour' timed parking will lead to loss of parking for staff	Long term parking will still be available around the precinct. The proposed 90 degree parking in Fox and Moon Streets will increase the availability of longer term parking.	Nil action



**5.1 Draft Ballina District Hospital, Surrounding Streets Parking Plan - Results from Community Consultation**

<b>Response Summary Table</b>		
<b>Issue</b>	<b>Staff Response</b>	<b>Action</b>
'2 Hour' timed parking will create a security issue for staff who have to walk further at odd hours	Security issues referred to Hospital for response. Desk-top review of street lighting in immediate precinct complete.	Referred to Street Lighting Program as a strategic action
No-one will comply with the timed parking leading to fines for staff	Adjustment period to be implemented in liaison with Rangers.	To be discussed with Parking Rangers
Short-term timed parking with create disadvantage for older or frail visitors who need longer parking times and closer access	Long term parking will still be available around the precinct.	Nil action
There is no need for any timed parking on Cherry or Bentinck Streets	Timed parking is intended to improve equity and access for short term visitors to the hospital and St Andrews community facilities.	Nil action
Timed parking should only be implemented in Cherry Street for the Hospital and not in Bentinck Street	The short term parking on Bentinck is intended to facilitate equity and access to St Andrews.	Nil action
The proposed timed parking on Bentinck would be better relocated on Moon Street to give priority to staff doing 8-hour shifts.	The proposed timed parking on Bentinck is designed to support short-term visitors to St Andrews during prime business hours.	Nil action
The proposed timed parking on Bentinck Street will disadvantage older visitors with mobility issues	Longer term parking is available on Bentinck and Moon Streets. The short-term parking will provide increased equity of access.	Nil action
The proposed timed parking on Bentinck Street will disadvantage people attending Cherry Street Bowls Club	There is extensive untimed parking on Bentinck, Cherry and Moon Streets to accommodate patrons of Cherry Street Bowls Club. No access issues were raised during consultation by the Bowls Club.	Nil action
The proposed timed parking on Bentinck Street should be relocated to Moon Street	The timed parking has been proposed for Bentinck Street to better meet the equity and access needs of short term visitors during prime visiting times. Relocating the short term parking to Moon Street would disadvantage short term visitors with reduced mobility.	Nil action
The primary demand from staff and visitors is for long term parking during the day. Parking around the precinct is	The draft plan proposes a total of 12 short-term parks to meet the needs of short-term visitors and to improve equity of access.	Nil action

**5.1 Draft Ballina District Hospital, Surrounding Streets Parking Plan - Results from Community Consultation**

<b>Response Summary Table</b>		
<b>Issue</b>	<b>Staff Response</b>	<b>Action</b>
most difficult from the commencement of the afternoon shift at 1.30pm up to 10pm, with most visitors arriving around 10am and occupying parking until 4pm	Most of the parking around the Hospital precinct is untimed, but it is naturally limited. There is competition for long-term parking amongst staff and visitors. Inevitably, people will have to 'park and walk' as with all centres with high employment and high service provision. The proposal for 12 additional timed parking spaces aims to improve equity and convenience recognising diversity of needs.	
There should be additional timed parking in Fox Street outside the Rehabilitation Unit	Telephone follow-up with the Rehabilitation Unit indicates some demand for short-term patient and visitor parking at the Fox Street entry to Rehab.	Draft parking plan amended and attached
There should be additional timed parking in Fox Street outside Community Health	There is already 7 x '2 Hour' parking spaces close to the entry to Community Health. Telephone follow-up with Community Health suggests the main issue is non-compliance.	To be referred to Rangers for compliance
Dedicated pram parking should be installed outside Community Health for young parents/carers with midwife appointments	This type of identified or dedicated parking is not recognised or accommodated on public roads under Australian Standards. Existing 2-hour timed parking should accommodate short-term parking needs of parents/carers near Community Health.	Nil action
90 degree parking in Moon Street will slow down parking and lead to congestion and risk of crashes. 45 degree parking on Moon Street would be preferred.	AS2890.5.2020 prescribes permissible parking configurations for roads of varying traffic volume. 90 degree parking in Moon Street conforms with Australian Standards width and is therefore suitable in this location.	Nil action. Retain 90 degree parking on Fox and Moon Streets
90 degree parking on Fox and Moon Streets will be too close to the roundabouts and this will create crash risk	Linemarking and 90 degree parking will be implemented in compliance with the Australian Standards and will not create a crash risk near roundabouts.	Nil action
Request to retain the tree on the north-eastern corner of Fox Street and Moon Street as this performs an important environmental and wildlife function and should not be	There is no intent in the draft plan to remove vegetation for the purpose of 90 degree parking.	Nil action

**5.1 Draft Ballina District Hospital, Surrounding Streets Parking Plan - Results from Community Consultation**

<b>Response Summary Table</b>		
<b>Issue</b>	<b>Staff Response</b>	<b>Action</b>
removed to accommodate additional parking		
Provide internal parking near the Emergency Parking for caravans, large utes, mobility scooters, e-bikes, wheelchair accessible parking, and allow for doctors, pathology, emergency drop-off for fractures/ unresponsive patients, heart patients and patients with breathing difficulties	Request relates to internal parking on the hospital site and referred to the Hospital executive for consideration and response.	Referred to executive of Hospital
Upgrade of Refuge to Pedestrian Crossing, Cherry Street	The option of a pedestrian crossing was scoped in an early draft of the parking plan, but would require the removal of 7 additional car spaces on Cherry Street (5 on the west side and 2 on the east side) and would require installation of compliant pedestrian street lighting. This proposal is outside the scope of the current parking plan and has been registered to the Pedestrian Access and Mobility Plan (PAMP) for assessment when the PAMP is next reviewed.	Registered with PAMP
Include an additional accessible park within the proposed '2 Hour' parking on Bentinck Street, outside St Andrews	There are 8 accessible parking spaces around the hospital block, plus additional accessible spots at the entry to St Andrews and with the hospital grounds. No additional accessible parks are considered needed at this stage.	Nil action

Validity of Survey Results

The low response rate (12 respondents from total staff and neighbourhood population) raises concerns about the representativity of the results.

The community consultation on the proposed plan was targeted to neighbours, neighbouring businesses, health service providers in the precinct and public transport providers. The general response rate was low, and no responses were received from visitors to the Hospital precinct.

Subsequently, it could be viewed that the results are biased in favour of health and transport service operators in the precinct. It is therefore difficult to gauge if there is a substantial difference between targeted respondents and the way non-respondents may have answered.

## 5.1 Draft Ballina District Hospital, Surrounding Streets Parking Plan - Results from Community Consultation

---

The results are, however, considered broadly representative in this instance for a number of reasons. Firstly, survey tools (which rely on self-completion) always deliver the lowest response rates. Secondly, often the only people who register an opinion are people who disagree with proposed changes. Lastly, the 'Have Your Say' page promoted on the Ballina Council website exposed the draft plan and consultation to broader community feedback.

### Next Steps

If supported by the Committee, next steps would likely include:

- Preparation of cost estimates
- Provision for implementation in a future Council budget

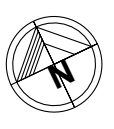
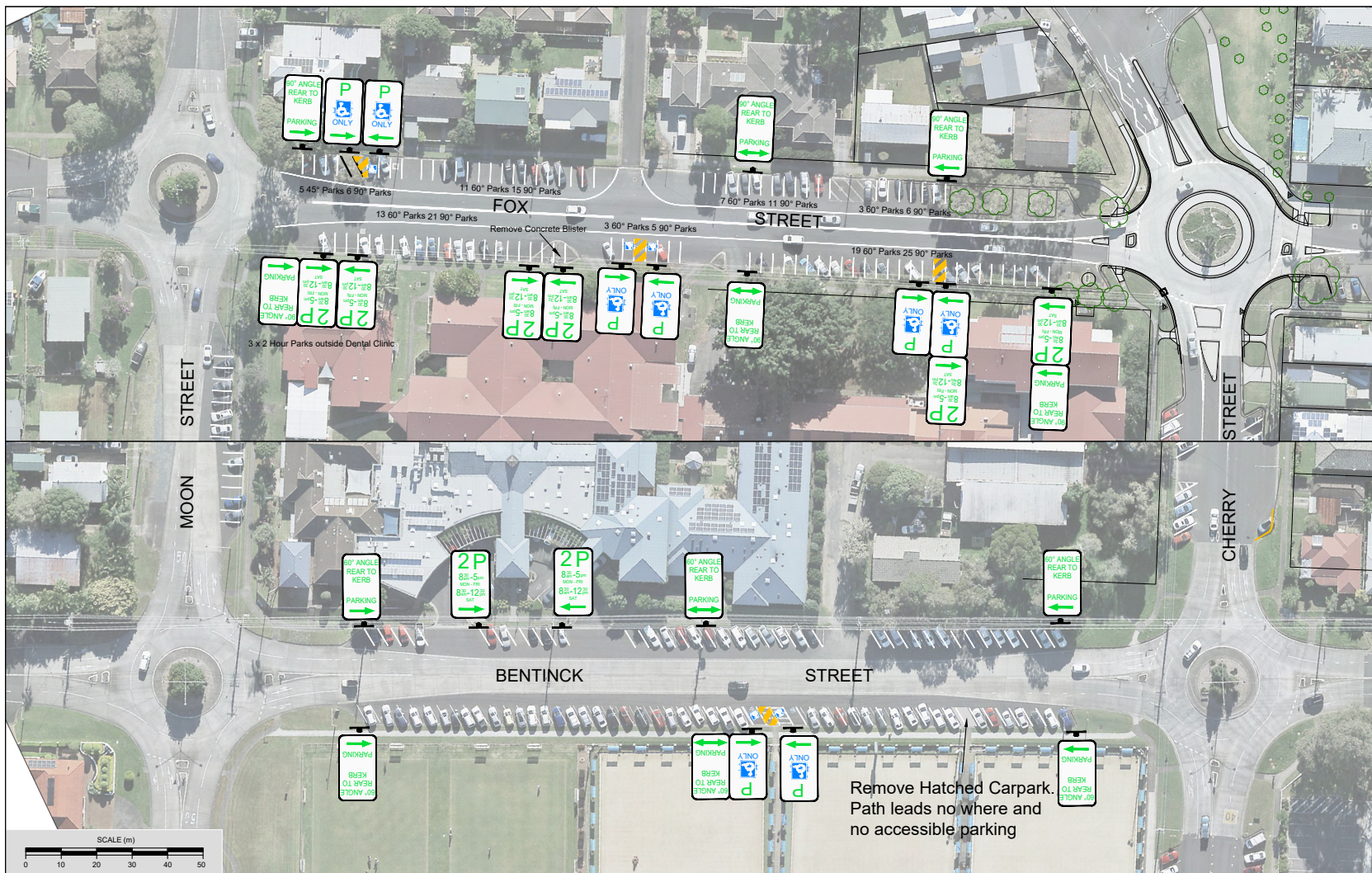
### **RECOMMENDATIONS**

1. That the Committee support the proposed parking arrangements and associated regulatory signage and linemarking as detailed on the attachment.
2. That the Committee support preparation of a formal report to Council regarding implementation of the proposal.

### **Attachment(s)**

1. Ballina Hospital Parking Concept Layout Fox and Bentinck Sts [↓](#)
2. Ballina Hospital Parking Concept Layout Cherry and Moon Sts [↓](#)

5.1 Draft Ballina District Hospital, Surrounding Streets Parking Plan - Results from Community Consultation



**NOTE:**  
 Changes to the parking in Fox St. and Moon St, by adopting 90 degree angle parking, increases the formalised parking numbers by 43 spaces. Due to the proposed Bus Zones located in Cherry St, 16 existing parking spaces will be lost. This results in a net gain of 27 parking spaces.

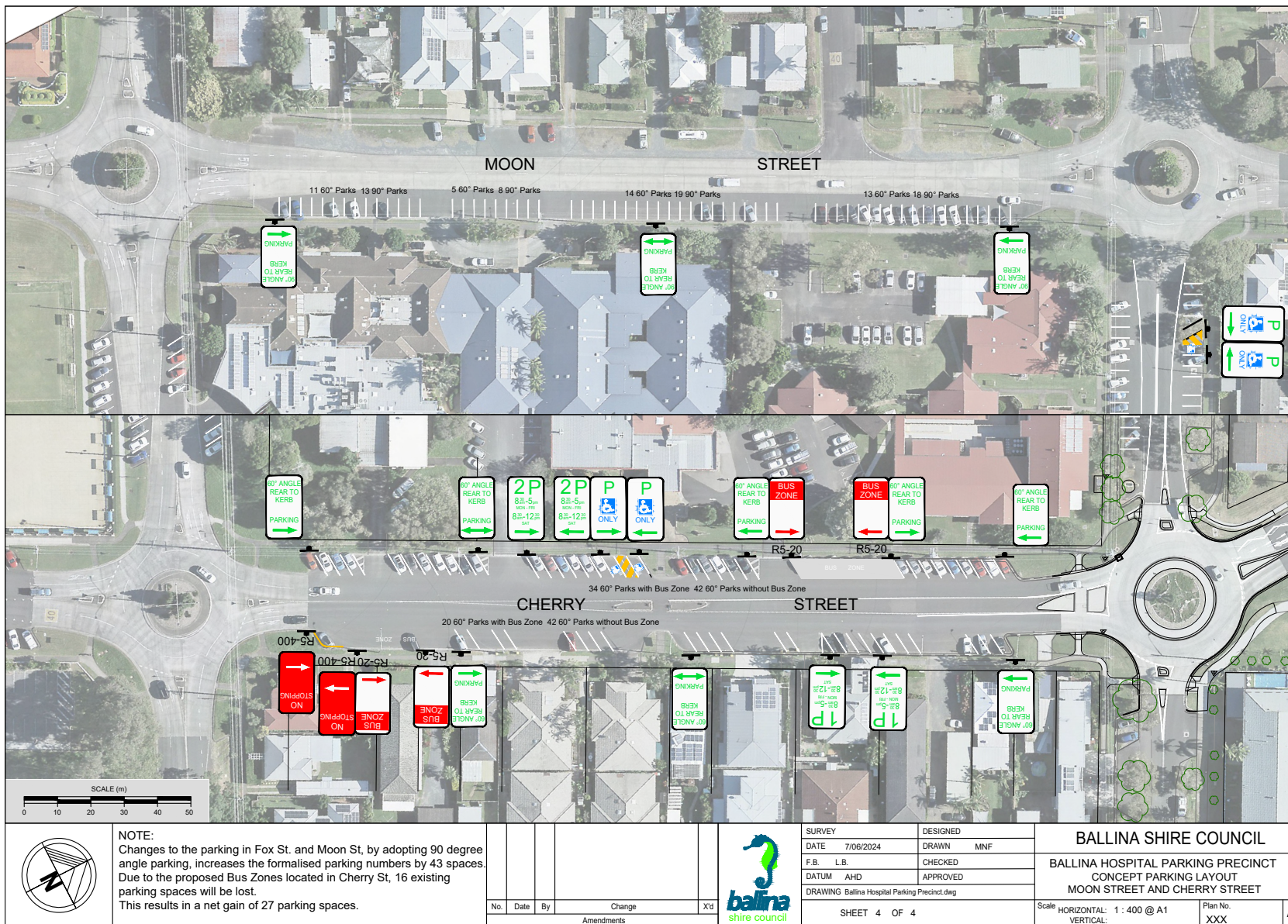
No.	Date	By	Change	X'd
Amendments				



SURVEY		DESIGNED	
DATE	7/06/2024	DRAWN	MINF
F.B.	L.B.	CHECKED	
DATUM	AHD	APPROVED	
DRAWING: Ballina Hospital Parking Precinct.dwg			
SHEET 3 OF 4			

<b>BALLINA SHIRE COUNCIL</b>	
BALLINA HOSPITAL PARKING PRECINCT CONCEPT PARKING LAYOUT FOX STREET AND BENTINCK STREET	
Scale HORIZONTAL: 1 : 400 @ A1	Plan No. XXX
VERTICAL:	A1

# 5.1 Draft Ballina District Hospital, Surrounding Streets Parking Plan - Results from Community Consultation



**6.1 Proposed Parking Configuration, Tamar Street Ballina, Cherry Street to Martin Street**

---

**6. Items Referred to General Manager's Delegate**

**6.1 Proposed Parking Configuration, Tamar Street Ballina, Cherry Street to Martin Street**

---

**Introduction**

Following Council consideration of the Ballina CBD Parking Study, the Committee's support is requested for linemarking of parking spaces in Tamar Street, Ballina between Cherry Street and Martin Street and associated authorisation of 60 degree, rear to kerb, angle parking.

**Information**

At the meeting held 22 February 2024 to consider recommendations from the Ballina CBD Parking Study and associated public submissions, Council in part resolved:

- “1. That based on the submissions outlined in this report Council take no action on implementation of the study recommendation for proposed time parking zone changes.
2. ....
3. That subject to funding in future budgets, Council approves within the study area, the proposed line marking of unmarked parking spaces in River Street and Tamar Street.”

Implementation of Part 3 of the Council resolution is being progressively staged.

- At the 26 June 2024 meeting, the Committee supported a parking signage and linemarking proposal to implement the Council resolution for the section of Tamar Street between Kerr Street and Grant Street.
- At the 9 October 2024 meeting, the Committee supported a parking signage and linemarking proposal to implement the Council resolution for the section of Tamar Street between Moon Street and Cherry Street as part of the proposed Tamar Street 40km/h High Pedestrian Activity Area and bus shelter redevelopment.
- This report seeks the Committee's support for a parking signage and linemarking proposal to implement the Council resolution for the section of Tamar Street between Cherry Street and Martin Street. This proposal also implements a change from 45 to 60 degree parking to be consistent with the previous Committee decisions on 26 June and 9 October 2024.

Below is an aerial photo of current parking arrangements in Tamar Street between Cherry Street and Martin Street.

## 6.1 Proposed Parking Configuration, Tamar Street Ballina, Cherry Street to Martin Street

---



### Tamar Street Aerial View (2022)

The parking in this section of Tamar Street is mostly not line marked and current configuration includes:

- South Side - 2P, Rear to Kerb, 45 Degree Angle Parking 8:30 am – 5pm Mon-Fri, 8:30 am – 12:30 pm Sat.
- North side, as above for western end, Cherry Street to No. 51
- North side eastern end, No.30 (School frontage) to Martin Street, as above, but no time restriction
- Accessible parking spaces south side at Cherry Street end and adjacent to 46 Tamar Street
- Ambulance bay adjacent to 46 Tamar Street

The proposed parking and regulatory signage and markings arrangements shown on the attachment to this report:

- Retain, do not change existing time restrictions
- Retain the existing accessible parking spaces on the south side and provide an additional accessible space on the north side (adjacent to 53 Tamar Street following a request from the business)
- Change angle parking from 45 to 60 degrees, to be consistent with angle parking configuration approved by the Committee for other sections of Tamar Street
- Retain the ambulance bay, but signage is changed to “P Ambulance Only”
- Provide No Stopping yellow lines at intersections



## 6.1 Proposed Parking Configuration, Tamar Street Ballina, Cherry Street to Martin Street

---

### RECOMMENDATIONS

That the Committee support the proposed 60 degree rear to kerb parking zones, disability parking spaces, ambulance parking, time parking restrictions and associated regulatory signs and markings on Tamar Street, Ballina between Cherry Street and Martin Street as depicted on the attachment to this report.

### Attachment(s)

1. Proposed Parking and Regulatory Signs/Markings, Tamar St Ballina, Cherry to Martin Sts [↓](#)



## **6.2 Proposed Accessible Parking Spaces – Ballina Surf Club Precinct**

---

## **6.2 Proposed Accessible Parking Spaces – Ballina Surf Club Precinct**

---

### **Introduction**

Council resolution of 28 November 2024 seeks costs and options to provide a shelter for two additional accessible parking spaces near the Ballina Surf Club.

### **Information**

Council resolution of 28 November 2024 seeks costs and options to provide a shelter for two additional accessible parking spaces in the parking area south of Compton Drive near the Ballina Surf Club.

Implementation would require the support of the Committee for the two additional accessible parking spaces and an associated shared area as required by Australian Standard AS 2890.5.

Below are aerial views showing the location of the current accessible car parking spaces shelter south of Compton Drive, East Ballina. The two existing accessible car parking spaces and associated shared area are underneath the shelter footprint.



## 6.2 Proposed Accessible Parking Spaces – Ballina Surf Club Precinct

---



It is proposed to provide the additional accessible car parking spaces and associated shared area to the immediate west of the current spaces and shelter.

### **RECOMMENDATIONS**

That the Committee support provision of two accessible parking spaces, shared area and associated regulatory signage and markings, compliant with AS 2890.5, to the immediate west of the current spaces in the car parking area south of Compton Drive, East Ballina west of the Ballina Surf Club.

### **Attachment(s)**

Nil

## **7.1 Proposed Accessible Park, Lions Park, Rutherford St, Lennox Head**

---

### **7. Items for Traffic Engineering Advice**

#### **7.1 Proposed Accessible Park, Lions Park, Rutherford St, Lennox Head**

---

##### **Introduction**

Council has received requests for an accessible parking space to be located at Lions Park, Rutherford Street (Boat Channel), Lennox Head.

##### **Information**

Parking at Rutherford Street is currently not formalised and does not include accessible parking. The area is popular with locals and visitors for beach, boat and playground access, with walking and cycling tracks connecting Lennox CBD to Pat Morton Lookout.

There is significant demand for additional accessible parks in Ballina Shire. In 2021 6.7% of the population of the Shire reported needing help in day-to-day lives with disability. There are 2,720 mobility parking permits issued for Ballina Shire.

It should be noted that a Concept Masterplan is being prepared for the Rutherford Street Carpark. The Masterplan will formalise carparking (including overflow parking for Lennox CBD), boat and trailer access and parking, and improved pedestrian and cycling access. Accessible parking will be included in the finalised Plan. Options and designs are still being developed, and it is likely that the Concept plans will be finalised and implemented in 2025-26.

As the Rutherford Street Concept Plan will take some time to finalise, it is recommended that an accessible carpark be implemented at Lions Park as an interim response.

##### **RECOMMENDATIONS**

That the Committee provide traffic engineering advice and/or support for the provision of 1 accessible parking space at Lions Park, Rutherford Street as an interim measure while the Concept Masterplan for Rutherford Street is being developed.

##### **Attachment(s)**

1. Lions Park Accessible Parking Space [↓](#)

7.1 Proposed Accessible Park, Lions Park, Rutherford St, Lennox Head



Ballina Shire Council © Spatial Services 2024

	<table border="1"> <tr> <th>No.</th> <th>Date</th> <th>By</th> <th>Change</th> <th>X'd</th> </tr> <tr> <td colspan="5">Amendments</td> </tr> </table>	No.	Date	By	Change	X'd	Amendments						<table border="1"> <tr> <td>SURVEY</td> <td>DESIGNED</td> </tr> <tr> <td>DATE 10/2024</td> <td>DRAWN MNF</td> </tr> <tr> <td>F.B. LB.</td> <td>CHECKED</td> </tr> <tr> <td>DATUM AHD</td> <td>APPROVED</td> </tr> </table>	SURVEY	DESIGNED	DATE 10/2024	DRAWN MNF	F.B. LB.	CHECKED	DATUM AHD	APPROVED	<b>BALLINA SHIRE COUNCIL</b>	
		No.	Date	By	Change	X'd																	
Amendments																							
SURVEY	DESIGNED																						
DATE 10/2024	DRAWN MNF																						
F.B. LB.	CHECKED																						
DATUM AHD	APPROVED																						
			PROPOSED ACCESSIBLE PARK ACCESSIBLE PARKING LIONS PARK LENNOX HEAD																				
			SHEET 1 OF 1	Scale HORIZONTAL: 1 : 50 @ A1 VERTICAL:	Plan No. A1																		

## **8.1 Schedule of Outstanding Resolutions of the Committee**

---

### **8. Information for the Committee**

#### **8.1 Schedule of Outstanding Resolutions of the Committee**

---

##### **Introduction**

List of outstanding resolutions from previous meetings of the Local Traffic Committee.

##### **Information**

##### **Meeting Held 9 October 2024**

##### **10/24-6.1 Bus Zone Times – Byron Street, Lennox Head Adjacent to Public School**

###### *Recommendations*

That the Committee support extending the bus zone times in Byron Street, Lennox Head adjacent to the Public School, to commence at 7am (currently 8am).

###### Action to Date

Works Section plan installation early 2025.

##### **10/24-6.2 Proposed Time Restricted Parking - River Street, West Ballina**

###### *Recommendations*

That the Committee support provision of 1H parking 9am to 4pm Monday to Friday on the westbound side of River Street, West Ballina, to extend between Riverview Street intersection and the common boundary of number 450 and 462 River Street and as depicted in the attachment to this report.

###### Action to Date

Works Section plan installation early 2025.

##### **10/24-8.1 Schedule of Outstanding Resolutions of the Committee**

##### **Out of Session Application No OS 8/24-1, Proposed 60 Degree Rear to Kerb Angle Parking and other Traffic Matters, Tamar Street Ballina between Cherry and Moon Streets**

###### *Recommendations*

That the Committee support Application No OS 8/24-1, Proposed 60 Degree Rear to Kerb Angle Parking and other Traffic Matters, Tamar Street Ballina between Cherry and Moon Streets as shown on plan SR20.014\_5a SHEET V3 (4.3) FOR LTC AUG24.pdf and as modified by designer in accordance with Transport for NSW Delegate's suggestions detailed in this report.

###### Action to Date

Works Section plan installation early 2025.

## 8.1 Schedule of Outstanding Resolutions of the Committee

---

### Meeting Held 14 August 2024

#### **08/24-6.1 Proposed Roundabout Wardell Road/Daley Street, Alstonville**

##### *Recommendations*

That the Committee support the proposed roundabout and associated regulatory signs and markings as depicted on the attachment to this report.

##### Action to Date

Works Section plan installation 2025.

#### **08/24-6.2 Proposed Roundabout, Byron Bay Road/Byron Street Lennox Head**

##### *Recommendations*

1. The Committee support the regulatory signs and markings for the proposed Byron Bay Road/Byron Street roundabout as depicted on the attachment to this report.
2. Transport for NSW be requested to provide a speed zone review for the section of Byron Bay Road from Ross Lane to Hutley Drive, having regard to the provision of the proposed roundabout at Byron Bay Road/Byron Street, Lennox Head intersection.
3. Council to confirm if the design and proposal has been referred to Development North.

##### Action to Date

Roundabout works planned to start February 2025.

#### **08/24-7.1 Parking Controls Master Plan for Cherry, Fox, Moon, Bentinck Streets (Hospital) Precinct, Ballina**

##### *Recommendations*

1. A review be conducted of compliance of street lighting on Fox Street.
2. Consultation be undertaken with adjoining neighbours regarding proposed bus zones and changes to timed parking and linemarking of parking.
3. Councillor Bulletin regarding the Parking Controls MasterPlan be prepared.

##### Action to Date

1. Not commenced
2. See separate report in this meeting agenda
3. Completed

#### **08/24-8.1 Proposed 40km/h High Pedestrian Activity Area, Tamar Street (Cherry to Grant Streets)**

##### *Recommendations*

1. Notes the information and supports Council's written application to Transport for NSW seeking authorisation for amendment of speed zone and implementation of the proposed 40km/h High Pedestrian Activity Area.

##### Action to Date

1. Works and signage etc to be completed 2025.



**Meeting Held 26 June 2024**

**06/24-6.2 Proposed Wardell Community Green Space Project**

*Recommendations*

1. That the Committee support the proposed “shared zone” in principle and endorse lodgement of a formal application for approval to Transport for NSW.
2. That the Committee support the other proposed traffic facilities, wombat pedestrian crossing and all other associated regulatory signs and markings, as shown on the amended “Traffic Committee Proposed Works Revision B, 24 June” plan tabled at the meeting.

Action to Date

To be implemented with construction of proposed Wardell Community Green Space Project.

**06/24-6.3 Proposed Parking Configuration, Tamar Street Ballina, Kerr Street to Grant Street**

*Recommendations*

That the Committee note the resolutions of Council February 2024 regarding actions following on from consideration of the Ballina CBD Parking Study, being:

1. *That based on the submissions outlined in this report Council take no action on implementation of the study recommendation for proposed time parking zone changes.*
2. *That Council investigates opportunities for the use of technology to support efficient and effective implementation of Council’s parking enforcement program.*
3. *That subject to funding in future budgets, Council approves within the study area, the proposed line marking of unmarked parking spaces in River Street and Tamar Street.*
4. *That subject to funding in future budgets, Council progressively line mark, provide signage, shoulder seal and seek Local Traffic Committee support for formal angle parking (where the street is geometry suitable) in Crane Street and connecting streets to the Ballina CBD.*
5. *That Council investigate cost estimates for improving walkability and street lighting for pathways connecting the CBD to unrestricted parking areas in fringe residential streets for consideration in future budgets.*
6. *That as part of this report that parking in Tamar Street (between Cherry Street and Martin Street) be investigated to provide unrestricted parking*

Action to Date

3. Implementation for the section of Tamar Street between Kerr Street and Grant Street was approved by the June 2024 meeting of the Committee.

Section of Tamar Street between Cherry and Moon Street to be completed as part of extension of 40 kph High Pedestrian Area Scheme, and being considered by LTC Delegates as out of session matter.

Section of Tamar Street between Cherry Street and Martin Street subject of separate report in this agenda.

## 8.1 Schedule of Outstanding Resolutions of the Committee

---

6. Not supported by Chamber of Commerce and advice given in Councillor Bulletin to not further pursue this option.

### Meeting Held 13 December 2023

#### **12/23-6.1 Proposed 2H Parking Zone – Ballina Dental Clinic, Fox Street, Ballina**

##### *Recommendations*

1. Subject to provision of a detailed and compliant signs and pavement marking design, the Committee support provision of three linemarked, 2H timed parking spaces, east of the NSW Health Dental Clinic driveway on the south side of Fox Street, Ballina.
2. The 2H parking be operational Mondays – Fridays from 8am until 4.30pm.
3. ....

##### *Action to Date*

Will be incorporated into master plan of street parking in Cherry Street/Fox Street/Moon Street/Bentinck Street (Hospital) block.

### Meeting Held 12 April 2023

#### **04/23-6.4 Request for Accessible Car Park Space at Shaws Bay**

##### *Recommendations*

That, subject to detailed design in compliance with AS 2890.5, the Committee support provision of an accessible parking space and shared area on the road related area on Lot 5 Section 88 DP 758047 as generally shown on the attachment to this report.

##### *Action to Date*

Tasked to designers

### Meeting Held 14 December 2022

#### **12/22-7.1 Provision of Accessible Parking, Main Street, Alstonville**

##### *Recommendations*

That Council:

1. Check the possibility of disabled access parking in Main Street.
2. Investigate proposed disabled parking spaces in the rear carpark either side of the covered walkway.
3. Refer the matter to the Access Committee for further advice prior to resubmitting to the LTC.

##### *Action to Date*

1. & 2, Council designers are checking candidate spaces in Daley Street and in public carpark off Commercial Road.
3. Access Committee consulted, but no detailed advice provided.

##### *Meeting with Alstonville Chamber of Commerce*

The Road Safety Officer and Traffic Engineer met with representatives of Alstonville Chamber of Commerce on site 10 May 2023. The Chamber will further consider and advise Council of its preferred location for accessible

## 8.1 Schedule of Outstanding Resolutions of the Committee

---

parking. The Chamber will also provide advice on loading zone preferred locations and they requested more compliance action on timed parking. The Rangers have advised that due to staff/resource limitations, the 2H parking is difficult to provide compliance action (parked vehicles need to be monitored for 2 hours+), they advise that if timed parking was changed to 1H, compliance action is likely to be much more effective.

### **12/22-7.3 Traffic Issues Rifle Range Road, Wollongbar Village**

#### *Recommendations*

That Council:

1. Consider reconfiguration of the Plateau Drive Roundabout to inhibit high speed drive through on Rifle Range Road.
2. Conduct a behaviour campaign to deter speeding in Wollongbar.
3. Consider provision of centre line and edge line treatment including possible raised pavement markers to confine traffic and inhibit speeding.
4. Install traffic counters in Rifle Range Road to provide data for possible request to TfNSW for a speed zone review.
5. Provide Crash data to assist TfNSW in any speed zone review.

#### *Action to Date*

1. Referred to design section for consideration.
2. Facebook action taken by Road Safety Officer.
3. Additional centreline and edge linemarking to be done when contractors in the area.
4. Traffic count completed 100m east of Midway Ave, 19 January 2023 (see attachment). 85% speed 61.38 kph, median speed 56.62 kph, daily volume 3,136 vpd.
5. Crash data has already provided in report to Committee Delegates.

### **Meeting Held 13 April 2022**

### **4/22-7.2 Four Way Cross Intersections – Ballina Island**

#### *Recommendations*

The Committee recommended that:

1. Council investigate an option for a centre median in Fox Street.
2. Council consider a road safety message or campaign around give way risks on Ballina Island.

#### *Action to Date*

1. Comms team given draft for Community Connect or online Fact Sheet.
2. Design completed Fox Street/Martin Street intersection and will be implemented in 2024/25.

### **Meeting Held 9 December 2020**

### **12/20-7.2 Disability Parking – Ballina CBD Central Block**

#### *Recommendation*

The Committee approves creation of two additional disability car parking spaces in the Ballina CBD Central Block – one each on both east and west bound lanes.

#### *Action to Date*

Design commenced.

**12/20-7.3 Shaws Bay Parking – East of Hill Street, East Ballina**

*Recommendation*

The Committee approves creation of 4P area parking on both eastern and western sides of Hill Street, in Hill Street, Brighton Street, Park Street, The Serpentine and surrounding grassed areas of Shaws Bay recreation area.

Action to Date

Installation not commenced, pending further public consultation.

**Meeting Held 12 August 2020**

**8/20-6.4 Proposed Additional Disabled Parking Space - Off Isabella Drive, Skennars Head**

*Committee Recommendation*

That subject to funding arrangements being provided to the satisfaction of Council, the Committee support provision of an additional disabled car parking space adjacent to the existing disabled car parking space in front of Holy Family School in the road related area off Isabella Drive, Skennars Head.

Action to Date

Awaiting response from school.

**Meeting Held 12 June 2019**

**2/19-6.5 St Francis Xavier Catholic Primary School, Proposed Student Drop Off / Pick Up Zone - Martin Street, Ballina**

*Recommendation*

1. The Committee support a NO PARKING (8–9.30am and 2.30–4pm School Days) student drop off/pick up zone in Martin Street, Ballina adjacent to St Francis Xavier Catholic Primary School as depicted on the attachment to this report.
2. Implementation of the zone to be deferred pending provision of funding by the school for necessary road shoulder pavement and sealing works, provision and erection of associated signage.

Action to Date

Implementation deferred pending funding and completion of associated construction works.

**RECOMMENDATIONS**

That the Committee note the information in the report regarding the Schedule of Outstanding Resolutions.

**Attachment(s)**

Nil

9. Regulatory Matters on Classified Roads

---

**9. Regulatory Matters on Classified Roads (GM's Delegate)**

Nil Items

- 10 Items Without Notice
  - 11 Next Meeting
- 

**10. Items Without Notice**

**11. Next Meeting**

Next meeting is scheduled for Wednesday 12 February 2025 at 10.00am.