

River Street Duplication

Stage 1

Burns Point Ferry Road to Barlows Road, West Ballina

ballina
shire council



River Street Duplication

Welcome (Tracy Lister):

- Invitation sent to residents, businesses, transport operators and members of the Local Emergency Management Committee to discuss the phasing of Stage 1: River Street Duplication
- What to expect from today
 - Purpose and overall staging of the project
 - Stage 1 construction phases from Riverbend to Barlows Road
 - What construction will look like
 - Potential impacts to residents and businesses during construction and how these will be addressed
 - Meet key contacts
 - Respond to any questions
- Future communications

River Street Duplication

Project Purpose (Paul Busmanis):

- Support a growing community and address road congestion
- Deliver dual-lane access along River Street from Pacific Hwy, West Ballina into Kerr Street, Ballina
- River Street carries largest volume of traffic in and out of Ballina
- Traffic flow recorded in 2019 was 26,100 vehicles/day.
- Traffic modelling predicts traffic flow in 2036 to be 29,500 vehicles/day
- Two-lane arterial road capacity = 18,000 vehicles/day
- Four-lane capacity = 36,000 vehicles/day

River Street Duplication

Project Summary (Paul Busmanis):

- 2019/20 concept plans developed with public consultation
- Adopted 4-stage program of works
 - Stage 1: WEST BALLINA Burns Point Ferry Rd to Barlows Rd
 - Stage 2: BALLINA ISLAND Henry Philp Ave to Tweed St
 - Stage 3: FISHERY CREEK BRIDGE Brampton Ave to Henry Philp Ave
 - Stage 4: PACIFIC HWY CONNECTION Smith Dr to Burns Point Ferry Rd
- Detailed design of Stage 1 completed, ready for construction.

River Street Duplication – Overall Staging

Stage 1

WEST BALLINA Burns Point Ferry Road to Barlows Road

Stage 2

BALLINA ISLAND Henry Philp Avenue to Tweed Street

Stage 3

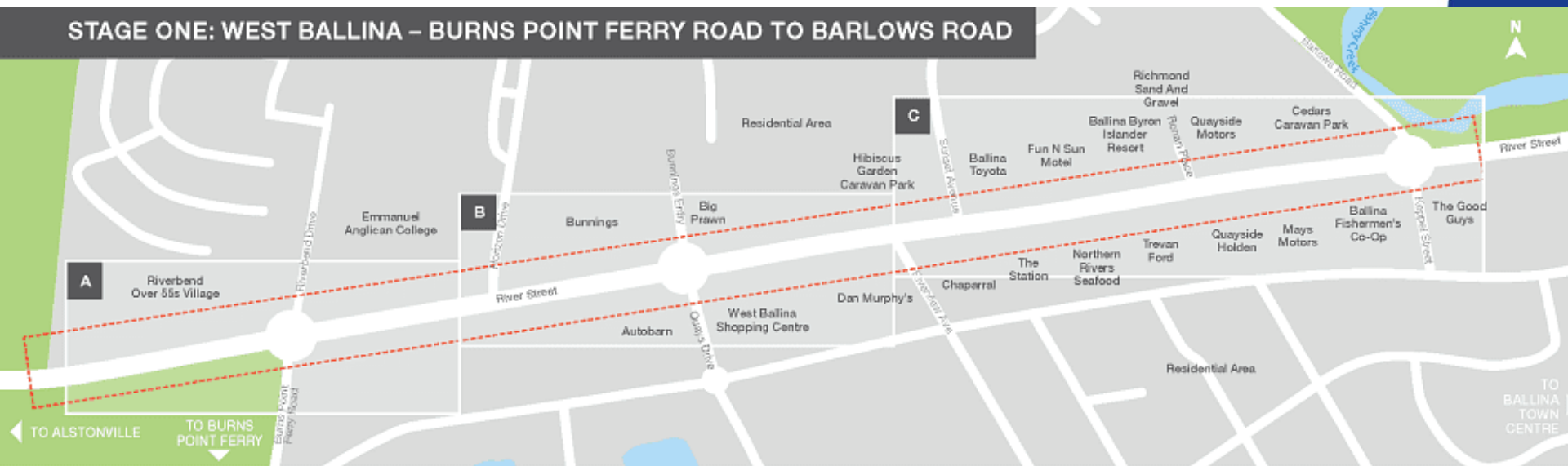
FISHERY CREEK BRIDGE Brampton Avenue to Henry Philp Avenue

Stage 4

PACIFIC HIGHWAY CONNECTION Smith Drive to Burns Point Ferry Road

River Street Duplication – Stage 1

STAGE ONE: WEST BALLINA – BURNS POINT FERRY ROAD TO BARLOWS ROAD



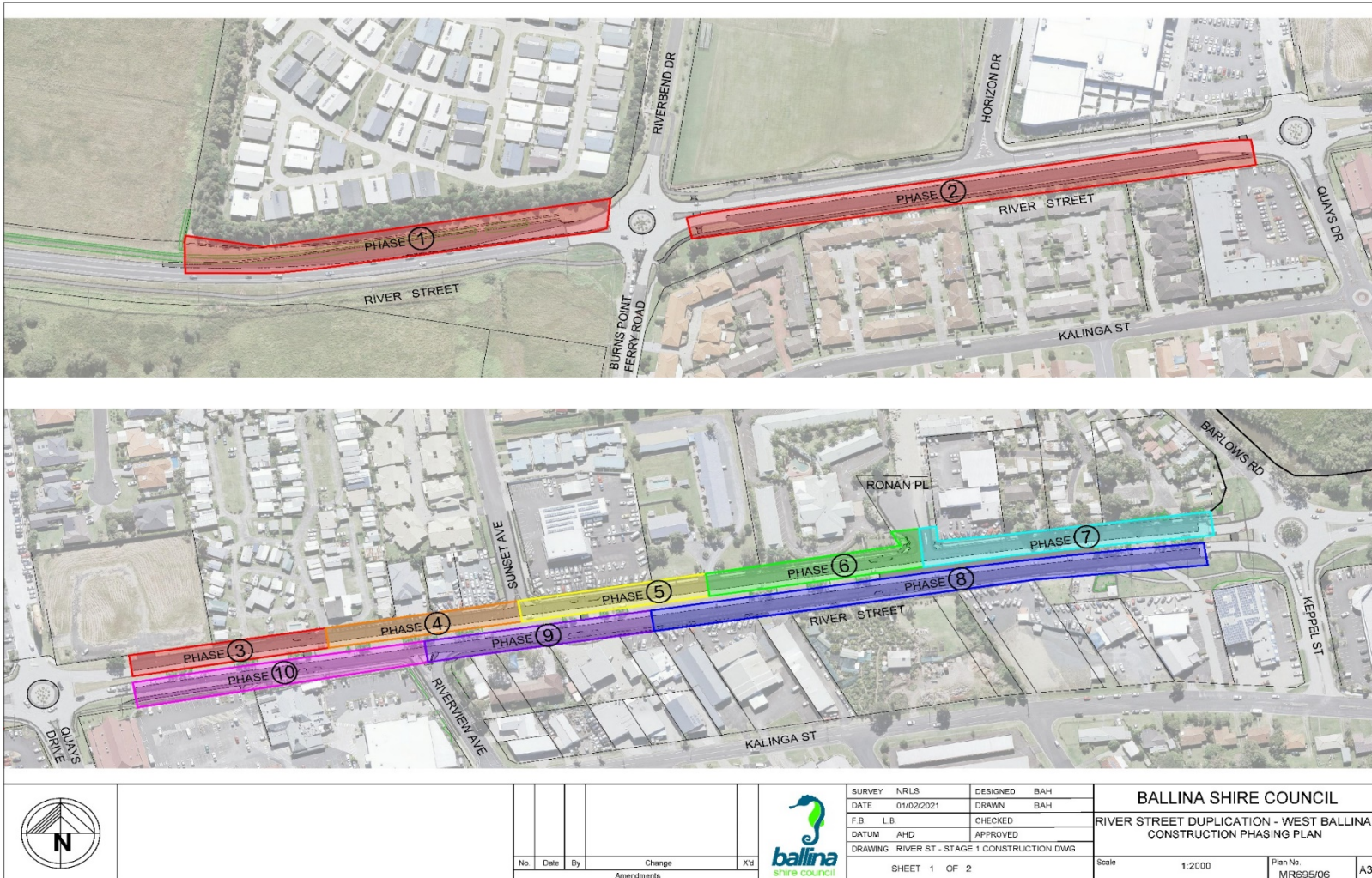
Stage 1: WEST BALLINA

Burns Point Ferry Road to Barlows Road

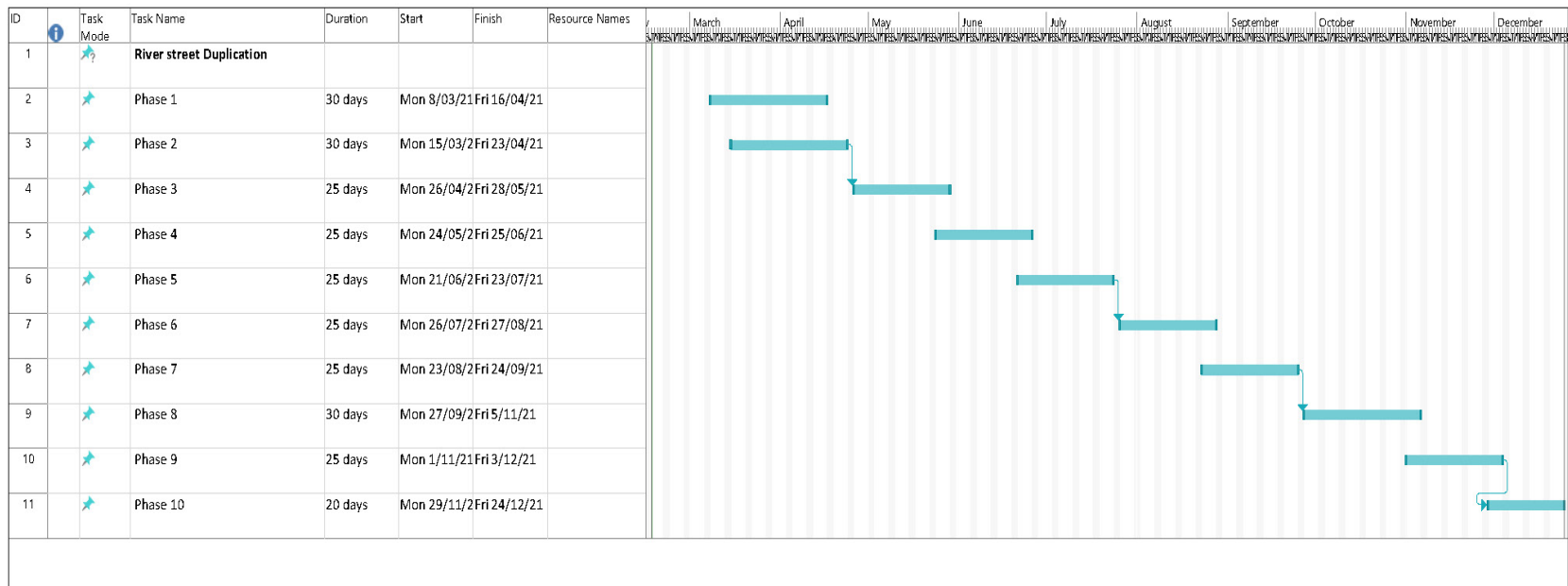
(Paul Crozier)

- duplication of eastbound and westbound lanes. Existing concrete lane remains: new lane asphalt
- potential upgrade stormwater and water services
- raised median island
- street parking remains parallel to kerb
- additional footpaths (link between Burns Point Ferry Road and Quays Drive)
- upgrade existing pedestrian refuges
- new pedestrian refuge at Burns Ferry Road to Emmanuel Anglican College
- retain four bus shelters
- landscaping in median island will be replaced to improve visibility, safety and visual amenity
- Landscaping will enhance corner verges and include street trees. Landscaping will be delivered in stages after the road is opened to two lanes
- Stage 1 will be segmented into 10-location phases

Stage 1 will consist of 10 phases



Program – indicative phases and duration



Subject to weather and site conditions

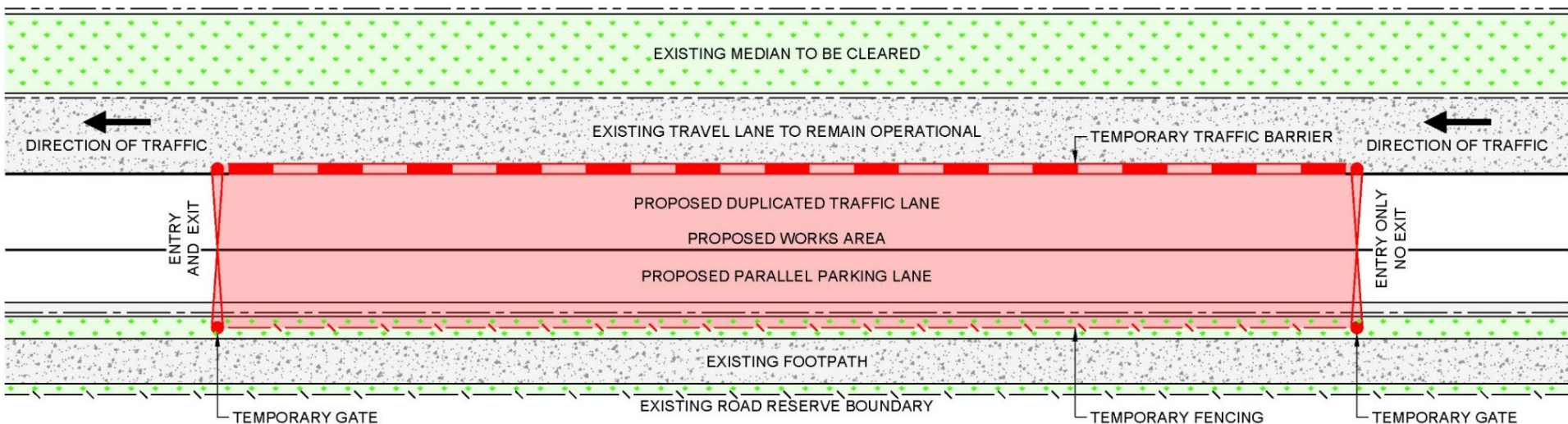
Phases are based on:

Phases are based on:

- Driveways and intersection to ensure one lane of access into properties
- Some segments are longer, and will require the use of the rear lane access into properties to maintain travel lane in River Street
- Some segments split across properties to maintain access and ensure business continuation
- To maintain travel lane, parking will be reduced during construction. Parking may not be available out front of businesses during particular phases
- Disruption to travel lanes will be outside peak traffic periods

Typical Construction Profile

- construction profile and works compound for each phase of the project
- work compound highlighted red
- existing travel lane to remain operational



Typical Construction Images



Typical Construction Images



Potential impacts to residents and businesses during construction

- Dust
 - Use of water carts to help minimise dust
- Noise
 - Construction works occur during the day to limit disruption to residents and visitors staying with accommodation providers
 - Construction days/times Mon-Fri 7am-6pm, and at times Sat 8am-1pm
- Access to business and residents
 - Onsite staff to work with business and residents to maintain customer and delivery access where possible or provide alternative access points.
 - Please make contact prior to specific phase of work to discuss alternate access
- Car Parking
 - to maintain travel lane, parking will be reduced during construction at the active phase. Parking may not be available out front of businesses during particular phases.

Continued next slide....

Potential impacts to residents and businesses during construction

- Utility upgrades and outages
 - any power and water outages will be notified in advance (via regular email updates).
- Pedestrian Access
 - temporary pedestrian detours around construction zones
- Travel delays
 - every attempt to keep travel lane open.
 - Speed limit reductions around construction zones.
 - there will be traffic delays. Council communicating to the wider community to allow extra travel time.
- Bus Shelters
 - temporary relocation as phases progress to be communicated to bus services and via regular email updates.
 - On completion, the location of the four bus shelters will be reinstated.

-
- How we can assist:
 - corflute signage to impacted businesses
 - communication updates via email prior to the commencement of each phase
 - communication to broader community via Community Connect and the local media
 - availability of key contacts to address issues onsite
 - Key construction contacts:
 - Brett Howard (project and design) 1300 864 444
 - Paul Crozier (construction) 0428 960 655
 - Dan Leigh (onsite) 0429 294 125
 - Robbie Hunter (underground works and concrete/drainage) 0419 473 939
 - Tracy Lister (Coordinator Communications) 1300 864 444 tracy.lister@ballina.nsw.gov.au
 - Start date: 1st March 2021 (phase 1 and 2).
Post Easter (complete phase 2 and phase 3 onwards).



Questions and Answers

If you have a question or concern but prefer not to voice it today, please email tracy.lister@ballina.nsw.gov.au



Thank you for attending today's
information session

p: 1300 864 444 | e: council@ballina.nsw.gov.au

Facebook/BallinaShireCouncil

ballina.nsw.gov.au

ballina
shire council

Pedestrian Accessibility and Crossings

- Widen and improve the existing pedestrian crossing points within Stage 1.
- Provide a new pedestrian crossing point near Burns Point Ferry Road.
- Alter the landscaping to improve visibility for pedestrians using the refuges and motorists approaching pedestrian refuges.
- May improve gaps in the traffic flow and allow increased opportunities to cross two oncoming traffic lanes.
- Fill in missing links to the footpaths where possible to improve the network connections – specifically Burns Point Ferry Road to Quays Drive
- Upon completion there will be a 2.0m wide shared path the length of Stage 1. This new shared path will supplement the existing on road bike path (via Riverside Drive) in West Ballina

Traffic Lights

- Previous traffic and pedestrian data has not met the warrant required by Transport for NSW (TfNSW) to approve a signalised intersection.
- We have however engaged a data survey company to collect pedestrian and traffic volume data at the River Street/Quays Drive/Bunnings intersection and at the two pedestrian refuges east of the roundabout near the West Ballina Tavern and the Shell Service Station. This data has now been received and is currently being analysed for a possible submission to TfNSW.
- This is a long process and requires consultation and subsequent approval from TfNSW, along with council funding and endorsement.
While this pedestrian lights are not included in the current works, the project does not preclude, or even make this difficult, in the future if the assessment supports installation.
- As part of the next construction stage of the River Street Duplication, Stage 2, the Brunswick Street intersection will be upgraded to a signalised intersection.
- The duplication project may improve gaps in the traffic flow and allow increased opportunities to cross two oncoming traffic lanes.