

# community connect

the newsletter of ballina shire council

## WOLLONGBAR LAND RELEASE TO BENEFIT LOWER INCOME EARNERS

**Great news** for people on low to moderate incomes who are looking to buy land to build a new home in Wollongbar. A condition of Council receiving a grant of \$4.5 million under the Federal Government's Building Better Regional Cities (BBRC) Program, is that Council will be offering rebates of up to a maximum of \$30,000 for vacant blocks of land at Wollongbar.

The BBRC program aims to provide affordable housing solutions for low to moderate income-earners in different parts of Australia. In the Ballina Shire, rebates of up to \$30,000 will be available for 80 lots of land at Wollongbar. This is an exciting project for the Ballina Shire, both from an economic development and affordable housing perspective, and hopefully it will allow some people, who may not have had the opportunity, to enter the housing market.

This is not a first home-owner scheme; rather it is for people on low to moderate incomes and provides a genuine rebate on the price of land for people who meet the criteria set by the Federal Government.

For more information call 6686 1239.



## WHAT'S YOUR VISION FOR THE BALLINA SHIRE?

**Ballina Shire Council** is reviewing its vision for the Ballina Shire and is seeking input from residents.

**Council's current vision is:** *A shire that provides a healthy lifestyle, a prosperous natural environment and a community with a strong sense of place.*

What do you think? Is this your vision of the Ballina Shire? If you had the opportunity to rewrite Council's vision what would you say?

Send your suggestions to Ballina Shire Council Vision, PO Box 450, Ballina NSW 2478 or complete the online feedback form at [www.ballina.nsw.gov.au](http://www.ballina.nsw.gov.au)



## NEW PATH TO LENNOX POINT

**The shared path** from Brian Smith Boardwalk at Seven Mile Beach to Pat Morton Lookout has been completed, making the scenic walk to the headland accessible to more members of our community.

This connects to the village of Lennox Head with a path from the Community Centre in Park Lane through to the carpark at Pat Morton Lookout and linking to the stairs at Lennox Point.



# enssi this issue



Wollongbar land release to benefit lower income earners	1
What's your vision for the Ballina shire?	1
New path to Lennox Point	1
From the Mayor's Desk	2,3
Ballina rates well compared to other councils	3
Australia day celebrations 2013	4
Olympic swimming champion to be our Australia day ambassador	4
Major extension works at Ballina Byron Gateway Airport	4
People Poll	5

What to do over the summer holidays	6,7
Community Centres: Kidz Klub	7
Northern Rivers Community Gallery	8
Myth Busters	9
Free TV disposal service	9
Have you seen a koala in the Ballina shire?	9
Keeping motorists safe during floods	9
Don't play renovation roulette	10
Swim safely this summer	10
Do you have a war time story from Ballina Shire?	10
Development processes in Ballina Shire	11
Future planning in Ballina Shire - what does Council do?	11
Garage sale signage	11
Major bridge and road projects	12
Use the correct bags in your organics bin	12
Online community services directory	12
Update on projects	13
Staff member profile: Joe Sabine	13
Rangers on patrol	14
Water Talk: Issue 20	
<i>Ballina recycled water scheme</i>	
<i>Wollongbar urban expansion area sewerage scheme</i>	
<i>Urban stormwater management plan</i>	15
Festival and event funding program	16
Contact your Councillors	16



## FROM THE MAYOR'S DESK

**Cr David Wright**

***I was very pleased to see** that the latest data from the NSW Division of Local Government highlights that Ballina Shire Council continues to charge lower rates than many of our neighbouring councils yet we still manage to provide a wide range of services and facilities for the communities we represent. I encourage you to review these figures in the tables presented in this edition of Community*

*Connect as they demonstrate the significant differences between the councils.*

*We have managed to maintain lower rates by operating efficiently, focusing on core Council services and by taking advantage of alternative means of generating income - for example property development. The property ventures have allowed us to undertake many community projects that have not come at the expense of ratepayers. This is a result I am very proud of.*





## BALLINA RATES WELL COMPARED TO OTHER COUNCILS

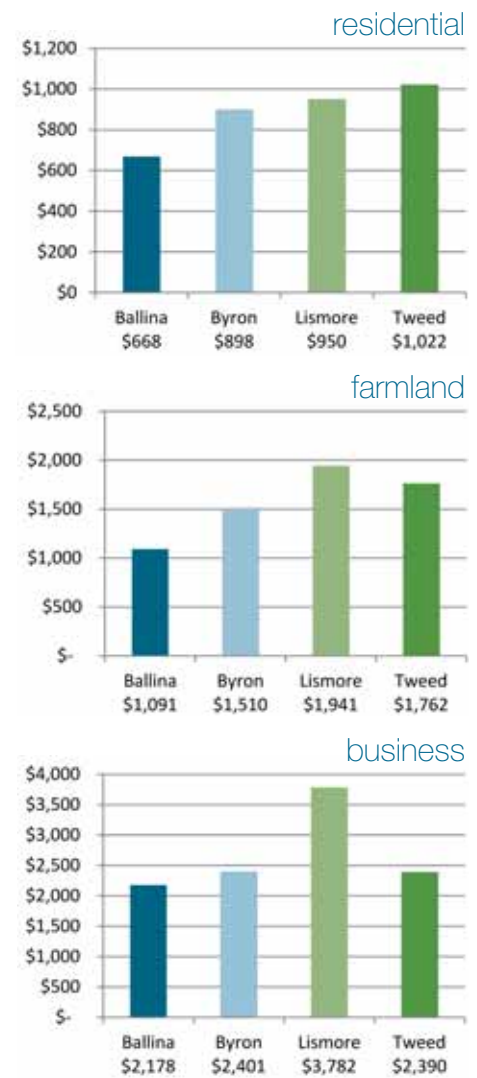
**New information** released by the NSW Government in November 2012 shows the Ballina Shire Council has lower rates than the Tweed, Byron and Lismore Councils whilst providing a high level of services to the community.

The NSW Division of Local Government produces annual comparative data publications on councils to help benchmark their performances and one of the key indicators is the average rates charged by each council.

The latest report shows the Ballina Shire Council's financial management is sound, and its commitment to trying to source income from other activities such as property development has provided successful outcomes for the community.

Many years ago Council made a conscious decision to pursue other revenue-raising opportunities and this has resulted in residents and businesses paying lower rates than neighbouring council areas.

AVERAGE RATES COMPARISON ACROSS THE REGION



\* Data sourced from Division of Local Government's latest comparative data publication (2010/11)

*Like many councillors I often get stopped by people wanting to talk about Council issues and our accessibility to the community is one of the great things about Local Government.*

*After over 25 years in Local Government I have heard many criticisms about the Council – and yes - some have been deserved. Many criticisms, though, have been unwarranted. Not everyone realises that Council operates under laws set out by the NSW Government and in many cases it makes the decisions and rules but Council has to implement or enforce them, even when we may not agree with them.*

*A good example of this is a recent decision by the State Government to take control of the future rezoning of the Stewart Farm, which is the land to the south of the Headlands Estate at Skennars Head. As an elected Council, we were very keen to see key issues such as beachfront access, environmental buffers and protection of the land on the eastern side of the Coast Road, as fundamental principles of any*

*rezoning. Unfortunately, the State Government did not agree with this and they have now appointed another State Government approved body to consider this rezoning. It will be very interesting to see what they recommend.*

*Council staff are sometimes unfairly criticised and I commend our employees for their dedication and professionalism and thank them for their efforts in 2012.*

*I was really pleased to hear our Australia Day Ambassador this year will be Melanie Schlanger who represented Australia in swimming at the London Olympics. She won a gold medal and two silver medals at the 2012 Games and it will be a great honour to hear her speak at the Ballina Shire Australia Day Ceremony.*

*As the holiday season looms I wish all residents of the Ballina Shire a very happy and safe Christmas. I have high hopes for 2013 and I wish you the very best of health and fortune for the New Year.*



**Nominations are open** for the 2013 Ballina Shire Australia Day Awards. The Awards recognise the efforts and achievements of people who make our shire a special place to live.

If you know someone who resides in the Ballina Shire who has a commitment to community service, or who has achieved some exceptional goals, nominate them for an Australia Day Award.

There are five awards for recognition:

- Young Citizen of the Year (under 21)
- Citizen of the Year
- Volunteer of the Year
- Sports Person of the Year
- Community Event of the Year

The winners of the Awards will be announced at the official Australia Day ceremony at 9:00am on Saturday 26 January, Elizabeth Ann Brown Park, Alstonville.

Award nomination forms can be downloaded from the official Australia Day website [www.ballinaaustraliaday.com.au](http://www.ballinaaustraliaday.com.au) or collected from Council's Customer Service Centre, 40 Cherry Street, Ballina.

Nominations close at 2:00pm, Friday 4 January 2013.



## Olympic Swimming Champion to be our Australia Day Ambassador

**London Olympic Swimming Champion** Melanie Schlanger will be the special guest at the shire's official Australia Day ceremony.

Melanie, an extremely focused and humble athlete, enjoyed recent success at the 2012 London Olympic Games, winning Australia's first gold medal as part of the 4x100m freestyle relay team.

Melanie then went on to win two silver medals in the 4x200m freestyle relay and 4x100m medley relay, as well as finishing fourth in the individual 100m freestyle. Melanie will make a public address as part of the official ceremony on Australia Day.

The official ceremony will be held on Saturday 26 January 2013 at Elizabeth Ann Brown Park, Alstonville (next to Crawford House), from 9am to 11am.

The ceremony will include the traditional flag raising, welcome to country, public address by Melanie Schlanger, announcement of the new Australian citizens and Ballina Shire Australia Day Award recipients.

As part of the activity program, Alstonville Pool will have free entry from 11am to 6pm this Australia Day. Come along and enjoy a wonderful day with family and friends!

Enquiries: Holly Archibald, Events & Grants Support Officer, Ph: 6686 1457.

## MAJOR EXTENSION WORKS AT BALLINA BYRON GATEWAY AIRPORT

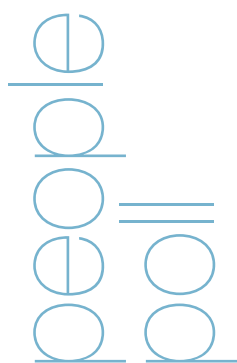
**If you are visiting** the Ballina Byron Gateway Airport in the next several weeks you will notice major construction works are underway to build a new taxiway for planes, an extension to the existing aircraft parking bays and associated drainage and services installation.

Some of this work is being carried out at night to minimise disruptions to aircraft services.

You can follow the progress of the works on Council's website [www.ballina.nsw.gov.au](http://www.ballina.nsw.gov.au).







Margaret Readford

*What do you like about living in Ballina Shire?*

Great areas and beaches to walk and exercise, no traffic, fresh air and no pollution.

*What is the one thing that you think the Council should do to improve the lifestyle you have in Ballina Shire?*

How soon will Council commence the operation of an indoor pool facility?

**Council's Response**

Council doesn't necessarily have to be responsible for providing another indoor pool. Other private parties may be interested in providing such a facility if the Ballina Indoor Swim and Gym Centre closes. However Council is very keen to look at options to improve the existing Ballina Memorial Swimming Pool and is currently reviewing funding strategies to provide those improvements.



Lyn Kolo

*What do you like about living in Ballina Shire?*

Beaches, weather, new highway bypass has made the town so much better.

*What is the one thing that you think the Council should do to improve the lifestyle you have in Ballina Shire?*

Children/teens (10-17 years) not into skateboarding or surfing miss out. I would like to see Council provide the infrastructure (facilities) to community service agencies or other groups so they can provide activities at a low or no cost to parents, similar to what the PCYC offers in other areas.

**Council's Response**

This is a difficult one and we have constructed and expanded the existing skateparks in recent years to improve facilities for youth who may not surf. The Lennox Head Cultural and Community Centre and the Alstonville Leisure and Entertainment Centre are also regularly used by young people with both centres virtually booked out on week nights.

We are also investigating the construction of a new indoor sports facility for Ballina and funding will be the major impediment to the project proceeding.

Also our Youth Council recently oversaw a Youth Forum which had young representatives from right across the shire attend. The outcomes from that forum are being presented to Council during December and the newly elected Council is keen to see what it can implement in response to that forum during the next four years.



Colin Siviour

*What do you like about living in Ballina Shire?*

Laid back lifestyle, great climate, everything we need is in the area, handy to Brisbane and other cities via the airport.

*What is the one thing that you think the Council should do to improve the lifestyle you have in Ballina Shire?*

Maybe the new Council could look more favourably at approving business development in West Ballina and not just concentrate on the Southern Cross Industrial Estate.

**Council's Response**

A large Bunnings store is currently being constructed on the former highway service centre site (Big Prawn) in West Ballina. This store is expected to act as a key attractor for new business activity in West Ballina.

Council has recently granted consent to a new highway service centre to be prominently located adjacent to the Teven Road/Pacific Highway interchange. This facility is planned to service the needs of motorists using the Pacific Highway, as well as locals and those commuting within the region.

Under Council's new draft local environmental plan, properties located along River Street, Kalinga Street and Barlows Road in West Ballina have been allocated an B6 Enterprise Corridor zone. This zone is intended to support the numerous businesses currently operating in this locality and to stimulate new employment generating activities.

Council has also allocated funds in the current budget to prepare

a scheme for enhancing the southern entrance to Ballina. This scheme will complement new design criteria soon to be introduced for the redevelopment of private property along this corridor.



Lisa Hayden

*What do you like about living in Ballina Shire?*

The beaches and relaxed lifestyle; an ideal place to raise a family.

*What is the one thing that you think the Council should do to improve the lifestyle you have in Ballina Shire?*

I would like to see the return of the weekly garbage service for ordinary waste. We are a family of six with four young children and with waste collected fortnightly it gets a bit smelly.

**Council's Response**

The weekly organics collection service has allowed Council to increase our overall level of waste being recycled or re-used from around 30% to nearly 60% of the total waste collected. This has significant benefits for the community in that it means the life of our landfill will be extended by a number of years and with the last expansion of our landfill costing just under \$10 million this is a very big saving.

NSW State Government policy also supports the principle that mixed waste (i.e. ordinary or left over waste) should only be collected fortnightly to encourage people to re-use and recycle their waste. Unfortunately weekly collections of mixed waste result in lower recycling rates, which in turn results in more negative environmental outcomes and higher costs to the community.



# What to do over the *Summer Holidays...*

Looking for something to do over the Christmas and New Year period? Look below for educational, sporty action, family fun, creative and community events being held in the Ballina Shire these holidays...

## EDUCATIONAL

### Ballina Library Workshops

Christmas Craft – 4, 11, 18 December  
Angry Birds – 8, 15 January  
Collage Placemats – 11, 18 January  
Craft/Science Project – 21 January  
Ph: 6686 2831

### Lennox Head Library Workshops

Holiday Craft – 10, 17 January  
Pirate Pete Show – 24 January  
Ph: 6687 6398

### Australian Seabird Rescue Tours

Daily tours through sea turtle hospital at 10am (school holidays only)  
264 North Creek Road, Ballina  
Ph: 6686 2852

### Ballina Naval & Maritime Museum

Open daily from 9am to 4pm  
Regatta Avenue, Ballina  
Ph: 6681 1002

### Thursday Plantation

Open weekdays from 9am to 5pm and weekends 10am to 4pm  
Gallans Road, Ballina  
Ph: 6620 5150

### Ballina Manor

Free historical tours daily from 10am to 5pm  
Norton Street, Ballina  
Ph: 6681 5888

### Crawford House Museum

Heads, Necks, Hands & Tootsies: An exhibition of Costume Accessories  
Friday 14 December – Sun 10 March  
Open: Fri 10am to 4pm and Sun 1pm to 4pm  
Ph: 6628 5457

## SPORTY ACTION

### Lennox Head Sport & Recreation Centre

Activity Days – 14, 16, 18 January  
Sailing for Beginners – 15 January  
Sailing Regatta Day – 17 January  
Surf Clinics – 14, 17, 22 January  
Get Hooked on Fishing, Ballina – 21 January  
Adventure Camp - 21 to 25 January  
Come and Try Rugby League – 23 January  
Ph: 0266877168

### Alstonville Dance Studio

Summer workshop – Jazz, Contemporary, Hip Hop, Tap and Theatre  
16 – 19 January  
Ph: 0428 748 294

### Teven Valley Golf Course

Kids hire clubs free when playing with an adult  
1684 Eltham Road, Teven  
Ph: 6687 8386

### Ballina Tenpin Bowl

Open daily with Glow in the Dark Bowling from 12pm to 4pm  
16 Clark Street, Ballina  
Ph: 6686 5342

### Beach Horse Riding

Daily tours at Tassiriki Ranch  
Moylans Road, Empire Vale  
Ph: 6683 4602

### Classic Aero Adventure Flights

Take a scenic flight in a genuine ex RAAF warbird plane  
departs Ballina Byron Gateway Airport. Ph: 0432 318 282

### Byron Bay Air Charters

Scenic Coastal Flights  
departs Ballina Byron Gateway Airport. Ph: 6686 4876

### Sunrise Cycles

Hire a bike and ride along the Richmond River  
3 Hogan Street, Ballina  
Ph: 6686 6322

### Transition Cycles

Hire a bike and ride along the Richmond River  
49 River Street, Ballina  
Ph: 6686 6522

### Missingham Skate Park

Kingsford Smith Drive, Ballina

### Lennox Head Skate Park

Park Lane, Lennox Head

## FAMILY FUN

### Amaze N Place

Free alpaca feeding every day at 11am plus lattice maze, puzzles and café  
Open daily  
149 Wardell Road Alstonville  
Ph: 6628 6286

### Summerland House Farm

Tractor Rides, waterpark, gardens, playground, heritage cottage, The Grocer and mini golf  
Open daily  
253 Wardell Road Alstonville  
Ph: 6628 0610

### Macadamia Castle

Full program of daily activities including salt water crocodile exhibit, new wombat enclosure and cuddle a reptile at 10.30am and 2.30pm every day.  
Open daily  
1699 Pacific Highway, Knockrow  
Ph: 6687 8432

### Ballina Pool and Waterslide

Open daily  
River Street Ballina  
Ph: 6686 3771

### Alstonville Olympic Pool

Open daily  
Cnr Freeborn Place & Alston Avenue, Alstonville  
Ph: 6628 0826

### Ballina Players

You're a Good Man Charlie Brown  
11 – 20 January  
Ballina Players Swift Street Ballina  
Tickets: 6686 2440

### Richmond River Princess Cruise

Cruise the beautiful Richmond River  
Bookings essential  
Ph: 1800777666

### Ballina Fair Cinemas

Ballina Fair Shopping Centre, Kerr Street, Ballina  
Ph: 6686 9091

### Victoria Park

Explore the Big Scrub Rainforest  
Victoria Park Road, Dalwood  
Ph: 1800 777 666

## GET CREATIVE

### Kidz Klub at Lennox Head

Cultural and Community Centre  
Wednesday 2 – Friday 25 January  
Park Lane, Lennox Head  
Bookings: 6686 6291  
*More information about the Kidz Klub can be found on p.7*

### Northern Rivers Community Gallery

I Made this Card Workshops (open age) – 28 November to 23 December (no bookings required)  
Workshop for Kids – Imaginary Landscapes (6 – 11 years)  
18 January at 10am or 12pm (bookings required)  
44 Cherry Street, Ballina  
Ph: 6681 6167  
*More information about the workshops can be found on p.8*





## COMMUNITY EVENTS

### Boxing Day Races

26 December from 12pm  
Ballina Jockey Club, Racecourse Road, Ballina  
[www.ballinajockeyclub.com.au](http://www.ballinajockeyclub.com.au)

### New Years Eve Comedy Festival

Monday 31 December from 7.30pm  
Ballina RSL Club, River Street, Ballina  
[www.ballinarsl.com.au/entertainment](http://www.ballinarsl.com.au/entertainment)

### Go4Fun Family Day Out

12 January from 11am to 2pm  
Free kids games and activities, prizes and yummy food  
Kentwell Community Centre, Bangalow Road, Ballina  
Ph: 6621 9800

### North Coast Street Machines

Sunday 13 January from 8.30am  
Seagulls Rugby League Grounds, Kingsford Smith Drive, Ballina  
Ph: 0413 273 351

### Australia Day Celebrations

Saturday 26 January from 9am to 11am  
Elizabeth Ann Brown Park, Wardell Road, Alstonville  
[www.ballinaaustraliaday.com.au](http://www.ballinaaustraliaday.com.au)

## COMMUNITY MARKETS

### Ballina Twilight Markets

Every Thursday from 4pm to 8pm  
Fawcett Park, Ballina

### Ballina Missingham Farmers Markets

Every Sunday from 6am to 12pm  
Kingsford Smith Drive, Ballina

### Ballina Community Markets

Sunday 16 December & Sunday 20 January  
Canal Road, Ballina

### Lennox Community Markets

Sunday 30 December & Sunday 13 January  
Williams Reserve, Lennox Head

### Alstonville Community Markets

Sunday 13 January  
Alstonville Showground, Commercial Road, Alstonville

## CHRISTMAS CHEER

### Photos with Santa

1 – 24 December from 10.30am to 3pm (Thurs 13 & 20 from 10.30am to 6pm)  
Ballina Fair Shopping Centre, Kerr Street, Ballina  
Ph: 6686 8555

### Sanctuary Village Christmas Lights

View the Christmas lights display every night in December  
Ross Lane, Lennox Head  
Ph: 6687 6022

### Carols by Candlelight at Alstonville

Saturday 15 December from 7pm to 9pm  
Alstonville Showground  
Ph: 6628 0358

### Headliners Chorus Christmas Spectacular

Saturday 15 December from 7pm  
Ballina RSL Club, River Street, Ballina  
[www.ballinarsl.com.au](http://www.ballinarsl.com.au)

## FAMILY NEW YEARS EVE ENTERTAINMENT

### Shaws Bay Hotel

Family friendly afternoon with live music, beach volleyball, cricket, soccer and family games.  
5pm-11pm  
Free entry  
Ph: 6686 3347

*Note: activity calendar compiled as at 28 Nov 2012.*

*Prepared by Ballina Visitor Information Centre, 6 River Street, Ballina.*

*For further information visit [discoverballina.com](http://discoverballina.com) or phone 1800 777 666*

Still can't find something to do? Maybe there is something for you at one of our community centres.

## COMMUNITY CENTRES

### Kentwell Community Centre

(formerly Ballina Community Services Centre)  
20 Bangalow Road, Ballina  
Ph: 6681 5549

Broadband for Seniors (free computer training), The Silversmiths (singing group), SOL North Coast Nutrition, Sing Australia, Ballina Camera Club, INTRA – The Buttery's Drug & Alcohol Outreach Program, Breast Cancer Support Group, AMORC, Neways International, Interrelate Family Centres, Northern Rivers Gambling Counselling Service, Tarmons House Mental Health Outreach Service and more!

### Lennox Head Cultural and Community Centre

1 Mackney Lane, Lennox Head  
Ph: 6687 6291



Lennox Head Playgroup, Lennox Head Residents Association meetings, Community Health Nurse: Early Childhood Clinic, Psychologist/Psychotherapy Services, LifeBall (sport for seniors), Netball, Yoga, Volleyball, Wheelchair Sports, Mind Yoga, Futsal, Casual Sports, Library services and more!

Available for meetings, functions, parties and community events.

### The Richmond Room

Regatta Ave, Ballina  
Ph: 6687 6291

Large function room available for meetings, functions, parties and community events.

To book space or enquire about what's on at the community centres  
email: [communityfacilities@ballina.nsw.gov.au](mailto:communityfacilities@ballina.nsw.gov.au)  
Ph: 6687 6291  
Get your copy of What's On from the community centres or download from [www.ballina.nsw.gov.au/communityfacilities](http://www.ballina.nsw.gov.au/communityfacilities)

## Kidz Klub @ Lennox Head Cultural and Community Centre



Join us for another fun-filled holiday time at Kidz Klub. Professional child care but serious fun. Activities include sports-based & clowning games like football, ping pong & juggling balls & stunts; parachute games; team building games; art & craft activities; board games; dress ups and MORE!

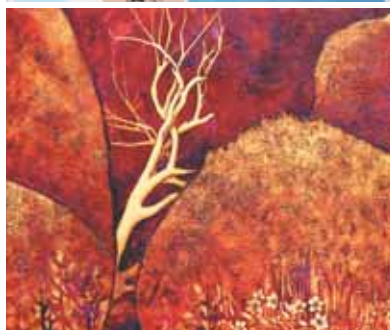
Dates: 2 - 4 January  
7 - 11 January  
14 - 18 January  
21 - 25 January

Mornings: 9:30am-12:30pm  
Afternoons: 1:00pm-4:00pm  
Full Day: 9:30am-4:00pm

\$20 per child per session or \$40 full day (4½ -16 years)

Pre registration essential.  
Phone 6687 6291 for advanced bookings.





## ARTS NEWS

FROM THE NORTHERN RIVERS COMMUNITY GALLERY

28 November - 23 December

**Coastal Lines:** An exhibition of textiles, ceramics and mixed media works by Anne Leon, Potts and Barbara Carmichael, exploring the qualities of our inspiring coastal environment.

**Seasonal Journeys:** New collages and paintings by Wendy Taylor, conveying visual and sensory memories of past journeys.

## I made this card @ Northern Rivers Community Gallery

**Drop in anytime** and create your own unique Christmas cards using beautiful rubber stamps.

Printing materials are included in the cost and the printing techniques are suitable for all ages.

Japanese motif woodblocks of whales and waves make for beautiful handmade cards for Christmas.

**Dates:** until Sunday 23 December 2012.

**Hours:** 10am - 4pm Wednesday - Friday and 9:30am - 2:30pm on weekends.

**Cost:** Cards \$4 each or make six cards for \$20 (suitable for all ages)

**Ph:** 6681 6167 or just drop in.

9 January – 3 February

**Broken Headlands:** headland paintings by Maryanne Shae and Rick Molloy

**Namaste:** New work inspired by a trip to Nepal, by Mirra-Winni Gaze

**Return to Girraween:** an exhibition of paintings inspired by the Granite Belt region, by Karyn Fendley

**A Geography of Light:** printmaking, by Colleen DaRosa, exploring the changing light as she travelled from Australia to Europe.

**BodyScapes:** mixed media explorations of the body and the landscape by Faye Maxwell.

Launch Event Saturday 12 January 2013, 2pm - 4pm

## Imaginary Landscapes Kids' Workshop @ Northern Rivers Community Gallery

**Be inspired** by five different exhibitions exploring landscapes near and far. Work with artists Sarah and Nick Harvey to collage your own imaginary landscape. Explore composition, colour and shape using simple, recycled materials for surprising results.

**Date:** Friday 18 January

**Hours:** 10am - 11.00am OR 12noon - 1pm

**Cost:** \$10 each (non refundable) recommended for kids 6 - 11 years

**Ph:** 6681 6167 (bookings essential)



Northern Rivers Community Gallery

44 Cherry Street Ballina NSW 2478

Ph: 6681 6167 Open Wed – Fri 10am – 4pm

Weekends 9.30am – 2.30pm

Closed 24 Dec to 8 Jan inclusive

Subscribe to e-news [www.ballinanews.net/newsletters](http://www.ballinanews.net/newsletters)





## MYTH BUSTERS

### Pelican 181 is closed because Council increased the rent

The rent being charged at Pelican 181 was based on a tender submitted by the operators. Unfortunately the business was closed due to an Administrator being appointed by a creditor (not Council). Three proposals have now been submitted to re-open the business and Council will make a decision on the preferred option by Christmas.

### Wigmore Arcade is to be completely demolished

Council has not yet made a decision on the future of the Wigmore Arcade. Council is continuing to examine options to best ensure that the arcade remains a popular destination well into the 21st century. Complete demolition is not considered to be a viable option due to the impact on tenants and the high cost of undertaking such work. Advice on the best option will be submitted to Council through an independent feasibility assessment that is currently being prepared. Council's main objective with any re-development is to strengthen the Ballina town centre.

### The new shared path at Lennox Head could have been designed without a handrail

The shape of the adjacent slopes meant that the handrail was required for the design to be compliant with the relevant Australian standard. Non compliance with such standards can mean Council will not have public liability cover in the event of an accident and claim.

### Council's road resealing program increases traffic noise

At some locations Council is resealing asphaltic concrete (hot mix) road surfaces with a bitumen spray seal. Some residents feel that the spray seal increases traffic noise. This can be the case, however in the locations where Council is using this treatment the difference in noise performance is very very small. A hot mix treatment is typically more than four times the cost of a bitumen spray seal. This approach means Council is maximizing its resealing budget. Resealing is important as it protects the road pavement from the long term damage associated with water intrusion.



### Do you have an old television you no longer want?

Ballina Shire Council is offering a free disposal service until Christmas Eve. All unwanted televisions can be taken to the Ballina Waste Management Facility near the airport. There is no charge to Ballina Shire residents and the televisions will be sent on to a recycling facility. To take advantage of the free disposal, bring along your rate notice or licence to show that you live in Ballina Shire.



## HAVE YOU SEEN A KOALA IN THE BALLINA SHIRE?

**If you have seen a koala** in the Ballina Shire recently, or some time ago, please call the Council offices and let us know.

The information will be used in the preparation of a Koala Habitat Study which will include the mapping of koala habitat, identification of habitat restoration opportunities and will allow for the consideration of the welfare of koalas in the shire.

The Koala Habitat Study includes a project reference group that includes government agencies and stakeholder interest groups. The group provides a forum for information sharing and discussion to help guide the study process.

Phone Friends of the Koala on 6622 1233 to report an injured koala or to obtain further information about koalas, their food trees and koala conservation.



## KEEPING MOTORISTS SAFE DURING FLOODS...

**In the event of floods** Ballina Shire road closure information can be found on Council's website or phone 6686 1498

For information regarding all regional roads, including those in Ballina Shire, **visit [myroadinfo.com.au](http://myroadinfo.com.au)**



*If you have any other stories you want clarified please email Council at [mythbusters@ballina.nsw.gov.au](mailto:mythbusters@ballina.nsw.gov.au)*



## DON'T PLAY RENOVATION ROULETTE

**The dangers of asbestos** have been well documented in recent years with microscopic asbestos fibres capable of causing asbestosis or lung cancer.

Many buildings erected between the 1940s and 1980s contain asbestos (fibro-cement). It was commonly used as a lining in bathrooms, wet areas and under eaves and as insulation. It was a particularly popular building material in coastal areas because of its resistance to salt air.

Many houses still contain asbestos and this is not dangerous if the building is in good condition and the asbestos is not disturbed. Health risks arise when asbestos is handled or broken, particularly when buildings are renovated or demolished.

Because of the public health risk associated with asbestos the NSW Government has strict laws associated with the disturbance, removal, transportation and disposal of the material.

- If more than 10 square metres needs to be removed use a licenced asbestos remover.
- Never pressure clean asbestos.
- Minimise risk by using products available on the market that can be painted direct to the surface without having to prepare first.

Asbestos can only be disposed of at a waste facility licenced to receive it. Ballina Shire's waste facility is not currently licenced. The nearest licenced facility is at Lismore where it must be delivered triple-wrapped.

There is a lot of information about the handling, removal and disposal of asbestos on Council's website.

If you have an enquiry or concern about the management of asbestos phone Council's Regulatory Services Group 6686 1210.



## SWIM SAFELY THIS SUMMER

**The summer swimming** and surfing season is here and contracted surf lifesavers and volunteers are again patrolling beaches in the Ballina Shire. For your safety please swim between the flags.

Beach	Patrols start	Patrols finish
Lighthouse Beach	Not patrolled during 2012/13	
Shelly Beach	24/09/2012 22/12/2012 15/04/2013	05/10/2012 29/01/2013 29/04/2013
Lennox Head Beach	24/09/2012	29/04/2013
Sharpes Beach	25/09/2012 22/12/2012 29/03/2013 13/04/2013	07/10/2012 29/01/2013 01/04/2013 29/04/2013

Patrols normally operate from 9.00am to 5.00pm. Up-to-date beach and surf safety information is now at your fingertips. Download the free iPhone application from [www.beachsafe.org.au](http://www.beachsafe.org.au). The app gives updates on conditions at more than 11,000 Australian beaches.

*BeachSafe is brought to you by Surf Life Saving Australia.*



## DO YOU HAVE A WAR TIME STORY FROM BALLINA SHIRE?

**Council is seeking stories** from members of the community about war-time in Ballina Shire, either through documents, photographs, objects and/or oral histories.

If you have any information relating to World War I & World War II or the Vietnam War we would like to hear from you. Stories can relate to any aspect of these wars including war service, how those at 'home' responded to war-time circumstances, or how communities adjusted after the war. Stories from men and women, as adults or as children would be appreciated.

Enquiries: Kate Gahan, Cultural Development Officer (Wed to Fri), Ph 6686 1284.



*Image courtesy Wardell Red Cross*





## DEVELOPMENT PROCESSES IN THE BALLINA SHIRE

**The issues surrounding** planning and development, particularly large land releases, can be contentious, particularly for those people living near or directly impacted by proposed developments.

The areas of the shire in which new subdivision and construction occurs, as well as areas which are experiencing 'infill' redevelopment, have been identified in strategies endorsed by both Council and the NSW State Government. Extensive community consultation precedes the adoption of these strategies. Importantly, these strategies also identify areas which are not suited for development because of their ecological or other significant values.

The principal strategic land-use planning document operating in our region is the Far North Coast Regional Strategy. This was introduced and is administered by the State Government and identifies areas which are investigated to accommodate projected populations through to 2031. The strategy also identifies potential ways of creating or promoting employment opportunities to support the needs of future residents. A copy of this document is available on the NSW Department of Planning and Infrastructure website ([www.planning.nsw.gov.au](http://www.planning.nsw.gov.au))

## FUTURE PLANNING IN BALLINA SHIRE - WHAT DOES COUNCIL DO?

**The NSW Government** may have earmarked areas of the shire for development, but it is the Council's responsibility to ensure the projects undertaken reflect the values in the shire, taking into account the environment and community expectations, and making sure there is adequate infrastructure such as roads, parks, paths etc in place.

All councils in NSW have two core planning roles: assessing proposed development applications (statutory planning) and planning for the future (strategic planning).

Ballina Shire Council, in carrying out its planning duties, needs to abide by the strict requirements, processes and laws determined by the NSW Government.

Council has a strong record of community participation and involvement with respect to its planning activities. It has a number of short, medium and long-term plans for the management of development, housing and

population growth and these are detailed in the Ballina Shire Growth Management Strategy 2012-2031, available from Council's website.

Council also has plans that provide direction and guidelines for matters such as retail development, affordable housing and heritage management. The Ballina Local Environmental Plan and the Ballina Shire Development Control Plan detail the Council's planning requirements for development.

We also have a range of plans that are specific to one area, to ensure the character and qualities of places are maintained and enhanced when determining their future needs and development. These include:

- Lennox Head Community Aspirations Strategic Plan
- Lennox Head Structure Plan
- West Ballina Structure Plan
- Southern Cross Precinct Master Plan
- Ballina Foreshore Master Plan
- Cumbalum Structure Plan
- Wardell Strategic and Land Use Plan

## LOOKING FORWARD IN THE BALLINA SHIRE

**Ballina Shire Council** has a large number of planning projects that are underway or are expected to start in 2013. These include:

- A Master Plan for Captain Cook Park in Ballina
- A Master Plan for the Clark Street industrial area
- Establishment of a planning framework for the West Ballina Enterprise Corridor
- Planning for health care facilities
- A koala plan of management
- Planning for public land management

## GARAGE SALE SIGNAGE

**Garage sales** are a great way to get rid of any unwanted items you may have around the house.

Many people do not know that signs advertising a garage sale are only allowed on the property where the sale is being held. To reduce litter please don't put signs on light poles or bus shelters etc.

Rangers patrol on weekends and fines can be issued.





## MAJOR BRIDGE AND ROAD PROJECTS

**More than \$2million** has been spent on several major upgrades of bridges and roads in recent months including:

- **Yellow Creek Bridge** (Meerschaum Vale) \$600,000
- **Gibsons Creek Bridge** (Teven) \$500,000
- **Martin St reconstruction** (Ballina) \$170,000
- **Rifle Range Road realignment** (Wollongbar) (\$1 million)

Weather permitting, work on the upgrade of the Tintenbar Road and Teven Road intersection will be finished by Christmas.

The reconstruction of Wardell Road near Lumleys Lane should be completed in the new year.

### Minor delays for resealing work

**If you have travelled** on the Coast Road recently you may have experienced minor delays whilst work crews reseal the road. Work is expected to be completed early in the new year (weather permitting). Other roads to be resealed in the near future include:

Rural	Urban	Regional
Alstonvale Rd Brooklet Rd Broken Head Rd Midgen Flat Rd Gallans Rd Marom Ck Rd Martins La East Old Bangalow Rd Pearces Ck Rd River Dr Rous Mill Rd Willow Bank Dr	Anderson Antrim Ashland Banksia Bartletts Fenwick Car Park Lee Pacific Ross Survey (Top Sect) The Serpentin Tanamera Kyla Graham Short Elliott William Shoalhaven Commercial Wyuna Merinda Wendy Douglas Bonview Elizabeth Brightonstmid Pine Spur Pine	Ross Lane The Coast Road
		<b>Section 94</b>
		Gap Rd Bagotville Rd Old Bagotville Rd Tintenbar Rd

## USE THE CORRECT BAGS IN YOUR ORGANICS BIN

**One of the major sources of pollution** in our organics bins is the type of plastic bags people are wrapping their food scraps in. Compostable Bags are the only bags allowed in the organics bin (green) as they break down within the composting period of 12 weeks. You can buy compostable bags at:

Lennox Head IGA- new stockist  
Wollongbar IGA - new stockist  
West Ballina Spar - new stockist  
Envirogreen on North Creek Road  
Bunnings in Ballina  
Nourish on Cherry St  
Richies IGA in Ballina



Please do not use "degradable" bags in the organics bin as they take anywhere from two to ten years to break down. You can only use these bags in your ordinary waste bin).



## ONLINE COMMUNITY SERVICES DIRECTORY

**Council has a Community Directory**, a guide to organisations and groups that service the Ballina Shire community. The directory provides key contact information about health, welfare, education, recreation, sporting and other community services.

Directory listings are self-maintained by individual organisations and groups. To view the Community Directory or to add your group's details look under Online Services on Council's homepage at [www.ballina.nsw.gov.au](http://www.ballina.nsw.gov.au)

In this edition of Community Connect we shine the spotlight on a very worthwhile service that is registered on the Community Services Directory the **Hot Meal Centre**...

The **Hot Meal Centre** provides meals to those in need every Tuesday and Friday from 11am to 1pm (except public holidays) in the Masonic Hall, cnr Swift & Cherry Streets, Ballina. A free Christmas lunch will be held on Friday 21 December.

Community members can volunteer their time to cook or clean up or donate food items.

Enquiries: St Francis Xavier Parish Office Ph: 6681 1048





## BALLINA LIGHTHOUSE AND LISMORE SURF LIFESAVING CLUB REDEVELOPMENT

**Members of the Ballina Lighthouse** and Lismore Surf Lifesaving Club are cheering with work on their new clubhouse now underway. Construction of the new \$3.5m clubhouse began in August and the new building is on track for completion in June 2013.

The concrete slabs for the first floor were poured in late November. You can follow the surf club's construction on Council's website [www.ballina.nsw.gov.au](http://www.ballina.nsw.gov.au).

## BALLINA BIO-CHAR AND WASTE-TO-ENERGY FACILITY

**Ballina Shire Council** is emerging as a national leader with its work on the construction of a Biochar and Waste-to-Energy facility. The plant will be built at the Waste Management Centre near the Ballina Airport and will convert organic waste and biosolids into electricity and biochar, which is a type of fertiliser.

The biochar stores carbon dioxide and improves the health of soils so this will be a new agricultural resource. It is also a solution to managing the waste of the region's growing population.

Council received \$4.25 million from the Federal Government's Regional Development Australia Fund for the construction of the facility. Staff are currently seeking the necessary planning approvals for the project including preparing an Environmental Impact Statement and a development application.

## NEW MARINE RESCUE TOWER FOR BALLINA

**Council has shortlisted** five applicants for the design of the new Marine Rescue tower near North Wall at Ballina.

Staff are currently assessing tenders.

## WOLLONGBAR SPORTS FIELDS

**Peachey Constructions** has been awarded the tender for the bulk earthworks for the development of new sporting fields and facilities at Wollongbar and began work this week.

The funding for the \$6.2 million project comes from the Federal Government's Building Better Regional Cities funding program. More information about the program can be found on p.1.



**Born:** Moree

**Favourite food:** chocolate cake

**Time with Ballina Shire Council:** 18 years on 13 March 2013. I started working at Council with NEWLOG (North East Weight of Loads Group) and was there for four years before I did some extra training and gained my certificates to become a Ranger.

**What the job entails:** Many people think that being a Ranger is all about dogs but the job is really varied. It takes in dogs of course, but other things such as stock (horses, cattle), illegal camping, littering, timed parking. There are only three rangers in the Ballina Shire so we are kept pretty busy.

Before lunch today we dealt with a stray dog, four roaming dogs, an abandoned car, illegal dumping of rubbish, and we've patrolled the shire's parks, beaches and reserves. I've also followed up two dog complaints.

Since I started 14 years ago the amount of paperwork has increased and dog complaints take up a lot of our time. There is still a prevalence of illegal dumping. I guess people don't want to pay the tip fees so they dump all sorts of waste.

Signage is another thing we look after. We look for illegally erected signs (garage sale advertisements or real estate signs) that don't adhere to Council guidelines and could hinder pedestrian or driver safety.

Also if there are cattle, or other stock on the road, we are called to attend. There's nothing boring about my job.

**Best part of the job:** I work in the most beautiful part of the country. This is our office and it's pretty good.

**Worst part of the job:** Dealing with aggressive people. Nobody likes being told they are doing the wrong thing. Most people we approach are good-natured about what they've done. It's only the odd few who spoil it. Usually people respond favourably when we talk to them. Education is the best tool we have to change behaviour. Issuing infringements and pursuing legal avenues are the last resort we take.

**Favourite part of the job:** A great outcome is when dogs are reunited with their owners.

**On my days off I:** like a punt, exercising and having a beer on a hot day.

**If I won lotto I would:** keep the status quo, make things a little more comfortable and a lot of friends and family would benefit.

staff member profile



## RANGERS ON PATROL

**Did you know** that over 12,000 dogs and cats are microchipped in the Ballina Shire? But not all are registered with Council; so if your pet is lost or found, or even worse is injured and requires veterinary attention, it makes our job of reuniting pets and owners very difficult.

Dogs make great pets, companions and best friends. Whilst most dogs are generally well behaved, not everyone is a dog lover. Council is obligated to promote and enforce responsible dog ownership. Our rangers regularly patrol the shire and follow up dog complaints to protect the public and the environment.

Rangers have many other tasks to attend to and often cannot be on the spot when incidents occur. Rangers rely on the public to report incidents and provide clear information so that incidents can be followed up.

Being a responsible pet owner means being a responsible member of the community, so:

- register your dog
- keep pets on an lead and under control in public areas
- recognise barking dogs are a nuisance and find a solution to the problem
- pick up your dog poo
- don't let your dog roam the streets

Breaches of the law attract hefty penalties and while rangers prefer not to issue fines, sometimes they have no choice.

Please look after your pets and respect our rangers if they talk to you about your animal. They are just following up on behalf of the community.

### Off-Leash Dog Exercise Areas

Council recognises the importance of dogs being allowed time to exercise unrestrained and there are six off-leash areas in the shire. Dogs can exercise, roam freely and socialise under the supervision of their owner or person in charge at the following designated off-leash areas:

- Bicentennial Gardens, the northern area of the reserve, Ballina
- Compton Drive, East Ballina
- Gap Road, Alstonville
- Seven Mile Beach, north of Lake Ainsworth, (old 4WD access point), Lennox Head
- Ballina Heights Estate, eastern reserve area, Ballina Heights
- Headlands Drive Drainage Reserve, Skennars Head
- The Spit, Ballina (*note: 12 month trial Sept 2012 - Sept 2013*)



### Dog Prohibited Areas



Because of the popularity of some beaches and the presence of migratory and shore birds, dogs are not allowed on:

- Shelly Beach
- Lighthouse Beach
- Seven Mile Beach, south of Lake Ainsworth Reserve (old 4WD access point), Lennox Head
- Flat Rock Reef
- Sharpes Beach (northern end of Sharpes Beach during summer when the beach is patrolled)
- Chickiba Lake (north/eastern corner surrounding the migratory and shore birds roosting area)
- Lake Ainsworth & surrounding foreshore/reserve
- Fire Trail, end Camp Drew Rd, Lennox Head
- The Serpentine
- Areas as defined under section 14 of the Companion Animals Act 1998 (NSW).
- And as indicated on Council signage in various areas.

If a person is found to allow their dog in a prohibited area they may be issued with a fine of up to \$330.

## DOG ATTACKS

**Council Rangers** have noticed an increase in the number of dog attacks being reported to and investigated by Council.

It is an offence for a dog to attack a person or animal (other than vermin). If a dog rushes at, attacks, bites, harasses or chases any person or animal (other than vermin), whether or not injury is caused to a person or animal, the owner of the dog or, if the owner is not present at the time of the offence, the person in charge of the dog at that time is guilty of an offence.

Fines may be issued by Council for a dog attack to the value of \$550 and if Court action is taken a maximum penalty of \$5500 may apply for a dog attack.

### Liability for injury or death caused by a dog

Dog owners need to be aware that as the owner of a dog that has attacked, they are liable for bodily injury to a person and damage to the personal property of a person.

The owner of a dog is also liable for damages in respect of injury (whether or not fatal) to another animal (other than vermin) caused by the dog attacking or chasing it.



For more information on companion animals management visit Council's website [www.ballina.nsw.gov.au](http://www.ballina.nsw.gov.au)



# Water talk

A community newsletter for the Ballina Shire Urban Water Management Strategy

**Did you know** that 70 percent of the Earth's surface is covered by water but less than one percent is actually drinkable?

Considering millions of people in developing countries still don't have access to fresh drinking water it seems extremely wasteful that most Australians are still using fresh drinking water in their toilets and on their lawns.

There's no reason why we cannot be recycling our waste water to a standard where it can be re-used for purposes other than drinking. Keeping it in the loop rather than treating it and wastefully pumping it out to sea makes good sense. We are already recycling products such as paper and cardboard, as well as our organic waste so why not water?

Ballina Shire Council has been working on upgrading its water treatment plants at both Lennox Head and Ballina since 2003. Recycled water will start pouring out of them late next year and will be of such high quality we will be able to use it in our toilets, on our lawns and via cold water taps to our clothes washing machines.

This is going to take pressure off our fresh water supplies as we aim that by 2026, 80% of the treated water will be re-used. This is a long term plan that Council has not gone about lightly. Council has invested around \$60 million as we're using state of the art technology that puts us firmly at the forefront of recycling water in Australia.

## Here's how the Lennox Head treatment plant works:



It's a smart and ultimately necessary move to sustain Ballina Shire and the region's water resources into the future.

## BALLINA RECYCLED WATER SCHEME

The final stage of the Urban Water Management Strategy is about to take place with the construction of the distribution and storage infrastructure commencing in January 2013.

The \$11 million contract was recently awarded to Murphy McCarthy & Associates and involves the construction of 13 kilometres of water, recycled water and sewer underground pipelines as well as water reservoirs at Ballina Heights and Lennox Head.

The project should be finished by September 2013 and will coincide with the completion of the current water treatment plant upgrades. It marks the end of a decade-long recycled water project which will provide the Ballina Shire with a sustainable water supply for the future.

## WOLLONGBAR URBAN EXPANSION AREA SEWERAGE SCHEME

The Wollongbar Urban Expansion Area Sewerage Scheme has recently been completed. The scheme provides not only existing Wollongbar residents with upgraded sewerage services but also has the potential to accommodate for future population growth along Sneaths Road, Plateau Drive and Rifle Range Road.

## URBAN STORMWATER MANAGEMENT PLAN

Council has prepared a revised Urban Stormwater Management Plan for the urban areas of the shire. It's a ten year implementation plan to improve the sustainability and amenity value of the Ballina Shire urban stormwater management systems.

Thank you to those community members who participated in the development of the Plan. Copies of the Plan can be downloaded from Council's website.



## FESTIVAL AND EVENT FUNDING PROGRAM

If you are planning a community event in 2013/14 you may be eligible for financial support under Council's Festival and Event Support Program.

There is \$25,000 available to help fund festivals and events held between July 2013 and June 2014. Each event must aim to deliver economic, social or environmental benefits and showcase the rich cultural diversity and history of the Ballina Shire.

Applications close on 15 February 2013. For more information go to [www.ballina.nsw.gov.au](http://www.ballina.nsw.gov.au) or phone Holly Archibald, Council's Events and Grants Support Officer on 6686 1457 or email [hollya@ballina.nsw.gov.au](mailto:hollya@ballina.nsw.gov.au).

**Don't  
dispose  
of me yet**

Use this issue of Community Connect to wrap kitchen waste and dispose in the green organics bin.



### A Ward



**Susan Meehan**  
Deputy Mayor  
phone 0431 685 666  
[smeehan@ballina.nsw.gov.au](mailto:smeehan@ballina.nsw.gov.au)

### B Ward



**Sharon Cadwallader**  
phone 6686 3306  
[crsharonc@nor.com.au](mailto:crsharonc@nor.com.au)

### C Ward



**Paul Worth**  
phone 0428 280 082  
[pworth@ballina.nsw.gov.au](mailto:pworth@ballina.nsw.gov.au)

### COUNCIL CONTACT INFORMATION

**Ph:** 02 6686 4444  
**Fax:** 02 6686 7035  
**Email:** [council@ballina.nsw.gov.au](mailto:council@ballina.nsw.gov.au)  
**Web:** [www.ballina.nsw.gov.au](http://www.ballina.nsw.gov.au)

**Street Address:**  
40 Cherry Street, Ballina

**Postal Address:**  
PO Box 450, Ballina 2478

**Office Hours:**  
8.15am to 4.30pm Monday  
to Friday  
(excluding public holidays)

**After hours contact:**  
02 6626 6954

**Council's Community  
Access Points:**  
Meeting agendas and  
documents on exhibition can be  
viewed at Council's Customer  
Service Centre; Alstonville,  
Ballina and Lennox Head  
Libraries; Kentwell Community  
Centre and Council's website  
[www.ballina.nsw.gov.au](http://www.ballina.nsw.gov.au)

Councillors are here to  
represent your view. You  
can contact councillors in  
person, by phone or email.

### Mayor



**David Wright**  
Mayor  
phone 0415 965 403  
[davidwright@ballina.nsw.gov.au](mailto:davidwright@ballina.nsw.gov.au)



**Robyn Hordern**  
phone 0410 562 758  
[robynh@ballina.nsw.gov.au](mailto:robynh@ballina.nsw.gov.au)



**Jeff Johnson**  
phone 0438 677 202  
[jeffjohnson@ballina.nsw.gov.au](mailto:jeffjohnson@ballina.nsw.gov.au)



**Keith Johnson**  
phone 6694 2050  
[kjohnson@ballina.nsw.gov.au](mailto:kjohnson@ballina.nsw.gov.au)



**Ken Johnston**  
phone 6681 3648  
[kenj@ballina.nsw.gov.au](mailto:kenj@ballina.nsw.gov.au)



**Keith Williams**  
phone 0418 504 644  
[keithw@ballina.nsw.gov.au](mailto:keithw@ballina.nsw.gov.au)



**Ben Smith**  
phone 0415 482 412  
[bens@ballina.nsw.gov.au](mailto:bens@ballina.nsw.gov.au)

*Council publishes public  
notices weekly and Community  
Notices on the fourth Thursday  
of the month in the Ballina  
Shire Advocate. Council  
also distributes "Community  
Connect eNews" via email on a  
regular basis, visit [www.ballina.nsw.gov.au](http://www.ballina.nsw.gov.au)  
and follow the links  
to subscribe.*