

# community connect

the newsletter of ballina shire council

inside

pool  
upgrades to  
start next  
year




scores on  
doors food  
& safety  
program



community  
events



meet a  
local



## Skullcandy Oz Grom Open Sells Out!

The organisers of the Skullcandy Oz Grom Open junior surfing competition have reported that entries to the event sold out in seven minutes!

Ballina Shire Council is a proud supporter of the event, providing seed funding as part of its Festival and Event Support Program.

*For more information see page 21 for list of upcoming events in Ballina Shire.*



## CELEBRATING WORLD ENVIRONMENT DAY

The community celebrated World Environment Day on Friday 5 June by arranging a tree planting day at Lennox Headland.

It was a great turn out by the community with local service clubs, schools and businesses all pitching in to revegetate the Lennox Headland.

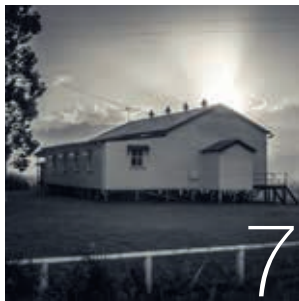
Well done Ballina Shire!

*Photos courtesy Tony Partridge*





# contents



|  |   |
|--|---|
| Alstonville and Ballina Pool upgrades to start next year       | 3 |
| Ballina Major Regional Centre Strategy                         | 4 |
| Where to get info...extreme weather conditions                 | 5 |
| Drive through flood waters, risk a fine and risk a life!       | 6 |
| New smoke free laws – outdoor dining areas                     | 6 |
| Improve Winter air quality by using your wood heater correctly | 6 |
| Calling all Ballina Shire halls                                | 7 |
| Defibrillators & sudden cardiac arrest                         | 7 |
| Straying stock   | 7 |
| Meet a local – Ako Kennedy                                     | 8 |

|   |       |
|---|-------|
| Check with Council before pruning or removing trees         | 8     |
| Keeping car parking accessible                              | 8     |
| Scores on Doors food safety and hygiene program             | 9     |
| Junior Chamber member spends a day with Council             | 9     |
| Endangered species profile – The Grey-crowned Babbler       | 10    |
| Wollongbar sports fields                                    | 10    |
| No stopping on yellow lines                                 | 10    |
| Lake Ainsworth South Eastern Precinct                       | 11    |
| Road projects   | 12    |
| Ballina to honour war horses with avenue of trees           | 13    |
| Staff profile – Dennis Bellato                              | 13    |
| Kids creative ideas will bring B-Space youth centre to life | 13    |
| Ballina Coast & Hinterland                                  | 14    |
| Latest news from Ballina Byron Gateway Airport              | 15    |
| Managing growth and change in Ballina Shire                 | 16    |
| Bag it and bin it for a healthier Ballina Shire             | 16    |
| Give Happy : Live Happy                                     | 17    |
| Environment news  | 18-19 |
| Community events  | 20-21 |
| Water Talk  | 22-23 |
| Mythbusters   | 23    |
| Waste Watch   | 24-25 |
| School holiday activities                                   | 26-27 |
| Community Spaces  | 28-29 |
| Arts Connect  | 30-31 |
| Flat Rock Tent Park   | 32    |



## from the mayor's desk

At the time of writing this column I have just witnessed two amazing local festivals – the Alstonville 150 Years Celebration Main Street Fun Day and the Love Lennox Day. Both festivals created huge crowds of young people, families and the more senior members of the Shire. The pig races at Alstonville were a huge hit and no damage was inflicted on the piglets. It was also pleasing to see the enormous numbers turn up at Lennox Head even though the weather wasn't very pleasant at times. The cafes certainly did a roaring trade on food and coffee. Neither of these festivals would have taken place without an incredible

organising committee behind them. I salute the volunteers and the businesses for their part in ensuring both events were successful. They did this with Council support but without an injection of funds.

While I congratulate those organisers and the service clubs who provided food and expertise in setting things up, I am sorry to see the demise of the Coastal Country Music Festival and the Summerland House Country Fair. Council had supported both events financially in 2014 but the incredible events, attracting thousands of people, were unable to run in 2015 because of lack of volunteers to help in the organising.

There are so many volunteers in our community with over one thousand volunteer surf life savers at our two clubs, all our rural bush fire fighters, our land care and dune care people, meals on wheels, church groups, Council ambassadors at the Northern Rivers Gallery and the Ballina Byron Gateway Airport as well as all the service clubs who perform wonderful work around the Shire raising funds for local, national and overseas causes. There are also many other volunteer



# POOL UPGRADES TO START NEXT YEAR

Great news for the community with plans being drawn up for the much-needed upgrades of the Ballina and Alstonville pools.

The work on the Ballina pool will be undertaken during the winter months next year, with Alstonville to be refurbished the following winter.

The NSW Independent Pricing and Regulatory Tribunal (IPART) recently approved Ballina Shire Council's application for a rate increase to pay for the projects.

A copy of the IPART determination, which explains the reasoning behind its decision, is available at [ipart.nsw.gov.au](http://ipart.nsw.gov.au) and [ballina.nsw.gov.au](http://ballina.nsw.gov.au)

Our consultant for this project, Ridgemill Pty Ltd, has extensive experience redeveloping public and private swimming pools including Townsville City Council's Waterways Garden Leisure Centre, Ipswich Council's Bundamba Aquatic Centre and Logan City Council's Gould Adams Aquatic Centre.

Further information about Ridgemill is available at [ridgemillprojectmanagement.com.au](http://ridgemillprojectmanagement.com.au).

For more information about the project telephone Council on 02 6686 4444.



community connect

groups including the Red Cross, the CWA, Maritime volunteers, church groups, the sporting committees, our hall committees and business chambers.

I am urging people of the community who enjoy all the major festivals and financially support the runs and walks for cancer research with donations, to reach out a little further and maybe join a group to help share the load.

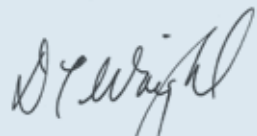
The Shire is really developing a wonderful, caring element where those in ill health or are less fortunate are supported. I am requesting for everyone, where possible, to give that extra time and skill to ensure our valuable events continue.

I would like to single out the Wardell community who attended the dedication of their new War Memorial recently. Hundreds of people attended and the performances by local Wardell, Empire Vale and Cabbage Tree Island students were of the highest calibre.

I also wish to thank my fellow Councillors and staff who have had to make some very difficult decisions lately. It is an extremely tough job in

balancing opposing views with Council and State Government policies. The amount of homework and research undertaken by each Councillor is amazing. Even if you don't always agree with Council decisions, I know that no decisions are made without proper scrutiny and thorough background research.

Finally, I recently had the opportunity to visit the new fire station at the airport as part of a thank you to our Airport Ambassadors. It is a marvellous piece of infrastructure containing three state of the art fire tenders, rescue vehicles, rescue boat, seventeen staff, operational tower and a multitude of rescue apparatus. Certainly, safety around the airport has been improved with the \$20,000,000 package funded by the Federal Government.

  
Cr David Wright



## BALLINA MAJOR REGIONAL CENTRE STRATEGY

**Ballina is expected to develop into a major regional centre over the next twenty years. So Ballina Shire Council is asking: *What kind of future does Ballina's community want?***

Over the last 18 months, Council has been gathering community input on this question through a series of workshops with community members, targeted discussions with community and industry groups and via local media and the web. From this first stage of community input, we have developed a set of *Strategic Question Sheets* which outline the community's aspirations and ideas for the future. This is supported by a *Background Paper* detailing Ballina's future opportunities and challenges and a number of *Technical Studies* that have helped to inform the project.

Council will be looking for feedback on this material from the broader community over the next few months. Based on this feedback, Council will be preparing the '*Ballina Major Regional Centre Strategy*' to guide Ballina's future in the direction desired by the community. Please keep an eye out for the community engagement package and let Council know what you think.

The Ballina Major Regional Centre Strategy project has involved regular meetings with a 'Civic Panel', a diverse group of fourteen members of our community who have come together on a regular basis to provide the project team with feedback on the direction of the project and draft material. Several of our Civic Panel members are profiled below.

### SUSAN HENNESSEY



***Tell us a bit about yourself:*** I am a retired older citizen who likes to be active and involved. I have 3 children and 6 grandchildren who don't live here but come here most holidays. I worked in public education for 35 years.

***How long have you lived here?*** 22 years.

***Where do you live (generally)?*** East Ballina – Angels Beach.

***Why did you become involved with the Panel?*** The future development of Ballina as a vibrant coastal community is very important to me. I really believe that a person should be involved in the 'design' of the future – if you don't contribute you cannot influence.

***Where do you see Ballina in 20 years? Do you see yourself in Ballina then?*** As a vibrant, regional centre – where people want to live and work. Yes, I would like to still be in Ballina in 20 years time.

***What's your favourite thing about Ballina?*** Its natural beauty and the friendliness of the people.

***And your least favourite thing?*** The CBD being like a wasteland on Sundays!! The vacant shops in the CBD and elsewhere.

***What BMRCs question do you most relate to or are most interested in, and why?*** How can we bring more life and vibrancy to the CBD?

### JAN AITKEN



***Tell us a bit about yourself:*** We came from Geelong in 1992 and started a macadamia farm in Uralba. I have 2 children and 5 grandkids. Presently involved in palliative care (15 years), Paradise FM weekly segment on Alstonville news and Ballina Airport Ambassador.

***How long have you lived here?*** 23 years.

***Where do you live (generally)?*** Uralba

***Why did you become involved with the Panel?*** Accepted invitation to see what it was all about and it all interested me.

***Where do you see Ballina in 20 years? Do you see yourself in Ballina then?*** Hope Ballina keeps moving forward with what people really want. An option for me would be a gated venue.

***What's your favourite thing about Ballina?*** Sunset from the river and taking grandkids to see the prawn trawlers. River Street, coffee shops and friendly people!

***And your least favourite thing?*** Parking main shopping area. More shaded parking.

***What BMRCs question do you most relate to or are most interested in, and why?*** Tourism, housing and new civic centre for large functions. New information centre. Sunday markets on the river and main street.

### JULIE HALVORSEN



***Tell us a bit about yourself:*** Married, 3 adult married children, 3 3/4 grandchildren! Enjoy photography, meeting people and time with family & friends.

***How long have you lived here?*** Moved to Ballina in 1981 – so that makes it 34 years this year.

***Where do you live (generally)?*** Banyanda Estate

***Why did you become involved with the Panel?*** Followed on from reading a letter from Council and attending a Civic community night at Ballina RSL

***Where do you see Ballina in 20 years? Do you see yourself in Ballina then?*** 20 years on Ballina will be a safe, unspoiled and sought after town where all ages can flourish and call home! Yes, I absolutely want to be here!

***What's your favourite thing about Ballina?*** I appreciate that Ballina hasn't tried to copy another town or atmosphere – I think we are still discovering who we are and are honest about that. I admire that people try new ideas – some things don't take or work out, but we have a go.

***And your least favourite thing?*** The really wet climate as it does spoil a lot of events and messes with sport and recreation – people save to come for holidays and catching up over Easter etc., and it can be rained out so easily.





## ALEX ARRIGHI



**Tell us a bit about yourself:** Born in Sydney, educated Canterbury Boys High School. Moved to Brisbane with employment (John Fairfax). After 14 years in Brisbane moved to Ballina to take over a newsagency. Sold out after 16 years in the business. I have 2 children. Involved in Rotary and awarded Paul Harris Fellowship. Was President of Ballina – on –

Richmond Rotary Club. Also first President of Ballina Rugby Club. Also President of Far North Coast Rugby for 2 years.

**How long have you lived here?** Since 1968

**Where do you live (generally)?** In town now after 15 years at Pimlico


**Why did you become involved with the Panel?** To pass on any benefits of years in business and activities in community affairs.

**Where do you see Ballina in 20 years? Do you see yourself in Ballina then?** I won't be here in 20 years but I do envisage Ballina becoming the centre of a thriving North Coast Region.

**What's your favourite thing about Ballina?** Its proximity to water sports i.e. surf and river activities. I do believe we have been fortunate to have had far-sighted Councils and employees. The development of the Airport has been of great benefit to the town and surrounds.

**And your least favourite thing?** Small interest groups pushing their own views on to the community with scant regard for the rights and beliefs of others. I am most interested in seeing Ballina develop in an orderly and meaningful fashion.

## Get Involved

- **PHONE** the project team on 02 6686 1284
- **EMAIL** [BMRCs@ballina.nsw.gov.au](mailto:BMRCs@ballina.nsw.gov.au)
- Make a **WRITTEN SUBMISSION** to:  
The General Manager  
Ballina Shire Council  
PO Box 450  
BALLINA NSW 2478
-  Share **PHOTOS** that show things about Ballina that **you like, would like to see, or would like to change**, using the Instagram hashtag **#ballinafuture**.
- **MAP** your vision of Ballina's future using sMap.  
To download visit [ballina.nsw.gov.au/BMRCs](http://ballina.nsw.gov.au/BMRCs)
- **VISIT THE WEBSITE** for information and regular updates at [ballina.nsw.gov.au/BMRCs](http://ballina.nsw.gov.au/BMRCs)

*Council is keen to hear from you now so your views can be considered in preparing the strategy during 2015.*

## Where to get info... **EXTREME WEATHER CONDITIONS**



### ROAD CLOSURES

[myroadinfo.com.au](http://myroadinfo.com.au) for Ballina Shire rural road info  
[livetraffic.com](http://livetraffic.com) for highway and major arterial road info

### RADIO STATIONS

- Paradise FM 101.9
- ABC North Coast 94.5
- 2LM 104.3
- ZZZ FM 100.9

### FIELD CLOSURES

24-hour hotline 02 6686 1499  
(recorded messages from individual sporting clubs).

### WEATHER CONDITIONS

[bom.gov.au](http://bom.gov.au) Bureau of Meteorology

### BALLINA BYRON GATEWAY AIRPORT

Your local airline for flights to and from Ballina:

**Rex** 13 17 13 or 02 6686 8140

[rex.com.au](http://rex.com.au)

**Jet Star** 13 15 38 or 02 6686 8385

[jetstar.com.au](http://jetstar.com.au)

**Virgin Australia** 13 67 89 or 02 6686 7664

[virginaustralia.com.au](http://virginaustralia.com.au)

### ACTIONS TO TAKE

- Alerts are issued via Council's website [ballina.nsw.gov.au](http://ballina.nsw.gov.au) or emergency updates via your local radio station.
- Delay any unnecessary travel until conditions have cleared.
- Look out for your neighbours
- If water is overflowing street stormwater drains, refrain from using internal water eg: washing machines, dishwashers, baths, showers and flushing of toilets until the water has cleared.
- Watch for Council, SES and other State Government agency updates.

### KEY CONTACT NUMBERS

- **SES** 13 25 00
- **Ballina Shire Council**  
02 6686 4444  
or **emergency after hours** 02 6626 6954
- **Emergency Services**  
Police, Ambulance, Fire Brigade 000





## DRIVE THROUGH FLOOD WATERS, RISK A FINE AND RISK A LIFE!

The heavy rain in May saw police issuing cautions to drivers who ignored signs and directions indicating roads were closed because of flooding.

Police have advised they will be taking a 'no tolerance' approach to this issue during future severe weather events saying ignoring road signs not only puts the driver at risk, but also endangers the people who rescue them.

Those ignoring road closures risk fines of more than \$200 and a loss of 2 demerit points.

*Photos courtesy Tony Partridge*



## PATIO HEATERS

**+ 50 kg**  
CO<sub>2</sub> per year

A propane patio heater is one of the most inefficient appliances in existence. A single canister with a heat output of 12.5 kW will produce around 32 kg of CO<sub>2</sub>, before it runs out. This is equivalent to the energy required to produce approximately 5200 cups of tea.

## NEW SMOKE FREE LAWS IN OUTDOOR DINING AREAS

**Smoking will be banned in outdoor dining areas of licensed premises, restaurants and cafes in NSW from 6 July 2015.**

The current laws already ban smoking in enclosed areas of public spaces in NSW. The new law extends the ban to within four metres of entries or exits from public buildings and within four metres of outdoor dining areas of cafes, restaurants, pubs and clubs.

The ban will also extend to areas within 10m of a food fair stall preparing or serving food. This will have implications for weekend markets and local events.

NSW Health has recently distributed letters to hospitality businesses throughout NSW to notify them of the new 'four metre law'. NSW Health will also be responsible for enforcing the laws.

Visit NSW Health's website [health.nsw.gov.au/smokefree](http://health.nsw.gov.au/smokefree) or telephone Public and Environmental Health Section on 02 6686 1210.



## Improve Winter Air Quality by Using Your Wood Heater Correctly

**There's something about a cosy wood fire on a cold night isn't there?**

Unfortunately the incorrect use of wood heaters can generate excessive smoke which can have an impact on air quality and your neighbours.

Here are some of the ways you can reduce smoke from your wood fire.

- Always burn small logs of aged, dry hardwood. Unseasoned wood has more moisture which makes a heater smoke.
- Store wood under cover in a dry, ventilated area.
- Use plenty of dry kindling to establish a good fire quickly.
- Never burn rubbish, treated or painted wood as this can pollute the air and can be poisonous.
- Keep the flame lively and bright. Your fire should only smoke for a few minutes when you first light it and when you add extra fuel.
- Don't let your wood heater smoulder overnight. Keep enough air in the fire to maintain a flame.
- Check your chimney or flue regularly. If there is smoke coming from the chimney increase the air supply to your fire.
- Check your heater complies with Australian Standard 4013:1999.

For further information telephone Council's Public and Environmental Health Section on 02 6686 1210.







## Calling all *Ballina Shire Halls*

**Nominate a hall in the Ballina Shire for a chance to be involved in a multi-arts project celebrating community halls of the Northern Rivers!**

They've been the site of first kisses, first dances, broken hearts and celebrations; Northern Rivers halls are places of stories and keepers of secrets.

If These Halls Could Talk is a region-wide project run by Arts Northern Rivers, celebrating halls and the role they play in our communities. The project invites people to nominate their local hall for a chance to be involved in the project.

Seven halls from across the Northern Rivers will be selected to have a renowned creative team collaborate with their community to create a site-specific work inspired by the unique narrative of their hall.

Nominate your hall at [ifthesehallscouldtalk.com.au](http://ifthesehallscouldtalk.com.au)



## Defibrillators & Sudden Cardiac Arrest

**Each year, sudden cardiac arrest (SCA) strikes approximately 30,000 Australians. Unfortunately, fewer than 5% survive, often because help cannot reach them in time.**

Did you know that there are defibrillators in various locations in the Ballina Shire?

A defibrillator is a life-saving device used to treat a sudden cardiac arrest, a condition that occurs when the heart unexpectedly stops pumping. The defibrillator analyses the heart rhythm and recognises abnormalities. The machine will decide whether a shock is required to be delivered to the casualty or not. A defibrillator is commonly known as an AED (automated external defibrillator) or a 'defib'.

Defibrillators are easy to use in times of emergency and you do not need any training.

### **Defibrillators are installed at the following locations:**

- Ballina Fair Shopping Centre  
Opposite Centre Management  
(near Best & Less)
- Lennox Head – LE-BA Surfboardriders Club  
(Roving with Boardriders at all competitions)
- Wigmore Arcade  
107 River Street, Ballina
- IGA Lennox Head  
80 – 84 Ballina Street, Lennox Head
- Council's Customer Service Centre  
40 Cherry Street, Ballina
- Ballina Byron Gateway Airport  
Southern Cross Drive, Ballina
- Ballina Memorial Pool
- Alstonville Pool

*Disclaimer – This may not be a complete list of defibrillators in the Ballina Shire, and Council cannot be held responsible for their maintenance. Always, in the event of an emergency, call triple zero (000) immediately.*

## STRAYING STOCK

**Stock owners are reminded to check their fencing is adequate to keep their animals from straying onto public land.**

Straying stock can cause serious accidents on our roads.





## meet a local

### Ako Kennedy



#### Whether residents have lived in Ballina Shire all their lives or are new to the area, most have a story to tell.

Ako has lived in Ballina for the past seven years after she relocated from Wellington, NSW. She now lives with her husband Peter and her young daughter, May. Ako grew up in the regional city called Nagaoka in Japan, located north-west of Tokyo. Since Ako moved to Ballina, she has been in closer contact with other members of the local Japanese community. Ako works in Ballina Fox Street Pre-School as a pre-school teacher. She is also studying a Diploma in Early Childhood Education and Care at Wollongbar TAFE.

Ako most values the way the community in Ballina Shire accepts people of different cultural backgrounds and she has a sense of belonging in the community.

The biggest change Ako has seen in Ballina has been the refurbishment and relocation of the Big Prawn. When she first moved to Ballina she thought that the prawn looked very sad. Now she thinks it looks fresh and has created a reason for many people to stop in Ballina. Even her parents, when visiting from Japan this year, commented on how good it now looked.

If there was one thing that Ako could change in the Ballina Shire she said it would be great if young children had somewhere to go and play. Ballina has plenty of options for outdoor activities but not so many when the weather isn't good. From her experience as a young mum, she said that she knows it can be pretty stressful for both children and parents when they are stuck at home for several days. In her hometown in Japan they have an indoor playground, mini-library, and community centre where they hold parenting courses and singing sessions organised by the city council. She said it would be nice to see such facilities in Ballina Shire too.



## Check with Council before pruning or removing trees

If you are thinking about pruning or removing trees from your property check with Council before you start work. Ballina Shire Council's Local Environmental Plan 2012 requires consent for the pruning or removal of trees and vegetation on land in an urban zone. These requirements are:

- Any tree (either native or non-native) with a height of 6 metres or greater
- Any tree of the species *Pandanus tectorius* (Screw Pine) with a height of 3 metres or greater in the localities of East Ballina, Lennox Head or Skennars Head
- Any vegetation located on land identified as Significant Urban Bushland
- Any tree with a height of 3 metres or greater located on land containing an item of Environmental Heritage.

There are exemptions for some weed species or other trees identified as undesirable in the Shire, minor pruning works or if the tree is close to a permanent building or structure.

For more information telephone Council's Planning Section on telephone 02 6686 1254

## KEEP CAR PARKING ACCESSIBLE

Ballina Shire has many accessible car parking spots for people with disabilities and some shopping centres now have pram-friendly spaces for people with young children.

Please do not use these spaces if you are not a person who has problems with mobility.







# Ballina Shire Council values the Scores on Doors food safety and hygiene program



Keep an eye out for the purple and green posters on display at some of our local cafés and restaurants. It's a sign of their participation in the NSW "Scores on Doors" hygiene and food safety-rating program.

Ballina Shire Council is proud to participate, as it gives information about hygiene standards to help people make an informed choice about where to eat or shop for food.

Our council officers regularly inspect local food businesses and rate their compliance with food safety standards, which is then published for display in the business' window.

The inspection includes food temperature control, food prepared in advance of service, food handler hygiene, cleaning and sanitisation and pest control.

Participation in "Scores on Doors" means that local businesses are striving to show members of the public that hygiene and food safety are of the highest standard.

We're lucky to enjoy a fantastic range of quality restaurants in the Ballina Shire and we encourage you to support our local businesses taking part in the program.

- |                                    |                            |                               |
|------------------------------------|----------------------------|-------------------------------|
| Adrienne's Café                    | Coffee Space               | Ocean View Café               |
| Alstonville Bakery & Café          | Dominoes Pizza             | One Stop Shop                 |
| Alstonville Plaza Chinese Takeaway | ESP Espresso               | Options in Alstonville        |
| Baker's Delight                    | Fishy Fishy                | Oriental Pearl Restaurant     |
| Ballina Byron Motor Inn            | Freewave Sushi and Burgers | Pancho Villa                  |
| Ballina Manor                      | Groovers Café              | Pioneer Tavern                |
| Ballina Pool & Waterslides         | Healthy Noodle Bar         | Pipers                        |
| Ballina TAFE Pathways              | Hoi Shing Restaurant       | Ploy Thai                     |
| Ballina Ten Pin Bowl               | Indo Indian Cuisine        | Raamons Pizza                 |
| Ballina's Indian Kitchen           | Integria Health Café       | Racecourse Café               |
| Baskin Robbins                     | Iwok                       | Rakuu                         |
| BP Big Pineapple                   | Jordans Farm               | Russelton Takeaway            |
| BP North Ballina                   | Juice it Up                | Seagrass Greengrocer          |
| BP Wardell                         | Kezbah Café                | Snowy's Hot Bread Kitchen     |
| Brumby's                           | Lennox Gelato & Coffee Co  | Thai By Night                 |
| Bunga Raya Restaurant              | Lennox Pizza & Pasta       | That New Coffee Shop          |
| Bunnings Café                      | Lime Lennox                | The Lazy Chicken              |
| Café 53                            | Macadamia Castle           | The Point Lennox              |
| Café Sebastian                     | Martin's Hot Bread Kitchen | Tooti Frooti Fashion House    |
| Café Sirocco                       | McDonalds Restaurant       | Viva Pizza                    |
| Café Swish                         | Mexican Del Rio            | Wardell Café & Takeaway       |
| Coastal Café                       | Mi Thai Restaurant         | Wollongbar Chinese Restaurant |
| Coffee Club                        | Nightcap Restaurant        | Wollongbar TAFE Cafeteria     |

This list is complete as at 29 May 2015. For more information on Scores on Doors and participating food outlets visit [ballina.nsw.gov.au](http://ballina.nsw.gov.au) or contact Sue Anderson at Ballina Shire Council on telephone 02 6686 4444.

# JUNIOR CHAMBER MEMBER SPENDS A DAY WITH COUNCIL



Ballina Shire Council recently had the great pleasure of welcoming 16-year-old Southern Cross K-12 school student Haley Carter to our workforce for a day. Haley is a member of the Ballina Junior Chamber of Commerce.

In a fundraiser for the Cancer Council, the Junior Chamber of Commerce auctioned their working abilities to local businesses. Ballina Shire Council was lucky enough to secure Haley who spent her day with our Community Facilities Team.

Haley was involved in event planning and preparation, liaising with community members and attending the new B-Space launch at the Swift Street Youth Centre.

Haley said she enjoyed her day so much she hopes to return to the Community Facilities Team for her Year 10 Work Experience week.

"It was great to see what it is like to have a full time job and I now have some ideas on new ways to help the community," Haley said.

Haley is interested in volunteering, education and helping others and hopes to have a career in line with these interests. She is also trying to fundraise for a trip over the summer holidays to volunteer in primary schools in Fiji. She plans on having a garage sale to raise money to sponsor this trip.

community connect



## endangered species profile

In this newsletter, we are beginning a new section on threatened birds, plants and animals that live in the Ballina Shire. The Office of Environment and Heritage estimates that in the Ballina Shire only 20% of our original vegetation remains.

Ballina Shire is however holding its own in supporting threatened species and this new series will highlight a new species in each edition.

*If there is a particular animal or plant you'd like to see profiled, or you have information that would be scientifically useful, please don't hesitate to telephone Ballina Shire Council on 02 6686 4444.*

### The Grey-crowned Babbler



Photos courtesy Simon Bennett AustralAvianImages

The Grey-crowned Babbler is, as far as birds go, a good-looking bird with a great call. The call is known as 'antiphonal' meaning that it is given by two birds almost in unison. The first part of the call is 'ya', given by the female, followed by a 'hoo' given by the male. It is so closely co-ordinated that the call sounds as though it is being given by a single bird and it can be repeated up to 23 times.

It likes to live in family groups, with roost-nests and brood-nests built co-operatively by the whole group. Mothers and babies are looked after by everyone in the family group.

In our Shire, Grey-crowned Babblers live mostly in the south-western part of the Shire in the vegetated areas around Bagotville and Meerschaum Vale. Research has shown that Babblers and people can live together, as these birds don't mind mown lawns and slashed grass as long as there is also suitable ground with leaf litter, rotting logs and branches and mulched gardens. Their primary diet of insects lives in these locations.

They are vulnerable on roads, and also to cats. The main threat to their ongoing survival is however the clearing of their habitat.

## Wollongbar Sports Fields

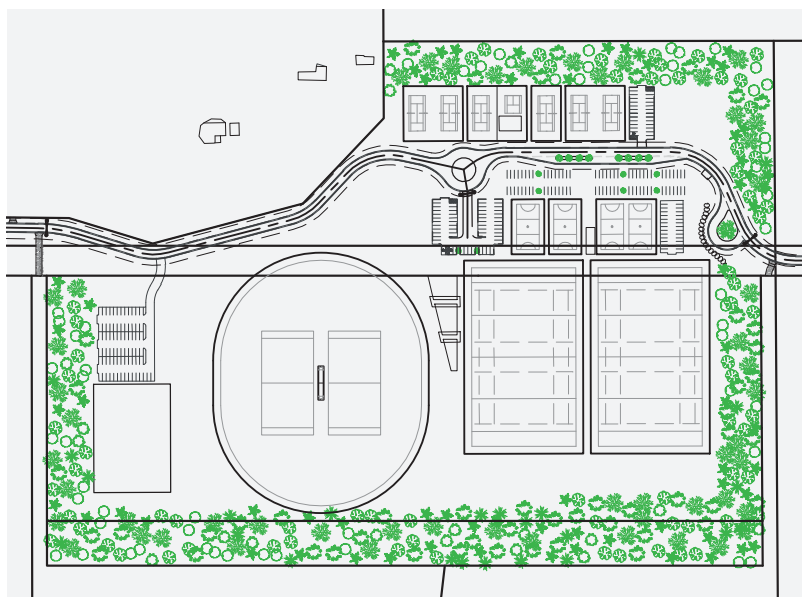
**Construction of the new sports fields at Wollongbar is now underway.**

Council awarded the tender to Synergy Resource Management, which will build AFL and rugby fields, a cricket oval, tennis courts, netball courts, lighting and clubhouse facilities over 13 hectares.

The total estimated cost of the project is close to \$7 million with \$4.5 million coming from the Federal Government's Building Better Regional Cities (BBRC) program. Council will contribute the difference from its commercial property reserves using funds generated through Council's property development activities.

The Wollongbar Urban Expansion Area is one of the main residential development areas planned for Ballina Shire, with 79 hectares of residential zoned land on the north-western edge of the existing village. When fully developed it will provide housing for approximately 2,500 people.

For further information visit [ballina.nsw.gov.au](http://ballina.nsw.gov.au)



## NO STOPPING ON YELLOW LINES

Council is reducing the number of regulatory parking signs and distractions on our roads. As part of this initiative you may notice painted yellow lines along the edge of the road instead of NO STOPPING signs.

Under NSW Road Rule 169 a continuous or unbroken yellow line along the edge of the road means 'NO STOPPING'.

So don't stop for any reason except for a medical or similar emergency.

Stopping at this line could cost you \$242.







community connect

**The long-term health of Lake Ainsworth has been investigated and discussed for many years with some sections of the community particularly concerned about the impact of run-off from the eastern road between the lake and the ocean.**

To address these concerns, after extensive community consultation, the eastern road access to the Lake Ainsworth Sport and Recreation Centre will eventually be closed. The road on the southern side of the lake, opposite the surf club, will also close as a through road to Camp Drewe.

Council is looking at building a new access road around the western side of the Lake Ainsworth Caravan Park, and we are now working with NSW Crown Lands, which owns the land, to see if they will support this proposal.

The other road option is to upgrade a Council-owned road reserve through the caravan park, but this is not seen as ideal because we prefer to minimise any impact on the park.

We realise people will be concerned about future parking and we will build new spaces to compensate for the loss of parking before the eastern road is closed.

Council has set aside just over \$1.4 million for this project which also includes \$100,000 for planning for the replacement of the Lennox Head Alstonville Surf Lifesaving Club, which is in the Lake Ainsworth precinct.

Consultants have recommended demolishing and rebuilding the surf club as it will provide the best long-term benefit to the community.

The money in this budget will allow for further consultation with the community about a new surf club building as well as provide for

architectural drawings and supporting information to be completed to allow a development application to be lodged.

This will allow Council to lobby the NSW and Federal Governments for money to build the new surf club.

| DESCRIPTION  | AMOUNT (\$)      |
|--|------------------|
| <b>CONSTRUCTION</b>  |                  |
| Ross Street Road Works – Formalise Parking and Road Capacity   | 286,000          |
| Pacific Parade Road Works  | 50,000           |
| Offset Car parking, drainage and related works   | 587,000          |
| Eastern Road closure including drainage, landscaping and the use of pervious pavers for emergency access | 350,000          |
| <b>SUB TOTAL</b>   | <b>1,273,000</b> |
| <b>DESIGN/DEVELOPMENT</b>  |                  |
| Lake Ainsworth Precinct – Stage 2 (DA/Approvals)   | 50,000           |
| New Surf Club Development – Stage 2 (DA/Approvals)   | 100,000          |
| <b>TOTAL</b>   | <b>1,423,000</b> |
| <b>COUNCIL BUDGET</b>  | <b>1,436,000</b> |
| <b>BALANCE (CONTINGENCY)</b>   | <b>13,000</b>    |





# road projects

| Projects completed                        |  |
|---|--|
| <b>RIVER STREET</b>                       | Pavement reconstruction between Grant and Kerr Streets – completed.  |
| <b>ROUNDAABOUT</b>                        | Tamar / Cherry Street – completed.   |
| <b>PIMLICO ROAD</b>                       | Pavement reconstruction – second stage due for completion June 2015.   |
| <b>URALBA ROAD</b>                        | Pavement reconstruction – second stage due for completion June 2015.   |
| Projects underway or due to commence soon |  |
| <b>ROUNDAABOUT</b>                        | Moon Street / River Street. Road and drainage works nearing completion including roundabout reconstruction. New paving works consistent with CBD due for completion August 2015. |
| <b>WINTON LANE, BALLINA</b>               | Shared zone improvements to complement Wigmore Arcade upgrade – Works due to be completed by July.   |
| <b>COASTAL SHARED PATH (WEST)</b>         | North Creek Road from Tara Downs to Amber Drive. Works currently underway, due to be completed by August 2015.   |
| <b>COASTAL SHARED PATH (EAST)</b>         | Angels Beach to Sharpes Beach. Pre-construction works are ongoing. Construction to commence following completion of North Creek Road section of path.                            |

A shared path from the Angels Beach underpass to Flat Rock carpark and then through to the Sharpes Beach underpass.

A coastal walk from the Sharpes Beach underpass, built to National Parks and Wildlife standards, largely along the existing walking track through Boulder Beach and up to Pat Morton carpark.

A shared path from North Angels Beach, along the western side of The Coast Road to Sharpes Beach underpass.

A shared path from the Skennars Head / Headlands Drive intersection turning left along Skennars Head Road and then turning right up North Creek Road to Amber Drive.

A shared path from the Skennars Head / Headlands Drive intersection turning right along Skennars Head Road then turning left up the western side of The Coast Road, before crossing The Coast Road to connect to the Pat Morton Carpark.

Existing shared path



Copyright: Land & Property Information 2014.





## Ballina to honour war horses with avenue of trees

**An avenue of trees will be planted in River Street Ballina to commemorate the role Australian horses played in World War 1.**

The \$8000 project will be funded by the Federal Government. It will be known as "Walers Way" and follows a motion from Cr Sue Meehan last September to apply for the funding after the idea was suggested by local residents Maurice Lewis and John Hayter.

The Waler is an Australian breed of riding horse that developed from the horses that were brought to the Australian colonies in the 19th century.

The name comes from their early breeding origins in New South Wales; they were originally known as New South Walers.

For their sheer strength, size and endurance, they were widely considered to be the best horses for tough conditions.

Of the 160,000 Walers sent overseas during World War 1, only one is said to have returned.

Many of the horses were with the 4th and 12th Regiments of the Aussie troops at the Battle of Beersheba in the Middle East.

The Member for Page, Kevin Hogan, said it was a wonderful idea to mark the Centenary of Anzac.

*Image courtesy Waler Horse Owners and Breeders Association*



## KIDS CREATIVE IDEAS WILL BRING B-SPACE YOUTH CENTRE TO LIFE



**Young people are always full of great ideas and we want to hear them. The Ballina Youth Centre (AKA B-Space) needs a makeover and young people are invited to take part in the Inspiring Challenge program which is a competition to design parts of the youth centre.**

The aim of the program is to transform the youth centre into a thriving hub; one that is fun, vibrant, innovative and empowering; a place where young people from all

walks of life want to be; a place they created.

FSG Australia is working with another organisation, Third and Public, on the project and they are running a competition to get young people's designs for a range of things including the interior and gardens as well as conceptual ideas for activities that young people would like to participate in.

There are some awesome prizes being offered! The closing date for entries is the 21 August 2015 with judging to take place in September. The plan is to open the refurbished youth centre early next year.

To take part in the B-SPACE project visit [inspiringchangechallenge.com/register](http://inspiringchangechallenge.com/register) or email [michellesh@fsg.org.au](mailto:michellesh@fsg.org.au).

Follow B-SPACE on Facebook and Instagram @inspiringchangechallenge #ballinaspace

B-Space is an important service for our Shire's young people. This year B-Space mentors will work with around 1,000 young people (aged between 11 – 24).



### dennis bellato

**Where were you born and raised?** I was born in Guildford, Sydney and spent my teenage years in Western Australia before moving to the NSW North Coast about 25 years ago when my children were very young.

**How long with Ballina Shire Council and current role?**

I've been with Council for 21 years and currently work as a Maintenance Supervisor. Our crew maintain the roads, footpaths and stormwater infrastructure.

**A favourite aspect of your role with Council?** I like the work crew, the friendships you form and the different personalities I work with. We work hard but we also have a great sense of humour – which helps!

**What is one message you would like to get out to the public?** I guess one message that I would like the public to take notice of is road closures... particularly in wet weather. If there is water over the road and the road is closed – don't drive through it! Our crews work around the clock, and in treacherous conditions to inspect rural roads to make sure they are safe to drive on. If they are unsafe we close them .... But it's amazing to see the number of drivers that ignore the signs we put out and just drive through floodwater. They are not only damaging their vehicles and the road surface but they are risking their lives, the lives of their passengers and the lives of emergency personnel who have to rescue them.

**We've been asking our community a series of short questions to help prepare the Ballina Major Regional Strategy (see page 4 for more information). What do you like about Ballina, what would you like to change or what would you like to stay?** I like Ballina Shire the way it is. I realise that people will move here and the population will grow, but I'd like the small town feeling to remain. We do need more car parking, but definitely no high-rise buildings.

**What do you do in your spare time?** In my spare time I surf a bit and am a member of the Le-Ba Boardriders. We have the SkullCandy Oz Grom Open coming up in early July. We have an extremely hardworking committee including Jonathon Hewitt, Paul Snellgrove, Tony O'Brien, Steve Condon and strong sponsors in SkullCandy and Cool Ridge. The sponsors and the grand band of committee members plus all the people behind the scenes including the mums and dads all get involved to bring the SkullCandy Oz Grom Open to life and provide a great event for the kids.

This year we will crown the new Australian Pro Junior. This is a big deal for Lennox Head and Ballina Shire, offering the largest in prize money of any such event, and drawing international attention.



## ballina coast & hinterland

### The state of the visitor economy

**Ballina was in the spotlight recently when State and North Coast regional tourism representatives visited the Shire to talk to industry operators about opportunities available to them.**

Tom Urban from Destination NSW spoke about funding opportunities through the Regional Visitor Economy Fund and the Regional Flagship Events Program which has \$3.5 million available for projects aimed at doubling overnight visitor expenditure.

Belinda Novicky, CEO of the North Coast Destination Network discussed one of Australia's largest and most ambitious tourism industry cooperative campaigns – The Legendary Pacific Coast – which takes in the Ballina Shire and now has more social media followers than the Great Ocean Road.

Ballina Tourism staff presented our Destination Management Plan which looks at the future direction of tourism in the Shire.

*For more information on how to be involved telephone the Ballina Visitor Information Centre on 02 6686 3484.*



*Photo courtesy Sean Tierney North Coast Institute of TAFE NSW*

### VISITOR CENTRE ACTS AS A LEARNING ENVIRONMENT FOR LOCAL STUDENTS

**TAFE Tourism students got a taste of what awaits them when they finish their studies when they toured the Ballina Visitor Information Centre recently.**

The 10 students, who are studying for their Tourism Certificate, arrived at the same time as a coach-load of 55 people who were making reservations for a cruise on the Richmond River and asking all sorts of other questions as well.

Staff were able to give students an insight into operations at the Visitor Information Centre.

Students were amazed to hear the Visitor Information Centre receives 60,000 enquiries every year!

### Ballina Shire businesses receive first dibs on sell-out display stand

**If you are looking for a way to promote your business perhaps a display stand at the Ballina Byron Gateway Airport is what you need.**

The display stands are in the arrivals terminal and are a great way of targeting your advertising. There are more than 450,000 passenger movements a year through the airport, compared to 327,900 in 2011.

The stands are managed by Ballina Visitor Information Centre and volunteer Tourism Ambassadors are on hand to meet the planes and they make sure the brochures are replenished twice a day.

The display stands are excellent value for money and local businesses receive the first option to reserve a space for six months.

*For more information telephone the Ballina Visitor Information Centre on 02 6686 3484.*







## LATEST NEWS FROM *ballina byron* gateway airport

### LOCAL EMERGENCY SERVICES PUT TO THE TEST IN 'SKIDDING' EXERCISE

There was plenty of drama at the Ballina Byron Gateway Airport in May when emergency services were put through their paces as part of an emergency training exercise.

A school bus was used to simulate a crashed aircraft with volunteers from Wollongbar TAFE and the Ballina Visitor Information Centre pretending to be passengers who had varying injuries.

Police Inspector Bill McKenna was the head of the command post and coordinated staff from emergency services including the Police, Rural Fire Service, NSW Fire Brigade and Rescue, the Australian Red Cross and the Aviation Rescue and Fire Fighting Service which is now based at the airport.

It was a chance to test the Ballina Aerodrome Emergency Plan and from all reports the response and actions from the emergency services were excellent.



### Fly local...

Want to support a local? Then fly with us! The more travellers who support the airport, the more growth we can demonstrate to airline partners so we can grow flight services for locals, the business community and the economy.



### Airport Volunteers get familiar with the Aviation Rescue and Fire Fighting Service

In June this year, Council's Volunteer Airport Ambassadors got a behind the scenes tour of the new Aviation Rescue and Fire Fighting facility at the Ballina Byron Gateway Airport. The tour included a visit to the Control Tower and a demonstration of the new Fire Rescue Trucks. Thanks to the dedicated crew who took the time to showcase this wonderful new facility, it certainly is an impressive piece of infrastructure!

### More long-term parking for passengers

There is now more parking available at the Ballina Byron Gateway Airport with the opening of a new long-stay car park.

There are an additional 143 carparking spaces with 34 bays undercover. Rates are still only \$14 overnight.

### Departures

| Departs | Airline | Destination | Arrives |
|---------|---------|-------------|---------|
| 06:30   | REX     | SYDNEY      | 08:20   |
| 09:10   | JETSTAR | SYDNEY      | 10:35   |
| 11:05   | JETSTAR | MELBOURNE   | 13:15   |
| 11:55   | REX     | NEWCASTLE   | 13:15   |
|         |         | SYDNEY      | 14:20   |
| 16:00   | VIRGIN  | SYDNEY      | 17:25   |
| 16:50   | JETSTAR | SYDNEY      | 18:15   |

Please note that flight schedules are subject to change.

Now up to 58 flights per week.



[www.ballinabyronairport.com.au](http://www.ballinabyronairport.com.au)





## MANAGING GROWTH AND CHANGE IN BALLINA SHIRE – THE PLANNING RESPONSE

Planning for future housing and employment in the Ballina Shire is guided by a series of plans. The key planning documents that guide Council's decision making are:

**FAR NORTH COAST REGIONAL STRATEGY:** The Far North Coast Regional Strategy (FNCRS) is the State Government's plan for the Far North Coast. It sets out a vision for the region and identifies outcomes and actions relating to settlement and housing, the environment and employment. The NSW Government is currently preparing a new Regional Growth Plan to replace the FNCRS.

**BALLINA SHIRE LOCAL GROWTH MANAGEMENT STRATEGY:** The Local Growth Management Strategy (LGMS) is Council's local strategic planning policy for residential, commercial and industrial land use activity in the Ballina Shire. The LGMS sets out how Council will manage growth over 20 years. Council's LGMS includes specific consideration of the character and special qualities of each urban locality and identifies a series of strategic actions to support long-term planning decisions in the Shire.

**PLACE BASED PLANS:** Council has a program for the preparation of strategic plans at a local level throughout the Shire. Local strategic plans are in place for Wardell, Lennox Head and Cumbalum. The planning framework for the Alstonville Plateau was extensively reviewed in the early 2000s through the 3rd village project. Council is currently preparing a comprehensive strategic plan for Ballina (including East Ballina and West Ballina) through the Ballina Major Regional Centre Strategy. The strategic plan for Wardell will be reviewed this year.

These plans identify key the specific local characteristics of places in the Shire and are developed with considerable input from communities.

**LOCAL ENVIRONMENTAL PLAN AND DEVELOPMENT CONTROL PLAN:** The Local Environmental Plans (LEPs) and the Development Control Plan (DCP) direct and guide the way in which development occurs. The LEPs and DCP set out the local 'rules' for development. That is, these plans identify types of development that can occur and how such development can be undertaken.

### FAR NORTH COAST REGIONAL STRATEGY

State Government Planning Policy

### LOCAL GROWTH MANAGEMENT STRATEGY

Local Planning Policy

### PLACE BASED PLANNING

Local Community Based  
Strategic Plans

### LEPs AND DCP

Regulatory Controls



## Bag it and bin it for a healthier Ballina Shire

Thanks to all the responsible dog owners who are cleaning up after their pooches. We've tried to make it easy for you by installing poo bag dispensers at the following locations:

- The Spit near carpark near the boat ramp
  - Compton Drive off leash dog exercise carpark
  - Lennox Surf Club
  - Seven Mile Beach entrance to off leash dog exercise area
  - Pat Moreton walkway off Dress Circle entrance
  - North Wall at walkway near coast guard tower
- Coming Soon:**
- Off leash dog exercise area at Gap Road Alstonville
  - Toilet block at end of Moon Street Fawcett Park
  - The Spit Northern end opposite new carpark at Missingham Park.

*Bag it and Bin it for a cleaner and healthier Ballina Shire.*





## give happy : live happy

**Each year more than six million Australians volunteer in their communities. There are a lot of incredible people in the Ballina Shire who give freely of their time and volunteer for a wide range of causes.**

Council recently held a morning tea for volunteers who assist Council in its operations as part of National Volunteer Week – a small token of appreciation and acknowledgement for the important and valued role they play in our community.

Research shows people who volunteer are happier as a result. If you have some free time and are interested in joining one of Ballina Shire Council's volunteering programs, please contact the program officers below:

### Ballina Byron Gateway Airport Ambassadors

The Volunteer Airport Ambassadors are located at the Visitor Services Desk in the Arrivals lounge of the Ballina Byron Gateway Airport. Volunteers meet and greet visitors and encourage them to see and do more in the region. Ambassadors require a strong commitment to customer service and a willingness to enhance their local knowledge to assist them in their role.

*More information: Alicia Wallace, Team Leader Visitor Services, Phone 02 6686 3484*

### Landcare and Coastcare Volunteer Groups

Landcare and Coastcare volunteer groups in Ballina Shire provide an important role in protecting, conserving and restoring the Shire's biodiversity through bush regeneration, weed control and plantings. This involves closely working within many of the Shire's endangered ecological vegetation communities and around threatened plant species on coastal and hinterland bushland public reserves. The volunteers' labour contribution for this program amounts to \$250,000 towards the various project areas that are under restoration.

*More information: James Brideson, Natural Resource Officer, Phone 02 6686 1412*

### Broadband for Seniors Tutoring

The Broadband for Seniors program is currently held twice each week at the Kentwell Community Centre in Ballina. It offers free internet access and computer training for seniors. Volunteer tutors are crucial to the success of Broadband for Seniors as they provide face-to-face training in computers and the internet. Sessions are generally one-on-one and go for

one hour. Tutors normally volunteer for three hours, once a week, however we can be flexible to suit the availability of tutors.

*More information: Ballina Shire Council Community Facilities, Phone 02 6687 6291*

### Community Participation Program (Garden Restoration)

The volunteers involved in the Community Participation Program offer their time for two hours every Thursday morning at the Lennox Head Cultural & Community Centre. The work includes weeding, planting, mulching and watering.

*More information: Ballina Shire Council Community Facilities, Ph 02 6687 6291*

### Northern Rivers Community Gallery

Northern Rivers Community Gallery (NRCG) volunteers provide front-of-house service and are the first point of contact for visitors to the Gallery. NRCG volunteers are integral in promoting Gallery programming and are responsible for monitoring and keeping artwork safe while the Gallery is open. Gallery volunteers may also help with the physical installation of exhibitions and special events. Volunteers need to be available at least one shift per fortnight however a weekly shift is preferred.

*More information: Lee Mathers, Northern Rivers Community Gallery Coordinator, Ph 02 6681 6167*

*Photos courtesy Tony Partridge*







I'm Green Bea, Ballina Shire Council's *Officer for Environmentally Cool Things*. Check out how beezy I've been in Ballina Shire.

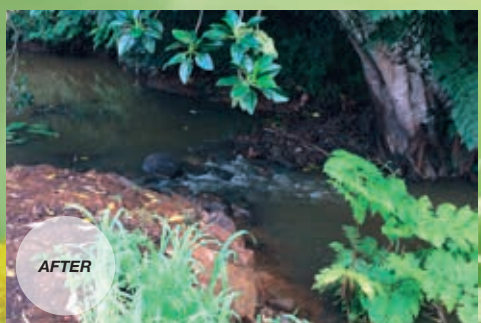
## Duck Creek – fish swim again...

Thanks to a tip-off from a local resident, Ballina Shire Council and NSW Fisheries found an unauthorised concrete weir that had been built across Duck Creek near Alstonville.

They also found a large amount of building waste, green waste and household rubbish that had been placed on the banks of Duck Creek, as well as in the creek.

The weir and the rubbish have since been removed and NSW Fisheries is working with Council on making sure the banks of Duck Creek are stabilised.

Dumping rubbish pollutes our environment. This incident endangered fish and marine life in Duck Creek as well as downstream, as the waste decomposed and contaminated the water.



## Clearing of rainforest at Wollongbar

Last year a resident contacted Council about overgrown vegetation and large piles of green waste in the Dalmacia Drive Public Reserve at Wollongbar.

Council staff investigated and found a large area of the reserve (about 1,000m<sup>2</sup> had been cleared and the vegetation left on the reserve as well as in a creek.

The Dalmacia Drive Public Reserve is a remnant of the Big Scrub subtropical rainforest which is an Endangered Ecological Community, as well as a community asset.

A local resident was found to have removed the vegetation without the knowledge, or consent, of Council and this person is now contributing to the rehabilitation of the area they damaged.



## Future Connections for Ballina Shire's Koalas

Council has recently appointed Blackwood Ecological Services to develop site plans for replanting the Old Bagotville Quarry as part of the Federal Government's 20 Million Trees project.

This project aims to replant a vegetation community which mirrors the vegetation previously found on the site.

The project is part of Council's ongoing commitment to local koalas, which have been identified as an Important Population under the Environmental Protection and Biodiversity Act.

Another project is being run by WetlandCare Australia which involves working with local farmers to plant an alternative windbreak species that is also koala friendly. Windbreaks house significant numbers of koalas on the Alstonville Plateau.

## ENVIRONMENTAL ART

- Each year WetlandCare Australia hosts an annual photography prize to celebrate World Wetlands Day. Council hosted this year's exhibition in the Northern Rivers Community Gallery and we also supported workshops in art weaving using natural materials sourced from wetland areas in the Ballina Shire. More than 1,100 people attended the exhibition.
- Next time you are in Wigmore Arcade make sure you look at the pavers. They celebrate our local life and what is great about Ballina Shire. A series of paver workshops were held late last year and were aimed at family groups, especially grandparents, with the aim of coming together to create a lasting legacy to our area.







## Why is there a dog leg in the shared pathway between Skennars Head and Angels Beach?



**It's great to see so many people using the shared path between Lennox Head and Ballina.**

You may have noticed the path is not straight, running parallel to the road in some sections and close to the fence line in other areas. Have you wondered why the path is located where it is?

The plan for the original path ran adjacent to the road shoulder but council staff thought it would be better to take the path as far away from the busy road as possible.

This alignment is much safer, was cheaper to build because we didn't have to construct retaining walls, and provides better views to the coast.

As part of the construction work a lot of environmental weeds were removed and a "dog leg" section of the path allowed for the retention of littoral rainforest.

Work on the pathway continues with the section between North Creek Road and Amber Drive at Lennox Head to be completed in the next several months.

Keep an eye out for new plants along the path. It was a tough summer for some seedlings and we are replacing those that didn't make it.

## ELECTRIC VEHICLES FOR COUNCIL'S FLEET

**Ballina Shire Council is to include electric vehicles in its passenger fleet. We are always looking to make environmental savings and we are hoping the vehicles will be cost-efficient while reducing our carbon footprint.**

Whilst there are some limitations with the electric vehicles including the short range on electric use (80-100km), we are expecting them to be a viable alternative to petrol and diesel cars.

## waste news...

**Council continues to improve its waste disposal techniques making sure that as much as possible can be recycled or reused.**

Did you know you can now recycle any type of mostly clean soft plastic including shopping bags from supermarkets, glad wrap and cereal packets as long as it is all together in one bag so it doesn't get stuck in the machines. Any kind of hard plastic can also be recycled, even items that don't have recycling symbols.

New recycling satchels can be used for items like phones, phone batteries, CDs and DVDs, x-rays and wine corks. These items can be bundled into the satchels and then put in the recycling bin (further details on page 24).

Take a bow Ballina Shire residents – the amount of recycling has increased by more than 20 tonnes in the last year which is equal to saving as much greenhouse emissions as removing more than six cars from the road for one year.

We're even better at recycling organic waste. This has increased by more than 700 tonnes in the same period which is close to filling two 50m swimming pools. That's a lot of gardening...

*These satchels will be available for collection from 1 July 2015 at customer service outlets such as the Libraries, Waste Management Centre, Council Customer Service Centre and Council Community Facilities.*

## WIN an energy efficiency package

**Council has ten energy efficiency prize packs to give away to lucky local residents.**

Each pack contains energy efficient globes, a water efficient showerhead, a travel mug to keep your hot drinks warm, some door hardware to seal out winter drafts and vouchers for you and a friend to have coffee and cake at the Ballina Lighthouse Café.

To win an Energy Efficiency prize pack tell us what you would like to know more about with regard to our local environment. Email your answer to [council@ballina.nsw.gov.au](mailto:council@ballina.nsw.gov.au) and mark it "Attention Sustainability Programs".



**IDLING**  
**+110 kg**  
CO<sub>2</sub> per year

Idling your car for just five minutes a day really does have an impact. Modern cars don't need their engines to be warmed for five minutes to work efficiently.



## Skullcandy Oz Grom Open

3 – 8 July

Lennox Head

[skullcandyozgromopen.com.au](http://skullcandyozgromopen.com.au)



Get ready – The Skullcandy Oz Grom Open, Australia's premier surfing contest for juniors, is about to hit Lennox Head again. Entries this year filled up in seven minutes ... unbelievable... and we are expecting to see some of the most talented junior surfers in the world at the 2015 event.

The contest will be held from the 3 – 8 July at Lennox Head.

The Skullcandy Oz Grom Open was founded in 2012 by the LE-BA Boardriders Club and it has grown to become the best junior surfing competition in Australia.

The Skullcandy Oz Grom Open was the Ballina Shire Council's Community Event of the Year for 2015 and we are looking forward to once again welcoming surfers and their families to our patch of paradise.

## NAIDOC Week

5 – 12 July

Various locations in Ballina

[ballina.nsw.gov.au](http://ballina.nsw.gov.au)



NAIDOC stands for National Aborigines and Islanders Day Observance Committee. Its origins can be traced to the emergence of

Aboriginal groups in the 1920's which sought to increase awareness in the wider community of the status and treatment of Indigenous Australians.

We encourage all members of the community to participate in the celebrations and activities

that take place in the Ballina Shire during NAIDOC Week.

The annual Celebration Walk will take place on Monday 6 July starting in front of the Ballina RSL Club at 11.00am (assemble from 10.30am). It will proceed along River Street to the Ballina Visitor Information Centre where an official flag raising ceremony will be held.

Local businesses are encouraged to dress up their shopfronts in NAIDOC Week colours to show their support! Free NAIDOC Week posters are available for collection from Council's Customer Service Centre in Cherry Street.

The National NAIDOC theme for 2015 is "We all Stand on Sacred Ground: Learn, Respect and Celebrate". The Bullinah Goori Services Action Group has arranged a full program of activities for NAIDOC Week.

*More information is available on Council's website.*

## Ballina Fine Wine and Food Festival

10 – 12 July

Various Locations

[ballinafinewineandfoodfestival.com.au](http://ballinafinewineandfoodfestival.com.au)



This year's festival has expanded with three big events run over three days. They showcase a fusion of the best produce, products, restaurants and culinary expertise our region has to offer along with premium wines, craft beer, cider and spirits from around Australia and abroad.

The main festival on Sunday 12 July 'Ballina Fine Wine and Food Festival', will be held at the Ballina Jockey Club (11am – 5pm). Tickets are \$20. Entry to the festival is for over 18s only.

Rachael Beck and Wendy Matthews will be performing live. Buses will be running from

Byron Bay, Bangalow, Lismore, Alstonville, Lennox Head and Ballina. Bus tickets are \$5 return, so no need to worry about driving.

Leading up to the main event on Sunday, we have the 'Taste of Ballina Gala Dinner' on Friday 10 July. This very special evening consists of a stunning degustation style dinner. This Gala Dinner event being held at the Ballina RSL Club is sold out.

On Saturday 11 July 'Flavours of Northern Rivers Gourmet Tour' will be running. The bus tour includes a wonderful mix of venues, highlighting the best the Northern Rivers region has to offer. Attendees will get to experience, explore, learn, and indulge while touring our region. The specially selected tour destinations incorporate guided tours of the venues, food and beverage tastings.

Tickets on sale now online:

[ballinafinewineandfoodfestival.com.au](http://ballinafinewineandfoodfestival.com.au) or at various venues around the Shire, check the website for details.

This year our major beneficiary is the Ballina Lighthouse & Lismore Surf Lifesaving Club – funds raised will purchase equipment for the Junior Activities program.

## 18th Annual Lennox Longboard Classic 2015

1 – 2 August

Lennox Main Beach

[lennoxlongboarders.org](http://lennoxlongboarders.org)



The Lennox Head Longboarders Club will host the annual Lennox Longboard Classic on the 1 – 2 August. This year marks the 18th anniversary of the event which attracts competitors from along the east coast of Australia. Divisions this year include Juniors, under 18s to over 60s, Ladies, Old Malibu and Loggers. Come on down to Lennox and hang 10, hang 5 or just hang out.





## Rainbow Region Dragon Boat Regatta

22 – 23 August

Shaws Bay, East Ballina

[rainbowdragons.com.au](http://rainbowdragons.com.au)



The Rainbow Region Dragon Boat Regatta will be held at Shaws Bay, East Ballina on 22 – 23 August 2015. Sports crews will contest a 1km Chase Race, a 100m Splash 'n Dash and a State of Origin race on Saturday afternoon, with a full day of 200m sprint racing on Sunday involving dragon boat clubs from NSW and Queensland as well as community teams drawn from the local area.

This is an officially sanctioned Dragon Boats NSW regatta, sponsored by the Shaws Bay Hotel. Spectators are very welcome to come along and experience the excitement at this family-friendly, no-alcohol sporting event.

## Quota Club of Alstonville/Wollongbar Craft & Garden Fair

29 – 30 August

Alstonville Leisure Centre & Apex Pavilion Commercial Road Alstonville

[quotaalstonville.com](http://quotaalstonville.com)



The Quota Craft & Garden Fair is bigger this year – 62 craft stalls featuring handcrafted jewellery, leather handbags, quilting, ceramics, woodworks and 28 garden stalls featuring herbs, organic plants, palms, stone art for the garden.

For the children – cupcake decorating, planting herbs or vegetables, face painting are just a few of the fun activities.

The Alstonville Rural Fire Brigade will hold its Open Day on the Saturday at our Fair.

All funds raised go to the hearing and speech impaired, disadvantaged women and children and individuals and organisations needing assistance in our community.

## Alstonville 150 Year Celebrations Dinner

5 September

Alstonville Leisure and Entertainment Centre

[aphsmuseum.org.au](http://aphsmuseum.org.au)



This is the event of the year to celebrate 150 years of permanent settlement in Alstonville. Enjoy a two-course meal,

entertainment by the Headliners and Awesome Voices choirs, and presentation of Citizenship Awards for those who have made major contributions to the Alstonville district over the past 25 years. Ian Cooke will also launch Ian Kirkland's book Tibouchina Town: Alstonville 1865 – 2015.

Dinner tickets @ \$45 pp are available at Crawford House.

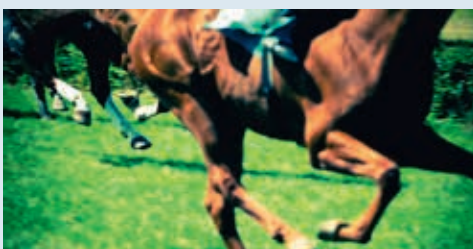
Award nomination forms can be downloaded from [aphsmuseum.org.au](http://aphsmuseum.org.au).

## Ballina Cup Day

10 September

Ballina Jockey Club

[ballinajockeyclub.com.au](http://ballinajockeyclub.com.au)



A part day public holiday has been declared for the Ballina Shire area for Ballina Cup Race Day on Thursday 10 September 2015 from 12 midday to 6 pm.

## upcoming events

### Skullcandy Oz Grom Open

3 – 8 July

Tony O'Brien

0434 047 726

[skullcandyozgromopen.com.au](http://skullcandyozgromopen.com.au)

### NAIDOC Week

5 – 12 July

[ballina.nsw.gov.au](http://ballina.nsw.gov.au)

### Ballina Fine Wine and Food Festival

10 – 12 July

Jodie Shelley

0427 287 627

[ballinafinewineandfoodfestival.com.au](http://ballinafinewineandfoodfestival.com.au)

### 18th Annual Lennox Longboard Classic 2015

1 – 2 August

Wayne Booth

0423 139 559

[lennoxlongboarders.org](http://lennoxlongboarders.org)

### Rainbow Region Dragon Boat Regatta

22 – 23 August,

Deborah Gibson

0415 683 801

[rainbowdragons.com.au](http://rainbowdragons.com.au)

### Quota Club of Alstonville/Wollongbar Craft & Garden Fair

29 – 30 August

Diana Cooper

0417 251 952

[quotaalstonville.com](http://quotaalstonville.com)

### Alstonville 150 Year Celebration Dinner

5 September

Ina le Bas

02 6628 5457

[aphsmuseum.org.au](http://aphsmuseum.org.au)

### Ballina Cup Day

10 September

Ballina Jockey Club

02 6686 0333

[ballinajockeyclub.com.au](http://ballinajockeyclub.com.au)



## Fluoride dosing for Marom Creek Water Treatment Plant

Ballina Shire residents should expect fluoridated water to be turned on early August 2015. Residents do not need to do anything in preparation for fluoridated water. When the change is implemented residents should not notice any difference in taste or water quality.

Residents of Wardell have been receiving fluoridated water from Marom Creek Wastewater Treatment Plant since January this year.

For residents who would prefer not to use fluoridated water, reverse osmosis units can be purchased through specialist suppliers.

For more information go to:

Rous Water: [rouswater.nsw.gov.au](http://rouswater.nsw.gov.au)

NSW Health: [health.nsw.gov.au/environment/water/Documents/fluoridation-questions-and-answers-nsw.pdf](http://health.nsw.gov.au/environment/water/Documents/fluoridation-questions-and-answers-nsw.pdf)



## NEW DEVELOPER CHARGES FOR WATER AND WASTEWATER TO BE IMPLEMENTED FROM 1 JULY 2015

The Council resolved at its Ordinary Meeting of 27 February 2015 to Adopt the Revised Development Servicing Plans - Water Supply and Wastewater Infrastructure.

Council has now received confirmation from the NSW Office of Water regarding the registration of the Plans.

From 1 July 2015, Council will be applying the Developer Charges as listed in the new Development Servicing Plans (DSPs) for Water and Wastewater to all fees paid for that purpose.

The DSPs detail water and wastewater developer charges for development areas serviced by Ballina Shire Council. The Plans show construction works necessary to allow the connection of new development areas into its water and wastewater networks. It also includes upgrade works required to keep up with demand as a result of residential development. The works detailed in the DSP are funded by developers through Section 64 Charges.

The Development Servicing Plans can be viewed on Council's website [ballina.nsw.gov.au](http://ballina.nsw.gov.au)

## New Rebates

From the 1st of April there will be new rebates available for residents on town water.

Ballina Shire residents will be able to access rebates for rainwater tanks or connection to recycled water (which is a drought proof source).

Terms and conditions apply.

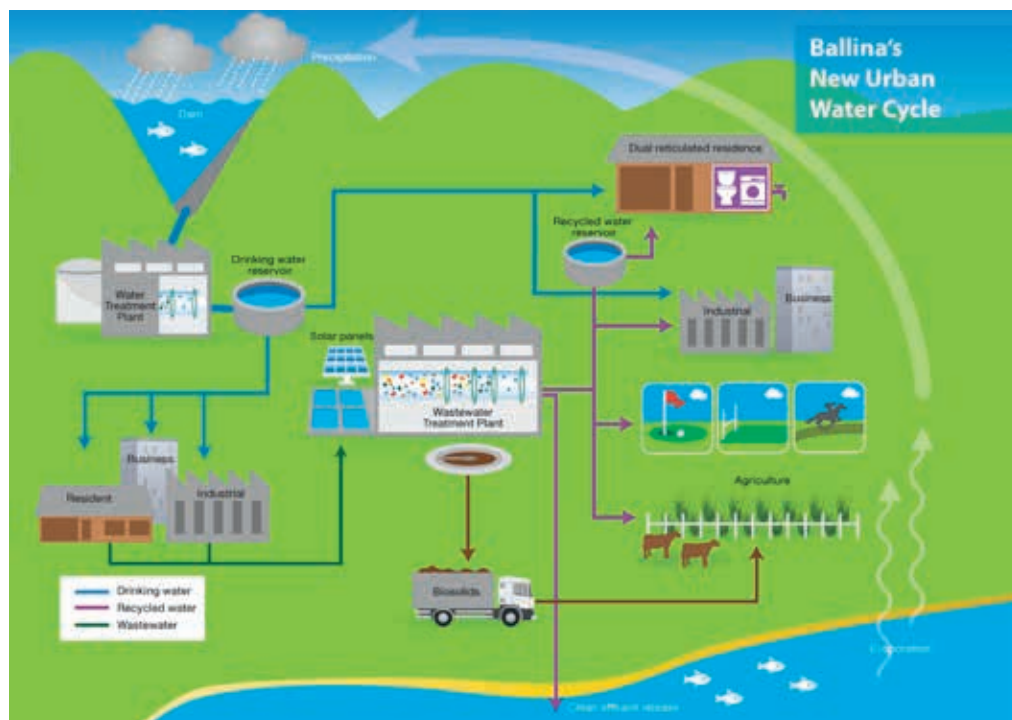
For more information visit [rouswater.nsw.gov.au](http://rouswater.nsw.gov.au) or telephone 02 6621 8055





# MYTH BUSTERS

mythbusters



## recycled water

Recycled water produced from treated sewage is helping to reduce our reliance on drinking water and improve the quality of water discharged at the Boulder Beach outfall. The recent upgrade to the Lennox Head Wastewater Treatment Plant has allowed for the production of treated sewage to be processed into recycled water for domestic, business and irrigation purposes. This will ultimately save households with dual reticulation an estimated 40% of their previous drinking water use.

Approximately 1,700 million litres of sewage is treated at the plant each year and currently 10% of this total is used to irrigate the Skennars Head and Chickiba Sports Fields and East Ballina Golf Course. The volume of recycled water use will increase in the future, however Council has a few hurdles to jump prior to this occurring. Whilst the construction phase of the project is complete, Council has entered into a long commissioning phase which ultimately tests the integrity and safety of the system and awaits approval from the NSW Office of Water for the project to commence supplying homes and businesses with recycled water for toilets, cold water laundry taps (for washing machines), and at least one outdoor tap to use recycled water on the garden. It has been mandated that all

new Lennox Head subdivisions are required to include dual reticulation (i.e. two sets of water pipes – blue for drinking water, and purple for recycled water). This will allow those homes to reduce their use of drinking water by approximately 40%, and means those homes will have a drought-free water source with no restrictions on garden watering during drought periods.

Once the NSW Office of Water has approved the license conditions the intention is to construct additional pipelines to increase the area of recycled water use to the Lennox Head Cultural and Community Centre, Williams Reserve, and the following housing estates: North Angels Beach, Elevation, Aspects and Coastal Grove.

Approval is anticipated later this year and Council can then supply recycled water to approximately 200 homes in Lennox Head. As new development occurs and is connected to the scheme, the percentage of water recycled will increase. Ultimately there will be approximately 2500 homes connected to the scheme in Lennox Head, and 7500 across the entire Shire. Over 50% of sewage would be recycled at that point in time – resulting in similar reductions to discharge volumes at the Boulder Beach ocean outfall. This is in addition to the already improved quality of water discharged at the ocean outfall.

Contributed by Megan Spyker

## IS THE BALLINA BYRON GATEWAY AIRPORT SAFE?

**Absolutely!**

The Airport is a highly regulated operation with regular audits and inspections including:

- Annual Aerodrome Technical Inspections
- Annual Civil Aviation Safety Authority (CASA) Audits
- Regular Workplace Health and Safety Audits
- Regular Aeronautical Studies (December 2010, May 2013 with an update due May 2015)

We meet all the regulatory requirements of CASA. The Airport infrastructure is well maintained and operated with extensive capital works being undertaken to accommodate additional services. The Airport complies with all CASA Standards and Rules.

## IS THE AIRSPACE AROUND THE AIRPORT SAFE?

**Absolutely!**

## DOES THE AIRSPACE AROUND BALLINA BYRON GATEWAY AIRPORT REQUIRE ADDITIONAL CONTROLS?

**According to CASA, no.**

## CAN WE INSTALL AN AIR TRAFFIC CONTROL TOWER (ATCT) AT THE AIRPORT?

**The answer is yes!**

However, the provision of an ATCT at Ballina Byron Gateway Airport is not required at this point in time as it does not meet the current established guidelines. The cost to install an ATC Tower is about \$10 million.



Photo courtesy Craig Parry





## DO YOU RECOGNISE THIS TRAILER?

An unusual load was dumped on North Creek Road, Lennox Head in mid-May. Council Rangers who were out on their regular patrol came across the load including 300kg of green waste in an abandoned red trailer.

Council is currently following leads but if you have any information that could assist with our investigations please contact Council's Rangers on 02 6686 1210.

Council is involved in a regional project coordinated by North East Waste to reduce illegal waste dumping.

As part of this project Council has recently acquired several covert surveillance cameras.

The cameras will be used primarily to detect people illegally dumping waste in some of the known dumping hot spots across the shire.

Council spends approximately \$100,000 a year cleaning up waste illegally dumped in public areas and the use of surveillance cameras is expected to not only catch those responsible, but also to act as a deterrent.

People caught dumping waste will be fined and made to clean up the area, or pay for clean-up costs.

If the materials dumped contain hazardous materials such as paints, chemicals or asbestos the fines are even greater.

If residents have information regarding illegal dumping they can report it online at [illegaldumping.com.au](http://illegaldumping.com.au) or contact Council on telephone 02 6686 1210.

## waste calendars included

See inside this edition of *Community Connect* for your Waste Calendar for 2015/16. If it's missing please collect a copy from Council's Customer Service Centre, 40 Cherry Street, Ballina or contact Council 02 6686 4444 to have a calendar mailed to you.



## Council wins award for vigilance on Asbestos

Ballina Shire Council is making a name for itself as a leader in managing asbestos, winning an award at the Australian IPWEA Works Officers Conference.

Judges were impressed with the Council's Asbestos Management Program which takes a multi-pronged approach to helping staff, developers, fire fighters and the wider community manage the potential exposure and disposal of asbestos.

In 2014 Council's Asbestos Management Program was recognised at the Local Government Excellence in the Environment Awards.



image: Mark Newsham and Daniel Leigh receiving the Workplace Health & Safety Award at the IPWEA (NSW) Works Officers Conference. The award was sponsored by Pro Visual Publishing and was presented by their CEO, Mr John Hutchings.

## new WASTE DISPOSAL SATCHELS

Council will soon receive approximately 20,000 of these new recycling satchels which can be used for items like phones, phone batteries, CDs and DVDs, x-rays and wine corks. These items are bundled into the satchels and then put in the recycling bin.

Council will have these satchels available from customer service outlets such as the Libraries, the Waste Centre, the Council Customer Service Centre, and Council Community Facilities. They will be available for collection from 1 July 2015.

## MRF RESOURCE RECOVERY COLLECTION SATCHEL



WHEN FULL PLEASE SEAL THIS BAG AND PLACE IT IN YOUR YELLOW RECYCLING BIN. PLEASE PUT BATTERIES AND PRINTER CARTRIDGES IN A PLASTIC OR ZIP LOCK BAG BEFORE PUTTING THEM INTO THE SATCHEL TO HELP KEEP THE OTHER ITEMS CLEAN. ADDITIONAL SATCHELS CAN BE OBTAINED FROM BALLINA SHIRE COUNCILS LIBRARY, COUNCIL CHAMBER COMMUNITY CENTRE OR WASTE FACILITY.

For more information please contact The Waste Hotline on 1300 6686 1287. This project is a NSW EPA Waste Less, Recycle More initiative funded from the waste levy. Visit [www.epa.nsw.gov.au](http://www.epa.nsw.gov.au)







## Small Business Kicking Big Waste Goals

**More than 250 businesses in the Northern Rivers region have participated in the Waste Warriors Bintrim project, an initiative that helps them save money by recycling more and wasting less.**

"In the Ballina Shire we have had 30 businesses participating in the program, and it is great to see some really motivated, connected and forward thinking businesses who are very keen to do what it takes to reduce the amount of waste going to landfill," Project Coordinator, Kim Potter said.

"These businesses have helped divert 636 tonnes of waste out of landfill and substantially increased their recycling of our valuable resources.

"The Northern Rivers is leading the way with recycling technologies, and businesses are very keen to do all they can to contribute to a green economy.

"We are hearing from local business that customers are really supporting and acknowledging those businesses making the effort," Ms Potter said.

The Bintrim project is managed by North East Waste and is financed by the NSW Environment Protection Authority as part of its Waste Less Recycle More fund.

*Find out how your business can be involved by visiting*  
**[wastewarriors.com.au](http://wastewarriors.com.au)**

## asbestos removal

**Ballina Shire Council has built an asbestos trailer as part of its approach to cleaning up the hazardous material.**

The trailer has equipment to outfit emergency personnel, signs and bollards to warn the public of the dangers of asbestos, clean-up equipment and personal protective clothing. It has been particularly useful in the clean up of contaminated material that has been illegally dumped.

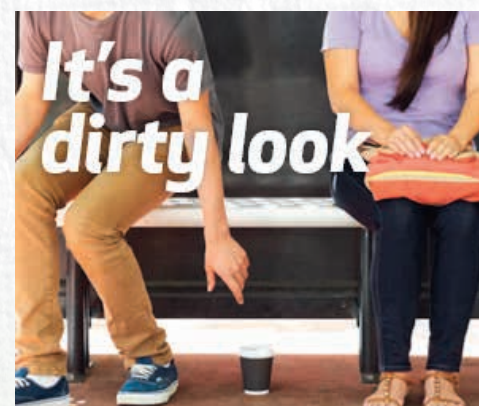
The trailer is also used for the routine replacement of water mains that contain asbestos.



## LOCAL FOOD

**–2275 kg  
CO<sub>2</sub> per year**

By eating locally, you're not just getting food at a higher quality, but you're also supporting your local farmers and producers. At the same time the fuel costs and emissions of transportation are virtually cut out, which can add up to a total carbon saving of 2275 kg a year, just by having local food once a week.



**Don't be a tosser,  
put it in the bin.**

**newaste**  
north east waste







# What to do during the *School Holidays*

Looking for something to do with the kids or grandchildren over the school holidays? There's something to satisfy all interests including educational, sporty and creative activities to keep the kids entertained.

## EDUCATIONAL

### Australian Seabird Rescue Tours

Tours commence Monday 29 June through to Friday 10 July Monday to Fridays during school holidays  
10am to 11am  
\$5 entry fee  
264 North Creek Road, Ballina  
Ph: 02 6686 2852  
Email: [admin@seabirdrescue.org](mailto:admin@seabirdrescue.org)  
[seabirdrescue.org](http://seabirdrescue.org)

### Ballina Library

Various activities, call for details and bookings  
8 River Street, Ballina  
Ph: 02 6686 2831  
Email: [rtrl@rtrl.nsw.gov.au](mailto:rtrl@rtrl.nsw.gov.au)  
[rtrl.nsw.gov.au](http://rtrl.nsw.gov.au)

### Friends of the Library

Children's book sale  
Saturday 4 July  
9.30am  
8 River Street, Ballina  
Ph: 02 6686 2831

### Lennox Head Library

Lennox Library is turning into a chicken hatchery with live chickens and eggs that will hatch over the holidays. Henny Penny Hatching Chicks will be visiting from Monday 29 June until Friday 10 July  
Library Hours:  
Mon – Fri 9.30am – 5pm,  
Saturday 9 – 12pm  
Lennox Head Cultural & Community Centre  
Ph: 02 6687 6398  
Email: [rtrl@rtrl.nsw.gov.au](mailto:rtrl@rtrl.nsw.gov.au)  
[rtrl.nsw.gov.au](http://rtrl.nsw.gov.au)

### Ballina Naval & Maritime Museum

Explore the history & enjoy the extensive displays  
9am to 4pm  
Open 7 days  
Regatta Avenue, Ballina  
Ph: 02 6681 1002  
[ballinamaritimemuseum.org.au](http://ballinamaritimemuseum.org.au)

## FAMILY FUN

### Amaze N Place

Free alpaca feeding every day at 11am plus lattice maze, puzzles, sandpit, cubby house and café  
10am – 4.30pm  
Open school holidays only  
149 Wardell Road, Alstonville  
Ph: 02 6628 6286  
[amaze-n-place.com.au](http://amaze-n-place.com.au)

### Ballina Tenpin Bowl

Holiday special 2 games for \$14  
Glow in the Dark Bowling  
12 – 4pm and after 7pm  
Open 7 days  
16 Clark Street, Ballina  
Ph: 02 6686 5342  
[ballinatenpinbowl.com.au](http://ballinatenpinbowl.com.au)

### Macadamia Castle

Full program of daily activities, animal feeding & Frog Pod Conservation Research Centre, new Free Flight Bird Show + School Holiday Activities "Keeper for the Day" and "Meet Minnie the Wombat"  
8am – 5pm  
Open 7 days  
1699 Pacific Highway, Knockrow  
Ph: 02 6687 8432  
Email: [info@macadamiacastle.com.au](mailto:info@macadamiacastle.com.au)  
[macadamiacastle.com.au](http://macadamiacastle.com.au)

### Summerland House Farm

Water spray park, gardens, playground, mini golf, heritage cottage, The Grocer & Café + School Holiday Activity – Artie Fartie Kids Party and Sunday Funday  
9am – 4pm  
Open 7 days  
253 Wardell Road, Alstonville  
Ph: 02 6628 0610  
[summerlandhousefarm.com.au](http://summerlandhousefarm.com.au)

### Teven Valley Golf Course + Footgolf

Beautiful 9 hole golf course and from midday enjoy FootGolf – a hybrid of golf & soccer  
Great fun for the whole family  
8am to dusk  
Open 7 days  
1684 Eltham Road, Teven  
Ph: 02 6687 8386  
[tevenvalleygolfcourse.com.au](http://tevenvalleygolfcourse.com.au)

### Thursday Plantation

Enjoy the Verandah Café, Rainforest Walk, Sculpture Garden and Tea Tree Maze  
Open weekdays 9am – 5pm and weekends 10am – 4pm  
Gallans Road, Ballina  
Ph: 02 6620 5150  
[thursdayplantation.com](http://thursdayplantation.com)

### Ballina Fair Shopping Centre – Meet Make Create

Hands on craft workshops at 10am, 11am, 12pm and 1pm  
Wednesday 1 – Saturday 4 July  
Bookings are essential  
Email: [info@ballinafairshopping.com.au](mailto:info@ballinafairshopping.com.au)  
Ph: 02 66 86 8555  
Activity is free  
Children are to be supervised by parents

### Ballina Fair Shopping Centre – Shorty Brown Magic Show

Wednesday 8 – Saturday 11 July  
Magic Show: 10:30am – 11am then meet and greet Shorty Brown roving around the Centre from 11am – 1pm  
Cnr Kerr & Fox Streets, Ballina  
Ph: 02 6686 8555  
Email: [info@ballinafairshopping.com.au](mailto:info@ballinafairshopping.com.au)  
[ballinafairshopping.com.au](http://ballinafairshopping.com.au)

### Ballina Fair Cinemas

New release movies  
Jurassic World, Inside Out, Minions & Terminator this winter  
Open 7 days  
Cnr Kerr & Fox Streets, Ballina  
Ph: 02 6686 9600  
[ballina.info/cinema](http://ballina.info/cinema)

### Cherry Street Sports Club

Tennis court & racket hire, barefoot bowls, playground and outdoor TV  
Open 7 days  
Cnr Cherry & Bentinck Streets, Ballina  
Ph: 02 6686 2811  
Email: [info@cherrystreet.com.au](mailto:info@cherrystreet.com.au)  
[cherrystreet.com.au](http://cherrystreet.com.au)

### Crystal Castle

Discover a magical place of giant crystals, sacred statues, stunning rainforest, gardens, unique jewellery and fresh food. Enrich your spirit.  
10am to 5pm  
Open 7 days  
81 Monet Drive, Mullumbimby  
Ph: 02 6684 3111  
Email: [info@crystalcastle.com.au](mailto:info@crystalcastle.com.au)  
[crystalcastle.com.au](http://crystalcastle.com.au)

### Richmond Princess River Cruises

Enjoy morning or afternoon tea aboard the Richmond Princess cruising the Richmond River  
Weather permitting – every Sunday  
10am and/or 2pm  
Additional cruises may be scheduled according to demand  
Bookings Essential  
Regatta Avenue, Ballina  
Ph: 1800 777 666  
[rrcruises.com.au](http://rrcruises.com.au)

### Lake Ainsworth

Splash in the fresh tea-tree waters  
Picnic & BBQ facilities available  
Pacific Parade, Lennox Head

### Victoria Park Nature Reserve

300m boardwalk loop with BBQ and picnic facilities in the picturesque "Big Scrub" remnant. Collect the 30 Great Walks brochure from the Visitor Centre for many more walks in the region.  
Victoria Park Road, Dalwood  
Ph: 02 6627 0200  
[nationalparks.nsw.gov.au](http://nationalparks.nsw.gov.au)





### Ballina Fair Swim & Gym

Indoor heated pool  
One stop training venue  
Ballina Fair Shopping Centre  
Ph: 02 6686 8299

### Ballina Boat Hire

Tinnies or BBQ boats for hire  
Available 7 days a week  
268 River Street, Ballina  
Ph: 0402 028 767

## SPORTY FUN

### Kayak Ballina

Guided Kayak Tours of Ballina's beautiful waterways. Basic skills lesson included  
Bookings essential  
Daily tours. Open 7 days  
Ph: 02 6681 4000  
[kayakballina.com](http://kayakballina.com)

### Tassiriki Ranch Beach Horse Riding

Daily tours. Open 7 days  
Moylans Road, Empire Vale  
Ph: 02 6683 4602  
[tassirikiranch.com.au](http://tassirikiranch.com.au)

### Pegasus Park Horse Riding

Daily tours. Open 6 days  
946 Friday Hut Road, Tintenbar  
Ph: 02 6687 1446 or 0428 871 446  
[pegasuspark.com.au](http://pegasuspark.com.au)

### Byron Bay Air Charters

Scenic coastal flights  
Departs Ballina-Byron Gateway Airport  
Daily Tours. Open 7 days  
Southern Cross Drive, Ballina  
Ph: 02 6686 4876  
Email: [info@byronbayaircharter.com.au](mailto:info@byronbayaircharter.com.au)  
[byronbayaircharter.com.au](http://byronbayaircharter.com.au)

### Classic Aero Adventure Flights

Take a scenic flight in a genuine ex-RAAF warbird plane.  
Departs Ballina-Byron Gateway Airport  
Daily Tours. Open 7 days  
Southern Cross Drive, Ballina  
Ph: 0432 318 282  
[classicaero.com.au](http://classicaero.com.au)

### Lennox Head Skate Park

Park Lane, Lennox Head

### Missingham Skate Park

Kingsford Smith Drive, Ballina

### Lennox Head Sport & Recreation Centre

Camp adventure activities  
Kids club (day only) 29 June – 3 July for 7 – 12yo, \$225  
Kids club (day only) 6 – 10 July for 7 – 12yo, \$225  
Bookings: 02 6687 7168  
[dsr.nsw.gov.au](http://dsr.nsw.gov.au)

### The Bicycle Emporium

Hire a retro or fat bike and explore the cycleways  
Open 7 days  
158 River Street, Ballina  
Ph: 02 6681 4054  
[facebook.com/thebicycleemporium](http://facebook.com/thebicycleemporium)

### Sunrise Cycles

Hire a bike and ride along the Richmond River  
Mon – Fri 8am – 5.30pm  
Sat 8am – 2pm  
3 Hogan Street, Ballina  
Ph: 02 6686 6322  
[facebook.com/sunrisecyclesballinabyron](http://facebook.com/sunrisecyclesballinabyron)

### Transition Cycles

Hire a bike and ride along the Richmond River  
Mon – Wed & Fri 8:30am – 5pm,  
Thurs 8:30am – 6pm &  
Sat 9am – 1pm  
49 River Street, Ballina  
Ph: 02 6686 6522  
[facebook.com/transitioncyclesballina](http://facebook.com/transitioncyclesballina)

### Surf Lessons with Kool Katz

Lessons for beginner or intermediate levels  
All equipment provided including steamer wetsuits  
Pick up & drop off available  
Packages, private and group lessons  
Lessons from \$49  
7 days of lessons just \$210 (3hrs each day from arrival – cheaper than a babysitter)  
Daily lessons  
Open 7 days  
Ballina & Lennox Head  
Ph: 02 6685 5169  
[koolkatzsurf.com](http://koolkatzsurf.com)

### Surf and Stand Up Paddle

Board lessons with Mojo Surf  
Learn how to surf or Stand Up Paddle board. All equipment provided.  
Daily lessons  
Open 7 days  
6 July 14 July  
5 – 12 years surf grom lessons  
5 day daily lesson.  
Mon – Fri 8am – 10am  
\$210 per child.  
Or Surf \$69 kids  
14 and over  
Ballina & Lennox Head  
Ph: 1800 113 044  
[mojosurf.com](http://mojosurf.com)

## GET CREATIVE

### Kidz Klub at Lennox Head

Cultural and Community Centre  
1, 2 & 3 July and 8, 9 & 10 July  
\$20 per session per child or  
\$40 per child full day  
Morning, Afternoon or Full Day –  
Bookings essential  
1 Mackney Lane,  
Lennox Head  
Ph: 02 6687 6291

### Alstonville Dance Studio Holiday School

Ballet, Contemporary, Jazz, Hip Hop, Cabaret and Tap dance and Creative Arts  
Open to all people with and without disabilities  
All ages, all levels, boys and beginners welcome  
8, 9 & 10 July  
from 9am to 5pm  
Ph: 0428 748 294

*If you are hosting school holiday activities contact the Ballina Visitor Information Centre on telephone 1800 777 666 or email [balinfo@ballina.nsw.gov.au](mailto:balinfo@ballina.nsw.gov.au) to include your details in the School Holiday Activities Program. This is made available to visitors via [discoverballina.com](http://discoverballina.com)*

# market calendar

There is a market or two held every weekend in the Ballina Shire. Discover original artworks, handicrafts, fashion, jewellery, second hand goods, as well as fresh local produce...or just sit back, relax and enjoy the sights and sounds of your local market.

### Alstonville Farmers Market

Bugden Lane Carpark  
**Every Saturday**  
8am – 12pm  
0478 163 038

### Ballina Missingham Farmers Market

Kingsford Smith Drive  
**Every Sunday**  
6am – 12pm  
0416 048 241

### Lennox Community Market

Lennox Head Cultural & Community Centre  
**2nd & 5th Sunday**  
8am – 2pm  
0419 369 609

### The Plateau Market

Alstonville Showground  
**2nd Sunday**  
8am – 2pm  
0478 163 038

### Ballina Market

Canal Road  
**3rd Sunday**  
7am – 1pm  
6686 4546





## what's on at your local community facility

Ballina Shire Council provides a range of quality spaces that cater for thousands of bookings every year; from community meetings and events to private functions, recreational classes and corporate seminars. All of these spaces are available to hire by individuals, community groups, businesses and organisations.

To hire a community space, please contact one of our friendly staff on 02 6687 6291 or email [communityspaces@ballina.nsw.gov.au](mailto:communityspaces@ballina.nsw.gov.au)



**LENNOX HEAD CULTURAL & COMMUNITY CENTRE (LHCCC)**  
1 Mackney Lane, Lennox Head



**KENTWELL COMMUNITY CENTRE (KCC)**  
20 Bangalow Road, Ballina



**BALLINA SURF CLUB FUNCTION ROOMS (BALLINA SC)**  
65 Lighthouse Parade, Ballina



**THE RICHMOND ROOM (RR)**  
Regatta Avenue, Ballina



**ALSTONVILLE LEISURE & ENTERTAINMENT CENTRE (ALEC)**  
42 – 46 Commercial Road, Alstonville

### HOBBIES, INTEREST GROUPS & EDUCATION

#### AMORC

KCC  
3rd Saturday of the Month  
2:00pm – 4:00pm  
Lyn 0401 766 754  
[amorc.org.au](http://amorc.org.au)

#### Ballina Camera Club

KCC  
2nd and 4th Thursdays of the Month  
6:00pm – 9:00pm  
Mark 02 6686 6915  
[mark@ballinacamera.club](mailto:mark@ballinacamera.club)

#### Broadband for Seniors

KCC  
Mondays and Thursdays  
8:30am – 12:30pm  
02 6687 6291

#### Sacred Women's Circle

LHCCC  
Last Wednesday every month  
7:30pm – 9:00pm  
Dominica 0439 678 866

#### Sing Australia

KCC  
Every Tuesday Evening  
7:00pm – 9:00pm  
Barbara 02 6628 1557  
0412 660 472

#### The Silver Smiths

KCC  
Every Wednesday Evening  
5:00pm – 6:00pm  
Helen 02 6681 6357 or  
Jennie 02 6686 5663

### COMMUNITY SERVICES

#### Northern Rivers No Interest Loans

KCC  
Tuesdays  
10:00am – 4:00pm  
02 6621 7397

#### Interrelate Ltd: Outreach Program

KCC  
Wednesdays and Fridays  
9:00am – 5:00pm  
Phone 02 6623 2750

#### Northern Rivers Gambling Counselling Service

KCC  
By Appointment  
Phone 02 6687 2520  
[buttery.org.au](http://buttery.org.au)

#### RSL Tibouchina Day Club

ALEC  
Wednesdays  
10:00am – 2:00pm  
Marette 02 6624 2714

#### Ballina Lighthouse RSL Day Club

Richmond Room  
Thursdays  
10:00am – 2:00pm  
Fay 02 6686 3517  
Lorraine 02 6687 4350

### HEALTH & WELLBEING

#### Australian Red Cross Blood Service

RR  
Various Mondays and Tuesdays each Month  
Mon 1:30pm – 7:00pm  
Tues 9:00am – 2:00pm  
Pre arrange an appointment  
Phone 13 14 95

#### Breast Cancer Support Group

KCC  
1st Thursday of the Month  
10:00am – 11:30am  
Robyn 0413 027 446

#### General Cancer Support Group

Ballina SC  
2nd Thursday of the Month  
10:00am – 11:30am  
Robyn 0413 027 446

#### Bulk Billing Psychologist

LHCCC  
Every Tuesday  
8:00am – 5:00pm  
Chris 0413 725 471

#### Cannabis Clinic

KCC  
Every Tuesday  
9:30am – 3:30pm  
1300 664 098

#### Deirdre Middlehurst Clinical Psychologist

LHCCC  
Every Thursday  
8:00am – 5:00pm  
Deirdre 0481 094 709

#### INTRIA: The Buttery's Drug & Alcohol Outreach Program

KCC  
Wednesdays  
1:30pm – 3:00pm  
Phone 02 6687 2835





### Northern Rivers Occupational Therapy

KCC  
Last Friday of month  
8:30am – 8:30pm  
Roshan  
02 6681 6995  
0430 358 301

### Paediatrician

LHCCC  
Every Wednesday & Friday  
8:00am – 6:00pm  
Dr Uli Schmidt  
02 5622 6020  
reception@drulrikeschmidt.com

### SOL North Coast Nutrition

KCC  
2nd and 4th Monday  
8:30am – 12:00pm  
Christina  
02 6680 8576

### Provide First Aid and CPR Classes

LHCCC  
Various Dates  
9:00am – 5:00pm  
Nancy  
1300 275 628

### YOGA, DANCE & EXERCISE

### Feldenkrais Movement Class

LHCCC  
Every Tuesday  
4:30pm – 5:30pm  
Lyn 02 6687 6815

### Over 65's Fitness

Ballina SC  
Fridays 3 July – 21 August  
11:00am – 12:00pm  
1300 085 181

### Healthy Lifestyles by CHEGS

LHCCC  
Every Tuesday  
10:00am – 11:00am  
02 6620 7523  
0409 349 891

### Physical Culture

ALEC  
Every Tuesday  
3:30pm – 7:00pm  
Jenna  
0406 774 992

### Purna Yoga with Tamika

Ballina SC  
Every Tuesday  
6:00pm – 7:00pm  
Tamika 0439 451 493

### Rachel Reid's Dance Academy

LHCCC  
Every Wednesday  
4:00pm – 8:00pm  
Rachel 0402 424 504

### Surfit Lennox Yoga

LHCCC  
Every Wednesday  
6:00am – 7:00am  
02 6687 7002

### Ujali Yoga with

Jess  
LHCCC  
Every Mon, Tue, Wed & Thu  
6:00pm – 7:30pm  
Jess 0468 348 015

### SPORT, GAMES AND COMPETITIONS

### Alstonville Aikido

ALEC  
Mondays and Wednesdays  
7:30pm – 9:00pm  
Jim  
0404 281 003

### Alstonville Lifeball

ALEC  
Every Monday  
10:00am – 12:00pm  
Julie  
0413 086 325

### Ballina Netball Association

ALEC  
Tuesdays 6:00pm – 9:30pm  
Thursdays 6:00pm – 9:30pm  
Talita  
0488 288 827

### Lennox Head Lifeball

LHCCC  
Every Tuesday  
9:30am – 11:30am  
Yvonne 0448 004 161  
Trish 0411 272 685

### United Gymnastics Academy

ALEC  
Mon, Wed, Thu and Fri  
4:00pm  
Kindy Gym Mon and Fri 9:30am  
Alison 02 6628 3533

### KIDS & BABIES

### Angelina Ballerina Dance Academy

LHCCC  
Every Tuesday  
10am – 11am  
Phone 0414 827 155

### Lennox Head Playgroup

LHCCC  
Tuesdays and Fridays  
9:30am – 11:30am  
(during school terms only)  
Jessica 02 6687 5745

### Kidz Klub

LHCCC  
July School holidays  
Wed 1, Thu 2, Fri 3, Wed 8, Thu 9, Fri 10 July  
9:30am – 4:00pm  
02 6687 6291

### IN THE LIBRARIES

### Alstonville Book Club

ALEC  
1st Monday of the Month  
10:30am – 12:00pm  
Alstonville Library 02 6628 5527

### Baby Bounce

ALEC 02 6628 5527  
Thursday 10:30  
Ballina 02 6686 2831  
Monday 10:30  
LHCCC 02 6687 6398  
Wednesday 10:30

### Story Time

ALEC 02 6628 5527  
Tuesday 11:00am  
Ballina 02 6686 2831  
Tuesday & Friday 11:00am  
LHCCC 02 6687 6398  
Thursday 10:30

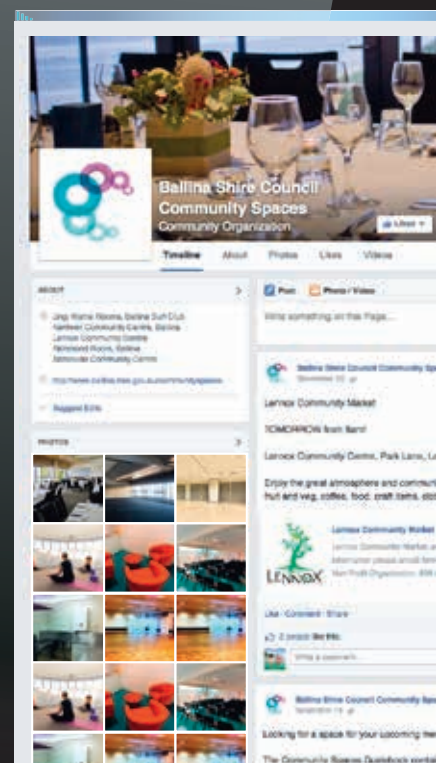
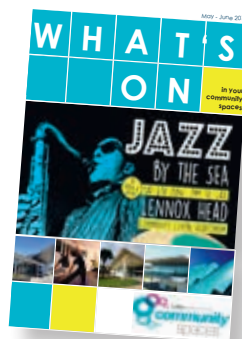
### Henny Penny Hatching Chicks

Lennox Head Library  
Mon 29 June – Fri 10 July  
02 6687 6398

### UPCOMING EVENTS

### Lennox Head Community Markets

LHCCC  
2nd and 5th Sunday  
of the Month  
8:00am – 2:00pm  
0419 369 609



## like us on facebook

Ballina Shire Council Community Spaces is not only about great venues to hire for your function or event.

Every day, across all of our spaces, we host a wide range of classes, activities and events.

To keep up to date with what's happening in your local community, and across the entire Ballina Shire, join us on Facebook to receive all the latest news.



facebook.com/  
bsccommunityspaces



To find out what is happening in your local community space follow our Facebook page, or download a copy of our "What's On" newsletter at [ballina.nsw.gov.au/communityspaces](http://ballina.nsw.gov.au/communityspaces)





## current exhibitions



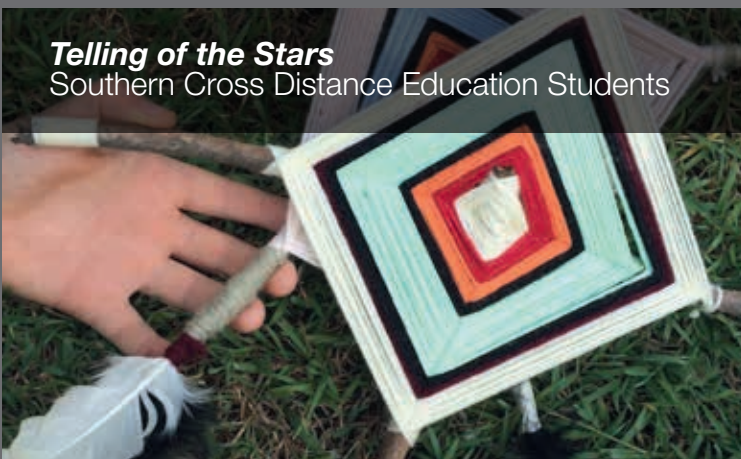
**Annual NAIDOC Exhibition** Group Show

This vibrant exhibition coincides with NAIDOC Week celebrations featuring a diverse selection of works by Aboriginal artists living and working in the Northern Rivers region. This year's NAIDOC theme 'We all Stand on Sacred Ground: Learn, Respect and Celebrate', is an opportunity to pay respects to Country; honour those who work tirelessly on preserving land, sea and culture and to share with the nation the stories of many sites of significance or sacred places.

**Exhibition Dates:** 24 June – 19 July 2015

**Launch Event:** Thursday 25 June 2015

*Image: Dubai, Saltwater Women Circle (print and weaving work detail)*



**Telling of the Stars**  
Southern Cross Distance Education Students

The *Telling of the Stars* installation is a collection of small star like woven forms created by female students from the Southern Cross Distance Education program with Lismore based artist Penny Evans. The first twinkle of this collaborative project began as an idea to link students from the program with artist Penny Evans in a series of mentor based creative workshops.

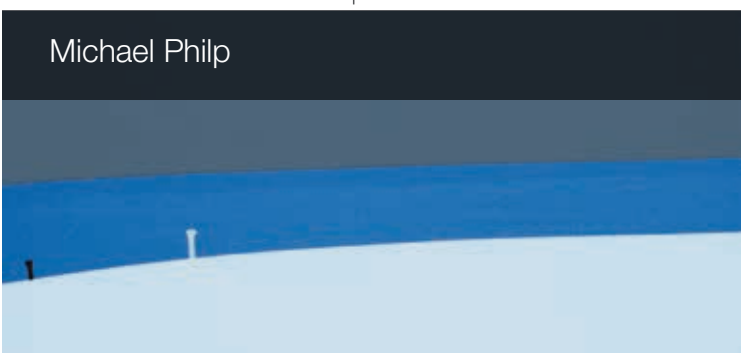
Visitors can create and add a star to the installation in a workshop with Penny Evans.

**Exhibition Dates:** 24 June – 19 July 2015

**Launch Event:** Thursday 25 June 2015

*Image: Making Stars, Penny Evans workshop*

## art at the airport



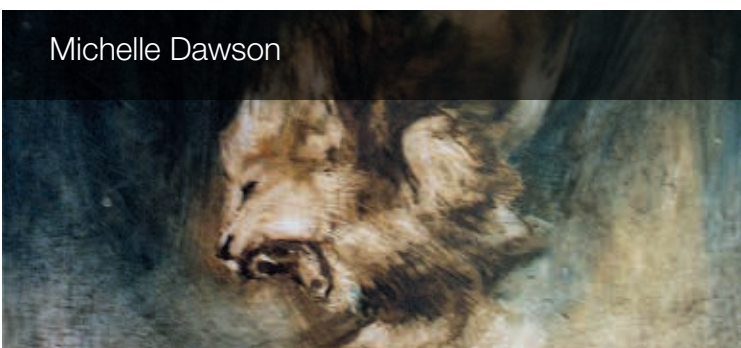
Michael Philp

Michael Philp's works are a personal history and represent his relationship with his people, home and country. Michael's home is the Caldera. The land that stretches from beneath Wollumbin following the Tweed River down from Murwillumbah to Cudgen, Chinderah, Fingal and Duranbah and out to the ocean.

The path of the river maps the home of Michael's people.

**Exhibition Dates:** 6 May – 1 July 2015

*Image: Spotting for Sea Mullett, Michael Philp*



Michelle Dawson

Dawson combines a fascination with creatures, mythologies and night skies to create paintings inspired by the heavens. Reimagining the constellations identified by western astronomy with antipodean native animals, these works acknowledge our unique wild life, past and present as a confluence of myth, history, astronomy and artistic license.

**Exhibition Dates:** 1 July – 2 September 2015

*Image: Grampians Lion, Michelle Dawson*





# upcoming exhibitions

**From a Northerly Aspect**  
 Peter Mortimore and Brian Cook

The Northern Rivers is an inspirational place for artists. Its beaches, blue water, flowing rivers, rolling hills and rugged ranges provide endless subjects. Its skies, from sunlit dawns to vermillion sunsets, provide dramatic backdrops; each new day brings new inspiration. Brian Cook and Peter Mortimore's works are inspired by the colour and sumptuous beauty of the Northern Rivers.

**Exhibition Dates:** 22 July – 30 August 2015  
**Launch Event:** Thursday 23 July 2015

Images: *Surging Tide*, Brian Cook; *Hillside Shadows*, Peter Mortimore

**The Bundjalung Series** Anthony Short

Formed by a love of native fauna and flora, this earthy exhibition highlights the precious raw beauty of the Bundjalung region. The works presented in this stunning exhibition are a series of original prints created from beautifully detailed woodcuts made by the artist while on location in the coastal beaches and healthlands of the local area.

**Exhibition Dates:** 2 September – 27 September 2015  
**Launch Event:** Thursday 3 September 2015

Image: *Banksia Bird*, Anthony Short

**Sweet As** Local Primary School Group Exhibition

Life is so much sweeter when you're surrounded by sugarcane!

The Sweet As exhibition is a combined collection of artworks created by students from Empire Vale, Wardell, Cabbage Tree Island and Broadwater Public Schools.

The students' artworks reflect a sense of place and provide a colourful insight into life growing up surrounded by sweeping paddocks of sugar cane.

**Exhibition Dates:** 2 September – 27 September 2015  
**Launch Event:** Thursday 3 September 2015

Image: *Sweet As Lollipops*, Empire Vale Public School Students

hand-crafted by: L-R Chattral Jewellery; Natalie Cutcliffe; Ghost and Lola

hand-crafted by: Natalie Cutcliffe

hand-crafted by: L-R Sharon Steel; Joan Montalbetti

*bohemian romance*  
 in the Gallery Shop

The Gallery shop has a beautiful range of unique hand-made products created by local artists perfect for that special gift.

**nrcg**  
 northern rivers community gallery





## flat rock tent park

Want to escape for a few days but don't want to travel too far or be stuck in traffic, then look no further than Flat Rock Tent Park.

The Park is located between Ballina and Lennox Head alongside Angels Beach and is surrounded by coastal bushland. It is the ultimate beachside hideaway that caters for tents and camper trailers and boasts grassy sites, modern amenities and bbq facilities.

Flat Rock Tent Park offers the good old-fashioned camping experience of sitting around the campfire at night with the waves crashing in the distance.

*If this sounds like an experience you would like to have then give us a call 02 6686 4848 and talk to our friendly managers, David and Kellie or check out our website at [flatrockcamping.com.au](http://flatrockcamping.com.au).*



**Don't  
dispose  
of me yet**

Use this issue of Community Connect to wrap kitchen waste and dispose in the green organics bin.

## contacting your councillors

Councillors are here to represent your views.

Councillors may be elected in Wards, however each Councillor represents the entire community and can be contacted on any matter.

You can contact Councillors in person, by phone or email.

### A Ward



**Susan Meehan**  
phone 0431 685 666  
[smeehan@ballina.nsw.gov.au](mailto:smeehan@ballina.nsw.gov.au)

### B Ward



**Sharon Cadwallader**  
phone 0419 973 166  
[crsharonc@nor.com.au](mailto:crsharonc@nor.com.au)

### C Ward



**Paul Worth**  
phone 0428 280 082  
[pworth@ballina.nsw.gov.au](mailto:pworth@ballina.nsw.gov.au)



**Robyn Hordern**  
Deputy Mayor  
phone 0410 562 758  
[robynh@ballina.nsw.gov.au](mailto:robynh@ballina.nsw.gov.au)



**Jeff Johnson**  
phone 0438 677 202  
[jeffjohnson@ballina.nsw.gov.au](mailto:jeffjohnson@ballina.nsw.gov.au)



**Keith Johnson**  
phone 0407 435 573  
[kjohnson@ballina.nsw.gov.au](mailto:kjohnson@ballina.nsw.gov.au)

### Mayor



**David Wright – Mayor**  
phone 0415 965 403  
[davidwright@ballina.nsw.gov.au](mailto:davidwright@ballina.nsw.gov.au)



**Ken Johnston**  
phone 0437 601 715  
[kenj@ballina.nsw.gov.au](mailto:kenj@ballina.nsw.gov.au)



**Keith Williams**  
phone 0418 504 644  
[keithw@ballina.nsw.gov.au](mailto:keithw@ballina.nsw.gov.au)



**Ben Smith**  
phone 0415 482 412  
[bens@ballina.nsw.gov.au](mailto:bens@ballina.nsw.gov.au)



### COUNCIL CONTACT INFORMATION

**Ph:** 02 6686 4444  
**Fax:** 02 6686 7035  
**Email:** [council@ballina.nsw.gov.au](mailto:council@ballina.nsw.gov.au)  
**Web:** [ballina.nsw.gov.au](http://ballina.nsw.gov.au)

**Street Address:**  
40 Cherry Street, Ballina  
**Postal Address:**  
PO Box 450, Ballina 2478

**Office Hours:**  
8.15am to 4.30pm Mon-Fri  
(excluding public holidays)

**After hours contact:**  
02 6626 6954

**Council's Community  
Access Points:**  
Meeting agendas and documents  
on exhibition can be viewed at  
Council's Customer Service Centre;  
Alstonville, Ballina and Lennox  
Head Libraries and Council's  
website [ballina.nsw.gov.au](http://ballina.nsw.gov.au)

**[ballina.nsw.gov.au](http://ballina.nsw.gov.au)**