

River Drive closure for Carrs Bridge replacement

Ballina Shire Council is replacing Carrs Bridge on River Drive, Keith Hall. The bridge is located south of Carrs Lane and north of Empire Vale Public School.

The new bridge will increase the existing load carrying capacity, which is essential during cane harvesting seasons, and improve road user safety.

The works will start on Wednesday 6 January 2021 and will take six weeks to complete, weather permitting. This will include the demolition and removal of the existing bridge structure, installation of foundation piles, followed by the installation of the new bridge abutments and deck.

Due to the constrained location of the project, River Drive will be temporarily closed to through traffic in the vicinity of the bridge works.

Road users and residents north of Carrs Bridge will need to access South Ballina and Keith Hall via the Burns Point Ferry, which operates from 5.30am to 12.30am daily. Access to Empire Vale, Patches Beach and Wardell will only be via the M1 Pacific Highway during the bridge works.

Overnight access for residents and visitors north of the bridge will be maintained via a one-lane detour track at the bridge works. This will only be open to light vehicles when the ferry is not operating, which will be between 12.30am to 5.30am daily, on Tuesday 9 February between 9am to 12noon, and if there are unplanned ferry closures.

Council has consulted with local bus and emergency services to ensure access is maintained for these essential services for the duration of the project. This includes the local school bus service.

Council understands the temporary inconvenience these works may cause, however, the renewal works are essential for the safety of road users, residents and the wider community.

For project information visit **ballina.nsw.gov.au/CarrsBridgeReplacement**

For road status information visit **myroadinfo.com.au**

Media Spokesperson	Paul Crozier, Works Engineer Emma Browning, Operations Engineer 1300 864 444
Authorised By	John Truman Director – Civil Service
Distribution	Local media

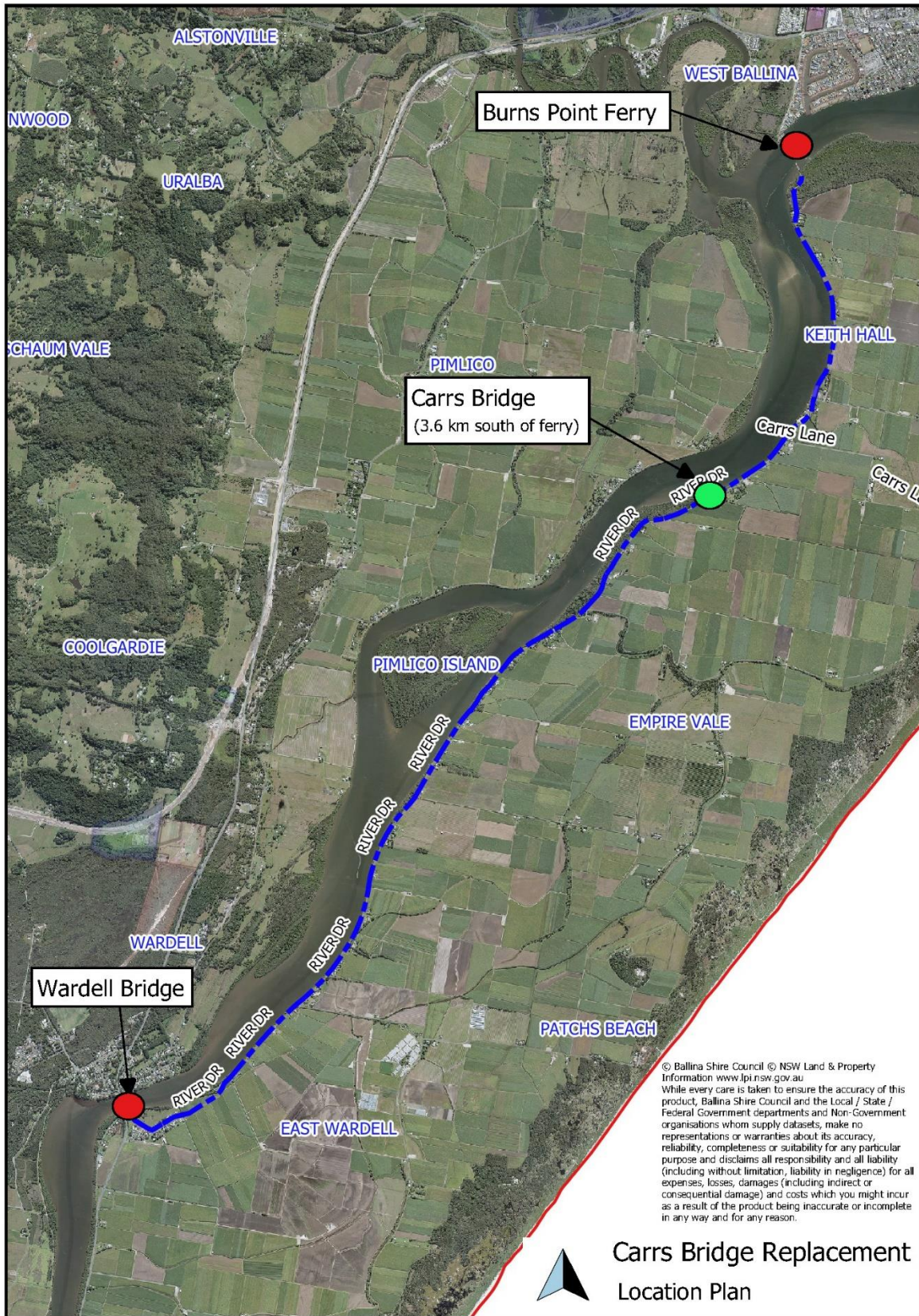


Image: River Drive will be temporarily closed to through traffic in the vicinity of the bridge works, south of Carrs Lane and north of Empire Vale Public School.