

Appendices

Plan of Management

Hampton Park

Ballina

Appendix I	Administrative History
Appendix II	Local Histories
Appendix III	Photographs – July 2004
Appendix IV	Public Exhibition Notice
Appendix V	Display Notice
Appendix VI	Adoption Notice

BLANK

APPENDIX I – ADMINISTRATIVE HISTORY

The following administrative history of Clement Park was provided by the Department of Lands in its letter of 24 August 2004 (DWS Doc No 638510).

Clement Park originally comprised Reserve 606 from Sale for Public Recreation (notified 22/3/1880 folio 1358 & 31/5/1880 folio 2634 – Revoked 11/9/1886 folios 6159 & 6162). The reason for the two notifications was due to an error in the description of the reserve in the first notification and which was subsequently rectified in the second notification.

A plan of part of Reserve 606 was completed on 27/4/1885 and catalogued as Crown plan 6.2339.

The current dedication of Clement Park was gazetted on 20/8/1886 folio 5652 for an area of 15 acres 2 roods 16 perches (6.31 ha) in two parts with Crown plan 6.2339 comprising the base diagram. The Municipal Council of Ballina was appointed as Trustee of the reserve by gazette notice of 20/4/1888 folio 2837. The status of Clement Park and Council's trusteeship has been uninterrupted since the date of the original gazettal although by gazette notification of 13/4/1995 folios 1983 & 1984, the corporate name of Ballina Clement Park Reserve Trust was assigned to the dedication.

Reserves Inspector Kentwall prepared a one page report and a diagram illustrating the uses on Clement Park in 1953.

The original area of Hampton (Clement) Park has been progressively reduced over time as a result of various actions. The positioning of Ballina Bowling Club within the land has resulted in three separate revocation actions. By gazette notification of 7/4/1966 folio 1503, Portion 231 (2150m²) was revoked. By gazette notification of 28/2/1975 folio 761, Portion 432 (5382 m²) was revoked and by gazette notification of 14/10/1983 folio 4747, Lot 440 DP 45984 (2816 m²) was revoked. Deposited Plan 45984 also had the effect of subdividing Portion 231 into Lots 441 & 442 with Lot 441 (470.5m²) being added back to the Hampton (Clement) Park dedication by gazette notification of 13/7/2001 folio 5397

The largest single parcel of the dedication was revoked by gazette notification of 28/11/1975 folios 5002 & 5003 and contained 3.157 ha being the whole of the area southeast of Cherry Street. On the same date, the whole of this area was added to the adjoining Dedication for Public School Purposes (Ballina High School).

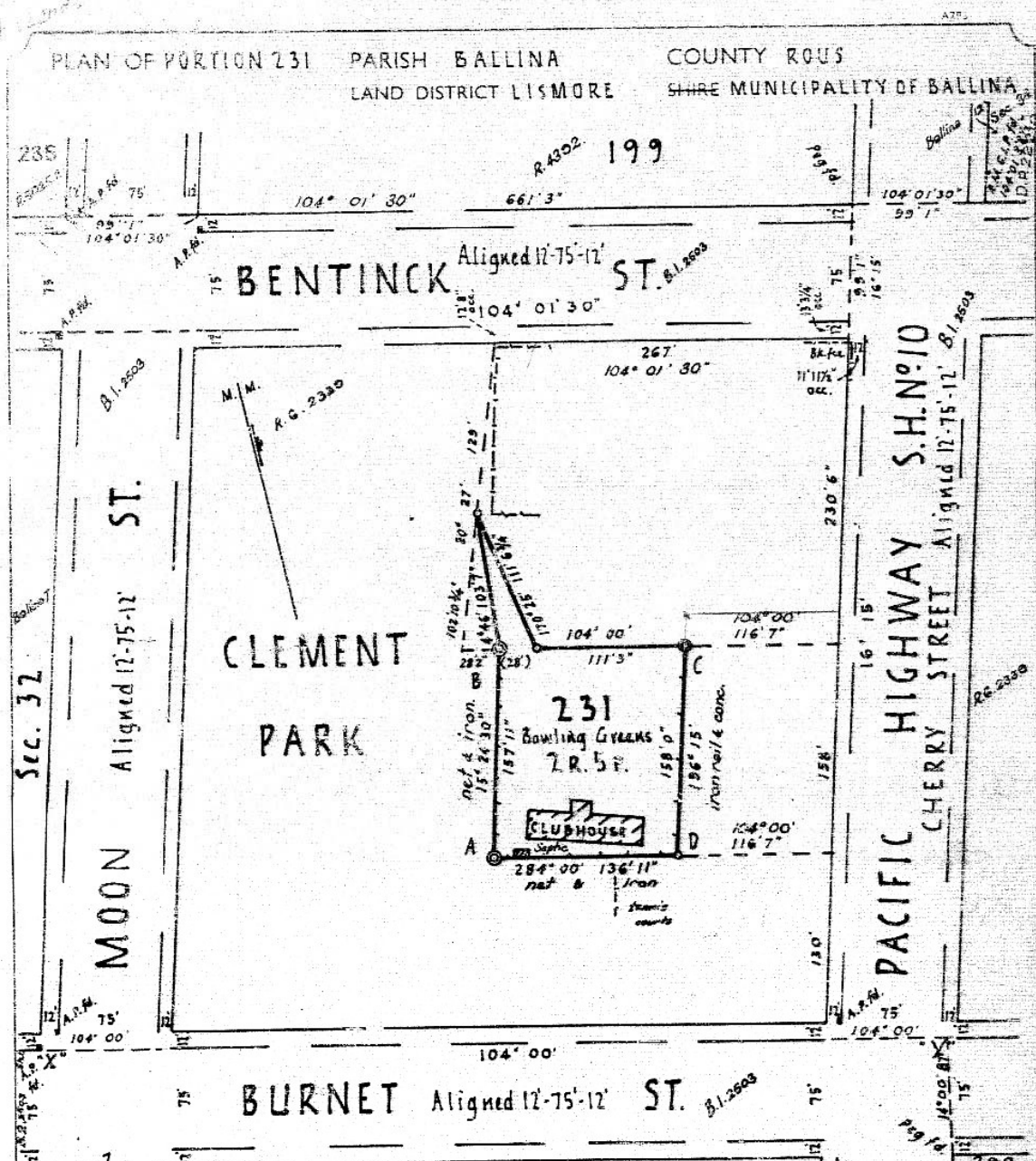
The current property description for Hampton (Clement) Park is Lot 476 DP 729095 and Lot 441 DP 45984.

New South Wales Crown Land Administrative Maps
Extract from Town of BALLINA, Edition 1
from File: 10745701.sid



Acknowledgement: This material has been reproduced from a digital photograph made by the Land Information Centre of a map held by the State Records Office of NSW and is made available courtesy of the New South Wales Government

Date of Map – September 1887 (Map in use between 2 November 1887 and 23 August 1916)



Surround Area: 0.5333acs.
REFERENCE MARKS

CORNER	BEARING	FROM	DISTANCE	NO. ON TREE
A.	104° 00'	Drill Hole & Wings in Conc.	G.I. PIPE 1' 6"	231
B.	105° 00'	Drill Hole & Wings in Conc.	2.11.6 1' 6"	231
C.		Drill Hole & Wings in Conc.		231
D.		Peg on Corner		231

SCALE 100 FEET TO AN INCH
All measurements shown in Feet
AZIMUTH TAKEN FROM S.S.
FIELD BOOK 5044 PAGES 9

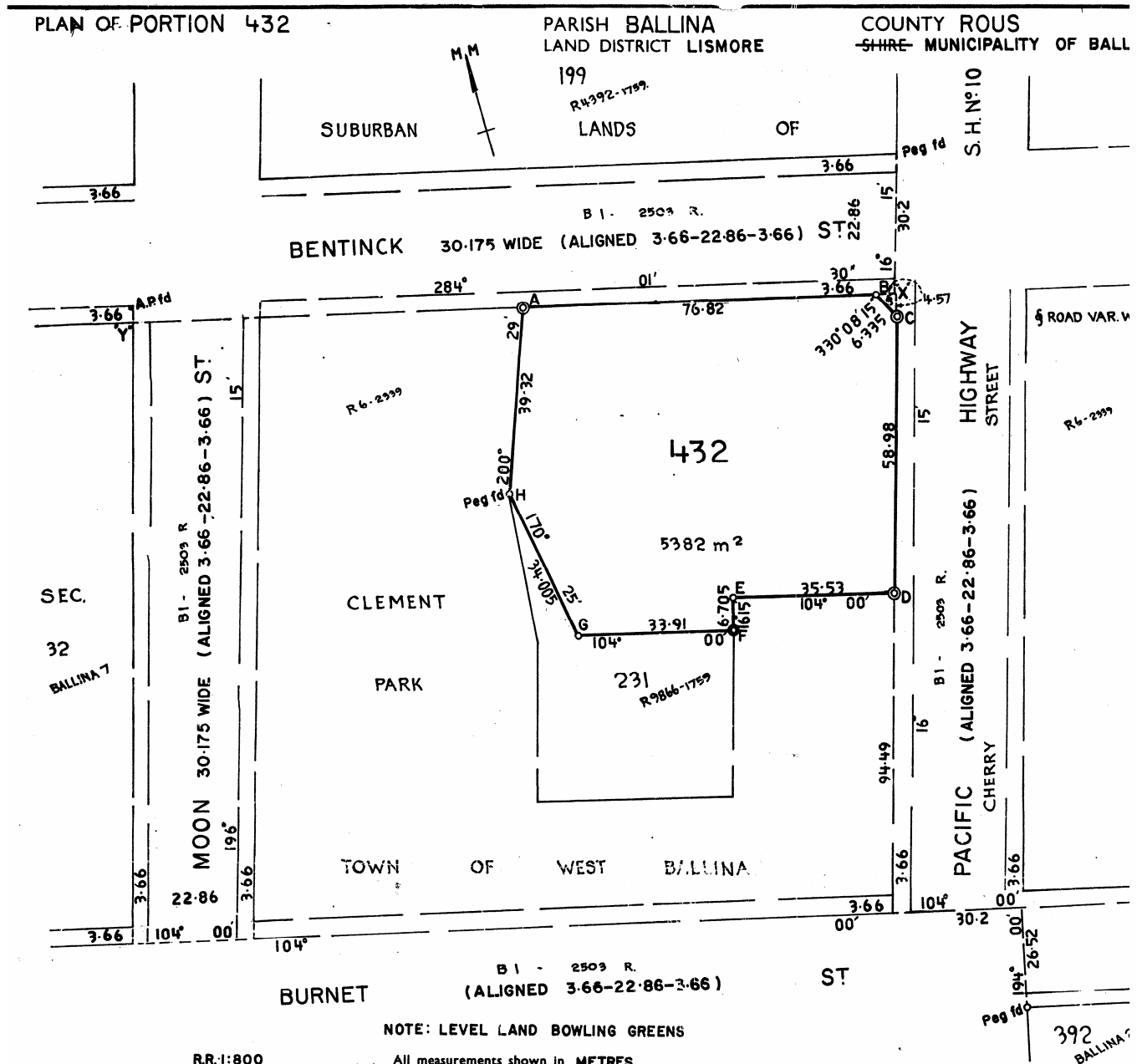
Robert Chisholm Hosie
of HOSE, HOE & BUTLER, LISMORE
a Surveyor registered under the Surveyors Act, 1929-1946, hereby
certify that the survey represented in this plan is accurate and has
been made by me under my immediate supervision in accordance with
the Survey Practice Regulations, 1933, and the special requirements
of the Department of Lands and was completed on 17.12.1965.
Signature: *Robert Chisholm Hosie*
Surveyor registered under the Surveyors Act, 1929-1946.

Partly Cancels R.G. 2329.
Within: Suburban Boundaries of the Town of West Ballina Notified 1st June 1901.
Dedication for Public Recreation Gaz. 20th August 1886.
Portion 231 - Special Lease 1963-15, the Trustees of the Ballina Bowling Club.

Checked & Charted: *W. J. ...* 17.11.65
Plan Approved: *W. J. ...*
Authorised Officer: 23.11.1965

Ten. 64-1927
PAPER NO. L863-9491
PLAN CAT. NO. R 9866-1755.

STANDARD COPY



CANCELS PART PLAN R6-2392

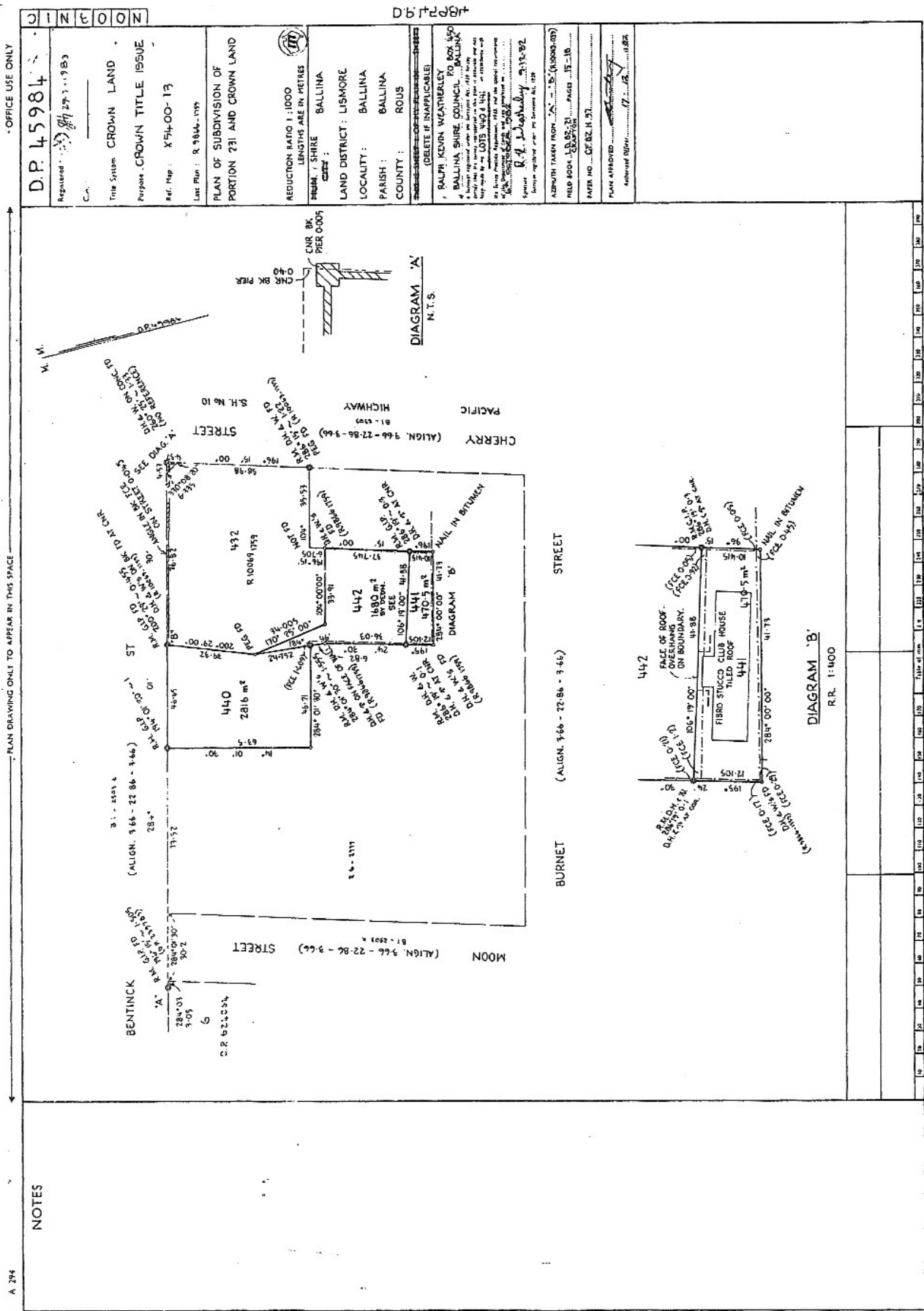
CORNER	BEARING	FROM	DISTANCE	MARKS	NO. ON
A	200° 29'	GI PIPE	0.455	DRILL HOLE & WINGS IN CONC	
B				PEG ON CORNER	
C				PEG ON CORNER	
D	286° 15'	D.H&W ⁵	1.1	PEG ON CORNER	
E	286° 15'	D.H&W ⁵	1.22	PEG ON CORNER	
F				DRILL HOLE & WINGS	FD.
G				CORNER NOT MARKED	FD.
H				PEG ON CORNER	FD.

AZIMUTH TAKEN FROM X-Y
FIELD BOOK 372 PAGE 30

I, **ATHOL JAMES EDWARDS**, of RIVER ST. B.
a Surveyor registered under the Surveyors Act, 1929-1946, hereby
certify that the survey represented in this plan is accurate and has
been made by me under my immediate supervision in accordance with
the Survey Practice Regulations, 1933, and the special requirements
of the Department of Lands and was completed on 11th March 1974.

Signature: *A. Edwards*
Surveyor registered under the Surveyors Act, 1929-1946.
CHECKED & CHARTED 22/10/74
PLAN APPROVED 22/7/74
Authorized Officer: *[Signature]* 19.74

ORIGINAL PLAN



OFFICE USE ONLY

PLAN DRAWING ONLY TO APPEAR IN THIS SPACE

A 294

NOTES

ISSUED REFERENCE SS/ RP 101

D.P. 45984

BLANK

APPENDIX II – LOCAL HISTORIES

Development of the Ballina Bowling Club - Recollections of Brian Riley
Recorded by David Kitson in a telephone conversation on 20 May, 2003. (ph 6686 3197)

Brian Riley indicated that the development of the Bowling Club was first formed in 1909 and Green no. 1, on the corner of Bentinck Street and Cherry Street, developed with volunteer labour. A small clubhouse/shed was built around 1911-12 and a second green was built in 1916 or 1918.

He indicated that all the Club records between 1918 and 1936 have been lost. He is aware that a cottage was moved onto the site and used as a clubhouse for a period. In 1952 a third clubhouse was erected.

He first became a member of the Ballina Bowling Club in 1966 at the time he had a mixed business in Bentinck Street. He worked 7 days a week and it was some time before he was able to get in a game of bowls.

In 1960 the Women's Green (subsequently known as green no. 4) was developed behind the Bowling Club in conjunction with the Women's Club House. Ballina Municipal Councillor, Bert Barlow, took a major role in organising the construction of this green using voluntary labour. The Women's Club House was officially opened on 17 December, 1960.

At the time he became a member in 1966, there was one permanent bar tender and one permanent green keeper, with a lot of work still being carried out by club members on a voluntary basis. Brian became a committee member of the club during elections after the contract to proceed with the new clubhouse building had been signed in 1973. At this time it was realised that the club membership would have to be expanded to allow social (non playing) members.

The current club was built in 1974 and replaced the previous club built in 1952. This club has since been extended.

The use of the grassed area, in the western part of Hampton Park and the area where Green No. 3 and the western tennis courts (ie west of the internal access road/tennis club) were subsequently developed, was used as a cricket field and possibly 2 soccer fields. The sporting use of this area was abandoned some time between 1977 and 1980 when Kingsford Smith Park became available.

In 1982 the Men's Bowling Club and the Women's Bowling Club joined.

In 1983-1984 agreement was reached to extend the Club's lease area to allow Green No. 3 to be constructed, a green keepers shed and some car parking. This was approved in exchange for the re-incorporation of the Women's Club House back into the Hampton Park Reserve. This shed had been used for storage for some time prior to its conversion to the tennis clubhouse.

Green No. 3 was constructed next to the two greens fronting Bentinck Street. This occurred when Hory Campbell was president, who insisted that this green be built with voluntary labour, instead of engaging professionals. He claims that this was subsequently proved to be a mistake, as the green was not very good for many years.

Club membership in June- July 2002 was 3500 and this has increased to 5000 in 2003.

Notes from telephone interview of Graham Steel of 18 Brighton Street, East Ballina (6686 7780) on 28 August, 2003 by David Kitson, Town Planner with Ballina Shire Council.

Graham Benson Steel, Surveyor and a long time resident of Ballina, indicated that prior to the major development of Kingsford Smith Reserve in 1978, the corner of Owen and Bentinck Streets was used for playing fields, which were about half a metre below the present level and were often wet. Light aircraft occasionally used a narrow strip parallel to Owen Street as a runway. He indicated that the reference in "Over Three Bridges" by Cliff Murray (pg 275) to the Ballina Rugby League arranging a function for the first official use of the block on October, 1975 may be a reference to the use of these fields for junior games.

Graham played Rugby on Clement Park in 1976, which he indicated had poor drainage and was susceptible to inundation. Clement Park / McDonald Park were used for all cricket, hockey, rugby league, rugby union and athletics up until about 1977. These parks were still public parks up to then. Saunders Oval was not developed at this time and the only other sports fields were at Hampton Park where there was one cricket field, which was possibly used in winter as two soccer fields and the junior football fields on Kingsford Smith Reserve.

He recalls that the Department of Education took over Clement Park, McDonald Park and the Burnet Road Reserve on the southern side in about 1977 and that Clement Park was used for senior football under duress until games were transferred to Kingsford Smith Reserve in 1978.

A public meeting was held in August 1976 that was attended by the majority of the Ballina sporting groups and the Ballina Sports Club was formed. He was the Treasurer, with John Savage the President and Gae York the Secretary.

This Club was formed with the intention of developing Kingsford Smith Reserve as a multi-purpose sports facility. The Greyhound Racing Club also participated in the initial stages, but it transpired that a greyhound track could not be accommodated on Kingsford Smith Reserve.

The Ballina Sports Club ran a Sportsman's Cabaret at the Ballina Bowling Club, a Sports Queen Competition and a Christmas Carnival behind the Catholic School in Crane Street as fund raisers and raised in the order of \$20,000.

At a fundraising dinner at the RSL Club, each sport invited a guest sportsperson, most of whom were current or past State or National representatives. Rex Mossop, former dual Australian Rugby and Rugby League representative, was Master of Ceremonies.

In the day preceding the Bowling Club Dinner, dozens of local swimming enthusiasts joined Channell Swimmer Des Renford in a mini marathon swim from Wardell to the Ballina Sailing Club. Local rugby players Eoin Johnston and Mike Evans stuck with Renford all the way.

Graham designed the initial layout for Kingsford Smith Reserve, which was modified along the way and which was subsequently drawn up by Council's Graeme Gordon. He agrees with the reference in "Across Three Bridges" (pg 274) that the first stage of Kingsford Smith Park complex started on 25 June, 1977. The development of Kingsford Smith Park occurred over an 18 month period and was carried out by volunteers that included Council workers with Council equipment. Work was mainly carried out on weekends. Fill was initially obtained from North Creek at low tide adjacent to the end of Owen Street and trucked the short distance to Kingsford Smith Reserve. This phase lasted about 3 months. It was then decided to create an artificial lake and to use the extracted material as fill in order to speed up construction.

An amenities block was built where the Seagull Leagues Club is presently located in the summer of 1977-1978 with volunteer labour as part of a brick laying competition. The main oval on Kingsford Smith Reserve was used for both Rugby League and Rugby Union until Rugby Union moved to Quays Reserve in 1984.

In later years the Netball Club under the guidance of Ross Reid improved the southern area of the Park with sealed courts and an amenities block. Men and women's hockey were also regular users of Kingsford Smith Park until the centralisation of this sport to Lismore.

Bernice Kentwell and her Garden Club helpers established the gardens at the south eastern end of the reserve, complementing the passive recreational value of the constructed waterbody.

An exercise circuit was also constructed around the perimeter of the complex, however this has since fallen into disuse.

Graham indicated that work on Kingsford Smith Park was designed, approved and carried out prior to the introduction of the Environmental Planning and Assessment Act and the various planning instruments and policies that would almost certainly preclude such a worthwhile community project being carried out now.

Notes from telephone interview of Doug Sharpe of 17a Burnet Street, Ballina (6686 8109) on 29 August, 2003 by David Kitson, Town Planner with Ballina Shire Council.
--

Doug Sharpe is a long time resident of Ballina. He was the President of the Ballina Rugby League Club for a number of years in the 1970's and subsequently served the role of Treasurer.

He indicated that Clement Park was taken over by the Department of Education while Ray Hughes was Headmaster of Ballina High School.

The Club erected a scoreboard at Clement Park while the Principal, Purse Tester, was away. This sign contained sponsorship for Marlborough Cigarettes which created a controversy.

Pat Paterson, the Headmaster of Ballina High School, ordered the Rugby League Club off of Clement Park after it played a game in wet conditions and churned up the field. The school was due to hold a knock out match the following week but this had to be transferred to Lismore because of the condition of the field. They lost this game. The Club was only given a couple of weeks to vacate Clement Park.

Tony Keollner shifted the sign and the fence from Clement Park to Kingsford Smith Oval.

He will be making further enquiries about the date when Rugby League was expelled from Clement Park.



1956 Photo of Old Bowling Club – from Dept of Lands (File LB. 76/767)

History of the Ballina Tennis Club

During the 1930's the Ballina Tennis club on the corner of Burnett Street and Cherry Street consisted of two clay courts and a very small club house. The original club house is still in the same location and is now used by the coach and for storage. These two clay courts plus a court at the hospital and the high school were the only courts in Ballina and were used for all social tennis and inter town competitions.

By the end of the 1950's the courts had been upgraded to three bitumen courts. These proved unsuccessful due to cracking so during the 1960's once again the club expanded and had five green cement courts.

Stuart Hagan was president from 1960 to 1974 and continued to develop and foster tennis in the town. Money raising activities were common and weekly raffles at the club with donated prizes helped to raise finances to pay off loans involved in the expansion of the club.

Esme Bond, June Ianna and Enid Holmes were responsible for much of the fund raising.

During Jock Farquarson's presidency the tennis club purchased the women's Bowling club building from the Bowling Club. The Bowling Club gave the tennis club an interest free loan of \$20000 to the Tennis Club to enable them to purchase the building.

Peter Ireland's presidency over the next ten years from 1984 to 1993 saw many changes to the Ballina Tennis Club. Land was acquired from Hampton Park to extend the tennis complex to eleven courts. These courts were also green cement but during the late 80's the courts were all surfaced with mod grass which is the surface still in use today.

It is interesting to note that the expansion of the tennis complex was made possible by a loan from the Ballina Shire Council and in 1987 the interest rate for that loan was 18.75%.

John Whitty took over the presidency in 1994 from Ron Ison who only held the position for one year but was responsible for major changes to the administration and organization of the club. Sadly Ron passed away in 1994.

The Life Membership of the Tennis Club has been granted to only a few. They are Teddy Ainsworth, Peter and Edie Ireland and Bill and Norma Cox.

Changes and expansion of the Ballina Tennis Club have occurred because of many dedicated members who have contributed their time and energy and continue to do so.

It is an exciting prospect that once again the Ballina Tennis Club is on the threshold of another expansion with the acquisition of the rest of Hampton Park. A further four courts will complete the complex.

The partnership that the tennis club has developed with the Ballina Bowling Club is beneficial to both organizations.

Croquet, bowling and tennis now occupy what was formerly known as Hampton Park. Such a complex in the centre of the community of Ballina is a wonderful asset to the town's sporting amenities. This has only been achieved by the dedicated work over the years by the committee and members of those organizations.

Anne Marchment
Treasurer - Ballina Tennis Club

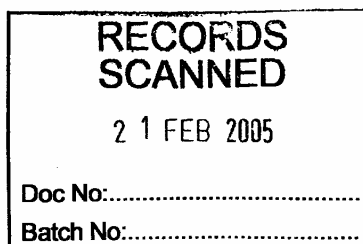
BALLINA CROQUET CLUB Inc.



C/- Ballina Bowling & Recreation Club, Cherry Street, BALLINA. NSW 2478

21 February 2005

Ms. Jillian Pratten
Manager
Open Spaces & Reserves
Civil Services
Ballina Shire Council
Cherry St
BALLINA NSW 2478




Dear Jillian

Re: Draft Plan of Management for Hampton Park.

Further to your lett of 2 February, attached is a brief history of this Club, as requested by you for inclusion in the above Plan of Management.

Should you require any further information pleas do not hesitate to ask.

Yours sincerely


LAWRIE SARGENT
HON. SECRETARY

President: P. Payne - Ph. 66 815994 Secretary: L. Sargent - Ph. 66 868201 Treasurer: L. Downs - Ph. 66 814392

BALLINA CROQUET CLUB INC. - A BRIEF HISTORY.

The Ballina Croquet Club was formed following a meeting held at the Ballina Municipal Council Chambers on Wednesday 13 May 1936, the Mayor presiding.

A croquet site was offered by the Ballina Bowling Club and the new Committee sought permission from the Ballina Council to secure the land for Croquet lawns and for playing. Permission was given almost immediately. The decision to build a Club House was made on 10 November 1936 and the Club House opened on 2 October 1937.

During the 2nd World War Club members formed a branch of "Bundles for Britain". They made clothes, knitted, etc., and also sought the assistance from other Clubs in Ballina. A total of 294 bundles were sent.

Important dates in the Club's history were :-

- 1945 - Affiliated with the Northern Rivers Croquet Association.
- 1951 - Mrs. Cummine was re-elected President, which post she had held for 10 years. She later donated a silver Tray known as the Cummine Tray, which is still contested for to this day. Efforts were in process to erect a fence around the Croquet lawn and erect shelter sheds.
- 1957 - Big improvements were made to the Club House with several of the ladies loaning the Club money so work could commence.
- 1960 - The Northern Rivers Croquet Association Gala Day was held in Ballina for the first time. This is a very important event and still continues with all Clubs attending.
- 1965 - The Club House was enlarged.
- 1974 - Following a debate it was agreed that men would be welcome to join the Club.
- 1985 - To accommodate a desire by the Bowling Club to expand their Club, the Croquet Club sadly relinquished their hard-won Club House. Their Croquet lawns were re-aligned and wedged into a smaller area. This was a case of co-operation on both sides with the Bowling Club offering to maintain the lawns and provide meeting space and afternoon tea facilities for the Croquet Club, along with a small store room for playing equipment. The Club's furniture, catering equipment etc. went to White Elephant sale.
- 1996 - The Club continued to grow and this year held a very successful 60th Birthday Celebration. As the lawns were under water following heavy rain no play could take place on that day. However, congratulatory letters were received from the Premier, local Parliamentarians and the Ballina Shire.
- 2000 - The Ballina Bowling & Recreation Club discussed the possibility of the Croquet players being re-located to

Page 2

BALLINA CROQUET CLUB INC. - A BRIEF HISTORY.

another site at Bowling Club's expense. This was agreed to, with the Bowling Club to build 2 lawns and a small Club House on a site to be finalised.

Before this could occur, the Bowling Club, installing new air-conditioning and extending their building in 2001, needed the Croquet Club's store room for an electrical switchboard. They offered a large lawn Locker for our equipment as a temporary measure for about 2 years.

Once again the Croquet equipment was moved. Each move has necessitated the removal of more Club property into private homes and Honour Boards, trophies and archives are scattered about Ballina.

Members of the Croquet Club to this day remain keen to see the Club progress, and hope one day to have another chapter to write on the progress of the Club.



LAWRIE SARGENT

HON. SECRETARY

21 February 2005.

APPENDIX III – PHOTOGRAPHS – JULY 2004

BLANK



Photo 1- Tennis sponsorship sign viewed from Burnet St. adjacent to Cherry St.



Photo 2 - Tennis Sponsorship sign on Tennis Shelter.



Photo 3 - Tennis Shelter viewed from Burnet Street.



Photo 4 - Tennis Shelter viewed from Burnet St.



Photo 5 – Tennis Courts adjacent to Cherry St.



Photo 6 – Tennis Courts adjacent to Cherry Street.



Photo 7 – View across Cherry Street along Burnet Street.



Photo 8 – Tennis Club House view from internal access.



Photo 9 – Amenities and tennis shelter adjacent to vehicular access in Burnet St.



Photo 10 – Amenities & tennis shelter with Burnet St in background.



Photo 11 – Vehicular Access viewed from Burnet St.



Photo 12 – Vehicular Access viewed from Burnet St.



Photo 13 – Rear of the Bowling Club House.



Photo 14 – Croquet lawn with croquet shed.



Photo 15 – Croquet Lawn viewed from Cherry Street with Tennis Club House in Background.



Photo 16 – Croquet Lawn viewed from Cherry Street with Tennis Club House in Background.



Photo 17- View from end of tennis courts west along Burnet Street.



Photo 18 - Northerly view from Burnet Street with Moon St in Background



Photo 19 - Prohibition sign adjacent to Burnet Street.



Photo 20 - Fig Tree adjacent to Moon Street.



Photo 21 – View from corner of Moon & Bentinck Streets across Park.



Photo 22 – View from corner of Moon & Bentinck Streets across Park.



Photo 23 – Easterly view of drainage area between the Tennis Courts and the Bowling Club car park.



Photo 24 – Westerly view of drainage area between the Tennis Courts and the Bowling Club car park.



Photo 25 – Bowling Club Sign on Bentinck Street



Photo 26 – View of Bowling Club across Bentinck Street.



Photo 27 – View of Bowling Club House and Greens from Cherry Street.



Photo 28 – View from Bentinck Street of western most Green.



Photo 29– View of rear green from internal access road.



Photo 30– View of rear green from internal access road.



Photo 31 – Bowling Club car park and green keepers shed.



Photo 32– Western wall of Bowling Club viewed from car park.



Photo 33 – Plaque on Clements Park Entrance Archway.



Photo 34 – Plaque on Clements Park Entrance Archway.



Photo 35– Entrance Archway to Clement Park on eastern side of Cherry Street.



Photo 36 – View across Cherry Street to former Burnet Street Road Reserve.

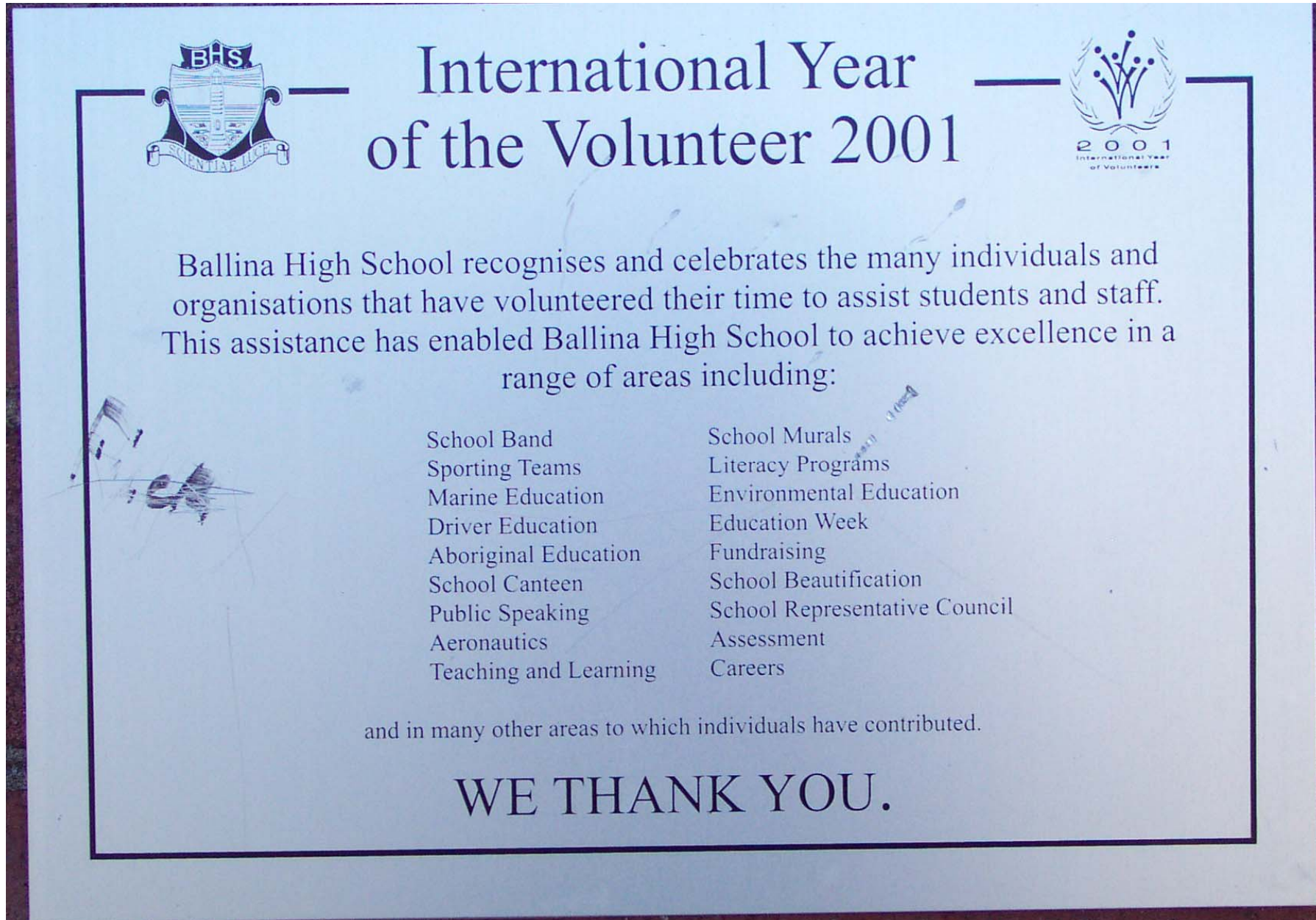


Photo 37 – Plaque on first post (western most) of Clement Park Memorial Gate.

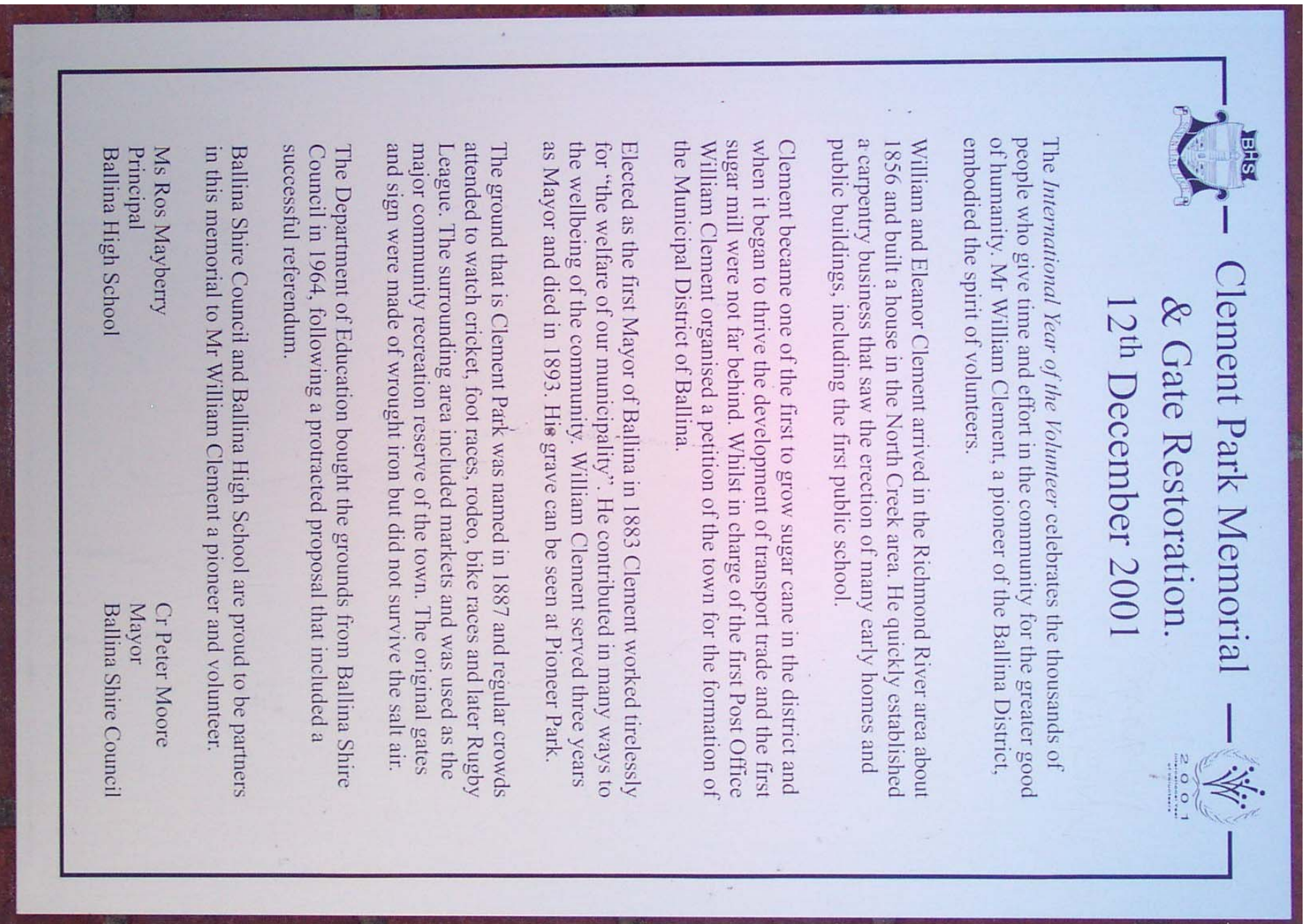


Photo 38 – Plaque on Second Post of Clement Park Memorial Gate.



McDonald Park



Mr Evan "Jim" McDonald

was an outstanding citizen and volunteer of the Ballina community. The park named in his honour is a fitting tribute to the many hours of volunteer work that "Jim" gave to his many interest groups.

Born in 1922 and educated at Ballina Primary School and Ballina High School, McDonald worked in the family cycle and sports store before joining the Services.

Some of the organisations which "Jim" assisted included Ballina Legacy, Ballina RSL Turf Club, Ballina Ex-Serviceman's Home, Ballina Businessman's Association, Ballina RSL Club, Ballina Public School P&C, Ballina Bowling Club, Ballina Tennis Club and Ballina Rotary Club.

It was his work on the Ballina Sports' Grounds Committee that saw him recognised by naming McDonald Park in his honour. Evan McDonald passed away in 1993.

Ballina High School is proud to honour an outstanding volunteer in 2001, International Year of the Volunteer.

Photo 29 – Plaque on third post of Clement Park Memorial Gate.

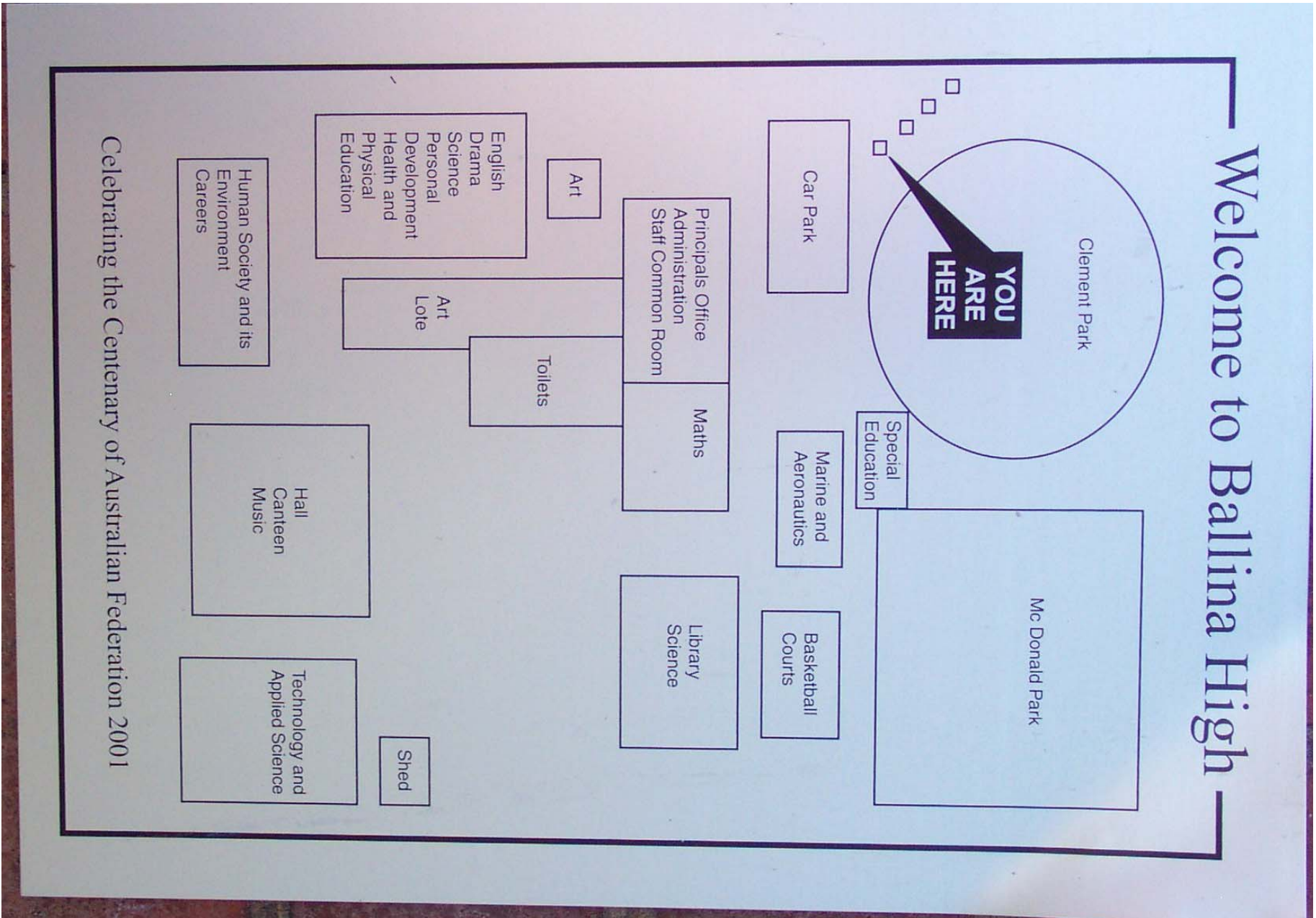


Photo 40 – Plaque on forth post (eastern most) of Clement Park Memorial Gate.

BLANK

APPENDIX IV – PUBLIC EXHIBITION NOTICE

DEPARTMENT OF LANDS

PLAN OF MANAGEMENT FOR CROWN LAND
DIVISION 6 OF PART 5 OF THE CROWN LANDS ACT 1989
AND CLAUSE 35 OF THE CROWN LANDS REGULATION 2000

A draft Plan of Management has been prepared for the Crown land described hereunder, which is under the trusteeship of the Ballina Clement Park Reserve Trust.

Inspection of the draft plan can be made at:

1. Department of Lands
76 Victoria Street, Grafton NSW 2460
2. Ballina Shire Council chambers
Cnr Cherry and Tamar Streets, Ballina NSW 2478
3. Ballina Public Library
Cnr River and Norton Streets, Ballina NSW 2478

during normal business hours.

Representations are invited from the public on the draft plan. These may be made in writing for a **period of 28 days commencing from 7 February 2005** and should be sent to the Manager, North Coast, Department of Lands, Locked Bag 10, Grafton NSW 2460.

Tony Kelly, MLC
Minister for Lands

DESCRIPTION OF LAND

Land District: Lismore

Local Government Area: Ballina Shire

Parish: Ballina

County: Rous

Dedication 540004, notified in the *Government Gazette* of 20 August 1886 and comprising Lot 441 D.P. 45984 & Lot 476 D.P. 729095

Public Purpose: Public Recreation

File No: GF81 R414

Location: Hampton Park, Ballina

Publish in the Government Gazette on 4 February 2005 & Northern Star on 5 February 2005

BLANK

APPENDIX V – DISPLAY NOTICE

Exhibition

of the

Draft

PLAN of MANAGEMENT

for

Hampton Park

Ballina

EXHIBITION NOTES:

This exhibition has been arranged by the Department of Lands.

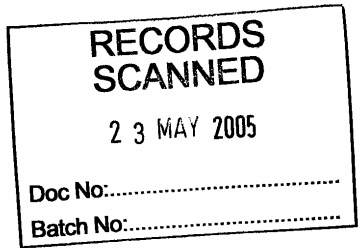
Any person who wishes to make a submission should do so in accordance with the Department's Public Notice (see attached)

BLANK

APPENDIX VI – ADOPTION NOTICE



The General Manager
Ballina Shire Council
PO Box 450
BALLINA NSW 2478



Crown Lands NSW
36 Marina Drive
PO Box 291J
COFFS HARBOUR NSW 2450
telephone (02) 6651 9985
facsimile (02) 6651 9975
www.lands.nsw.gov.au

Our Reference: GF81 H414
Your Reference: Hampton Park

Date: 19 May 2005

Attention: Mr David Kitson.

Dear Sir,

RE: Plan of Management for Hampton Park at Ballina

I hereby advise that the Minister has given approval to the adoption of the above document as a statutory Plan of Management pursuant to Section 114 of the Crown Lands Act 1989. The date of adoption was 13 May 2005.

Under Section 114 of the Act, Ballina Shire Council, as corporate manager of the Ballina Hampton Park Reserve Trust, is now required to implement the plan and may not undertake any operations on or in the reserve unless it is in accordance with the plan.

I would be pleased if you would forward two (2) copies of the final plan to our Grafton Office (PO Box 272 GRAFTON NSW 2460) for our records.

Please let me know if you need any further information.

Yours sincerely,


Wayne McIntyre
Crown Lands NSW
COFFS HARBOUR



BLANK