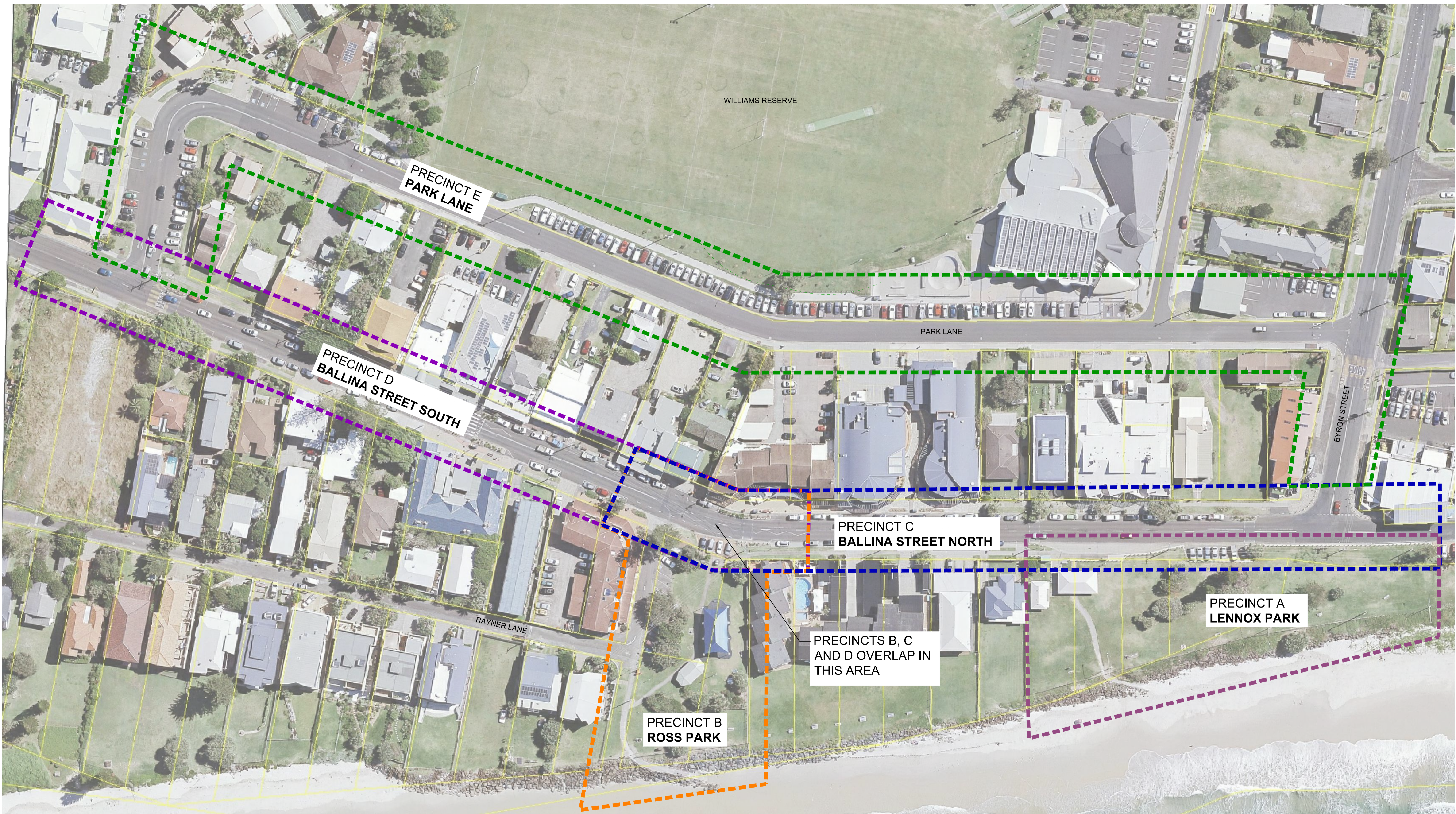


CHARETTE
INFORMATION

A



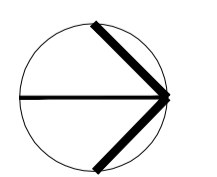
----- PRECINCT A: LENNOX PARK

----- PRECINCT D: BALLINA STREET SOUTH

----- PRECINCT B: ROSS PARK

----- PRECINCT E: PARK LANE

----- PRECINCT C: BALLINA STREET NORTH

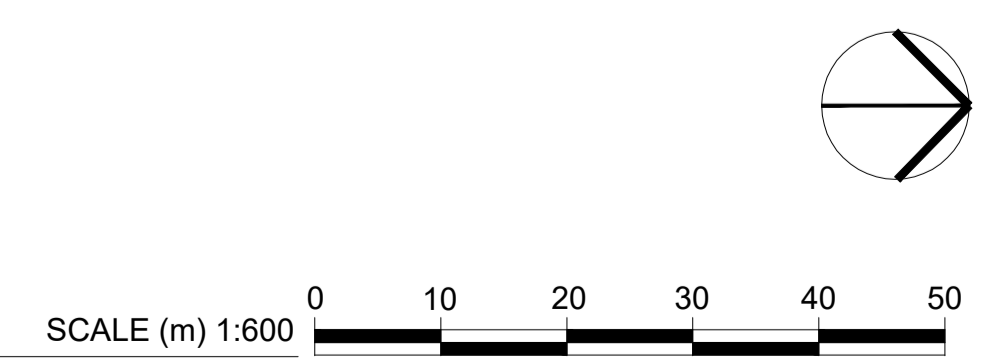




- - - - - OVERHEAD ELECTRICITY
- - - - - WATER
- - - - - RISING MAIN
- - - - - SEWER



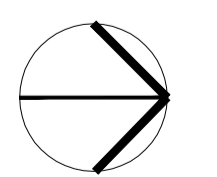
EXISTING SCENARIO
 MAJOR SERVICES_1:600 at A1

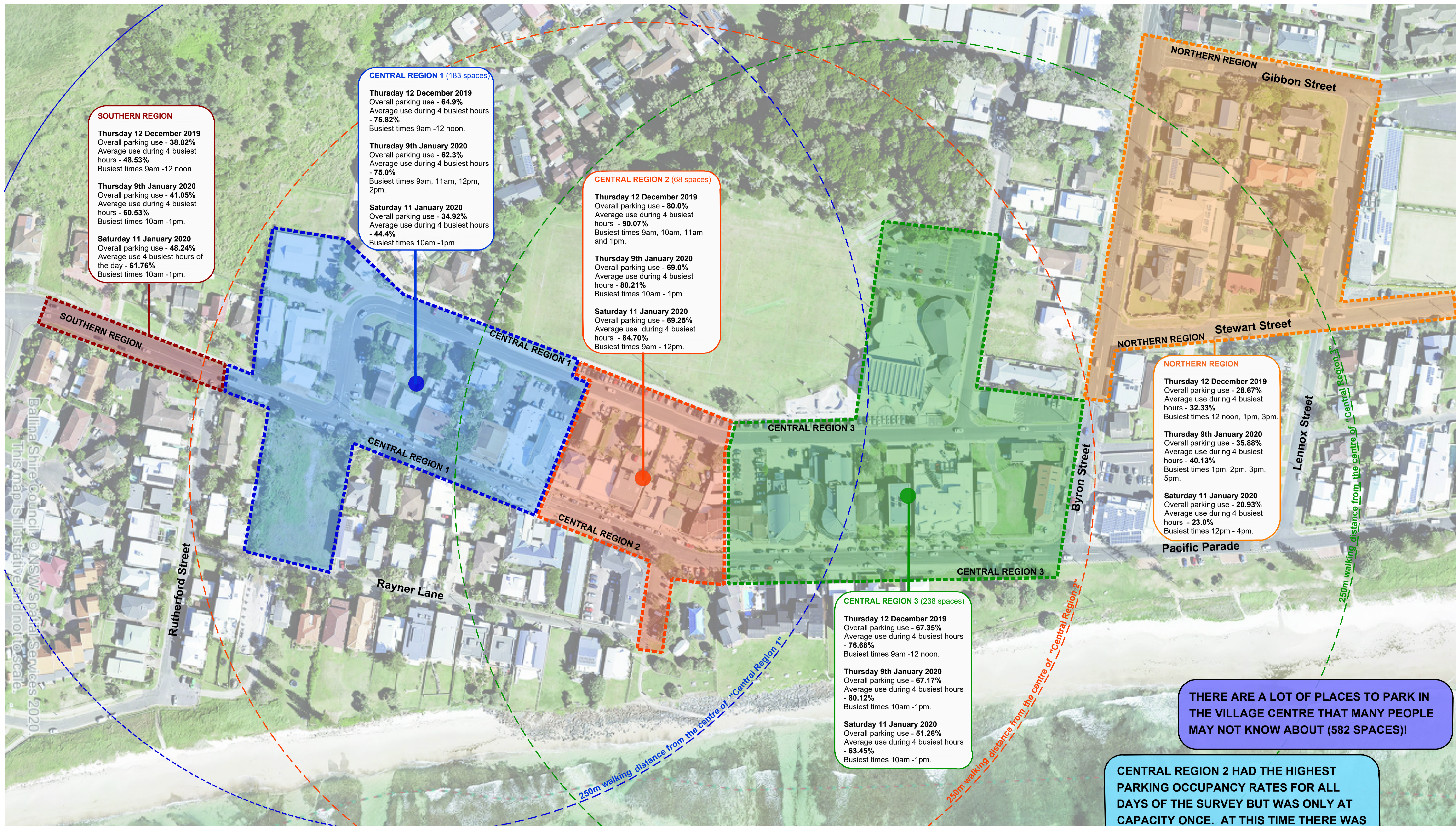




ACCESS VIA BEACH AND RAYNER LANE TO THE COASTAL SHARED PATHWAY AND LENNOX POINT (SIGNIFICANT CULTURAL, GEOMORPHOLOGIC AND VISUAL LANDMARK)

- EXISTING CROSS-BLOCK CONNECTION
- - - - - FORMAL ACCESS TO THE BEACH
- - - - - KERB CROSSING ACCESS CONNECTION





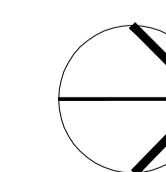
DATA GATHERED:

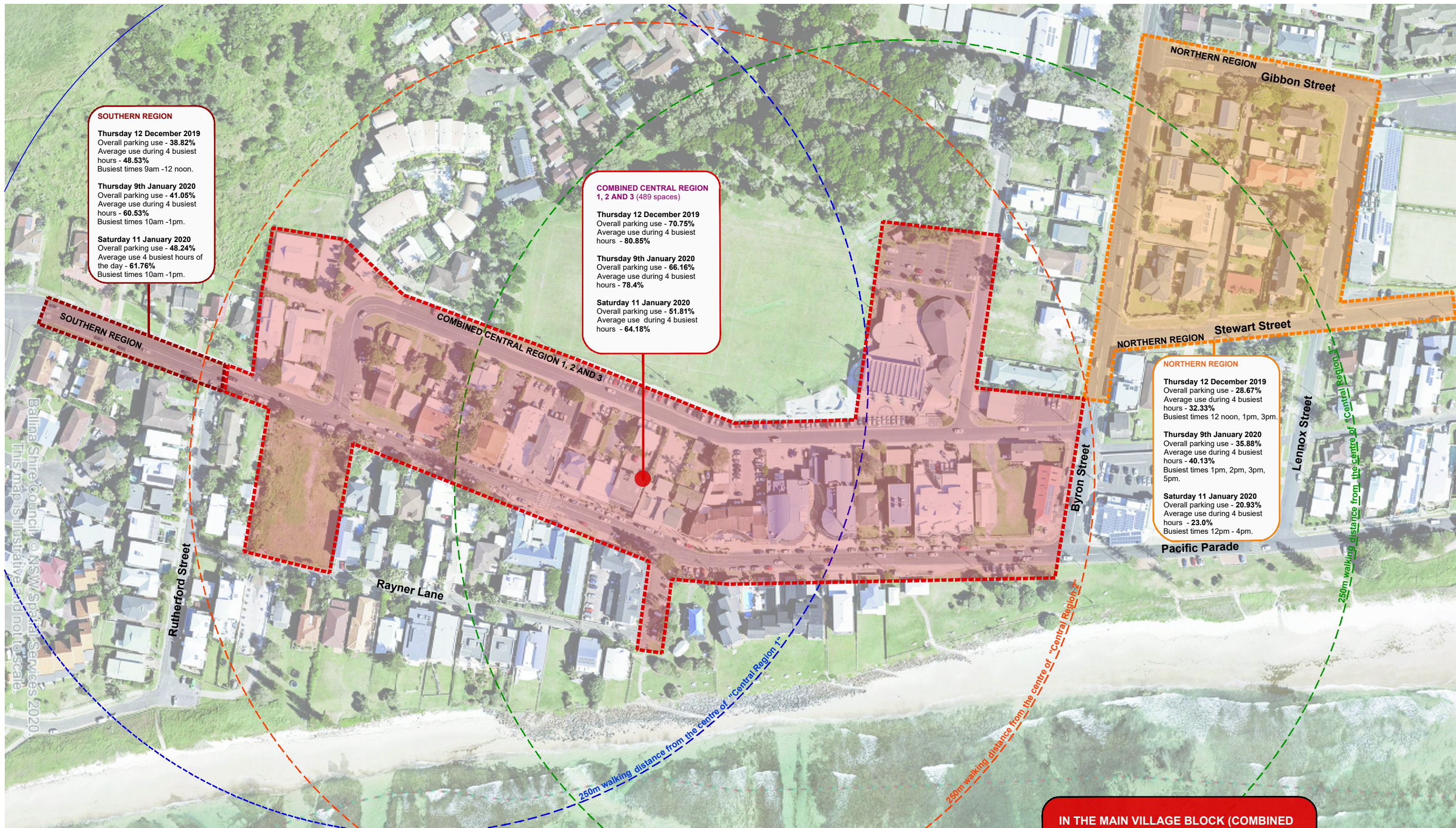
In order to better understand parking demand and capacity parking audits (of public spaces) were undertaken on Thursday 12 December 2019 (mid week during school term), Thursday 9 January 2020 (mid week during school holidays) and Saturday 11 January 2020 (weekend day during school holidays). Data was gathered between 8am and 5pm each day.

The occupancy by time data shown represents the average % of spaces occupied for the 4 busiest hours of the data collection period. A parking area is considered to be at capacity when it reaches 85% occupancy.

KEY COMMUNITY SURVEY FINDING:

The Lennox Head Community Survey conducted in 2018 told us that 25% of people said they are willing to walk 250-500m to reach the village centre, 29% are willing to walk 500m or more and less than 10% indicated that they were unwilling (or unable) to walk more than 50m.





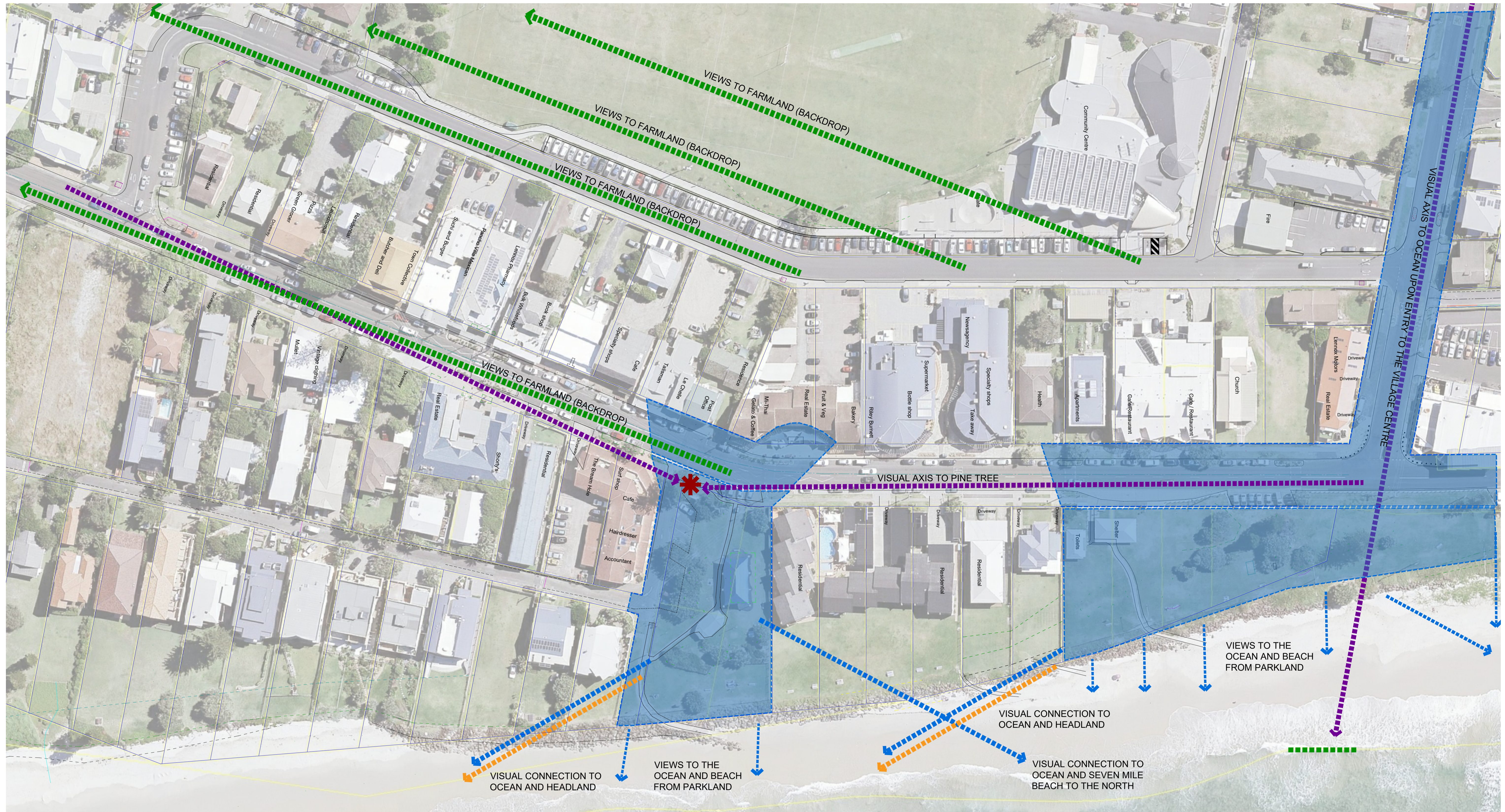
IN THE MAIN VILLAGE BLOCK (COMBINED REGIONS 1, 2 AND 3) THERE ARE 489 PUBLIC CARPARKING SPACES. AT NO TIME DURING THE STUDY DID CARPARKING IN THIS COMBINED PRECINCT REACH CAPACITY.

DATA GATHERED:

In order to better understand parking demand and capacity, parking audits (of public spaces) were undertaken on Thursday 12 December 2019 (mid week during school term), Thursday 9 January 2020 (mid week during school holidays) and Saturday 11 January 2020 (weekend day during school holidays). Data was gathered between 8am and 5pm each day.
 The occupancy by time data shown represents the average % of spaces occupied for the 4 busiest hours of the data collection period. A parking area is considered to be at capacity when it reaches 85% occupancy.

KEY COMMUNITY SURVEY FINDING:

The Lennox Head Community Survey conducted in 2018 told us that 25% of people said they are willing to walk 250-500m to reach the village centre, 29% are willing to walk 500m of more and less than 10% indicated that they were unwilling (or unable) to walk more than 50m.



- GROUND PLANE AREAS WITH EXISTING VISUAL CONNECTIONS TO THE OCEAN OR POTENTIAL FOR VISUAL CONNECTIVITY
- SIGNIFICANT VISUAL CONNECTION TO RURAL LANDS (BACKDROP)
- SIGNIFICANT VIEW TO THE HEADLAND
- VIEWS TO THE OCEAN OR BEACH
- PREDOMINANT VISUAL AXIS'
- PINE TREE IS A VISUAL STREETSCAPE LANDMARK WHICH CAN BE SEEN ON THE APPROACHES TO THE VILLAGE CENTRE