

Lennox Head Village Renewal

Community Information Session

July 2021

Lennox Head Village Renewal

Welcome

- Invitation sent to residents, businesses to provide information on the delivery of the Lennox Head Village Renewal Project
- What to expect from today
 - Purpose of the Lennox Head Village Renewal Project
 - Overview of construction stages
 - What construction will look like
 - Potential impacts during construction and how these will be addressed
 - Key contacts during construction
 - Respond to any questions and concerns
- Send questions via Zoom chat – bottom left of screen
- Future communications

Lennox Head Village Renewal

Project Purpose

- Support a growing community
- Address road safety concerns
- Develop a village centre for families and with a range of activities
- Improve public amenity
- Make better streets and places for people
- Maintain a low-key and social, coastal village

The future of Lennox Village Centre



1,953

responses to engagement activities received since 2018



30.5%

percentage of the Lennox Head population engaged since 2018 (Based upon 1,953 responses and a population of 6,407 - 2016 Census)



12 June - 10 July
2020
Public Exhibition
(additional 112 responses)



August 2020
Council adopts the
concept plans for
implementation

Design Charette – Community Led Design



KEY PLACE DIRECTIONS

Minimise negative impacts on the environment & maximise climate change mitigation

Offer a diversity of open spaces offering a wider range of activities and amenities for all ages /interests

Celebrate what makes Lennox Head Village special; environmental, social, economic & culturally

Re-balance priority between people and cars to make it safer and more comfortable for all

Create a physical environment that supports self sustaining community social activity and events

Support local business diversity and fine-grain shop frontages to build attractiveness of the centre for jobs & night time economy – support diverse housing choices

SLOW AND SOCIAL COASTAL VILLAGE

Celebrate our slower more relaxed lifestyle, pedestrian focus and safety for all ages and abilities

Celebrate and protect our unique ecosystem and environment, informal and unstructured, natural materials & vegetation, yet playful and relaxed

Places for the community to pause, connect and gather

Low scale, local, intimate & connected





Stage 1 incorporates Ross Park and services relocation in Ballina St

Lennox Head Village Renewal

Overall Staging

Stage 1 (2021) – Early Services Relocation and Ross Park Landscaping

Early works – services test pits, cultural heritage investigations, services relocations including electrical underground works, stormwater pollution mitigation, new potable water network, and Ross Park Landscaping

Stages 2 – 4 (2022) – Village Beautification – Ballina St

Road, stormwater and pavement reconstruction, installation of street furniture and landscaping

Future Stages – Lennox Park, Park Lane, Mackney Lane, Byron St

Upgrade pedestrian connections, road safety improvements

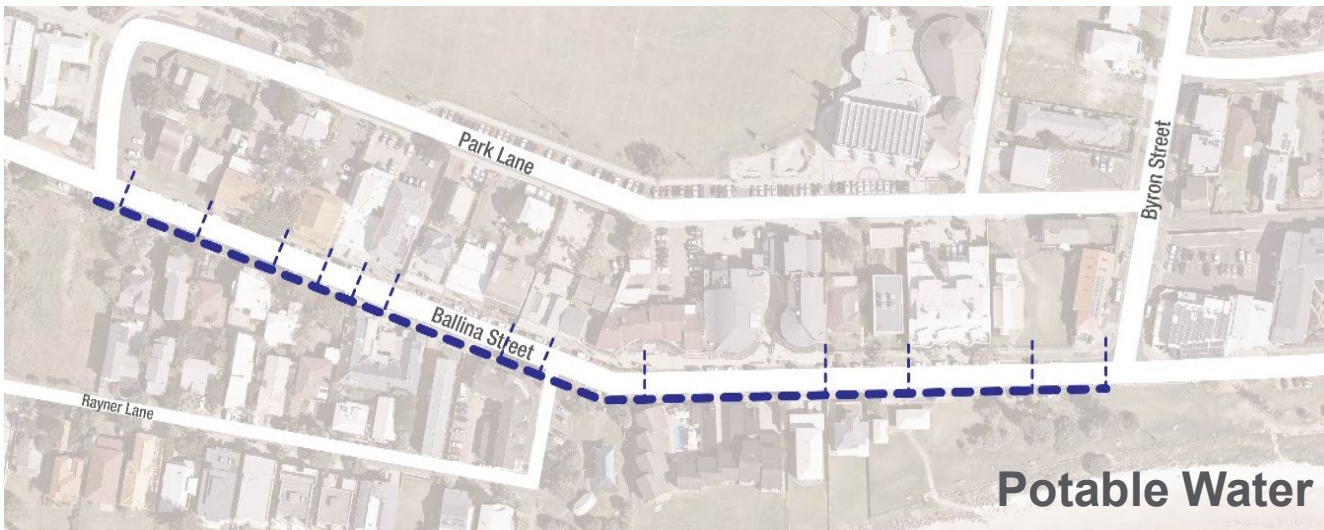
Lennox Head Village Renewal

Stage 1

Services

- Installation of new underground electrical network and connection to individual properties, removal of existing overhead electrical network
- Installation of stormwater gross pollutant traps in Ross Park and Lennox Park
- Landscaping of Ross Park
- Installation of new potable water trunk main by directional drilling (eastern side of Ballina St)
- Installation of new potable water service main by directional drilling (eastern side of Ballina St) and cross road connections by trenching.

Stage 1 – Services



Stage 1 – Services



Stage 1 – Ross Park



- New covered play equipment
- All access carousel
- Single unisex toilet facility
- New shade shelters
- Nature play
- New paths and turf
- Observation area

Stages 2, 3 & 4 - Ballina St Main Works

Commencing - Quarter 1 2022

Road works

- Demolish existing road and kerb, rebuild & adjust levels
- New kerb and channelling
- New road surface
- Raised thresholds at Park Lane and Byron St intersections
- New pedestrian crossing
- Central Hub - Shared pedestrian zone

Stormwater

- New stormwater mains and connection to properties

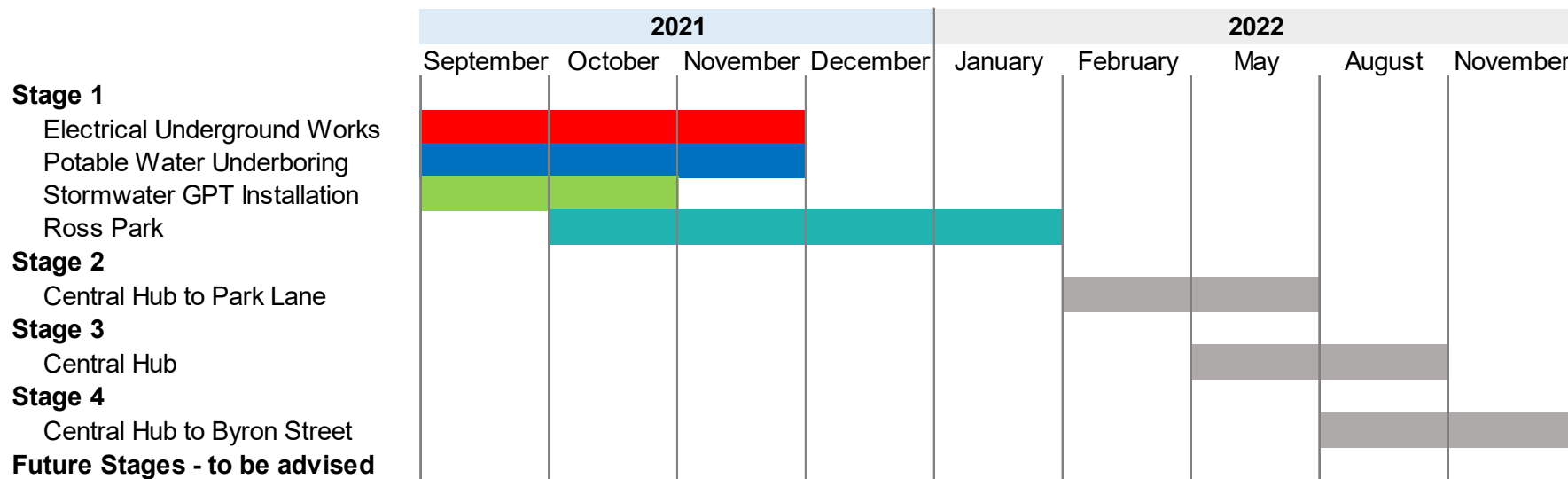
Footpaths

- New paving, driveways, and footpaths

Landscaping

- Installation of street furniture and planting

Program – indicative phases and duration



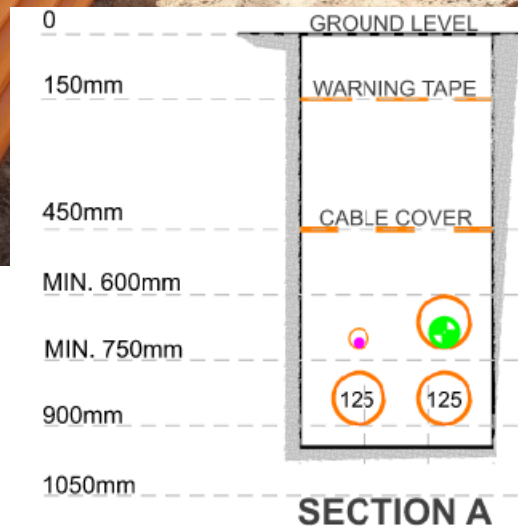
Notes

1. Subject to approvals, weather and site conditions
2. Future stages to be carried out when funding becomes available

Phases are based on:

- Logical order of works to suit layout of services
- Maintain basic infrastructure services; electrical, potable water, sewer and stormwater
- Maintain reasonable access to properties
- Requirements of Grant funding – Ross Park and Ballina St (Central Hub to Park Ln)

Typical Electrical Construction Layout



Typical Construction Images



Gross pollutant trap installation – Ross Park and Lennox Park

Typical Construction Images



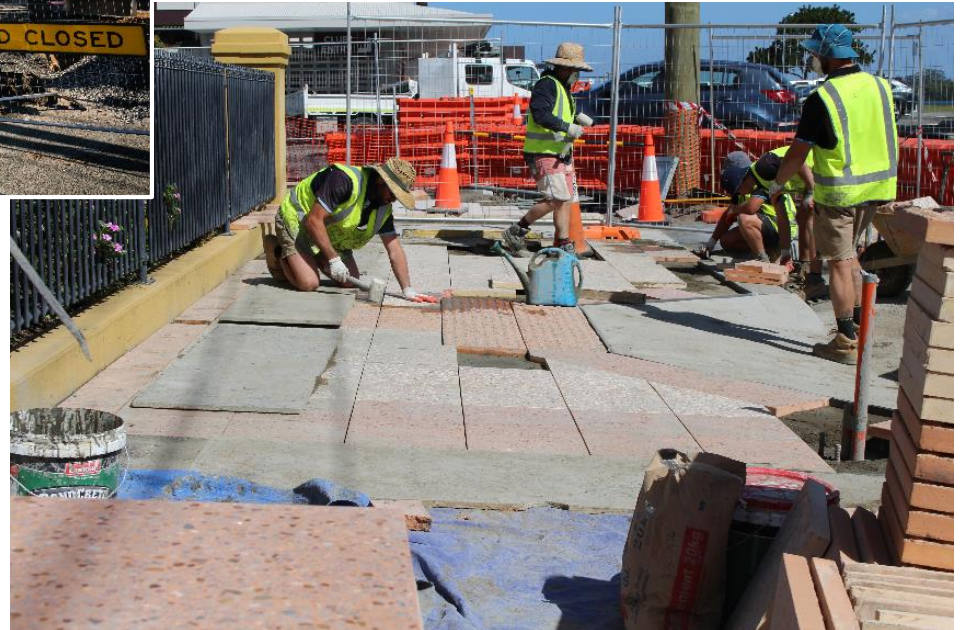
Typical Construction Images



Typical Construction Images



Typical Construction Images



Potential impacts during construction

Ross Park

- will be closed for the duration of Stage 1

Dust

- water spraying to help minimise dust

Noise

- Day works to limit disruption to business/residents/visitors
- Concrete saw cutting of existing surfaces where required
- Construction days/times Mon-Fri 7am-6pm, and at times Sat 8am-1pm
- Works may be required out of hours

Access to business and residents

- Onsite staff will liaise with business/residents to maintain customer and delivery access where possible or provide alternative access points
- Contact will be made prior to each phase

Car Parking

- Maintain travel lane. Parking will be reduced during the active phase of construction. Parking may be unavailable in front of businesses during particular phases.

Potential impacts during construction

Utility upgrades and outages

- any power and water outages will be notified in advance (via email updates).
- outages will be scheduled to minimise impacts where possible.

Pedestrian Access

- temporary detours around construction zones

Travel delays

- every attempt to keep traffic lane open.
- Ballina St will at times be partially closed with stop/slow traffic control
- Speed limit reductions around construction zones:
 - To maintain pedestrian traffic in the village, Council will communicate to the wider community to park and walk.
 - Through traffic will be encouraged to use Byron St and Park Lane.

Bus Shelter

- temporary relocation to Lennox Park Picnic Shelter during Ballina St works.

Potential impacts during construction

How we can assist:

- programming of works to minimise impacts
- communication updates via email prior to the commencement of each phase
- communication to broader community via Community Connect and the local media
- availability of key contacts to address issues onsite.

Key Stage 1 construction contacts:

- Kerry Condon (project and design) 0437 707104
- Quanta Lines
- Tracy Lister (communications) 1300 864 444 tracy.lister@ballina.nsw.gov.au
- Onsite contacts to be provided to businesses prior to construction commencing.

Start date: August 2021 (Stage 1) – subject to relevant permits.

Questions?

Send questions via the **chat icon**
(at the bottom of your Zoom screen)

If you prefer not to ask your question today, or think of something after today's session please email

tracy.lister@ballina.nsw.gov.au

***Thank you for attending today's
information session***

p: 1300 864 444 | e: council@ballina.nsw.gov.au

Facebook/BallinaShireCouncil

ballina.nsw.gov.au