



community connect

the newsletter of ballina shire council

BALLINA MAJOR REGIONAL CENTRE STRATEGY

We Want Your Ideas...

Ballina Shire Council wants to know what you think about the future of Ballina.

Ballina has been identified as an emerging regional centre in the New South Wales Government's Far North Coast Regional Strategy.

Council is preparing the *Ballina Major Regional Centre Strategy* to guide growth in a way that maximises opportunities, while at the same time preserving the things about Ballina that are important to our community.

Getting Involved

To assist in the development of the strategy, Council wants to know what you think we should gain, what we should sustain and what we should change, as Ballina becomes a major regional centre over the next twenty years. We want you to tell us:

1. What's important to you about living/working/playing in Ballina?
2. What does Ballina need as it becomes a major regional centre?
3. What would need to change for Ballina to become an even better place to live/work/play?
4. What concerns or excites you about change?



You can get involved in the following ways:

- **PHONE** the project team on 6686 1284
- **EMAIL** BMRCs@ballina.nsw.gov.au,
- Make a **WRITTEN SUBMISSION** to:
The General Manager
Ballina Shire Council
PO Box 450, BALLINA NSW 2478
-  Share **PHOTOS** that show things about Ballina that you like, would like to see, or would like to change, using the Instagram hashtag [#ballinafuture](https://www.instagram.com/ballinafuture).
- You can also **MAP** your vision of Ballina's future, using an interactive mapping platform called sMap. Follow the link on the project website ballina.nsw.gov.au/BMRCs
- **VISIT THE WEBSITE** for further details, reference documents and regular updates at ballina.nsw.gov.au/BMRCs



Banner image: HMAS Labuan docked at Fawcett Park Wharf. Photo courtesy Teegan Bruncke.
See page 16 for the HMAS Labuan's visit to Ballina.

pools
proposal



wet
weather
info



wigmore
arcade still
open



community
events



rising star
scholarship





contents



Ballina Major Regional Centre Strategy	1
From the Mayor's Desk	2
Possible Ballina and Alstonville Pool Upgrades	3
Future Forum Helpdesk Responses	4
Learn more about your Community	4
Rural Settlement Character Statements now on Exhibition	4
Mythbusters	5
Where to get info...extreme weather conditions	5
Ballina Lennox Coastal Connection – update	6
Road Projects	7
Wigmore Arcade still open for business	7
Dial before you dig	7

Latest News from Ballina Byron Gateway Airport	8
Regional Works Crew supports National Tree Day	8
Register your pet: it's cheaper than a fine	8
People Poll	9
Object of the Story – Highly Commended	10
Need Building Surveyor Advice?	10
Shaws Bay Management Plan on Exhibition	10
Sign up for the Blackwall Bugle	10
Bikes, coffee & community	11
Swimming Pool Registration Reminder	11
Asbestos Household Disposal Scheme (HADS)	11
Know the rules outside schools	12
Nominate now! 2015 Australia Day Awards	12
There's no such thing as a Dog Poo Fairy	12
Charity shops welcome donations of goods but not rubbish	13
Spring into gardening at the Ballina Community Garden	13
Protecting vegetation on public land	13
Community Events	14
Event Wrap Up	16
Rising Stars Scholarship	16
Scooter Workshop	16
Community Focus on...Tintenbar Up Front	17
Swim into Summer at the Ballina and Alstonville Pools	17
Staff Profile – Sandra Jackson	17
Arts Connect	18
Water Talk – Issue 26	20
Waste Watch – Issue 6	23
What to do during the School Holidays	24
What's on at your local community centre	26
Swim Safely this Summer	28



Cr David Wright

FROM THE MAYOR'S DESK

Welcome to Spring...

Firstly, I wish to thank all the SES crews for their tireless work in the recent deluge. To have this magnificent group willing to put their lives on hold while dealing with other people's troubles is something that takes immense commitment. Our community is so lucky to have such a resource.

I also wish to thank the whole team of Council employees who spent the night in terrible conditions, checking sewer pump stations, putting

up the 'Water over the Road' signs, tending to phone and social media comments to ensure the health and safety of residents and those driving on the roads. The Council website was up to date with the latest data on roads and other valuable information.

It was amazing that the equivalent of the last three months of rainfall fell in a 24 hour period. No wonder there was so much water across the flood plain.

As Mayor, I have the opportunity to attend numerous functions that showcase the diversity of people and events in the Shire. In the coming months I will be attending community functions such as the Coastal Country Music Festival, the Ballina Prawn Festival and the Summerland House Country Fair. Our community owes a lot to the dedicated bands of people who present these marvellous events.

I am writing this article after a busy day on Sunday. The range of activities in one day in our Shire was amazing. I attended the Lennox Head Markets and many people were enjoying the wide range of offerings, then I was off to the Quota Arts and Crafts Fair in Alstonville.



POSSIBLE BALLINA AND ALSTONVILLE POOL UPGRADES – HAVE YOUR SAY

The Ballina and Alstonville swimming pools are two of our most popular community assets, attracting more than 155,000 visits last season. The pools, which were built in the early 1970s, are showing their age and Council is now looking at refurbishing the existing facilities. In undertaking this refurbishment there is an opportunity to upgrade both pool complexes and provide an expanded range of services.

Improvements that have been identified by users of the facilities include:

- Heating of the Ballina pool and improved heating of the Alstonville pool
- Contemporary children's wet play areas
- Dedicated training or lap pools
- Improve picnic and BBQ facilities
- Covered spectator seating and increased shade structures
- Improve disabled access and amenities
- Additional lanes to ensure the 50m pools meet competitive swimming standards

The estimated cost for this upgrade program is approximately \$8million (\$4m per pool). Based on our current revenue base we cannot fund this scope of works without reductions in other services. Therefore we are now seeking community feedback to see if there is support for Council to fund these improvements by an additional rate increase of 2.5% for two years. This, combined with the typical annual rate increase set by the NSW Government of around 3%, would see rates increase by a total of 5.5% in 2015/16 and 2016/17.

If this funding was approved, the Ballina pool upgrade would be completed in 2015/16 and Alstonville in the following year.

As part of our consultation process we will be writing to all ratepayers providing detailed information on the impact of the proposed rate increases on current property rates.

If you are interested in obtaining further information on this proposal, an overview of the swimming pool redevelopment program and the special rate variation process is available on our website ballina.nsw.gov.au/poolsproposal.

We want your feedback

This is an important consultation project and we encourage feedback from all residents and property owners.

• PUBLIC MEETINGS

Tuesday 7 October – 7 pm

Lennox Head Cultural and Community Centre
Meeting Rooms 1 and 2

Wednesday 8 October – 7 pm

Alstonville Leisure and Entertainment Centre

Thursday 9 October – 7 pm

Ballina Shire Council Chambers

• EMAIL poolsproposal@ballina.nsw.gov.au

- To complete the online **SURVEY** visit the homepage of ballina.nsw.gov.au/poolsproposal

• Make a **WRITTEN SUBMISSION** to:

The General Manager
Ballina Shire Council
PO Box 450
BALLINA NSW 2478

- **VISIT THE WEBSITE** for further details, reference documents and regular updates at ballina.nsw.gov.au/poolsproposal

- **SUBMISSIONS CLOSE** Friday 31 October 2014

The Fair had its biggest day ever on the Saturday and there were crowds streaming in on Sunday. The Quota Club uses this function as its main fundraiser for the year and distributes the proceeds to local charities and schools.

I then attended a formal wreath laying at the Ballina RSL Memorial where Legacy Week and the widows and children of ex-servicemen were honoured. This solemn ceremony reflects the caring, volunteer work performed by many to help these families who had their loved ones fight to protect all we hold dear.

Next I headed up to Victoria Park to collect 'Gas Field Free' scrolls reflecting the opinions on gas mining by residents on the southern section of the Alstonville Plateau. The average response was a 95% 'NO' to any disturbance of the plateau's farm land and aquifers. I thank all the volunteers for their survey work.

I then drove down to East Ballina. The area near the surf club was packed with many enjoying the great day. I was lucky to be asked to present the trophies to the teams competing in the Dragon Boat racing

in Shaws Bay. Teams from Queensland to Port Macquarie enjoyed great camaraderie while paddling their huge craft, raising funds and awareness for breast cancer. So many great people volunteered to ensure the event was a success.

I later attended the amphitheatre at Missingham Park to witness 'People power' in action. It was great to hear passionate people share their concerns for our planet. While I didn't participate in the political debate, it was pleasing to welcome such a diverse crowd. It is wonderful that people from our Shire and surrounding shires had the opportunity to express their feelings.

Finally, with so many people walking and cycling around the Shire, the current works along the Coast Road will add to the diversity of scenarios for route selection.

Please keep healthy and safe.



Futures Forum Helpdesk Responses

In May 2014, we ran the Ballina Futures Forum where a group of randomly selected community members got together to talk about Ballina's future. As part of this, we had a 'Helpdesk' set up for questions and comments.

Here are some of those comments, questions and our answers.

1. The traffic lights on the corner of River and Kerr Streets do not allow enough time for traffic to cross in a northerly direction.

The lights at this intersection are controlled by the Roads and Maritime Services (RMS). Our Development Engineer has referred this to the RMS traffic management staff for review.

2. A need for handrails for older people on walking paths was identified.

The needs of older people are part of the consideration of how walking paths are delivered. Whilst we do not provide handrails except in limited locations, we do provide seats at strategic distances for people to take a break. Seats are chosen to be easy to use with handles to help with sitting down and getting back up.

3. Council clean-ups were a popular request.

The option of providing a free clean-up day across the Shire has been debated by Councillors on a number of occasions. The reasons that such a service has not been supported include the significant cost of providing the service, with ultimately every person who pays a waste charge to Council then paying for the service, even though they may not use it. Also encouraging residents to just dump waste on the side of the road is inconsistent with contemporary waste strategies. People are encouraged to take responsibility for their own waste and reuse and recycle where possible. There is also potential for dangerous materials and environmental hazards to be left unattended on footpaths which presents safety issues for the wider community and collection service personnel. Many councils are deciding to stop this practice because they have found that it has led to the generation of even more waste, which has a direct negative impact on the landfill.

4. A 'bad smell' has been identified near the Kentwell Community Centre in Ballina, as well as near the bridge under construction south of Ballina.

Bad smells are always checked out by our Wastewater Section when reported, just in case there is a faulty sewer pumping station or other health hazard. However, in these cases it appears that the smells may be due to one of two other causes:-

- There is a bat colony still residing in the mangroves across the road from the Kentwell Community Centre, which may have caused the offending odour.
- It is also possible that the odours are due to the breakdown of organic matter within the soil profile of mangroves adjacent to these areas. The odours often occur seasonally, but our weather has been a little changeable in the last few years, so that the timing of odours may change with the weather conditions.

More information about mangroves and their smell can be found at ballina.nsw.gov.au under the Environment/Environmental Information tab.

LEARN MORE ABOUT YOUR COMMUNITY

Did you know that in 2011:

- More than a third of Ballina Shire's population lived at a different address than they did five years prior?
- Nearly half of the population of Ballina Island is aged over 55, whereas in Lennox Head less than a third of the population is?
- 75% of households in East Ballina have an internet connection, but only 55% of households on Ballina Island have?

Do you want to know more about the make-up of our Shire community?

Come along to an information session to see the interactive online demographics platform **profile.id** to help you access and interpret demographic information about your local community.

The web tool enables users to look at aspects such as age, family and household characteristics, cultural heritage and ancestry, employment and income information, to name just a few.

The next session will be held on **9 October 2014 at Ballina Shire Council's Customer Service Centre, 40 Cherry Street, between 2pm and 3:30pm.**

Bookings are essential. Please contact Fiona King, Strategic and Community Facilities Group, on telephone 6686 1284 or email fionak@ballina.nsw.gov.au by 1 October 2014 to book your place.



RURAL SETTLEMENT CHARACTER STATEMENTS now on exhibition!

Recently, Council asked residents living in our rural localities about what was special about 'their place'. Many people came along to the meetings to talk about what they loved about their local area, how they used the land and what activities communities are involved in.

These discussions resulted in Rural Settlement Character Statements for the rural localities of Newrybar, Tintenbar, Fernleigh, Meerschaum Vale, Rous, Rous Mill, Patches Beach, Empire Vale/Keith Hall and South Ballina. These statements are on exhibition for comment until 6 October 2014, and can be viewed at ballina.nsw.gov.au. Thank you to all those who attended to share their thoughts about their local area.

In the December edition of Community Connect, we will also be providing feedback on issues raised at the meetings that were outside the scope of the statements.



MYTH BUSTERS

This issue of mythbusters is dedicated to addressing some of the most common misconceptions that were circulating in the community during the rain event in late August.

DRINKING WATER NEEDED TO BE BOILED BECAUSE IT WAS CONTAMINATED WITH SEWAGE

There was no contamination or risk to the drinking water supply. If water did need to be boiled, Council and NSW Health would issue a boiled water alert to residents. Council did encourage residents to reduce their water consumption to reduce the risks of damage to low lying private property damage. This was in response to the amount of rain water entering the wastewater system causing some back up in the system. This is not unusual for a rainfall event of this size as rain water enters the wastewater system as it cannot be fully sealed. Over the past ten years Council has made a significant annual investment in a program to reduce the impacts of this effect. This continuing program involves relining of old pipes, raising manholes, identifying illegal drainage connections and pump upgrades.

THERE IS A MAJOR PROBLEM WITH THE STORMWATER INFRASTRUCTURE, THERE'S NOT ENOUGH DRAINS.

Ballina's drainage infrastructure is designed according to Australian design standards. The recent rainfall event produced a large volume of rain in a short time which coincided with an incoming tide causing localised flooding. The aim of the drainage system is to provide underground passage for the water from smaller rainfall events and a safe overland path for the water from major events. Overall, considering the conditions, we were pleased with the performance of the system, as reports of property damage or fully flooded roads in the urban area were very limited. In particular we noticed improvements in areas where we have completed works over the last few years to repair collapses in old drains. Council is mindful that as our infrastructure ages renewal and repair of this infrastructure is essential to maintain and improve our service levels.

THE URBAN ROAD I TRAVEL ON HAD WATER OVER IT, IT WAS DANGEROUS, BUT IT WASN'T LISTED ON MYROADINFO.COM.AU AS BEING CLOSED

The rural road network is inspected as quickly as possible, however the changing conditions mean it is difficult for our reporting to be fully accurate. In wet weather, motorists must exercise extreme caution at all times.

COUNCIL HAS CHOSEN TO NOT MAINTAIN STORMWATER DRAINS, WHICH IS WHY THEY BLOCKED UP AND CAUSED FLOODING.

Council conducts regular inspections and maintenance of all stormwater infrastructure. Despite this, some blockages from leaves, tree roots and other sources can occur between inspections. During the storm event our crews were working to remove blockages that were found to be causing drainage problems. Council staff have also collected survey and other data in response to the storm to assist in our maintenance planning for the future.

If you have any other stories you would like clarified please email Council at mythbusters@ballina.nsw.gov.au

Where to
get info...

EXTREME WEATHER CONDITIONS



ROAD CLOSURES

myroadinfo.com.au for Ballina Shire rural road info

livetraffic.com for highway and major arterial road info

RADIO STATIONS

- Paradise FM 101.9
- ABC North Coast 94.5
- 2LM 104.3
- ZZZ FM 100.9

FIELD CLOSURES

24-hour hotline 02 6686 1499

(recorded messages from individual sporting clubs).

WEATHER CONDITIONS

bom.gov.au Bureau of Meteorology

BALLINA BYRON GATEWAY AIRPORT

Your local airline for flights to and from Ballina:

Rex 131713 or 6686 8140

www.rex.com.au

Jet Star 131538 or 6686 8385

www.jetstar.com.au

Virgin Australia 136789 or 6686 7664

www.virginaustralia.com.au

ACTIONS TO TAKE

- Alerts are issued via Council's website ballina.nsw.gov.au or emergency updates via your local radio station.
- Delay any unnecessary travel until conditions have cleared.
- Look out for your neighbours
- If water is overflowing street stormwater drains, refrain from using internal water eg: washing machines, dishwashers, baths, showers and flushing of toilets until the water has cleared.
- Watch for Council, SES and other State Government agency updates.

KEY CONTACT NUMBERS;

- **SES** 13 1500
- **Ballina Shire Council** 6686 4444
or **emergency after hours** 6626 6954
- **Emergency Services**
Police, Ambulance, Fire Brigade 000



BALLINA LENNOX COASTAL CONNECTION - UPDATE

Since the last edition of **Community Connect** there has been substantial progress on the Ballina to Lennox Head shared path for pedestrians and cyclists and it won't be long before people can walk and ride safely from Skennars Head to Ballina.



The section of the path from North Angels Beach to Skennars Head is almost finished. (See the green coloured line on the map.) The estimated cost for this stage of the project is \$600,000.



A lot of work has also been done on the path linking Skennars Head to Tara Downs via North Creek Road. This work also involves building a retaining wall to support the path. The estimated cost for this section is \$840,000.

The next stage to be built will link Tara Downs to Amber Drive and will cost \$790,000. Council has applied to the NSW Government for 50% grant funding for this section of the path. If we receive a grant we aim to finish the work this financial year.



Another shared path will be built on the eastern side of The Coast Road to link Angels Beach, Flat Rock and Sharpes Beach. This is a complex project involving Crown land and cultural heritage issues. The pre-construction planning conditions associated with this \$1.4 million path are extremely comprehensive and we are hoping these pre-construction conditions will be resolved by November/December this year. Council has \$1.4 million of its own funds set aside to complete the work this financial year.

Frequently Asked Questions

What is a shared path? The term shared path is used to describe a path designed for many different people including cyclists, pedestrians, people with prams and people in wheelchairs. This term is somewhat different to a cycleway, which is normally a lane to the side of a road where cyclists are able to safely ride beside traffic.

Is the shared path between Ballina and Lennox Head going to be a direct route following the current Coast Road? Council is building a series of shared paths that interconnect. A description and map of the planned stages can be downloaded at ballina.nsw.gov.au/ballinalennoxcoastalconnection.





ROAD PROJECTS

Kerr Street/Bangalow Road

Asphalt resurfacing works were completed on Kerr Street between Fox Street and Bangalow Road in June. This project was funded by Roads & Maritime Services as part of the handover of the old Pacific Highway on completion of the Ballina Bypass.

Tamarind Drive

Asphalt overlay works on Tamarind Drive between North Creek Road and Deadmans Creek Road were finished in July. This work was also funded by Roads & Maritime Services as part of the handover of the old Pacific Highway.

Angels Beach Drive

Asphalt overlay works on Angels Beach Drive between Bangalow Road and Prospect Bridge were completed in early September. We thank motorists for their patience during these works. The entire section of the road was closed with traffic being diverted via Bentinck Street and Links Avenue for the five days while the resurfacing works were being undertaken.

The approach, of completely closing the road, is preferred as it minimises the time needed to complete the works and reduces the length of time that traffic is disrupted and reduces costs. It also means savings for the community that can be used on other projects.

Rifle Range Road

Pavement reconstruction on Rifle Range Road is due to commence in September.

Tamar Street

Council staff have been resurfacing the road and landscaping along Tamar Street between Grant and Kerr Streets. This work has been undertaken on weekends to limit inconvenience to businesses and the public.



The Essential First Step.

DIAL BEFORE YOU DIG

Dial Before You Dig is a free service designed to prevent damage to underground pipe and cable networks. Ballina Shire Council is now on board and you can locate water, sewerage and storm water networks as part of the DBYD service.

Download the app at www.1100.com.au or contact the national call centre on 1100.



Council's refurbishment of the Wigmore Arcade in Ballina has started.

Daley's Gourmet Meats and the **Tobacco Station** will continue to trade in Wigmore Arcade whilst the upgrade is being done so there will be no inconvenience to customers.

Cathy Walshe Mens' Haircutter is also remaining open although the business has moved from shop 2 to shop 12 for a few months.

The project is expected to be finished in mid November and will cost \$1.79million.



Latest News from Ballina Byron Gateway Airport



DAILY MELBOURNE FLIGHTS

Daily jet services between Ballina and Melbourne started on 1 September, with Jetstar increasing its number of flights per week from three to seven.

This means an extra 74,880 seats per year in and out of Ballina which is great news for our local economy.

AVIATION FIRE STATION FOR AIRPORT



Work has started on the construction of an Aviation Rescue Fire Fighting (ARFF) Fire Station at Ballina Byron Gateway Airport. The \$12.5 million fire station, which will provide aviation rescue fire services, is being funded by Airservices Australia.

The fire station should be operational early next year and will employ 16 staff.

400,000 PASSENGERS

Close to 400,000 people passed through the terminal building last year, an increase of 11%. This is expected to rise to 440,000 by July 2015.

CAR PARK CONSTRUCTION TENDER



Council is currently advertising a tender for the construction of a new car park at the Ballina Byron Gateway Airport. The project involves the creation of an additional 143 car parking spaces including 68 undercover parks, as well as security fencing, paving and landscaping.

The work should be finished by Christmas.



REGIONAL WORKS CREW SUPPORTS NATIONAL TREE DAY

The Ballina Shire Council's Regional Works Crew has made an enormous contribution to National Tree Day, coordinating the donation of 1,900 plants and 75 cubic metres of mulch to local schools and Landcare groups.

The Regional Works Crew provides employment opportunities for 13 people with disabilities who work in Council controlled parks and gardens, and at its nursery at Alstonville.

National Tree Day was celebrated in June.

Pictured above are Keven Gooding, Angela Green and Chris Hendry from the Regional Works Crew.



Register your pet:
it's cheaper than a fine

All cats and dogs in NSW must be microchipped by the time they are 12 weeks old or before being sold or given away. They must also be registered with Council when they are six months old.

Council is currently conducting an audit of the NSW Companion Animal Register of all cats and dogs in the Shire and following up on those not registered.

Failure to microchip and register your pet may result in a penalty infringement notice of \$275. It is far cheaper to register your pet than cop a fine.

If you are unsure how to microchip and register your pet please phone our Rangers on 6686 1210 or visit our website ballina.nsw.gov.au



Narelle Dewhurst

What do you like about living in Ballina Shire?

The fresh air; the open spaces; the beautiful waterways; the amazing landscapes and environments that change within a 20 minute drive; the relaxed lifestyle opportunities; the breathtaking moments that this area offers (the drive along the Coast Road, the headland areas, the north and south wall, the cycleways); the familiarity of living in a not-too-small not-too-big community.

What can Council do to improve the lifestyle you have in Ballina Shire?

Review street lighting - particularly in the Headlands area where I work. There seems to be minimal lighting, particularly on Isabella Drive, College Avenue, and Carroll Avenue. Many families with young children reside here and attend school functions in the evening. Extra lighting would make it easier to see the road, paths and guttering, particularly during winter months when it is dark by 5.30pm.

Council's Response

Council allocates approximately \$46,000 annually for additional street lighting with the program for the next two years, which includes some of the works you identified as follows:

2014/15

- Isabella Dr, Skennars Head \$42,000
- Kays Lane, Alstonville \$3,000

2015/16

- College Ave, Skennars Head \$20,000
- Grant St, Ballina \$15,000
- Moon and Martin Sts, Ballina \$12,000

For a full copy of the four year program refer to the capital works section of our Delivery Program and Operational Plan located on our website ballina.nsw.gov.au/ourcommunityourfuture



John and Beverley Grant

What do you like about living in Ballina Shire?

After just returning from overseas visiting 18 different countries we know that Ballina is the best place on earth. It's safe, the weather is ideal and the people are wonderful. We are very fortunate to have such things as a thriving industrial estate, a well serviced airport and a diverse range of activities to do such as great local theatre at the Ballina Players. We love being involved in the community through the Lions Club.

What can Council do to improve the lifestyle you have in Ballina Shire?

We're quite happy really and know that it is not easy to satisfy everyone with a limited budget, but would like to see access to our waterfronts improved. One thing that our recent trip has shown us is the ease of accessing rivers and oceans in different places around the world. We have such wonderful assets and we should improve access for everyone.

Council's Response

Council has two plans that guide our foreshore infrastructure development, being the Richmond River Recreational Boating Study and the Ballina Foreshore Master Plan, both of which are available on our website ballina.nsw.gov.au/councildocs

Recent projects that we have completed in these plans, with 50% funding provided by the State Government, include improvements to the Emigrant Creek and Fishery Creek boat ramps and the new Wardell wharf.

For the 2014/15 financial year the works planned are:

- Further improvements to the car park at the Fishery Creek Boat Ramp.

- Preparation of a master plan for the marina precinct at Regatta Avenue, Ballina to identify potential upgrades for the next few years.
- Design and approval for a new boat ramp at Keith Hall Lane, South Ballina.

Improved foreshore infrastructure remains a high priority and we will continue to pursue grant funds for these works.



David Phyland

What do you like about living in Ballina Shire?

The weather is pretty good and I also like the quiet and peaceful lifestyle.

What can Council do to improve the lifestyle you have in Ballina Shire?

I live on a rural property and I don't enjoy getting my rates notice. We pay nearly \$2,000 a year for services we don't use; we have our own tank water, septic system and my rates keep going up. So really all I'm paying for is to have my rubbish collected.

Council's Response

Councils provide a wide range of services and ultimately the benefit anyone receives depends on their own situation.

For example, it is difficult to measure how much a person uses the Council roads, with your property rates funding road maintenance and construction works, along with the footpaths, street lighting, signage and stormwater drainage.

Similarly other council services such as parks and reserves, sporting fields, surf lifesaving, swimming pools, libraries, town planning, rural fire service, public health programs, environmental programs, the community gallery and community centres are all funded by rate income and used to differing degrees by our residents.

Every day we are all accessing Council services; so even though property rates, which are based on the land value of the property, may have no direct link to the services used on a property, the overall benefit will depend on your own lifestyle, along with that of your family. Also the services provided by a council help to define the type of community we live in.

Finally our rating structure recognises that farms are often larger and have higher land values than residential properties. Therefore all properties, which have a dominant use as farmland, receive approximately a 20% discount as compared to residential properties.



Lucy Hord

What do you like about living in Ballina Shire?

The relaxed coastal lifestyle, sense of community and a great café culture.

What can Council do to improve the lifestyle you have in Ballina Shire?

Install stationary public fitness equipment to complement Ballina's outdoor lifestyle.

Council's Response

Many councils have or are seeking to have fitness equipment in their parks and this is something we would like to do too. Council allocates between \$150,000 and \$200,000 annually for the replacement or renewal of playground equipment and we are currently reviewing that program to determine the best facilities for our community.

Object of the Story Highly Commended at RH Dougherty Awards



Ballina Shire Council was thrilled to be recognised at the prestigious Local Government NSW RH Dougherty Awards which were held at Parliament House in Sydney on the 8 August 2014.

Our project, *Object of the Story: Reflections on Place*, received a Highly Commended in the Excellence in Communication Category.

The Judges commented that the project demonstrated strong collaboration with the Jali Local Aboriginal Land Council and saw the collation of stories of our local people. The project provided the community with a historical document unique to their local community. It also enabled stronger ties between the broader community and Aboriginal community to develop.

54 communication initiatives were nominated by councils across NSW.

More information on the *Object of the Story* project can be downloaded from Council's website ballina.nsw.gov.au/objectofthestory

NEED BUILDING SURVEYOR ADVICE?

Council has building surveyors who can help with building and development enquiries.

They are available between 8.30am and 11.30am weekdays. Alternatively, leave your contact details at our Building Services administration

area and our officers will endeavour to call you back as soon as possible, normally within 24 hours.

If you require a specific appointment with a building surveyor phone 6686 1415.



SHAWS BAY MANAGEMENT PLAN ON EXHIBITION

Local firm Hydrosphere Consulting has been developing a new management plan for Shaws Bay on behalf of Ballina Shire Council. The draft plan, which is referred to as the Coastal Zone Management Plan (CZMP) for Shaws Bay, is now on display and available for public comment. The Plan reflects community aspirations for this iconic waterway and aims to optimise recreational opportunities whilst protecting the ecological values of the Bay.

As part of the consultation process, a public drop-in information session will be held at the **Ballina Surf Club (Function Room 1)** on **Thursday 18 September 2014 between 4pm and 6pm (presentation at 5pm)**. Council staff and members of the project team will be available at this session to discuss the draft Plan and answer questions.

The Plan and its supporting documents are available from Council's Customer Service Centre in Ballina or by visiting hydrosphere.com.au/shawsbay

Feedback can be provided until Friday 26 September 2014.

Sign Up for the Blackwall Bugle

To keep abreast of all that is happening in Wardell, sign up for The Blackwall Bugle.

You can view the Bugle from your smartphone, tablet or personal computer by downloading from Council's website.

To make sure that you never miss an edition, visit the Blackwall Bugle webpage and subscribe to the email notification service.

To subscribe visit ballina.nsw.gov.au/blackwallbugle





BIKES, COFFEE & COMMUNITY

Pop Up Coffee Shop

**Sunday 21 September
9am to 11am**

Southern entrance to the North Wall, East Ballina.

Council is developing a new Bike Plan. This is one opportunity to have your say on cycling infrastructure and facilities in the Ballina Shire. Your input is sought to identify the priorities for the plan. Complete an online survey at ballina.nsw.gov.au

Social Ride

Sunday 21 September, commencing 9am (11kms)

Register at the Pop Up Coffee Shop at 9am sharp.

To celebrate NSW Bike Week a Pop Up Coffee Shop just for cyclists will give our cycling community a place to meet, go for a ride, share ideas and drink coffee.

All riders are welcome, and anyone with ideas on how to make cycling safer and more enjoyable in the Ballina Shire.

Barefoot Roasters will provide one **FREE COFFEE** to each participating cyclist.



SWIMMING POOL REGISTRATION REMINDER

A reminder to all pool owners that under the NSW Government's Swimming Pools Amendment Act 2012, all pool owners were required to register their pool on the State-wide, on-line Swimming Pool Register. It is an offence to not have your pool registered and penalties apply. Council is currently identifying pools within

the Shire that are not registered and will be following up with property owners.

To access the on-line register visit swimmingpoolregister.nsw.gov.au

For further information contact Council's Building Services Section on 02 6686 1415.



Asbestos Household Disposal Scheme (HADS)

If you have asbestos around the house that you want to get rid of you will be pleased to know that Ballina Shire Council is taking part in a 12 month trial of the State Government's Householders' Asbestos Disposal Scheme (HADS).

For Ballina Shire residents disposing less than 10m² of asbestos

You can buy a \$120 Householder Asbestos Kit from the Ballina Waste Management Facility that includes all the necessary equipment to safely remove asbestos. This also allows you to dispose asbestos at the Lismore Waste Facility for free.

For Ballina Shire residents disposing more than 10m² of asbestos

If you have more than 10m² of asbestos you must use a professional asbestos removalist. Waste Management fees have been reduced by \$50 per tonne (up to five tonnes) and asbestos can be taken to Grafton, Lismore, Kyogle or Casino Waste Management Facilities.

Asbestos removalists will need to provide your proof of residency in order to receive the cost reduction.

50% OFF Disposal Fees

ASBESTOS

Householder Disposal Scheme

Starts 1 July. Conditions apply

Householder Kits available from Council

**For more information visit www.newwaste.org.au
or contact Ballina Shire Council 02 6686 4444**

This project is a NSW EPA Waste Less, Recycle More initiative funded from the waste levy.



KNOW THE RULES OUTSIDE SCHOOLS

The safety of our children is a priority for the entire community and this is why Council Rangers regularly patrol school zones. Children are extremely vulnerable because of their unpredictability, their size and inability to judge speed and distance. In fact, it's recommended that a parent or adult hold the hand of children under the age of eight when crossing the road, in the carpark, or when walking on a footpath.

Parking offences in school zones carry heavy fines and the loss of demerit points.

Remember...
it is against the law to:

- stop and park in bus zones and 'No Stopping' zones
- double park
- stop longer than two minutes in a 'No Parking' zone
- stop on or within 20m of a pedestrian crossing or children's crossing



Our Rangers do a great job trying to keep school zones safe but unfortunately people can be very unkind when they realise they have been caught doing the wrong thing.

If you are caught parking in a school bus zone, over-staying the parking limit or having your dog in the wrong place – spare a thought for the Rangers. They are just doing their job. There is an expectation within the community that there needs to be laws regarding safety for children, parking and dogs etc. If you don't want to be fined – do the right thing.



Nominate Now! 2015 Australia Day Awards



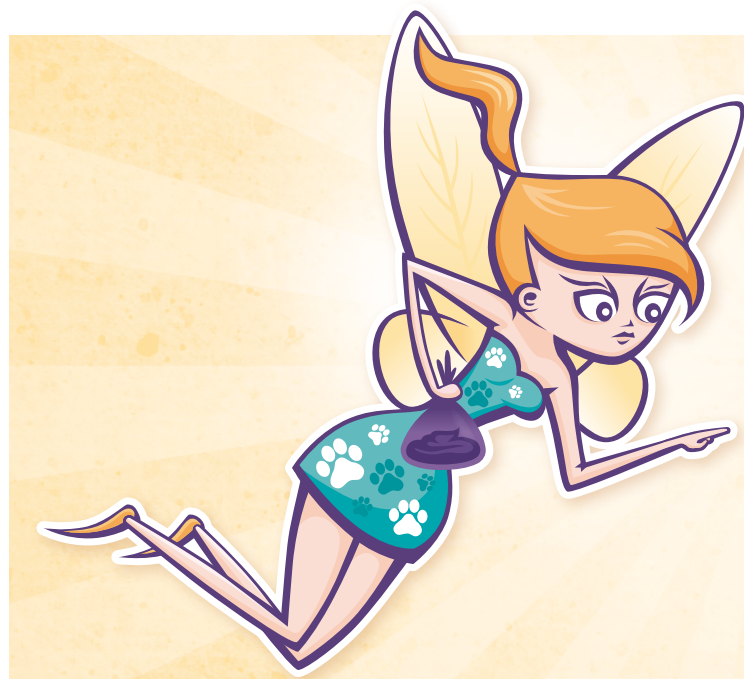
Tracey Everingham, 2014 Citizen of the Year (Photo: Ballina Shire Advocate)

Nominations are open for the annual Australia Day Awards program. If you know a "local hero", how about nominating them for a Ballina Shire Australia Day Award.

There are seven categories for nomination:

- Young Citizen of the Year (30 years of age or under)
- Citizen of the Year
- Senior Citizen of the Year (60 years of age or over)
- Volunteer of the Year
- Sports Award (individual or team)
- Arts/Cultural Award
- Community Event of the Year.

It's easy to nominate. Go to ballina.nsw.gov.au to download a nomination form or collect one from Council's Customer Service Centre, 40 Cherry Street Ballina. Nominations close Sunday 7 December 2014.



THERE'S NO SUCH THING AS A DOG POO FAIRY

In an effort to keep our beaches, waterways, parks and foreshore areas clean and tidy Council encourages residents and visitors to pick up after their dog. It is the responsible thing to do and it is also a requirement under the NSW Government's Companion Animals Act 1998.

If you leave the dog poo on the ground, the Dog Poo Fairy isn't going to come and pick it up! In fact you can actually be fined by a Ranger, and the fines exceed \$275.

Think about your actions, think about your community and do the right thing. Picking up after your dog will help to keep our streets, parks and beaches clean.

There's no such thing as the Dog Poo Fairy! Bag it and bin it for a cleaner, healthier Ballina Shire.



Charity Shops Welcome Donations of Goods but not Rubbish

Charity shops in the Ballina Shire provide an amazing service for our community by providing second hand goods at very reasonable prices. Not only are these items priced to help people who may not have a lot of money, but the proceeds from shops help disadvantaged people, families and charities.

Unfortunately some people are using the charity bins to dump their rubbish rather than take it to a waste facility. This means charity shop volunteers must employ a contractor to take the rubbish to the tip and they have to pay a fee for the service.

If you wouldn't wear it or use it, or it's broken – don't give it to a charity shop. And please don't leave your mattresses, broken furniture and rubbish next to the bins.



Spring into gardening at the Ballina Community Garden

The Ballina Community Garden is a welcoming and inclusive space where members of the community can grow fruit, vegetables and flowers, and share their produce and understanding about gardening and local food sustainability.

The garden, established in 2011 adjacent to Saunders Oval on the corner of Swift and Clarence Streets, includes communal garden plots, rental garden plots, raised garden beds, clubhouse, tool shed, shade house, chickens, worm farm, fruit and a nut orchard.

The garden is open to members of the public on **Tuesday and Sunday mornings 9am-12pm.**

New members and visitors are always welcome.

To join, visit the garden website ballinacommunitygardens.com.au or telephone 0400 148 692.

PROTECTING VEGETATION ON PUBLIC LAND

When residents and visitors are asked what they value about the Ballina Shire one of their top answers is the natural bush environments - from the littoral rainforest near the beaches to the rainforest remnants on the Alstonville Plateau.

The different types of bush not only provide habitat for birds and animals, the vegetation also helps to define the boundaries of public land and enhances the beauty of our area.

Unfortunately some people regularly damage vegetation on public land to improve their view or dump rubbish in these areas.

If you see someone doing the wrong thing please let Council know. There may be instances where you could be asked to give evidence if the case proceeds to prosecution.

By providing this type of support we can ensure the special environmental and cultural features of the Ballina Shire are protected.

Contact Civil Services on telephone 6686 4444.

I'm counting on you every trip

- 1** Are all the seatbelts buckled?
- 2** Are all the straps tight and straight?
- 3** Are all the clips fastened?

Make sure your child is safe
Find out at childcarseats.com.au

NSW GOVERNMENT | Transport for NSW

Entries are Now Open! Ballina Coast & Hinterland Northern Star Business Awards

27 September

Ballina RSL Club

ballinabusinessawards.com.au



The Ballina Coast and Hinterland Northern Star Business Awards are designed to recognise and reward excellence in business, foster innovation, and encourage a focus on sustainability, corporate citizenship and safe work practices. The awards also provide an annual opportunity for traders to review systems and undertake operational improvements.

Award categories for 2014 represent the diversity of business throughout the Ballina Shire, including Lennox Head, Newrybar, Tintenbar, Alstonville, Wollongbar and Wardell. Any business within the Ballina Shire boundaries is eligible to enter.

If you operate a business in the Shire this is your opportunity to participate in the region's premier business awards program. Members of the public are also encouraged to vote for their favourite business in the People's Choice categories. Visit the business awards website or Chamber Facebook page to vote online or watch out for a voting form in the Northern Star and Ballina Shire Advocate over the coming weeks.

Ballina Coastal Country Music Festival

3 -5 October

Various locations throughout Ballina

ballinacountrymusic.com



Get your dancing shoes ready and these festival dates in your diary because this is one weekend of country music you will not want to miss!

With an expected attendance of up to 10,000 people over the three day event, the 2014 Ballina Coastal Country Music Festival is anticipated to be bigger and better than ever before. Come and join the fun with the festival boasting a stellar line-up of artists including Felicity Urquhart, Luke Austin Band, Pete Denahy, The 4 Highway Men, and The Button Collective Show.

A spectacular weekend is guaranteed with all members of the community encouraged to get involved and enjoy the entertainment. With more than 30 acts in nine venues across Ballina, a free open air concert at the Ballina Amphitheatre, plus a range of musicians, buskers, markets, food stalls, carnival rides and children's activities, there is going to be something for everyone!

Second Hand Saturday

25 October

Various locations throughout Ballina Shire

secondhandsaturday.com.au



Get a free listing of your garage sale in your local paper and online. To register, and to find out where the garage sales are happening, visit secondhandsaturday.com.au.

Ballina Shire Relay For Life

1 - 2 November

Kingsford Smith Park, Ballina

fundraising.cancer.org.au/ballinashire2014



The 2014 Ballina Shire Relay for Life is fast approaching and it is shaping up to be the biggest year yet, with 18 teams registered so far. This year the organising committee is aiming to hit the \$100 000 mark towards raising funds for Cancer Council NSW.

The Cancer Council is the only organisation that works across every area of every cancer: research, prevention, support and advocacy. Cancer Council NSW is there not only for those touched by cancer today, but to prevent and manage cancer in the future.

Cinema Under The Stars

7 November, 5.30 - 9.30pm

Missingham Park, Ballina

newcastlepermanent.com.au/Community/CinemaUnderTheStars



Entry is FREE so gather your friends and family and relax with a picnic as the sun sets and the screen lights up to the kids' movie favourite, Frozen. Sponsored by Newcastle Permanent Building Society, gates open at



5.30pm with food vendors on site and a fantastic line-up of local entertainment before the movie screening at sundown.

Ballina Prawn Festival

15 November, 9am – 9pm

Missingham Park, Ballina

ballinaprawnfestival.com.au



Set on the banks of the glorious Richmond River, the Ballina Prawn Festival is one whole day and night of fun, laughter and community. This quintessential Aussie event is a wonderful celebration of the laid back Ballina lifestyle and brings together thousands of local residents and visitors from throughout the Northern Rivers and beyond.

Activities for the day include:

- A grand opening parade
- DIY raft building & river races
- The iconic trawler & boat parade
- Prawn shelling & eating competitions
- Macadamia Castle train rides & animal shows
- Amusement rides including Australia's largest travelling ferris wheel
- Sideshow alley with plenty of fun for the kids
- Tafe event games like throw a prawn on the barbie
- Artisan markets with over 60 vendors
- Chef & apprentice crustacean creation cook offs
- A signature prawn dish people's choice competition
- Eat & Sweet Street featuring local food vendors
- Live music including major headline act, The Pigs
- The annual Missingham Bridge fireworks spectacular

Gold coin entry fee & parking.

Lennox Head Carols in the Park

7 December, 5.30pm – 9pm

Williams Reserve, Park Lane, Lennox Head



The Lennox Head Carols in the Park is a community event to celebrate Christmas and the summer holidays and everyone is welcome. Our schools and community groups are involved in wonderful performances, a visit from Santa and of course the fabulous fireworks. We provide a BBQ, drinks, chips, candles, chocolate slice, cupcakes, coffee, snow cones, face painting and the Macadamia Castle animal farm; all under \$5. The event is strictly no glass and is alcohol free. Bring your family, blankets and small change for a great evening and support our local community.

Riverside Carols

14 December, 6.30pm – 9pm

Seagulls Football Oval, Ballina

riversidecarols.org.au



Riverside Carols is an alcohol free community event for all the family hosted by the combined churches of Ballina and Lennox Head. Starting at 6.30pm, we have community participation on stage with children from various schools singing. There will be coffee and donuts for sale and free face painting for all children until 7.30pm when the Carols begin. Bring your blanket, find a spot on the oval and get ready to find your voice and enjoy a night of traditional carol singing. The fun isn't over until the sky lights up with a fantastic fireworks display. Gold coin donation on entry, all funds raised go to Ballina Special Religious Education Association (BSREA).

Image: courtesy Riverside Carols

AUSTRALIAN FREERIDE NATIONALS

26 – 27 September

Lighthouse Beach, Ballina

ajsba.org.au

BALLINA COAST & HINTERLAND NORTHERN STAR BUSINESS AWARDS

27 September

Ballina RSL Club

ballinabusinessawards.com.au

NSW WAVESAILING STATE OF ORIGIN

27 – 29 September

Flat Rock Beach, East Ballina

nswwavesailing.org

BALLINA COASTAL COUNTRY MUSIC FESTIVAL

3 – 5 October

Various locations throughout Ballina

ballinacountrymusic.com

BALLINA ROTARY CLUB

22ND ANNUAL GREAT DUCK RACE

5 October

Fawcett Park, Ballina

ballinarotary.com

MOBILITY CAPERS

18 October

Missingham Park, Ballina

Michael Jones 0438 250 410

ballinarotary.com

SECOND HAND SATURDAY

25 October

Various locations throughout Ballina Shire

secondhandsaturday.com.au

BALLINA SHIRE RELAY FOR LIFE

1 – 2 November

Kingsford Smith Park, Ballina

fundraising.cancer.org.au/ballinashire2014

CINEMA UNDER THE STARS

7 November, 5.30pm – 9.30pm

Missingham Park, Ballina

newcastlepermanent.com.au/Community/Cinemaunderthestars

BALLINA PRAWN FESTIVAL

15 November, 9am – 9pm

Missingham Park, Ballina

ballinaprawnfestival.com.au

LENNOX HEAD CAROLS IN THE PARK

7 December, 5.30pm – 9pm

Williams Reserve, Park Lane, Lennox Head

Louise Owen 0408 874 525

RIVERSIDE CAROLS

14 December, 6.30pm – 9pm

Seagulls Football Oval, Ballina

Shelley Moss 0401 889 360

riversidecarols.org.au

For further information on events in the Ballina Shire visit discoverballina.com or telephone 1800 777 666.

EVENT WRAP UP

HMAS Labuan

In early August, the Ballina community received a rare treat when the Royal Australian Naval ship, HMAS Labuan made a final call into Ballina as part of its decommissioning voyage.

The ship proudly exercised its Right to Freedom of Entry to Ballina one last time and was welcomed into port with celebrations that included a march involving the Labuan Ship's Company, navy cadets and ex-naval veterans.

Despite the rain the HMAS Labuan's Open Day was a huge success with visitor numbers exceeding expectations. People seized the opportunity to engage with the crew, learn about the history of the vessel and tour the retiring ship while she was berthed at the Lance Ferris Fawcett Street Wharf.



Better Homes and Gardens in Ballina

This August, Ballina played host to some special visitors when the team from award winning lifestyle show Better Homes and Gardens spent two days filming at Bunnings Ballina.

The weekend was packed full of demonstrations and events that entertained the locals, who were encouraged to meet and interact with all of the show's popular hosts, grab an autograph and witness some of the behind-the-scenes action.

Highlights of the weekend included The Great Prawn BBQ Cook off, a demonstration on how to build your own surfboard rack and Putt Putt course, and the popular Doctor Harry showing everyone how to teach tricks to their dogs.

Other segments for the show were filmed around Ballina over the course of the two day filming event. The show will air on **Sunday, 3 October, on Channel 7**, so make sure you tune in!

Images: courtesy Channel 7



RISING STARS SCHOLARSHIP

Southern Cross University Rising Stars Scholarships 2015

Ballina Shire Council is a proud supporter of the Southern Cross University Rising Stars Scholarship Program.

Southern Cross University (SCU) is currently seeking applications for the 2015 scholarships.

Applications for the Council Scholarship are open to Ballina Shire residents wanting to study their first fulltime undergraduate degree at Southern Cross University.

The scholarship is for \$5,000 per year for three years.

For further information visit scu.edu.au/risingstars or telephone SCU's Scholarships Office on 6620 3313.

Applications close 31 December 2014.

Rising Stars Scholarship Award Ceremony 2014. From left The Hon John Dowd AO QC, Chancellor of Southern Cross University; Matthew Smith, Scholarship recipient, Cr Sue Meehan, Ballina Shire Council.

Scooter Wise

HOW TO SAFELY USE YOUR MOTORISED SCOOTER

Are you a NEW motorised scooter user?

Are you thinking of BUYING a motorised scooter?

Then this motorised scooter education and introductory training is for you.

The workshop will cover:

- Your rights and responsibilities
- Essential abilities and skills required to use a scooter
- Choosing the right scooter
- Travel safely on your scooter
- Practical training provided

Date: Wednesday 1 October

Time: 10.00 am – 12.00 noon

Venue: The Richmond Room
Regatta Avenue, Ballina

Maximum 5 persons per session.
Morning tea provided

Bookings essential for these free workshops

Contact Jodie Hewett, Road Safety Officer, Ballina Shire Council
Ph: 6686 4444



Community Focus On... TINTENBAR UP FRONT

If you like live music, entertainment and great food, set aside the second Friday of the month and head to the Tintenbar Hall for Tintenbar Up Front.

Tintenbar Up Front (TUF) started in October 2012 to give musicians an alternative venue to a pub or club...and it has been an incredible success.

TUF aims to create a fun, supportive environment for people to perform and audiences to enjoy the performances. The monthly event is appropriately held in the old Tintenbar Hall which has been a community entertainment venue for more than 100 years.

TUF has been an outstanding success and the money raised from the evenings is donated to a number of charities every month. So far, more than \$14,500 has been given to worthy causes.

Tintenbar Up Front is held on the second Friday of the month.

For more information go to tintenbarupfront.com.



SWIM INTO SUMMER AT THE BALLINA & ALSTONVILLE POOLS

Take the opportunity to get fit and meet new people at your local pool.

Season tickets are available for the Ballina and Alstonville pools and they can be used at either pool. EFTPOS facilities are available.

Alstonville Heated Pool – Ph 6628 0826

Mon to Fri 6.00am to 6.00pm

Sat 8.00am to 6.00pm

Sun and Public Holidays 10.00am to 6.00pm

Ballina Memorial Swimming Pool – Ph 6686 3771

Mon to Fri 6.00am to 6.00pm

Sat 8.00am to 6.00pm

Sun and Public Holidays 9.00am to 6.00pm



Position with Council and some details about your duties in that position?

Acting Team Leader Visitor Services – overseeing the Ballina Visitor Information Centre and the Visitor Services desk at the Ballina-Byron Gateway Airport, meeting and inspiring visitors to enjoy all that our area has to offer, assisting local tourism operators to promote their businesses and also marketing our region to Australia and the rest of world. I get to manage the friendly and great team here at the VIC and our dedicated band of Volunteer Airport Ambassadors – love my job!

How long have you been with Council?

Approximately seven years.

What aspects of your job do you like most?

Working with our friendly team, meeting people from all walks of life and promoting the most beautiful region in the world – easy when you are passionate about where you live!

What were you doing prior to working for Council?

Working at Paradise FM Community Radio (still there on Saturday mornings!) Also property management at Ballina Fair Shopping Centre Management and a Legal Secretary prior to that.

What do you like to do in your spare time?

Spending time with my three boys, friends & family, riding my bike and hanging out at any of our beautiful beaches, dancing, enjoying fine red wine and of course, having holidays.

What's the best movie you've seen?

Mmmmm that's a tough one – Silence of the Lambs, but I love a good Australian comedy.

Most amazing place you've been to?

Uluru and most recently Santorini in the Greek Islands.

What music do you listen to?

All sorts of music – my taste is so varied but I will always love Prince, ACDC and ABBA – see what I mean?

What can't you live without?

My three boys.

Where were you born and raised?

Born in Camperdown and raised around Earlwood in Sydney.

If I won a lot in the lotto I would....

Spoil myself and my family, travel the world, donate to charities to help mental health services in Australia and hopefully have enough left to buy a vineyard specialising in the tempranillo grape variety – my favourite red wine.

I wish I had... a special talent for singing (LOL) OR if I had the chance I would travel to South America.



IN PROFILE

Clare Barry

Why Art? What inspired you?

Ever since childhood I've always felt compelled to express myself through drawing and painting. What inspires me are things that are part of my everyday life that make an impression on me both visually and emotionally.

What type of art/artists do you most identify with and why do you think that is?

Australian artists of the late 1800 hundreds and early 1900 hundreds, such as Tom Roberts, Frederick McCubbin, Arthur Streeton and Rupert Bunny just to name a few. I also love the work of present day artists, like Robert Hannaford and Angus McDonald. This is due to their skilful and somewhat romantic depiction of Australian rural life and their superb use of light and colour.

Describe a real life situation that inspired you?

One of the paintings I have included in the exhibition is of my horse Sunny; it was inspired by a simple moment of seeing him looking out over the stable door and the darkness of the stable behind him framing his head, bringing out so many colours in his coat. The painting was done very quickly with a plate knife.



Frances Belle Parker



Why Art? What inspired you?

Art is my voice, my way of documenting and telling a story, I am inspired by my mother's homeland, the Yaegl (Lower Clarence) landscape.

Describe a real life situation that inspired you?

Growing up, my father had an old poster framed hanging in his living room. On this poster was the text 'Always was, always will be, Aboriginal land', these strong words still strongly reflect my sense of sovereignty within much of my art.

If you weren't an artist what would you be?

Unhappy and unfulfilled, but I guess if I wasn't an artist I wouldn't be aware of how important having the ability to create art really is to me. Profession wise, I'd probably be a chef, or hairdresser, or national park ranger.

Image courtesy of Arts Northern Rivers, photography by Cher Breeze.

CURRENT EXHIBITIONS

27 August to 5 October 2014

Equine Inspired – Group Exhibition

"Equine Inspired" is a suite of exhibitions that celebrates the close relationship between man and horse by bringing together individual artists and craftspeople who have a strong material or conceptual connection with these beautiful majestic animals. Coinciding with the Emirates Melbourne Cup Tour, Ballina Cup Race Day, Ballina Jockey Club Centenary Celebrations and the Coastal Country Music Festival, this exhibition presents an amazing selection of works in painting, sculpture, textile and millenary craft.

Foyer Gallery

The Nature of Millinery - Julie Casey



Julie Casey, Sea Shells, 2014

The Nature of Millinery presents an elegant assortment of stylish and innovative race day hats and headwear; hand-crafted using natural products such as banana leaf fibres, silks and natural straws. With nature being the main inspiration, each exquisite headpiece is carefully designed to exploit the natural flow of the chosen material, drawing attention to its unique beauty and the art of millinery.

Gallery 1

An Equine Way of Life – Clare Barry

As a local artist from Coraki, Clare has been involved with horses all her life. Drawing on her Equine Way of Life and the nature of the majestic animals as a source of inspiration, Clare's paintings capture dynamic moments shared between rider and horse in scenes from rodeos and camp drafts.

Clare Barry, Barrel Racing at Maclean, 2014



Gallery 2

Pieces of Eight – Suzanne Fraser, Ruth Park & Louise Fulton



Each artist explores themes of prestige and wealth symbolised by the Spanish Silver Dollar, formerly a dominant currency in the development of trade worldwide. Ideas of power, wealth and prestige are inspired by its influence on Australian and Chinese cultures. Louise references the Holey Dollar and connections to ancient Jade Bi discs of Central Asia, while Ruth

presents exquisite Jade-like vessels on pedestals reminiscent of the horse shoe arches of Cordoba, Spain. In China, eight horses together are considered economically auspicious. Sue continues an Asian equine theme and ideas of human horse connections by presenting two series of eight equine ceramic sculptures and wall works.

Ruth Park, Pedestal Bowl, 2014



Gallery 3

The Fiasco of the Forlorn Soul - Wendy Powitt



Wendy's hand embroidered wall works and jewellery are a labour of love. The artist uses prose and imagery on horsehair for her wall works and fantastical jewels that merge vintage and sacred objects, fashion and myth, to both decorate and protect the wearer.

Wendy Powitt, *Locate*, 2014

Gallery 4

The Tack Room - Peter Mortimore & Scott Bridle

The Tack Room presents the works of two talented equine artists, Peter Mortimore and Scott Bridle, in a series of drawings, paintings and photography including exquisitely hand crafted tack from the artist Peter Mortimore's personal collection. For Peter and Scott, 'horse tack' is point of departure to explore complex narratives of mateship between rider and horse in the Australian outback.

Peter Mortimore, *Stock Saddle*, 2009



ART AT THE AIRPORT

September – October 2014

Frances Belle Parker

During September and October NRCG's Art at the Airport program at Ballina Byron Gateway Airport will showcase two works by celebrated Indigenous artist Frances Belle Parker.

Frances Belle Parker is a proud Yaegl woman, painter and installation artist from Maclean, New South Wales. She is deeply inspired by her Mother's land (Yaegl land) and the island in the Clarence River that her Mother grew up on, Ulgundahi Island.

The Maclean artist's works are portraits of Yaegl landscape and its history: all of which reflect her passion, determination and deep seated respect to the memories handed down to her by the Yaegl elders.

Frances Belle Parker, *Always*, 2013



UPCOMING EXHIBITIONS

8 October to 2 November 2014

Digby Moran - Solo Exhibition



Bundjalung elder Digby Moran returns to the Northern Rivers Community Gallery (NRCG) for a solo exhibition. Born in Ballina and raised at Cabbage tree island in the Richmond River, Digby is a self-taught artist who paints prolifically, and his work speaks from the heart and soul: imbued with memories and stories from his childhood. The exhibition showcases

his visions of the Bundjalung culture and the natural pulse of the country.

5 November to 30 November 2014

Twelve +3

The twelve + 3 exhibition showcases work by artists based on the North and Mid North Coast of NSW and is an initiative of the Accessible Arts North Coast Creating Connections project. A culmination of over two years of discovery, support, mentoring and promotion of artists with disabilities across the area and most importantly to assist in providing mainstream opportunities for these artists, this exhibition aims to showcase the diversity of contemporary art coming out of the regions by 12 individual artists and three supported studios.

Alyssa Black, *Still Life after Goya's Butcher's Counter*, 2013



November – December 2014

Art at the Airport – Damien Conte



Damien Conte is a young artist with a limited ability to communicate verbally, using instead his art to share his inner world with others. Damien renders his works in a childlike, naïve style detailed with marker pen line, pattern and text, vivid colour and texture.

Damien Conte, *Solar Effects*, 2014

3 December – 21 December

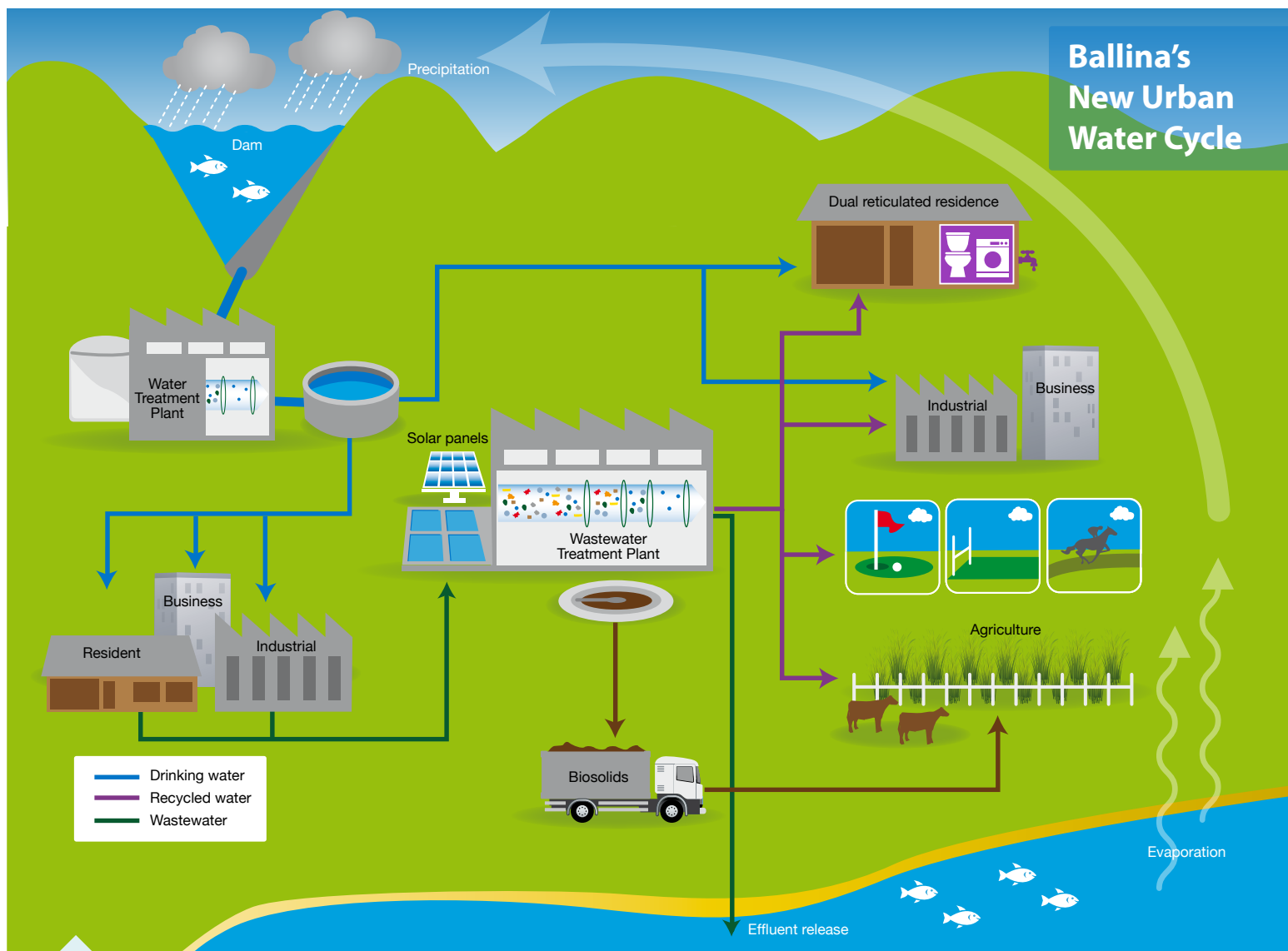
Ballina Art Society – Summer Dayz

The tantalising change of seasons as summer approaches, with its colours, vibrancy, excitement, holiday atmosphere, sometimes oppressive weather, and the family connection are all things we will represent in this exhibition. This exhibition is a group presentation of artworks created by our talented artists, all with different styles and approaches to their work.

Helen Craig, *The Birthing Tree*, 2014



water talk



BALLINA'S NEW URBAN WATER CYCLE

Crystal our new recycled water drop will travel to new housing estates and businesses early next year and is already watering a lot of our open spaces.

Her purple colour represents the colour of the pipes that recycled water must travel in.

The use of purple pipes for recycled water helps consumers distinguish it from drinking water and is used by all countries around the world.

THE WORLD'S WASTEWATER

In 1960 the world population was 3 billion people, today it stands at over 7 billion. More people on this planet means more fresh drinking water is used and more wastewater is generated. Historically no one saw any value in wastewater. It was just used for removing our waste.

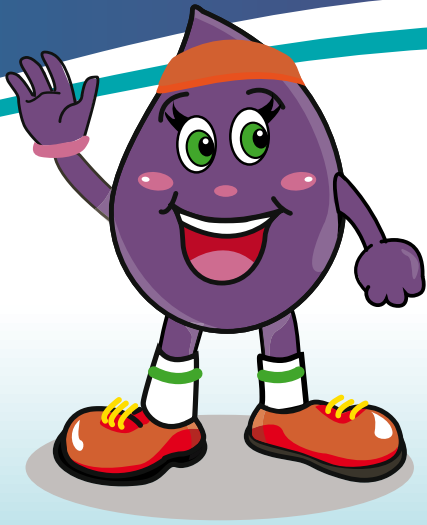
The natural link between drinking water and wastewater was lost as the technology didn't exist to quickly and safely remove bacteria. For public health reasons it was easier to keep them as two separate circuits.

Today new membrane technologies and reliable ultra violet disinfection allow wastewater to be treated so effectively it is often cleaner than water from natural sources. The more

treatment the water goes through, the more things it can be used for. The most exciting part about wastewater is that there is an endless supply of it. It's a completely reliable source of water that will only ever increase as our population continues to grow.

With many countries facing population growth and changing global patterns such as drought, the natural link between water and wastewater is excitingly being restored. Japan today has over 1,800 water recycling projects, Europe over 200 and Australia has over 450 all with varying treatment levels and recycled water applications.

Crystal travelled the globe to find out how other countries are now valuing their wastewater....



Ballina's own recycled water drop Crystal has travelled the globe to find out how other countries are treating their wastewater....

Did you know?

WWTP stands for Wastewater Treatment Plant

NETHERLANDS' WWTP

- Europe complies with the 'European Urban Waste Water Treatment Directive'
- Europe is working together to deal with their wastewater discharges
- Half of Europe is currently in water stress (using more water than it naturally has)

KUWAIT'S WWTP

- Produces recycled water for agriculture, industry and aquifer recharge for future drinking
- Has reduced Kuwait's annual drinking water demand by 80%

SINGAPORE'S WWTP

- Singapore has five NEWater WWTP's
- NEWater is the brand name of Singapore's drinkable recycled wastewater
- NEWater currently meets 30% of Singapore's total water demand



NETHERLANDS

KUWAIT

SINGAPORE

TEXAS



TEXAS' WWTP

- Mixes recycled water with lake water for drinking purposes
- Produces 15 Olympic swimming pools of drinking water daily
- Stage 5 water restrictions are in place due to drought

ANTARCTICA'S WWTP

- Produces purified recycled water for ocean release
- Fits inside two shipping containers

DAVIS STATION, ANTARCTICA

water talk

Fluoride Dosing for Marom Creek Water Treatment Plant

Work is underway to fluoridate the water supply at Wardell. New equipment is being installed at the Marom Creek Water Treatment Plant which supplies drinking water to the Wardell community.

The new plant will take around 14 weeks to install and is expected to be operational towards the end of this year.

Water to other urban parts of the Ballina Shire will also be fluoridated. This is the responsibility of Rous Water, as the water supply authority, and it is expecting to be switching on its fluoridation technology by the middle of next year.

Ballina Shire Council, having considered the policy and advice of the NSW Government, decided to fluoridate the water supply to improve the health and well-being of our residents. Extensive research supports water fluoridation as an effective measure in preventing and reducing tooth decay.

Residents do not need to do anything in preparation for fluoridated water and when the change is implemented residents should not notice any difference in taste or water quality. For residents who would prefer not to receive the fluoridated water, fluoride filters can be purchased through local plumbing and building stores.

For more information visit ballina.nsw.gov.au/fluoride



BALLINA SHIRE COUNCIL'S

PRESSURE AND LEAKAGE Management Plan

If you see Council staff members digging for water pipes around town over the next few months, the work is part of Ballina Shire Council's plan to reduce water loss.

The plan is to divide the Shire into different water zones so that Council can:

- > More quickly locate and fix leaks and breaks
- > Reduce unnecessarily high water pressure

Changes to traffic conditions may occur and anyone affected by water interruptions will be contacted directly by Council.



For more information please phone the Water Group on 6686 4444

BALLINA'S BIOCHAR PROJECT

Ballina's Biochar Project is in full swing with expressions of interest for biochar technology providers currently being shortlisted.

Biochar is a carbon rich charcoal-like substance that is produced when organic matter is heated in a kiln in the absence of oxygen. The process also produces a syngas which can be captured and used as an energy source.

Ballina's proposed plant will have the ability to generate up to 7,000 tonnes of biochar and up to 6,000 MWh of renewable electricity annually.

Potential feed stocks for the plant include:

- Green waste (parks and gardens organics, verge and power line clearing, horticultural and agricultural residues)
- Garden organics and food waste from kerb-side pick-up from Ballina Shire Council and other surrounding councils
- timber and wood waste (excluding mixed construction and demolition waste)
- Biosolids from Ballina Shire Council's wastewater treatment plants.



Lennox Head's new bin enclosures to be trialed in the Ballina CBD

In August 2013, six bin enclosures were placed in strategic locations in the Lennox Head village centre to separate waste and recyclable materials.

The project was funded by the EPA's Waste and Sustainability Improvement Program (WaSIP) and Ballina Shire Council.

The bins have been audited on a fortnightly basis for the last 12 months with pleasing contamination rates of less than 4%. A trial of similar enclosures is now underway in Ballina CBD.

This project reinforces Council's waste minimisation strategy and represents a better environmental outcome than sending the recyclables to landfill.

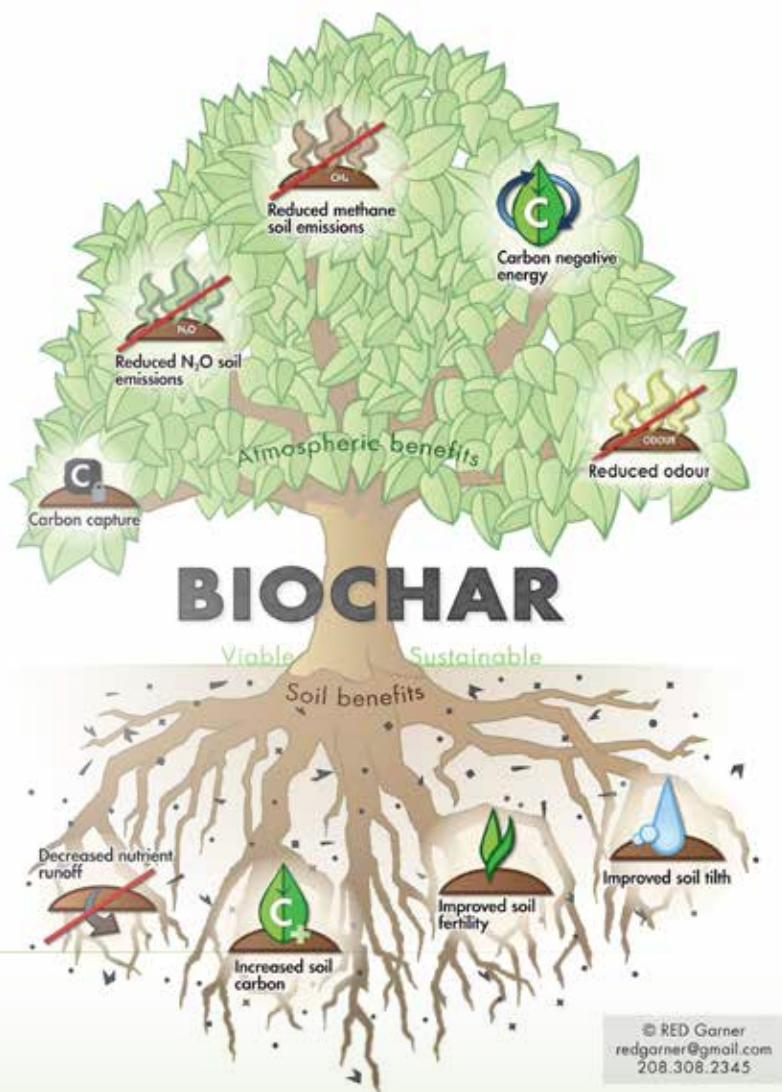


SECOND HAND SATURDAY 25 OCTOBER

If you're a **school, community or sports group**, it's a great opportunity to get together and hold a combined sale at your school, club or church.

You could have a sausage sizzle or bake some goodies to make more money.

Registrations are now open so visit secondhandsaturday.com.au to register your event.



What to do during the *School Holidays*

Looking for something to do with the kids or grandchildren over the school holidays? There's something to satisfy all interests including educational, sporty and creative activities to keep the kids entertained.

EDUCATIONAL

Australian Seabird Rescue Tours

Daily educational tours - \$5 entry fee
10am to 11am
Monday to Fridays during school holidays
264 North Creek Road, Ballina
Ph: 6686 2852
admin@seabirdrescue.org
seabirdrescue.org

Crawford House Museum

Enjoy local history and displays in an original farmhouse.
Open: Fridays 10am to 4pm and Sundays 1pm to 4pm
10 Wardell Road, Alstonville
Ph: 6628 5457
info@aphsmuseum.org.au
aphsmuseum.org.au

Ballina Library

Storytime for 2-5yrs
Time: 11am
Dates: Tuesdays & Fridays.
Make a diorama, make a treasure box and spring gardening workshops also planned
8 River Street, Ballina
Ph: 6686 2831
rtrl@rtrl.nsw.gov.au
rtrl.nsw.gov.au

Lennox Head Library Workshop

Range of craft activities for the young ones age 5+, bookings essential
Dates: Tues 23/9, Fri 26/9, Mon 29/9 & Fri 3/10
Time: 11am
Lennox Head Cultural & Community Centre
Ph: 6687 6398
rtrl@rtrl.nsw.gov.au
rtrl.nsw.gov.au

Ballina Naval & Maritime Museum

Explore the history & enjoy the extensive displays
9am to 4pm
Open 7 days
Regatta Avenue, Ballina
Ph: 6681 1002
ballinamaritimemuseum.org.au

FAMILY FUN

Amaze N Place

Free alpaca feeding every day at 11am plus lattice maze, puzzles, sandpit, cubby house and café
Open 10am – 4.30pm
Sat 20 Sept – Sun 5 Oct
149 Wardell Road, Alstonville
Ph: 6628 6286
amaze-n-place.com.au

Ballina Tenpin Bowl

Holiday special
2 games for \$14
Glow in the dark bowling
12-4pm
Open until late Fri & Sat
Open 7 days
16 Clark Street, Ballina
Ph: 6686 5342
ballinatentpinbowl.com.au

Macadamia Castle

Wildlife exhibits, animal keeper talks, feeding experiences and bunny petting.
8am – 5pm
Open 7 days
1699 Pacific Highway, Knockrow
Ph: 6687 8432
info@macadamiacastle.com.au
macadamiacastle.com.au

Rainbow Children's Centre Inc

Rainbow Holiday Club
Vacation Care
Fun based excursions for 11-14yr olds
22 Sept – 3 Oct,
8.30am – 4.30pm
Ph: 6686 6621,
bookings essential
rainbowchildrenscentre.com.au

Summerland House Farm

Tractor ride, water spray park, gardens, playground, mini golf, heritage cottage, The Grocer & Café
9am-4pm, Open 7 days
253 Wardell Road, Alstonville
Ph: 6628 0610
summerlandhousefarm.com.au

Teven Valley Golf Course

Holiday special kids hire clubs free when playing with an adult
8am to dusk, Open 7 days
1684 Eltham Road, Teven
Ph: 6687 8386
tevenvalleygolfcourse.com.au

Thursday Plantation

Enjoy the Verandah Café, rainforest walk, sculpture garden and tea tree maze.
Open weekdays from 9am-5pm and weekends from 10am-4pm
Gallans Road, Ballina
Ph: 6620 5150
thursdayplantation.com

Victoria Park Nature Reserve

300m boardwalk loop with BBQ and picnic facilities in the picturesque "Big Scrub" remnant. Collect the 30 Great Walks brochure from the Visitor Centre for many more walks in the region.
Victoria Park Road, Dalwood

Crystal Castle

Magic gardens, ancient labyrinth and rainforest
10am to 5pm, Open 7 days
81 Monet Drive, Mullumbimby
Ph: 6684 3111
info@crystalcastle.com.au
crystalcastle.com.au

Richmond Princess River Cruises

Enjoy morning or afternoon tea aboard the Richmond Princess cruising the Richmond River
10am-12noon or 2-4pm
Wednesdays and/or Saturdays/Sundays.
Bookings essential
Regatta Avenue, Ballina
Ph: 0427 699 317
rrcruises.com.au

Lake Ainsworth

Splash in the fresh tea-tree waters.
Picnic & BBQ facilities available.
Pacific Parade, Lennox Head

SPORTY FUN

Kayak Ballina

Guided kayak tours of Ballina's beautiful waterways. Basic skills lesson included
Daily – bookings essential.
Open 7 days
Ph: 6681 4000
kayakballina.com

Tassiriki Ranch Beach Horse Riding

Daily tours, open 7 days
Moylans Road, Empire Vale
Ph: 6683 4602
tassirikiranch.com.au

Pegasus Park Horse Riding

Daily tours. Open 7 days
946 Friday Hut Road, Tintenbar
Ph: 6687 1446 or 0428 871 446
pegasuspark.com.au

Lennox Head Sport & Recreation Centre

Surf clinic (8-15yrs) - \$130 on 22/9 & 23/9
Surf clinic (8-15yrs) - \$130 on 2/10 & 3/10
Sailing for beginners (10-14yrs) - \$55 on 29/9
Sailing regatta day (10-14yrs) - \$55 on 1/10
Lake Ainsworth raft & ropes Adventure (10-14yrs) - \$55 on 2/10
All activities are 9am – 4pm
Info and bookings: 13 13 02
dsr.nsw.gov.au

Lennox Head Skate Park

Park Lane, Lennox Head

Missingham Skate Park

Kingsford Smith Drive, Ballina

Byron Bay Air Charters

Scenic coastal flights.
Departs Ballina-Byron Gateway Airport. Daily tours, Open 7 days
Southern Cross Drive, Ballina
Ph: 6686 4876
info@byronbayaircharter.com.au
byronbayaircharter.com.au



Classic Aero Adventure Flights

Take a scenic flight in a genuine ex-RAAF warbird plane.
Departs Ballina-Byron Gateway Airport
Daily tours, Open 7 days
Southern Cross Drive, Ballina
Ph: 0432 318 282
classicaero.com.au

Sunrise Cycles

Hire a bike and ride along the Richmond River
Mon-Fri 8am-5.30pm
Sat 8am - 2pm
3 Hogan Street, Ballina
Ph: 6686 6322
facebook.com/sunrisecyclesballinabyron

Transition Cycles

Hire a bike and ride along the Richmond River
Mon, Wed & Fri 9am - 5pm,
Thurs 9am - 5.30pm &
Sat 9am - 1pm
49 River Street, Ballina
Ph: 6686 6522
facebook.com/transitioncyclesballina

Kool Katz

Learn how to hang ten with surf lessons. All equipment provided.
Daily lessons, Open 7 days
Ballina & Lennox Head
Ph: 6685 5169
koolkatzsurf.com

Mojo Surf

Learn how to surf or rent a stand up paddle board. All equipment provided.
Daily lessons, Open 7 days
Ballina & Lennox Head
Ph: 1800 113 044
mojosurf.com/products/byron_bay_surf_school/

Tennis Coaching

Coaching clinic for kids aged 5-18 from 8am - 12noon, bookings essential
23 - 25 Sept
Ballina Tennis Courts,
Burnet Street
Ph: 0400 403 323

Circus Arts Activities

School holiday circus -
1 hour circus skills class,
ages 5-15 years, \$25
Flying trapeze - 5 swings on
the high flying trapeze, ages 5
+, \$50
Tuesday 23 & 30 Sept,
Saturday 27 Sept & 4 Oct
Dolphin Bay Beach Village,
440 South Ballina Road,
South Ballina
Ph: 02 6685 6566

GET CREATIVE

Northern Rivers Community Gallery

See page 18 and 19 for
exhibition details.
Open Wed - Fri 10am - 4pm
Weekends 9.30am - 2.30pm
44 Cherry Street, Ballina
Ph: 6681 6167

Kidz Klub at Lennox Head Cultural and Community Centre

Wed 24/9 - Fri 26/9 &
Wed 1/10 - Fri 3/10
\$20 per session per child or
\$40 per child full day
Morning, afternoon or full day
Bookings essential
1 Mackney Lane, Lennox Head
Ph: 6687 6291

Alstonville Dance Studio Holiday School

Contemporary, jazz, hip-hop
and drama dance school. Open
to people with and without
disabilities.
Ph: 0428 748 294 for class
details in the holidays

Riley Burnett Workshops

Various craft and creativity
workshops.
Bookings essential
Ballina Street, Lennox Head
Ph: 6687 5739
facebook.com/rileyburnettjewellery

Ballina Players

Funsing workshop concert
29 - 2 October
Swift Street, Ballina
Ph: 6681 1149

EVENTS

Ballina Coastal Country Music Festival

Free family concert featuring
popular music artists
Friday 3 Oct, 6.30pm
Ballina Amphitheatre, Kingsford
Smith Drive
River Street Festival
River Street closed for stage
with artists, street buskers,
street stalls and carnival rides
Saturday 4 Oct, 10am - 5pm
River Street CBD, Ballina
Ph: 0419 253 927

North Coast Fishing Bonanza

One of Australia's largest
catch and photograph fishing
tournaments
Wed 24 Sept - Sun 28
September
Ballina Fawcett Park
facebook.com/fishingbonanza

FastTrack - Talent Showcase in Lismore

The quest for talent for shows
like the X Factor & The Voice
Saturday 27 Sept
Lismore City Hall
Ph: 1300 327 801



SKATEBOARDING AUSTRALIA WORKSHOPS



Skateboarding Australia, in partnership with local councils, has formed the Northern Rivers Skateboarding Hub.

The Hub promotes and develops the relevance and popularity of skateboarding in Australia by working with the community to co-ordinate regular, ongoing skateboarding activities in the region's skate parks.

The main activities within the Hub are the free StreetWise clinics, which are part of a national grassroots development program designed to offer youth the opportunity to become actively involved in skateboarding.

StreetWise is all about having fun, socialising, learning safety and etiquette within the skate park and pushing yourself to do the next trick! Skateboarding Australia and the Ballina Shire Council are working hard to promote opportunities for youth involved in skateboarding through the delivery of regular, high quality and professionally managed workshops, taught by nationally accredited coaches, who are dedicated skateboarders within the local scene. All workshops are free to participate, with equipment provided.

Registrations are taken on the day. Participants under 18 will need a parent/guardian to sign the registration form.

To register visit sba.org.au/hubs

For free workshop dates in Ballina visit ballina.nsw.gov.au/sba

If you are hosting school holiday activities contact the Ballina Visitor Information Centre on telephone 1800 777 666 or email balinfo@ballina.nsw.gov.au to include your details in the School Holiday Activities Program. This is made available to visitors via discoverballina.com

What's On!

at your local community facility

Ballina Shire Council has five community spaces across the Shire available to hire for meetings, functions and events. If you are interested in starting a new interest group, sporting activity or community event phone our friendly staff on 6687 6291 or email communityfacilities@ballina.nsw.gov.au.

For further information on the events listed, download the current What's On! Program at ballina.nsw.gov.au/communityfacilities



LENNOX HEAD CULTURAL & COMMUNITY CENTRE (LHCC)

1 Mackney Lane,
Lennox Head



KENTWELL COMMUNITY CENTRE (KCC)

20 Bangalow Road,
Ballina



THE RICHMOND ROOM (RR)

Regatta Avenue,
Ballina



BALLINA SURF CLUB FUNCTION ROOMS (BALLINA SC)

65 Lighthouse Parade,
Ballina



ALSTONVILLE LEISURE & ENTERTAINMENT CENTRE (ALEC)

42-46 Commercial Road,
Alstonville

COMMUNITY GROUPS

Alstonville Book Club

ALEC
1st Monday of the month
10:30am – 12:00pm
Alstonville Library
6628 5527

AMORC

KCC
3rd Saturday of the month
2:00pm – 4:00pm
Helen Luxor 6685 7736
amorc.org.au

Ballina Camera Club

KCC
2nd and 4th Thursdays
of the month
6:00pm – 9:00pm
Mark Davis 6686 6915
email mark@baaf.com.au

Sing Australia

KCC
Every Tuesday evening
7:00pm – 9:00pm
Barbara 6628 1557

The Silver Smiths

KCC
Every Wednesday evening
5:00pm – 6:00pm
Helen 6681 6357 or
Norma 6686 3506

COMMUNITY SERVICES

Broadband for Seniors

KCC
Mondays and Thursdays
8:30am – 12:30pm
Phone 6687 6291

Interrelate Family Centres: Outreach Program

KCC
Wednesdays and Fridays
9:00am – 5:00pm
Phone 6623 2750

Northern Rivers Gambling Counselling Service

KCC
Thursdays
By appointment
Phone 6687 2520

RSL Tibouchina Day Club

ALEC
Wednesday 10:00am – 2:00pm
Graham 6628 7196

Ballina Lighthouse RSL Day Club

RR
Thursdays
10:00am – 2:00pm
Fay 6686 3517
Lorraine 6687 4350

HEALTH & WELLBEING



Australian Red Cross Blood Service

RR
Various Mondays
1:30pm – 7:00pm
Tuesdays
9:00am – 2:00pm
Pre arrange by appointment.
Phone 13 14 95

Breast Cancer Support Group

KCC
1st Thursday of the month
10:00am – 11:30am
Robyn 0413 027 446

General Cancer Support Group

Ballina SC
2nd Thursday of the month
10:00am – 11:30am
Robyn 0413 027 446

Deirdre Middlehurst Clinical Psychologist

LHCCC
Thursdays
8.00am – 5.00pm
Deirdre 0467 244 233

Ujali Yoga with Jess

LHCCC
Tuesdays, Wednesdays &
Thursdays
6:00pm – 7:30pm
Jess 0468 348 015

Rachel Reid's Dance Academy

LHCCC
Wednesdays
4:30pm – 7:30pm
Rachel 0402 424 504



INTRA: The Buttery's Drug & Alcohol Outreach Program

KCC
Wednesdays
1:30pm – 3:00pm
Phone 6687 2835

Physical Culture

LHCCC
Every Thursday
5:15pm – 6:15pm
Sharyn 6687 4835
Margaret 6688 2126

Physical Culture

ALEC
Tuesdays 3:30pm – 6:30pm
Jenna 0406 774 992

Bulk Billing Psychologist

LHCCC
Every Tuesday 8:00am – 5:00pm
Chris 0413 725 471

Paediatrician

LHCCC
Every Wednesday & Friday
8:00am – 6:00pm
Dr Uli Schmidt
02 5622 6020
email kilu11@gmx.de

SOL North Coast Nutrition

KCC
2nd and 4th Monday
8:00am – 6:00pm
Christina 6680 8576

HUMANUS Postural Habilitation Classes new

LHCCC
Monday & Friday
7:00am – 8:15am
Courtney 0402 365 335

Sacred Women's Circle

LHCCC
Monthly – full moon dates
7:30pm – 9:00pm
Dominica 0439 678 866

Purna Yoga with Tamika

Ballina SC
Tuesdays and Thursdays
6:00pm – 7:00pm
Phone 0439 451 493

Feldenkrais Movement Class

LHCCC
Tuesdays 11:00am – 12noon
and 4:30pm–5:30pm
Lyn 6687 6815

Healthy Lifestyles by CHEGS

LHCCC
Wednesday
9:00am–10:00am
Bernadette 6687 8989

Yoga Fit new

Ballina SC
Tuesday & Friday
9:30am – 10:30am
Saturday
8:00am – 9:00am
Leona 0434 493 940

Alstonville Aikido

ALEC
Mondays and Wednesdays
7:30pm – 9:00pm
Jim 0404 281 003

Northern Rivers Occupational Therapy

LHCCC
Last Thursday of the month
8:30am – 8:30pm
Roshan 6681 6995 or
0430 358 301

SPORT, GAMES AND COMPETITIONS



Ballina Netball Association

ALEC
Mondays
7:00pm – 8:30pm
Wednesdays
5:30pm – 8:30pm
Thursdays
6:00pm – 9:00pm
Lauren or Taryn 6686 7191

Lennox Head Life Ball

LHCCC
Tuesdays
9:30am – 11:30am
Yvonne 6687 6238

Alstonville Life Ball

ALEC
Mondays
10:00am – 12:00pm
Julie 0413 086 325

United Gymnastics Academy

ALEC
Mon, Wed and Thurs 4:00pm
Kindy Gym 9:30am
Tanya 6628 3533

Northern NSW

Futsal
LHCCC
Monday 4:30pm – 8:30pm
Call 6628 3845

KIDS & BABIES



Angelina Ballerina Dance Academy

LHCCC
Tuesdays 10am – 11am
Phone 6629 1014

Heart of Dance

LHCCC
Mondays 5:00pm – 8:00pm
Phone 0422 846 278

Lennox Head Playgroup

LHCCC
Tuesdays and Fridays
9:30am – 11:30am
(during school terms only)
Tonya 6687 5745

Kidz Klub

LHCCC
September/October
School Holidays
Wed 24 – Fri 26 Sept
Wed 1 – Fri 3 Oct
9:30am – 12:30pm
1:00pm – 4:00pm
See page 23 for details

IN THE LENNOX LIBRARY

Baby Bounce

Every Wednesday morning
10:30am – 11:30am
Phone 6687 6398

Story Time

Every Thursday morning
10:30am – 11:30am
Phone 6687 6398

market calendar

There is a market or two held every weekend in Ballina Shire. Discover original artworks, handicrafts, fashion, jewellery, second hand goods, as well as fresh local produce....or just sit, relax and enjoy fabulous food and the sights and sounds of your local market.

BALLINA MISSINGHAM FARMERS MARKET

Kingsford Smith Drive
Every Sunday
6am – 12noon
0416 048 241

ALSTONVILLE FARMERS MARKET

Bugden Lane Carpark
(behind Quattro Country)
Every Saturday
8am – 12noon
0478 163 038

ALSTONVILLE COMMUNITY MARKET

Alstonville Showground
2nd Sunday
8am – 12.30pm
6628 1568

BALLINA COMMUNITY MARKETS

Canal Road
3rd Sunday
7am – 1pm
6687 4328, 6686 4546

LENNOX COMMUNITY MARKETS

Williams Reserve
2nd & 5th Sunday
From 8am
lennoxmarket@gmail.com

NORTH COAST KIDS & BABIES MARKETS

Lennox Head Cultural & Community Centre,
Cnr Mackney & Park Lanes
August 9th,
October 18th,
December 6th
9am – 1pm
0481 085 920



SWIM SAFELY THIS SUMMER

Lifeguard Patrols

With the start of the warmer weather contracted surf lifesavers and volunteers are again patrolling beaches in the Ballina Shire. For your safety, please swim between the flags.

Patrols normally operate from 9.00am to 5.00pm.

Beach	Patrols start	Patrols finish
Lennox Head	20/09/2014	19/04/2015
Sharpes Beach	20/09/2014 – 6/10/2014 (Spring School Holidays)	
Shelly Beach	20/12/2014 – 26/01/2015 (Summer School Holidays)	
Lighthouse Beach	3/04/2015 – 19/04/2015 (Autumn School Holidays)	

Up-to-date beach and surf safety information is now at your fingertips. Download the free app from **beachsafe.org.au**. The app gives updates on conditions at more than 11,000 Australian beaches.

BeachSafe is brought to you by Surf Life Saving Australia.



download
the free
app

**Don't
dispose
of me yet**

Use this issue of Community Connect to wrap kitchen waste and dispose in the green organics bin.



contacting your councillors

Councillors are here to represent your views. You can contact Councillors in person, by phone or email.

Mayor



David Wright
Mayor
phone 0415 965 403
davidwright@ballina.nsw.gov.au



Susan Meehan
phone 0431 685 666
smeehan@ballina.nsw.gov.au



Robyn Hordern
phone 0410 562 758
robynh@ballina.nsw.gov.au



Ken Johnston
phone 0437 601 715
kenj@ballina.nsw.gov.au



Sharon Cadwallader
phone 0419 973 166
crsharonc@nor.com.au



Jeff Johnson
phone 0438 677 202
jeffjohnson@ballina.nsw.gov.au



Keith Williams
phone 0418 504 644
keithw@ballina.nsw.gov.au



Paul Worth
phone 0428 280 082
pworth@ballina.nsw.gov.au



Keith Johnson
phone 0407 435 573
kjohnson@ballina.nsw.gov.au



Ben Smith
Deputy Mayor
phone 0415 482 412
bens@ballina.nsw.gov.au

COUNCIL CONTACT INFORMATION

Ph: 02 6686 4444
Fax: 02 6686 7035
Email: council@ballina.nsw.gov.au

Web: ballina.nsw.gov.au

Street Address:
40 Cherry Street, Ballina

Postal Address:
PO Box 450, Ballina 2478

Office Hours:
8.15am to 4.30pm Monday
to Friday
(excluding public holidays)

After hours contact:
02 6626 6954

**Council's Community
Access Points:**
Meeting agendas and
documents on exhibition can be
viewed at Council's Customer
Service Centre; Alstonville,
Ballina and Lennox Head
Libraries and Council's website
ballina.nsw.gov.au

