

4.2.3 Avenue Tree Planting

Native avenue tree plantings are recommended for both vehicular approach roads. Trees should be planted as formal avenues using a native evergreen species such as *Waterhousia floribunda* at approximately 15 metres apart. Trees must be planted to avoid driveways and underground services.

Avenue tree planting is proposed for Carlisle and Cedar Streets (west of the Pacific Highway) and Fitzroy and Sinclair Streets (east of the Pacific Highway).

Note: Plantings should be located to avoid overhead powerlines. Where overhead powerlines exist it is recommended that a small growing Lilly Pilly be used for street tree planting e.g. *Syzygium luehmannii*



Waterhousia floribunda tree planting at Murwillumbah



Syzygium avenue tree species



Syzygium avenue tree species

4.3 Precinct No. 3 - Pathway Links

One of the unique features of Wardell Village is the river and village atmosphere. The Landscape Master Plan Report recommend provision of facilities and access throughout the village with an extended off road cycle links to recreation areas and to significant cultural areas.

Proposals include establishment of an off road cycleway that links the sports ground to the river frontage and village centre via Bath and Bridge Drive through to Sinclair Street. Other options recommend long term development including a 'historic information walk' linking the village centre, Fitzroy Street and the foreshore through to the historic cemetery. These walkway links include the proposed industrial sculptures to the western end of Richmond Street and recreation precinct together with an Aboriginal story line from the recreation reserve (Bath Street South) to the cemetery along the river edge.

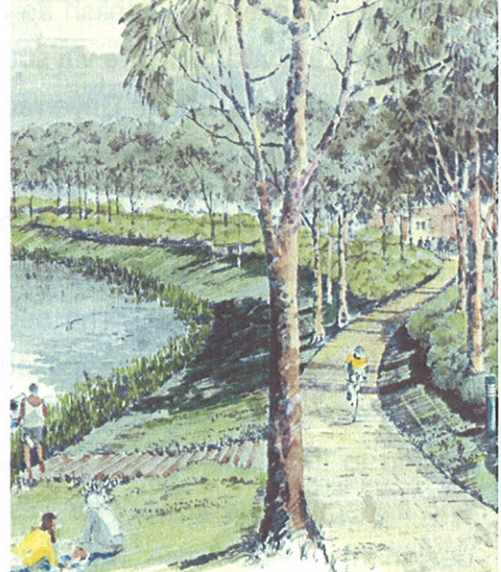


Precinct 3

4.3.1 Bicycle Link

It is recommended that an off-road cycle path (washed concrete) be provided to the eastern side of Bath Street linking the recreation/sports field facilities through to Bridge River and the southern end of Sinclair Streets.

Additional native tree planting should be incorporated in this scheme, however, the major objective is to provide an off-road cycleway that can be used by the local community that links the village centre, recreation/ playground facilities through to the formal sports field and club facilities.



Trail to possibly connect old bridge over Bingal Creek

4.3.2 Historic Cultural Walks

It is also proposed to establish an historic/cultural walk which links the village centre via south Richmond Street, the river foreshore, Bridge Drive recreation precinct and bushland through to the cemetery.

The first part of the pedestrian path includes sculptural artwork depicting the rural history of Wardell refer Industrial artefacts 4.3.3. The second section of path through native bushland is proposed as an interpretation of an Aboriginal story line, which includes drawings related to tribal life and the river as a source of food and transport. The artwork for this walkway should be designed in association with local Aboriginal groups and depict the relationship of the area and early cultural history with the river.



There are government grants available for this Arts style interpretation of local history. This type of trail will be of benefit in both educational terms as well as an informative tourist attraction for Wardell and the community of Cabbage Tree Island.



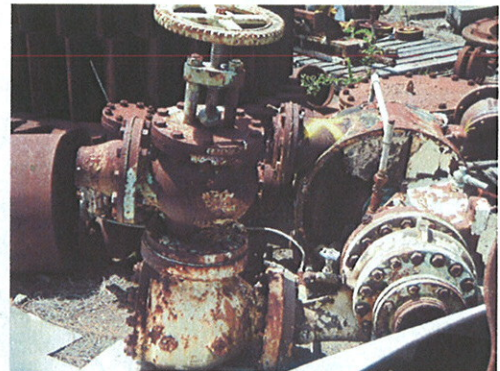
The Blackwall Historical Society is in the process of mapping out historic walks around Wardell. The results of this work will be considered in the detailed designs of this precinct.



4.3.3 Industrial Artefacts/sculpture/public art

The Master Plan proposes introduction of industrial and marine sculptural elements within the western section of Richmond Street through to the recreational precinct.. Elements such as large Metal artefacts, sugar cane mill equipment, timber river barge sections etc. would be placed in a landscaped setting (platforms) to encourage people along the cultural/historic pathway system.

Each of these elements could be fitted with metal signage depicting some of the artifacts of Wardell's historic link to the river and early European settlement. Signage would be a combination of timber and metal designed as low key vandal resistance plaques containing historic information and photographs. Note: Detail designs need to be developed for each of the precinct areas.



Large valve



Old boiler



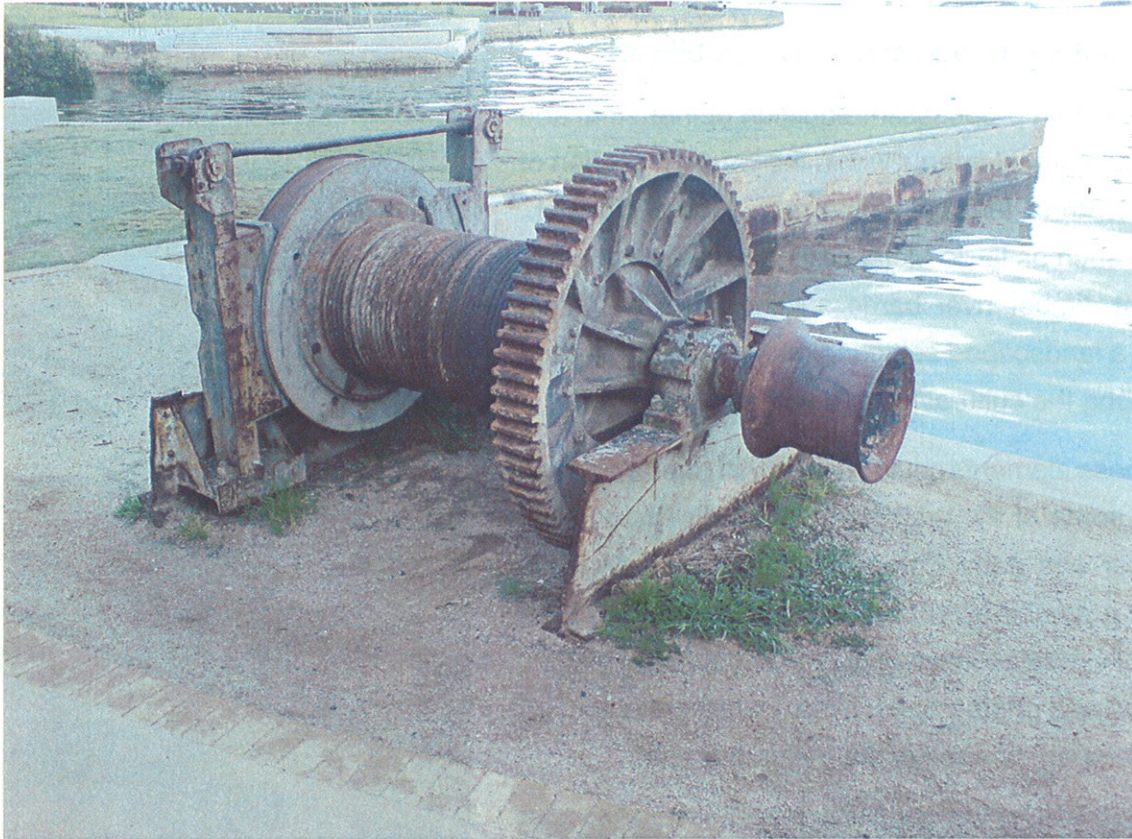
Large cog from the Broadwater Sugar Mill



Large wheel: steam driven flywheel



Historic artefacts / public sculpture elements



Historical artefacts/public sculptural elements



Possible first location of artwork on Richmond Street

4.4 Precinct No. 4 - Improved Riverfront, Public Access and Recreation Facilities

The river frontage and old wharf at the end of Sinclair Street together with the avenue of fig trees in Richmond Street and historic Royal Hotel are the distinctive landscape features that establish the village centre.

Public access and use of the river frontage is limited to the length of riverfront from behind the Royal Hotel and the Bridge. It is desirable to improve not only accessibility to the existing riverfront but to extend the length of public access along the riverfront through to Swamp Street and beyond. This is a long term objective beyond the scope of this study which requires negotiations with the Department of Lands and property owners who have leases and permissible occupancy licences over Crown Lands to the river edge.

There is a relatively steep eroded embankment and deep water to the river at the end of Sinclair Street. Proposals include stabilisation of the embankment adjoining Bridge Drive from the bridge to Sinclair Street, installation of a rock revetment to the existing Fig tree adjoining the Hotel river frontage, improving the beach area (including wider beach & public wheelchair access) to the hotel river frontage and rebuilding the wharf structure for both boat access and recreational fishing.

Recreation facilities have been identified in earlier studies however, it is proposed to upgrade the existing playground near the post office including provision of picnic facilities. The masterplan also recommends establishment of boat ramp facilities on the southern side of the river adjoining the road bridge.



A3 Fold out precinct 4 plan

4.4.1 Recreation Facilities

This precinct is one of the most important landscape and recreational precincts identified in the study. The area includes the river foreshore from the bridge to Swamp Street and the Richmond and Sinclair Street intersections.

Sinclair, Richmond Streets and the river embankment in this precinct form the commercial centre of the village together with the existing recreation facilities and playground adjoining the Police Station and Post Office. Proposals include upgrading the existing playground and recreational facilities. Council should undertake a plan of management / detail design of this park area.

Additional picnic facilities, shelter and general amendments should be investigated as part of Councils detailed management plan.



Upgrade playground and seating platforms



Picnic shelter and BBQ facilities



4.4.2 Embankment Restoration

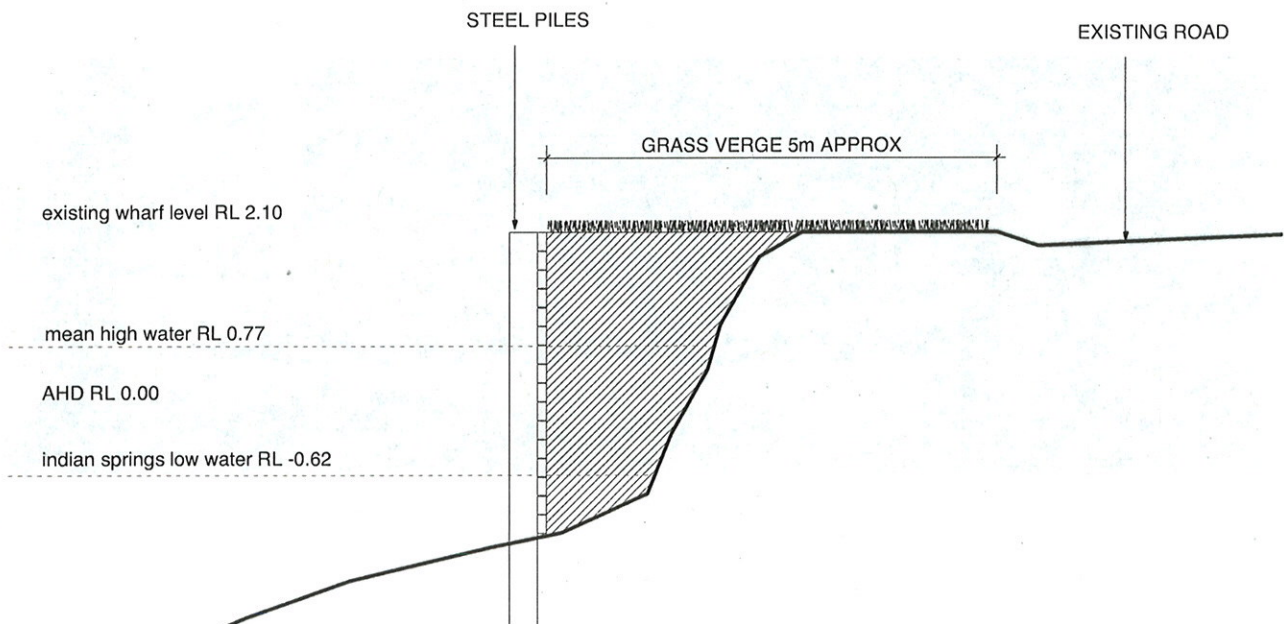
Masterplan recommendations include extension and rehabilitation of the river embankment along Bridge Drive from the Pacific Highway bridge to the old historic wharf. The embankment area needs to be repaired to prevent further erosion and damage to road pavements, power poles etc.

There are two options that need to be considered and a combination of both options may be used.

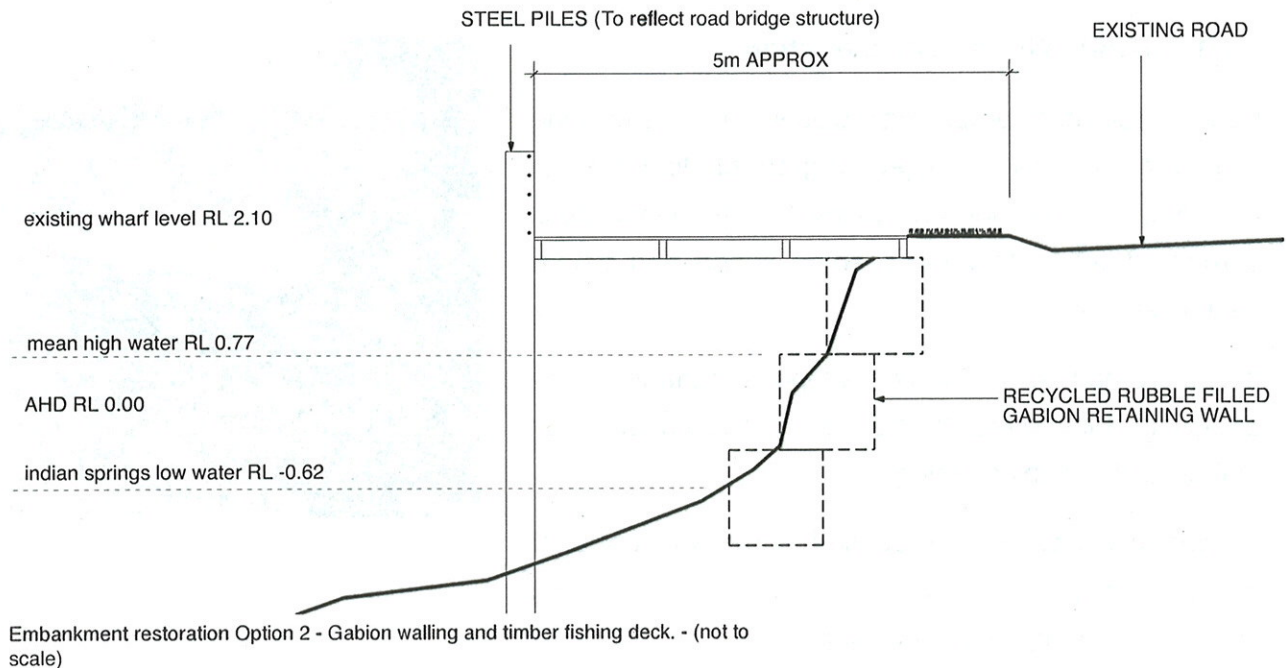
Option 1:

Undertake vertical retention of the embankment including extension of the grass verge with shade tree planting. (refer stage one - precinct four - Foreshore Upgrade)

Tree planting would be located to ensure views from adjacent houses to the river are fully maintained. A pathway and general verge would provide pedestrian access along this section of the river foreshore.



Embankment restoration Option 1 - walling and land fill. - (not to scale)



Option 2:

Involves the use of a recycled rubble filled gabion retaining wall to reinforce the existing wall. A timber deck will then be built on top to achieve the desirable five metre width of foreshore area.



View of main Wardell riverfront on Richmond river.

4.4.3 Historic Wharf Reconstruction

Council is currently proposing replacement of the existing pier (wharf structure) subject to grant funding. Master Plan proposals include an extension of the wharf deck pergola structure to provide some shade and timber seating etc.

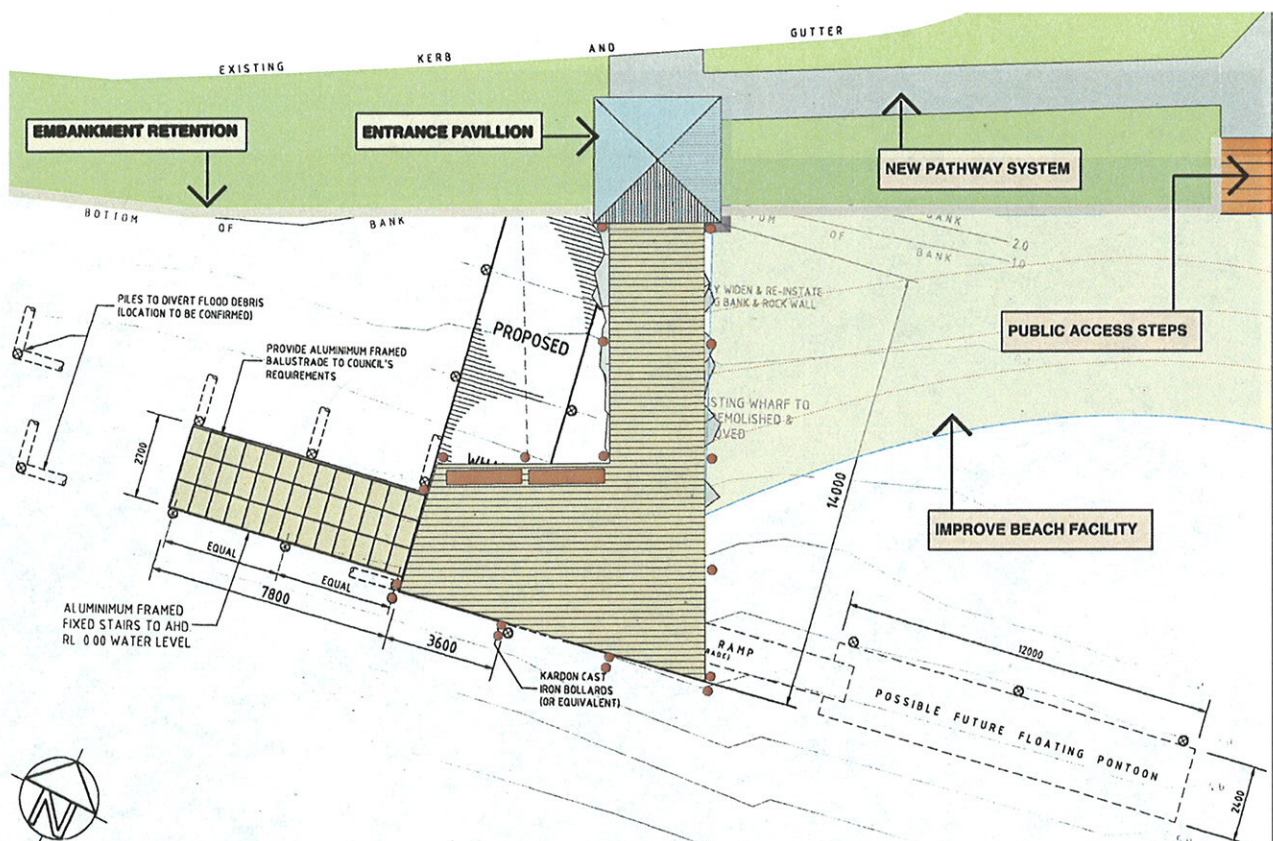
It is also proposed to use steel supports to the wharf as an option which reflect the steel and robust construction of the Pacific Highway bridge.

An entrance pavilion is proposed to provide a shelter structure and improved facility for tourist activities along the river - ferry boat pick-up point.

All old wharf timber may be reused for either signage material or repairs to the old timber bridge over Bingal Creek.



Existing wharf



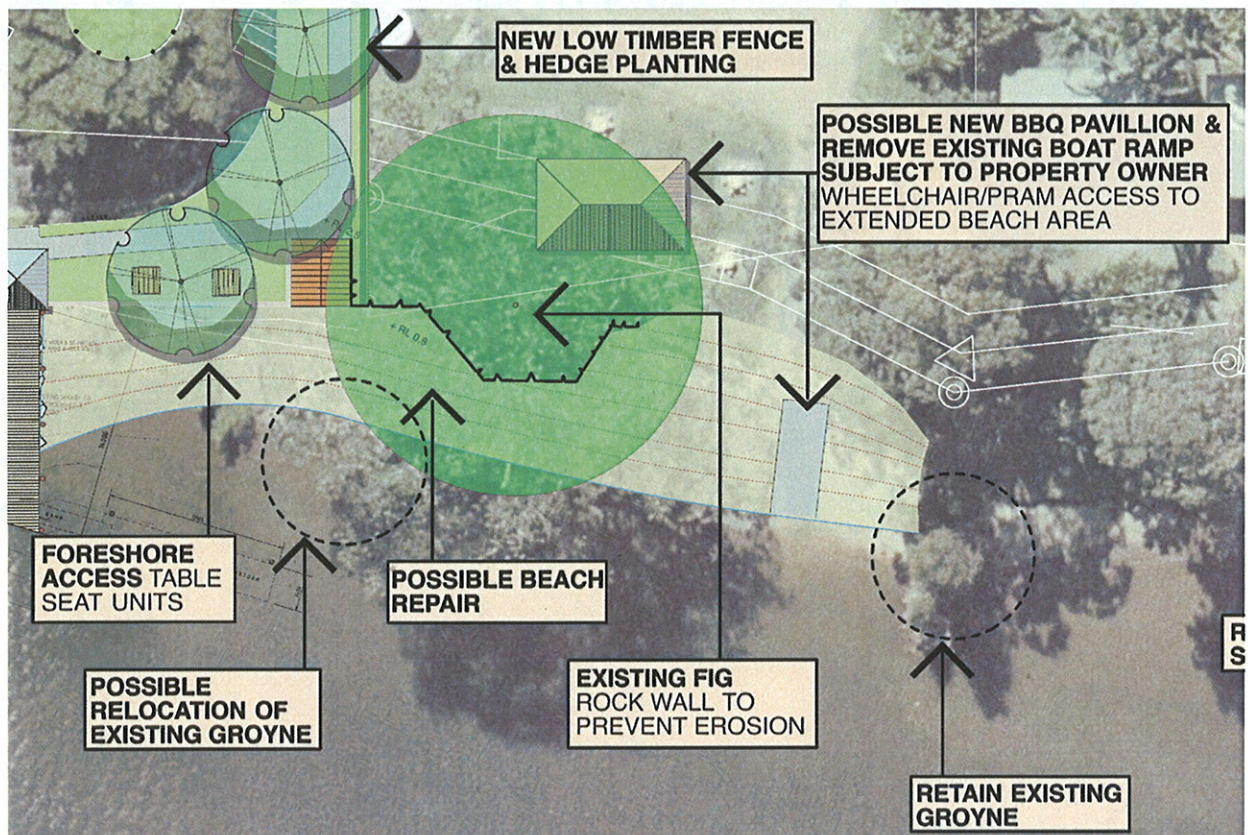
Proposed new wharf design



4.4.4 Beach Improvements

Master Plan proposals include provision of public access to the waters edge including steps, wheelchair access, relocation of rock groynes and additional sand to extend the existing beach and boat access area.

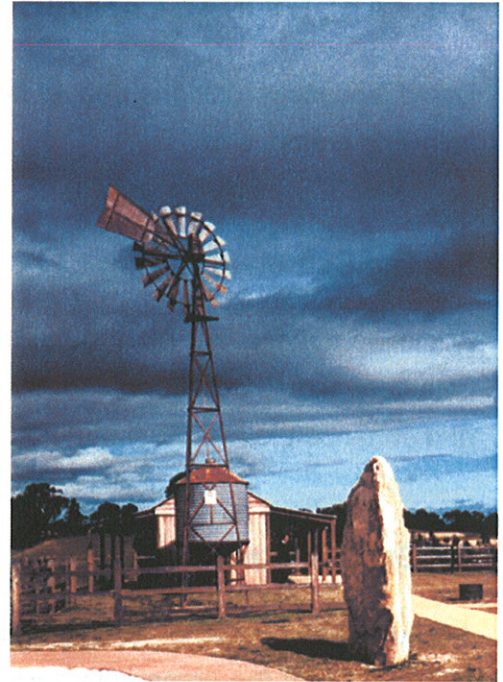
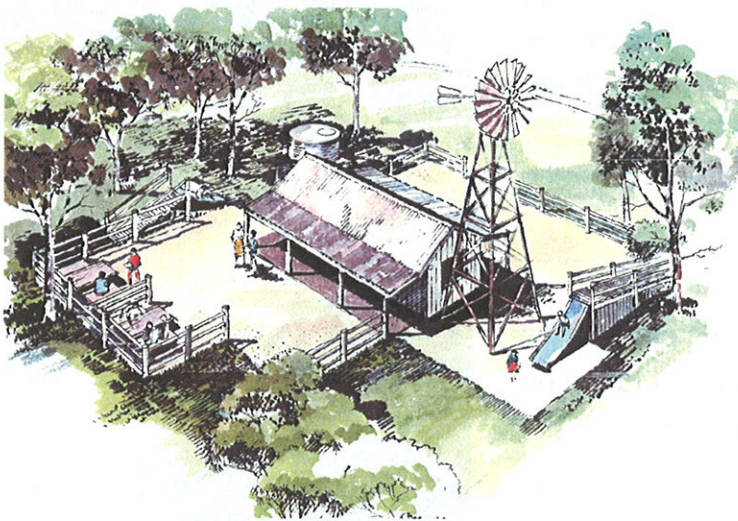
Subject to authority approval extension of the beach will allow additional area for river recreation including boating and water-skiing.



4.4.5 BBQ Picnic Facilities

Subject to separate funding it is proposed to assist private investment for improvement of 'people' facilities at the rear of the existing hotel. A BBQ shelter and new bench/table units, low fence and new footpath area have been recommended for inclusion in the owners proposed hotel restorations. All cost associated with these improvements would be at the property owners expense.

Table seating units and bollards are proposed to the central median lawn/fig tree section of Sinclair Street and public parklands.



4.4.6 Sculptural Focal Point

One option for long term consideration is the establishment of a focal point to the road access of Sinclair and Richmond Streets. The wide central median could accommodate a memorial/sculpture. This feature should be considered as a long term proposal subject to external funding.
- refer maritime flag pole and memorial, Precinct 4, Masterplan.

5.0 ADDITIONAL LANDSCAPE ELEMENTS

Detail landscape designs should be developed for the following areas:

5.1 The Cemetery

A simple landscape plan detailing tree planting of cemetery should be undertaken by Council to preserve and enhance the historic nature of this site.

5.2 General Streetscapes

Avenue tree planting (along footpath) should be undertaken by the community (with plants supplied by Council) to all significant streets, for example, Bath, Carlisle and Cedar Streets.

5.3 Boat Ramp Facilities

It is recommended that Council investigate improvements to the boat ramp facilities (including concrete ramp) on the southern side of the bridge in association with the RTA and Waterways.

Some property acquisition may be required for parking however, facilities should include a concrete boat ramp, fish cleaning facilities with adequate car/trailer parking. This is a long term recommendation however, this facility would assist in providing a viable alternative to the existing hotel boat ramp which is currently located on Crown Land within the village centre prime recreation area and is considered unsafe.

