

LEGEND:

- EXISTING ALIGNMENT
- PROPOSED CURVE RE-ALIGNMENT AT DESIRABLE MIN RADII
- CURVE RE-ALIGNMENT AT ABSOLUTE MIN RADII

LAYOUT PLAN
SCALE 1:2000



| Rv. | DATE | ISSUED FOR ESTIMATES | REVISIONS | REC. | APPR. |
|-----|---------|----------------------|-----------|------|-------|
| A | 02/2009 | ISSUED FOR ESTIMATES | | | |

© Cardno (Qld) Pty Ltd All Rights Reserved 2002.
 Copyright in the whole and every part of this drawing belongs to Cardno (Qld) Pty Ltd and may not be used, sold, transferred, copied or reproduced in whole or in part in any manner or form or on any media, to any person other than by agreement with Cardno (Qld) Pty Ltd.

This document is produced by Cardno (Qld) Pty Ltd solely for the benefit of and use by the client in accordance with the terms of the retainer. Cardno (Qld) Pty Ltd does not and shall not assume any responsibility or liability whatsoever to any third party arising out of any use or reliance by third party on the content of this document.

| | | |
|----------------------------|----------------------|---------------|
| DESIGNED: BSC | A1 | DATUM: A.H.D. |
| DRAWN: NS | | |
| CHECKED: TS | | |
| RECOMMENDED: PROJ. MAN. SK | APPROVED: PROJ. DIR. | |

Cardno (Qld) Pty Ltd ACN: 051 074 992
 Commercial Centre, Isle of Capri
 Gold Coast City, Queensland 4217
 Email: gco@gold.cardno.com.au

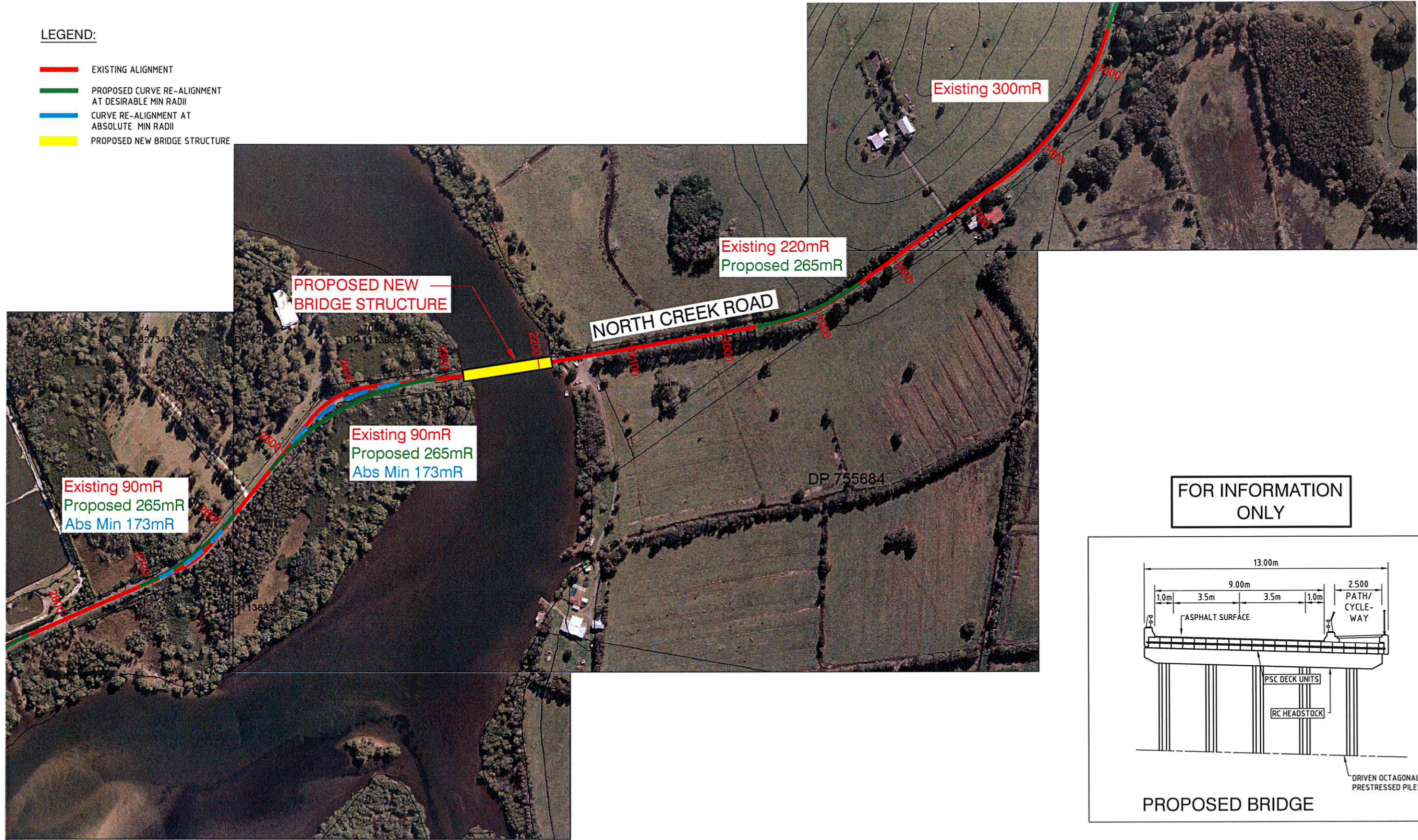
| OFFICES: | TELEPHONE | FAX |
|----------------|--------------------|--------------------|
| Gold Coast | (07) 5539 9333 | (07) 5538 4647 |
| Brisbane | (07) 3369 9822 | (07) 3369 9722 |
| Sydney | (02) 9416 8233 | (02) 9416 8529 |
| Sunshine Coast | (07) 5443 2555 | (07) 5443 5842 |
| Townsville | (07) 4772 1166 | (07) 4721 2508 |
| Hervey Bay | (07) 4124 5455 | (07) 4124 5155 |
| Central Coast | (02) 4323 2558 | (02) 4324 3251 |
| Port Moreeby | (0011675) 325 2322 | (0011675) 325 0951 |
| Philippines | (0011632) 910 5146 | (0011632) 910 5146 |

BALLINA SHIRE COUNCIL
 BALLINA SHIRE COUNCIL ROAD UPGRADES
**NORTH CREEK ROAD - LAYOUT
 & CROSS SECTION Sh 1 of 3**

| |
|-------------------------|
| DATE: FEBRUARY 2009 |
| DRAWING No: CE008667-18 |

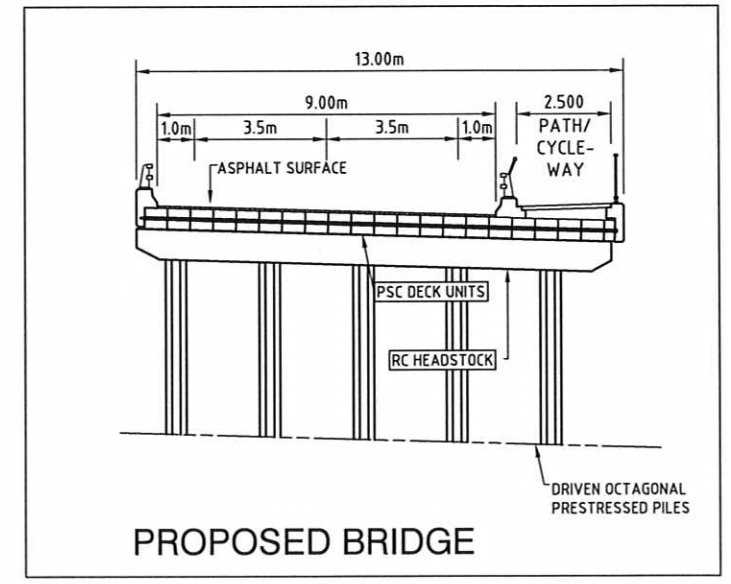
LEGEND:

- EXISTING ALIGNMENT
- PROPOSED CURVE RE-ALIGNMENT AT DESIRABLE MIN RADII
- CURVE RE-ALIGNMENT AT ABSOLUTE MIN RADII
- PROPOSED NEW BRIDGE STRUCTURE



LAYOUT PLAN
SCALE 1:2000

FOR INFORMATION ONLY



PROPOSED BRIDGE



| | | | | | |
|------|---------|----------------------|-----------|------|-------|
| Rev. | DATE | ISSUED FOR ESTIMATES | REVISIONS | REC. | APPR. |
| A | 02/2009 | ISSUED FOR ESTIMATES | | | |

© Cardno (Qld) Pty Ltd All Rights Reserved 2002.
Copyright in the whole and every part of this drawing belongs to Cardno (Qld) Pty Ltd and may not be used, sold, transferred, copied or reproduced in whole or in part in any manner or form or on any media, to any person other than by agreement with Cardno (Qld) Pty Ltd.

This document is produced by Cardno (Qld) Pty Ltd solely for the benefit of and use by the client in accordance with the terms of the retainer. Cardno (Qld) Pty Ltd does not and shall not assume any responsibility or liability whatsoever to any third party arising out of any use or reliance by third party on the content of this document.

| | | | |
|-----------|-----|--------------|---------------|
| DESIGNED: | BSC | A1 | DATUM: A.H.D. |
| DRAWN: | NS | | |
| CHECKED: | TS | RECOMMENDED: | PROJ. MAN. SK |
| | | APPROVED: | PROJ. DIR. |

Cardno
Cardno (Qld) Pty Ltd ACN: 051 074 992
Commercial Centre, Isle of Capri
Gold Coast City, Queensland 4217
Email: gco@gold.cardno.com.au

| OFFICES: | TELEPHONE | FAX |
|----------------|--------------------|--------------------|
| Gold Coast | (07) 5539 9333 | (07) 5538 4647 |
| Brisbane | (07) 3369 9822 | (07) 3369 9722 |
| Sydney | (02) 9416 8233 | (02) 9416 8529 |
| Sunshine Coast | (07) 5443 2555 | (07) 5443 5642 |
| Townsville | (07) 4772 1166 | (07) 4721 2508 |
| Hervey Bay | (07) 4124 5455 | (07) 4124 5155 |
| Central Coast | (02) 4323 2558 | (02) 4324 3251 |
| Port Moreaby | (0011675) 325 2322 | (0011675) 325 0951 |
| Philippines | (0011632) 910 5146 | (0011632) 910 5146 |

BALLINA SHIRE COUNCIL
BALLINA SHIRE COUNCIL ROAD UPGRADES
NORTH CREEK ROAD - LAYOUT & CROSS SECTION Sh 2 of 3

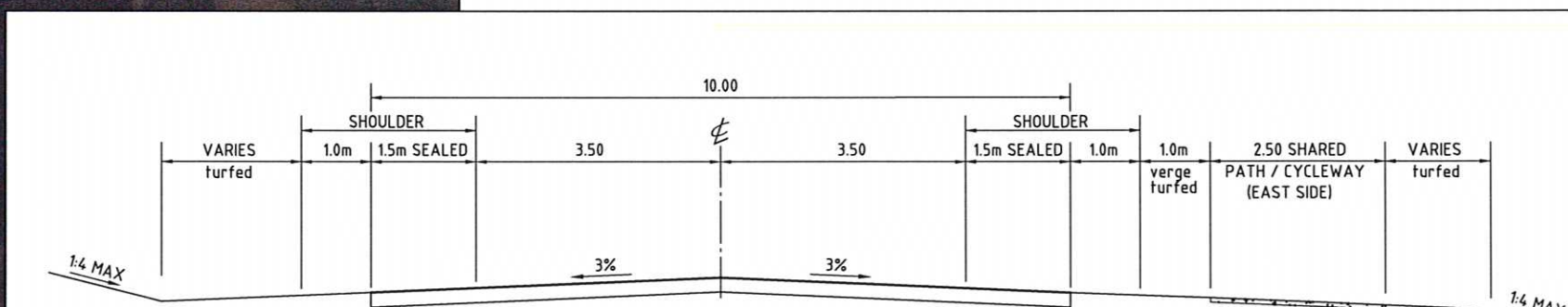
| | |
|-------------|---------------|
| DATE: | FEBRUARY 2009 |
| DRAWING No: | CE008667-18 |

LEGEND:

- EXISTING ALIGNMENT
- PROPOSED CURVE RE-ALIGNMENT AT DESIRABLE MIN RADII
- CURVE RE-ALIGNMENT AT ABSOLUTE MIN RADII



LAYOUT PLAN
SCALE 1:2000



TYPICAL CROSS SECTION
10.0m WIDE ROAD
NORTH CREEK ROAD
SCALE 1:50



| | | | | | |
|------|---------|----------------------|-----------|------|-------|
| Rev. | DATE | ISSUED FOR ESTIMATES | REVISIONS | REC. | APPR. |
| A | 02/2009 | | | | |

© Cardno (Qld) Pty Ltd All Rights Reserved 2002.
Copyright in the whole and every part of this drawing belongs to Cardno (Qld) Pty Ltd and may not be used, sold, transferred, copied or reproduced in whole or in part in any manner or form or on any media, to any person other than by agreement with Cardno (Qld) Pty Ltd.

This document is produced by Cardno (Qld) Pty Ltd solely for the benefit of and use by the client in accordance with the terms of the retainer. Cardno (Qld) Pty Ltd does not and shall not assume any responsibility or liability whatsoever to any third party arising out of any use or reliance by third party on the content of this document.

| | | |
|---------------|----------------------------|----------------------|
| DESIGNED: BSC | A1 | DATUM: A.H.D. |
| DRAWN: NS | | |
| CHECKED: TS | RECOMMENDED: PROJ. MAN. SK | APPROVED: PROJ. DIR. |

Cardno
Cardno (Qld) Pty Ltd ACN: 051 074 992
Commercial Centre, Isle of Capri
Gold Coast City, Queensland 4217
Email: gco@gold.cardno.com.au

| OFFICES: | TELEPHONE | FAX |
|----------------|--------------------|--------------------|
| Gold Coast | (07) 5539 9333 | (07) 5536 4647 |
| Brisbane | (07) 3369 9822 | (07) 3369 9722 |
| Sydney | (02) 9416 8233 | (02) 9416 8529 |
| Sunshine Coast | (07) 5443 2555 | (07) 5443 5642 |
| Townsville | (07) 4772 1166 | (07) 4721 2508 |
| Hervey Bay | (07) 4124 5455 | (07) 4124 5155 |
| Central Coast | (02) 4323 2558 | (02) 4324 3251 |
| Port Moresby | (0011875) 325 2322 | (0011875) 325 0951 |
| Philippines | (0011632) 910 5146 | (0011632) 910 5146 |

BALLINA SHIRE COUNCIL
BALLINA SHIRE COUNCIL ROAD UPGRADES
NORTH CREEK ROAD - LAYOUT & CROSS SECTION Sh 3 of 3

| |
|-------------------------|
| DATE: FEBRUARY 2009 |
| DRAWING No: CE008667-18 |