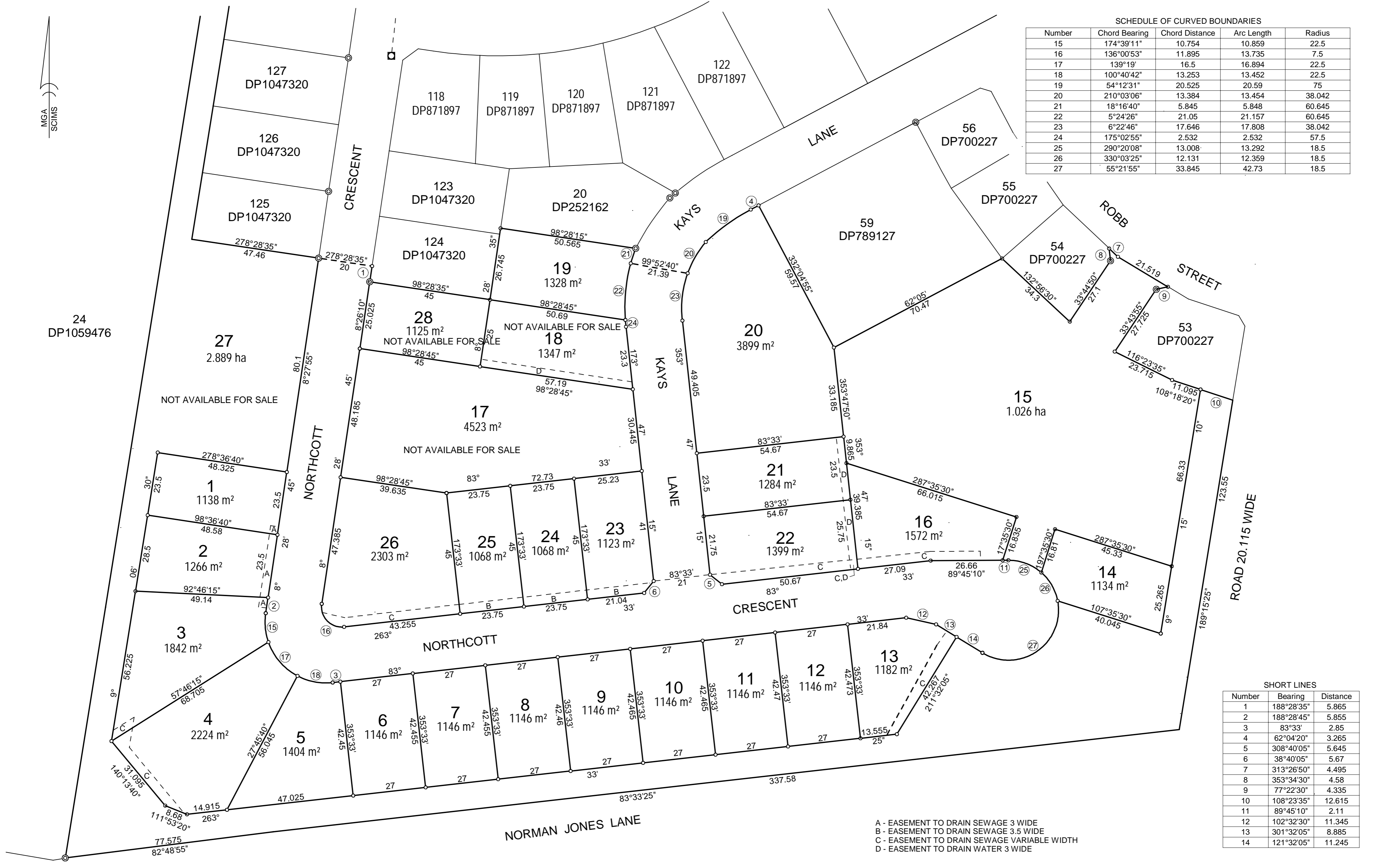


SCHEDULE OF CURVED BOUNDARIES				
Number	Chord Bearing	Chord Distance	Arc Length	Radius
15	174°39'11"	10.754	10.859	22.5
16	136°00'53"	11.895	13.735	7.5
17	139°19'	16.5	16.894	22.5
18	100°40'42"	13.253	13.452	22.5
19	54°12'31"	20.525	20.59	75
20	210°03'06"	13.384	13.454	38.042
21	18°16'40"	5.845	5.848	60.645
22	5°24'26"	21.05	21.157	60.645
23	6°22'46"	17.646	17.808	38.042
24	175°02'55"	2.532	2.532	57.5
25	290°20'08"	13.008	13.292	18.5
26	330°03'25"	12.131	12.359	18.5
27	55°21'55"	33.845	42.73	18.5



SHORT LINES		
Number	Bearing	Distance
1	188°28'35"	5.865
2	188°28'45"	5.855
3	83°33'	2.85
4	62°04'20"	3.265
5	308°40'05"	5.645
6	38°40'05"	5.67
7	313°26'50"	4.495
8	353°34'30"	4.58
9	77°22'30"	4.335
10	108°23'35"	12.615
11	89°45'10"	2.11
12	102°32'30"	11.345
13	301°32'05"	8.885
14	121°32'05"	11.245

- A - EASEMENT TO DRAIN SEWAGE 3 WIDE
- B - EASEMENT TO DRAIN SEWAGE 3.5 WIDE
- C - EASEMENT TO DRAIN SEWAGE VARIABLE WIDTH
- D - EASEMENT TO DRAIN WATER 3 WIDE

**NOTE:**  
 This is a draft disclosure plan prepared from desktop data provided by Geolink Environmental Management Services. All dimensions, areas, easement width are subject to completion of civil work, final work as excuted and cadatral surveys and issue of subdivision certificate by council.

**SURVEYOR**  
 Name: ANTHONY JOHN DENNY  
 Date:  
 Reference: 230129

**PLAN OF SUBDIVISION OF LOT 21 IN DP1252162**

LGA: BALLINA  
 Locality: ALSTONVILLE  
 Reduction Ratio 1:900  
 Lengths are in metres

Registered

**DRAFT PLAN**