

enquiries refer
Clint Stevenson
in reply please quote

Temporary water outage - Lennox Village Vision



4 August 2022

To the resident/business operator
LENNOX HEAD NSW 2478

Dear Sir/Madam

Re: Temporary water outage – Lennox Village Vision

Ballina Shire Council will be installing a new water main on Rayner Lane as part of the Lennox Village Vision project.

To complete these works, water supply will be temporarily interrupted on **Tuesday 9 August at the following locations:**

- **Rayner Lane – 9am to midday**
- **Ballina Street (western side) – 9pm to midnight**

See over page for outage areas.

Once installed, this new water main will improve the reliability of your local water supply.

Tips for preparing for the temporary water outage:

- You may wish to store water in preparation for the interruption.
- When your water returns, it may be discoloured. This is due to sediment. Please run the tap until your water runs clear.
- Milky water is caused by small air bubbles. Do not be alarmed. This is not harmful, and will settle after a short period.
- Please leave your taps off during the interruption as water may return at any time.

Council apologises for any inconvenience caused and thanks you for your patience while these essential works are completed.

If you have any enquiries in regard to this matter please contact Supervisor Construction – Water and Wastewater, Clint Stevenson, on 1300 864 444.

Yours faithfully

Brett Dyki
**Project Manager – Project Management Office
Civil Services Division**

Map of impacted properties (highlighted in red) for water outage – Rayner Lane



Ballina Shire Council
 40 Cherry Street
 BALLINA NSW 2478
 PO Box 450
 BALLINA NSW 2478
 1300 864 444
 council@ballina.nsw.gov.au
 www.ballina.nsw.gov.au

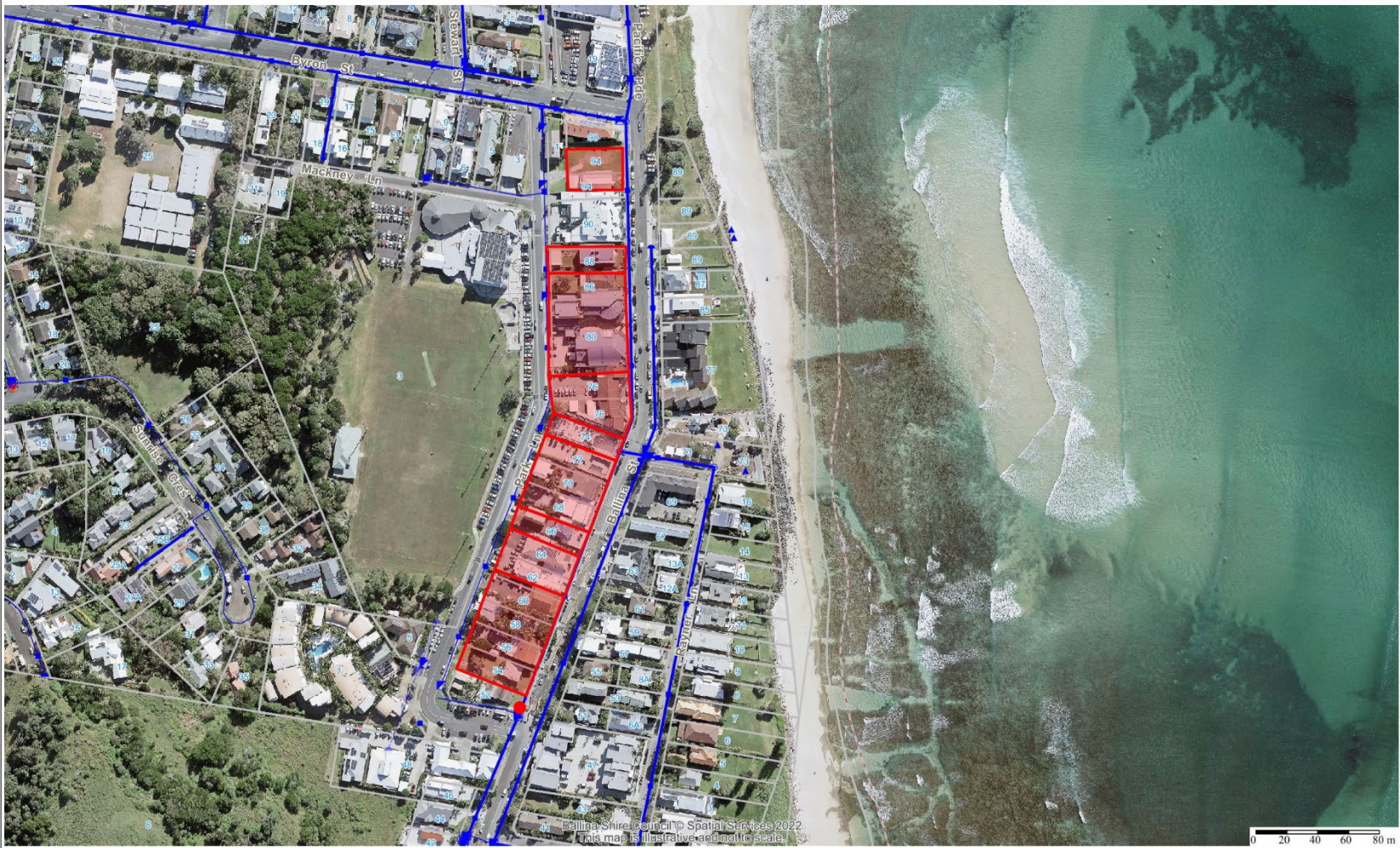


© Ballina Shire Council © 1989-2022. All rights reserved. This map is illustrative and not to scale. The map is provided for informational purposes only. The map is not intended to be used for any other purpose. The map is not intended to be used for any other purpose. The map is not intended to be used for any other purpose.

ballina shire council
 geographical information system
 Projection: GDA94 / MGA zone 56
 Date: 3/08/2022

40 cherry street, po box 450, ballina nsw 2478
 t 1300 864 444 e council@ballina.nsw.gov.au w ballina.nsw.gov.au abn 539 29 887 369

Map of impacted properties (highlighted in red) for water outage – Ballina Street



Ballina Shire Council
 40 Cherry Street
 BALLINA NSW 2478
 PO Box 450
 BALLINA NSW 2478
 1300 864 444
council@ballina.nsw.gov.au
www.ballina.nsw.gov.au



© Ballina Shire Council © NSW Spatial Services 2022. All other content is either the property of Ballina Shire Council or the Local Government of NSW. Federal Government departments and other government organisations. Where applicable, make no representation or warranty about its accuracy, reliability, completeness or suitability for any particular purpose and disclaims all responsibility and liability (including without limitation liability in negligence) for all expenses, losses, damages, and costs which you might incur as a result of the product being incomplete, inaccurate or unreliable.

ballina shire council
 geographical information system
 Projection: GDA94 / MGA zone 56
 Date: 3/08/2022

40 cherry street, po box 450, ballina nsw 2478
t 1300 864 444 e council@ballina.nsw.gov.au w ballina.nsw.gov.au abn 539 29 887 369