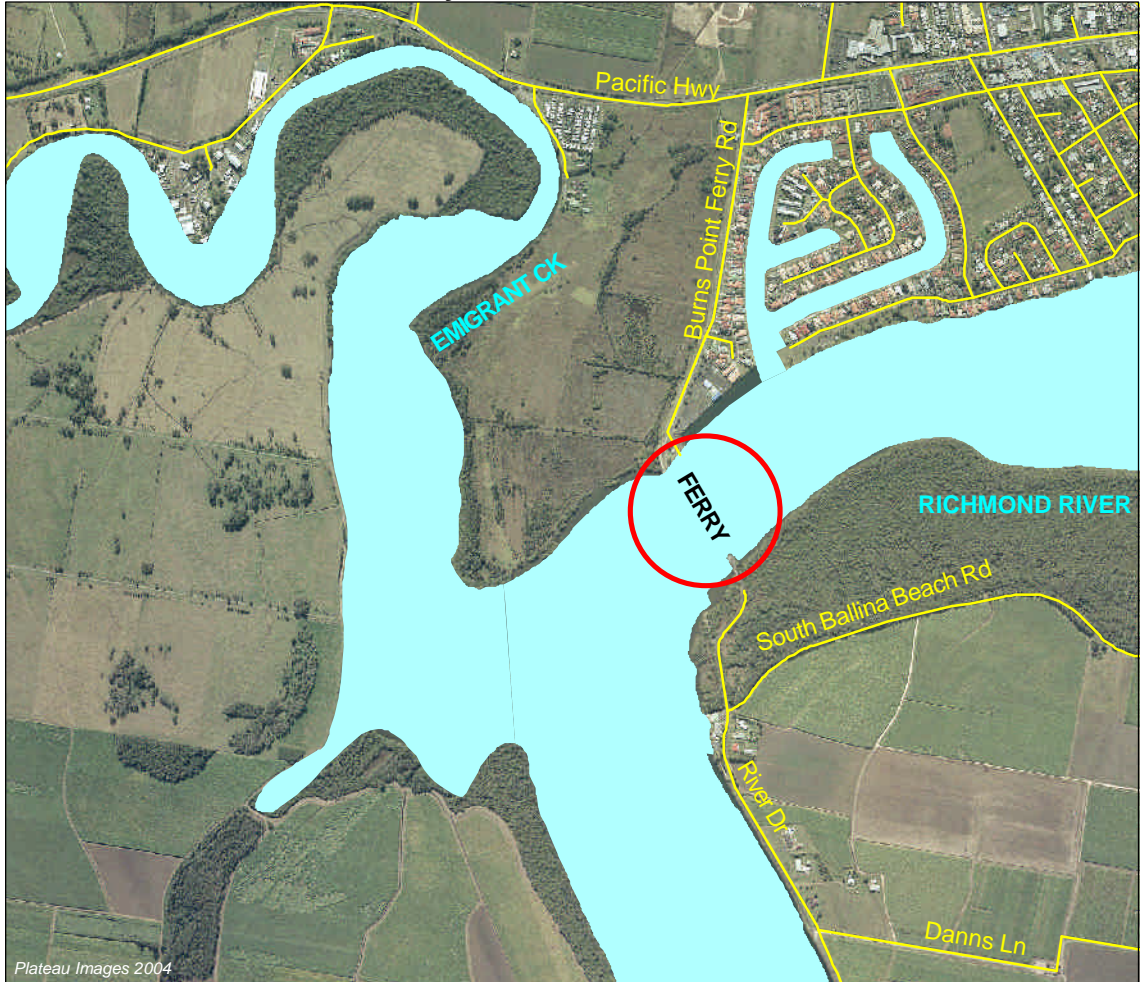


FLOOD AFFECTED ROADS WITHIN BALLINA SHIRE

30.

ROAD: (Burns Point Ferry - Richmond River)

LOCATION: Burns Point Ferry Road, West Ballina / River Drive, Keith Hall



Plateau Images 2004

Regular Ferry Operating Times: 5:30am til 12:30am daily
Closed for maintenance on every 2nd Tuesday between 9am & 12noon.